

DATE: 28 January 2019
DESIGNER: Michael Evans
PROJECT No: ASD-SE-SL-2019-004 - LR - R2
PROJECT NAME: Village Centre North - Car Park



Outdoor Lighting Report

PREPARED BY: ASD Lighting PLC,
Mangham Road,
Barbot Hall Industrial Estate,
Rotherham,
S61 4RJ.

Layout Report

General Data

Dimensions in Metres Angles in Degrees

Calculation Grids

ID	Grid Name	X	Y	X' Length	Y' Length	X' Spacing	Y' Spacing
1	Grid 1	451146.74	225806.01	100.23	65.30	1.50	1.48
2	Grid 2	451250.52	225812.34	178.42	27.86	1.50	1.47
3	Grid 3	451368.47	225780.00	21.00	21.00	1.50	1.50
4	Grid 4	451269.93	225791.96	21.00	21.00	1.50	1.50

Luminaires

Luminaire A Data

Supplier	
Type	HWD-#4LED2050-M1 Osram Rev 1
Lamp(s)	LED
LampFlux(klm)/Colour	3.52 4000/72
File Name	HWD-#4LED2050-M1 (33w).ldt
Maintenance Factor	0.83
Imax70,80,90(cd/klm)	677.3, 135.1, 0.4
No. in Project	17

Luminaire B Data

Supplier	
Type	HWD-#4LED3250-M1 Osram Rev 1
Lamp(s)	LED
LampFlux(klm)/Colour	5.69 4000/72
File Name	HWD-#4LED3250-M1 (50w).ldt
Maintenance Factor	0.83
Imax70,80,90(cd/klm)	657.0, 197.9, 0.5
No. in Project	11

Luminaire C Data

Supplier	
Type	HWD-#4LED4450-M1 Osram Rev 1
Lamp(s)	LED
LampFlux(klm)/Colour	7.60 4000/72
File Name	HWD-#4LED4450-M1 (67w).ldt
Maintenance Factor	0.83
Imax70,80,90(cd/klm)	672.8, 139.8, 0.4
No. in Project	4

Luminaire D Data

Supplier	
Type	Lighthouse bollard root LED Opal diffuser 4000K 500
Lamp(s)	LED
LampFlux(klm)/Colour	1.26 4000k/80
File Name	LHR-B1PL4LED50.ldt
Maintenance Factor	0.83
Imax70,80,90(cd/klm)	117.9, 111.8, 102.7
No. in Project	5

Layout

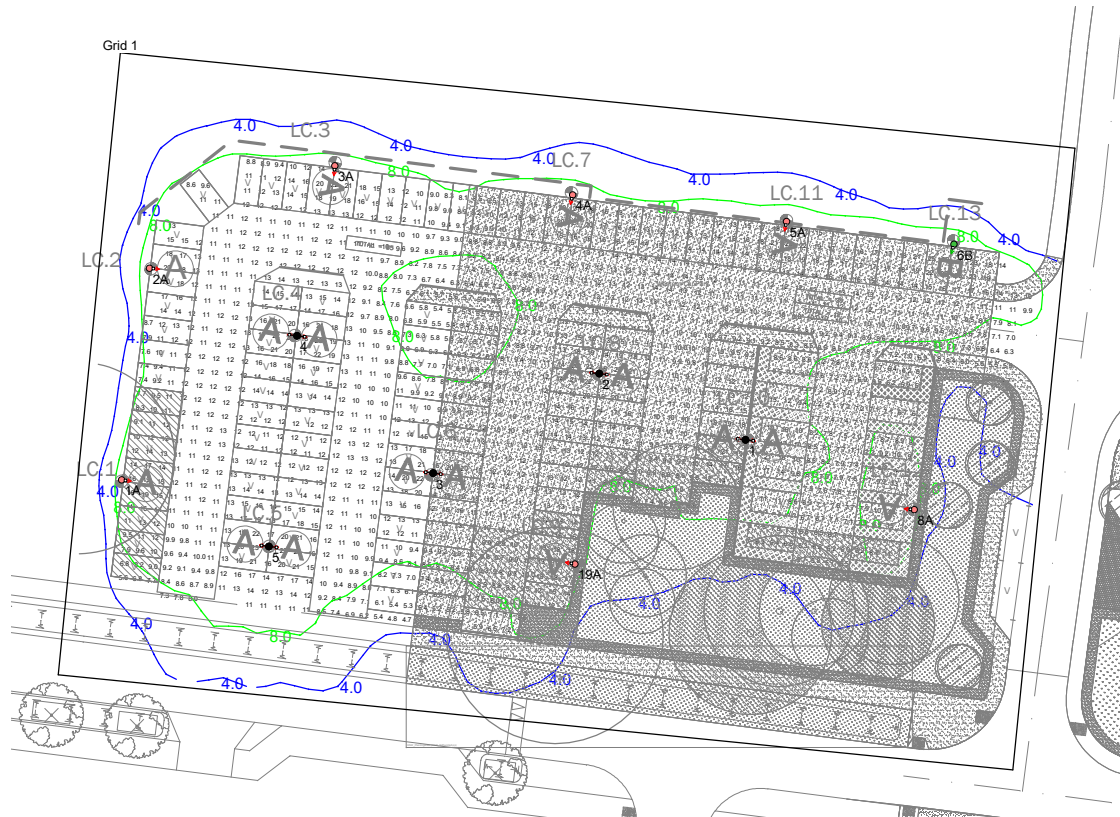
ID	Type	X	Y	Height	Angle	Tilt	Cant	Out-reach	Target X	Target Y	Target Z
1	A	451153.35	225826.36	8.00	354.00	0.00	0.00	0.40			
2	A	451156.27	225848.50	8.00	354.00	0.00	0.00	0.40			
3	A	451175.64	225859.19	8.00	265.00	0.00	0.00	0.40			
4	A	451200.47	225856.14	8.00	257.00	0.00	0.00	0.40			
5	A	451222.84	225853.38	8.00	257.00	0.00	0.00	0.40			
6	B	451240.32	225851.00	8.00	255.00	0.00	0.00	0.40			
8	A	451236.17	225823.25	8.00	174.00	0.00	0.00	0.40			

Layout Continued

ID /Mast	Type	X	Y	Height	Angle	Tilt	Cant	Out- reach	Target X	Target Y	Target Z
8/1	A	451218.55	225830.54	8.00	353.00	0.00	0.00	0.80			
9/1	A	451218.55	225830.54	8.00	173.00	0.00	0.00	0.80			
10/2	A	451203.27	225837.46	8.00	353.00	0.00	0.00	0.80			
11/2	A	451203.27	225837.46	8.00	173.00	0.00	0.00	0.80			
12/3	A	451185.92	225827.07	8.00	353.00	0.00	0.00	0.80			
13/3	A	451185.92	225827.07	8.00	173.00	0.00	0.00	0.80			
14/4	A	451171.69	225841.42	8.00	353.00	0.00	0.00	0.80			
15/4	A	451171.69	225841.42	8.00	173.00	0.00	0.00	0.80			
16/5	A	451168.76	225819.42	8.00	353.00	0.00	0.00	0.80			
17/5	A	451168.76	225819.42	8.00	173.00	0.00	0.00	0.80			
19	A	451200.73	225817.58	8.00	170.00	0.00	0.00	0.40			
20	C	451268.97	225834.83	8.00	264.00	0.00	0.00	0.40			
21	C	451269.22	225818.68	8.00	83.00	0.00	0.00	0.40			
22	C	451292.48	225831.48	8.00	264.00	0.00	0.00	0.40			
23	C	451306.12	225829.90	8.00	264.00	0.00	0.00	0.40			
24	B	451326.53	225827.12	8.00	264.00	0.00	0.00	0.40			
25	B	451332.49	225810.12	8.00	82.00	0.00	0.00	0.40			
26	B	451345.11	225824.72	8.00	264.00	0.00	0.00	0.40			
27	B	451349.45	225807.99	8.00	78.00	0.00	0.00	0.40			
28	B	451370.45	225821.12	8.00	264.00	0.00	0.00	0.40			
29	B	451368.74	225805.19	8.00	80.00	0.00	0.00	0.40			
30	B	451387.89	225818.91	8.00	264.00	0.00	0.00	0.40			
31	B	451393.83	225802.03	8.00	87.00	0.00	0.00	0.40			
32	B	451412.09	225815.43	8.00	264.00	0.00	0.00	0.40			
33	B	451411.58	225799.44	8.00	82.00	0.00	0.00	0.40			
33	D	451373.97	225790.64	1.00	351.00	0.00	0.00	0.00			
34	D	451379.55	225796.44	1.00	173.00	0.00	0.00	0.00			
35	D	451377.94	225783.68	1.00	170.00	0.00	0.00	0.00			
36	D	451278.17	225803.29	1.00	36.00	0.00	0.00	0.00			
37	D	451279.82	225796.18	1.00	84.00	0.00	0.00	0.00			

Horizontal Illuminance (lux)

Grid 1

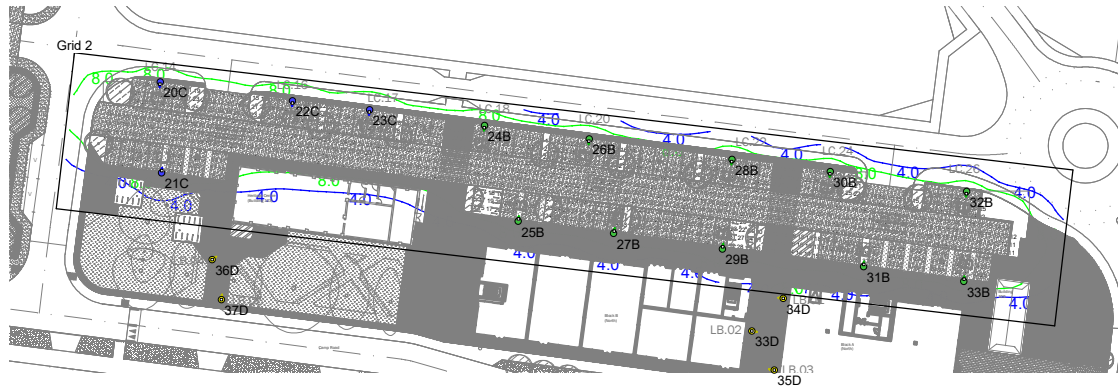


Results

Eav	11.65
Emin	4.68
E _{max}	28.70
Emin/E _{max}	0.16
Emin/Eav	0.40

Horizontal Illuminance (lux)

Grid 2

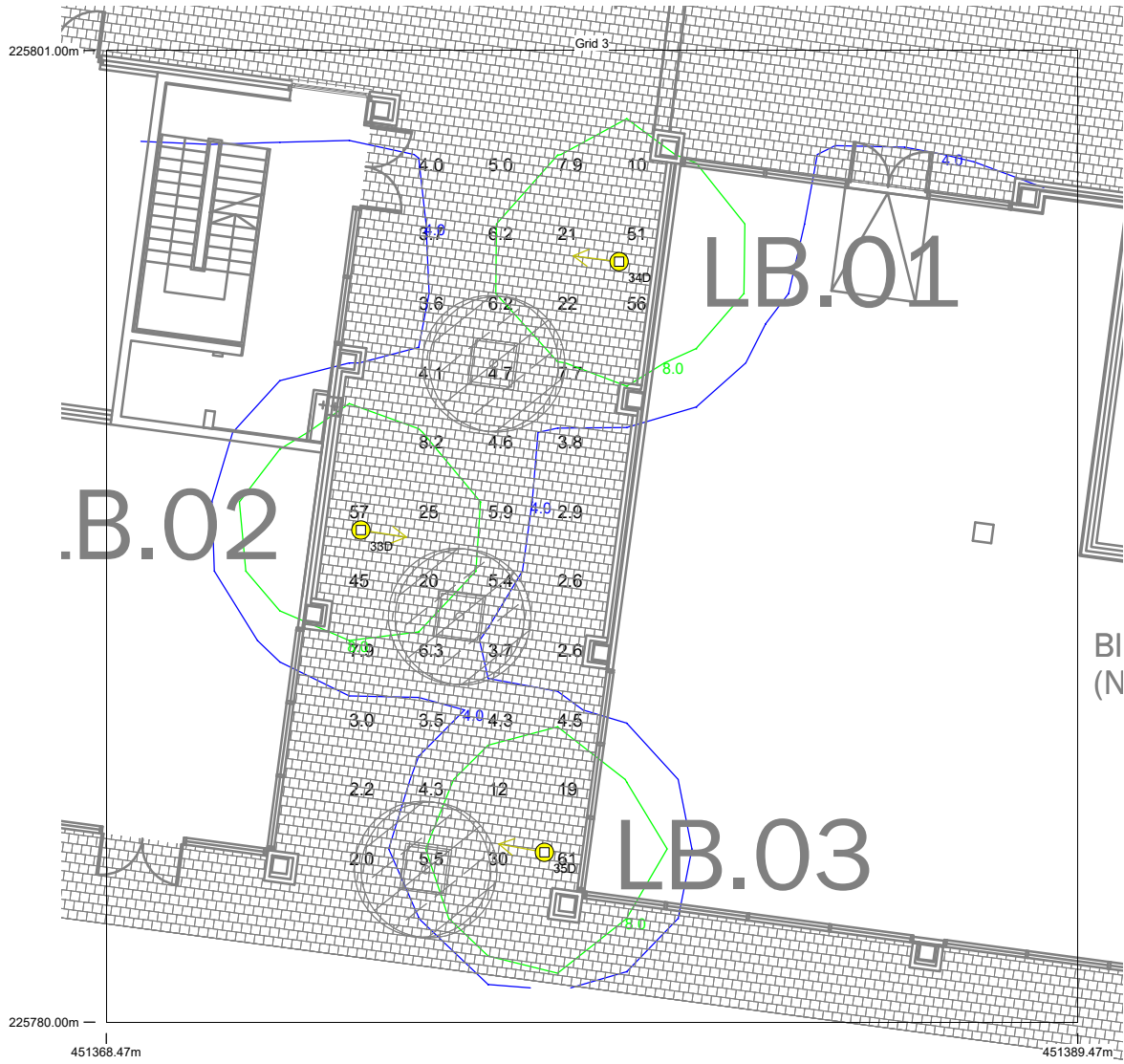


Results

Eav	21.20
Emin	10.17
Emax	43.70
Emin/Emax	0.23
Emin/Eav	0.48

Horizontal Illuminance (lux)

Grid 3



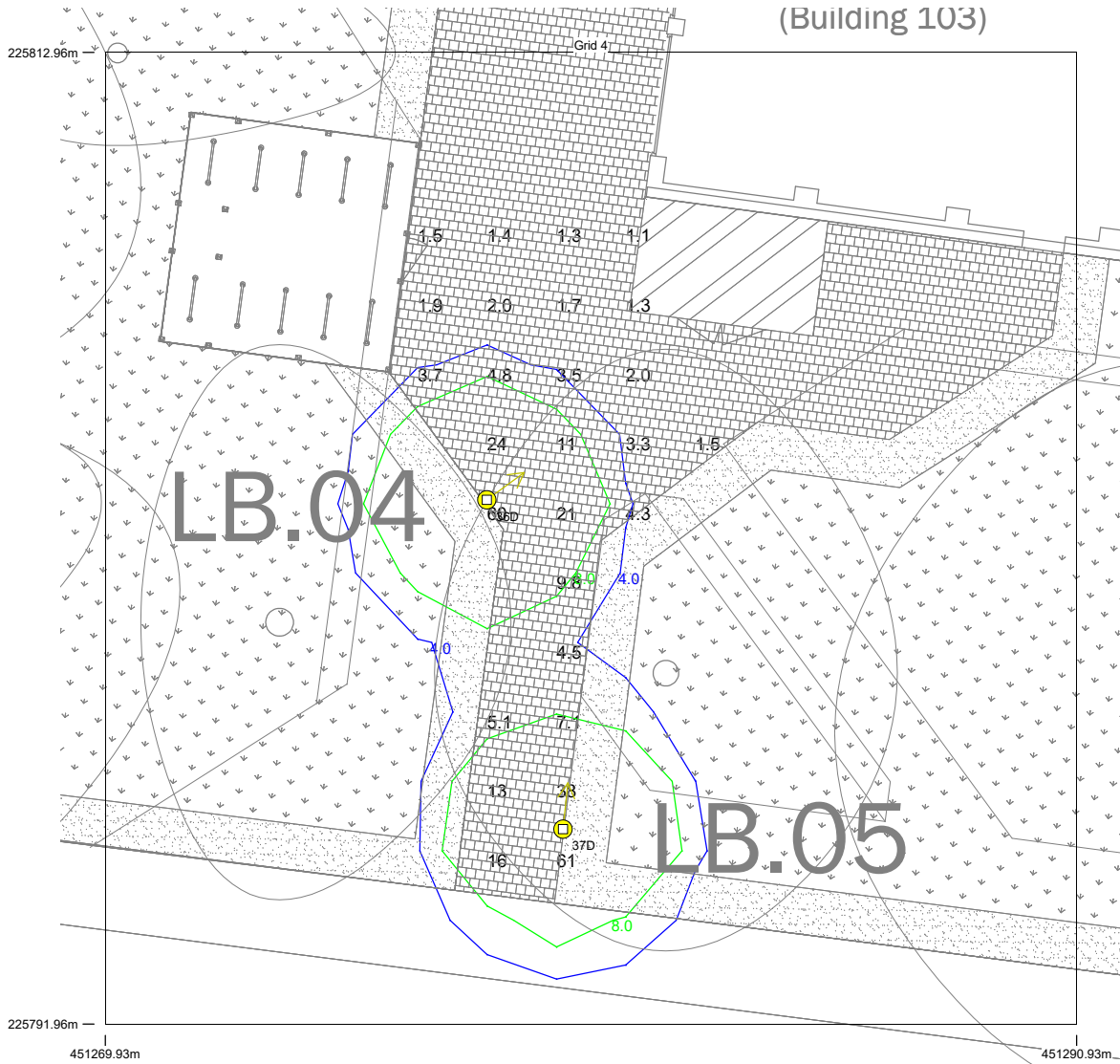
Results

Eav	13.48
Emin	2.02
Emax	61.28
Emin/Emax	0.03
Emin/Eav	0.15

Horizontal Illuminance (lux)

Grid 4

(Building 103)



Results

Eav	11.30
Emin	1.12
Emax	61.20
Emin/Emax	0.02
Emin/Eav	0.10