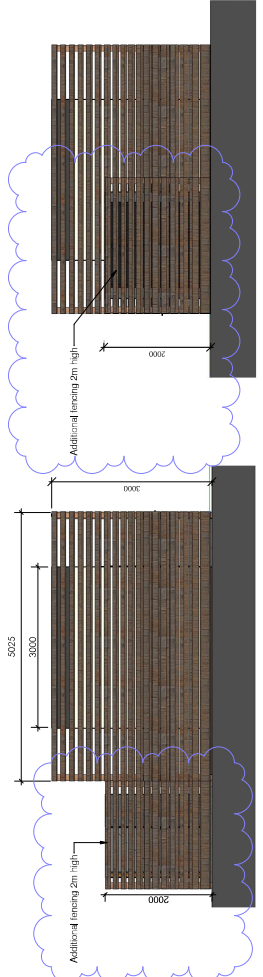
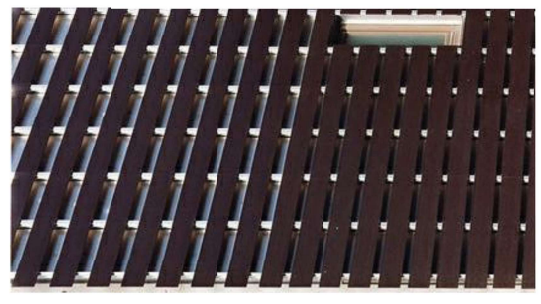
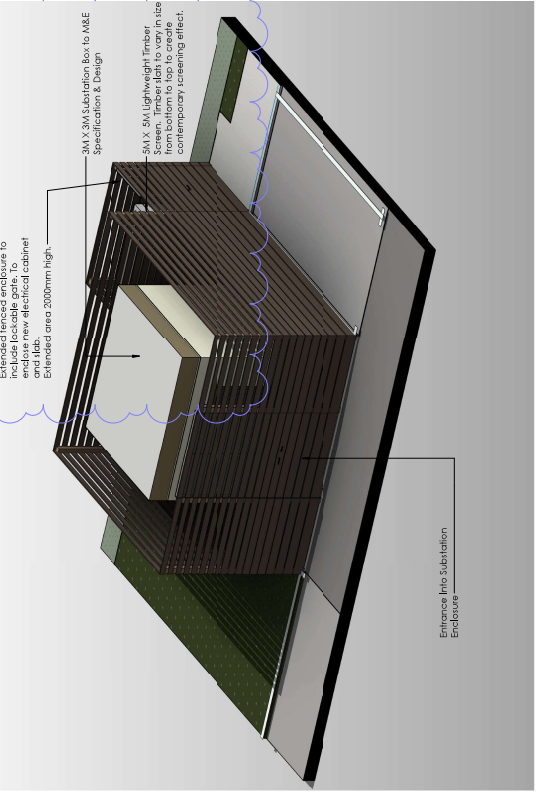


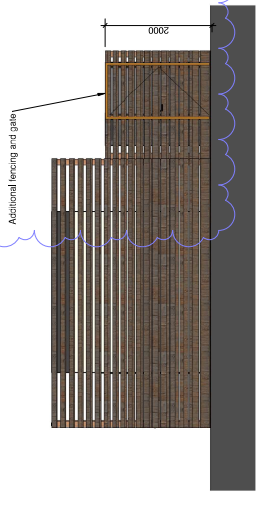
01 SUBSTATION PLAN 1:50



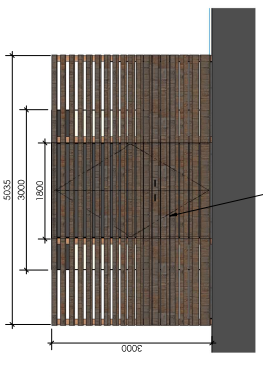
06 SUBSTATION - 3D VIEW



PRECEDENT IMAGE 01



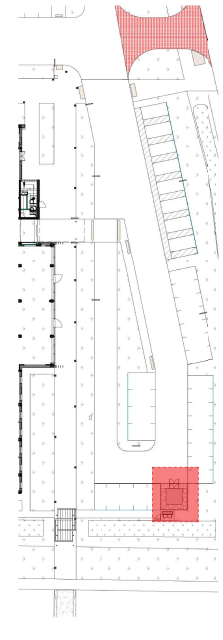
SUBSTATION ELEVATION 3



SUBSTATION ELEVATION 4

SUBSTATION ELEVATION 2

SUBSTATION ELEVATION 1



REFER TO NBS CLAUSE Q50/210B

This drawing has been prepared solely for the use of ATLAS (BICESTER) Ltd and there are no other obligations on NORR Consultants Limited to any party with whom NORR Consultants Limited has not entered into a contract. This drawing must not be used, reproduced or revised without written permission. This drawing shall not be used for construction purposes until the 'CONSTRUCTION' status appears under the 'Sheet Status'. Constructors must only work to figured dimensions which are to be checked on site. Do not scale from hard copy drawings.

DATE	REVISION	REV/DW/CHK
14.02.19	Final Issue	PRT AC PA
07.02.19	Final Review	P97 AC PA
11.02.19	Design Review	AC PA
14.02.19	Substation enclosure added to full required additional panel cabinet and slab	001 PA PA

Keyplan

Detail Symbol
KEY:

Detail No.
Sheet No.

North Arrow

NORR
NORR Consultants Limited.
An Equinor International Company

100 York Road, Colchester, Essex, UK
London W1W 5PA, UK
Houston, USA

Project: ATLAS (BICESTER) Ltd		Drawing Title: EXTERNAL SUBSTATION FENCING ENCLOSURE DETAILS	
Project: BICESTER GATEWAY HOTEL		Sheet Status: SZ - FOR INFORMATION	
Drawn: CF	Date: 01/03/2019	Project No.: JAN17 700034	Drawn No.: BQH-NOR-DE-A-6804
Checked: AC	Date: 01/03/2019	Scale: As indicated @ A1	Rev: C01