

Apical Arbor
 No. 2 Astwell Castle Farm
 Helmdon, Nr Brackley
 Northamptonshire NN13 5QU
 T - 01295 768 541
 M - 07757786101
 E - Apicalarbor@gmail.com

Tree Removals Summary

Category A	Category B	Category C	Category U
0	0	39	5

Category C group of trees G3 will be partially removed.
 Category C groups of trees G7 & G8 will be removed entirely.

Tree Removal Schedule

Tree No.	Category	Species	Note
T25	C12	Silver Birch	
T26	C12	Manchurian Cherry	
[27]	U	Wild Cherry	To be removed regardless of development
T28	C12	Rowan	
T29	C12	Purple Plum	
T30	C12	Juniper	
[31]	U	Indian Bean Tree	To be removed regardless of development
T33	C12	Wingnut	
T34	C12	Manchurian Cherry	
T40	C12	Wild Cherry	
[44]	U	Whitebeam	To be removed regardless of development
[45]	U	Black Walnut	To be removed regardless of development
T46	C12	Apple Sp.	
T54	C12	Norway Spruce	
T55	C12	Liquid Amber	
T57	C12	Scots Pine	
T58	C12	Dawn Redwood	
T59	C12	Norway Spruce	
T60	C12	Norway Spruce	
T68	C12	Lawson Cypress	
T69	C12	Dawn Redwood	
T70	C12	Silver Birch	
T71	C12	Dawn Redwood	
T72	C12	Beech	
T74	C12	Beech	
T77	C12	Ash	
T78	C12	Norway Spruce	
T79	C12	Norway Spruce	
T80	C12	Norway Spruce	
T81	C12	Norway Spruce	
T82	C12	Norway Spruce	
T83	C12	Norway Spruce	
T84	C12	Norway Spruce	
T85	C12	Norway Spruce	
T86	C12	Norway Spruce	
T87	C12	Norway Spruce	
T88	C12	Norway Spruce	
T89	C12	Norway Spruce	
T90	C12	Norway Spruce	
T91	C12	Norway Spruce	
T92	C12	Norway Spruce	
T93	C12	Norway Spruce	To be removed regardless of development
[95]	C12	Indian Bean Tree	
G3	U	Dog Rose, Elder, Etc	Partial Removal
G7	C12	Dogwood, ornata	
G8	C12	Goat Willow, Ash	

KEY:

Tree Nos.:	● T1	Tree Canopies:	○	Cat U Trees:	○
Category 'A' RPA:	○	Category 'B' RPA:	○	Cat U Tree No.:	[T44]
Category 'C' RPA:	○	Trees to be Removed:	T28		

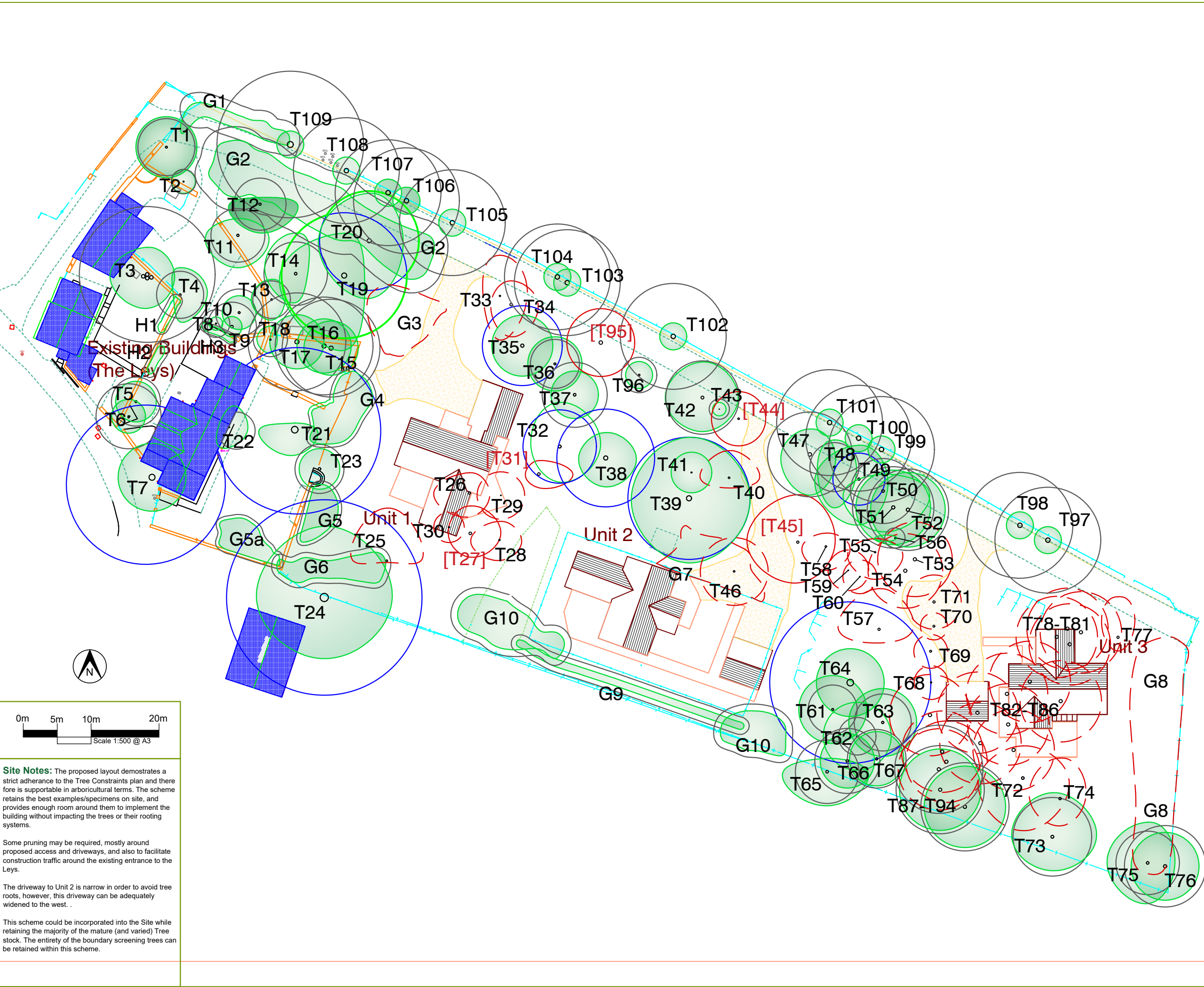
Project/Client:
The Leys, Adderbury

Based On: Dwg No. 5392.sk10 Alternative Site Layout

Title: Arboricultural Impacts Assessment
 Drawing No: AA AIA 02

Date: 29.10.18 | Drawn: PPDB | Checked:-

Note: The original of this drawing was produced in colour - a monochrome copy should not be relied upon. Do not scale from this drawing.



Site Notes: The proposed layout demonstrates a strict adherence to the Tree Constraints plan and there fore is supportable in arboricultural terms. The scheme retains the best examples/specimens on site, and provides enough room around them to implement the building without impacting the trees or their rooting systems.

Some pruning may be required, mostly around proposed access and driveways, and also to facilitate construction traffic around the existing entrance to the Leys.

The driveway to Unit 2 is narrow in order to avoid tree roots, however, this driveway can be adequately widened to the west.

This scheme could be incorporated into the Site while retaining the majority of the mature (and varied) Tree stock. The entirety of the boundary screening trees can be retained within this scheme.