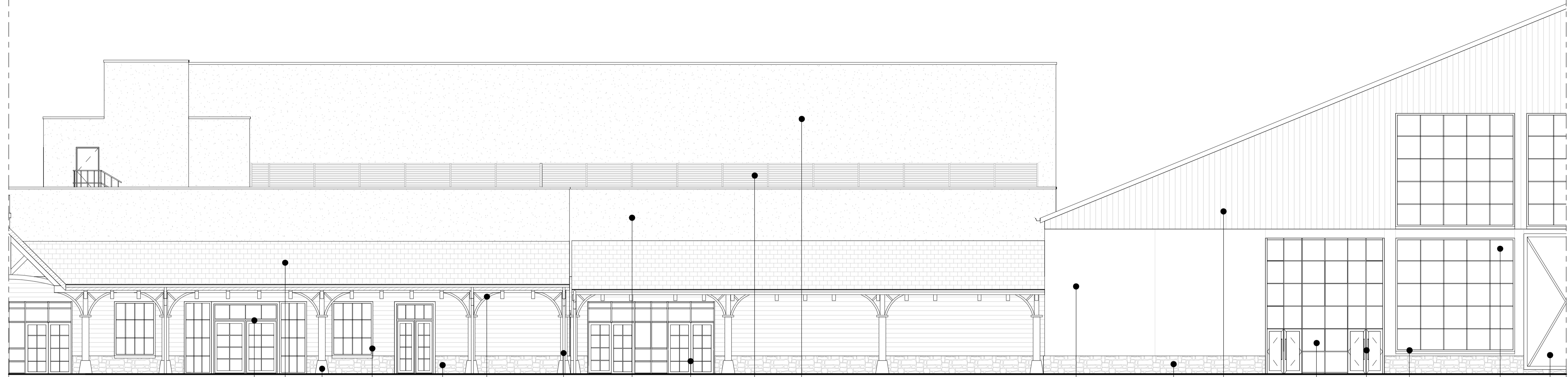
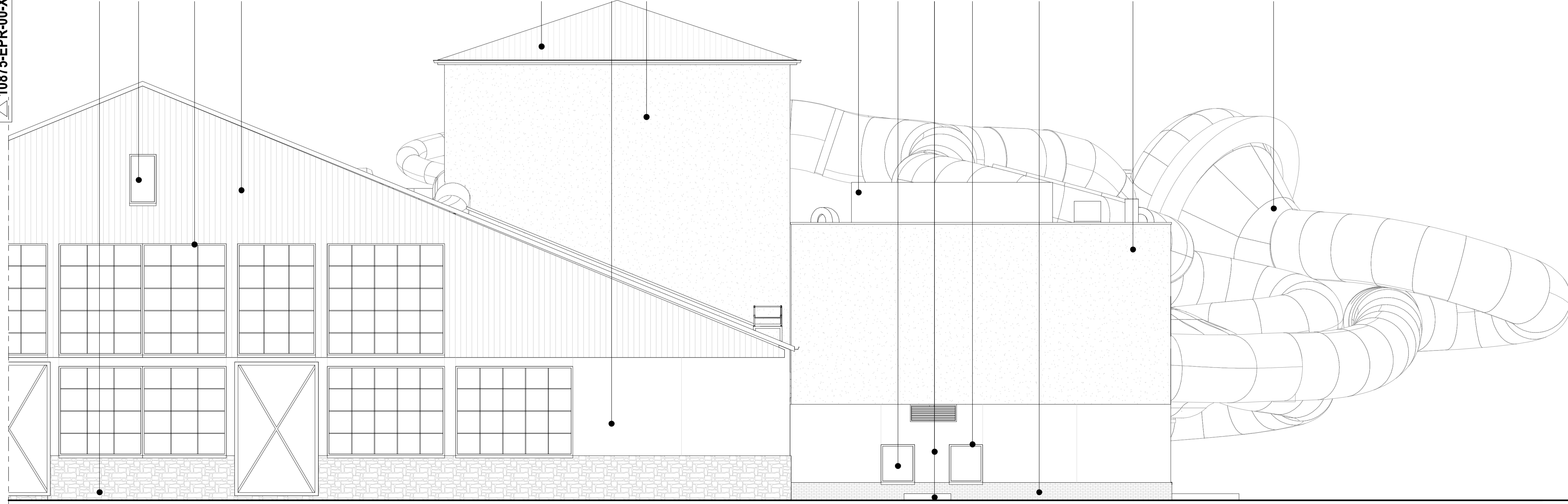


10875-EPR-00-XX-DR-A-TP-4205

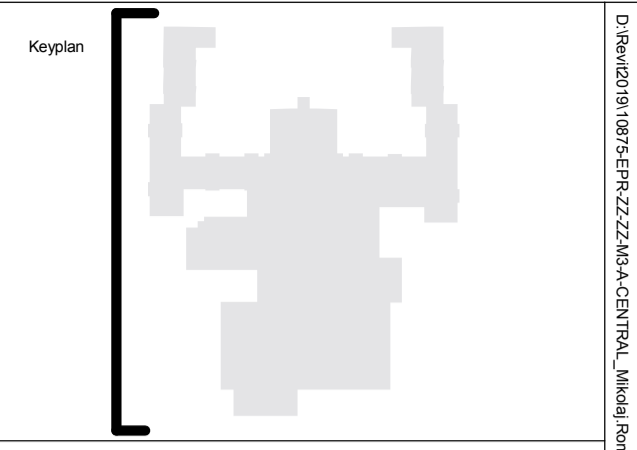
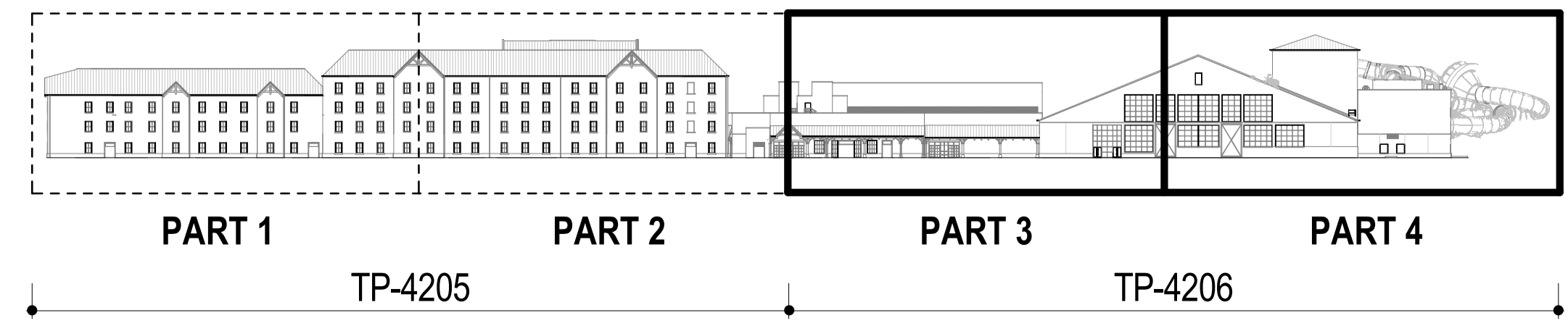


2 NW Elevation - Part 3  
1:100

WA-1 WI-4 WI-3 WA-4 DR-3 RF-2 DT-7 WI-1 WA-1 DT-5 RF-3 DT-5 WA-5 WA-2 DR-3 DT-11 WA-2 EQ-2 WI-4 WA-5 WI-3 WA-6 WA-5 WA-2 WA-1 WA-4 DT-13 WI-4 DR-1 WI-3 WI-4 DR-2



1 NW Elevation - Part 4  
1:100



North

Notes:  
1. Do not scale  
2. Contractor to check all dimensions and report omissions and errors to the Architect  
3. EPR Architects accepts no liability for use of this drawing by parties other than the party for whom it was prepared or for purposes other than those for which it was prepared.  
4. This drawing is issued in dwg/dgn format as an uncontrolled version to enable the recipient to prepare their own documents/drawings/models for which they are solely responsible. This drawing is based on project information current at the time of issue. EPR Architects Limited accepts no liability for any alterations or additions to or discrepancies arising out of any change to such project information that occurs to the information after it is issued by EPR Architects Limited.  
5. This drawing does not contain shared coordinates and is not issued for coordination purposes.

No.	Revision	Date	Initial	Chk'd
3	P03 - Planning Issue	08.11.19	LOG	AJ
2	P02 - Preliminary Planning Issue	26.10.19	LOG	AJ
1	P01 - Preliminary Planning Issue	25.10.19	LOG	CT

Key:  
WA-1- Stone  
WA-2- Light cream render  
WA-3- Timber cladding  
WA-4- Green coloured metal corrugated cladding  
WA-5- Concrete panels  
WA-6- Engineering buff brick

RF-1- Dark red roof tiles  
RF-2- Dark grey roof tiles  
RF-3- Green corrugated metal cladding

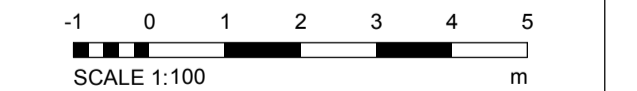
WI-1- Dark slate grey metal window frame  
WI-2- Cream metal window frame  
WI-3- Light grey metal window frame  
WI-4- Glass

DR-1- Light grey metal door frame  
DR-2- Grey metal barn doors - fixed  
DR-3- Dark slate grey door frame  
DR-4- Cream metal door frame

DT-1- Stone facade detailing  
DT-2- Metal coping  
DT-3- Dark grey gutter  
DT-4- Dark grey downpipe  
DT-5- Timber  
DT-6- Timber board for sign  
DT-7- Concrete  
DT-8- Metal decorative element  
DT-9- Light grey metal window cill  
DT-10- Dark slate grey metal window cill  
DT-11- Metal louvres  
DT-12- Timber louvres  
DT-13- Multi-coloured water slides  
DT-14- Roller shutter

EQ-1-Flue  
EQ-2- Air handling unit  
EQ-3- PV panels

Notes:  
1. Stonework, render, timber cladding & roof tile patterns indicative - shown for illustrative purpose.



**EPR Architects**  
30 Millbank, London SW1P 4DU  
+44(0)20 7327800  
www.epr.co.uk

Proposed Great Wolf Lodge  
Chesterton, Bicester, Oxfordshire

Proposed Elevations - North-West

Scale	Status	Revision
As indicated	Planning	3

Project Code: 10875 - EPR - 00 - XX - DR - A - TP - 4206