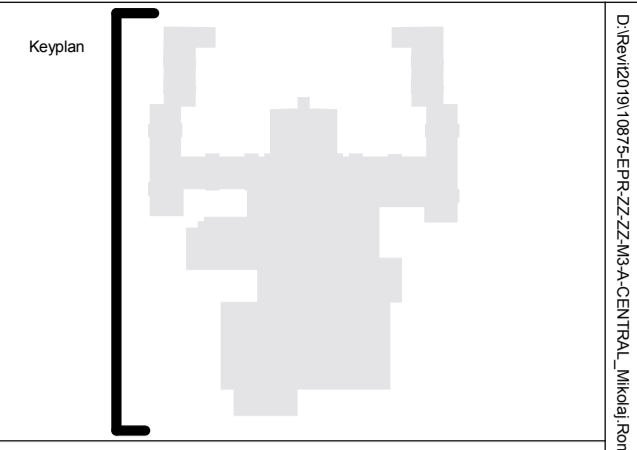
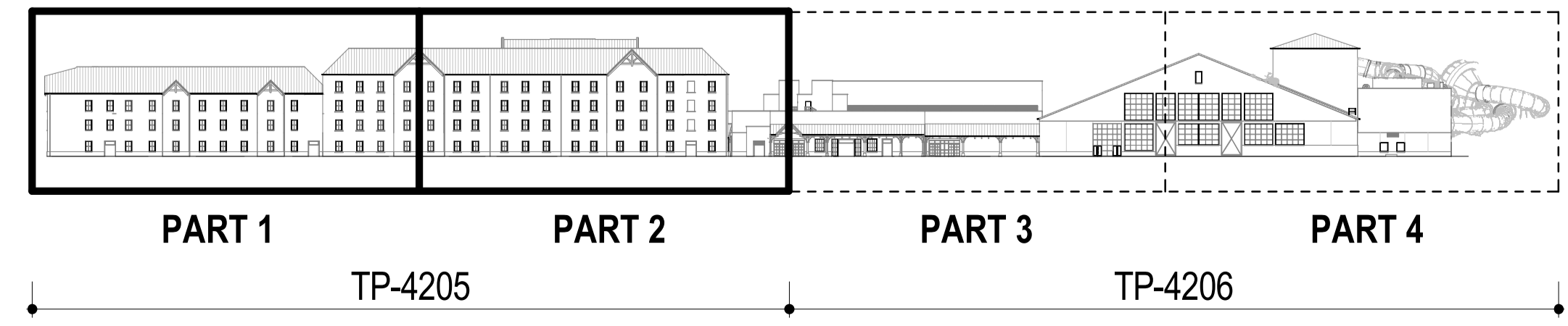




4 NW Elevation - Part 1
1:100



2 NW Elevation - Part 2
1:100



North

Notes:
 1. Do not scale
 2. Contractor to check all dimensions and report omissions and errors to the Architect
 3. EPR Architects accepts no liability for use of this drawing by parties other than the party for whom it was prepared or for purposes other than those for which it was prepared.
 4. This drawing is issued in dwg/print format as an uncontrolled version to enable the recipient to prepare their own documents/drawings/models for which they are solely responsible. This drawing is based on project information current at the time of issue. EPR Architects Limited accepts no liability for any alterations or additions to or discrepancies arising out of any change to such project information that occurs to the information after it is issued by EPR Architects Limited.
 5. This drawing does not contain shared coordinates and is not issued for coordination purposes.

No.	Revision	Date	Initial	Chk'd
3	P03 - Planning Issue	08.11.19	LOG	AJ
2	P02 - Preliminary Planning Issue	30.10.19	LOG	AJ
1	P01 - Preliminary Planning Issue	25.10.19	LOG	CT

Key:
 WA-1- Stone
 WA-2- Light cream render
 WA-3- Timber cladding
 WA-4- Green coloured metal corrugated cladding
 WA-5- Concrete panels
 WA-6- Engineering buff brick

RF-1- Dark red roof tiles
 RF-2- Dark grey roof tiles
 RF-3- Green corrugated metal cladding

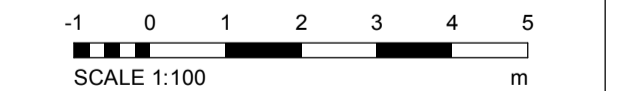
WI-1- Dark slate grey metal window frame
 WI-2- Cream metal window frame
 WI-3- Light grey metal window frame
 WI-4- Glass

DR-1- Light grey metal door frame
 DR-2- Grey metal barn doors - fixed
 DR-3- Dark slate grey door frame
 DR-4- Cream metal door frame

DT-1- Stone facade detailing
 DT-2- Metal coping
 DT-3- Dark grey gutter
 DT-4- Dark grey downpipe
 DT-5- Timber
 DT-6- Timber board for sign
 DT-7- Concrete
 DT-8- Metal decorative element
 DT-9- Light grey metal window cill
 DT-10- Dark slate grey metal window cill
 DT-11- Metal louvres
 DT-12- Timber louvres
 DT-13- Multi-coloured water slides
 DT-14- Roller shutter

EQ-1-Flue
 EQ-2- Air handling unit
 EQ-3- PV panels

Notes:
 1. Stonework, render, timber cladding & roof tile patterns indicative - shown for illustrative purpose.



EPR Architects
 30 Millbank, London SW1P 4DU
 +44(0)20 7327800
 www.epr.co.uk

Proposed Great Wolf Lodge
 Chesterton, Bicester, Oxfordshire

Proposed Elevations - North-West

Scale	Status	Revision
As indicated	Planning	3

Project Code: 10875 - EPR - 00 - XX - DR - A - TP - 4205