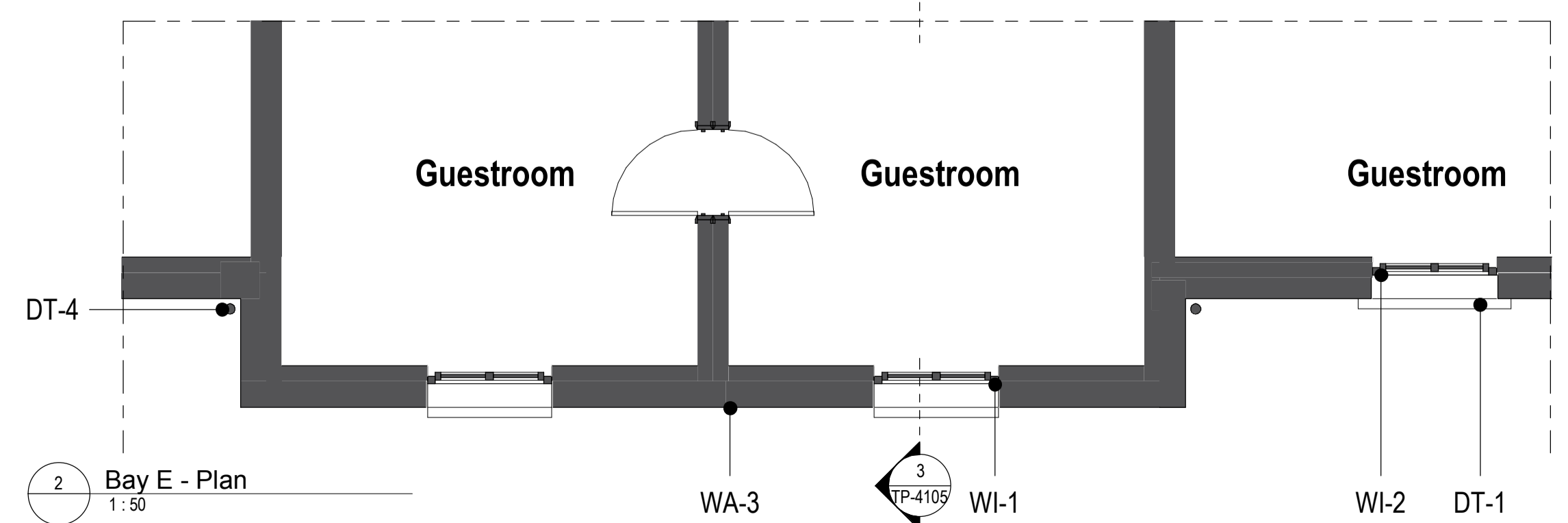




1 Bay E - Elevation NW  
1:50

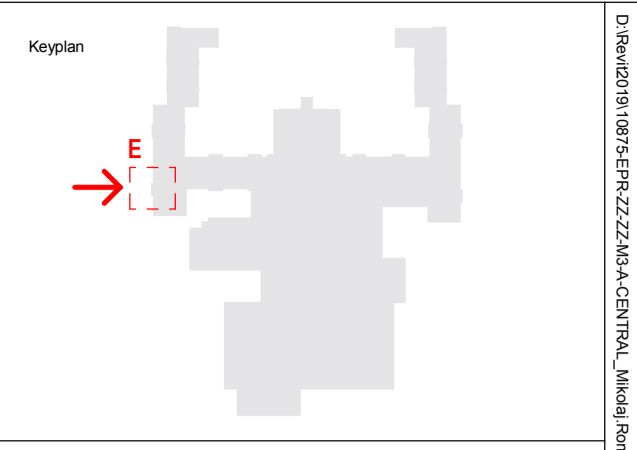
3 Bay E - Section  
1:50



2 Bay E - Plan  
1:50



4 Bay E - Axonometric



North

Notes:  
 1. Do not scale  
 2. Contractor to Check all dimensions and report omissions and errors to the Architect  
 3. EPR Architects accepts no liability for use of this drawing by parties other than the party for whom it was prepared or for purposes other than those for which it was prepared.  
 4. This drawing is issued in dwg/print format as an uncontrolled version to enable the recipient to prepare their own documents/drawings/models for which they are solely responsible. This drawing is based on project information current at the time of issue. EPR Architects Limited accepts no liability for any alterations or additions to or discrepancies arising out of any change to such project information that occurs to the information after it is issued by EPR Architects Limited.  
 5. This drawing does not contain shared coordinates and is not issued for coordination purposes.

No.	Revision	Date	Initial	Chk'd
3	P03 - Planning Issue	08.11.19	LOG	AJ
2	P02 - Preliminary Planning Issue	26.10.19	LOG	AJ
1	P01 - Preliminary Planning Issue	25.10.19	LOG	CT

Key:  
 WA-1- Stone  
 WA-2- Light cream render  
 WA-3- Timber cladding  
 WA-4- Green coloured metal corrugated cladding  
 WA-5- Concrete panels  
 WA-6- Engineering buff brick

RF-1- Dark red roof tiles  
 RF-2- Dark grey roof tiles  
 RF-3- Green corrugated metal cladding

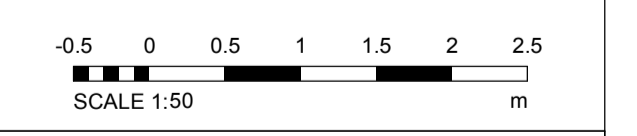
WI-1- Dark slate grey metal window frame  
 WI-2- Cream metal window frame  
 WI-3- Light grey metal window frame  
 WI-4- Glass

DR-1- Light grey metal door frame  
 DR-2- Grey metal barn doors - fixed  
 DR-3- Dark slate grey door frame  
 DR-4- Cream metal door frame

DT-1- Stone facade detailing  
 DT-2- Metal coping  
 DT-3- Dark grey gutter  
 DT-4- Dark grey downpipe  
 DT-5- Timber  
 DT-6- Timber board for sign  
 DT-7- Concrete  
 DT-8- Metal decorative element  
 DT-9- Light grey metal window cill  
 DT-10- Dark slate grey metal window cill  
 DT-11- Metal louvres  
 DT-12- Timber louvres  
 DT-13- Multi-coloured water slides  
 DT-14- Roller shutter

EQ-1-Flue  
 EQ-2- Air handling unit  
 EQ-3- PV panels

Notes:  
 1. Stonework, render, timber cladding & roof tile patterns indicative - shown for illustrative purpose.



EPR Architects  
 30 Millbank, London SW1P 4DU  
 +44(0)20 7327800  
 www.epr.co.uk

Proposed Great Wolf Lodge  
 Chesterton, Bicester, Oxfordshire

Bay E  
 Proposed Typical Bay Study

Scale	Status	Revision
A1	Planning	3

Project Code: 10875 - EPR - 00 - XX - DR - A - TP-4105

D:\Rev\03\10875\EPR\22\DR-A-CHE\10875\_Misc\Bay Elevation.dwg 2019-11-08 11:27:17