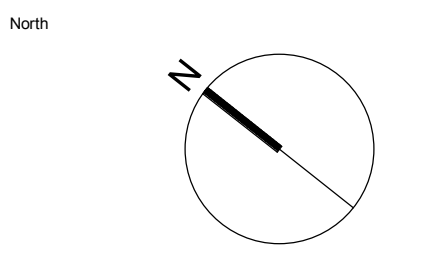
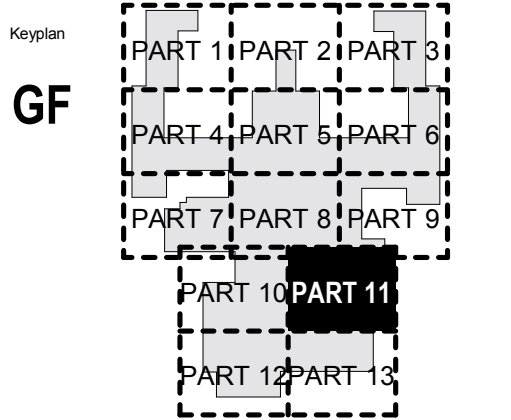
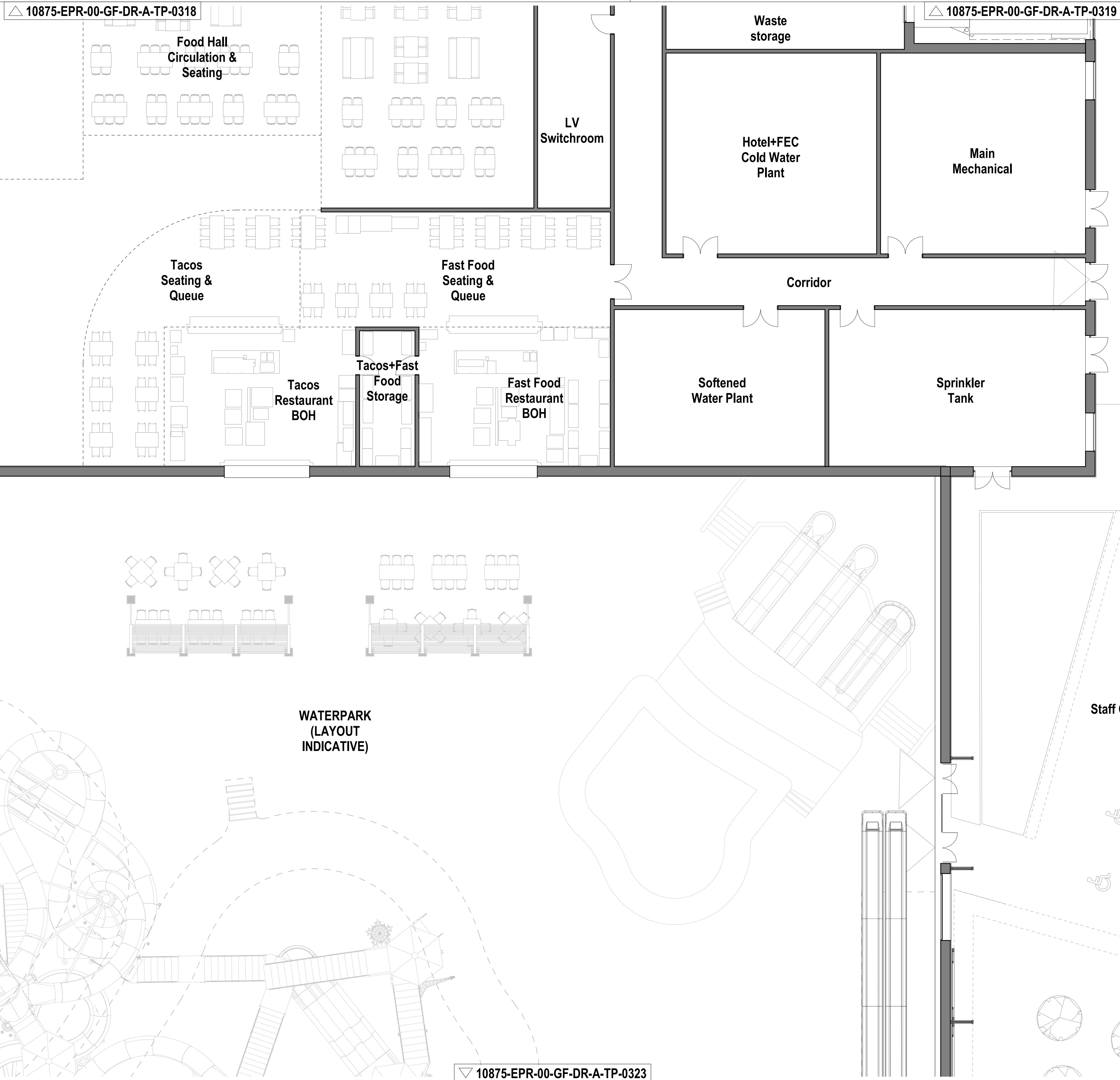


10875-EPR-00-GF-DR-A-TP-0318

10875-EPR-00-GF-DR-A-TP-0319



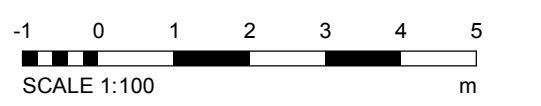
- Notes:
1. Do not scale
  2. Contractor to check all dimensions and report omissions and errors to the Architect
  3. EPR Architects accepts no liability for use of this drawing by parties other than the party for whom it was prepared or for purposes other than those for which it was prepared.
  4. This drawing is issued in dwg/print format as an uncontrolled version to enable the recipient to prepare their own documents/drawings/models for which they are solely responsible. This drawing is based on project information current at the time of issue. EPR Architects Limited accepts no liability for any alterations or additions to or discrepancies arising out of any change to such project information that occurs to the information after it is issued by EPR Architects Limited.
  5. This drawing does not contain shared coordinates and is not issued for coordination purposes.

No.	Revision	Date	Initial	Chk'd
3	P03 - Planning Issue	08.11.19	LOG	AJ
2	P02 - Preliminary Planning Issue	20.10.19	LOG	AJ
1	P01 - Preliminary Planning Issue	25.10.19	LOG	CT

- Notes:
1. This drawing has been prepared for planning application purposes only.
  2. EPR Architects accepts no liability for use of this drawing by parties other than the party for whom it was prepared or for purposes other than those for which it was prepared.
  3. Landscape shown for illustrative purposes only; refer to Landscape Architect's for Landscape proposals for further details.
  4. Do not scale.
  5. This drawing is based on project information current at the time of issue. EPR Architects Limited accepts no liability for any alterations to or discrepancies arising out of any change to such project information that occurs to the information after it is issued by EPR Architects Limited.
  6. This drawing does not contain shared coordinates and is not issued for coordination purposes.
  7. Furniture layouts are indicative and for illustrative purposes only.
  8. Structural elements are indicative and for illustrative purposes only.

**R** - Refuge Area

- List of abbreviations and acronyms used:
- ACC - Accessible
  - AV - Audio-Video
  - BOH - Back of House
  - FEC - Family Entertainment Centre
  - HR - Human Resources
  - IT - Information Technology
  - IDF - Intermediate Distribution Framework
  - LV - Low Voltage
  - MDF - Main Distribution Framework
  - MQE - Magic Quest Encounter theme booth
  - WP - Water Park



**EPR Architects**

30 Millbank, London SW1P 4DU  
+44(0)20 7327800  
www.epr.co.uk

Proposed Great Wolf Lodge  
Chesterton, Bicester, Oxfordshire

Proposed Ground Floor Plan Part 11

Scale	Status	Revision
1:100	Planning	3

Project Code	Originator	Zone	Level	Type	Role	Class	Number
10875 - EPR - 00 - GF - DR - A - TP-0321							

10875-EPR-00-GF-DR-A-TP-0320

10875-EPR-00-GF-DR-A-TP-0323

C:\Repos\10875-EPR\22\26-A-CENTRAL\Layout\GroundFloor\0321.dwg

2019-11-08 11:46:31