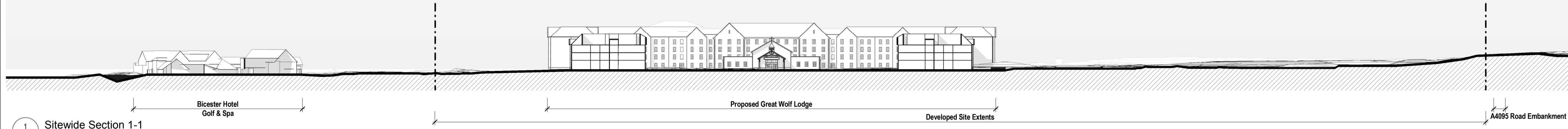


North

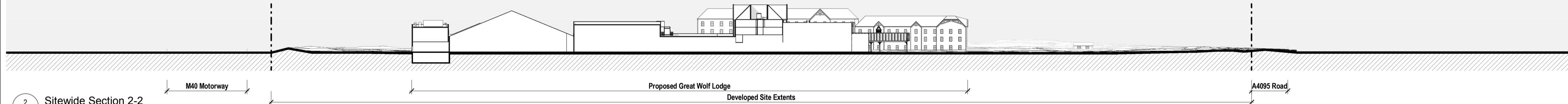
Notes:
 1. Do not scale
 2. Contractor to Check all dimensions and report omissions and errors to the Architect
 3. EPR Architects accepts no liability for use of this drawing by parties other than the party for whom it was prepared or for purposes other than those for which it was prepared.
 4. This drawing is issued in dwg/dgn format as an uncontrolled version to enable the recipient to prepare their own documents/drawings/models for which they are solely responsible. This drawing is based on project information current at the time of issue. EPR Architects Limited accepts no liability for any alterations or additions to or discrepancies arising out of any change to such project information that occurs to the information after it is issued by EPR Architects Limited.
 5. This drawing does not contain shared coordinates and is not issued for coordination purposes.

| No. | Revision | Date | Initial | Chk'd |
|-----|----------------------------------|----------|---------|-------|
| 3 | P03 - Planning Issue | 08.11.19 | LOG | AJ |
| 2 | P02 - Preliminary Planning Issue | 26.10.19 | LOG | AJ |
| 1 | P01 - Preliminary Planning Issue | 25.10.19 | LOG | CT |

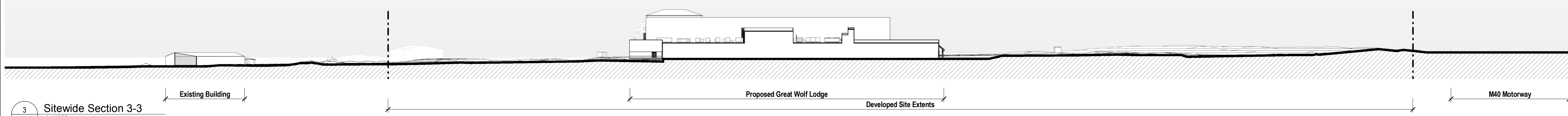
Notes:
 Drawing based upon information received from the Client:
 1. OS Map - file dated 2019-02-08
 2. Topographic survey - file dated 2019-04-12



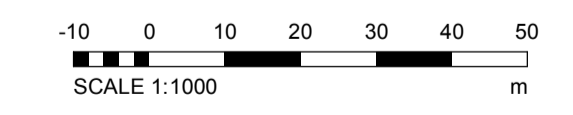
1 Site Section 1-1
1:1000



2 Site Section 2-2
1:1000



3 Site Section 3-3
1:1000



EPR Architects
 30 Millbank, London SW1P 4DU
 +44(0)20 73278000
 www.epr.co.uk

Proposed Great Wolf Lodge
 Chesterton, Bicester, Oxfordshire

Proposed Site Sections
 Scale @A1 Status Revision
 As indicated Planning 3

| Project Code | Originator | Zone | Level | Type | Role | Class | Number |
|--|------------|------|-------|------|------|-------|--------|
| 10875 - EPR - 00 - ZZ - GS - A - TP - 0103 | | | | | | | |