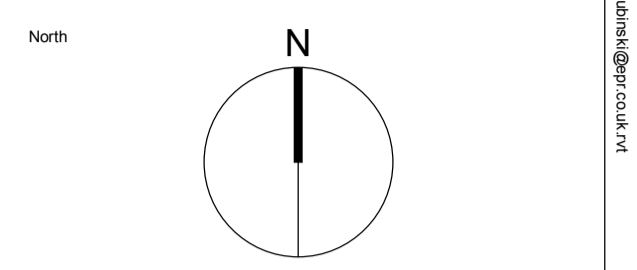


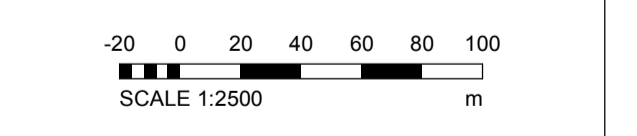
Keyplan



Notes:
 1. Do not scale
 2. Contractor to check all dimensions and report omissions and errors to the Architect
 3. EPR Architects accepts no liability for use of this drawing by parties other than the party for whom it was prepared or for purposes other than those for which it was prepared.
 4. This drawing is issued in dwg/print format as an uncontrolled version to enable the recipient to prepare their own documents/drawings/models for which they are solely responsible. This drawing is based on project information current at the time of issue. EPR Architects Limited accepts no liability for any alterations or additions to or discrepancies arising out of any change to such project information that occurs to the information after it is issued by EPR Architects Limited.
 5. This drawing does not contain shared coordinates and is not issued for coordination purposes.

No.	Revision	Date	Initial	Chk'd
3	P03 - Planning Issue	08.11.19	LOG	AJ
2	P02 - Preliminary Planning Issue	26.10.19	LOG	AJ
1	P01 - Preliminary Planning Issue	25.10.19	LOG	CT

Notes:
 Drawing based upon information received from the Client:
 1. OS Map - file dated 2019-02-08
 2. Topographic survey - file dated 2019-04-12



EPR Architects
 30 Millbank, London SW1P 4DU
 +44(0)20 7327800
 www.epr.co.uk

Proposed Great Wolf Lodge
 Chesterton, Bicester, Oxfordshire

Location Plan

Scale	Status	Revision
1:2500	Planning	3

Project Code: 10875 - EPR - 00 - ZZ - DR - A - TP-0100

C:\Projects\10875 - EPR - 00 - ZZ - DR - A - TP-0100 - Location Plan.dwg

2019-11-08 11:30:07