



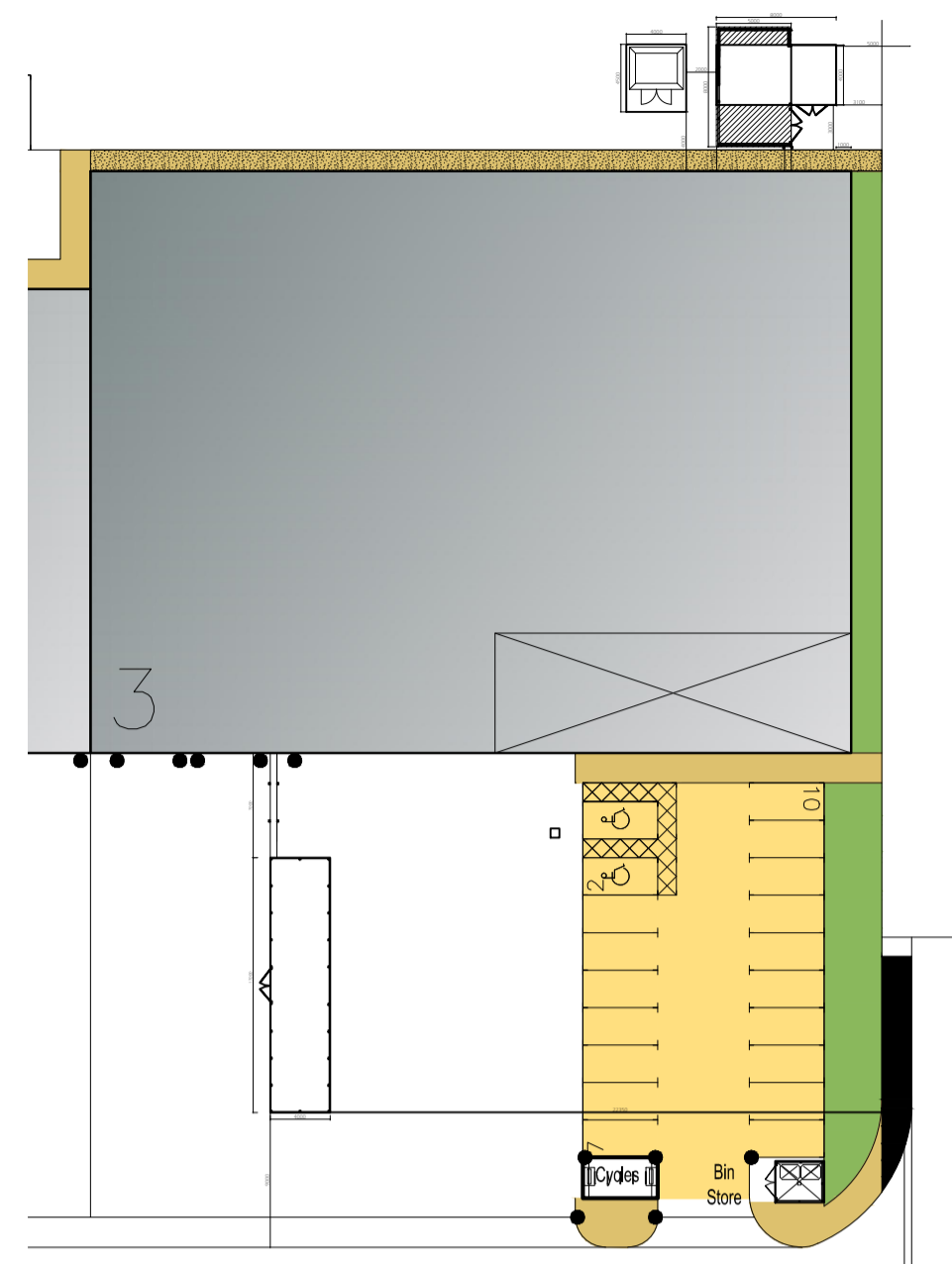
Example of the type of bridging frame that will be used.



Sub station elsewhere on site.

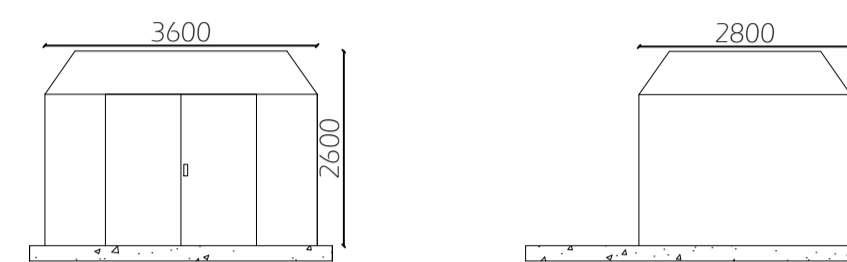


Proposed Location



Proposed Site Plan
Scale 1:500

New GRP substation for use by SSE for new 800 KVA electrical supply. Finish to match substations on surrounding site. Substation sited on concrete pad 4.5m x 4m. Exact size may vary slightly as subject to SSE.



New GRP Sub Station Front & Side Elevation

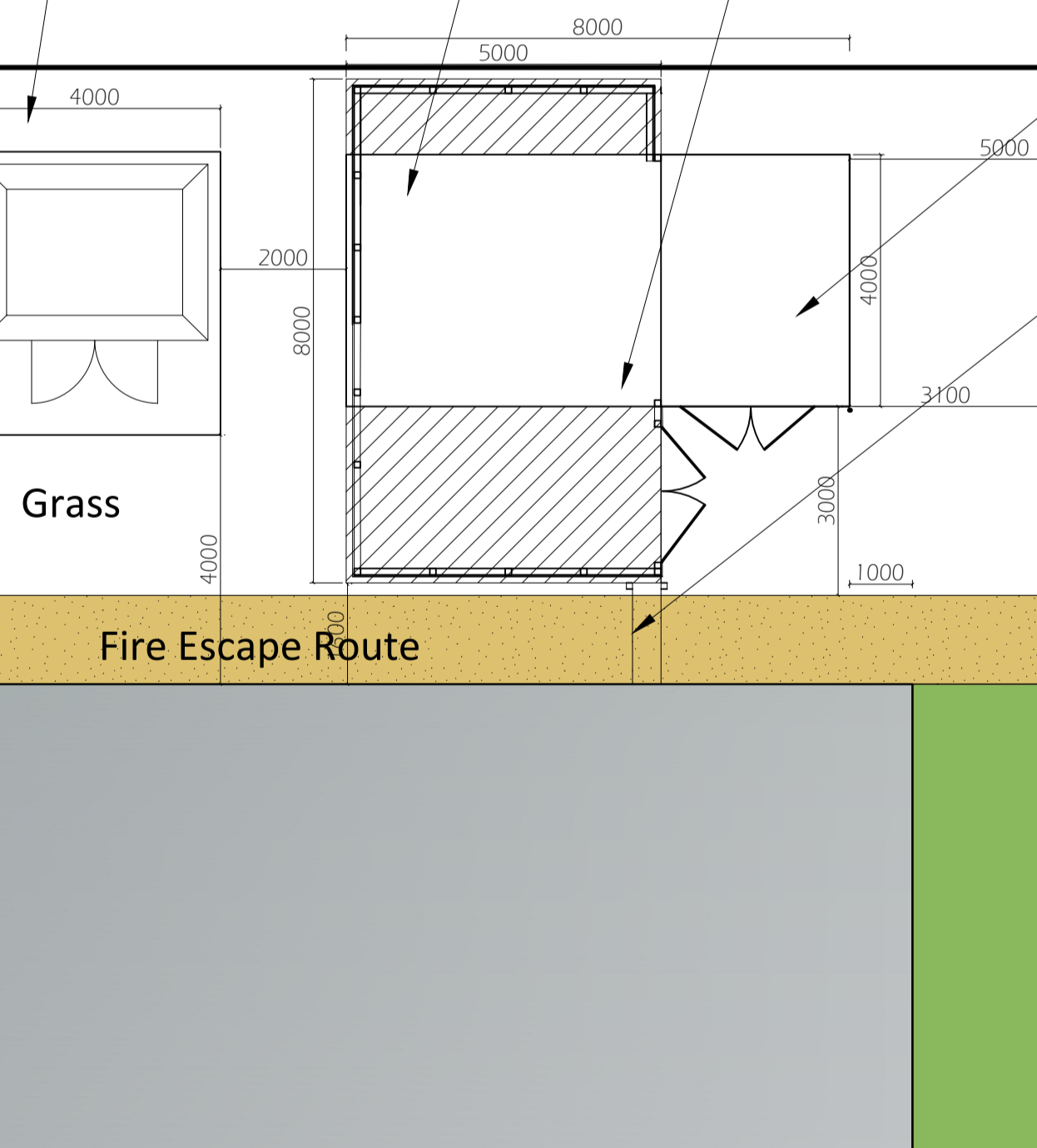
KEY	
①	Composite roofing system
②	Horizontal built-up cladding system - Corus Colourcoat Prisma - Sirius
③	Horizontal built-up cladding system - Corus Colourcoat Prisma - Orion
④	Vertical built-up cladding system - Corus Colourcoat Prisma - Sirius
⑤	Microrib composite cladding - Corus Colourcoat Prisma - Zeus
⑥	Steel fire escape door, colour RAL 7016
⑦	Loading door, colour RAL 5010
⑧	Rainwater pipe, colour Sirius
⑨	Main entrance canopy 1.5m projection, painted steel frame
⑩	PPC Aluminium double glazed curtain walling, colour RAL 7016
⑪	PPC Aluminium double glazed windows, colour RAL 7016
⑫	Eaves and verge flashings, colour Sirius
⑬	Look-a-like panels - obscured glass
⑭	Steel fire escape door, colour RAL 5010
⑮	Aluminium insulated panel polyester powder coated to match framing

New GRP substation for use by SSE for new 800 KVA electrical supply. Finish to match substations on surrounding site. Substation sited on concrete pad.

Concrete pad to form base of compressor house and plant enclosure.

Hit and miss timber fencing 1.8metres high with double gate access to form plant enclosure. Finish to match bin store to front of site.

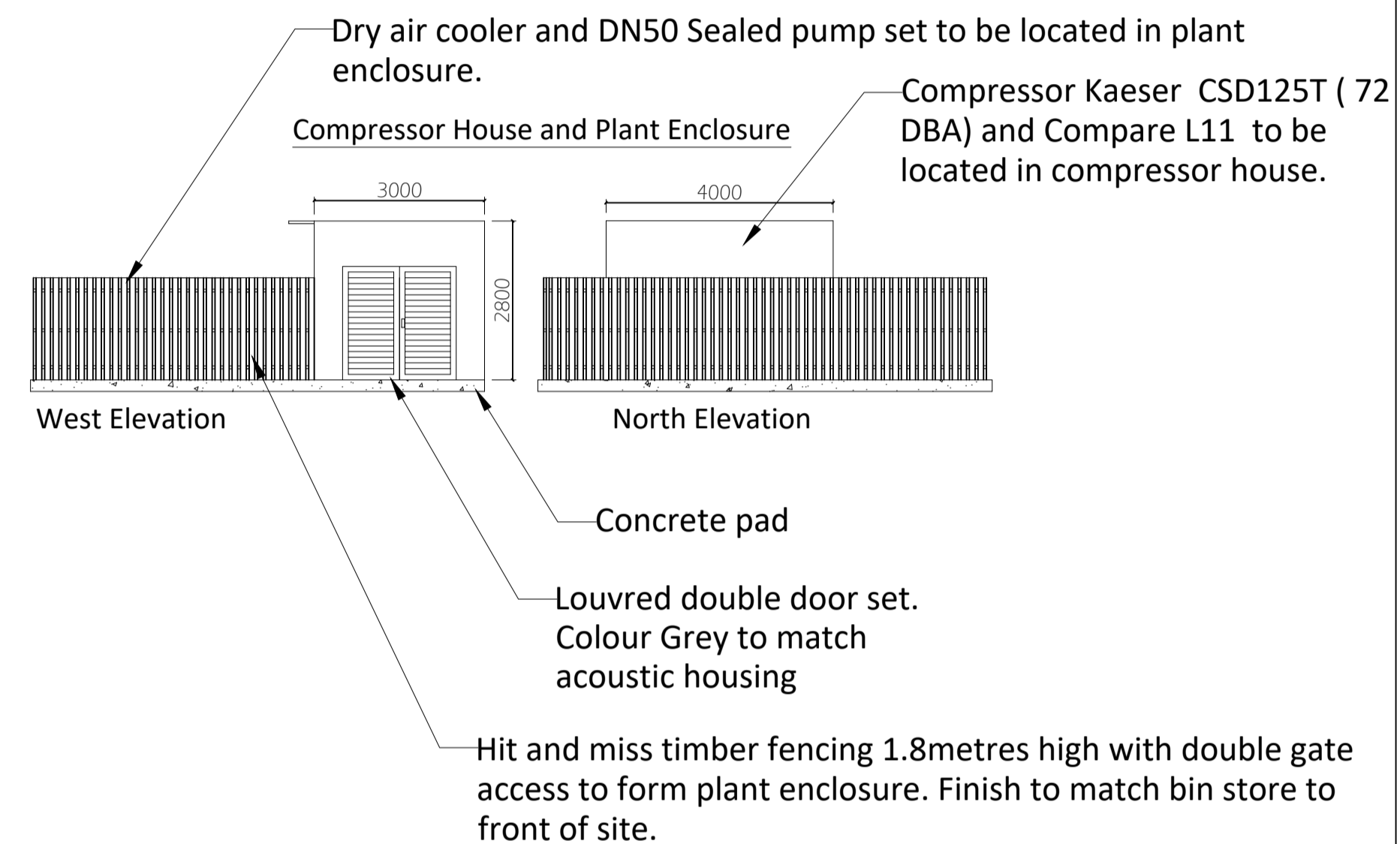
3no small existing trees to be relocated within surrounding area.



Proposed New Substation, Plant Enclosure and Compressor house

Polyester powder painted acoustic house for compressors with louvred double door access. Colour Grey

Unistrut framework to provide bridge for service lines into building. Height of horizontal frame set at 2.8 metres to avoid clashes with people using the fire escape route below.



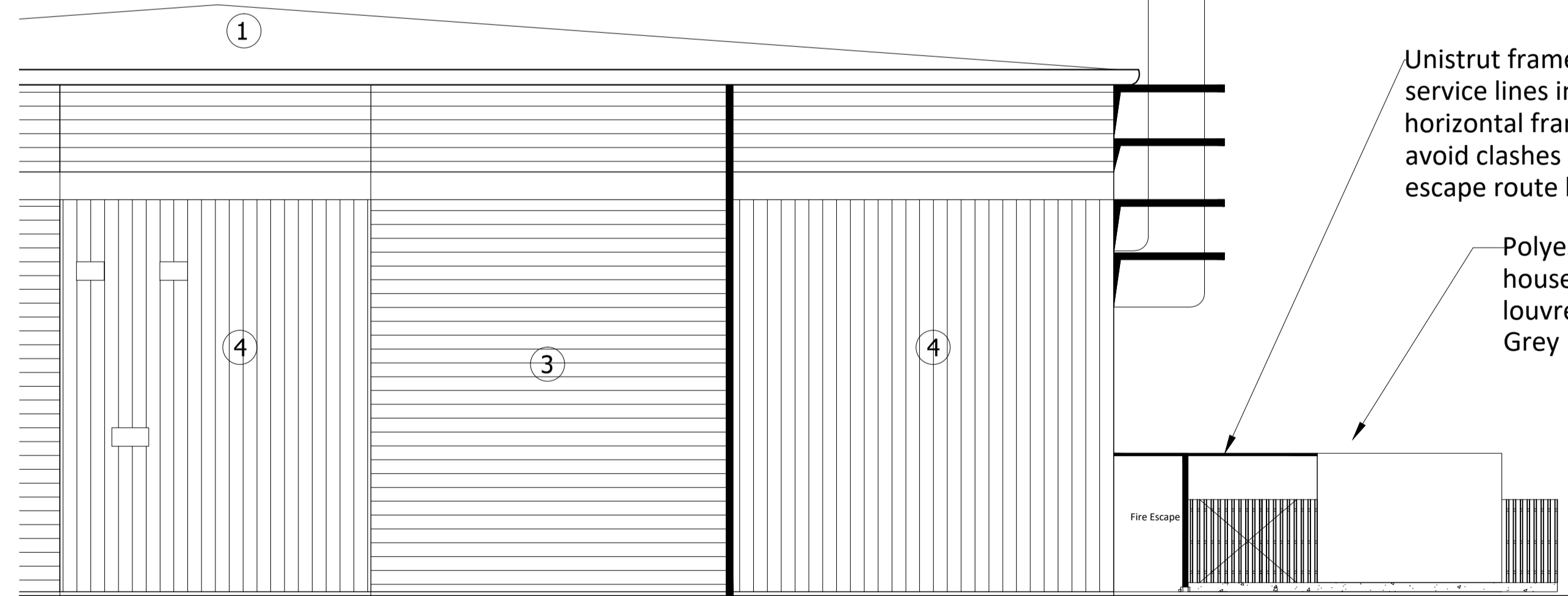
West Elevation

North Elevation

Concrete pad

Louvred double door set. Colour Grey to match acoustic housing

Hit and miss timber fencing 1.8metres high with double gate access to form plant enclosure. Finish to match bin store to front of site.



South Elevation

Unistrut framework to provide bridge for service lines into building. Height of horizontal frame set at 2.8 metres to avoid clashes with people using the fire escape route below.

Polyester powder painted acoustic house for compressors with louvred double door access. Colour Grey

Plot Boundary

A- Gas Store Location Changed

B- Plant enclosure to rear of site extended by about 20m2 and double gate access moved.

Project Stage **PLANNING**

Project
PROJECT VULCAN
FIT OUT & RELOCATION TO WAREHOUSE
UNIT 9, LONGLANDS ROAD, OX26 5AH

Client
HARDIDE COATINGS LTD

Drawing Title
PROPOSED SUBSTATION, COMPRESSOR HOUSE
AND PLANT ENCLOSURE
UNIT 9, LONGLANDS ROAD, OX26 5AH

Scale
1:100 @ A1

Drawn
EC

Checked

Date
APR 2019

HBE
Hollybrook Estates
Horwell Innovation Centre
173 Curie Avenue, Horwell, OX11 00G
W: hollybrookestates.co.uk
T: + 44 (0)1235 838606

Project No.

HBE117

Drawing No.

P104

Revision

B