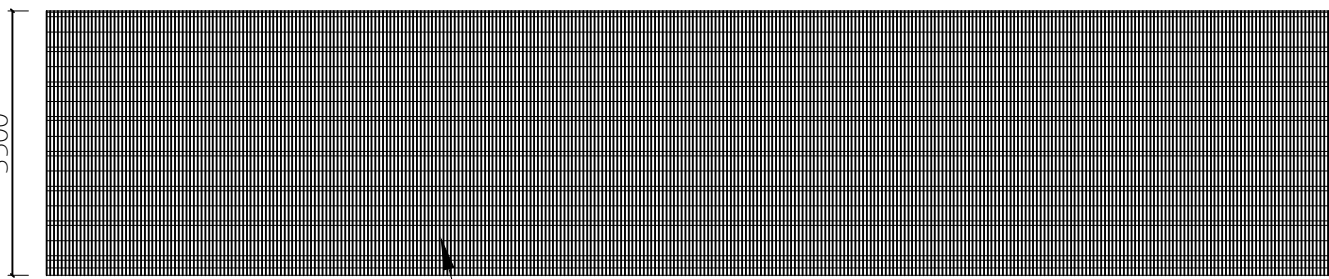


Paladin Fencing elsewhere on Site



South Elevation

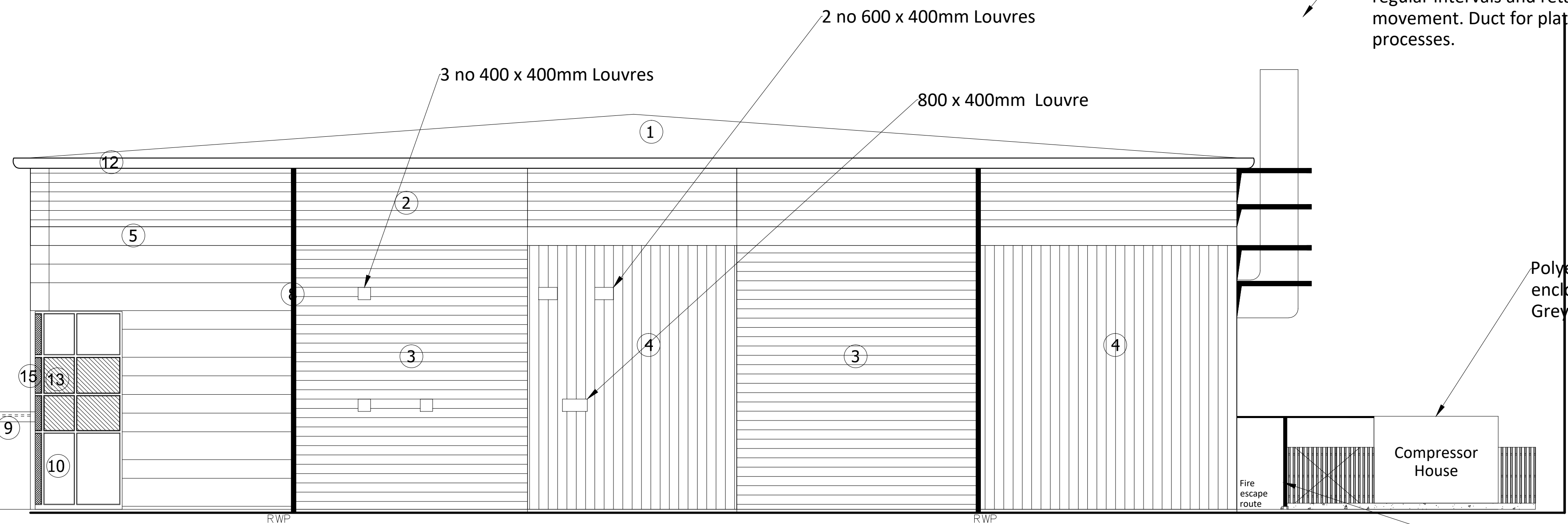
Metal Paladin fencing 3.5 metres high style to match Paladin fencing elsewhere on site. Purpose for gas bottle storage.

Unistrut framework to provide bridge for gas lines into building. Height of horizontal frame set at 3 metres to avoid clashes with people



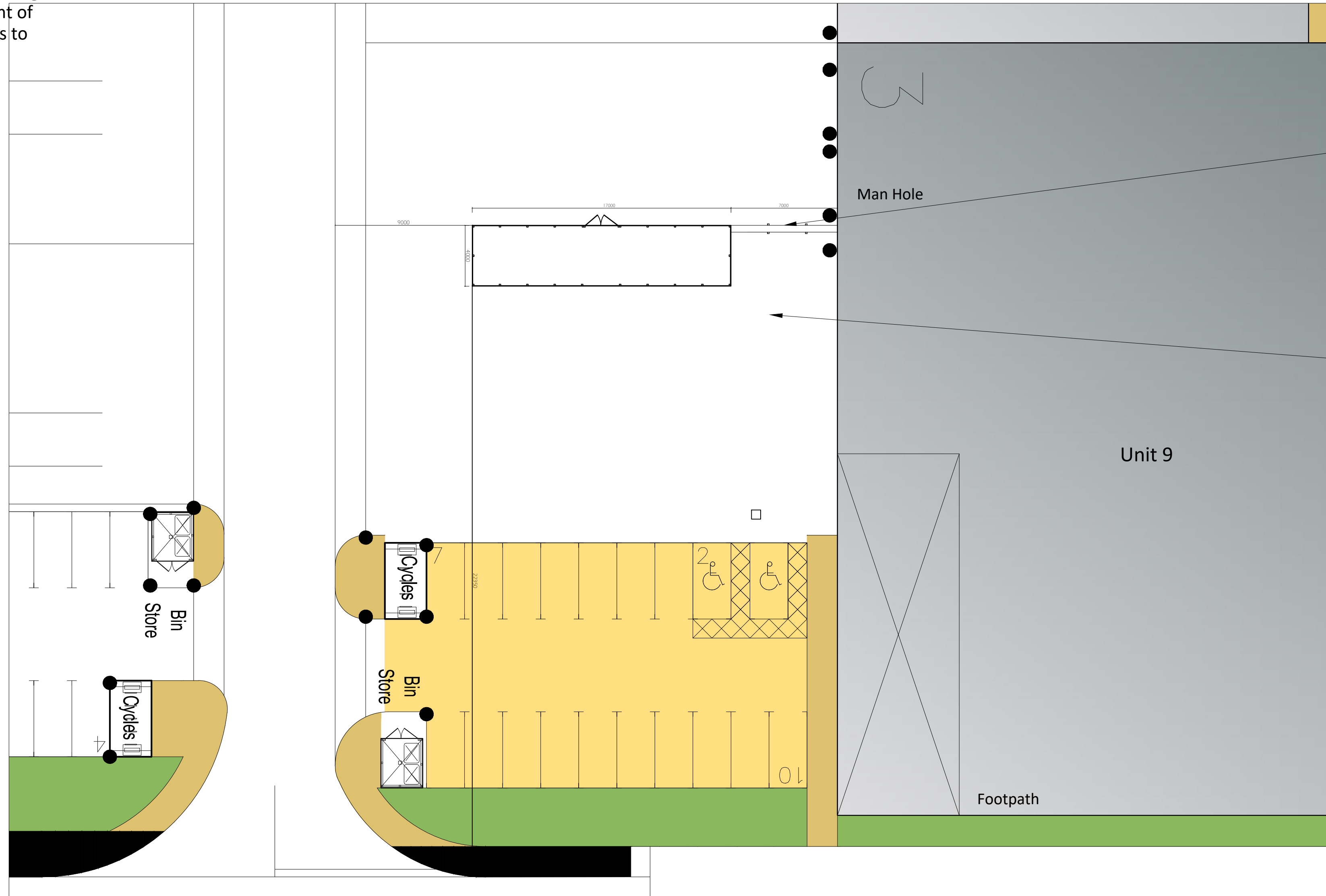
Example of the type of bridging frame that will be used.

Colour of new louvres to match existing cladding.



Circular Grey extract duct/ stack diameter 1.22 metres. Exiting building at 6 metres above FFL. Height 1.44 metres above ridge. Fixed with Cantilever brackets at regular intervals and retaining bracket to prevent lateral movement. Duct for plating, coating and scrubbing processes.

Polyester powder painted acoustic enclosure for compressors. Colour Grey. Sited on concrete pad



Unistrut framework to provide bridge for Compressed air and service lines into building. Height of horizontal frame set at 2.8 metres to avoid clashes with people using the fire escape route below

Unistrut framework to provide bridge for gas lines into building. Height of horizontal frame set at 3 metres to avoid clashes with people using the footpath below.

Metal Paladin fencing 3.5 metres high with double gate access style to match Paladin fencing elsewhere on site. Purpose for gas bottle storage.

KEY	
①	Composite roofing system
②	Horizontal built-up cladding system - Corus Colourcoat Prisma - Sirius
③	Horizontal built-up cladding system - Corus Colourcoat Prisma - Orion
④	Vertical built-up cladding system - Corus Colourcoat Prisma - Sirius
⑤	Microrib composite cladding - Corus Colourcoat Prisma - Zeus
⑥	Steel fire escape door, colour RAL 7016
⑦	Loading door, colour RAL 5010
⑧	Rainwater pipe, colour Sirius
⑨	Main entrance canopy 1.5m projection, painted steel frame
⑩	PPC Aluminium double glazed curtain walling, colour RAL 7016
⑪	PPC Aluminium double glazed windows, colour RAL 7016
⑫	Eaves and verge flashings, colour Sirius
⑬	Look-a-like panels - obscured glass
⑭	Steel fire escape door, colour RAL 5010
⑮	Aluminium insulated panel polyester powder coated to match framing

Gas Bottle Store on Plan 1:200@A1

A- Hit and Miss Fencing Changed to Paladin Fencing-06.05.19

B- Location of Gas Store Moved

C- Louvres added to South Elevation

Project Stage **PLANNING**

Drawing Title  
PROPOSED GAS STORE  
UNIT 9, LONGLANDS ROAD, OX26 5AH

Project  
PROJECT VULCAN  
FIT OUT & RELOCATION TO WAREHOUSE  
UNIT 9, LONGLANDS ROAD, OX26 5AH

Scale  
1:100 @ A1

Client  
HARDIDE COATINGS LTD

Drawn  
EC

Checked

Date  
APR 2019

**HBE**  
Hollybrook Estates  
Hollybrook Innovation Centre  
173 Curie Avenue, Horwell, OX11 00G  
W: hollybrookestates.co.uk  
T: + 44 (0)1235 838606

Project No.  
**HBE117**

Drawing No.  
**P103**

Revision  
**C**