

KEY	
①	Composite roofing system
②	Horizontal built-up cladding system - Corus Colourcoat Prisma - Sirius
③	Horizontal built-up cladding system - Corus Colourcoat Prisma - Orion
④	Vertical built-up cladding system - Corus Colourcoat Prisma - Sirius
⑤	Microrib composite cladding - Corus Colourcoat Prisma - Zeus
⑥	Steel fire escape door, colour RAL 7016
⑦	Loading door, colour RAL 5010
⑧	Rainwater pipe, colour Sirius
⑨	Main entrance canopy 1.5m projection, painted steel frame
⑩	PPC Aluminium double glazed curtain walling, colour RAL 7016
⑪	PPC Aluminium double glazed windows, colour RAL 7016
⑫	Eaves and verge flashings, colour Sirius
⑬	Look-a-like panels - obscured glass
⑭	Steel fire escape door, colour RAL 5010
⑮	Aluminium insulated panel polyester powder coated to match framing

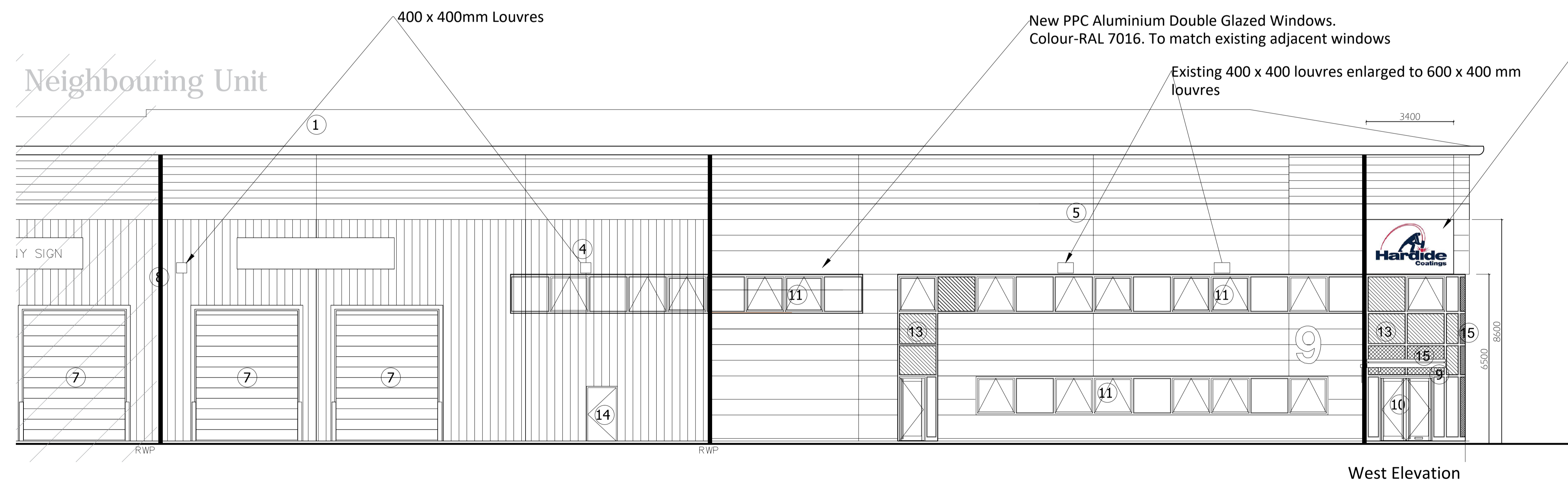
East Elevation

Colour of new louvres to match existing cladding.

600 x 400mm Louvre

3500 x 3500mm Louvre

2no 1000mm extract ducts omitting warm air only from the Reactor extract fans. Ducts protruding 600 mm with 450mm chamfer and bird mesh




West Elevation

New Company Sign comprising VERSA Frame kit Colour-White (RAL 9016) with company logo printed on White Aluminium Composite Panel that slides into frame. Fixed to cladding and frame below. Sign non-illuminated.



Mock Up Of Proposed Company Sign

- A- Stack location changed
- B- Mechanical Louvres added

Project Stage	PLANNING	Drawing Title	PROPOSED WEST & EAST ELEVATIONS UNIT 9, LONGLANDS ROAD, OX26 5AH	 <b>HBE</b> Hollybrook Estates Horwell Innovation Centre 173 Curie Avenue, Horwell, OX11 0QG W: hollybrookestates.co.uk T: +44 (0)1235 838606							
Project	PROJECT VULCAN FIT OUT & RELOCATION TO WAREHOUSE UNIT 9, LONGLANDS ROAD, OX26 5AH	Scale	1:100 @ A1								
Client	HARDIDE COATINGS LTD	Drawn	EC	Checked	EC	Date	APR 2019	Project No.	HBE117		
								Drawing No.	P102	Revision	B