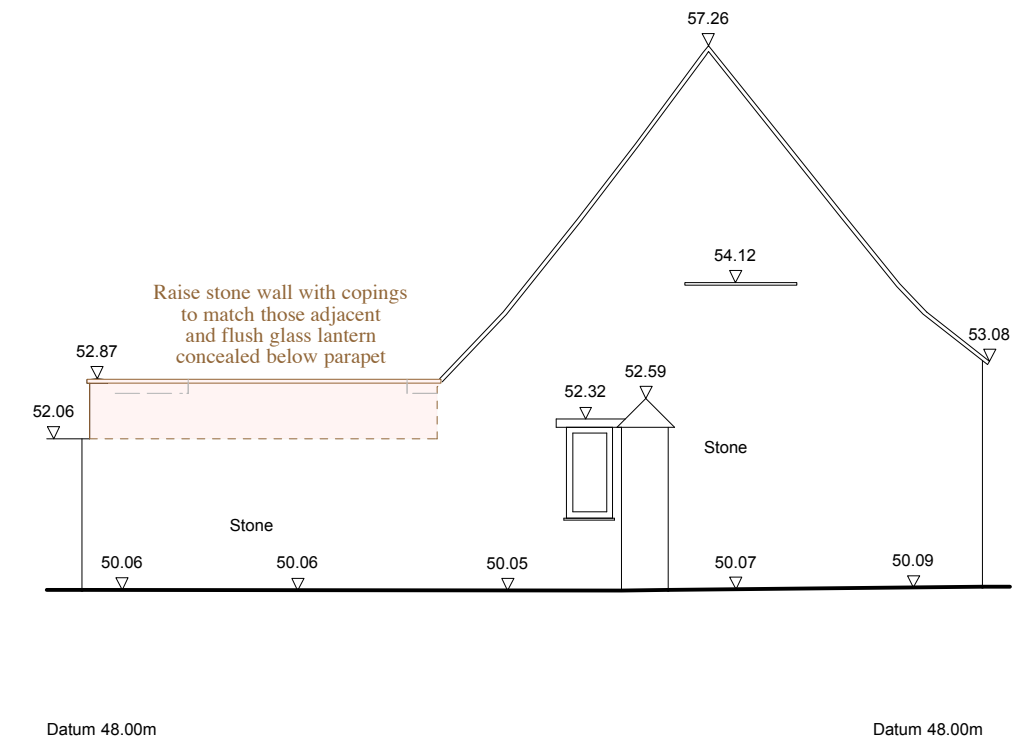
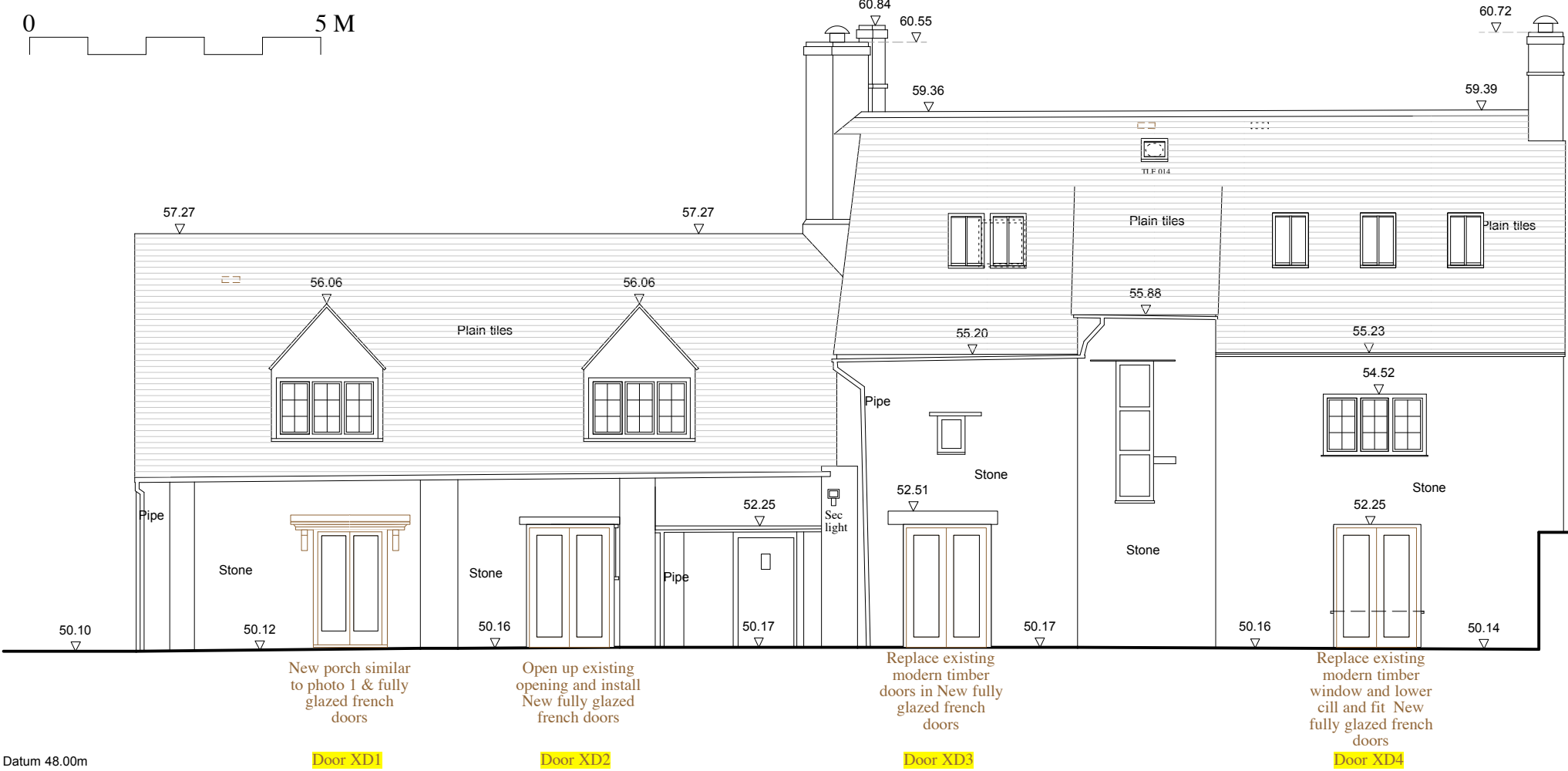


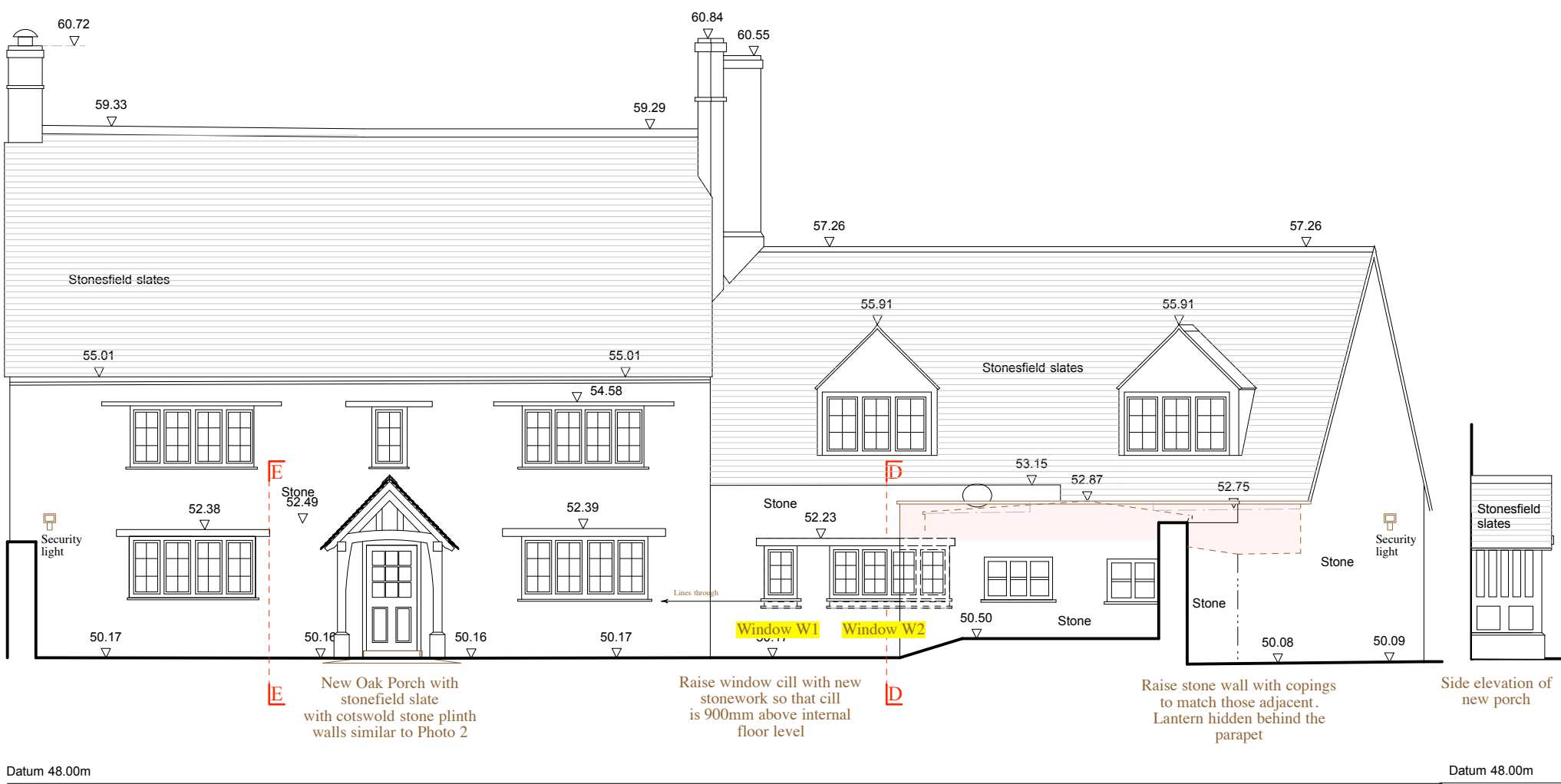


**IMPORTANT NOTE**  
 This drawing has been prepared solely for the purpose of gaining planning approval. The architects do not hold themselves responsible for any materials use, or construction method or technique, which may be implied or inferred.

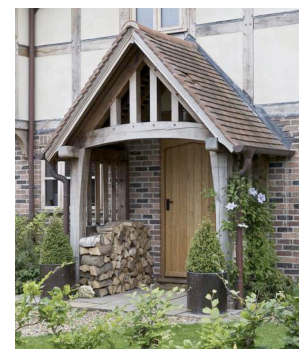


**Elevation AA**

**Elevation BB**



**Photo 1 - Door canopy**



**Photo 2 - Typical Oak Porch**

Rev E July 19 Screen shown to floor with flush lantern  
 Rev D July 19 orangerie simplified and flushglaze lantern option shown  
 Rev C July 19 orangerie simplified and lantern option shown  
 Rev B May 19 Porch amended  
 Rev A May 19 notes added re windows

**NICHOLS BROWN WEBBER**  
 ARCHITECTS AND LANDSCAPE PLANNERS

POND HOUSE, NORTHEND, HENLEY-ON-THAMES, OXON RG9 6LG  
 TEL: TURVILLE HEATH (01491 638 536), FAX (01491 638 228)

PROJECT  
**Elm Tree House Phase 2**

DRAWING TITLE  
**Proposed house elevations**

PLOT DATE	16.7.19	CHECKED
SCALE	1/50 @ A1 1/100 @ A3	STATUS P
PROJECT NO	665/3	REVISION E
DRAWING NO	P10	

email: enquiries@nbwarchitects.co.uk

**Elevation CC**

**Elevation EE**

**Elevation DD**