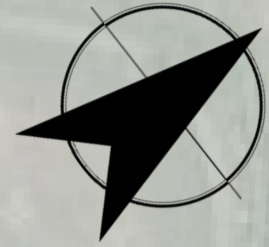




APPENDIX A

Site Masterplans



UNIT STUDIES VIEW 01



SITE VISUAL 01



UNIT STUDIES VIEW 02



UNIT STUDIES VIEW 03



SITE VISUAL 03



PRECEDENT STUDIES

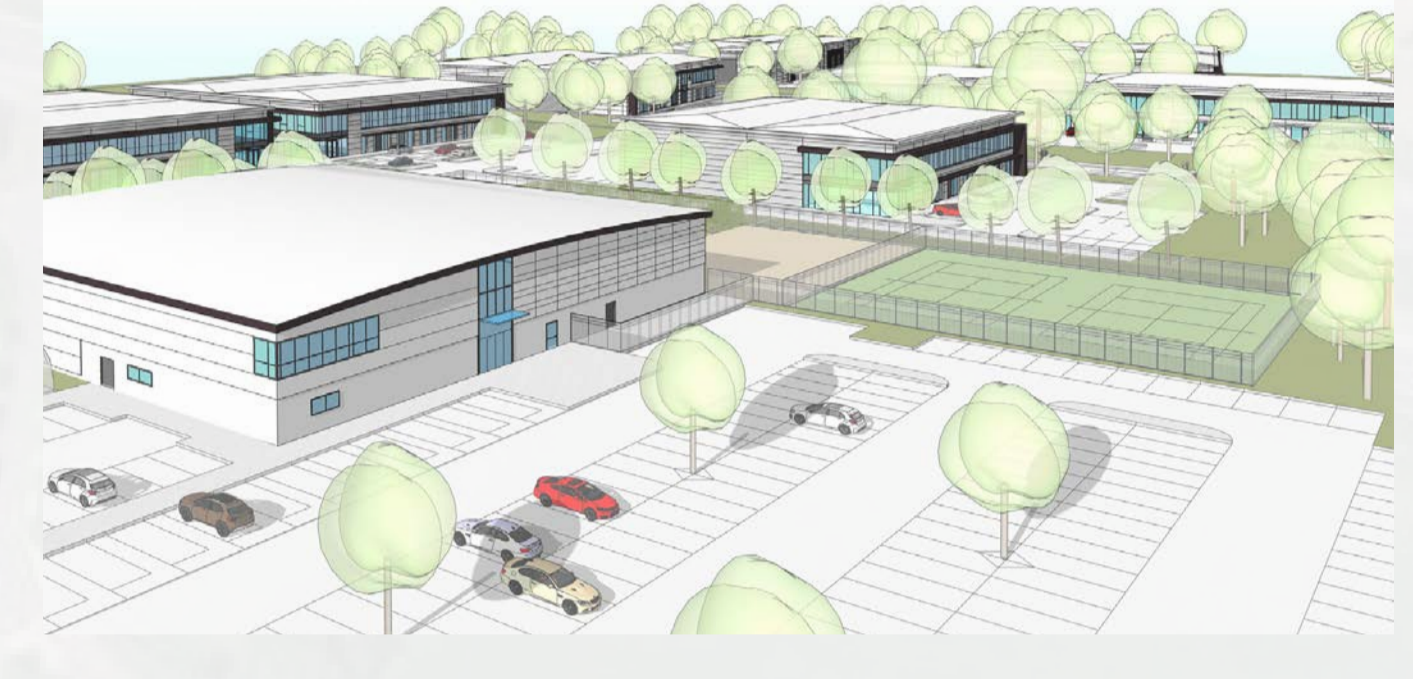




UNIT STUDIES VIEW 01



SITE VISUAL 01



UNIT STUDIES VIEW 02



UNIT STUDIES VIEW 03

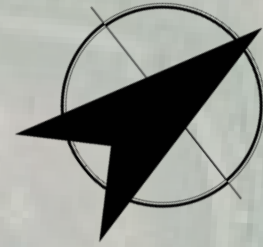


SITE VISUAL 03



PRECEDENT STUDIES





UNIT STUDIES VIEW 01



SITE VISUAL 01



SITE VISUAL 02



UNIT STUDIES VIEW 02

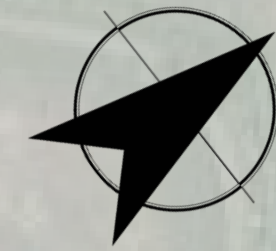


UNIT STUDIES VIEW 03



PRECEDENT STUDIES





UNIT STUDIES VIEW 01



SITE VISUAL 01



SITE VISUAL 02



UNIT STUDIES VIEW 02



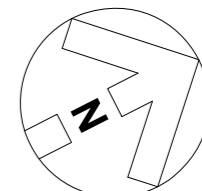
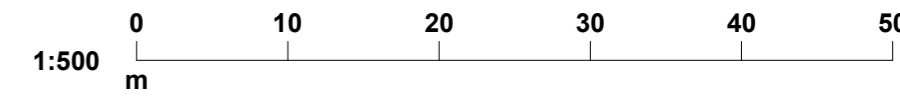
UNIT STUDIES VIEW 03



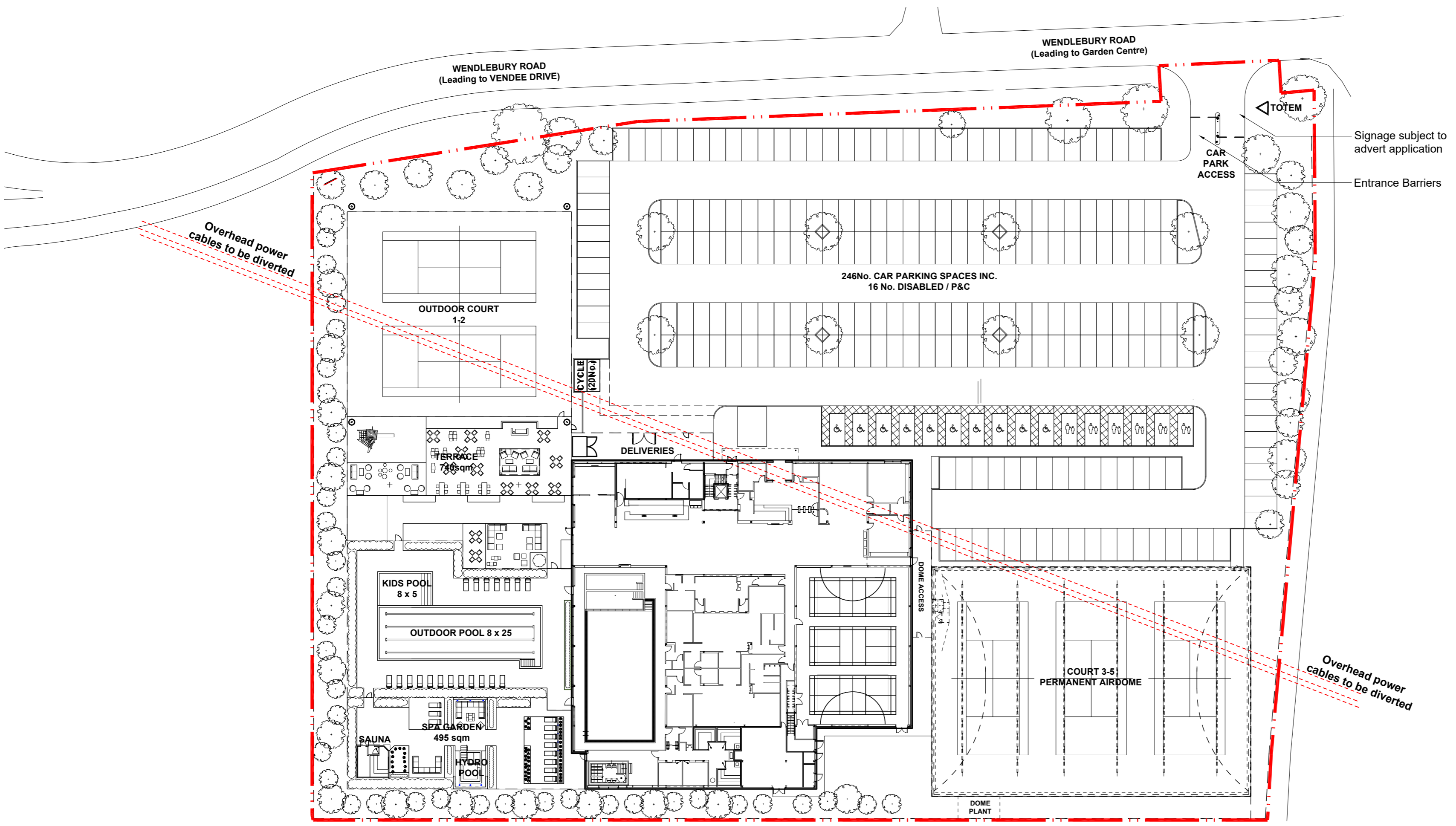
PRECEDENT STUDIES



NOTES:



RED LINE SITE AREA 4.1 acres



REVISION: P01	BY: JAH	CHECKED: CM	DATE: 22/07/2019
Cycle parking provision increased to 20no.			
REVISION: *	BY: AJ	CHECKED: CM	DATE: 07/06/2019
Planning Issue			

PLANNING

PLOT DATE:



CLIENT:

CATALYST BICESTER

PROJECT:

PROPOSED SITE PLAN

DRAWING:	SCALE:	DATE:
DRAWN BY: ARB	1:500 @ A2	MAY 2019

Hadfield Cawkwell Davidson

Broomgrove Lodge, 13 Broomgrove Rd, Sheffield, S10 2LZ T 0114 266 8181 www.hcd.co.uk

- Dimensions are in millimeters, unless stated otherwise.
 - Scaling of this drawing is not recommended.
 - It is the recipient's responsibility to print this document to the correct scale.
 - All relevant drawings and specifications should be read in conjunction with this drawing.



SCHEDULE OF ACCOMMODATION

PHASE IA	- 2.56 Acres (1.043 Ha)
PHASE IA Land to be Retained for Future Phase II Road Widening	- 0.02 Acres (0.01 Ha)
Total Area PHASE IA	- 2.58 Acres (1.044 Ha)

PHASE IB	- 6.56 Acres (2.65 Ha)
PHASE IB Land to be Retained for Future Phase II Road Widening	- .25 Acres (0.10 Ha)
Total Area PHASE IB	- 6.81 Acres (2.75 Ha)

TOTAL AREA - 9.39 Acres (3.794 Ha)

AREA PHASE II - 37.6 Acres (15.22 Ha)

- BOUNDARY**
- LAND TO BE RETAINED FOR PHASE II ROAD WIDENING**
- Land Retained For the Future Phase II Road Widening - 1.84Acres**
- Not Part of Phase I Planning Application**



rev | amendments | by | ckd | date

Bicester Gateway, Bicester
 Masterplan - Phase 1&2



Newark Beacon Innovation Centre, Calderdale Way, Newark, Nottinghamshire NG24 2TN
 +44 (0)1636 653027 +44 (0)1636 653010 info@umcarchitects.com

Drawing Status:	Planning
Drawn / Checked:	GW / GMc
Date:	12.12.2016
Scale:	1:1250 @ A1
Drawing no:	Revision:
16084 P103	P2

