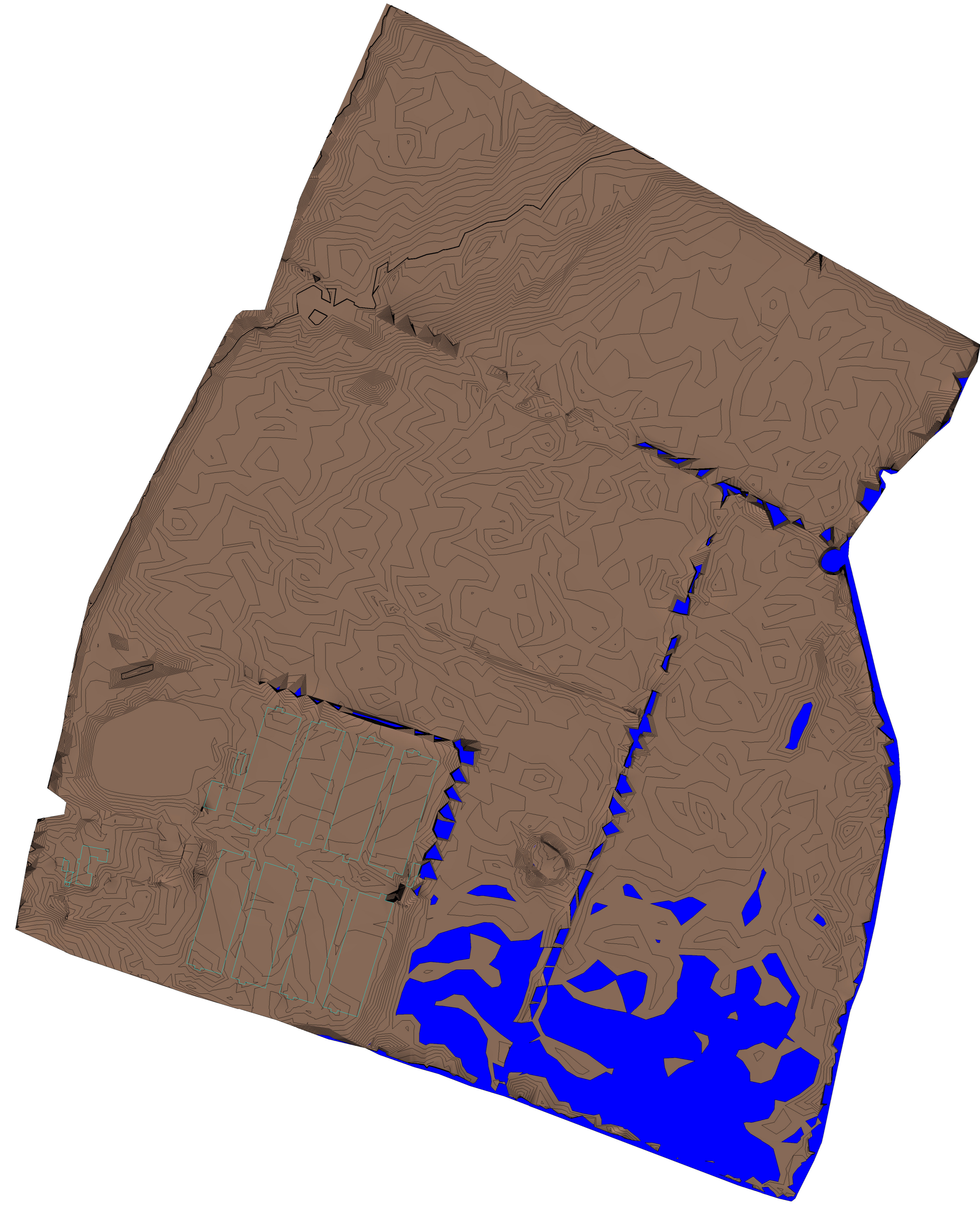
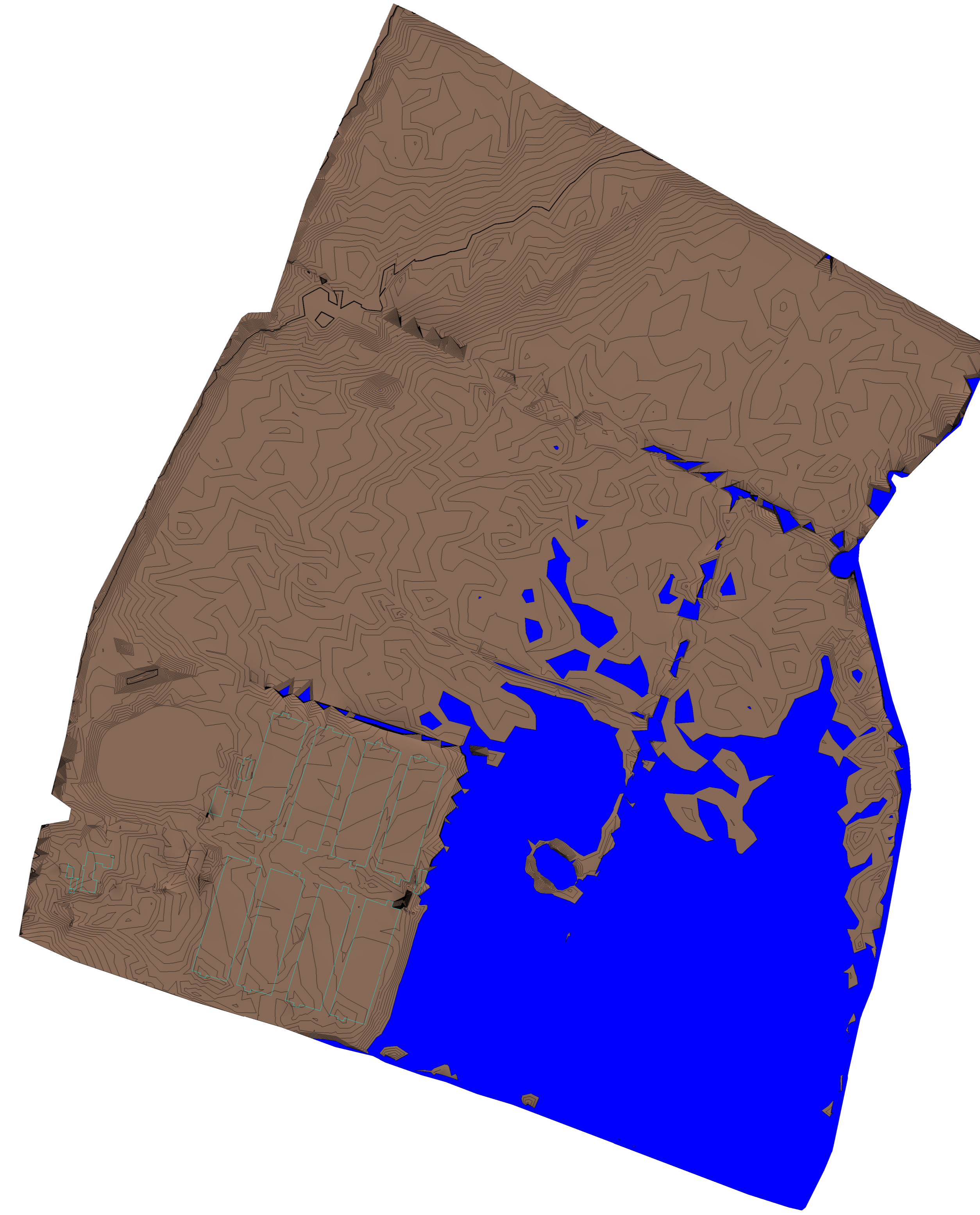


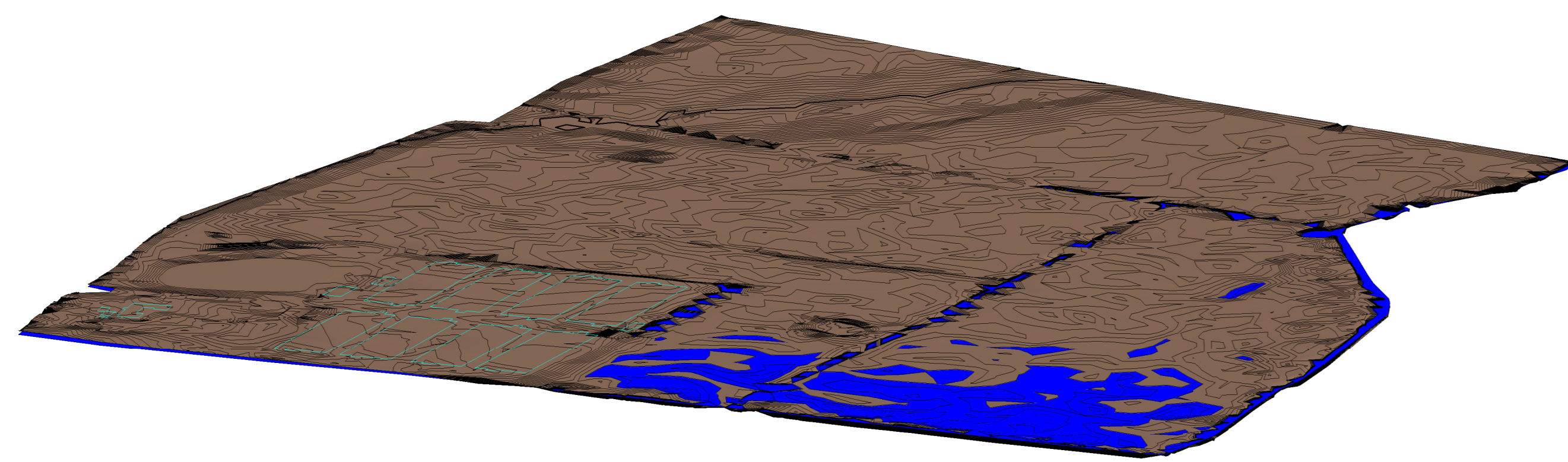
| Flood Level                              | Expected Flood Level (m) |
|--|--------------------------|
| 1 in 5 year (20% AEP)                    | 63.650                   |
| 1 in 20 year (5% AEP)                    | 63.940                   |
| 1 in 100 year (1% AEP)                   | 64.050                   |
| 1 in 100 year + 35% CC (1% AEP + 35% CC) | 64.150                   |
| 1 in 1000 Year (0.1% AEP)                | 64.200                   |



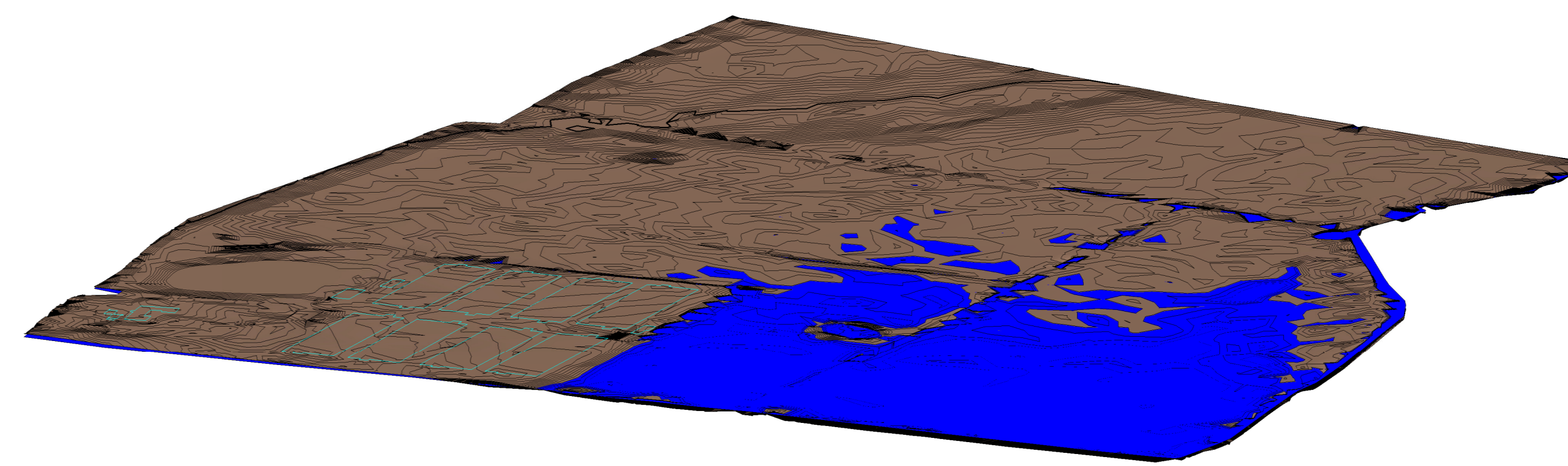
1 63.350m - 63.550m  
1:1500



2 63.550m - 63.750m  
1:1500



10 3D 63.350m - 63.550m



9 3D 63.550m - 63.750m

|   |          |                |
|---|----------|----------------|
| A | 13.06.19 | General Update |
|---|----------|----------------|

| Rev               | Date | Revision Description |
|-------------------|------|----------------------|
| Revision Schedule |      |                      |

**PRELIMINARY**

Promised Land Farm  
Bicester

Client:-  
Albion Land PLC

Modelled Floodplain Flood  
Levels 1 of 2 (Existing)

**BAILEY JOHNSON HAYES**  
Consulting Engineers

MANCHESTER: Garage House, John Dalton Street, Tel: 0161 279 7777 Fax: 0161 236 3552  
ST ALBANS: Phoenix House, 53 Campbell Road, Tel: 01727 841172 Fax: 01727 841055

|                         |              |             |       |
|-------------------------|--------------|-------------|-------|
| Scale: As indicated @A0 | Project Ref: | Drawing No: | Rev.: |
| Date: 11/01/18          | S1358        | Ext-11      | A     |
| Drn: BJH                | Crtd: BJH    |             |       |