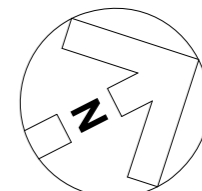




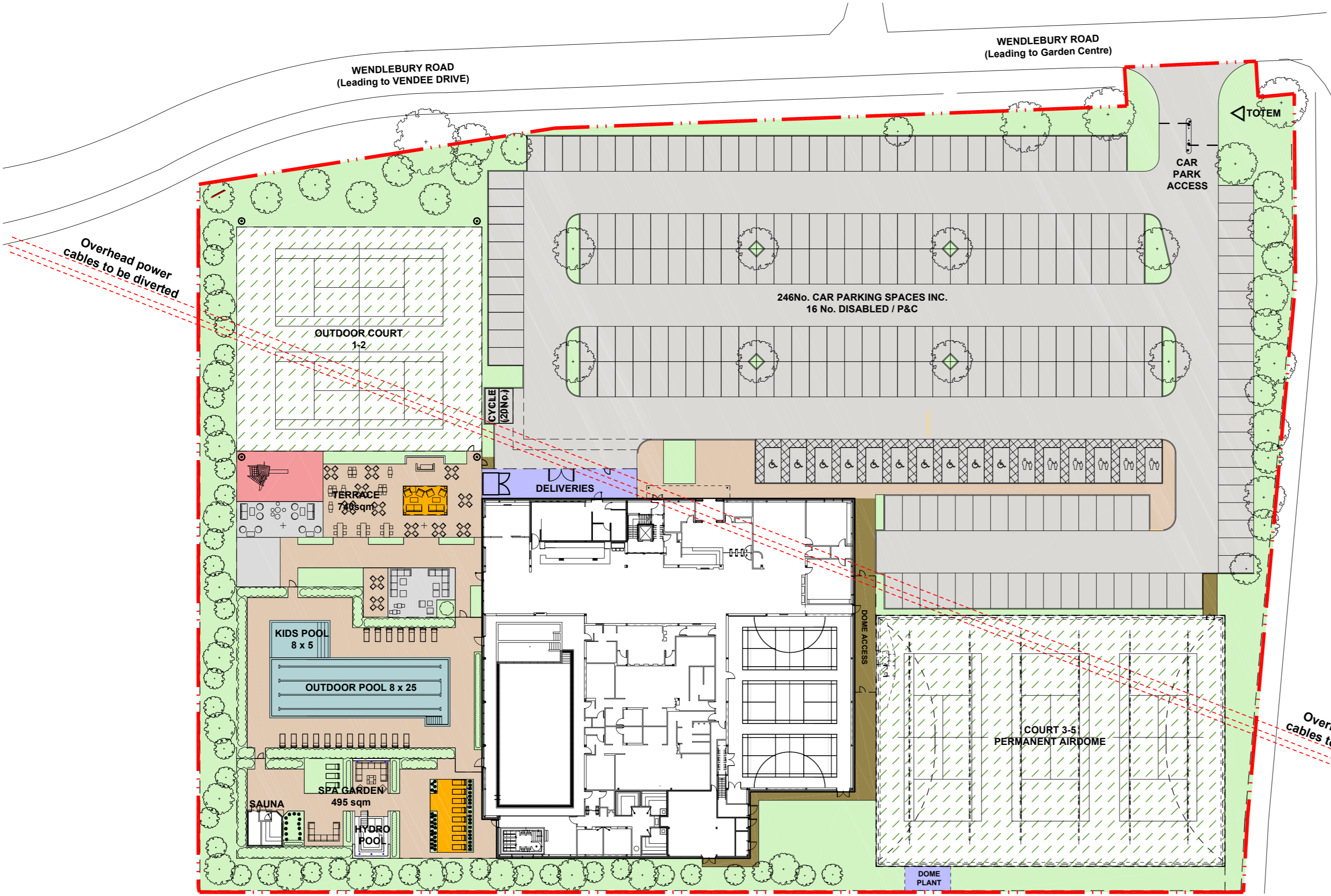
NOTES:



RED LINE SITE AREA 4. 1acres

KEY

- GENERAL VEHICULAR  
Black Tarmacadam Surface finish  
Sub-base build to Civil Engineers spec.
- PLANT/DELIVERY AREA  
Concrete slab. Sub-base build to Civil Engineers spec.
- COURTS - Tennis  
Cushioned Acrylic / Artificial grass surface
- PEDESTRIAN ZONES  
Paving grade asphalt
- PAVING SLABS  
450x450mm, Charcon Andover, Textured Cream
- PAVING SLABS  
450x450mm, Charcon Andover, Midnight Grey
- SOFT LANDSCAPING
- DECKING  
Millboard plank decking with enhanced grain on timber frame, with terram layer & gravel fill
- KIDS PLAY - Soft play / cushioned tarmac.  
Pin kerb edging & substrate by Contractor to provide level 100mm below finish level, soft play wet pour tarmac by DL
- LIGHTING  
Lighting columns to external tennis courts



REVISION: P01 BY: JAH CHECKED: ARB DATE: 22/07/2019  
 Cycle parking provision increased to 20no.  
 REVISION: \* BY: AJ CHECKED: CM DATE: 07/06/2019  
 Planning Issue

# PLANNING

PLOT DATE:

*David Lloyd*  
 CLUBS

CLIENT:

CATALYST BICESTER

PROJECT:

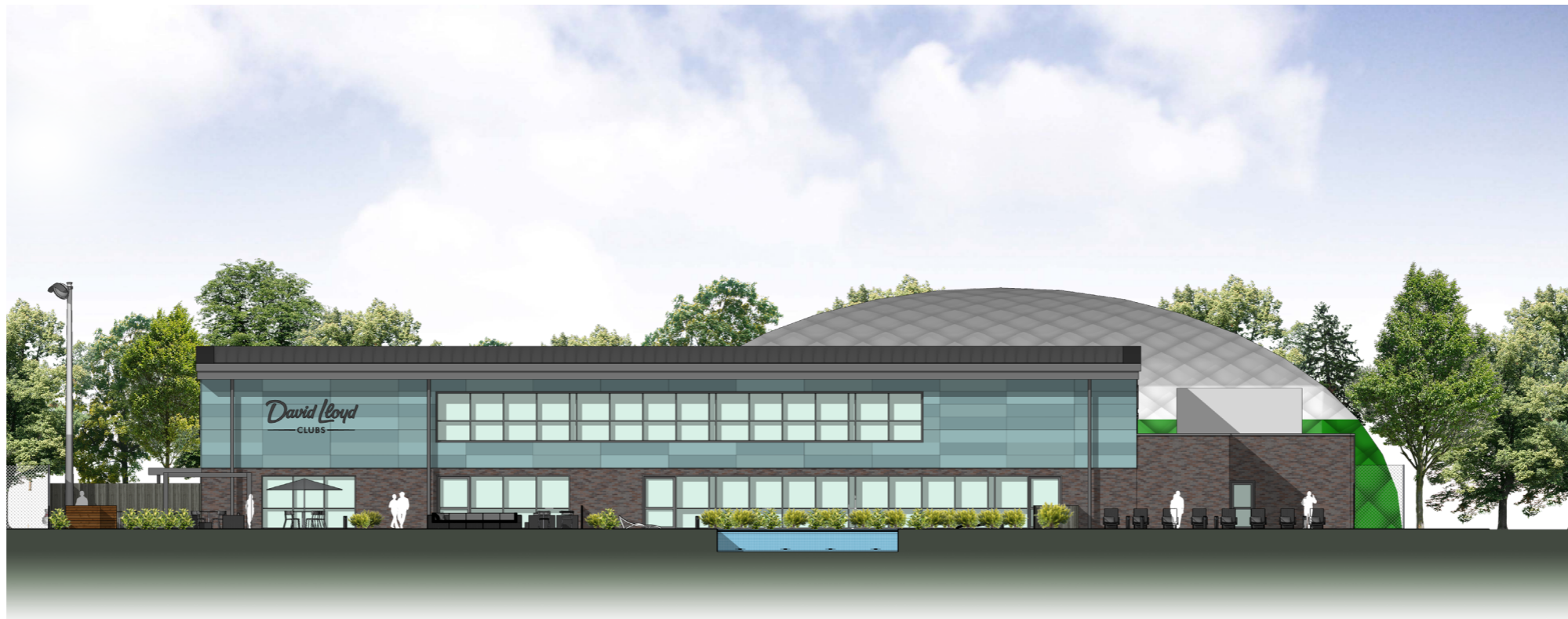
## PROPOSED SURFACING PLAN

DRAWN BY: ARB SCALE: 1:500 @ A2 DATE: MAY 2019

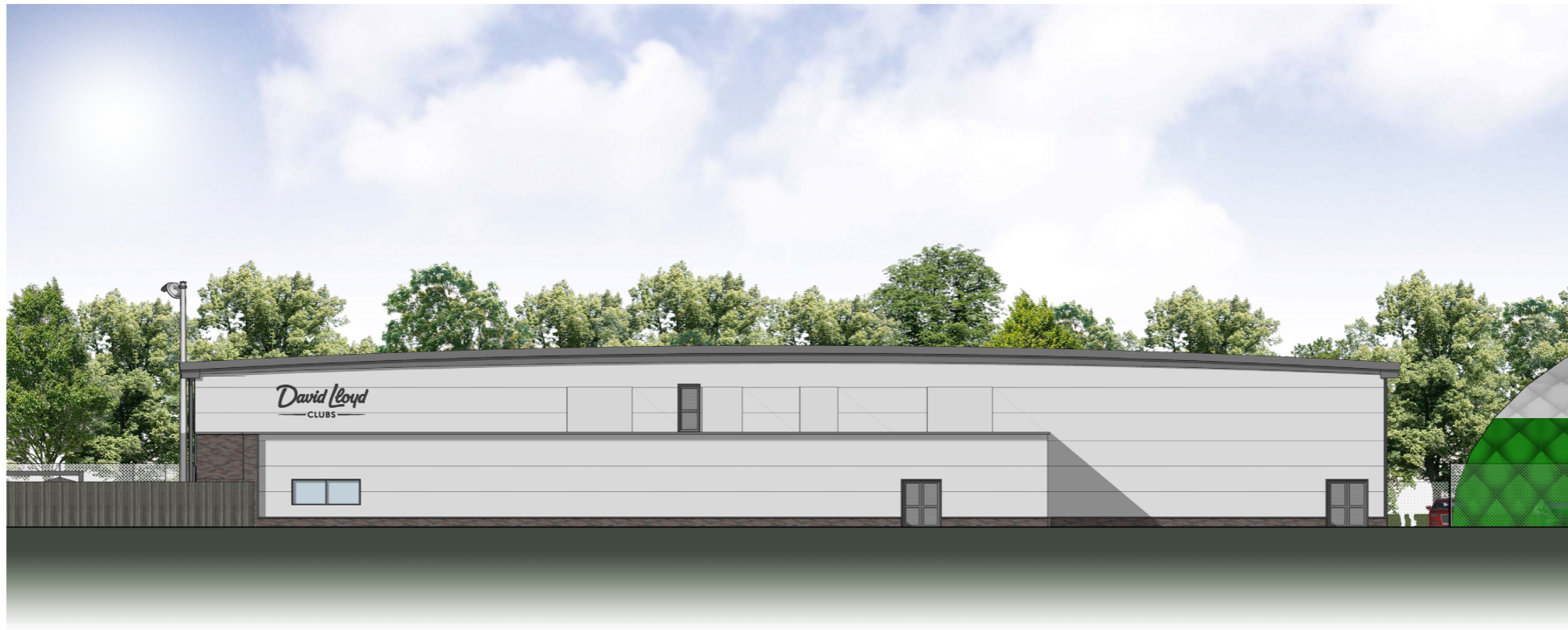
**Hadfield Cawkwell Davidson**  
 Broomgrove Lodge, 13 Broomgrove Rd, Sheffield, S10 2LZ T 0114 266 8181 www.hcd.co.uk



**ELEVATION A - NORTH WEST "FRONT" ELEVATION**



**ELEVATION B - SOUTH WEST "POOL SIDE" ELEVATION**



**ELEVATION D - SOUTH EAST "REAR" ELEVATION**



**ELEVATION D - NORTH EAST "TENNIS DOME SIDE" ELEVATION**