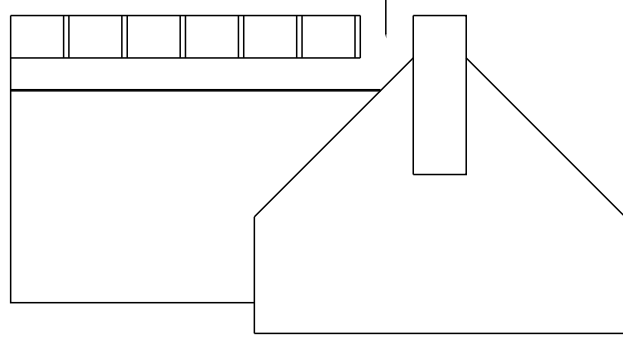


Ecogrid finished 50mm from
edging and stone infill
placed to allow for
expansion.

Ecogrid E40 with stone infill
(6-20 angular)
Ecogrid Screed Layer 40mm
(fine stone)
Terram 1000
Type 3 Reduced Fines 200mm



EF 50x150 Edging, with
150mm Concrete bed and
surround

Ecogrid E40 to be laid to
manufacturers
recommendations. Marker
infills to be used to demarc
parking bays

KEY

- +123.456 Proposed Spotlevel
- Works to David Wilson Homes
generic details
- Heavy Duty Blacktop
Circulation Areas
- Parking Spaces to be
Porous Stone with
ECOgrid E40
- Tree Pit
- 50x150 EF Edging

NOTES:

- Prior to topsoiling of rear gardens, the gardens should be reworked or rotavated to a depth of 600mm. Once this is carried out no further access to heavy plant should be allowed, and any further consolidation of subsoil should be further reworked in accordance with NHBC's requirements.
- Retaining Walls: please refer to P6776-01 Standard Retaining Wall Details & P6776-03 Standard Retaining Wall Details Showing Detached Fence
- Private Road Construction: Please refer to drawing DB-SD10-011 Driveway Construction Details

REV DESCRIPTION

REV DESCRIPTION DATE

STATUS:

Preliminary

SCALE: 1:200
DATE: May 2019
DRAWN: IDL

TITLE:

Engineering Layout
Levels and External Works
Car Park

PROJECT:

White Post Road, Bodicote

DRG. No:

957-05-13 Rev C



iD LTD
INFRASTRUCTURE DESIGN LIMITED

33 The Point
Market Harborough
Leicestershire LE16 7QU
Tel: 01858 411570 Fax: 01858 411571

DAVID WILSON HOMES
David Wilson Mercia
Remus 2
2 Cranbrook Way
Sollihull Business Park
Sollihull
B90 4GT