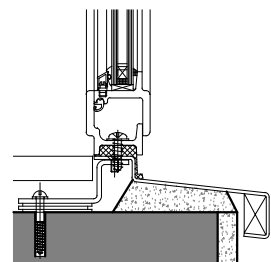
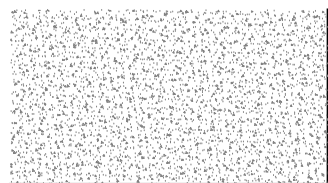


Head

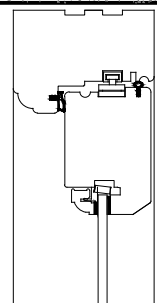


Threshold

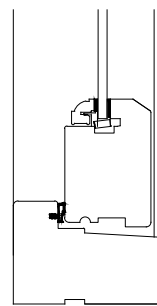
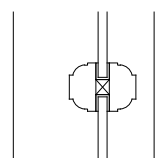
DETAIL 7 - Crittall Door/Window
1:5@A3



Head

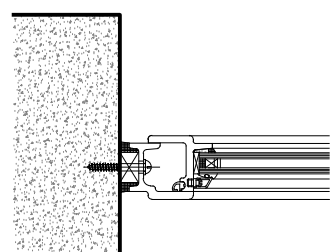


Bead Detail

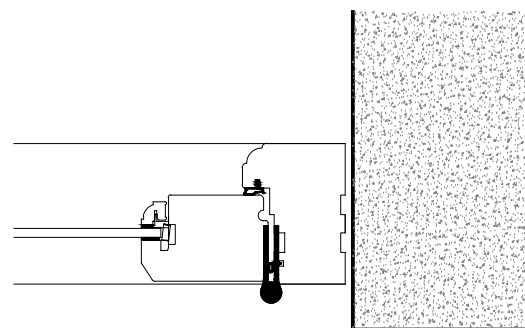


Threshold

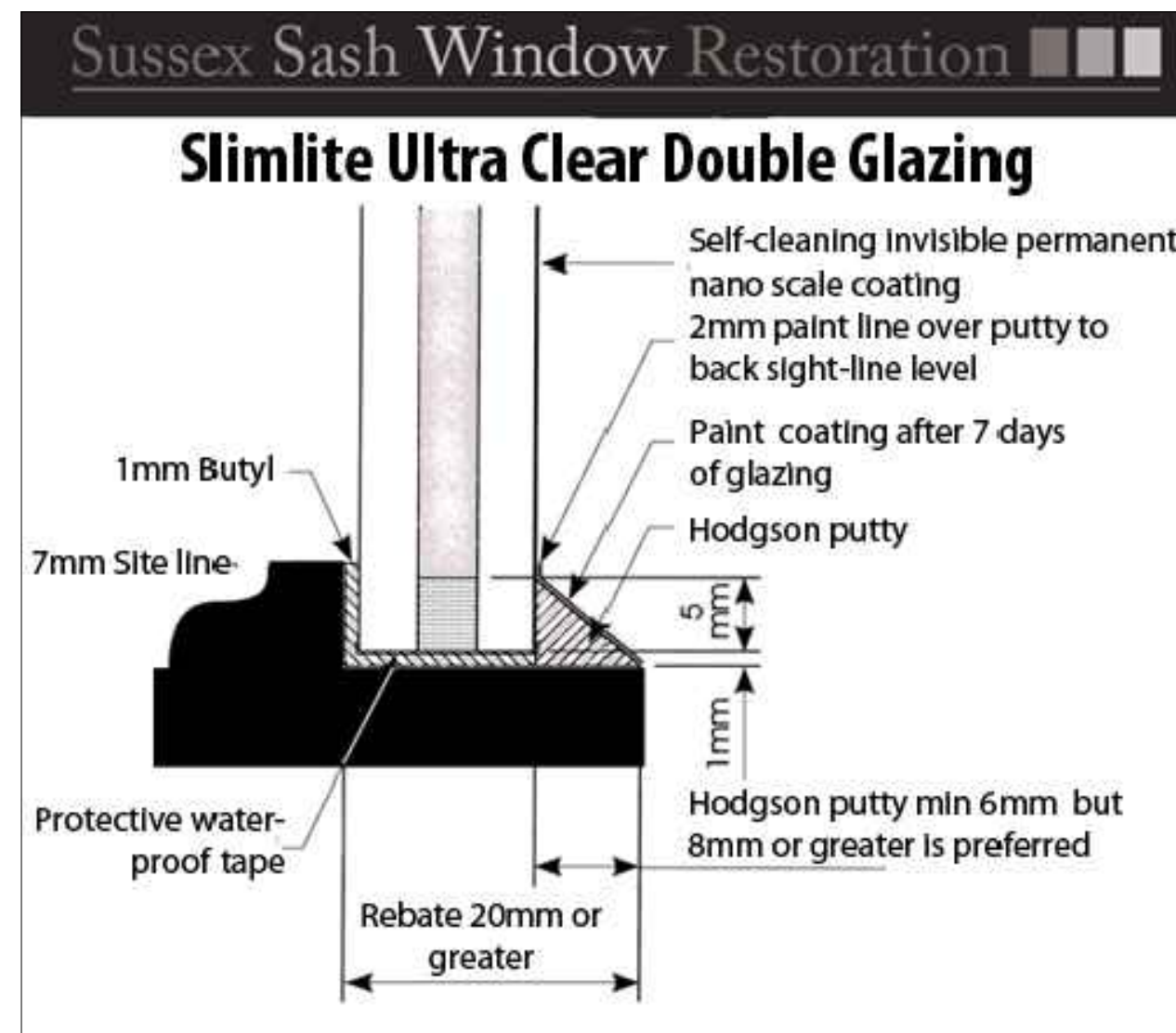
DETAIL 9 - Timber Window
1:5@A3



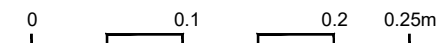
DETAIL 8 - Crittall Jamb Detail
1:5@A3



DETAIL 10 - Timber Jamb Detail
1:5@A3



DETAIL 11 - Typical Timber Slimlite Double Glazed Window Detail (NTS)
Door/Window No:
GD02, GD08, GD09, GD10, GW08, GW09, GW10, FW08, FW09



Revision	Date
A For Planning	31/07/19
B Further to Planning Meeting	15/10/19
C Notes on glazing added	14/11/19

DISCLAIMER:
No dimensions to be scaled from this drawing. All dimensions to be verified on site prior to commencement of work & all discrepancies notified. All dimensions are in millimetres, unless noted otherwise. All drawings are copyright Osborn Interiors and may not be copied, altered or reproduced without written consent.

Project:
The Old Post Office, Sibford Ferris, Oxfordshire, OX15
Drawing Title:
Window and Door Details

Scale:
1:5 @ A3
Number:
402_Rev.C