

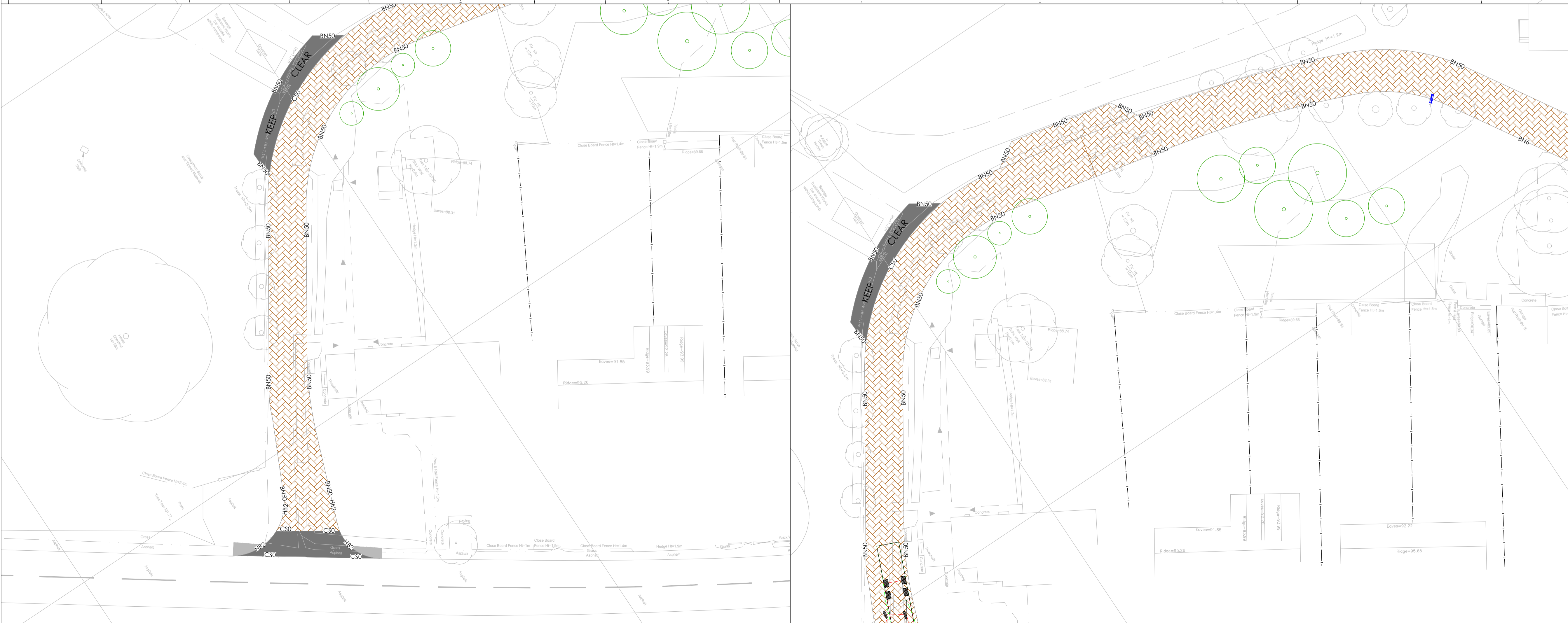
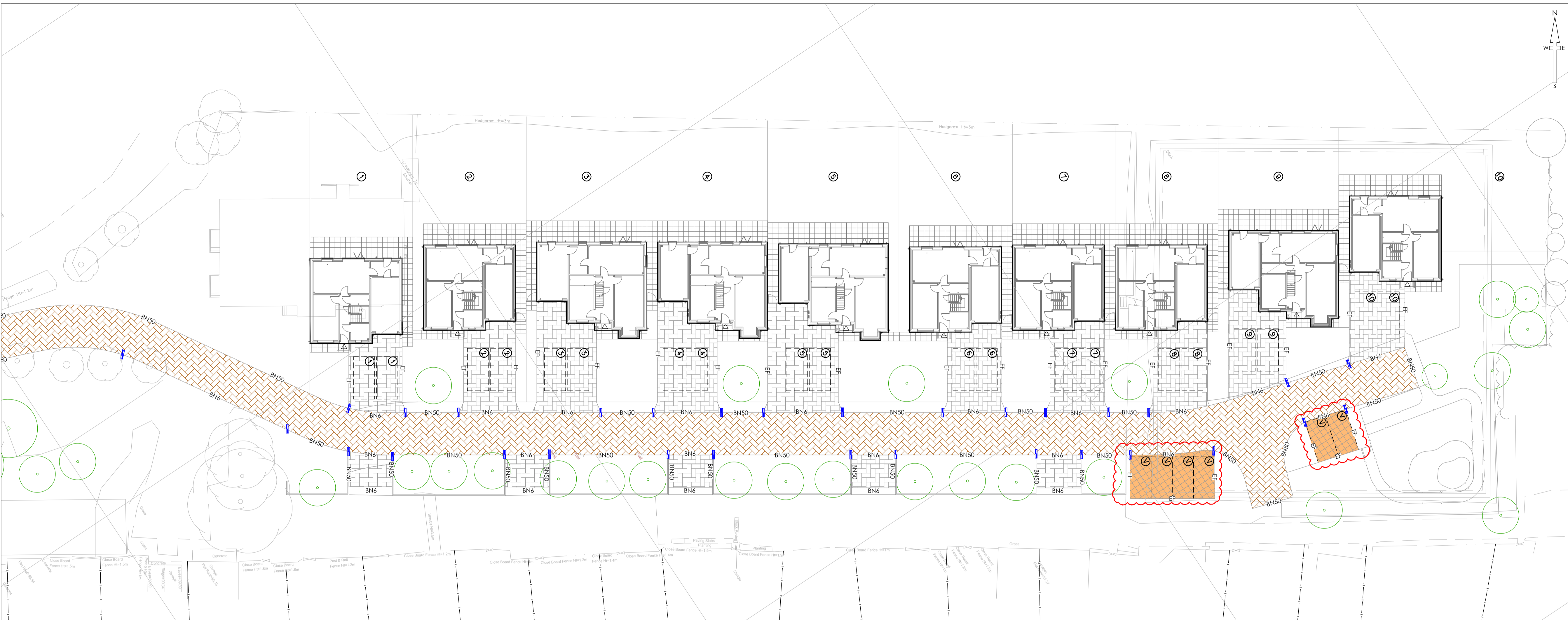
- NOTES**
- All dimensions and levels are in metres unless otherwise noted
 - This drawing is to be read in conjunction with the relevant Architect's/Engineer's drawings, specifications and CDM documentation
 - This drawings has been produced electronically and may have been photo reduced or enlarged when copied. Work to figured dimensions only (DO NOT SCALE). All dimensions to be checked on site. Any errors or omissions to be reported to the engineer immediately.
 - This drawing contains coloured lines / information that may not be clear if reproduced in black and white.
 - Digital copies of this plan can only be considered accurate if supplied directly by Infrastruct CS Ltd.

- NOTES**
- All street lights in verge to have 150mm concrete collar surround
 - Tree root barrier required to any tree within 5m of the carriageway/footway
 - Permeable paving to be laid of 45° herringbone pattern. Stretcher course should be used when pattern can't be continued. 1 No stretcher course channel either side of road
 - No doors or windows are to open onto the highway of any level.
 - No gas boxes or porches are to be located within highway land
 - All private footways to be side hung so no runoff into public highway
 - No railings or fences to be in highway or 600mm from front face of kerb

Kerb Legend

Kerb Ref	Type	Dimensions	Notes
HR2	HR2	125x255	125mm upstand
BN50	BN	125x255	50mm upstand eg shared access kerb edge
BN6	BN	125x150	6m upstand eg dropped kerbing to dwelling primary access crossover
CS0	CS2	150x150	Flush kerb laid with slight fall to channel eg Pedestrian crossings
EF	EF	50x150	Square edged path edging laid flush unless otherwise stated
		125x255/150	Dropper kerb either left or right drop as required

	Permeable Block Paving - Brown
	Permeable Block Paving - Grey
	Gravel in confinement system
	Bitmac Access to Highway Specification
	Paving slabs



P09	EPR	TST	Gravel in confinement system shown	20/09/19
P08	NJ	TST	Visitor parking bays opposite plots 8 & 9 relocated to architects proposals	11/07/19
P07	AC	TST	Surfacing amended as per latest layout	08/07/19
P06	SMN	TST	Site Boundary amended	19/06/19
P05	AC	TST	Site plan updated, minor amendment to gravel parking	15/03/19
P04	NJ	TST	Parking Area of access road relocated	13/03/19
P03	NJ	TST	Road alignment amended	20/02/19
P02	TST	NJ	Proposed Road alignment amended	08/02/19
P01	EPR	TST	Initial issue	30/01/19
REV	DRAWN	CHECK	REVISION COMMENTS	ISSUE DATE

DRAWING TITLE
Surface Finishes and Kerb Specification

SHEET NO.
1/1

PROJECT
Bunkers Hill
Kidlington
Oxon

CLIENT
Keeble Homes

Infrastruct CS Ltd

SCALE @ A1
1:250

0m 6.25m 12.5m

PROJECT NUMBER	STATUS	DATE	ENGINEER
3287	S4	January 19	TST
			DRAFT
			EPR
			APPROVED
			DJ

PROJECT	ORIGIN	PHASE	LEVEL	TYPE	ROLE	NO.	REVISION
BUNK	ICS	01	XX	DR	C	004	P09