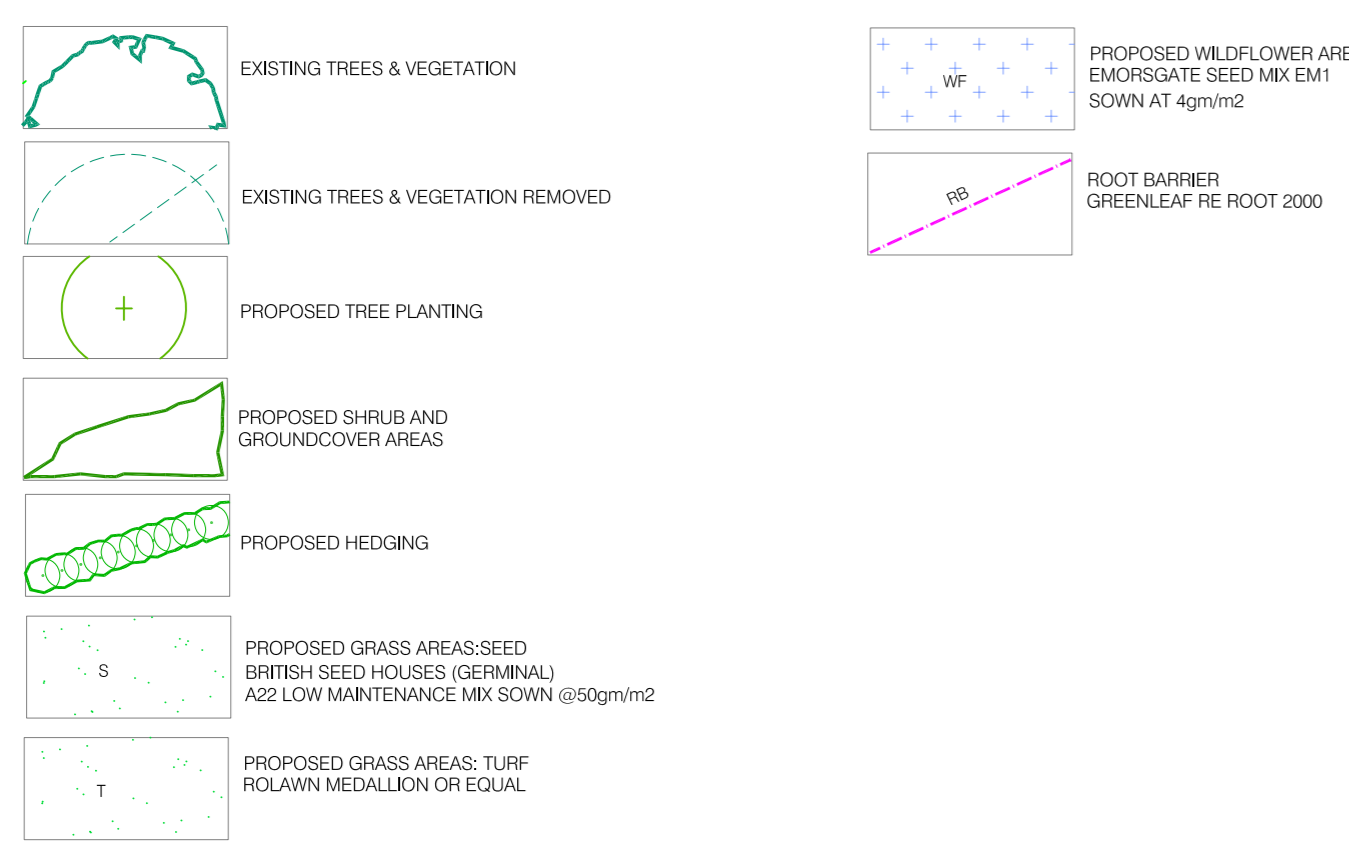
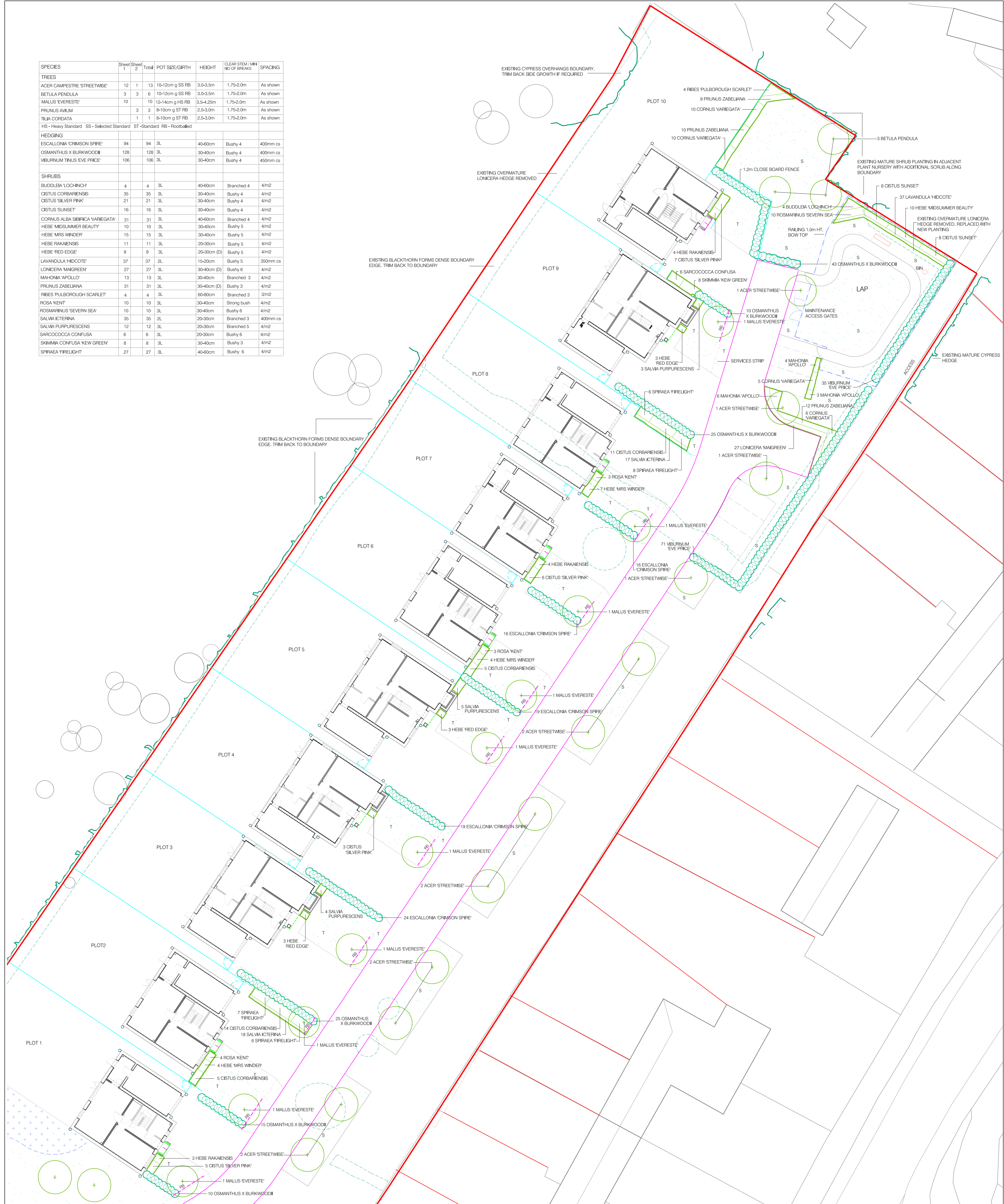


SPECIES	Sheet 1	Sheet 2	Total	POT SIZE/GIRTH	HEIGHT	CLEAR STEM / MM NO OF BREAKS	SPACING
TREES							
ACER CAMPESTRE 'STREETWISE'	12	1	13	10-12cm g SS RB	3.0-3.5m	1.75-2.0m	As shown
BETULA PENDULA	3	3	6	10-12cm g SS RB	3.0-3.5m	1.75-2.0m	As shown
MALUS 'EVERESTE'	10	10	20	12-14cm g HS RB	3.5-4.25m	1.75-2.0m	As shown
PRUNUS AVIUM	3	3	6	8-10cm g ST RB	2.5-3.0m	1.75-2.0m	As shown
TILIA CORDATA	1	1	2	8-10cm g ST RB	2.5-3.0m	1.75-2.0m	As shown
HEDGING							
ESCALLONIA 'CRIMSON SPIRE'	94	94	188	3L	40-60cm	Bushy 4	400mm cs
OSMANTHUS X BURKWOODII	128	128	256	3L	30-40cm	Bushy 4	400mm cs
VEBURNUM TINUS 'EVE PRICE'	106	106	212	3L	30-40cm	Bushy 4	450mm cs
SHRUBS							
BUDDLEIA LOCHINCH	4	4	8	3L	40-60cm	Branched 4	4/m2
CISTUS CORBARIENSIS	35	35	70	3L	30-40cm	Bushy 4	4/m2
CISTUS 'SILVER PINK'	21	21	42	3L	30-40cm	Bushy 4	4/m2
CISTUS 'SUNSET'	16	16	32	3L	30-40cm	Bushy 4	4/m2
CORNUS ALBA SIBERICA 'VAREGATA'	31	31	62	3L	40-60cm	Branched 4	4/m2
HEBE 'MIDSUMMER BEAUTY'	10	10	20	3L	30-40cm	Bushy 5	4/m2
HEBE 'MRS WINDER'	15	15	30	3L	30-40cm	Bushy 5	4/m2
HEBE 'RANKIENSIS'	11	11	22	3L	20-30cm	Bushy 5	4/m2
HEBE 'RED EDGE'	9	9	18	3L	20-30cm (D)	Bushy 5	4/m2
LAVANDULA 'HIDCOTE'	37	37	74	2L	15-20cm	Bushy 5	350mm cs
LONICERA 'MAIGREEN'	27	27	54	3L	30-40cm (D)	Bushy 6	4/m2
MAHONIA 'APOLLO'	13	13	26	3L	30-40cm	Branched 3	4/m2
PRUNUS ZABELIANA	31	31	62	3L	30-40cm (D)	Bushy 3	4/m2
RIBES 'PULBOROUGH SCARLET'	4	4	8	3L	60-80cm	Branched 3	3/m2
ROSA 'KENT'	10	10	20	3L	30-40cm	Strong bush	4/m2
ROSMARINUS 'SEVERN SEA'	10	10	20	3L	30-40cm	Bushy 6	4/m2
SALVIA 'ICTERINA'	35	35	70	3L	20-30cm	Branched 3	400mm cs
SALVIA PURPURESCENS	12	12	24	3L	20-30cm	Branched 5	4/m2
SARCOCOCCA CONFUSA	6	6	12	3L	20-30cm	Bushy 6	4/m2
SKIMMIA CONFUSA 'KEW GREEN'	8	8	16	3L	30-40cm	Bushy 3	4/m2
SPRAEA 'FIRELIGHT'	27	27	54	3L	40-60cm	Bushy 6	4/m2



NOTES

- ALL PLANT MATERIAL SHALL COMPLY WITH THE NATIONAL PLANT SPECIFICATION & BS 3093 (1992) NURSERY STOCK.
- ALL SOFT LANDSCAPE WORKS & PLANTING SHALL COMPLY WITH BS 4428 (1988) 'LANDSCAPE OPERATIONS', BS 8545 (2014) 'TREES FROM NURSERY TO INDEPENDENCE IN THE LANDSCAPE', AND THE CPSE CODE FOR HANDLING AND ESTABLISHING PLANTS.
- ALL SUBSOIL PRIOR TO RECEIVING TOPSOIL SHALL BE FREE OF COMPACTION AND SHALL BE FREE DRAINING.
- ALL TOPSOIL SHALL MEET AS A MINIMUM BS 3882 (2007) MULTI PURPOSE GRADE. EXISTING TOPSOIL CULTIVATED TO BS 3882 (2007). TOPSOIL MINIMUM DEPTHS: 350mm DEPTH IN SHRUB AREAS, 150mm DEPTH IN GRASS AREAS. SUBSOIL ONLY IN WILDFLOWER AREAS TOPSOIL GRADED TO FALL. NO CULTIVATION SHALL TAKE PLACE DURING WET OR WATERLOGGED CONDITIONS.
- TREE PIT SIZES: 1.0X1.0X0.9m DEPTH. BASE OF PIT BROKEN UP TO ENSURE FREE DRAINAGE.
- TREE PITS TO BE BACKFILLED WITH 5 PARTS TOPSOIL AND 1 PART ORGANIC COMPOST. TREES TO BE CENTRALLY PLANTED IN PITS.
- ALL TREES TO BE DOUBLE STAKED - STAKES 1800mm LONG, 75mm DIAM, 600mm ABOVE GROUND. CROSS PIECES 400X100X25mm. TREES TIED TO CROSS PIECES WITH TOMS FLAT BACKED PADS & 37mm WEBBING. WATERING AND AERATION PIPE (75mm PERFORATED PLASTIC PIPE WITH CAP) TO BE PLACED AROUND FOOTBALL AND EXTENDED TO SURFACE, CAPPED AND COVERED WITH MULCH.
- CONTAINER GROWN SHRUBS PLANTED IN PITS 300X300X300mm DEPTH. BACKFILL SHALL INCLUDE 3 LITRES OF FEAT FREE TREE AND SHRUB COMPOST. SERRABLEN SLOW RELEASE 150mm TABLETS TO BE INCORPORATED INTO TOP 20cm OF BACKFILL IN TREE AND SHRUB PITS.
- HEAVY STANDARDS - 8 TABLETS/TREE. SELECTED STANDARDS - 7 TABLETS/TREE. STANDARDS - 5 TABLETS/TREE. SHRUBS: 3L - 2 TABLETS/SHRUB. 2L - 1 TABLET/PLANT.
- ALL SHRUB AND GROUND COVER AREAS TO BE MULCHED WITH 75mm DEPTH OF ORNAMENTAL BARK MULCH (DELUXE RANGE), SOURCE: MELCOURD INDUSTRIES.
- CONTRACTOR TO CONFIRM LOCATION OF ALL UNDERGROUND SERVICES PRIOR TO UNDERTAKING LANDSCAPE WORKS. TO COMPLY WITH BRITISH STANDARDS. TREES WITH A STEM DIAMETER AT 1.2m HT. ABOVE G.L. OF 30-60cm AND >60cm (AT MATURITY) TO BE A MINIMUM OF 1.5 & 3m AWAY FROM SERVICES RESPECTIVELY. ROOT BARRIER (GREENLEAF RE-ROOT 2000) TO BE INCORPORATED WHERE TREES ARE LESS THAN SPECIFIED DISTANCE AWAY FROM SERVICES. DEPTH TO EXTEND TO A MINIMUM OF 300mm BELOW ADJACENT SERVICES.
- GRASS - TURF AND SEED AREAS: REMOVE ANY RESIDUAL RANK WEED GROWTH. CULTIVATE AND LEVEL AS REQUIRED TO REMOVE ANY STONES OR GENERAL WASTE. SOIL CULTIVATED TO A FINE TILTH PRIOR TO TURFING AND SEEDING. TURF LAID TO STRETCHER BOND & JOINTS FILLED WITH TOPSOIL. SEED AT SPECIFIED RATES.
- TREE POSITIONS: BASED UPON FOUNDATIONS THAT EXTEND DOWN INTO LIMESTONE (NON SHRINKABLE) AT BETWEEN 1.0-1.4m DEPTHS.

Rev	Date	Notes
C	20.9.19	Minor amend to tree and hedge species
B	18.9.19	LAP: 5m moved, gates adjusted
A	15.7.19	LAP adjusted

Adams Habermehl Ltd

41 The Docks, Swanage, Dorset, DT19 9LQ
Tel: 01305 370000
www.adamshabermehl.co.uk

Project: BUNKERS HILL
Client: KEBLE HOMES

Drawn By: [Name]
Checked By: [Name]
Date: 7.3.2019

PLANTING PLAN (SHEET 1)

0753 1.1

12008(A)