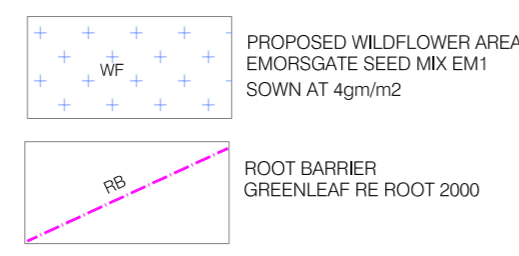
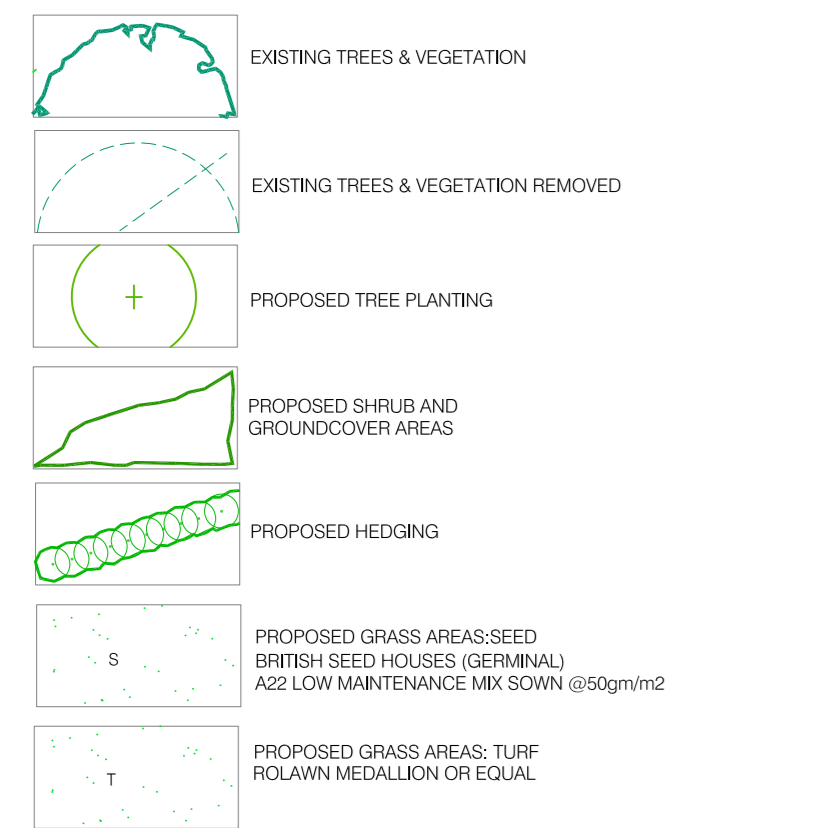
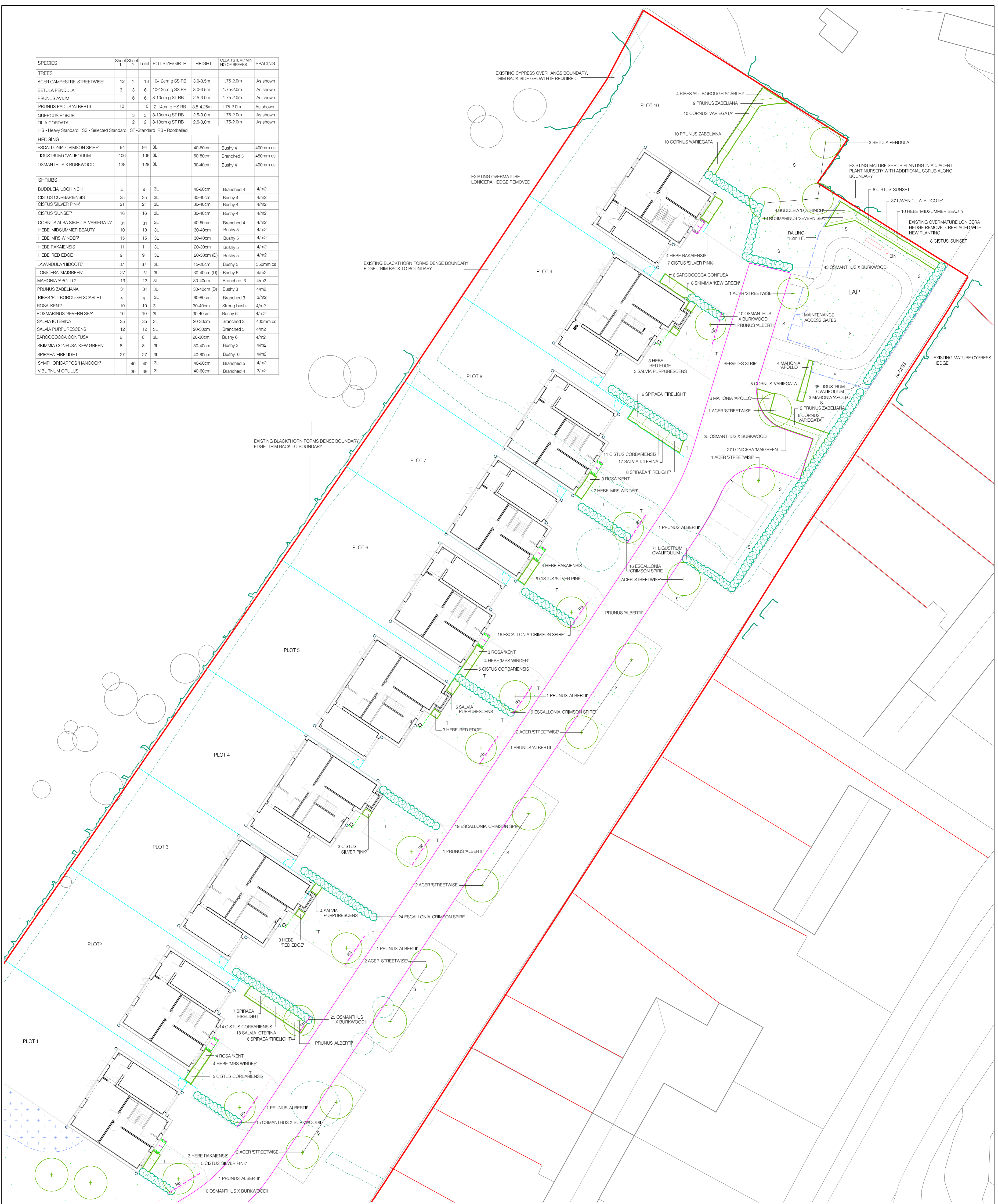


SPECIES	Sheet 1	Sheet 2	Total	POT SIZE/GIRTH	HEIGHT	CLEAR STEM / MN NO OF BREAKS	SPACING
<b>TREES</b>							
ACER CAMPESTRIS 'STREETWISE'	12	1	13	10-12cm g SS RB	3.0-3.5m	1.75-2.0m	As shown
BETULA PENDULA	3	3	6	10-12cm g SS RB	3.0-3.5m	1.75-2.0m	As shown
PRUNUS AVIUM	6	6	12	8-10cm g ST RB	2.5-3.0m	1.75-2.0m	As shown
PRUNUS PADUS 'ALBERTII'	10	10	20	12-14cm g HS RB	3.5-4.25m	1.75-2.0m	As shown
QUERCUS ROBUR	3	3	6	8-10cm g ST RB	2.5-3.0m	1.75-2.0m	As shown
TILIA CORDATA	2	2	4	8-10cm g ST RB	2.5-3.0m	1.75-2.0m	As shown
HS - Heavy Standard SS - Selected Standard ST - Standard RB - Rootballed							
<b>HEDGING</b>							
ESCALLONIA 'CRIMSON SPIRE'	94	94	188	3L	40-60cm	Bushy 4	400mm cs
LIGUSTRUM OVALIFOLIUM	106	106	212	3L	60-80cm	Branched 5	450mm cs
OSMANTHUS X BURKWOODII	128	128	256	3L	30-40cm	Bushy 4	400mm cs
<b>SHRUBS</b>							
BUDDLEIA LOCHINCH	4	4	8	3L	40-60cm	Branched 4	4/m2
CISTUS CORBARIENSIS	35	35	70	3L	30-40cm	Bushy 4	4/m2
CISTUS SILVER PINK	21	21	42	3L	30-40cm	Bushy 4	4/m2
CISTUS SUNSET	16	16	32	3L	30-40cm	Bushy 4	4/m2
CORNUS ALBA SIBIRICA 'VAREGATA'	31	31	62	3L	40-60cm	Branched 4	4/m2
HEBE 'MIDSUMMER BEAUTY'	10	10	20	3L	30-40cm	Bushy 5	4/m2
HEBE 'MRS WINDER'	15	15	30	3L	30-40cm	Bushy 5	4/m2
HEBE RAKAENSIS	11	11	22	3L	20-30cm	Bushy 5	4/m2
HEBE RED EDGE	9	9	18	3L	20-30cm (D)	Bushy 5	4/m2
LAWANDULA 'HIDCOTE'	37	37	74	2L	15-20cm	Bushy 5	350mm cs
LONGICERA 'MAIGREEN'	27	27	54	3L	30-40cm (D)	Bushy 6	4/m2
MAHONIA 'APOLLO'	13	13	26	3L	30-40cm	Branched 3	4/m2
PRUNUS ZABELIANA	31	31	62	3L	30-40cm (D)	Bushy 3	4/m2
RIBES 'PULBOROUGH SCARLET'	4	4	8	3L	60-80cm	Branched 3	3/m2
ROSA 'KENT'	10	10	20	3L	30-40cm	Strong bush	4/m2
ROSMARINUS 'SEVERN SEA'	10	10	20	3L	30-40cm	Bushy 6	4/m2
SALVIA 'ICTERINA'	35	35	70	2L	20-30cm	Branched 3	400mm cs
SALVIA PURPURESCENS	12	12	24	3L	20-30cm	Branched 5	4/m2
SARCOCOCCA CONFUSA	6	6	12	3L	20-30cm	Bushy 6	4/m2
SKIMMIA CONFUSA 'KEW GREEN'	8	8	16	3L	30-40cm	Bushy 3	4/m2
SPHRAEA 'FIRELIGHT'	27	27	54	3L	40-60cm	Bushy 6	4/m2
SYMPHORICARPOS 'HANCOCK'	40	40	80	3L	40-60cm	Branched 5	4/m2
YBURNIUM OPULUS	39	39	78	3L	40-60cm	Branched 4	3/m2



**NOTES**

- ALL PLANT MATERIAL SHALL COMPLY WITH THE NATIONAL PLANT SPECIFICATION & BS 3098 (1992) NURSERY STOCK.
- ALL SOFT LANDSCAPE WORKS & PLANTING SHALL COMPLY WITH BS 4458 (1989) LANDSCAPE OPERATIONS: BS 6546 (2014) TREES FROM NURSERY TO INDEPENDENCE IN THE LANDSCAPE: AND THE CPSE CODE FOR HANDLING AND ESTABLISHING PLANTS.
- ALL SUBSOIL PRIOR TO RECEIVING TOPSOIL SHALL BE FREE OF COMPACTION AND SHALL BE FREE DRAINING.
- ALL TOPSOIL SHALL MEET AS A MINIMUM BS 3882 (2007) MULTI PURPOSE GRADE. EXISTING TOPSOIL CULTIVATED TO BS 3882 (2007).
- TOPSOIL MINIMUM DEPTHS: 350mm DEPTH IN SHRUB AREAS; 150mm DEPTH IN GRASS AREAS; SUBSOIL ONLY IN WILDFLOWER AREAS TOPSOIL GRADED TO FALL. NO CULTIVATION SHALL TAKE PLACE DURING WET OR WATERLOGGED CONDITIONS.
- TREE PIT SIZES: 1.0x1.0x0.9m DEPTH. BASE OF PIT BROKEN UP TO ENSURE FREE DRAINAGE.
- TREE PITS TO BE BACKFILLED WITH 5 PARTS TOPSOIL AND 1 PART ORGANIC COMPOST. TREES TO BE CENTRALLY PLANTED IN PITS.
- ALL TREES TO BE DOUBLE STAKED - STAKES 1800mm LONG, 75mm DIAM, 600mm ABOVE GROUND. CROSS PIECES 400x100x25mm. TREES TIED TO CROSS PIECES WITH TOMS FLAT BACKED PADS & 37mm WEBBING.
- WATERING AND AERATION PIPE (75mm PERFORATED PLASTIC PIPE WITH CAP) TO BE PLACED AROUND ROOTBALL AND EXTENDED TO SURFACE. CAPPED AND COVERED WITH MULCH.
- CONTAINER GROWN SHRUBS PLANTED IN PITS 300x300x300mm DEPTH. BACKFILL SHALL INCLUDE 3 LITRES OF PEAT FREE TREE AND SHRUB COMPOST.
- SERRABLEN SLOW RELEASE 15gm TABLETS TO BE INCORPORATED INTO TOP 20cm OF BACKFILL IN TREE AND SHRUB PITS.
- HEAVY STANDARDS - 8 TABLETS/TREE. SELECTED STANDARDS - 7 TABLETS/TREE. STANDARDS - 5 TABLETS/TREE.
- SHRUBS: 3 - 2 TABLETS/SHRUB; 5 - 1 TABLET/PLANT.
- ALL SHRUB AND GROUND COVER AREAS TO BE MULCHED WITH 75mm DEPTH OF ORNAMENTAL BARK MULCH (DELUXE RANGE). SOURCE: MELCOURT INDUSTRIES.
- CONTRACTOR TO CONFIRM LOCATION OF ALL UNDERGROUND SERVICES PRIOR TO UNDERTAKING LANDSCAPE WORKS. TO COMPLY WITH BRITISH STANDARDS. TREES WITH A STEM DIAMETER AT 1.5m HT. ABOVE GLL OF 30-60cm AND >60cm (AT MATURITY) TO BE A MINIMUM OF 1.5 & 3m AWAY FROM SERVICES RESPECTIVELY. ROOT BARRIER (GREENLEAF RE-ROOT 2000) TO BE INCORPORATED WHERE TREES ARE LESS THAN SPECIFIED DISTANCE AWAY FROM SERVICES. DEPTH TO EXTEND TO A MINIMUM OF 300mm BELOW ADJACENT SERVICES.
- GRASS - TURF AND SEED AREAS: REMOVE ANY RESIDUAL RANK WEED GROWTH. CLIMATE AND LEVELS AS REQUIRED TO REMOVE ANY STONES OR GENERAL WASTE. SOIL CULTIVATED TO A FINE TILT PRIOR TO TURFING AND SEEDING. TURF LAD TO STRETCHER BOND & JOINTS FILLED WITH TOPSOIL. SEED AT SPECIFIED RATES.
- TREE POSITIONS: BASED UPON FOUNDATIONS THAT EXTEND DOWN INTO LIMESTONE (NON SHRINKABLE) AT BETWEEN 1.0-1.4m DEPTHS.

Rev	Date	Rev
A	15.7.19	LAP adjusted

**Adams Habermehl Ltd**  
 11 The Green, Swanton, Ontario, Canada  
 (905) 882-1111  
 www.adamshabermehl.com

Project: BUNKERS HILL  
 Client: KEBLE HOMES  
 Drawing No: PLANTING PLAN (SHEET 1)  
 Drawing Number: 0753 1.1  
 Date: 7.3.2019  
 Scale: 1:200 @ A1  
 Author: NA  
 Checker: [ ]