

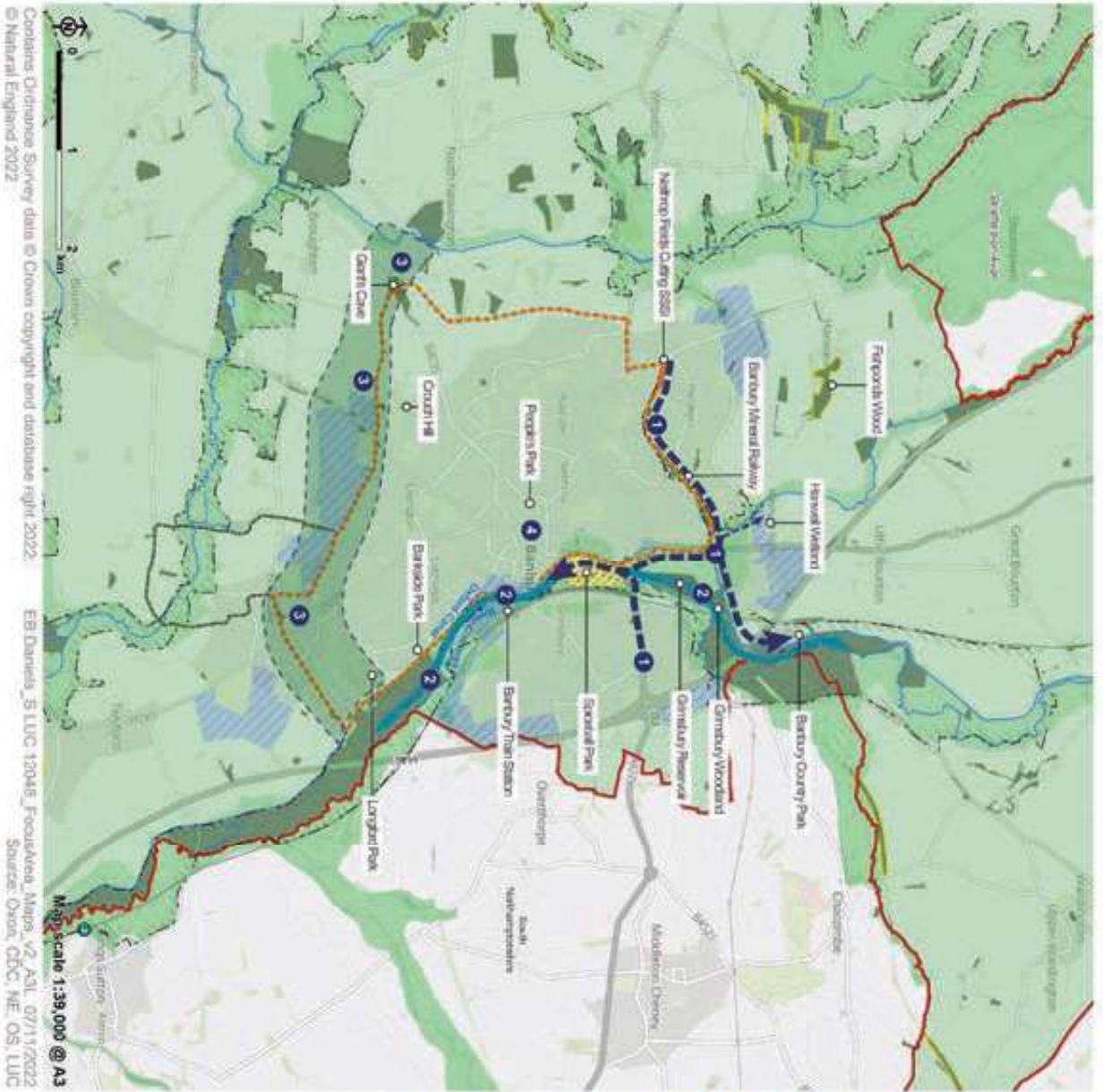
Appendix 6

Biodiversity Green Infrastructure

The Cherwell Green and Blue Infrastructure Strategy includes five ‘focus areas’ within the district. These include:

- Banbury;
- Bicester;
- Kidlington;
- Otmoor, Bernwood and Ray;
- Mid-Cherwell River Corridor.

Maps for each are presented overleaf.

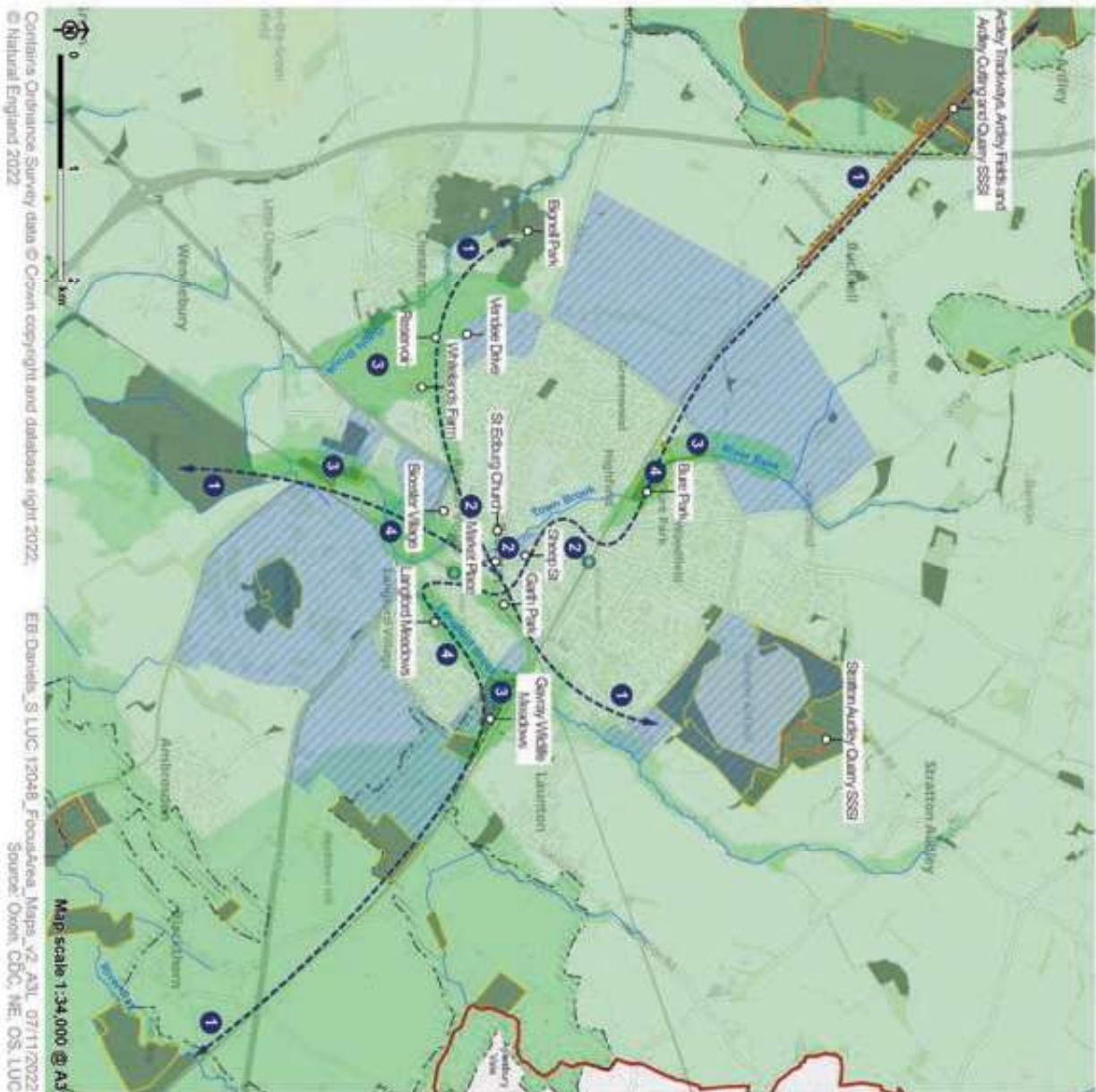


Cherwell Green and Blue Infrastructure Strategy
Cherwell District Council



Figure 1: Focus Areas Banbury

- Existing GBI**
- Cherwell District
 - Local Authority boundary
 - Conserved Strategic Development Site (inc. open space) (2015 Local Plan and 2020 Partial Review)
 - Country park
 - Nationally designated sites**
 - Locally designated sites***
 - Conservation target area
 - Barbury Circular Walk
 - Bodcote Circular Walk
 - Rivers
- Oxfordshire Nature Recovery Network**
- Core Zone
 - Recovery Zone
 - Wider Landscape Zone
- Strategic Projects for Banbury's GBI network**
- 1 Green corridor connectors
 - 2 Restoring the Cherwell River corridor
 - 3 Greening the Salt Way
 - 4 Greening the town centre
- Note:**
- ** Sites include: Special Area of Conservation and Special Protection Area
 - ** Sites include: Site of Special Scientific Interest, Ramsar and National Nature Reserve
 - *** Sites include: Local Wildlife Site and Local Nature Reserve



Contains Ordnance Survey data © Crown copyright and databases right 2022. © Natural England 2022

EB-Daniels_S LUC 12048_FocusArea_Maps_v2_A1L_07/11/2022

Map scale 1:34,000 @ A3

Source: OxoN, CDC, HE, OS, LUC

Cherwell Green and Blue Infrastructure Strategy
Cherwell District Council

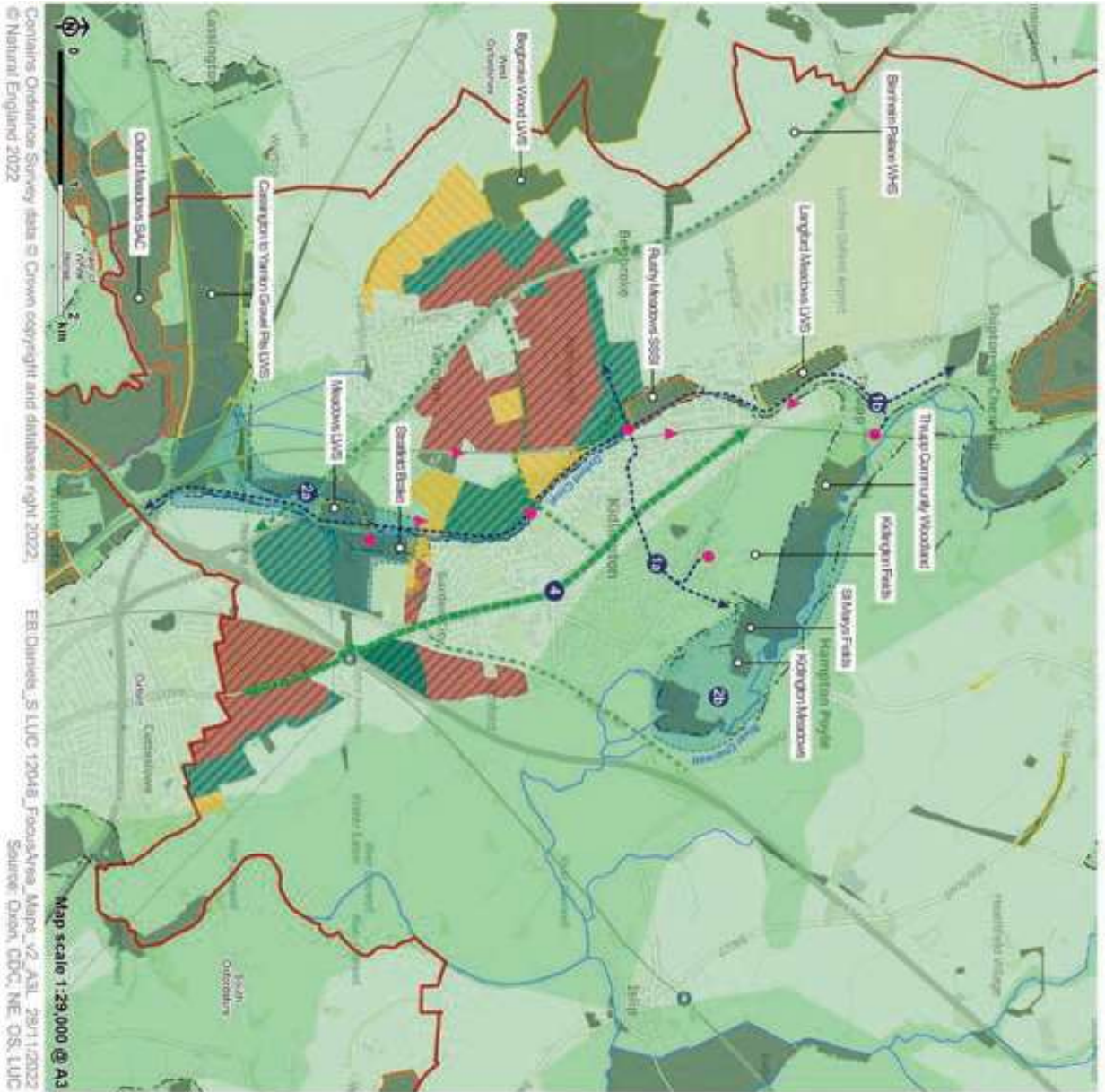
Figure 2: Focus Areas Bleesler



- Cherwell District
 - Local Authority boundary
 - Committed Strategic Development Site (inc. open space) (2015 Local Plan and 2020 Partial Review)
 - Nationally designated sites**
 - Locally designated sites***
 - Conservation target areas
 - Rivers
- Oxfordshire Nature Recovery Network**
- Core Zone
 - Recovery Zone
 - Wider Landscape Zone
- Strategic Projects for Bleesler's GBI network**
- 1 Green corridor connections
 - 2 Greening the town centre
 - 3 Green corridors
 - 4 Restoring river corridors

Note:

- ** Sites include: Special Area of Conservation and Special Protection Area
- ** Sites include: Site of Special Scientific Interest, Ramsar and National Nature Reserve
- *** Sites include: Local Wildlife Site and Local Nature Reserve



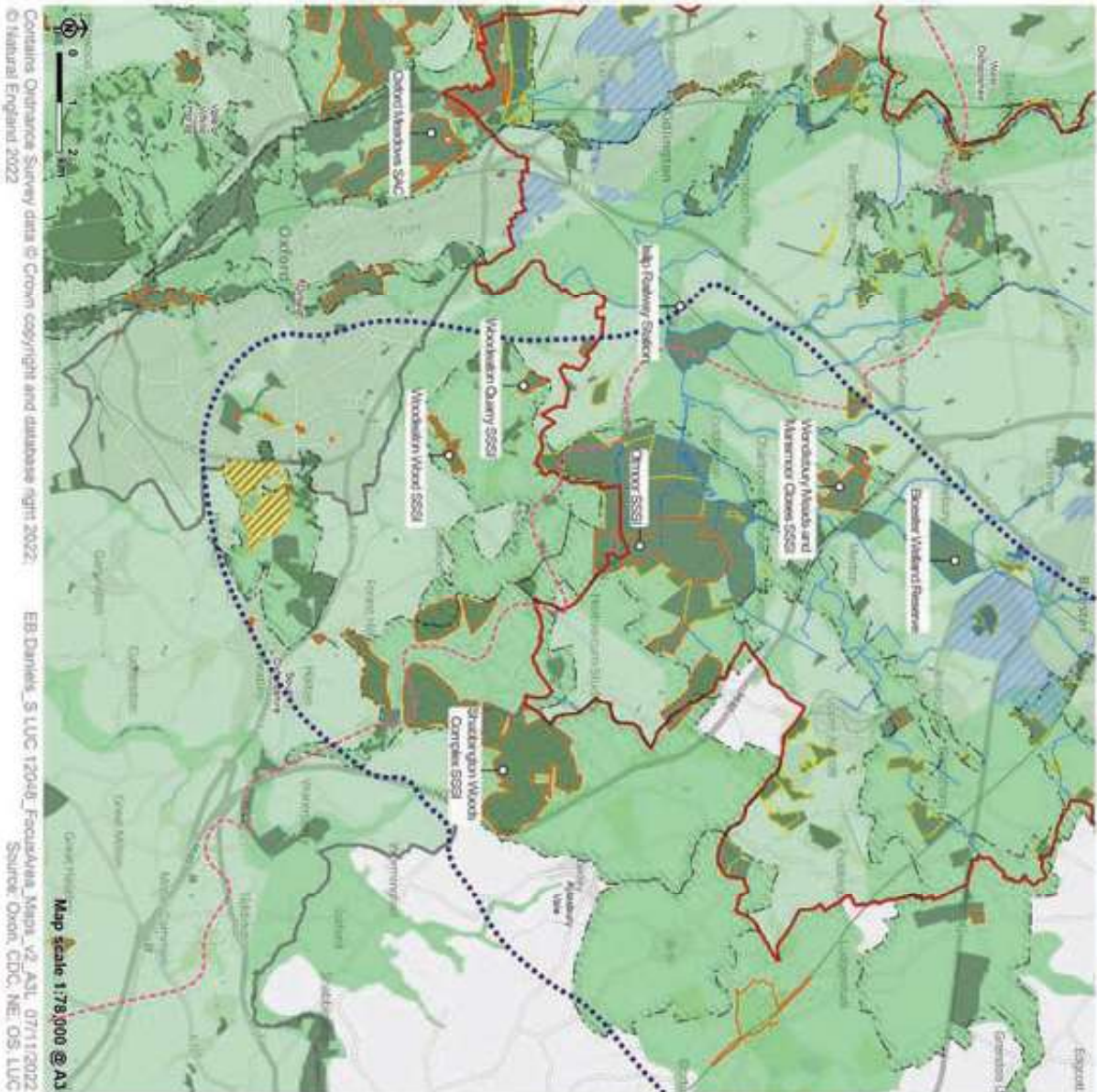
Contains Ordnance Survey data © Crown copyright and database right 2022; ERI Database, S LUC 12048, FocusArea_Mapn_V2_A3L_29/11/2022 © Natural England 2022
Map scale 1:29,000 @ A3
Source: Oxon, DDC, NE, OS, LUC

Cherwell Green and Blue Infrastructure Strategy
Cherwell District Council

Figure 4: Focus Area Kidlington



- Existing GBI**
- Cherwell District
 - Local Authority boundary
- Committed Strategic Development Site (2015 Local Plan and 2020 Partial Review)**
- Built Development
 - Public open space
 - Other open space
 - Internationally designated sites*
 - Nationally designated sites**
 - Locally designated sites***
 - Conservation target areas
- Rivers**
- Oxfordshire Nature Recovery Network:**
- Core Zone
 - Recovery Zone
 - Wider Landscape Zone
- Strategic Projects for Kidlington's GBI network**
- 1 Growing and enhancing green corridors
 - 1a Oxford Canal - Lyne Road - High Street - St Marys
 - 1b Langford Meadows - Thrupp Community/Woodland
 - 2 Enhancing wildlife and recreational connectors along blue corridors
 - 2a Steadid Brake - Oxford Meadows SAC connection
 - 2b Access along River Cherwell
 - 3 New and enhanced access to the canal and river
 - 3a Enhanced access points
 - 3b New footbridge or crossing
 - 4 Greening Kidlington village centre, improving walkability
- Note:**
- * Sites include: Special Area of Conservation and Special Protection Area
 - ** Sites include: Site of Special Scientific Interest, Ramsar and National Nature Reserve
 - *** Sites include: Local Wildlife Site and Local Nature Reserve



Coronas Ordnance Survey data © Crown copyright and database right 2022; EB Darnick, S LUC 12040_FocusArea_Map_v2_A31_07/11/2022 © Natural England 2022

Map scale 1:78,000 @ A3

Source: Oxon, CDC, NE, OS, LUC

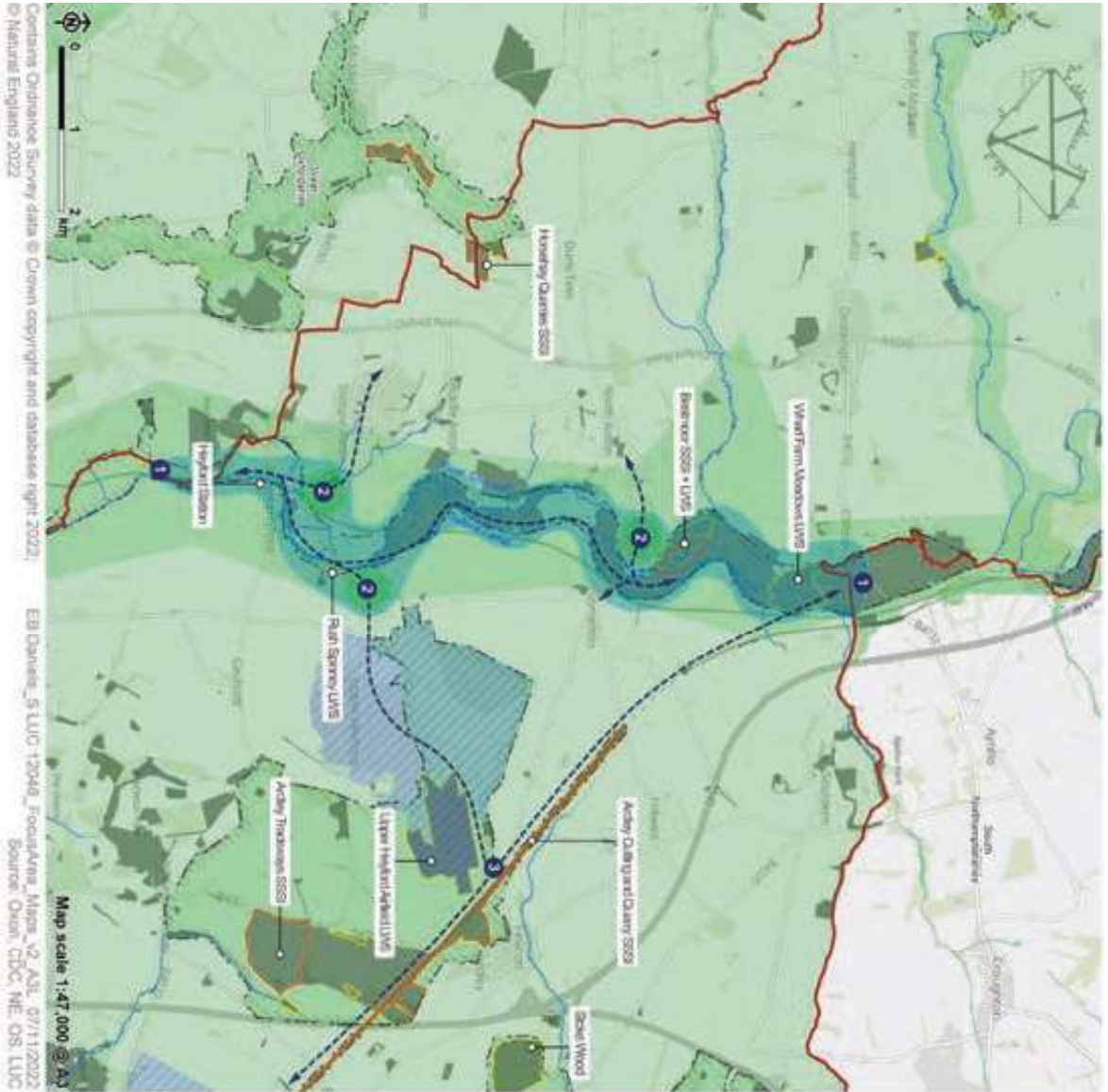
Cherwell Green and Blue Infrastructure Strategy
Cherwell District Council



- Cherwell District
 - Local Authority boundary
 - Committed Strategic Development Site (inc. open space) (2015 Local Plan and 2020 Partial Review)
 - Country park
 - Internationally designated sites* Nationally designated sites**
 - Locally designated sites***
 - Conservation target area
 - Rivers
- Oxfordshire Nature Recovery Network**
- Core Zone
 - Recovery Zone
 - Wider Landscape Zone
- BEO/WT Project area boundary
 - Oxfordshire Way

Note:

- * Sites include: Special Area of Conservation and Special Protection Area
- ** Sites include: Site of Special Scientific Interest, Ramsar and National Nature Reserve
- *** Sites include: Local Wildlife Site and Local Nature Reserve



Contractors Ordnance Survey data © Crown copyright and database right 2022; © Natural England 2022
 EB1 Datafile_S LUC 12046_FocusArea_Map_V2_A3_07/11/2022
 Source: Ordn, CDD, NE, OS, LUC
 Map scale 1:47,000 @ A3

Cherwell Green and Blue Infrastructure Strategy
 Cherwell District Council



Figure 3: Focus Area Cherwell River

- Existing GBI**
- Cherwell District
 - Local Authority boundary
 - Committed Strategic Development Site (inc. open space) (2015 Local Plan and 2020 Partial Review)
 - Nationally designated sites**
 - Locally designated sites***
 - Conservation target area
 - Rivers
- Oxfordshire Nature Recovery Network**
- Core Zone
 - Recovery Zone
 - Wider Landscape Zone
- Strategic Project for Mid-Cherwell's GBI network**
- 1 Restoring the River Cherwell and Oxford Canal
 - 2 New spaces for habitat and recreation
 - 3 Green corridor connections -----
- Note**
- * Sites include: Special Area of Conservation and Special Protection Area
 - ** Sites include: Site of Special Scientific Interest, Ramsar and National Nature Reserve
 - *** Sites include: Local Wildlife Site and Local Nature Reserve