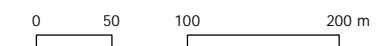


Key

- Village elements :
- Photograph locations
 - Focal Building
 - Landscape Features
 - Negative Features
 - Middle distance views
 - Visual Horizon
 - Primary vehicle routes
 - Watercourses
 - Green space provision
 - Notable individual trees
 - Notable linear woodland features / hedgerows
 - Woodland parcels
 - CDC Major Sites (10 plus) with Planning Permission
- Open Space Update 2011 :
- Allotments
 - Amenity Green Space
 - Cemeteries and Churchyards
 - Outdoor Sports Facilities
 - Provision for Children and Young People



Scale @ A3 - 1:5,000

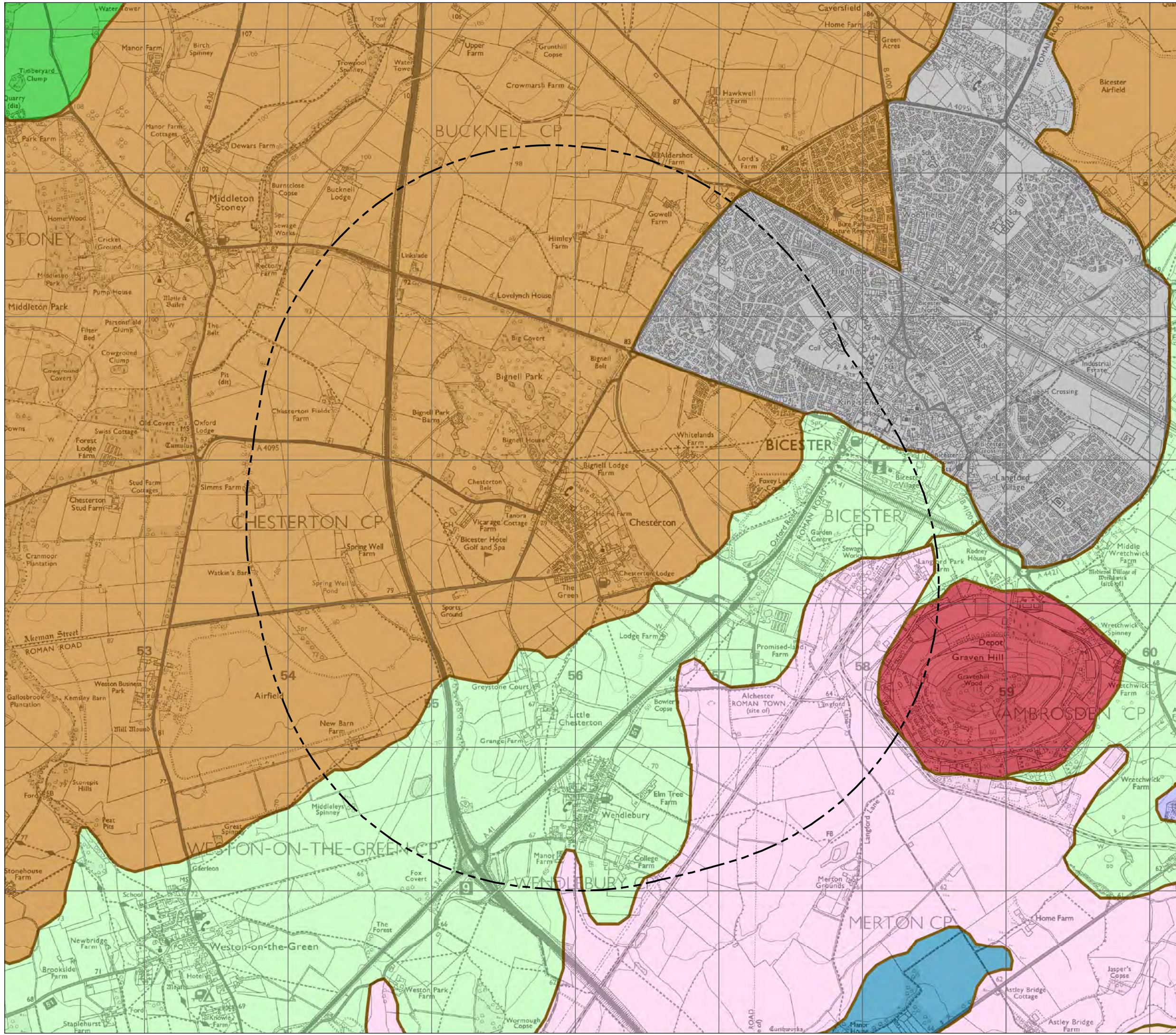


A088250-2 Figure 1C
Village Analysis.mxd

29 June 2017

5th Floor, Longcross Court, 47 Newport Road, Cardiff CF24 0AD
☎ +44 (0)29 2082 9200 ✉ cardiff@wyg.com 🌐 www.wyg.com

© Crown copyright and database rights 2017 Ordnance Survey 0100031673.
© WYG Environment Planning Transport Limited 2017. Registered in England Number: 3050297

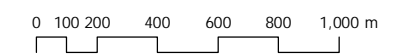


Key

2km buffer from village boundary

Oxfordshire Landscape Types :

- Alluvial Lowland
- Clay Vale
- Farmland Plateau
- Lowland Village Farmlands
- Pasture Hills
- Wooded Estatelands
- Wooded Farmland
- Wooded Hills
- Urban Areas



Scale @ A3 - 1:25,000

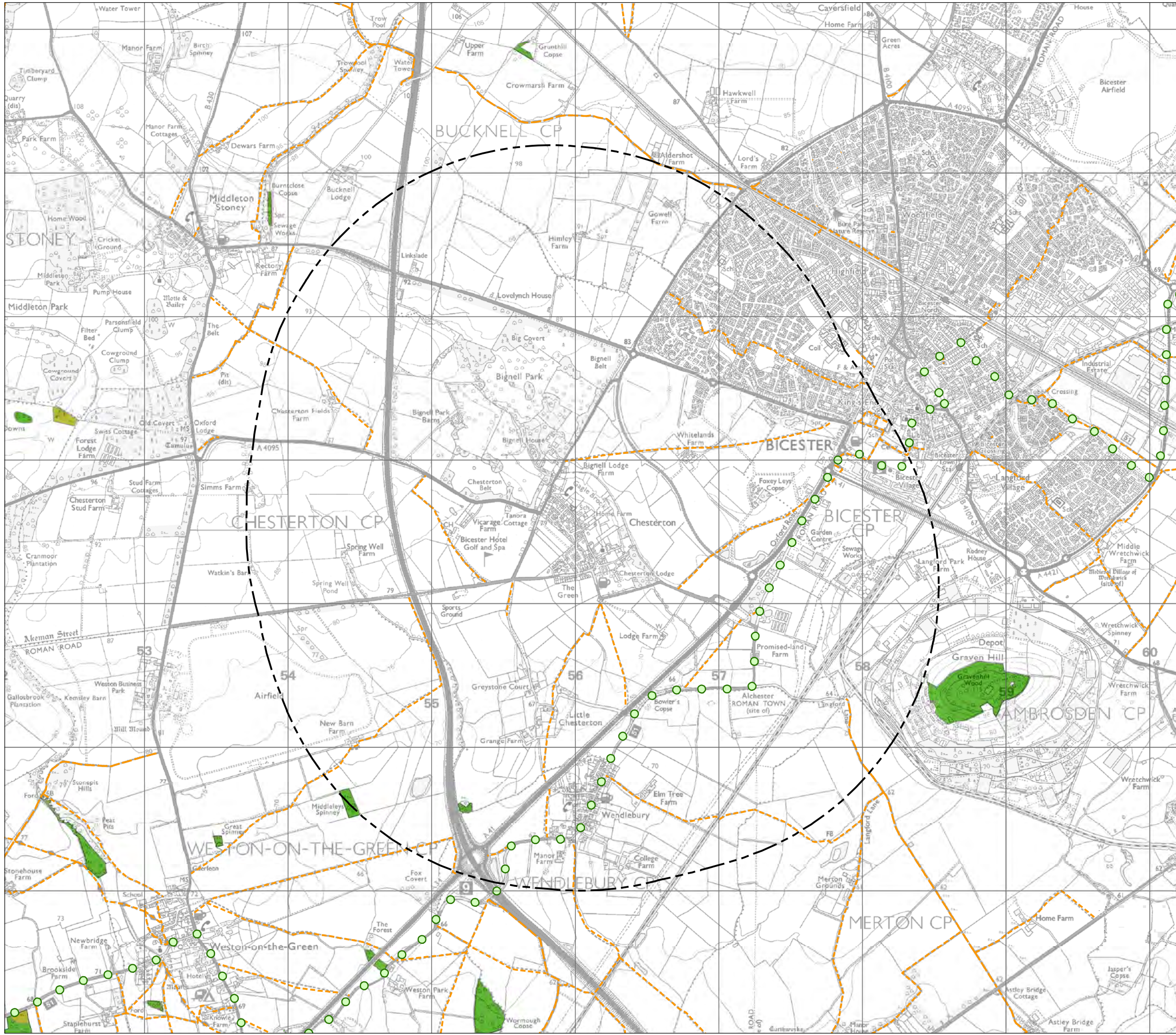
A088250-2 Figure 2 Landscape Character.mxd

24 Mar 2016

5th Floor, Longcross Court, 47 Newport Road, Cardiff CF24 0AD
☎ +44 (0)29 2082 9200 ✉ cardiff@wyg.com 🌐 www.wyg.com

© Crown copyright and database rights 2016 Ordnance Survey 0100031673.
© WYG Environment Planning Transport Limited 2016. Registered in England Number: 3050297





Cherwell DC
 CDC Local Plan
 Chesterton
 - Landscape Designations



- Key**
- 2km buffer from village boundary
 - Landscape Designations :**
 - Ancient and Semi-Natural Woodland
 - Ancient Replanted Woodland
 - Public Rights of Way :**
 - Public Footpaths
 - Public Bridleways
 - Byways Open to all Traffic
 - National Cycle Routes (NCR)

0 100 200 400 600 800 1,000 m

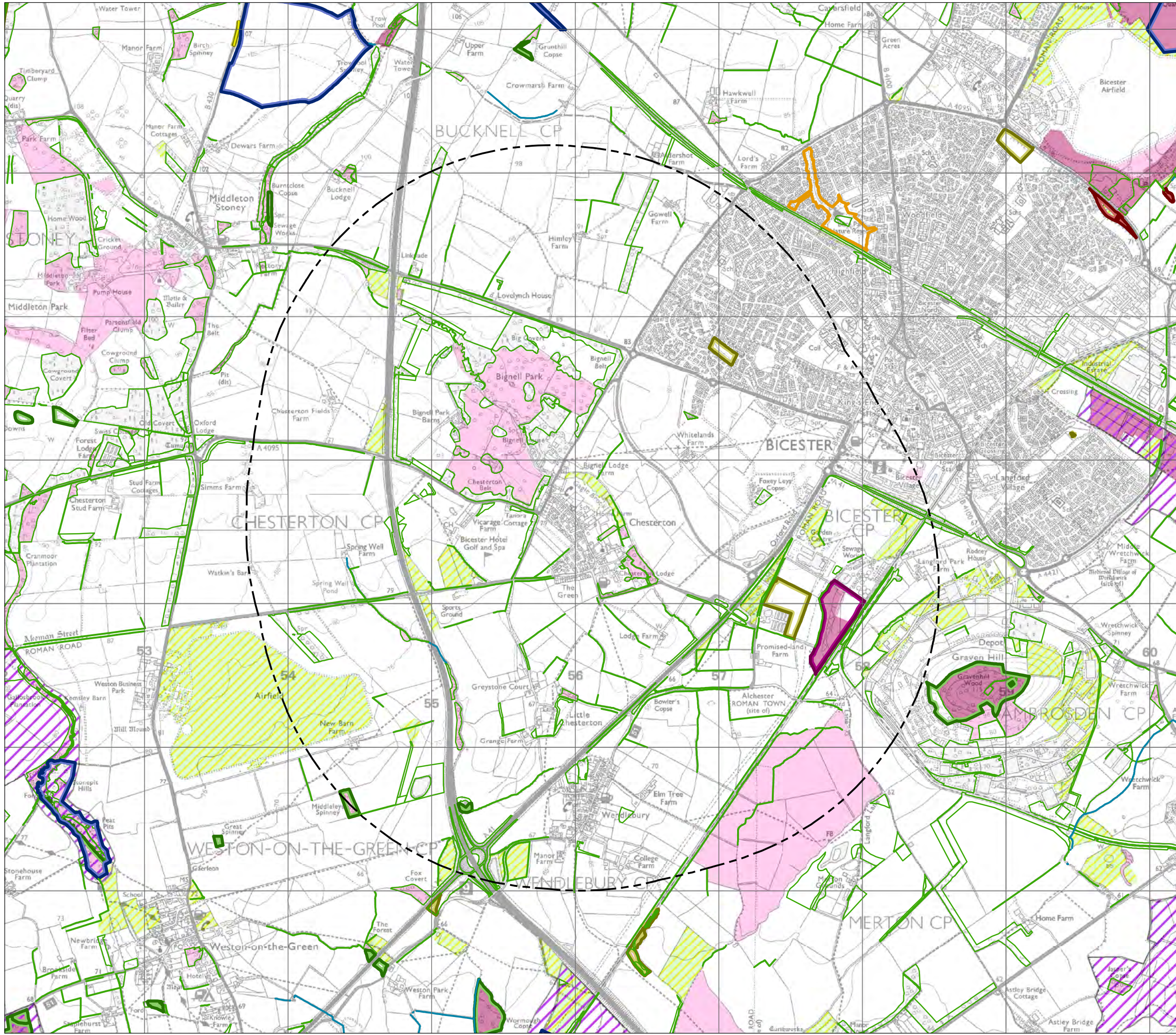
Scale @ A3 - 1:25,000

A088250-2 Figure 3B
 Landscape Designations.mxd

2 Dec 2016

5th Floor, Longcross Court, 47 Newport Road, Cardiff CF24 0AD
 ☎ +44 (0)29 2082 9200 ✉ cardiff@wyg.com 🌐 www.wyg.com

© Crown copyright and database rights 2016 Ordnance Survey 0100031673.
 © WYG Environment Planning Transport Limited 2016. Registered in England Number: 305297

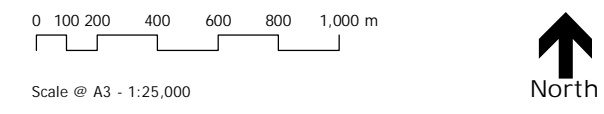


Cherwell DC
 CDC Local Plan
 Chesterton
 - Ecological Designations



8-4C

- Key**
- 2km buffer from village boundary
 - Statutory Designated Sites :**
 - Sites of Special Scientific Interest (SSSI)
 - Cherwell Local Nature Reserves
 - Non-statutory Designated Sites :**
 - Local Wildlife Sites
 - Proposed Extensions Local Wildlife Sites
 - District Wildlife Sites
 - Conservation Target Areas
 - Other Biodiversity Reserves/Sites :**
 - Banbury Ornithological Society Reserves
 - Habitat and Land Use Project Data :**
 - Road Verge Nature Reserves
 - Linear Woodland Features
 - Priority River Habitat
 - Cherwell Ancient Woodland
 - All Wooded Habitats
 - Possible NERC Act S41 Grassland Habitats
 - NERC Act S41 Habitats (Previously UKBAP)



A088250-2 Figure 4C
 Ecological Designations.mxd
 29 June 2017

5th Floor, Longcross Court, 47 Newport Road, Cardiff CF24 0AD
 ☎ +44 (0)29 2082 9200 ✉ cardiff@wyg.com 🌐 www.wyg.com

© Crown copyright and database rights 2017 Ordnance Survey 0100031673.
 © WYG Environment Planning Transport Limited 2017. Registered in England Number: 3050297



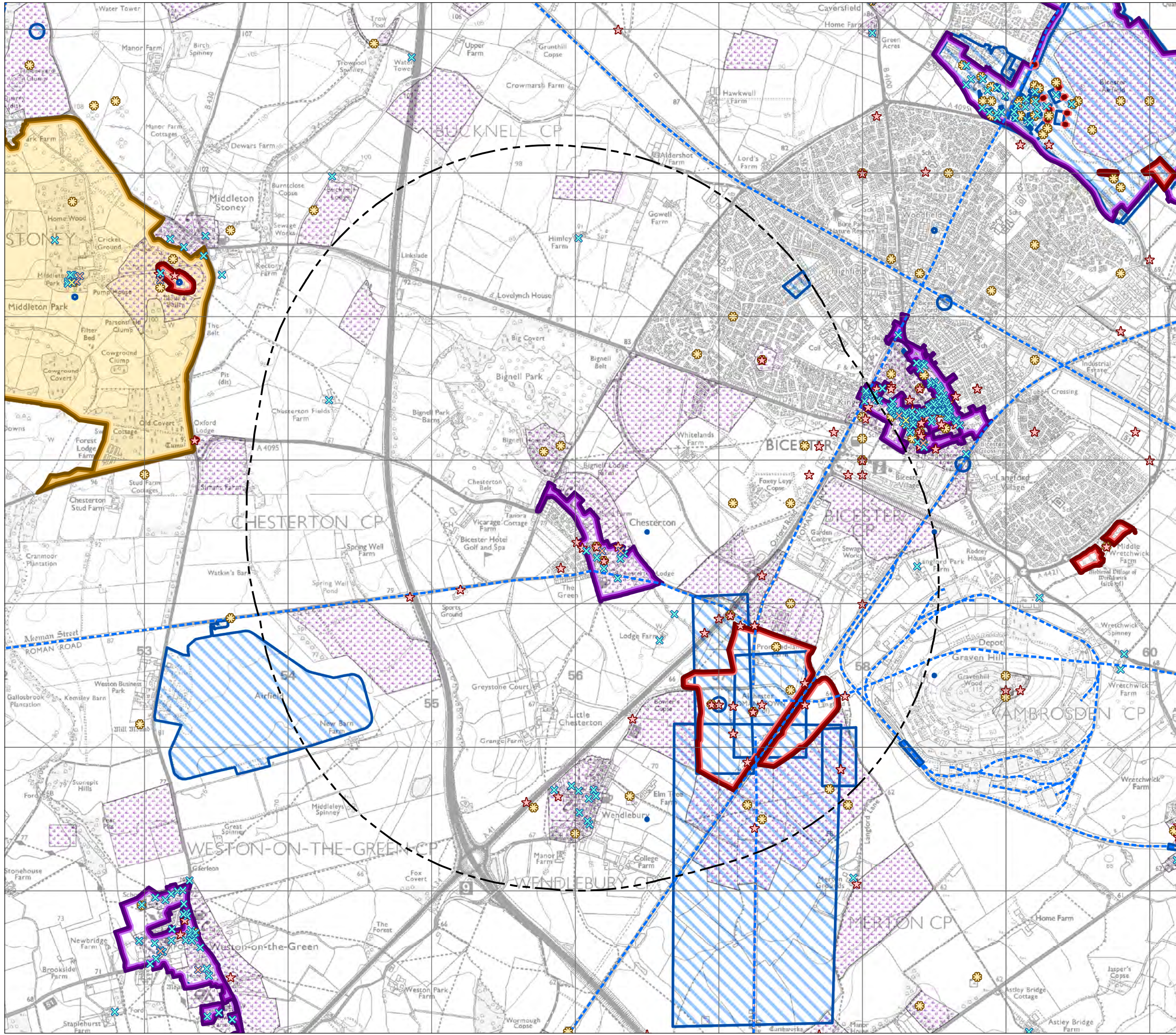
Cherwell DC

CDC Local Plan

Chesterton

8-5B

- Heritage Designations



Key

2km buffer from village boundary

Heritage Designations :

Conservation Areas

Registered Parks And Gardens

Scheduled Ancient Monuments

Archaeological Constraint Priority Areas

Listed Buildings :

Grade I

Grade II*

Grade II

National Monument Record :

NMR Events

NMR Monuments [point]

NMR Monuments [line]

NMR Monuments [area]

0 100 200 400 600 800 1,000 m

Scale @ A3 - 1:25,000

A088250-2 Figure 5B
Heritage Designations.mxd

2 Dec 2016

5th Floor, Longcross Court, 47 Newport Road, Cardiff CF24 0AD
+44 (0)29 2082 9200 cardiff@wyg.com www.wyg.com

© Crown copyright and database rights 2016 Ordnance Survey 0100031673.
© WYG Environment Planning Transport Limited 2016. Registered in England Number: 305297





Photograph 1



Photograph 2



Photograph 3



Photograph 4



Photograph 5



Photograph 6