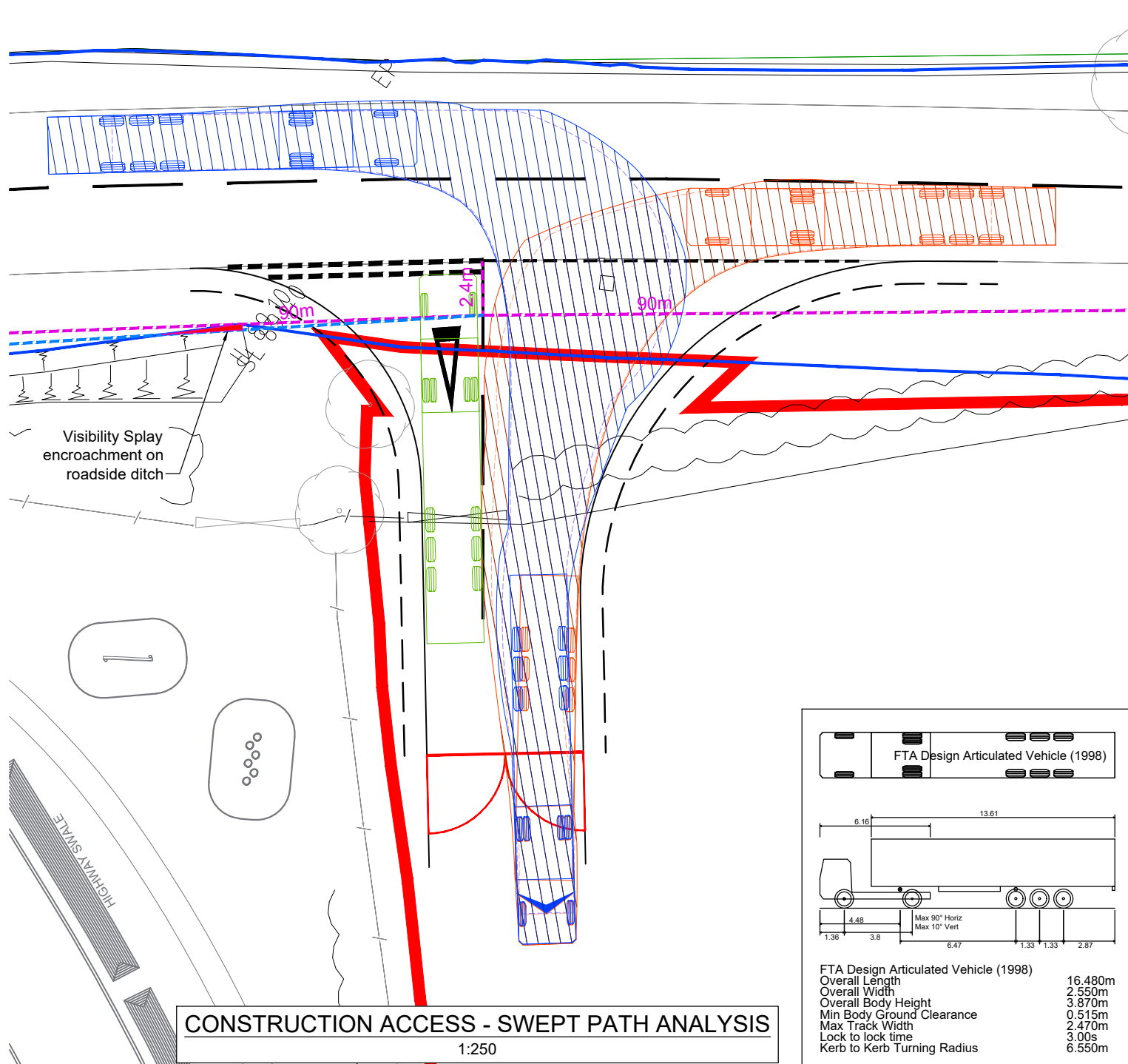
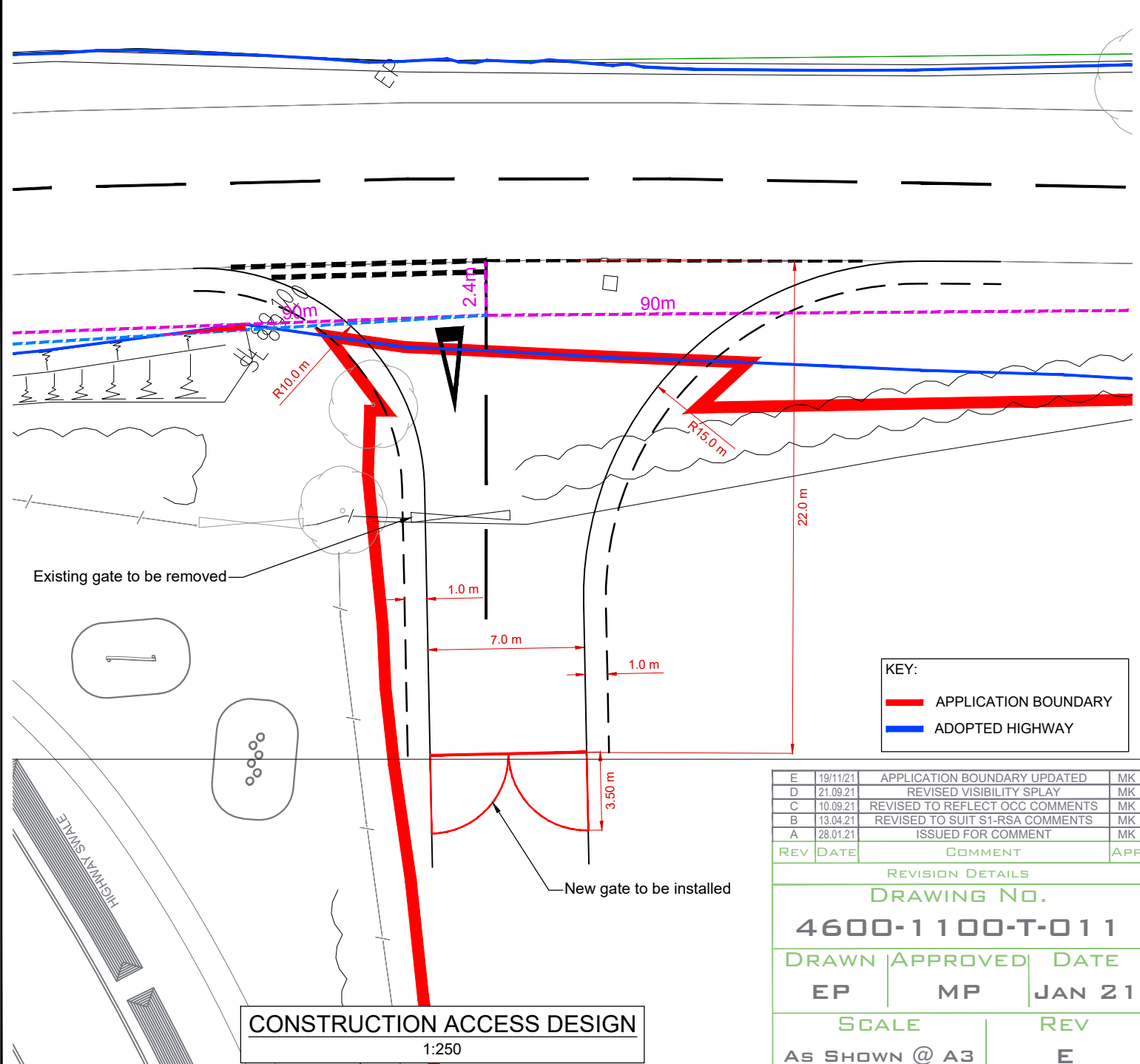


EXTENT OF 90m VISIBILITY
1:1000



FTA Design Articulated Vehicle (1998)	
Overall Length	16.480m
Overall Width	2.550m
Overall Body Height	3.870m
Min Body Ground Clearance	0.515m
Max Track Width	2.470m
Lock to lock time	3.00s
Kerb to Kerb Turning Radius	6.550m

CONSTRUCTION ACCESS - SWEEP PATH ANALYSIS
1:250



KEY:

—	APPLICATION BOUNDARY
—	ADOPTED HIGHWAY

REV	DATE	COMMENT	APP
E	19/11/21	APPLICATION BOUNDARY UPDATED	MK
D	21.09.21	REVISED VISIBILITY SPLAY	MK
C	10.09.21	REVISED TO REFLECT OCC COMMENTS	MK
B	13.04.21	REVISED TO SUIT S1-RSA COMMENTS	MK
A	28.01.21	ISSUED FOR COMMENT	MK

REVISION DETAILS		
DRAWING NO.		
4600-1100-T-011		
DRAWN	APPROVED	DATE
EP	MP	JAN 21
SCALE		REV
AS SHOWN @ A3		E

