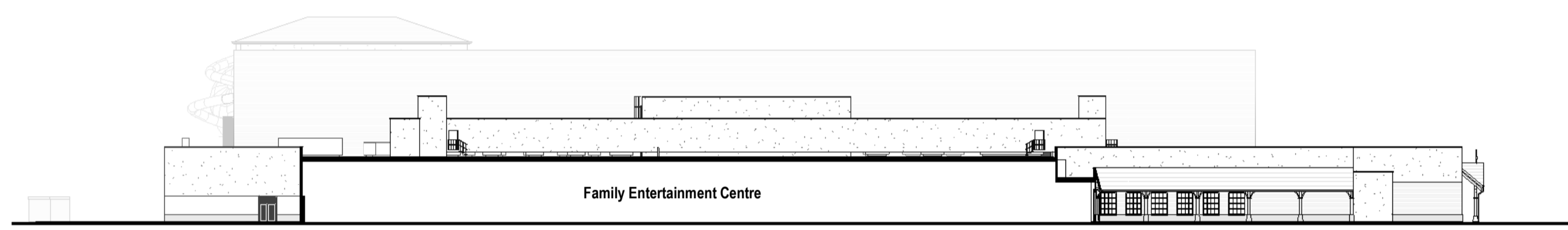




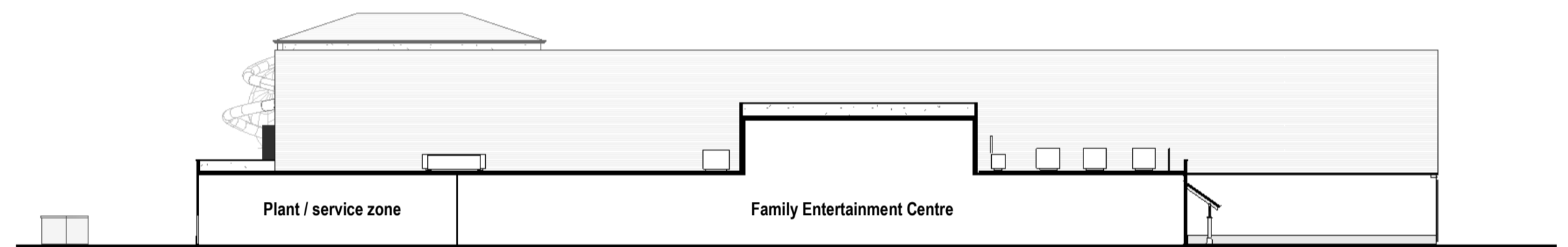
NE1 North East Elevation 1
1:500



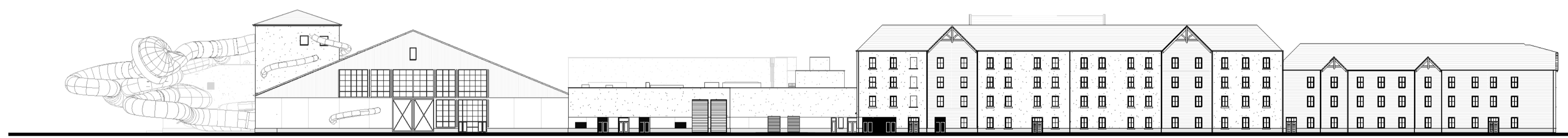
NE2 North East Elevation 2
1:500



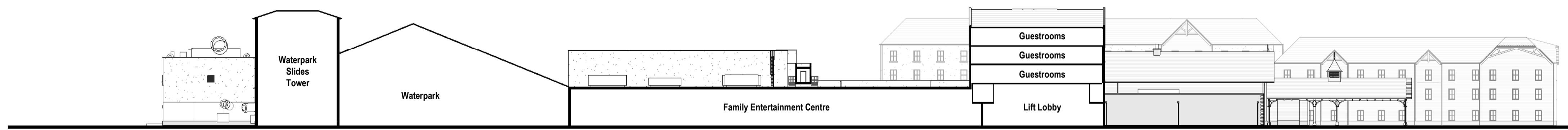
NE3 North East Elevation 3
1:500



NE4 North East Elevation 4
1:500



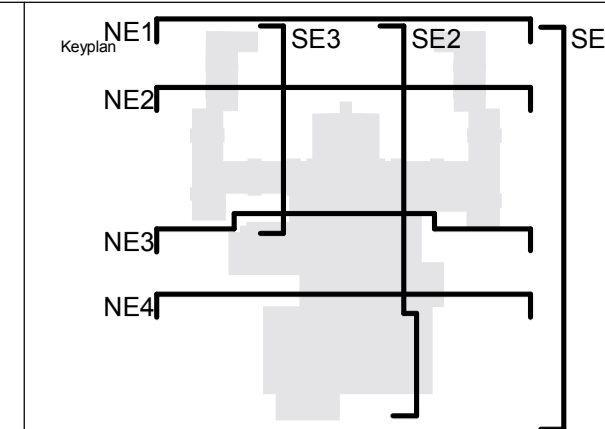
SE1 South East Elevation 1
1:500



SE2 South East Elevation 2
1:500



SE3 South East Elevation 3
1:500

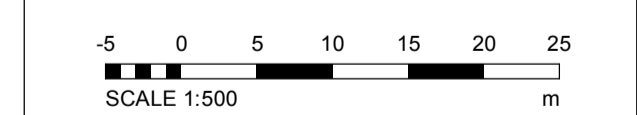


North

Notes:
1. Do not scale
2. Contractor to Check all dimensions and report omissions and errors to the Architect
3. EPR Architects accepts no liability for use of this drawing by parties other than the party for whom it was prepared or for purposes other than those for which it was prepared.
4. This drawing is issued in dwg/dgn format as an uncontrolled version to enable the recipient to prepare their own documents/drawings/models for which they are solely responsible. This drawing is based on project information current at the time of issue. EPR Architects Limited accepts no liability for any alterations or additions to or discrepancies arising out of any change to such project information that occurs to the information after it is issued by EPR Architects Limited.
5. This drawing does not contain shared coordinates and is not issued for coordination purposes.

No.	Revision	Date	Initial	Chk'd
3	P03 - Planning Issue	08.11.19	LOG	AJ
2	P02 - Preliminary Planning Issue	26.10.19	LOG	AJ
1	P01 - Preliminary Planning Issue	25.10.19	LOG	CT

Notes:
1. Stonework, render, timber cladding & roof tile patterns indicative - shown for illustrative purpose.



EPR Architects
30 Milbank, London SW1P 4DU
+44(0)20 7327800
www.epr.co.uk

Proposed Great Wolf Lodge
Chesterton, Bicester, Oxfordshire

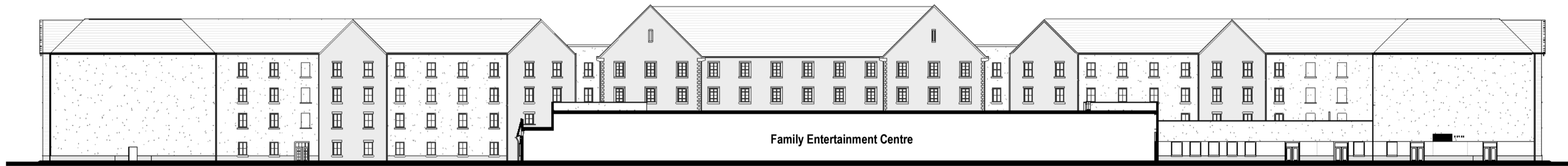
Proposed Elevations - East

Scale @A1	Status	Revision
1:500	Planning	3

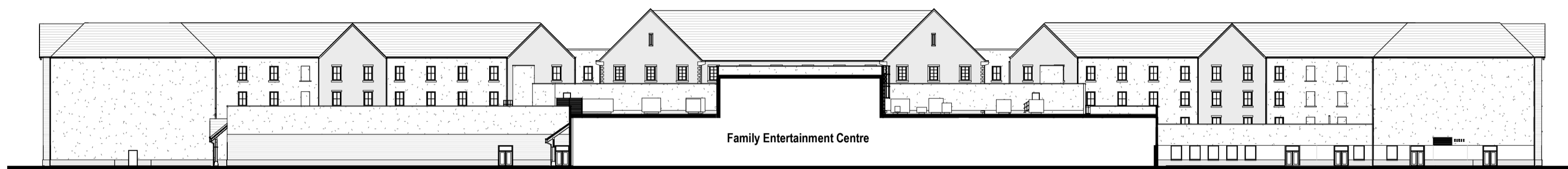
Project Code: 10875 - EPR - 00 - XX - EL - A - TP-0401



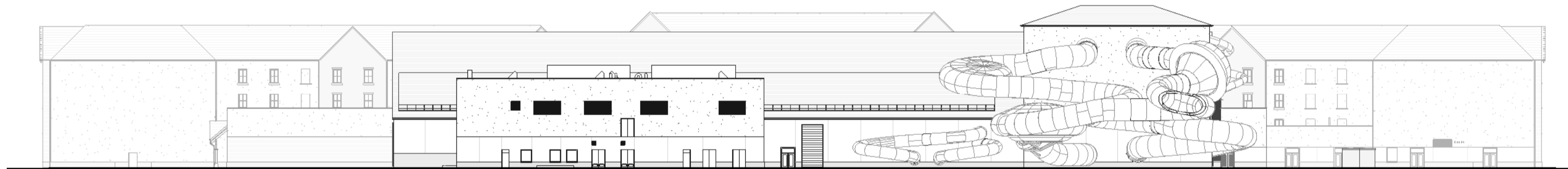
SW1 South West Elevation 1
1:500



SW2 South West Elevation 2
1:500



SW3 South West Elevation 4
1:500



SW4 South West Elevation 4
1:500



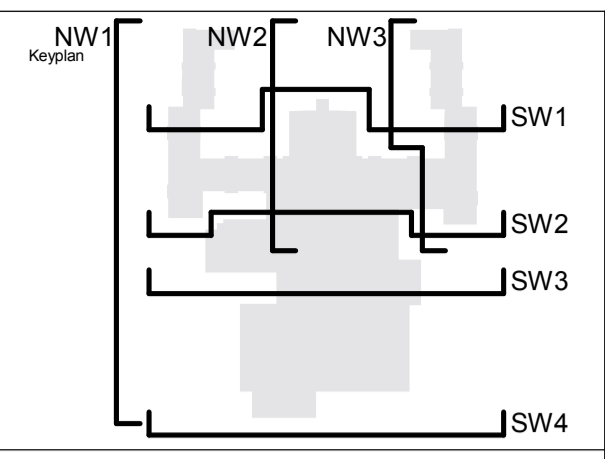
NW1 North West Elevation 1
1:500



NW2 North West Elevation 2
1:500



NW3 North West Elevation 3
1:500



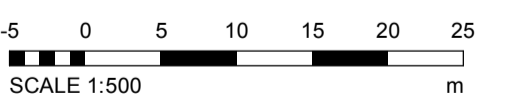
North

Notes:
1. Do not scale
2. Contractor to check all dimensions and report omissions and errors to the Architect
3. EPR Architects accepts no liability for use of this drawing by parties other than the party for whom it was prepared or for purposes other than those for which it was prepared.
4. This drawing is issued in dwg/dgn format as an uncontrolled version to enable the recipient to prepare their own documents/drawings/models for which they are solely responsible. This drawing is based on project information current at the time of issue. EPR Architects Limited accepts no liability for any alterations or additions to or discrepancies arising out of any change to such project information that occurs to the information after it is issued by EPR Architects Limited.
5. This drawing does not contain shared coordinates and is not issued for coordination purposes.

3	P03 - Planning Issue	08.11.19	LOG	AJ
2	P02 - Preliminary Planning Issue	26.10.19	LOG	AJ
1	P01 - Preliminary Planning Issue	25.10.19	LOG	CT

No.	Revision	Date	Initial	Chk'd
-----	----------	------	---------	-------

Notes:
1. Stonework, render, timber cladding & roof tile patterns indicative - shown for illustrative purpose.



EPR Architects

30 Milbank, London SW1P 4DU
+44(0)20 7327800
www.epr.co.uk

Proposed Great Wolf Lodge
Chesterton, Bicester, Oxfordshire

Proposed Elevations - West

Scale @A1 Status Revision
1:500 Planning 3

Project Code Originator Zone Level Type Role Class Number
10875 - EPR - 00 - XX - EL - A - TP-0402

0 Rev:03/19/10/15 EPR/22/24/A-CD/1/1/04_Milbank_Renovations.dwg on 14/11/19

2019-11-08 11:02:24