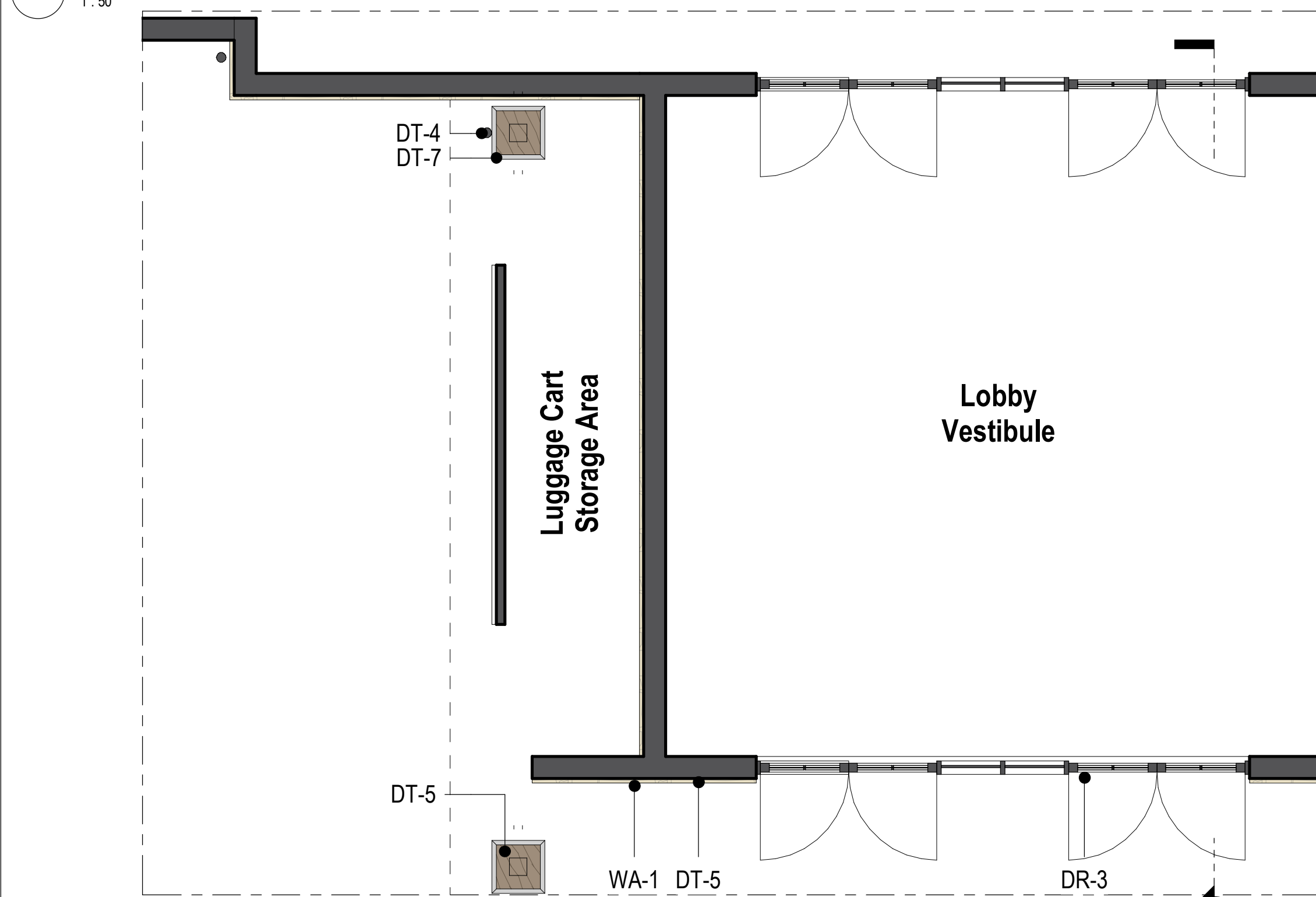




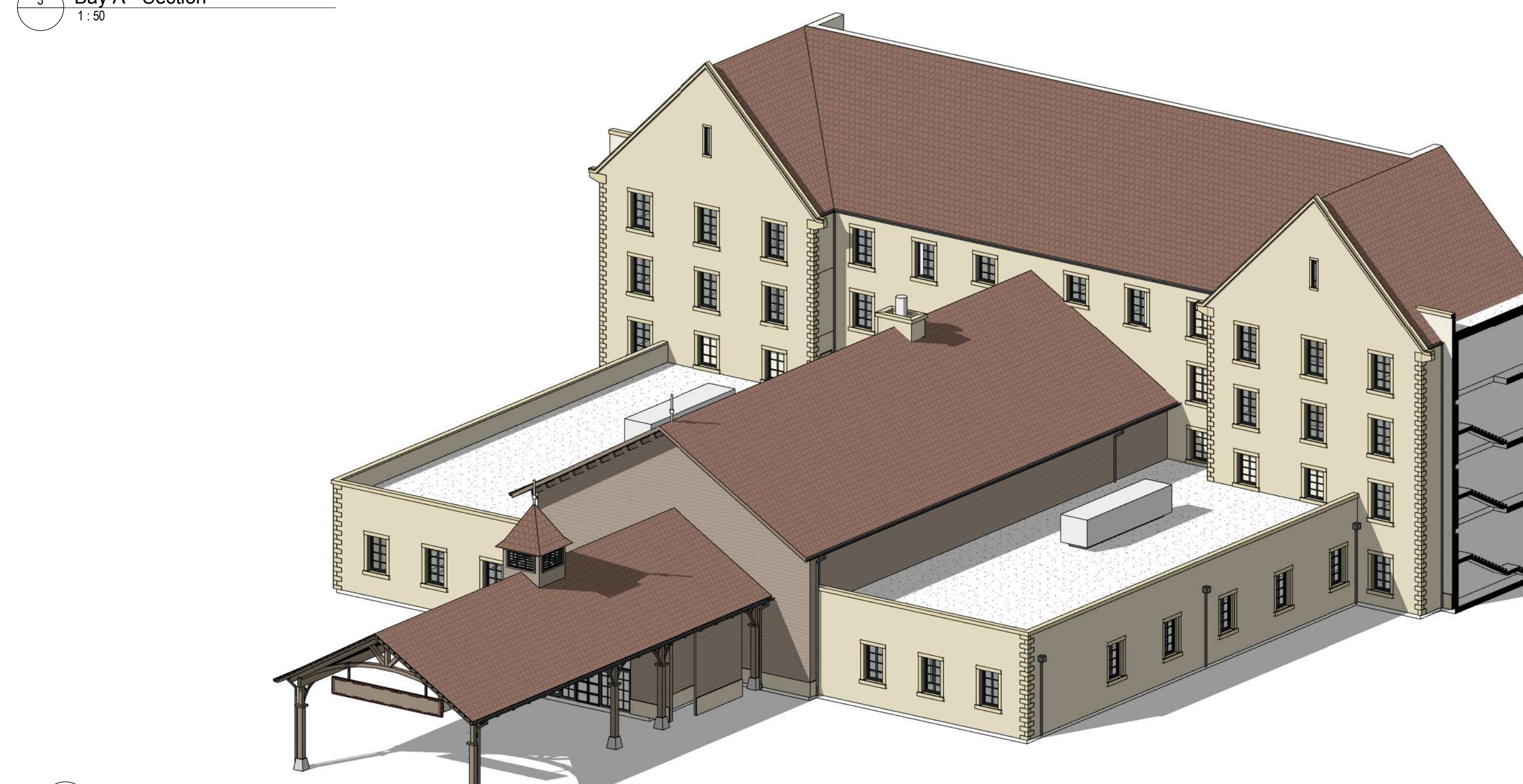
1 Bay A - Elevation
1:50



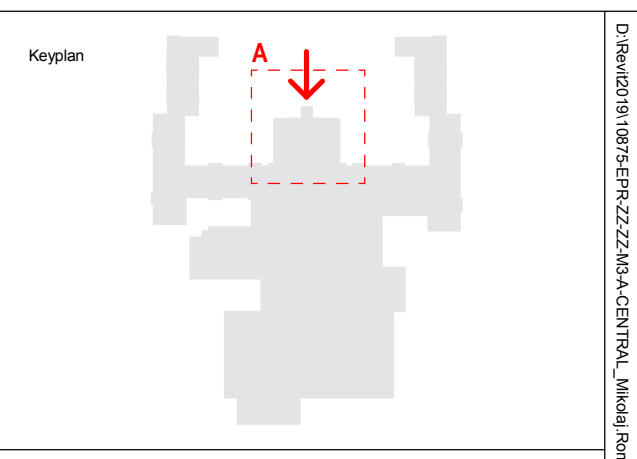
2 Bay A - Plan
1:50



3 Bay A - Section
1:50



4 Bay A - Axonometric



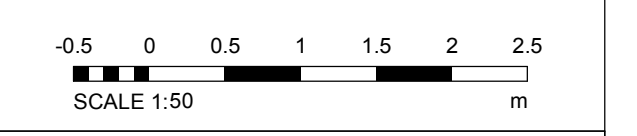
North

Notes:
 1. Do not scale
 2. Contractor to check all dimensions and report omissions and errors to the Architect
 3. EPR Architects accepts no liability for use of this drawing by parties other than the party for whom it was prepared or for purposes other than those for which it was prepared
 4. This drawing is issued in dwg/print format as an uncontrolled version to enable the recipient to prepare their own documents/drawings/models for which they are solely responsible. This drawing is based on project information current at the time of issue. EPR Architects Limited accepts no liability for any alterations or additions to or discrepancies arising out of any change to such project information that occurs to the information after it is issued by EPR Architects Limited.
 5. This drawing does not contain shared coordinates and is not issued for coordination purposes.

No.	Revision	Date	Initial	Chk'd
3	P03 - Planning Issue	08.11.19	LOG	AJ
2	P02 - Preliminary Planning Issue	26.10.19	LOG	AJ
1	P01 - Preliminary Planning Issue	25.10.19	LOG	CT

- Key:**
- WA-1- Stone
 - WA-2- Light cream render
 - WA-3- Timber cladding
 - WA-4- Green coloured metal corrugated cladding
 - WA-5- Concrete panels
 - WA-6- Engineering buff brick
- RF-1- Dark red roof tiles
 - RF-2- Dark grey roof tiles
 - RF-3- Green corrugated metal cladding
- WI-1- Dark slate grey metal window frame
 - WI-2- Cream metal window frame
 - WI-3- Light grey metal window frame
 - WI-4- Glass
- DR-1- Light grey metal door frame
 - DR-2- Grey metal barn doors - fixed
 - DR-3- Dark slate grey door frame
 - DR-4- Cream metal door frame
- DT-1- Stone facade detailing
 - DT-2- Metal coping
 - DT-3- Dark grey gutter
 - DT-4- Dark grey downpipe
 - DT-5- Timber
 - DT-6- Timber board for sign
 - DT-7- Concrete
 - DT-8- Metal decorative element
 - DT-9- Light grey metal window cill
 - DT-10- Dark slate grey metal window cill
 - DT-11- Metal louvres
 - DT-12- Timber louvres
 - DT-13- Multi-coloured water slides
 - DT-14- Roller shutter
- EQ-1-Flue
 - EQ-2- Air handling unit
 - EQ-3- PV panels

Notes:
 1. Stonework, render, timber cladding & roof tile patterns indicative - shown for illustrative purpose.



EPR Architects
 30 Milbank, London SW1P 4DU
 +44(0)20 7327800
 www.epr.co.uk

Proposed Great Wolf Lodge
 Chesterton, Bicester, Oxfordshire

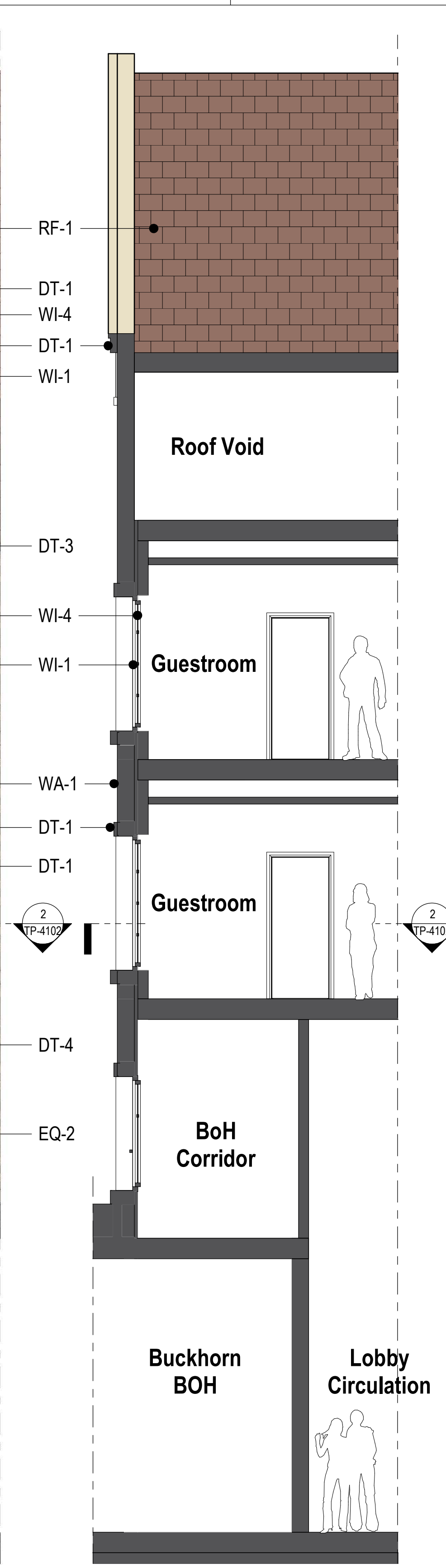
Bay A
 Proposed Typical Bay Study - Porte Cochere

Scale @A1 Status Revision
 As indicated Planning 3

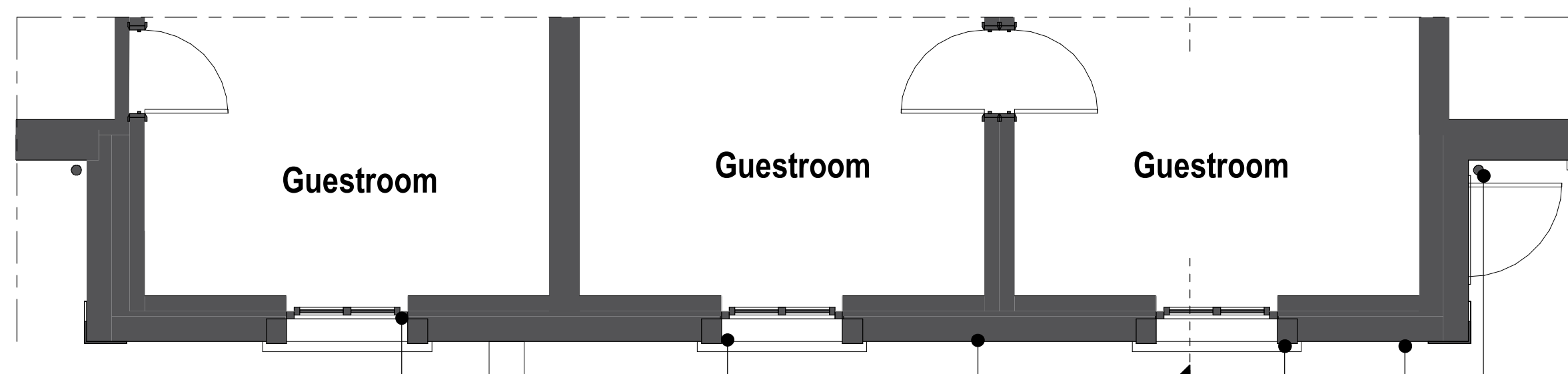
Project Code - Originator Zone Level Type Role Class Number
 10875 - EPR - 00 - XX - DR - A - TP-4101



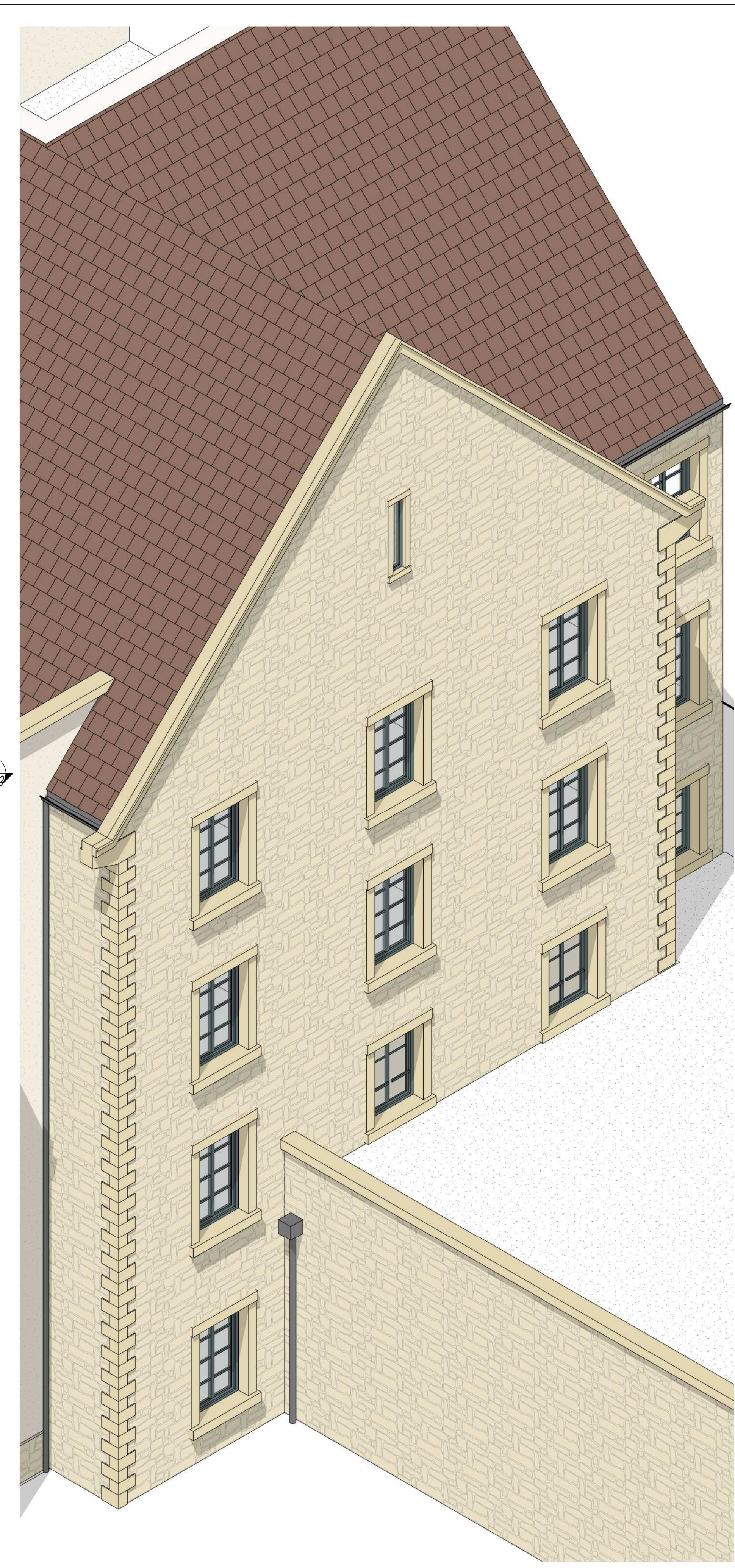
1 Bay B - Elevation
1:50



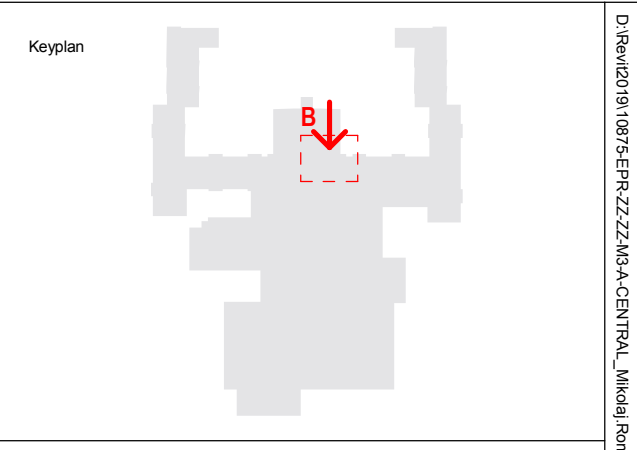
3 Bay B - Section
1:50



2 Bay B - Plan
1:50



4 Bay B - Axonometric



North

Notes:
 1. Do not scale
 2. Contractor to Check all dimensions and report omissions and errors to the Architect
 3. EPR Architects accepts no liability for use of this drawing by parties other than the party for whom it was prepared or for purposes other than those for which it was prepared.
 4. This drawing is issued in dwg/print format as an uncontrolled version to enable the recipient to prepare their own documents/drawings/models for which they are solely responsible. This drawing is based on project information current at the time of issue. EPR Architects Limited accepts no liability for any alterations or additions to or discrepancies arising out of any change to such project information that occurs to the information after it is issued by EPR Architects Limited.
 5. This drawing does not contain shared coordinates and is not issued for coordination purposes.

No.	Revision	Date	Initial	Chk'd
3	P03 - Planning Issue	08.11.19	LOG	AJ
2	P02 - Preliminary Planning Issue	20.10.19	LOG	AJ
1	P01 - Preliminary Planning Issue	25.10.19	LOG	CT

- Key:**
- WA-1 - Stone
 - WA-2 - Light cream render
 - WA-3 - Timber cladding
 - WA-4 - Green coloured metal corrugated cladding
 - WA-5 - Concrete panels
 - WA-6 - Engineering buff brick

- RF-1 - Dark red roof tiles
- RF-2 - Dark grey roof tiles
- RF-3 - Green corrugated metal cladding

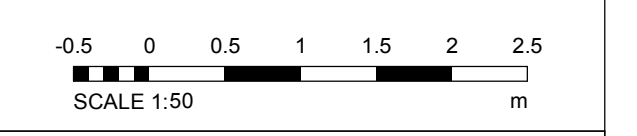
- WI-1 - Dark slate grey metal window frame
- WI-2 - Cream metal window frame
- WI-3 - Light grey metal window frame
- WI-4 - Glass

- DR-1 - Light grey metal door frame
- DR-2 - Grey metal barn doors - fixed
- DR-3 - Dark slate grey door frame
- DR-4 - Cream metal door frame

- DT-1 - Stone facade detailing
- DT-2 - Metal coping
- DT-3 - Dark grey gutter
- DT-4 - Dark grey downpipe
- DT-5 - Timber
- DT-6 - Timber board for sign
- DT-7 - Concrete
- DT-8 - Metal decorative element
- DT-9 - Light grey metal window cill
- DT-10 - Dark slate grey metal window cill
- DT-11 - Metal louvres
- DT-12 - Timber louvres
- DT-13 - Multi-coloured water slides
- DT-14 - Roller shutter

- EQ-1 - Flue
- EQ-2 - Air handling unit
- EQ-3 - PV panels

Notes:
 1. Stonework, render, timber cladding & roof tile patterns indicative - shown for illustrative purpose.



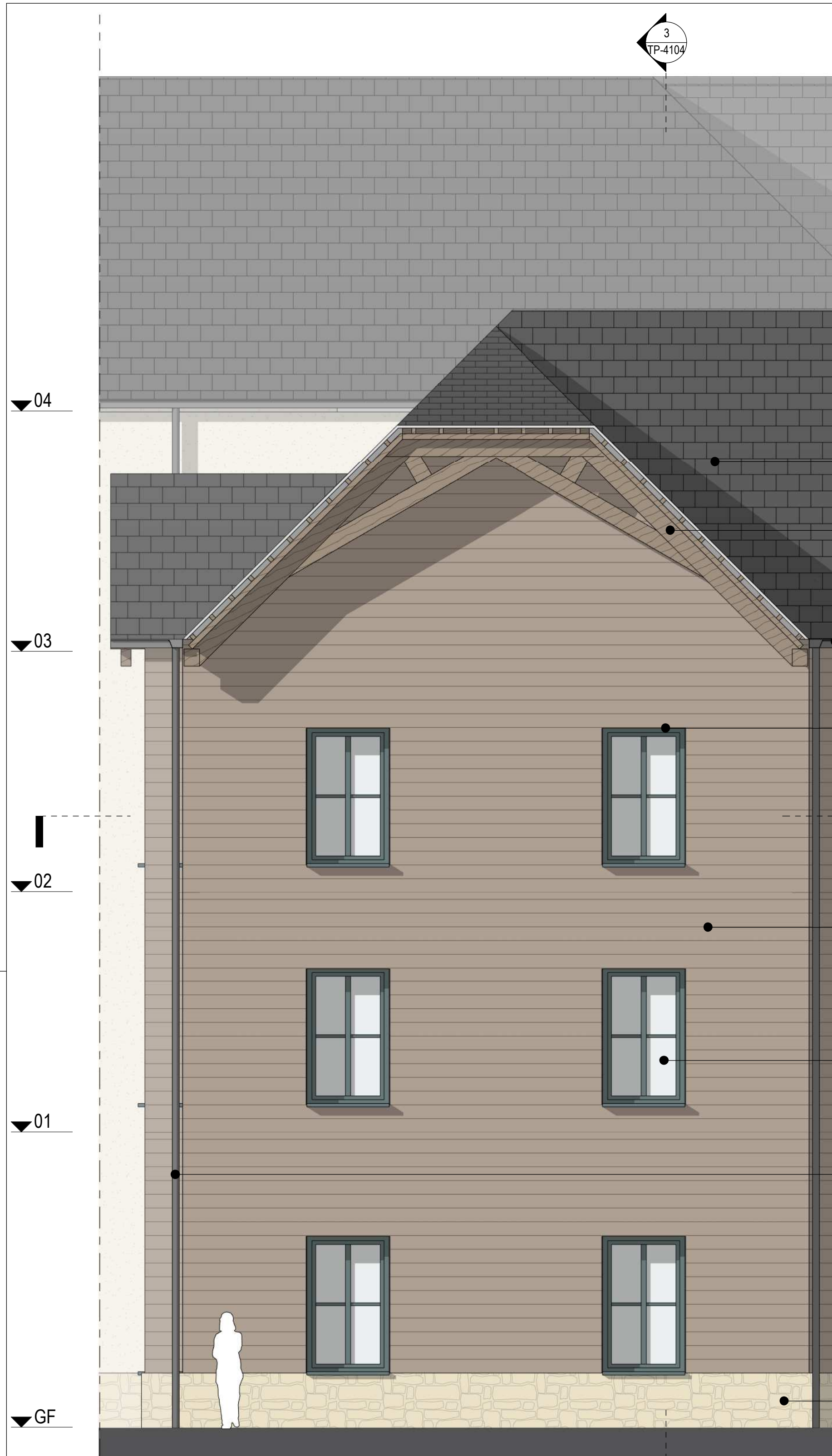
EPR Architects
 30 Milbank, London SW1P 4DU
 +44(0)20 7327800
 www.epr.co.uk

Proposed Great Wolf Lodge
 Chesterton, Bicester, Oxfordshire

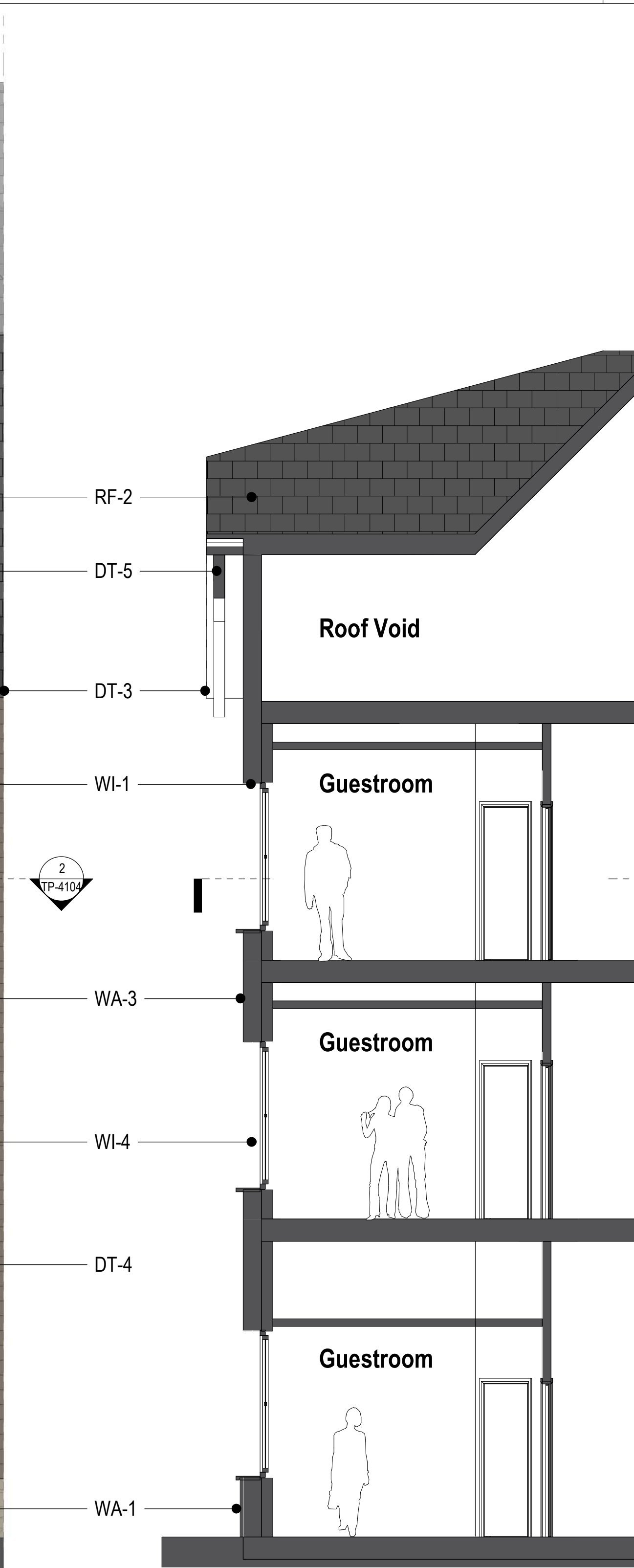
Bay B
 Proposed Typical Bay Study

Scale	Status	Revision
As indicated	Planning	3

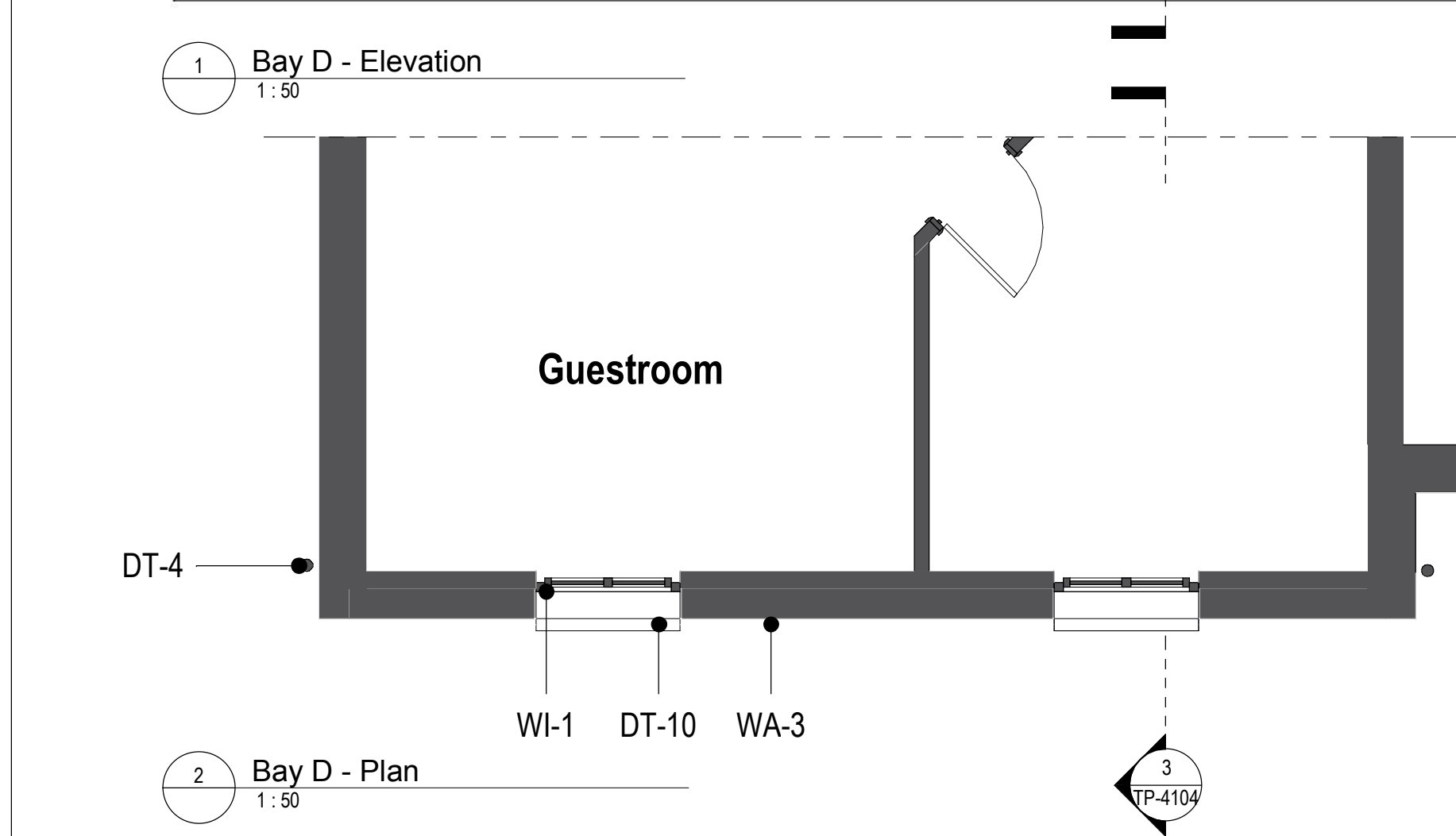
Project Code: 10875 - EPR - 00 - XX - DR - A - TP-4102



1 Bay D - Elevation
1:50



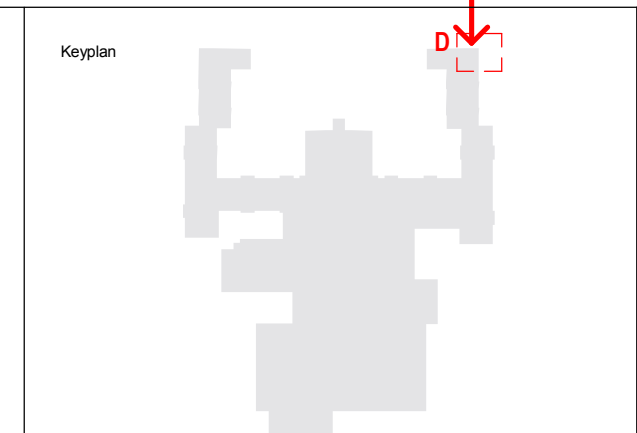
3 Bay D - Section
1:50



2 Bay D - Plan
1:50



4 Bay D - Axonometric



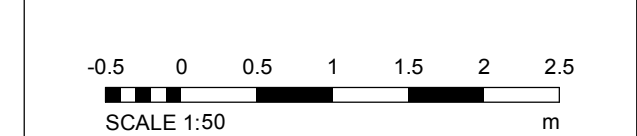
North

Notes:
1. Do not scale
2. Contractor to check all dimensions and report omissions and errors to the Architect
3. EPR Architects accepts no liability for use of this drawing by parties other than the party for whom it was prepared or for purposes other than those for which it was prepared.
4. This drawing is issued in dwg/print format as an uncontrolled version to enable the recipient to prepare their own documents/drawings/models for which they are solely responsible. This drawing is based on project information current at the time of issue. EPR Architects Limited accepts no liability for any alterations or additions to or discrepancies arising out of any change to such project information that occurs to the information after it is issued by EPR Architects Limited.
5. This drawing does not contain shared coordinates and is not issued for coordination purposes.

No.	Revision	Date	Initial	Chk'd
3	P03 - Planning Issue	08.11.19	LOG	AJ
2	P02 - Preliminary Planning Issue	26.10.19	LOG	AJ
1	P01 - Preliminary Planning Issue	25.10.19	LOG	CT

- Key:**
- WA-1- Stone
 - WA-2- Light cream render
 - WA-3- Timber cladding
 - WA-4- Green coloured metal corrugated cladding
 - WA-5- Concrete panels
 - WA-6- Engineering buff brick
- RF-1- Dark red roof tiles
 - RF-2- Dark grey roof tiles
 - RF-3- Green corrugated metal cladding
- WI-1- Dark slate grey metal window frame
 - WI-2- Cream metal window frame
 - WI-3- Light grey metal window frame
 - WI-4- Glass
- DR-1- Light grey metal door frame
 - DR-2- Grey metal barn doors - fixed
 - DR-3- Dark slate grey door frame
 - DR-4- Cream metal door frame
- DT-1- Stone facade detailing
 - DT-2- Metal coping
 - DT-3- Dark grey gutter
 - DT-4- Dark grey downpipe
 - DT-5- Timber
 - DT-6- Timber board for sign
 - DT-7- Concrete
 - DT-8- Metal decorative element
 - DT-9- Light grey metal window cill
 - DT-10- Dark slate grey metal window cill
 - DT-11- Metal louvres
 - DT-12- Timber louvres
 - DT-13- Multi-coloured water slides
 - DT-14- Roller shutter
- EQ-1-Flue
 - EQ-2- Air handling unit
 - EQ-3- PV panels

Notes:
1. Stonework, render, timber cladding & roof tile patterns indicative - shown for illustrative purpose.



EPR Architects
30 Millbank, London SW1P 4DU
+44(0)20 7327800
www.epr.co.uk

Proposed Great Wolf Lodge
Chesterton, Bicester, Oxfordshire

Bay D
Proposed Typical Bay Study

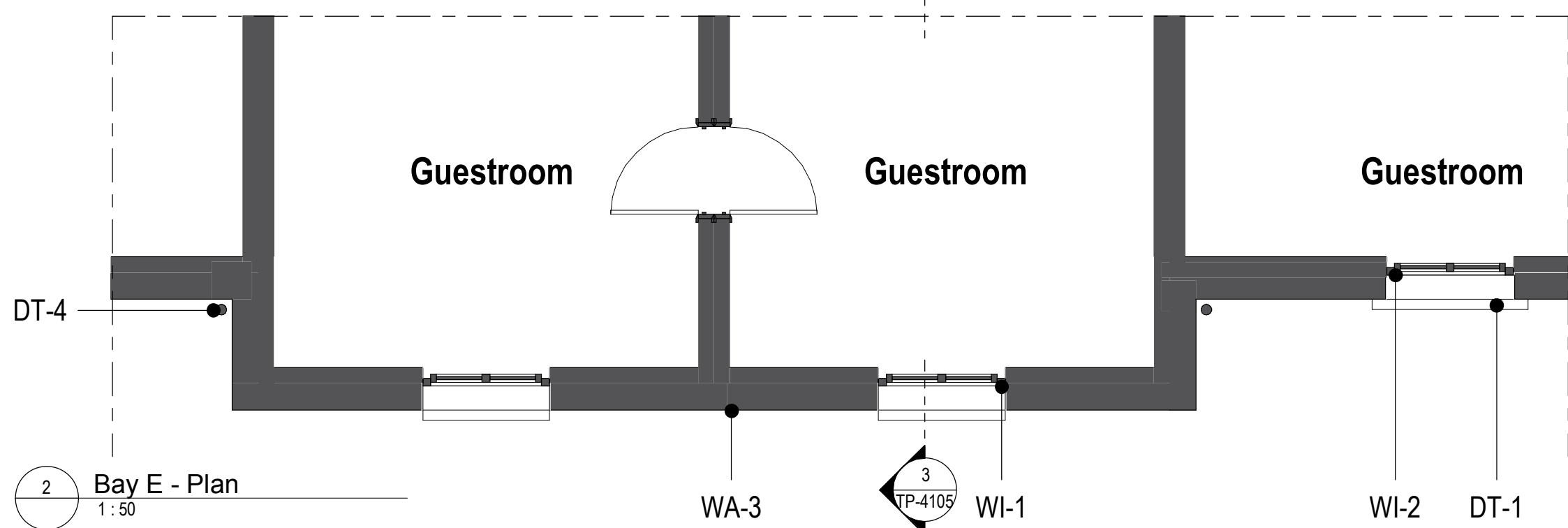
Scale	Status	Revision
As indicated	Planning	3

Project Code: 10875 - EPR - 00 - XX - DR - A - TP-4104



1 Bay E - Elevation NW
1:50

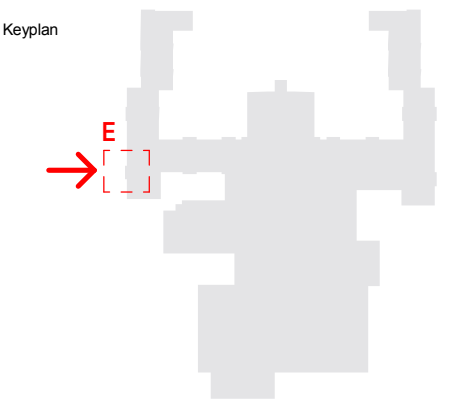
3 Bay E - Section
1:50



2 Bay E - Plan
1:50



4 Bay E - Axonometric



North

Notes:
 1. Do not scale
 2. Contractor to Check all dimensions and report omissions and errors to the Architect
 3. EPR Architects accepts no liability for use of this drawing by parties other than the party for whom it was prepared or for purposes other than those for which it was prepared.
 4. This drawing is issued in dwg/print format as an uncontrolled version to enable the recipient to prepare their own documents/drawings/models for which they are solely responsible. This drawing is based on project information current at the time of issue. EPR Architects Limited accepts no liability for any alterations or additions to or discrepancies arising out of any change to such project information that occurs to the information after it is issued by EPR Architects Limited.
 5. This drawing does not contain shared coordinates and is not issued for coordination purposes.

No.	Revision	Date	Initial	Chk'd
3	P03 - Planning Issue	08.11.19	LOG	AJ
2	P02 - Preliminary Planning Issue	26.10.19	LOG	AJ
1	P01 - Preliminary Planning Issue	25.10.19	LOG	CT

Key:

- WA-1- Stone
- WA-2- Light cream render
- WA-3- Timber cladding
- WA-4- Green coloured metal corrugated cladding
- WA-5- Concrete panels
- WA-6- Engineering buff brick

- RF-1- Dark red roof tiles
- RF-2- Dark grey roof tiles
- RF-3- Green corrugated metal cladding

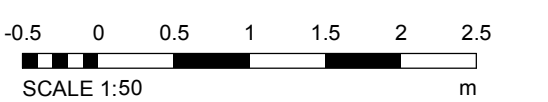
- WI-1- Dark slate grey metal window frame
- WI-2- Cream metal window frame
- WI-3- Light grey metal window frame
- WI-4- Glass

- DR-1- Light grey metal door frame
- DR-2- Grey metal barn doors - fixed
- DR-3- Dark slate grey door frame
- DR-4- Cream metal door frame

- DT-1- Stone facade detailing
- DT-2- Metal coping
- DT-3- Dark grey gutter
- DT-4- Dark grey downpipe
- DT-5- Timber
- DT-6- Timber board for sign
- DT-7- Concrete
- DT-8- Metal decorative element
- DT-9- Light grey metal window cill
- DT-10- Dark slate grey metal window cill
- DT-11- Metal louvres
- DT-12- Timber louvres
- DT-13- Multi-coloured water slides
- DT-14- Roller shutter

- EQ-1-Flue
- EQ-2- Air handling unit
- EQ-3- PV panels

Notes:
 1. Stonework, render, timber cladding & roof tile patterns indicative - shown for illustrative purpose.



EPR Architects

30 Millbank, London SW1P 4DU
 +44(0)20 7327800
 www.epr.co.uk

Proposed Great Wolf Lodge
 Chesterton, Bicester, Oxfordshire

Bay E

Proposed Typical Bay Study

Scale @A1 Status Revision
 As indicated Planning 3

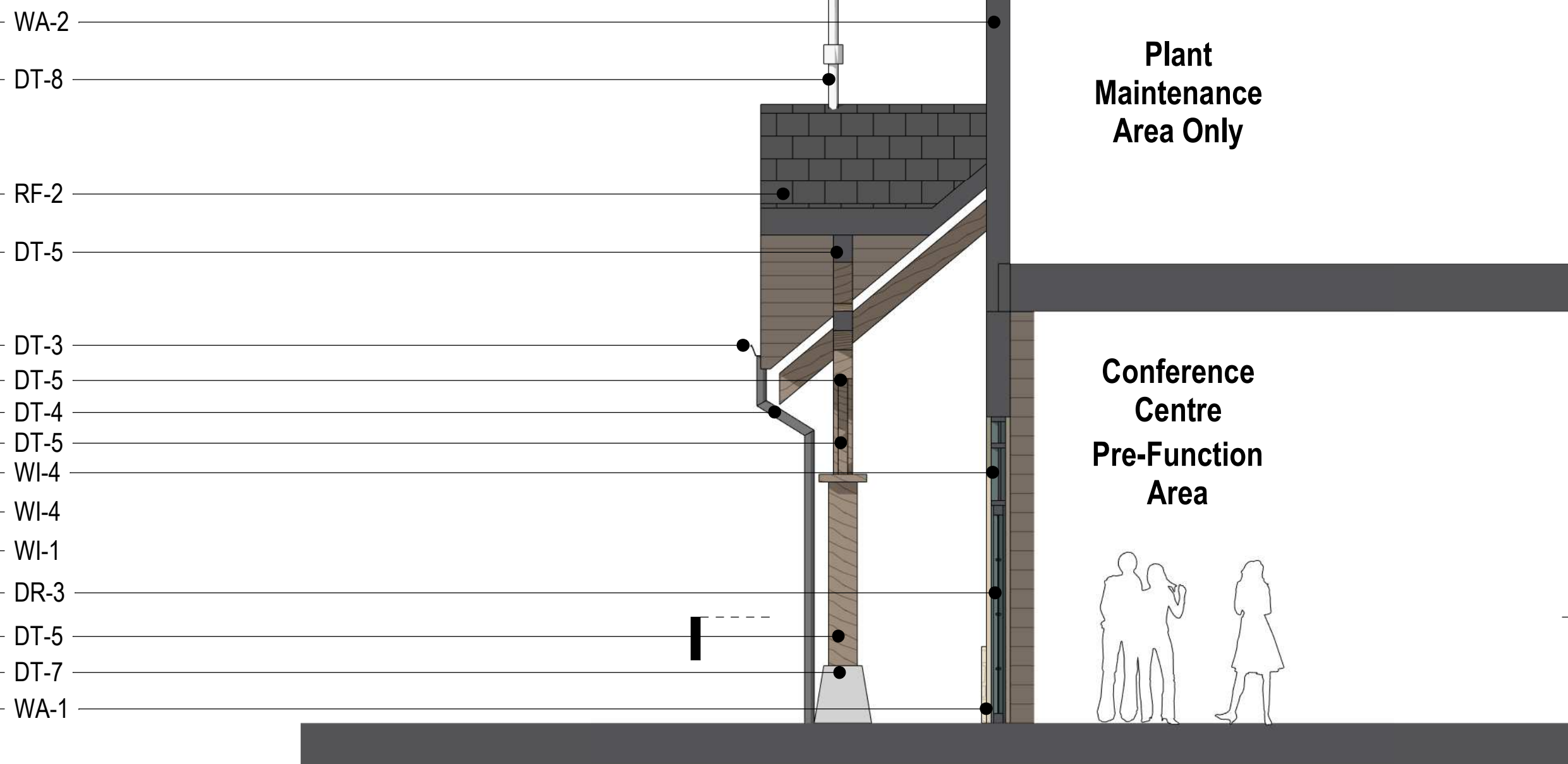
Project Code Originator Zone Level Type Role Class Number
 10875 - EPR - 00 - XX - DR - A - TP-4105

D:\Rev\03\10875-EPR\22\A-C\TP4105_Misc\Bay Elevation.dwg on 10/11/19

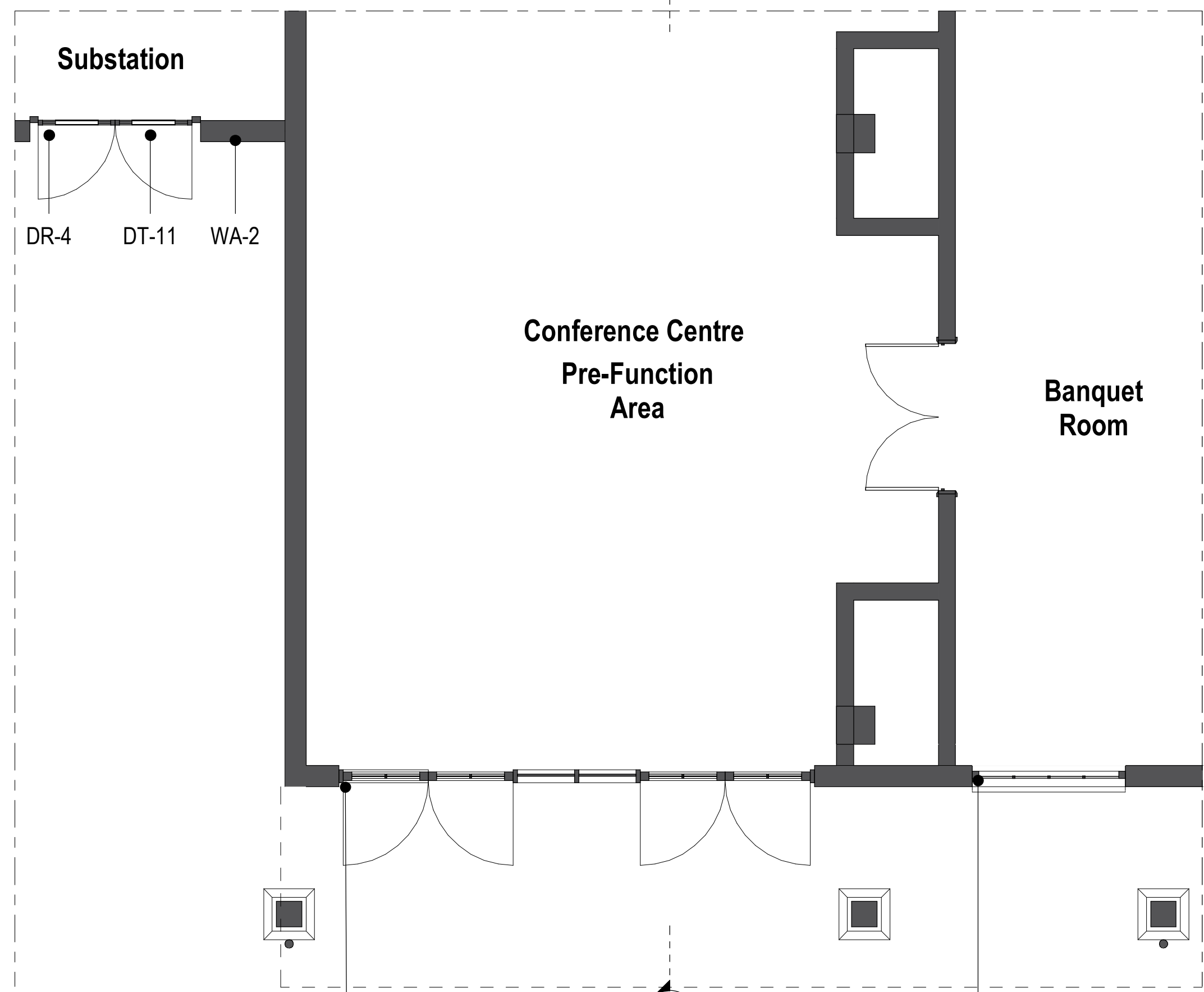
2019-11-08 11:27:17



1 Bay F - Elevation
1:50



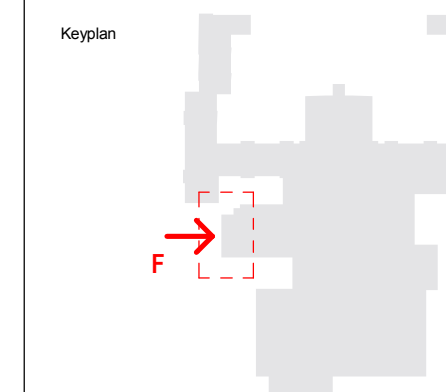
3 Bay F - Section
1:50



2 Bay F - Plan
1:50



4 Bay F - Axonometry



North

Notes:
1. Do not scale
2. Contractor to Check all dimensions and report omissions and errors to the Architect
3. EPR Architects accepts no liability for use of this drawing by parties other than the party for whom it was prepared or for purposes other than those for which it was prepared.
4. This drawing is issued in dwg/print format as an uncontrolled version to enable the recipient to prepare their own documents/drawings/models for which they are solely responsible. This drawing is based on project information current at the time of issue. EPR Architects Limited accepts no liability for any alterations or additions to or discrepancies arising out of any change to such project information that occurs to the information after it is issued by EPR Architects Limited.
5. This drawing does not contain shared coordinates and is not issued for coordination purposes.

No.	Revision	Date	Initial	Chk'd
3	P03 - Planning Issue	08.11.19	LOG	AJ
2	P02 - Preliminary Planning Issue	26.10.19	LOG	AJ
1	P01 - Preliminary Planning Issue	25.10.19	LOG	CT

- Key:**
- WA-1- Stone
 - WA-2- Light cream render
 - WA-3- Timber cladding
 - WA-4- Green coloured metal corrugated cladding
 - WA-5- Concrete panels
 - WA-6- Engineering buff brick

- RF-1- Dark red roof tiles
- RF-2- Dark grey roof tiles
- RF-3- Green corrugated metal cladding

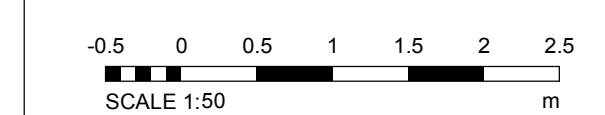
- WI-1- Dark slate grey metal window frame
- WI-2- Cream metal window frame
- WI-3- Light grey metal window frame
- WI-4- Glass

- DR-1- Light grey metal door frame
- DR-2- Grey metal barn doors - fixed
- DR-3- Dark slate grey door frame
- DR-4- Cream metal door frame

- DT-1- Stone facade detailing
- DT-2- Metal coping
- DT-3- Dark grey gutter
- DT-4- Dark grey downpipe
- DT-5- Timber
- DT-6- Timber board for sign
- DT-7- Concrete
- DT-8- Metal decorative element
- DT-9- Light grey metal window cill
- DT-10- Dark slate grey metal window cill
- DT-11- Metal louvres
- DT-12- Timber louvres
- DT-13- Multi-coloured water slides
- DT-14- Roller shutter

- EQ-1- Flue
- EQ-2- Air handling unit
- EQ-3- PV panels

Notes:
1. Stonework, render, timber cladding & roof tile patterns indicative - shown for illustrative purpose.



EPR Architects
30 Millbank, London SW1P 4DU
+44(0)20 7327800
www.epr.co.uk

Proposed Great Wolf Lodge
Chesterton, Bicester, Oxfordshire

Bay F
Proposed Typical Bay Study - Conference Centre

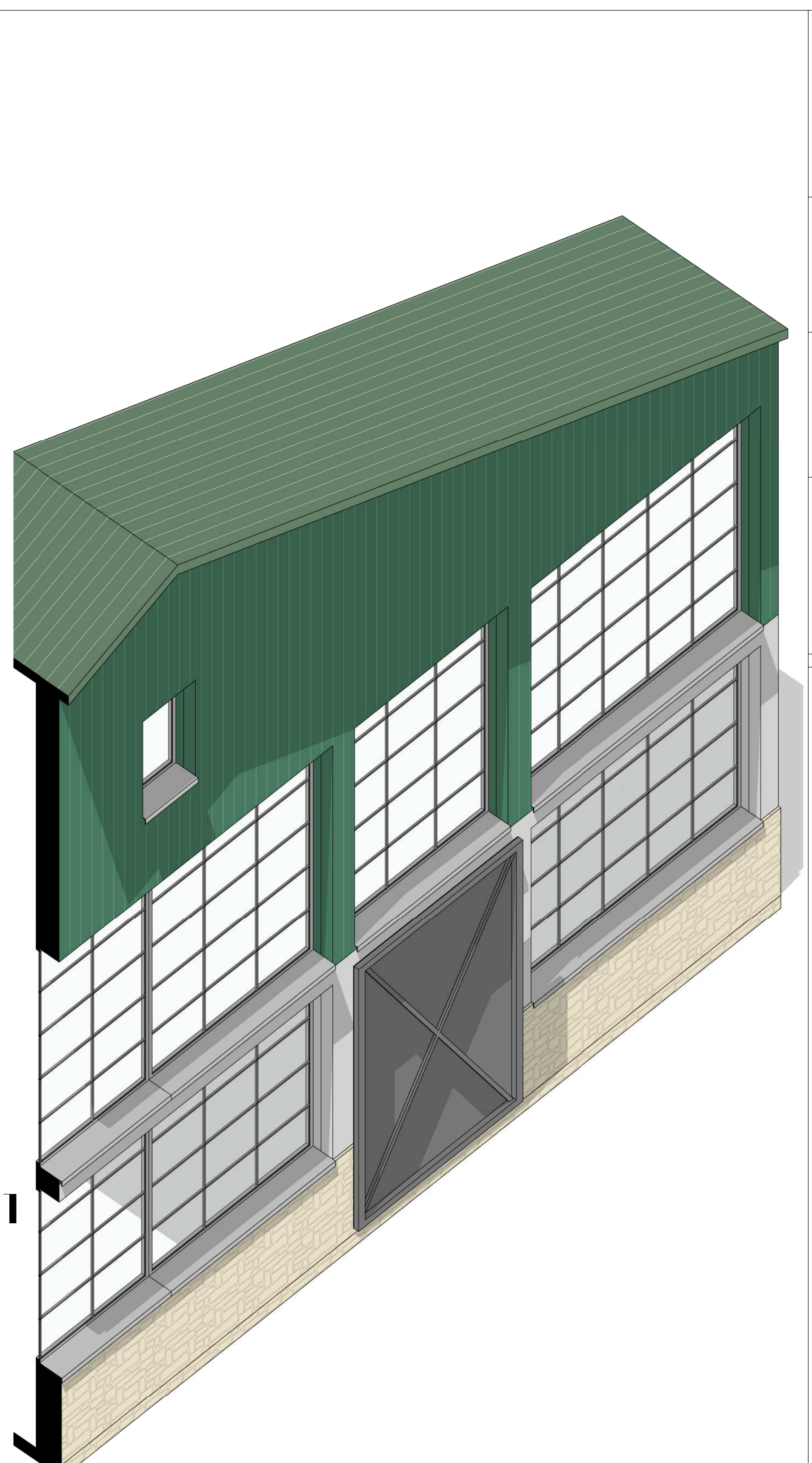
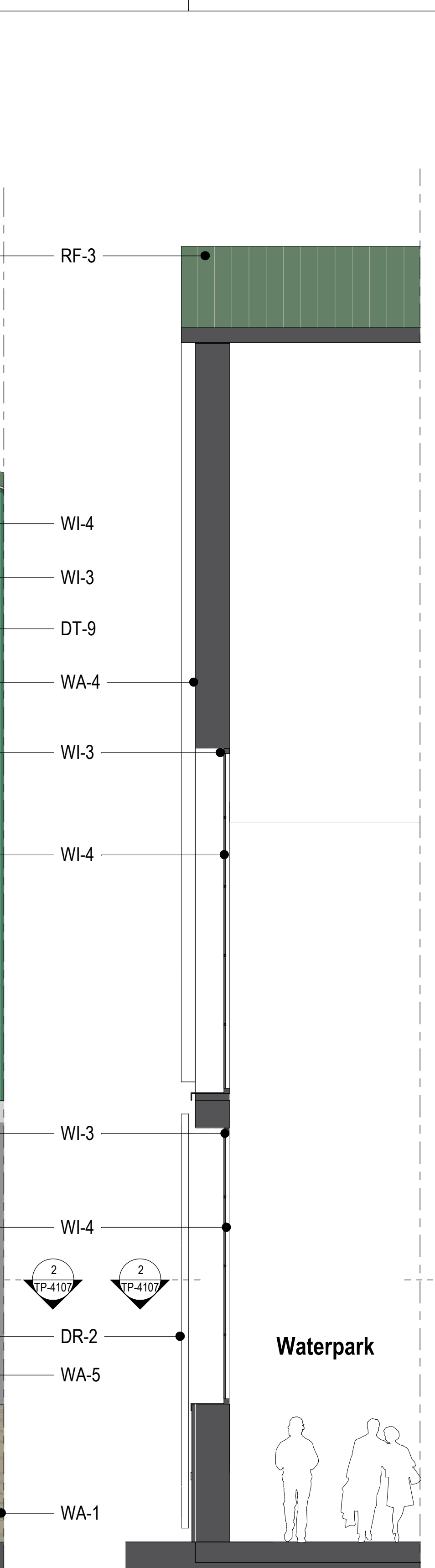
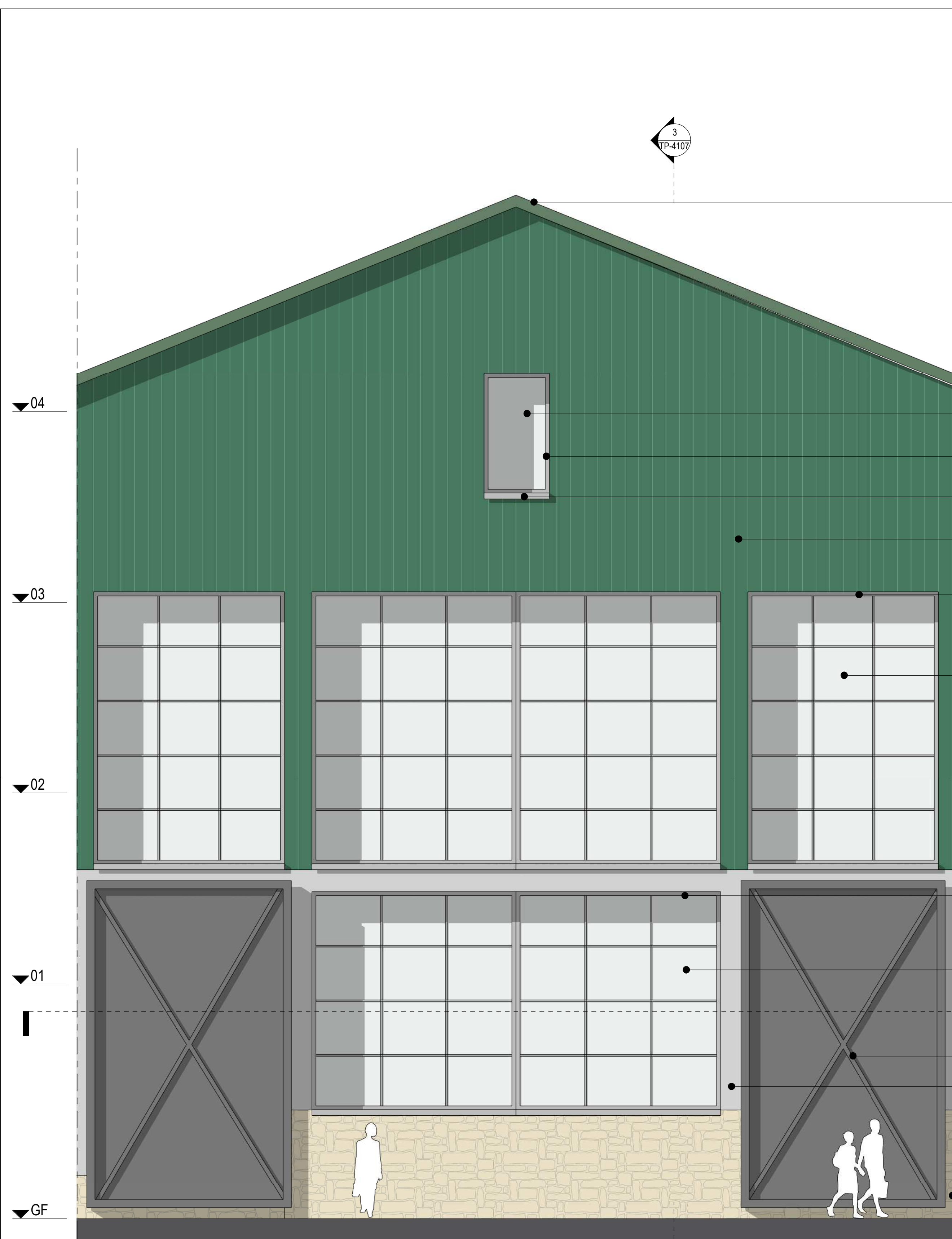
Scale @A1 Status Revision

As indicated Planning 3

Project Code Originator Zone Level Type Role Class Number

10875 - EPR - 00 - XX - DR - A - TP-4106

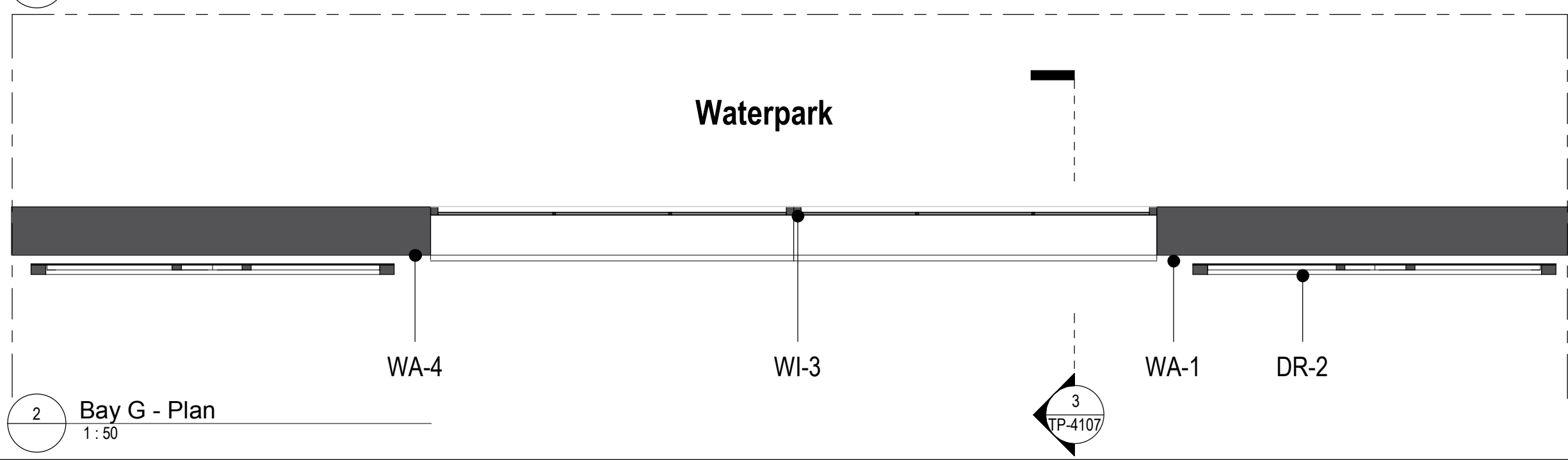
0 Rev:03/19/10/15 EPR/22/24/6 A-CENTRAL_Mixed_Renovations.dwg on 14/11/2019 11:08:11 02/23



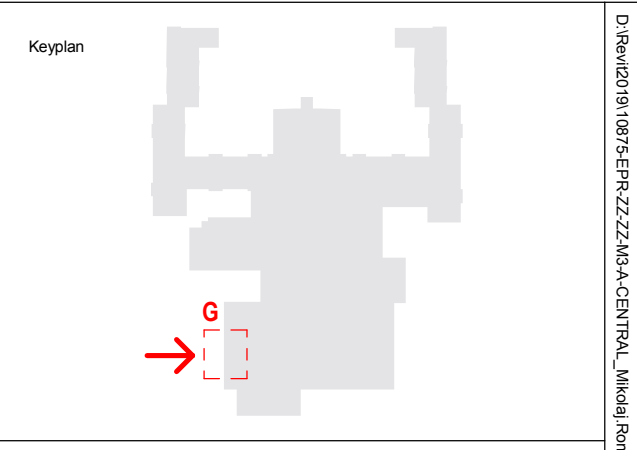
1 Bay G - Elevation
1:50

3 Bay G - Section
1:50

4 Bay G - Axonometric



2 Bay G - Plan
1:50



North

Notes:
 1. Do not scale
 2. Contractor to check all dimensions and report omissions and errors to the Architect
 3. EPR Architects accepts no liability for use of this drawing by parties other than the party for whom it was prepared or for purposes other than those for which it was prepared.
 4. This drawing is issued in dwg/print format as an uncontrolled version to enable the recipient to prepare their own documents/drawings/models for which they are solely responsible. This drawing is based on project information current at the time of issue. EPR Architects Limited accepts no liability for any alterations or additions to or discrepancies arising out of any change to such project information that occurs to the information after it is issued by EPR Architects Limited.
 5. This drawing does not contain shared coordinates and is not issued for coordination purposes.

No.	Revision	Date	Initial	Chk'd
3	P03 - Planning Issue	08.11.19	LOG	AJ
2	P02 - Preliminary Planning Issue	26.10.19	LOG	AJ
1	P01 - Preliminary Planning Issue	25.10.19	LOG	CT

- Key:**
- WA-1 - Stone
 - WA-2 - Light cream render
 - WA-3 - Timber cladding
 - WA-4 - Green coloured metal corrugated cladding
 - WA-5 - Concrete panels
 - WA-6 - Engineering buff brick

- RF-1 - Dark red roof tiles
- RF-2 - Dark grey roof tiles
- RF-3 - Green corrugated metal cladding

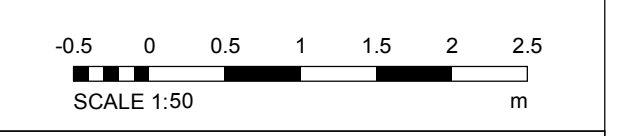
- WI-1 - Dark slate grey metal window frame
- WI-2 - Cream metal window frame
- WI-3 - Light grey metal window frame
- WI-4 - Glass

- DR-1 - Light grey metal door frame
- DR-2 - Grey metal barn doors - fixed
- DR-3 - Dark slate grey door frame
- DR-4 - Cream metal door frame

- DT-1 - Stone facade detailing
- DT-2 - Metal coping
- DT-3 - Dark grey gutter
- DT-4 - Dark grey downpipe
- DT-5 - Timber
- DT-6 - Timber board for sign
- DT-7 - Concrete
- DT-8 - Metal decorative element
- DT-9 - Light grey metal window cill
- DT-10 - Dark slate grey metal window cill
- DT-11 - Metal louvres
- DT-12 - Timber louvres
- DT-13 - Multi-coloured water slides
- DT-14 - Roller shutter

- EQ-1 - Flue
- EQ-2 - Air handling unit
- EQ-3 - PV panels

Notes:
 1. Stonework, render, timber cladding & roof tile patterns indicative - shown for illustrative purpose.



EPR Architects
 30 Milbank, London SW1P 4DU
 +44(0)20 7327800
 www.epr.co.uk

Proposed Great Wolf Lodge
 Chesterton, Bicester, Oxfordshire

Bay G
 Proposed Typical Bay Study - Waterpark

Scale @A1 Status Revision
 As indicated Planning 3

Project Code Originator Zone Level Type Role Class Number
 10875 - EPR - 00 - XX - DR - A - TP-4107