

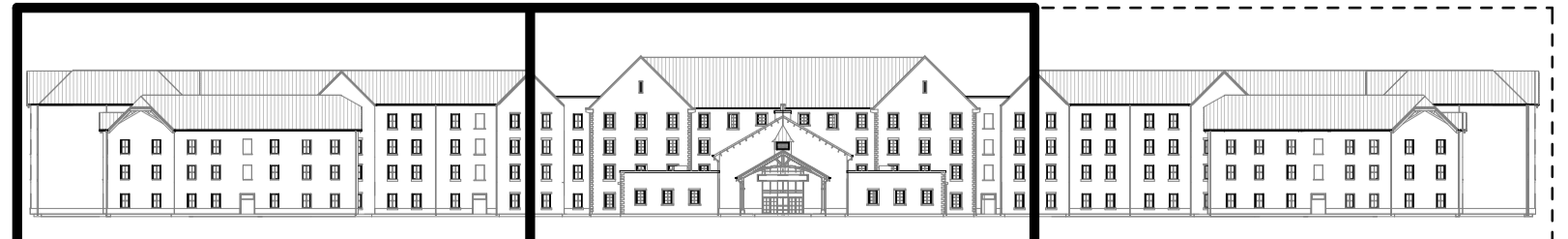


1  
04-0001  
NE Elevation - Part 1  
1:100

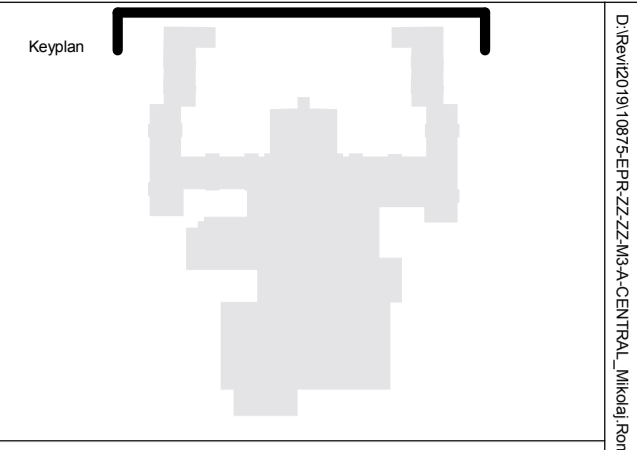
WA-2 WA-2 WA-3 DT-1 WA-1 WA-1 RF-1 RF-2 WI-4 WA-3 WI-1 DR-3 DT-8 DT-3 WI-4 WI-1 DT-4 RF-2 WI-2 DR-4 WA-2 DT-1



2  
04-0001  
NE Elevation - Part 2  
1:100



PART 1 TP-4201 PART 2 TP-4202 PART 3

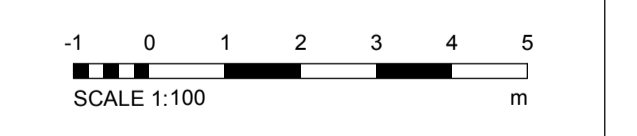


Notes:  
1. Do not scale  
2. Contractor to check all dimensions and report omissions and errors to the Architect  
3. EPR Architects accepts no liability for use of this drawing by parties other than the party for whom it was prepared or for purposes other than those for which it was prepared  
4. This drawing is issued in dwg/print format as an uncontrolled version to enable the recipient to prepare their own documents/drawings/models for which they are solely responsible. This drawing is based on project information current at the time of issue. EPR Architects Limited accepts no liability for any alterations or additions to or discrepancies arising out of any change to such project information that occurs to the information after it is issued by EPR Architects Limited.  
5. This drawing does not contain shared coordinates and is not issued for coordination purposes.

No.	Revision	Date	Initial	Chk'd
3	P03 - Planning Issue	08.11.19	LOG	AJ
2	P02 - Preliminary Planning Issue	26.10.19	LOG	AJ
1	P01 - Preliminary Planning Issue	25.10.19	LOG	CT

- Key:**
- WA-1 - Stone
  - WA-2 - Light cream render
  - WA-3 - Timber cladding
  - WA-4 - Green coloured metal corrugated cladding
  - WA-5 - Concrete panels
  - WA-6 - Engineering buff brick
  - RF-1 - Dark red roof tiles
  - RF-2 - Dark grey roof tiles
  - RF-3 - Green corrugated metal cladding
  - WI-1 - Dark slate grey metal window frame
  - WI-2 - Cream metal window frame
  - WI-3 - Light grey metal window frame
  - WI-4 - Glass
  - DR-1 - Light grey metal door frame
  - DR-2 - Grey metal barn doors - fixed
  - DR-3 - Dark slate grey door frame
  - DR-4 - Cream metal door frame
  - DT-1 - Stone facade detailing
  - DT-2 - Metal coping
  - DT-3 - Dark grey gutter
  - DT-4 - Dark grey downpipe
  - DT-5 - Timber
  - DT-6 - Timber board for sign
  - DT-7 - Concrete
  - DT-8 - Metal decorative element
  - DT-9 - Light grey metal window cill
  - DT-10 - Dark slate grey metal window cill
  - DT-11 - Metal louvres
  - DT-12 - Timber louvres
  - DT-13 - Multi-coloured water slides
  - DT-14 - Roller shutter
  - EQ-1 - Flue
  - EQ-2 - Air handling unit
  - EQ-3 - PV panels

Notes:  
1. Stonework, render, timber cladding & roof tile patterns indicative - shown for illustrative purpose.



**EPR Architects**  
30 Millbank, London SW1P 4DU  
+44(0)20 7327800  
www.epr.co.uk

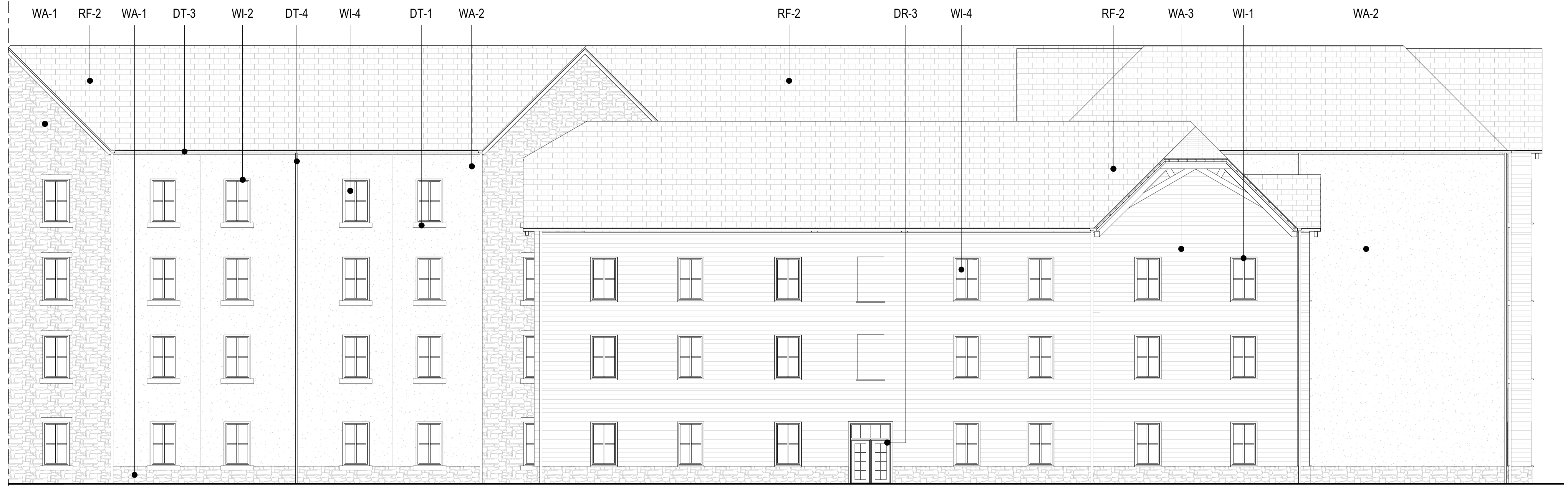
Proposed Great Wolf Lodge  
Chesterton, Bicester, Oxfordshire

Proposed Elevations - North-East

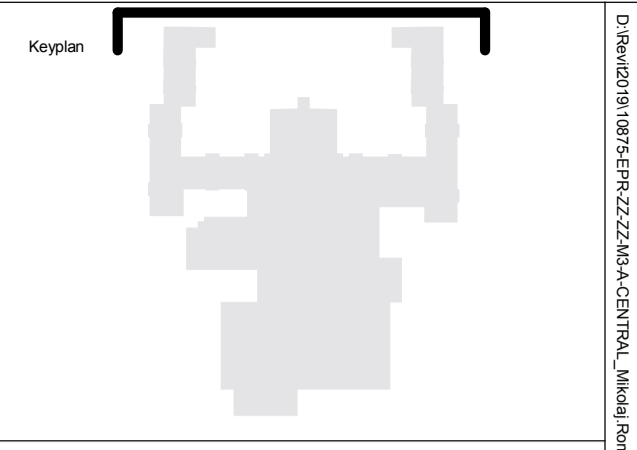
Scale	Status	Revision
As indicated	Planning	3

Project Code: 10875 - EPR - 00 - XX - DR - A - TP-4201

10875-EPR-00-XX-DR-A-TP-4201



1 NE Elevation - Part 3  
04-0001 1:100



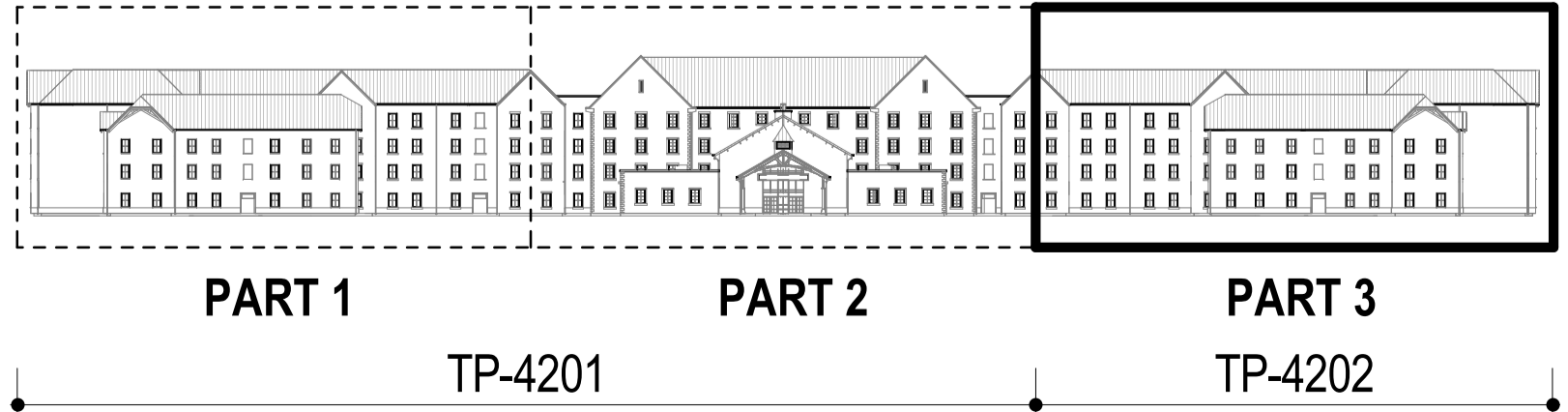
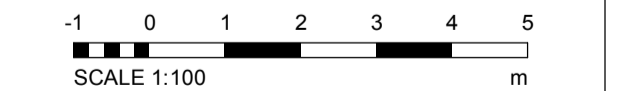
North

Notes:  
 1. Do not scale  
 2. Contractor to Check all dimensions and report omissions and errors to the Architect  
 3. EPR Architects accepts no liability for use of this drawing by parties other than the party for whom it was prepared or for purposes other than those for which it was prepared.  
 4. This drawing is issued in dwg/print format as an uncontrolled version to enable the recipient to prepare their own documents/drawings/models for which they are solely responsible. This drawing is based on project information current at the time of issue. EPR Architects Limited accepts no liability for any alterations or additions to or discrepancies arising out of any change to such project information that occurs to the information after it is issued by EPR Architects Limited.  
 5. This drawing does not contain shared coordinates and is not issued for coordination purposes.

No.	Revision	Date	Initial	Chk'd
3	P03 - Planning Issue	08.11.19	LOG	AJ
2	P02 - Preliminary Planning Issue	20.10.19	LOG	AJ
1	P01 - Preliminary Planning Issue	25.10.19	LOG	CT

- Key:**
- WA-1- Stone
  - WA-2- Light cream render
  - WA-3- Timber cladding
  - WA-4- Green coloured metal corrugated cladding
  - WA-5- Concrete panels
  - WA-6- Engineering buff brick
  
  - RF-1- Dark red roof tiles
  - RF-2- Dark grey roof tiles
  - RF-3- Green corrugated metal cladding
  
  - WI-1- Dark slate grey metal window frame
  - WI-2- Cream metal window frame
  - WI-3- Light grey metal window frame
  - WI-4- Glass
  
  - DR-1- Light grey metal door frame
  - DR-2- Grey metal barn doors - fixed
  - DR-3- Dark slate grey door frame
  - DR-4- Cream metal door frame
  
  - DT-1- Stone facade detailing
  - DT-2- Metal coping
  - DT-3- Dark grey gutter
  - DT-4- Dark grey downpipe
  - DT-5- Timber
  - DT-6- Timber board for sign
  - DT-7- Concrete
  - DT-8- Metal decorative element
  - DT-9- Light grey metal window cill
  - DT-10- Dark slate grey metal window cill
  - DT-11- Metal louvres
  - DT-12- Timber louvres
  - DT-13- Multi-coloured water slides
  - DT-14- Roller shutter
  
  - EQ-1- Flue
  - EQ-2- Air handling unit
  - EQ-3- PV panels

Notes:  
 1. Stonework, render, timber cladding & roof tile patterns indicative - shown for illustrative purpose.



**EPR Architects**  
 30 Millbank, London SW1P 4DU  
 +44(0)20 7327800  
 www.epr.co.uk

Proposed Great Wolf Lodge  
 Chesterton, Bicester, Oxfordshire

Proposed Elevations - North-East

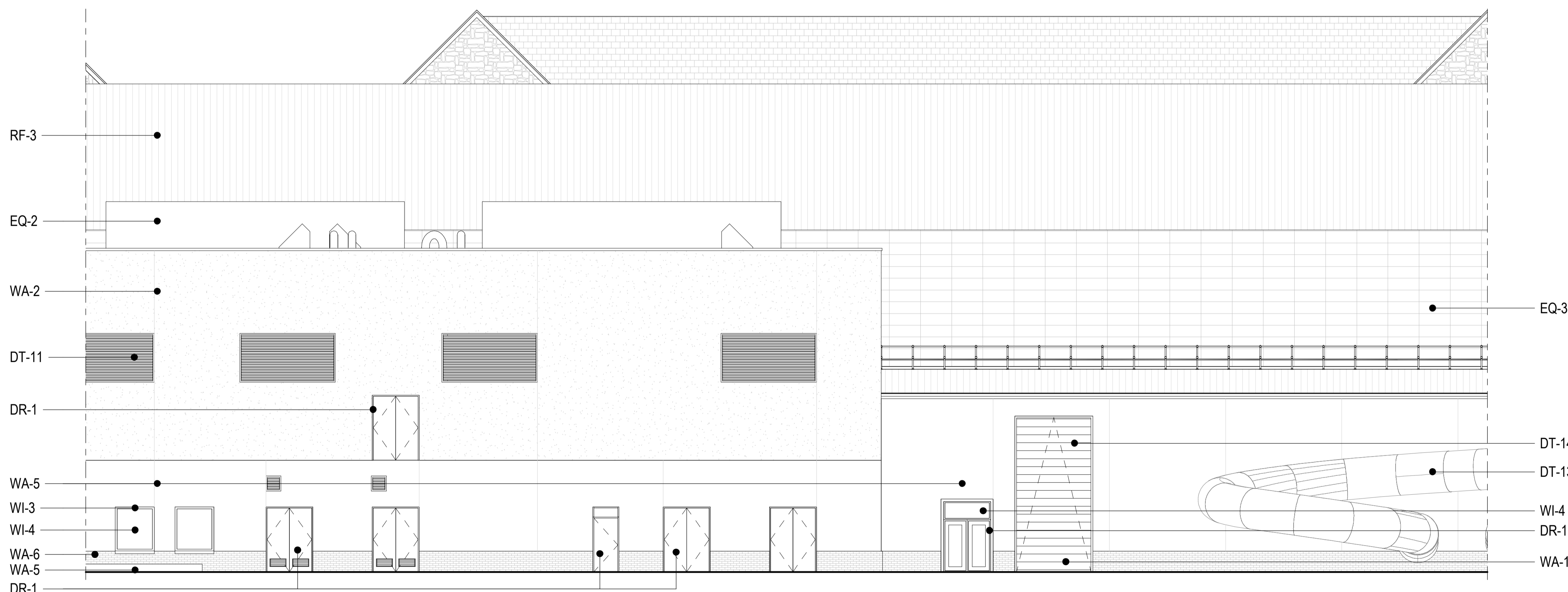
Scale	Status	Revision
As indicated	Planning	3

Project Code: 10875 - EPR - 00 - XX - DR - A - TP-4202

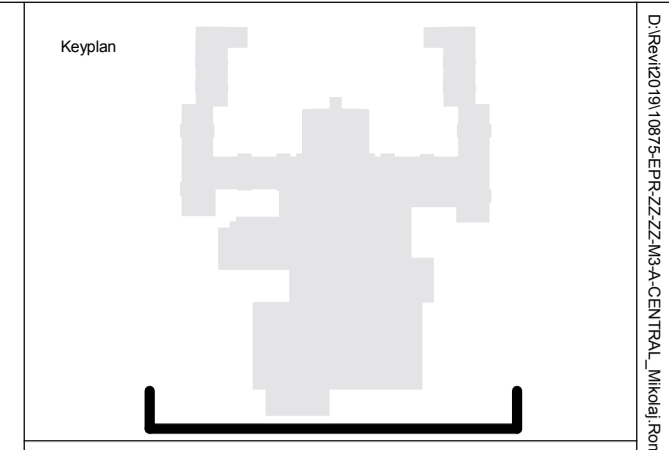


1 SW Elevation - Part 1  
1:100

WA-1 WA-2 DR-4 DT-3 WI-4 WI-2 WA-3 WA-2 RF-2 WI-1 WA-1 WA-1 WA-5 WA-6 WA-5 WA-2 DR-1 WI-3 WI-4



2 SW Elevation - Part 2  
1:100



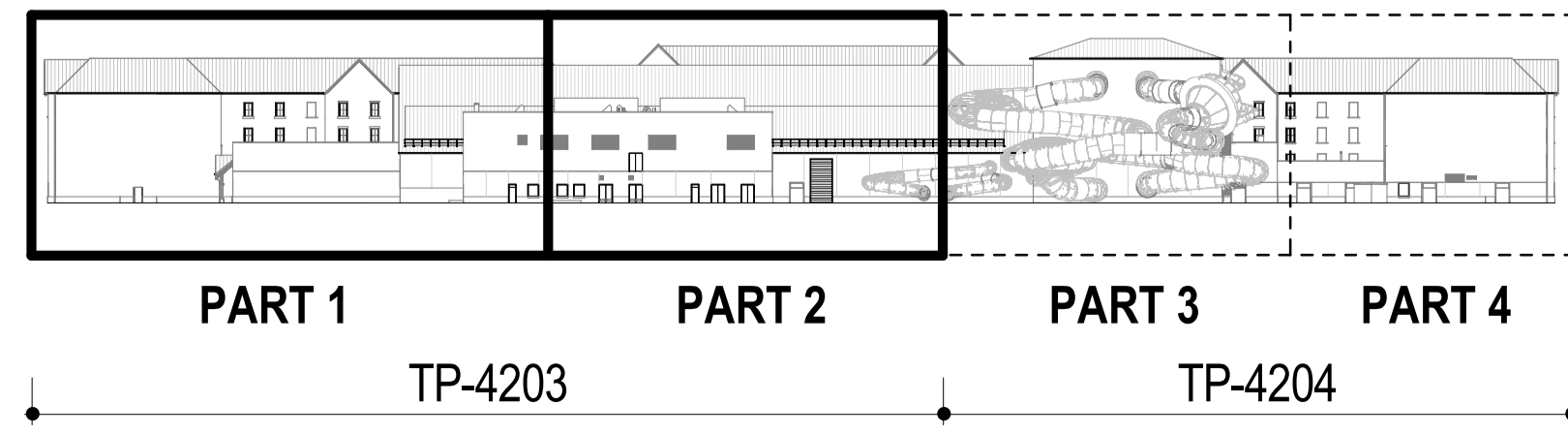
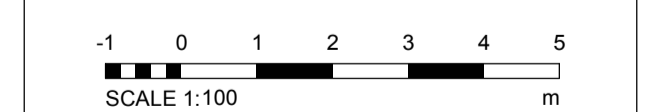
Notes:  
1. Do not scale  
2. Contractor to check all dimensions and report omissions and errors to the Architect  
3. EPR Architects accepts no liability for use of this drawing by parties other than the party for whom it was prepared or for purposes other than those for which it was prepared.  
4. This drawing is issued in dwg/dgn format as an uncontrolled version to enable the recipient to prepare their own documents/drawings/models for which they are solely responsible. This drawing is based on project information current at the time of issue. EPR Architects Limited accepts no liability for any alterations or additions to or discrepancies arising out of any change to such project information that occurs to the information after it is issued by EPR Architects Limited.  
5. This drawing does not contain shared coordinates and is not issued for coordination purposes.

No.	Revision	Date	Initial	Chk'd
3	P03 - Planning Issue	08.11.19	LOG	AJ
2	P02 - Preliminary Planning Issue	20.10.19	LOG	AJ
1	P01 - Preliminary Planning Issue	25.10.19	LOG	CT

- Key:**
- WA-1- Stone
  - WA-2- Light cream render
  - WA-3- Timber cladding
  - WA-4- Green coloured metal corrugated cladding
  - WA-5- Concrete panels
  - WA-6- Engineering buff brick
- RF-1- Dark red roof tiles
  - RF-2- Dark grey roof tiles
  - RF-3- Green corrugated metal cladding
- WI-1- Dark slate grey metal window frame
  - WI-2- Cream metal window frame
  - WI-3- Light grey metal window frame
  - WI-4- Glass
- DR-1- Light grey metal door frame
  - DR-2- Grey metal barn doors - fixed
  - DR-3- Dark slate grey door frame
  - DR-4- Cream metal door frame
- DT-1- Stone facade detailing
  - DT-2- Metal coping
  - DT-3- Dark grey gutter
  - DT-4- Dark grey downpipe
  - DT-5- Timber
  - DT-6- Timber board for sign
  - DT-7- Concrete
  - DT-8- Metal decorative element
  - DT-9- Light grey metal window cill
  - DT-10- Dark slate grey metal window cill
  - DT-11- Metal louvres
  - DT-12- Timber louvres
  - DT-13- Multi-coloured water slides
  - DT-14- Roller shutter
- EQ-1-Flue
  - EQ-2- Air handling unit
  - EQ-3- PV panels

10875-EPR-00-XX-DR-A-TP-4204

Notes:  
1. Stonework, render, timber cladding & roof tile patterns indicative - shown for illustrative purpose.



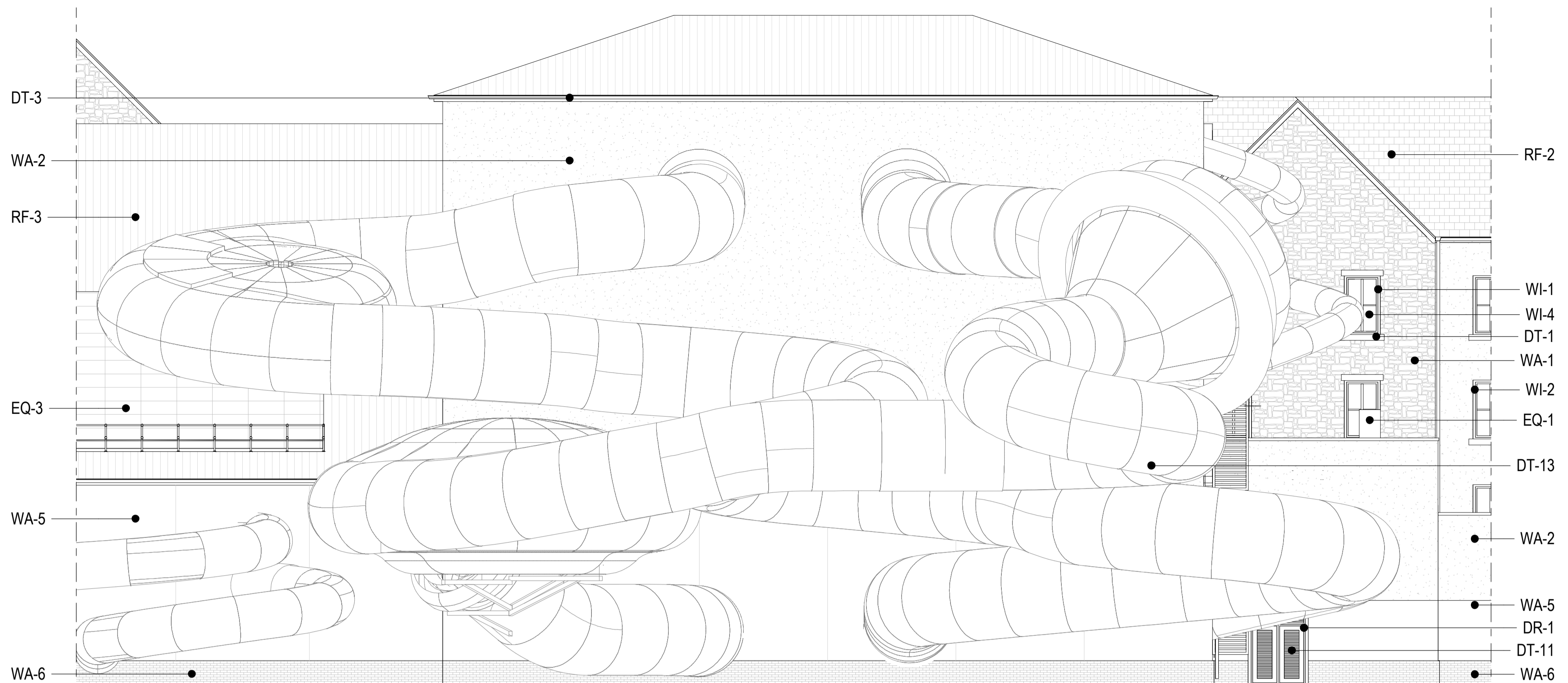
**EPR Architects**  
30 Millbank, London SW1P 4DU  
+44(0)20 7327800  
www.epr.co.uk

Proposed Great Wolf Lodge  
Chesterton, Bicester, Oxfordshire

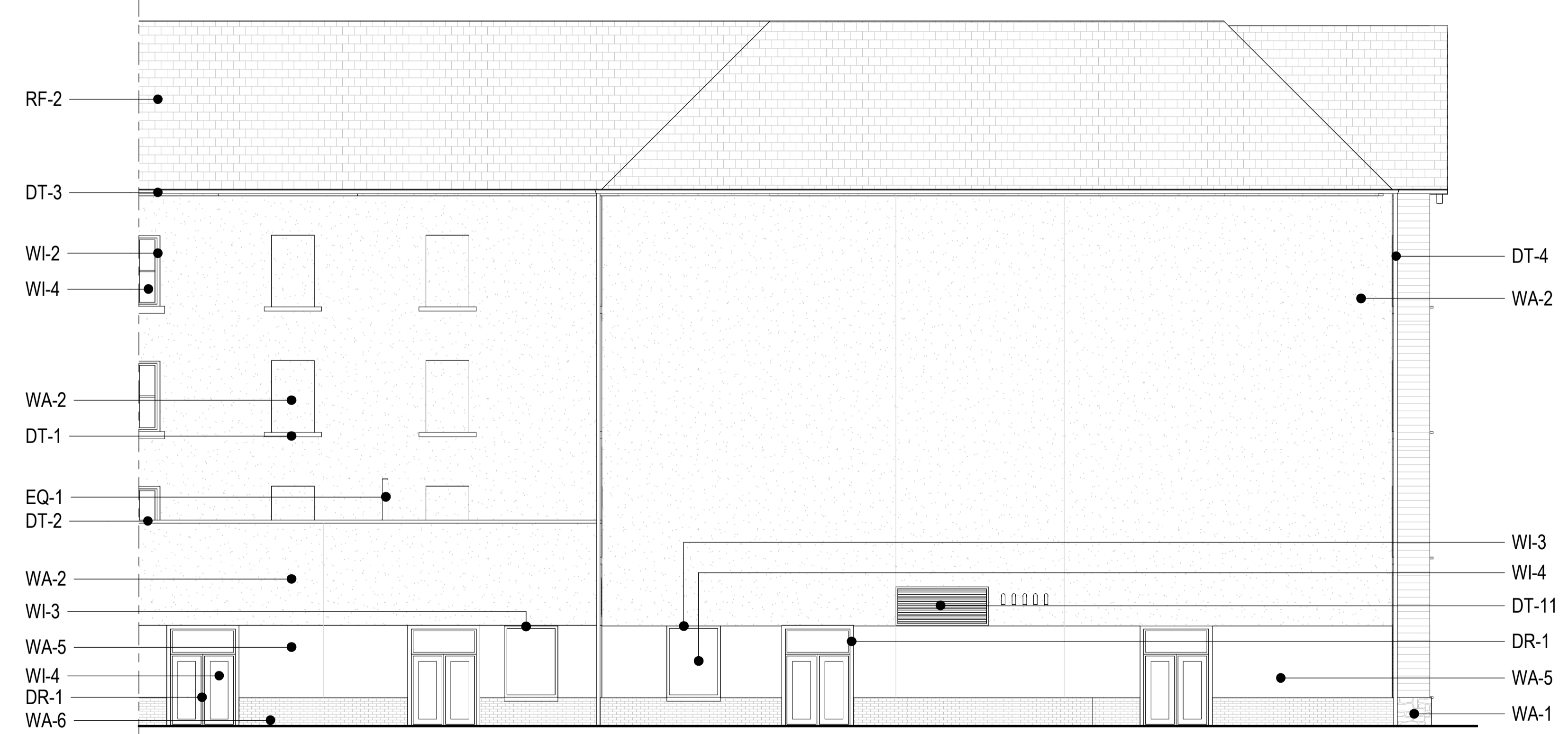
Proposed Elevations - South-West

Scale	Status	Revision
As indicated	Planning	3

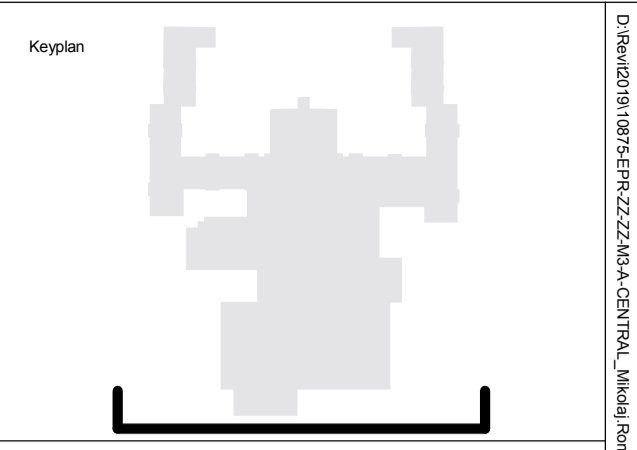
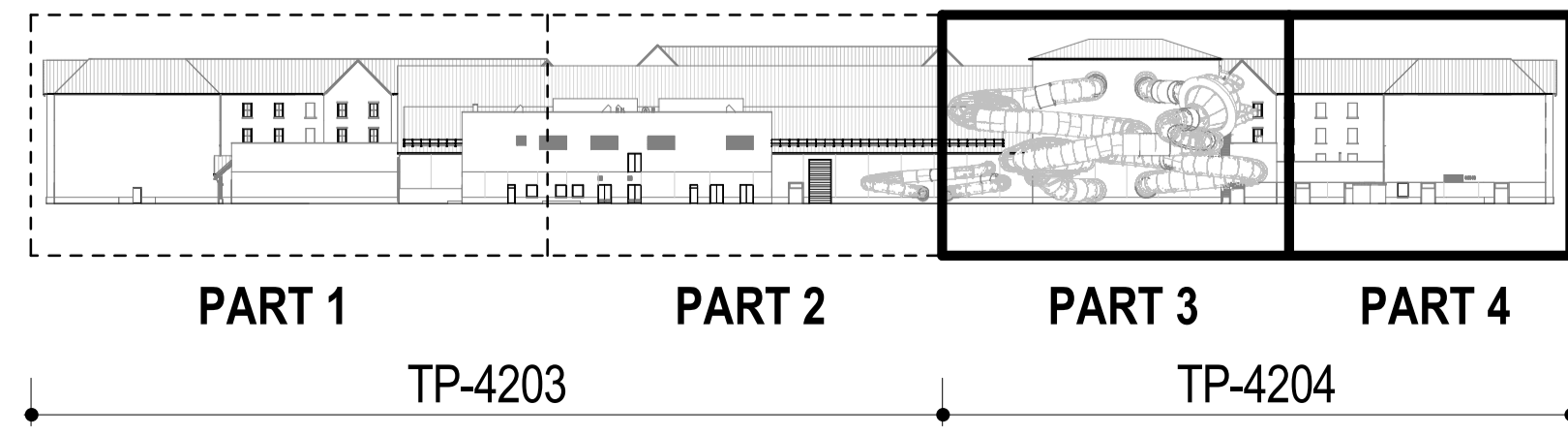
Project Code: Originator: Zone: Level: Type: Role: Class: Number  
10875 - EPR - 00 - XX - DR - A - TP - 4203



3 SW Elevation - Part 3  
1:100



1 SW Elevation - Part 4  
1:100



North

Notes:  
1. Do not scale  
2. Contractor to Check all dimensions and report omissions and errors to the Architect  
3. EPR Architects accepts no liability for use of this drawing by parties other than the party for whom it was prepared or for purposes other than those for which it was prepared  
4. This drawing is issued in dwg/print format as an uncontrolled version to enable the recipient to prepare their own documents/drawings/models for which they are solely responsible. This drawing is based on project information current at the time of issue. EPR Architects Limited accepts no liability for any alterations or additions to or discrepancies arising out of any change to such project information that occurs to the information after it is issued by EPR Architects Limited.  
5. This drawing does not contain shared coordinates and is not issued for coordination purposes.

No.	Revision	Date	Initial	Chk'd
3	P03 - Planning Issue	08.11.19	LOG	AJ
2	P02 - Preliminary Planning Issue	30.10.19	LOG	AJ
1	P01 - Preliminary Planning Issue	25.10.19	LOG	CT

**Key:**  
WA-1- Stone  
WA-2- Light cream render  
WA-3- Timber cladding  
WA-4- Green coloured metal corrugated cladding  
WA-5- Concrete panels  
WA-6- Engineering buff brick

RF-1- Dark red roof tiles  
RF-2- Dark grey roof tiles  
RF-3- Green corrugated metal cladding

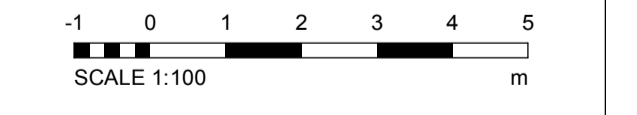
WI-1- Dark slate grey metal window frame  
WI-2- Cream metal window frame  
WI-3- Light grey metal window frame  
WI-4- Glass

DR-1- Light grey metal door frame  
DR-2- Grey metal barn doors - fixed  
DR-3- Dark slate grey door frame  
DR-4- Cream metal door frame

DT-1- Stone facade detailing  
DT-2- Metal coping  
DT-3- Dark grey gutter  
DT-4- Dark grey downpipe  
DT-5- Timber  
DT-6- Timber board for sign  
DT-7- Concrete  
DT-8- Metal decorative element  
DT-9- Light grey metal window cill  
DT-10- Dark slate grey metal window cill  
DT-11- Metal louvres  
DT-12- Timber louvres  
DT-13- Multi-coloured water slides  
DT-14- Roller shutter

EQ-1-Flue  
EQ-2- Air handling unit  
EQ-3- PV panels

Notes:  
1. Stonework, render, timber cladding & roof tile patterns indicative - shown for illustrative purpose.



**EPR Architects**  
30 Millbank, London SW1P 4DU  
+44(0)20 7827800  
www.epr.co.uk

Proposed Great Wolf Lodge  
Chesterton, Bicester, Oxfordshire

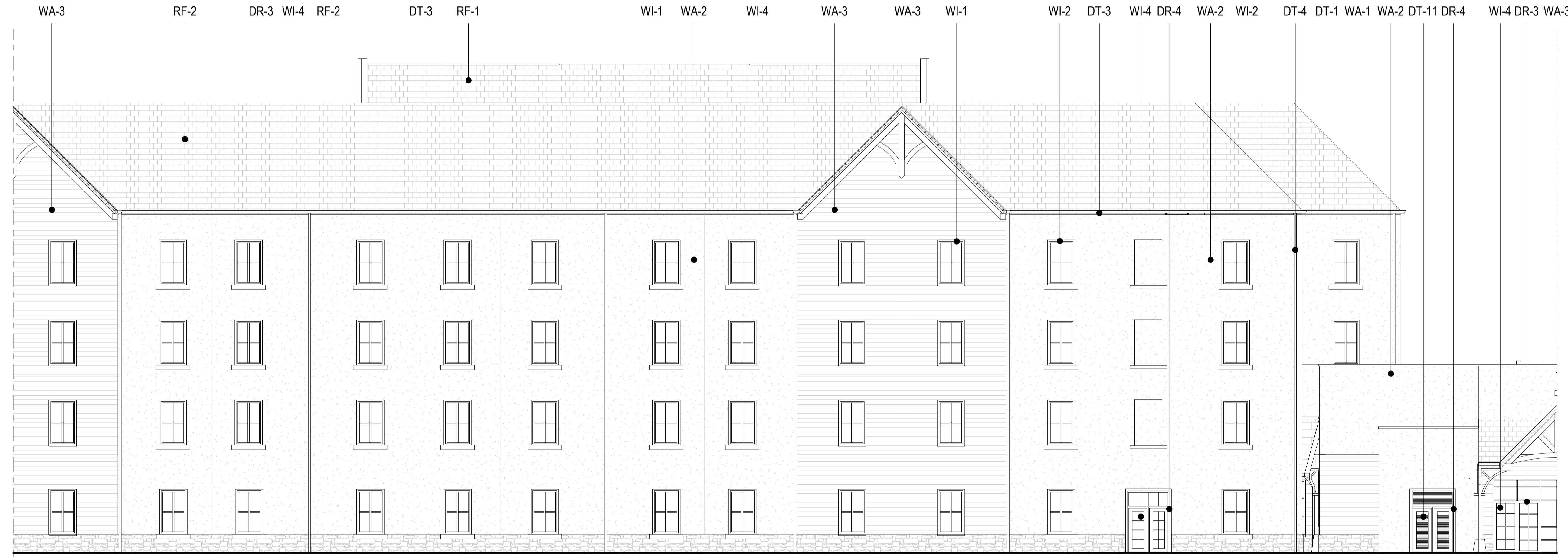
Proposed Elevations - South-West

Scale	Status	Revision
As indicated	Planning	3

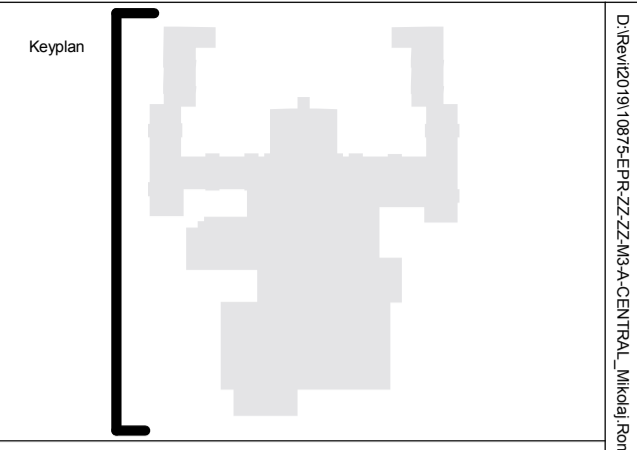
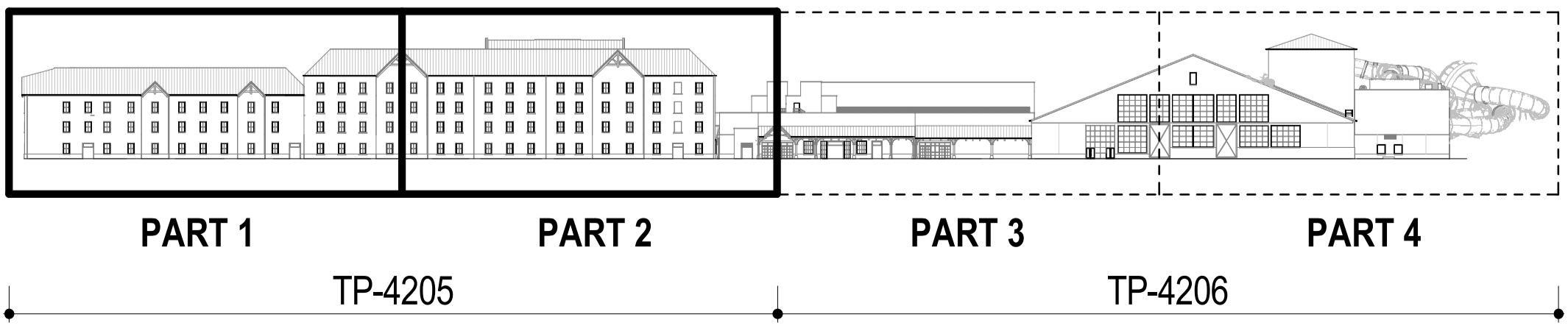
Project Code: 10875 - EPR - 00 - XX - DR - A - TP - 4204



4 NW Elevation - Part 1  
1:100



2 NW Elevation - Part 2  
1:100



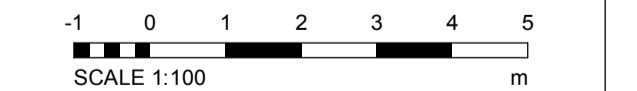
North

Notes:  
 1. Do not scale  
 2. Contractor to check all dimensions and report omissions and errors to the Architect  
 3. EPR Architects accepts no liability for use of this drawing by parties other than the party for whom it was prepared or for purposes other than those for which it was prepared.  
 4. This drawing is issued in dwg/print format as an uncontrolled version to enable the recipient to prepare their own documents/drawings/models for which they are solely responsible. This drawing is based on project information current at the time of issue. EPR Architects Limited accepts no liability for any alterations or additions to or discrepancies arising out of any change to such project information that occurs to the information after it is issued by EPR Architects Limited.  
 5. This drawing does not contain shared coordinates and is not issued for coordination purposes.

No.	Revision	Date	Initial	Chk'd
3	P03 - Planning Issue	08.11.19	LOG	AJ
2	P02 - Preliminary Planning Issue	30.10.19	LOG	AJ
1	P01 - Preliminary Planning Issue	25.10.19	LOG	CT

- Key:**
- WA-1- Stone
  - WA-2- Light cream render
  - WA-3- Timber cladding
  - WA-4- Green coloured metal corrugated cladding
  - WA-5- Concrete panels
  - WA-6- Engineering buff brick
  - RF-1- Dark red roof tiles
  - RF-2- Dark grey roof tiles
  - RF-3- Green corrugated metal cladding
  - WI-1- Dark slate grey metal window frame
  - WI-2- Cream metal window frame
  - WI-3- Light grey metal window frame
  - WI-4- Glass
  - DR-1- Light grey metal door frame
  - DR-2- Grey metal barn doors - fixed
  - DR-3- Dark slate grey door frame
  - DR-4- Cream metal door frame
  - DT-1- Stone facade detailing
  - DT-2- Metal coping
  - DT-3- Dark grey gutter
  - DT-4- Dark grey downpipe
  - DT-5- Timber
  - DT-6- Timber board for sign
  - DT-7- Concrete
  - DT-8- Metal decorative element
  - DT-9- Light grey metal window cill
  - DT-10- Dark slate grey metal window cill
  - DT-11- Metal louvres
  - DT-12- Timber louvres
  - DT-13- Multi-coloured water slides
  - DT-14- Roller shutter
  - EQ-1-Flue
  - EQ-2- Air handling unit
  - EQ-3- PV panels

Notes:  
 1. Stonework, render, timber cladding & roof tile patterns indicative - shown for illustrative purpose.



**EPR Architects**  
 30 Millbank, London SW1P 4DU  
 +44(0)20 7327800  
 www.epr.co.uk

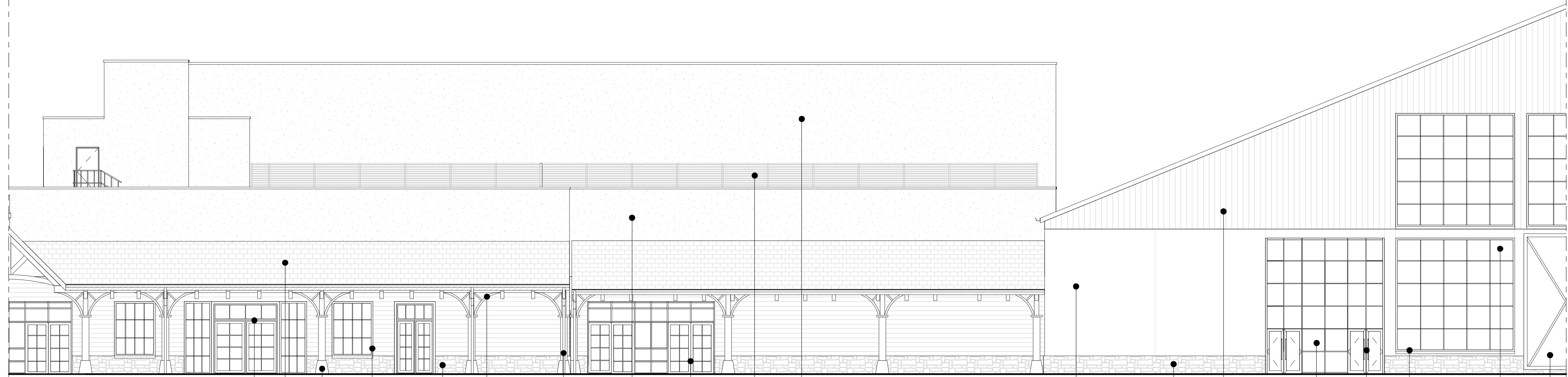
Proposed Great Wolf Lodge  
 Chesterton, Bicester, Oxfordshire

Proposed Elevations - North-West

Scale	Status	Revision
As indicated	Planning	3

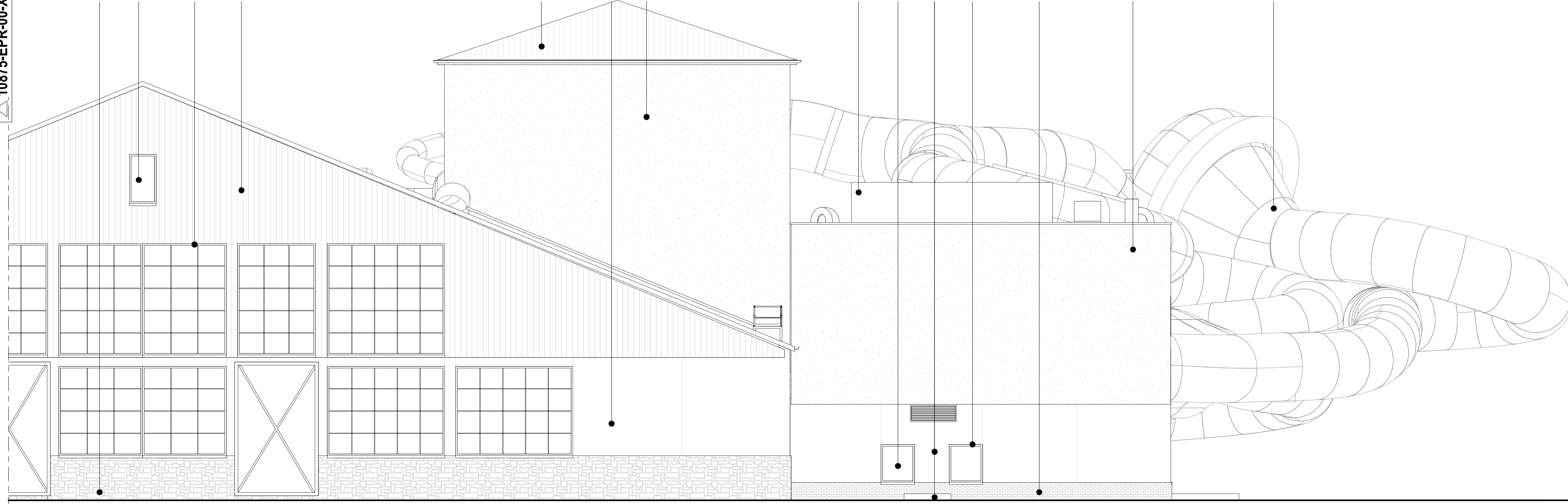
Project Code: 10875 - EPR - 00 - XX - DR - A - TP - 4205

10875-EPR-00-XX-DR-A-TP-4205

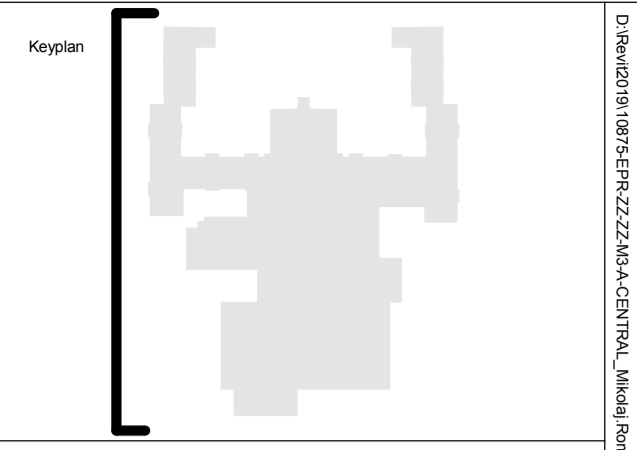
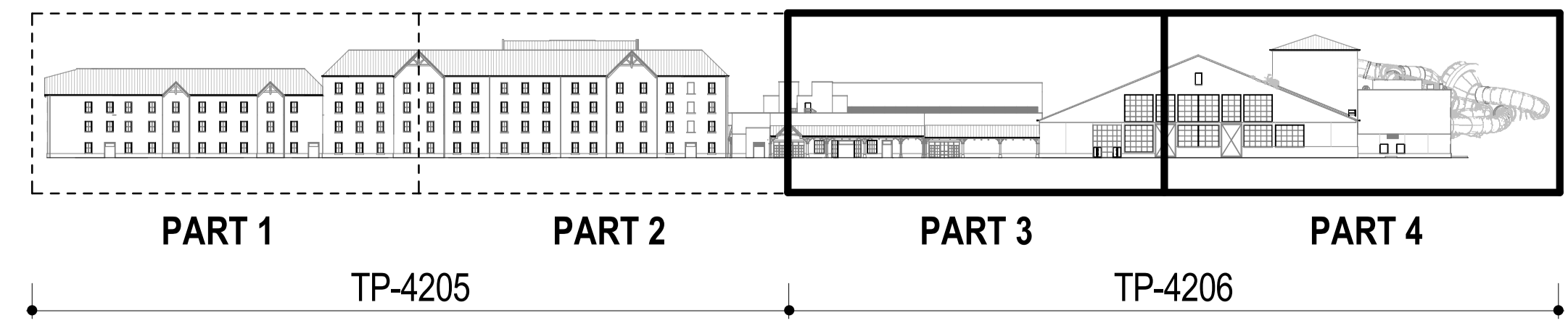


2 NW Elevation - Part 3  
1:100

WA-1 WI-4 WI-3 WA-4 DR-3 RF-2 DT-7 WI-1 WA-1 DT-5 RF-3 DT-5 WA-5 WA-2 DR-3 DT-11 WA-2 EQ-2 WI-4 WA-5 WI-3 WA-6 WA-5 WA-2 WA-1 WA-4 DT-13 WI-4 DR-1 WI-3 WI-4 DR-2



1 NW Elevation - Part 4  
1:100



North

Notes:  
1. Do not scale  
2. Contractor to check all dimensions and report omissions and errors to the Architect  
3. EPR Architects accepts no liability for use of this drawing by parties other than the party for whom it was prepared or for purposes other than those for which it was prepared.  
4. This drawing is issued in dwg/dgn format as an uncontrolled version to enable the recipient to prepare their own documents/drawings/models for which they are solely responsible. This drawing is based on project information current at the time of issue. EPR Architects Limited accepts no liability for any alterations or additions to or discrepancies arising out of any change to such project information that occurs to the information after it is issued by EPR Architects Limited.  
5. This drawing does not contain shared coordinates and is not issued for coordination purposes.

No.	Revision	Date	Initial	Chk'd
3	P03 - Planning Issue	08.11.19	LOG	AJ
2	P02 - Preliminary Planning Issue	26.10.19	LOG	AJ
1	P01 - Preliminary Planning Issue	25.10.19	LOG	CT

Key:  
WA-1- Stone  
WA-2- Light cream render  
WA-3- Timber cladding  
WA-4- Green coloured metal corrugated cladding  
WA-5- Concrete panels  
WA-6- Engineering buff brick

RF-1- Dark red roof tiles  
RF-2- Dark grey roof tiles  
RF-3- Green corrugated metal cladding

WI-1- Dark slate grey metal window frame  
WI-2- Cream metal window frame  
WI-3- Light grey metal window frame  
WI-4- Glass

DR-1- Light grey metal door frame  
DR-2- Grey metal barn doors - fixed  
DR-3- Dark slate grey door frame  
DR-4- Cream metal door frame

DT-1- Stone facade detailing  
DT-2- Metal coping  
DT-3- Dark grey gutter  
DT-4- Dark grey downpipe  
DT-5- Timber  
DT-6- Timber board for sign  
DT-7- Concrete  
DT-8- Metal decorative element  
DT-9- Light grey metal window cill  
DT-10- Dark slate grey metal window cill  
DT-11- Metal louvres  
DT-12- Timber louvres  
DT-13- Multi-coloured water slides  
DT-14- Roller shutter

EQ-1-Flue  
EQ-2- Air handling unit  
EQ-3- PV panels

Notes:  
1. Stonework, render, timber cladding & roof tile patterns indicative - shown for illustrative purpose.

SCALE 1:100

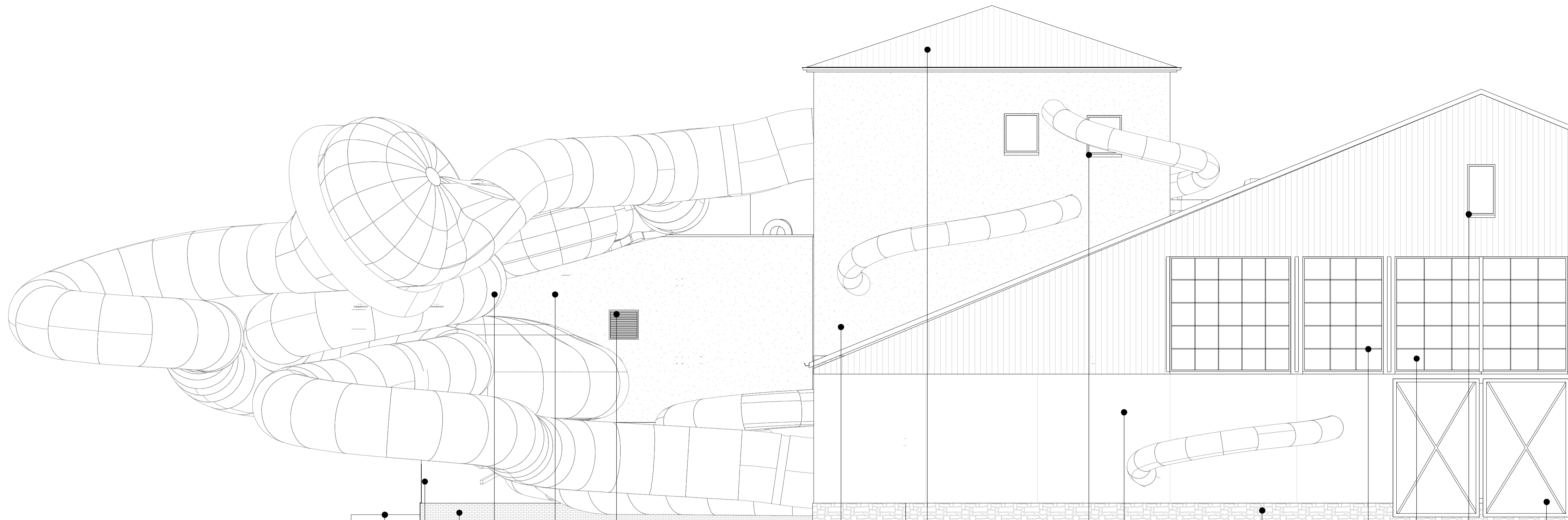
EPR Architects  
30 Millbank, London SW1P 4DU  
+44(0)20 7327800  
www.epr.co.uk

Proposed Great Wolf Lodge  
Chesterton, Bicester, Oxfordshire

Proposed Elevations - North-West

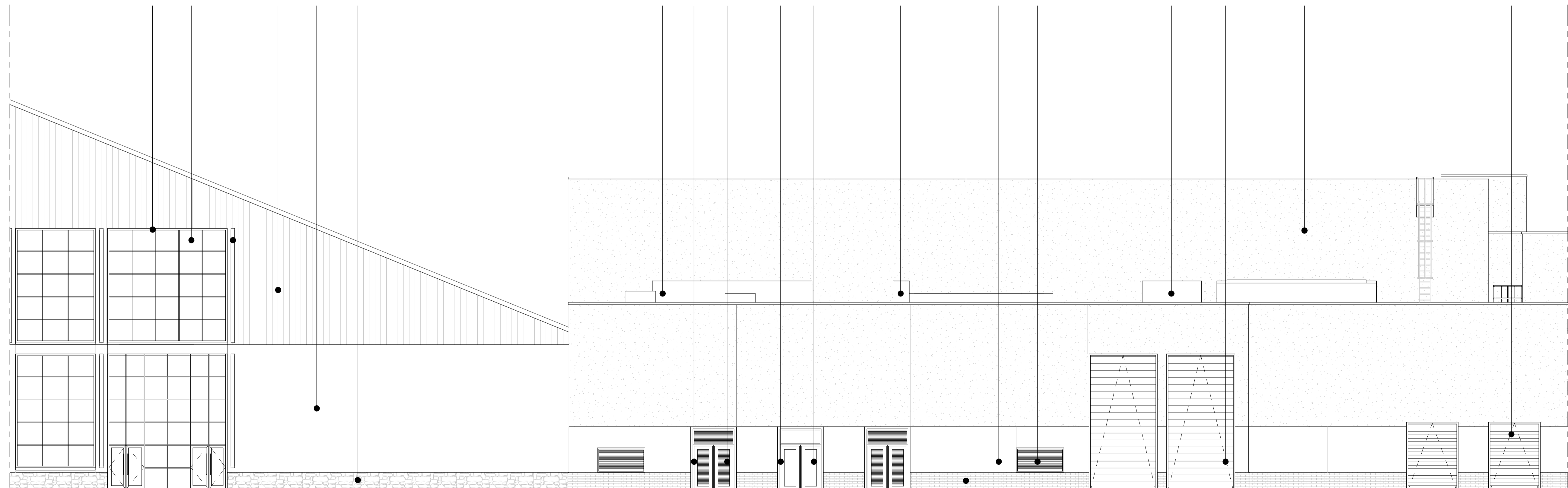
Scale @A1 Status Revision  
As indicated Planning 3

Project Code Originator Zone Level Type Role Class Number  
10875 - EPR - 00 - XX - DR - A - TP - 4206

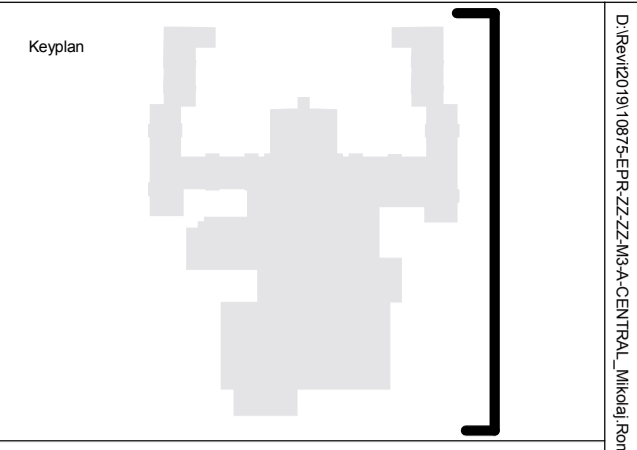
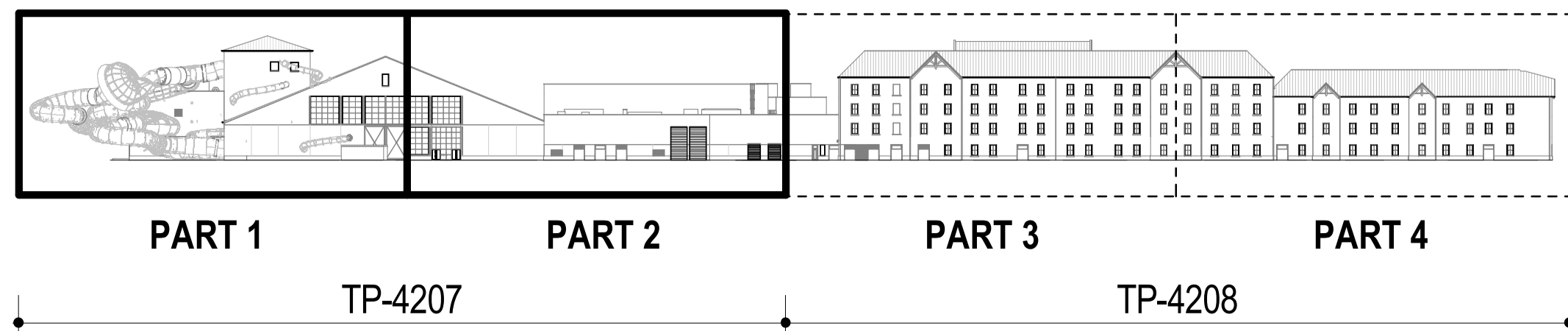


1 SE Elevation - Part 1  
SK-0009 1:100

WI-3 WI-4 DT-11 WA-4 WA-5 WA-6 WA-5 WA-5 WA-6 DT-13 WA-2 DT-11 EQ-2 DR-1 DT-11 DR-1 WI-4 WA-2 EQ-1 RF-3 WA-6 WA-5 DT-11 WI-3 WA-5 EQ-2 DT-14 WA-6 WA-2 WI-3 WI-4 WI-3 DT-14 DR-2



3 SE Elevation - Part 2  
04-0001 1:100



North

Notes:  
1. Do not scale  
2. Contractor to check all dimensions and report omissions and errors to the Architect  
3. EPR Architects accepts no liability for use of this drawing by parties other than the party for whom it was prepared or for purposes other than those for which it was prepared.  
4. This drawing is issued in dwg/print format as an uncontrolled version to enable the recipient to prepare their own documents/drawings/models for which they are solely responsible. This drawing is based on project information current at the time of issue. EPR Architects Limited accepts no liability for any alterations or additions to or discrepancies arising out of any change to such project information that occurs to the information after it is issued by EPR Architects Limited.  
5. This drawing does not contain shared coordinates and is not issued for coordination purposes.

No.	Revision	Date	Initial	Chk'd
3	P03 - Planning Issue	08.11.19	LOG	AJ
2	P02 - Preliminary Planning Issue	26.10.19	LOG	AJ
1	P01 - Preliminary Planning Issue	25.10.19	LOG	CT

Key:  
WA-1- Stone  
WA-2- Light cream render  
WA-3- Timber cladding  
WA-4- Green coloured metal corrugated cladding  
WA-5- Concrete panels  
WA-6- Engineering buff brick

RF-1- Dark red roof tiles  
RF-2- Dark grey roof tiles  
RF-3- Green corrugated metal cladding

WI-1- Dark slate grey metal window frame  
WI-2- Cream metal window frame  
WI-3- Light grey metal window frame  
WI-4- Glass

DR-1- Light grey metal door frame  
DR-2- Grey metal barn doors - fixed  
DR-3- Dark slate grey door frame  
DR-4- Cream metal door frame

DT-1- Stone facade detailing  
DT-2- Metal coping  
DT-3- Dark grey gutter  
DT-4- Dark grey downpipe  
DT-5- Timber  
DT-6- Timber board for sign  
DT-7- Concrete  
DT-8- Metal decorative element  
DT-9- Light grey metal window cill  
DT-10- Dark slate grey metal window cill  
DT-11- Metal louvres  
DT-12- Timber louvres  
DT-13- Multi-coloured water slides  
DT-14- Roller shutter

EQ-1-Flue  
EQ-2- Air handling unit  
EQ-3- PV panels

Notes:  
1. Stonework, render, timber cladding & roof tile patterns indicative - shown for illustrative purpose.

SCALE 1:100

**EPR Architects**  
30 Milbank, London SW1P 4DU  
+44(0)20 7327800  
www.epr.co.uk

Proposed Great Wolf Lodge  
Chesterton, Bicester, Oxfordshire

Proposed Elevations - South-East

Scale	Status	Revision
As indicated	Planning	3

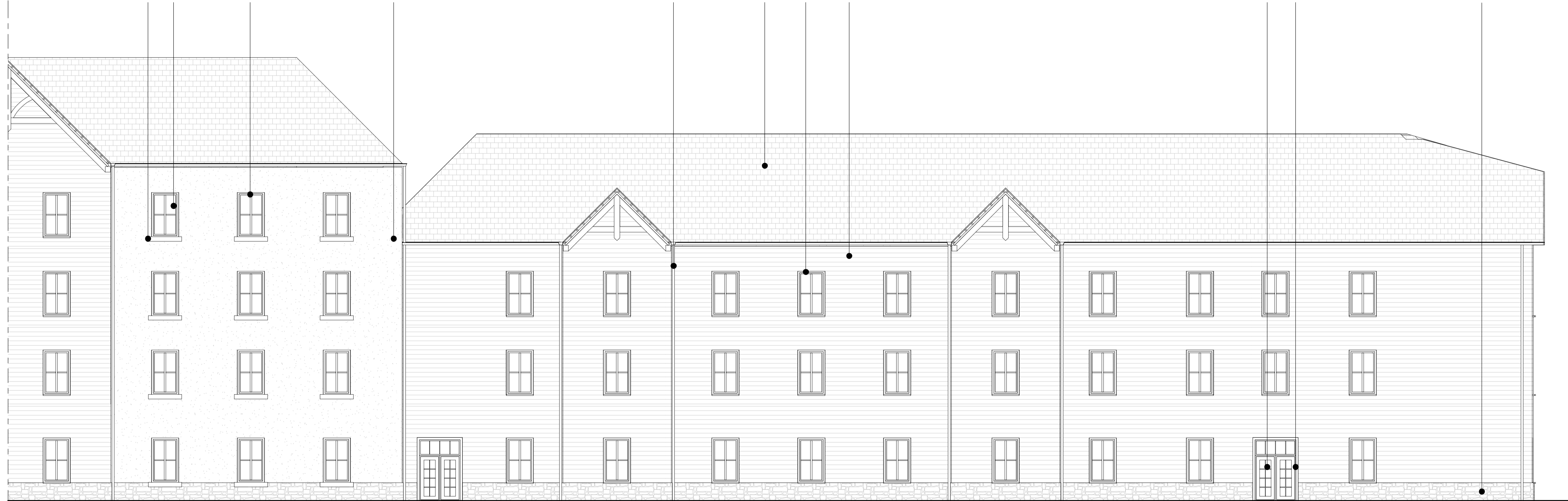
Project Code: 10875 - EPR - 00 - XX - DR - A - TP-4207

WA-5 WA-6 DR-1 WI-3 WI-4 DR-1

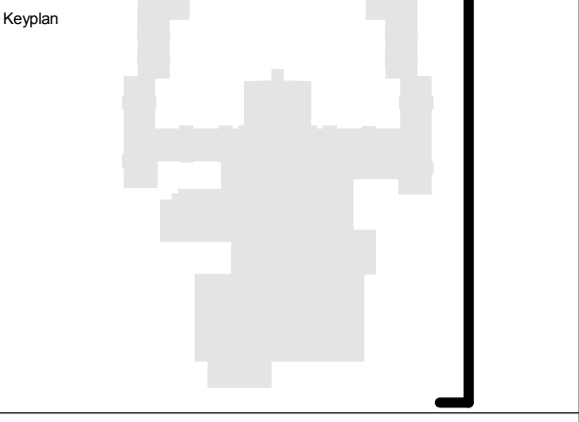
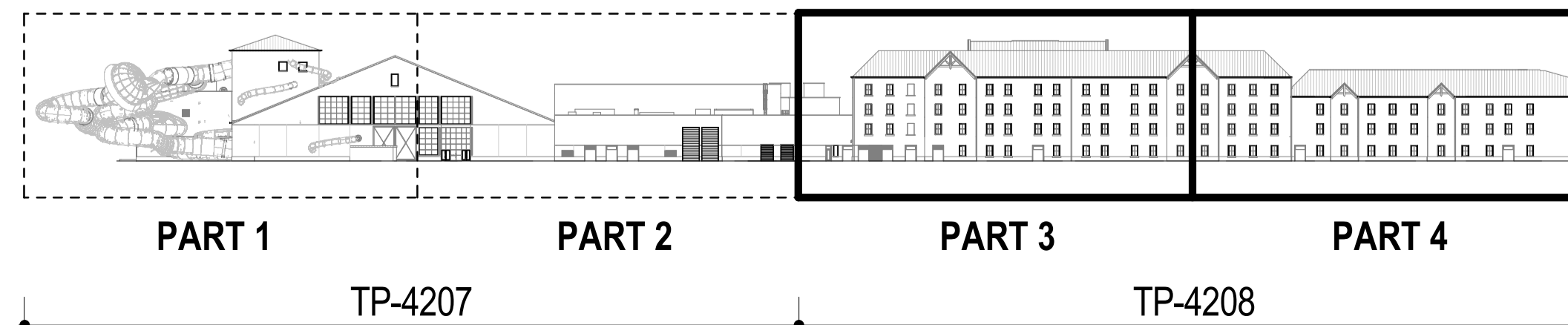


3 SE Elevation - Part 3  
04-0001 1:100

DT-1 WI-4 WA-5 WI-2 DT-11 DT-11 DR-1 WA-2DR-4 WA-2 DR-3 DT-11 WA-3 WI-1 DT-4 DT-3 RF-2 WI-1 WA-3 WA-1 WI-4 DR-4 DT-1 DT-4 RF-1 WA-2 WI-4 WI-4 DR-3 WI-2 RF-2 WA-1



1 SE Elevation - Part 4  
04-0001 1:100



North

Notes:  
1. Do not scale  
2. Contractor to check all dimensions and report omissions and errors to the Architect  
3. EPR Architects accepts no liability for use of this drawing by parties other than the party for whom it was prepared or for purposes other than those for which it was prepared  
4. This drawing is issued in dwg/print format as an uncontrolled version to enable the recipient to prepare their own documents/drawings/models for which they are solely responsible. This drawing is based on project information current at the time of issue. EPR Architects Limited accepts no liability for any alterations or additions to or discrepancies arising out of any change to such project information that occurs to the information after it is issued by EPR Architects Limited.  
5. This drawing does not contain shared coordinates and is not issued for coordination purposes.

No.	Revision	Date	Initial	Chk'd
3	P03 - Planning Issue	08.11.19	LOG	AJ
2	P02 - Preliminary Planning Issue	30.10.19	LOG	AJ
1	P01 - Preliminary Planning Issue	25.10.19	LOG	CT

Key:

- WA-1- Stone
- WA-2- Light cream render
- WA-3- Timber cladding
- WA-4- Green coloured metal corrugated cladding
- WA-5- Concrete panels
- WA-6- Engineering buff brick

- RF-1- Dark red roof tiles
- RF-2- Dark grey roof tiles
- RF-3- Green corrugated metal cladding

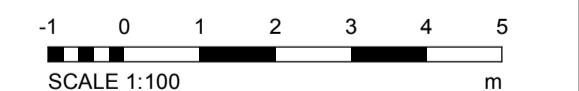
- WI-1- Dark slate grey metal window frame
- WI-2- Cream metal window frame
- WI-3- Light grey metal window frame
- WI-4- Glass

- DR-1- Light grey metal door frame
- DR-2- Grey metal barn doors - fixed
- DR-3- Dark slate grey door frame
- DR-4- Cream metal door frame

- DT-1- Stone facade detailing
- DT-2- Metal coping
- DT-3- Dark grey gutter
- DT-4- Dark grey downpipe
- DT-5- Timber
- DT-6- Timber board for sign
- DT-7- Concrete
- DT-8- Metal decorative element
- DT-9- Light grey metal window cill
- DT-10- Dark slate grey metal window cill
- DT-11- Metal louvres
- DT-12- Timber louvres
- DT-13- Multi-coloured water slides
- DT-14- Roller shutter

- EQ-1-Flue
- EQ-2- Air handling unit
- EQ-3- PV panels

Notes:  
1. Stonework, render, timber cladding & roof tile patterns indicative - shown for illustrative purpose.



**EPR Architects**  
30 Millbank, London SW1P 4DU  
+44(0)20 73827600  
www.epr.co.uk

Proposed Great Wolf Lodge  
Chesterton, Bicester, Oxfordshire

Proposed Elevations - South-East

Scale @A1 Status Revision

As indicated Planning 3

Project Code Originator Zone Level Type Role Class Number  
10875 - EPR - 00 - XX - DR - A - TP-4208

10875-EPR-00-XX-DR-A-TP-4207