

6.1 Appendix 01

Visual Illustrations of the Proposed Development



Illustration of the Great Wolf Resort Entrance, Bicester: Arrival and Entrance (Final Version CGI)



Illustration of Great Wolf Resort, Bicester: View Looking South from the Parkland (Final Version CGI)

6.2 Appendix 02

Selected Hotel Project Examples

Coworth Park, Berkshire

This original Palladian-style Manor House and estate have been extensively restored into a luxurious and energy-efficient hotel and spa. Appointed as lead designer and contract administrator, we placed sustainability at the heart of our design, restoring the whole estate to its former glory and implementing a quintessentially English interior throughout. Surrounded by 240 acres of idyllic parkland on the borders of the historic Windsor Great Park, the five-star hotel and spa dates back to 1776. Integral to our brief was the renovation and conversion of 16 buildings and the construction of a new-build Energy Centre.

The refurbishment and extension of the Manor House and the conversion of the stables and barn provided 70 elegant guest rooms, a fine dining restaurant, a bar, events and conferencing spaces, a luxury eco-spa and the Equestrian Centre and Guards Polo Club. The extensive restoration and landscaping of the historical grounds included the Parterre and the Sunken Garden along with the introduction of new pedestrian routes to improve accessibility.

We worked in collaboration with interior designers Fox Linton Associates to deliver a holistic design with interiors that epitomise subtle luxury with a distinct nod to the equestrian history and landscape of Coworth Park.

Client

The Dorchester Collection

Size

70 guest rooms

Services

Architecture

Collaborators

Fox Linton Associates



Coworth Park, Berkshire



Coworth Park, Berkshire



Coworth Park, Berkshire

Hilton Hotel at The Ageas Bowl, Southampton

The new four-star Hilton Hotel and Spa marked the final stage in the masterplanning of The Ageas Bowl in Hampshire. The site includes a 25,000-seat cricket stadium, a stand, spectator facilities and a golf course, designed with the objective of becoming the first cricket ground to achieve the England and Wales Cricket Board's 'model ground' status. The structures wrap around the stadium bowl and increase the permanent and temporary capacity, bringing business, leisure and hospitality facilities to the ground. Flexibility is fundamental to the design, with pitch-facing guest rooms converting to hospitality suites on major match days and the central function room transforming into the centre.

The design of this ground-breaking four-star hotel and sports stadium positions The Ageas Bowl as a unique, year-round sporting and leisure destination with iconic structures set against a stunning landscaped backdrop.

Client

Southampton Developments Ltd

Services

Masterplanning
Architecture

Size

171 guest rooms

Collaborators

Falconer Chester Hall



Hilton Hotel at The Ageas Bowl, Southampton



Hilton Hotel at The Ageas Bowl, Southampton



Hilton Hotel at The Ageas Bowl, Southampton

The Belfry Resort, North Warwickshire

The Belfry is an award-winning golf resort and hotel located in Wishaw, Warwickshire, best known for having hosted the Ryder Cup four times. EPR has been commissioned by an affiliate of KSL Capital Partners to expand the existing resort.

The project involves the creation of new-build facilities including a 600-person grand ballroom overlooking the signature tenth hole of The Brabazon golf course, 149 guest rooms also overlooking the golf course and a leisure building featuring a swimming pool and fitness facilities. The ballroom will cater to banquet, social and media events such as celebrity golf tournaments.

Due to The Belfry's global reputation, significance to the regional economy and the fact that it is located in a greenbelt area, a 'very special circumstances' test must be met to achieve planning approval. Consequently, the design has been developed to have a minimal impact on the landscape and utilises natural materials in order to blend in with its surroundings.

Client

KSL Capital Partners

Services

Architecture

Size

149 guest rooms

GIA 12,000m²



The Belfry Resort, North Warwickshire



The Belfry Resort, North Warwickshire



The Belfry Resort, North Warwickshire

6.3 Appendix 03

Figure Illustrations



Figure 01: Preliminary sketch study option for the proposed site layout prepared by Gensler Architects.

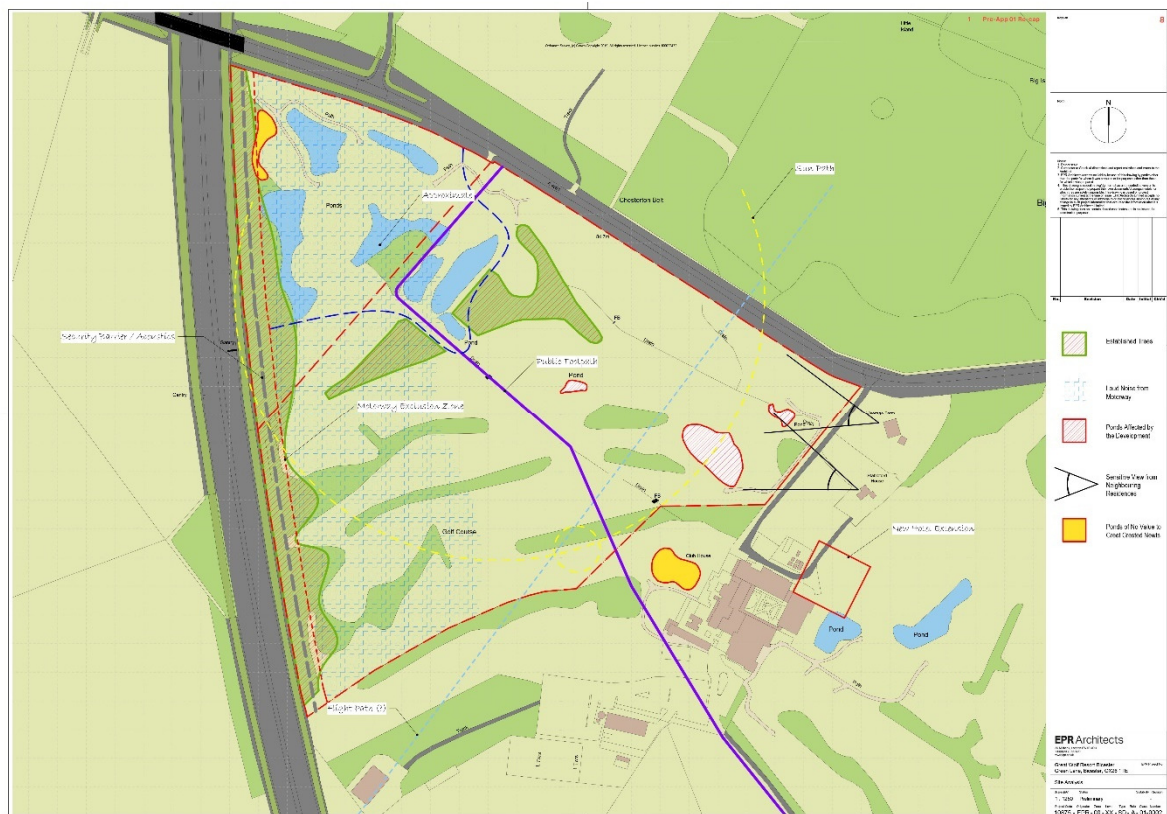


Figure 02: Site Constraints Plan. Taken from page 8 of pre-app 2. Drawing number: 10875 XX SD 01-0002



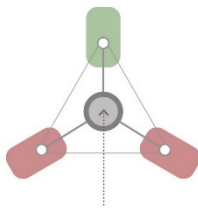
1. Layering

The Great Wolf Lodge is composed of three complementary layers: an outer ring of natural woodland conceals and protects the inner landscape, which surrounds the lodge at its centre.



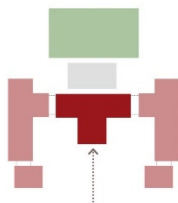
2. Perceived Scale & Massing

The Great Wolf Lodge addresses its perceived scale and massing through design and materiality to stand comfortably in its expansive landscape



3. Circulation Around Central Hub

The Great Wolf Lodge revolves around a central hub connecting the three components. From the arrival space the guest moves through the lobby and into the guestroom wings or through the Family Entertainment Centre (FEC) and into the Water Park



4. Three Components and Hierarchy

The Great Wolf Lodge has a hierarchy between the three components where the FEC is less prominent than the hotel and Water Park. The guestroom wings have a hierarchy where the Porte Cochere arrival space is central, branching out to the guestroom wings in the north and south. The hierarchy is reflected in its materiality

Figure 03: Design Developments of Layering. Taken from page 29 of the DAS report



1. Option One (Chosen)

The building further divides into a lobby connecting two guestroom wings, making up the front of the resort. The Water Park is on the boundary nearest to the M40 as it is the least noise sensitive part of the building and the Conference Centre is positioned to open up to the outdoor amenities.



1. Option Two

Service route is accessed through a shared entry point with the guest access and avoids existing ponds. Emergency vehicle route continues wrapping around the resort and exiting at its original entry point.

Figure 04: Initial Design process determining the proposed site layout arrangement. Taken from page 28 of the DAS report.

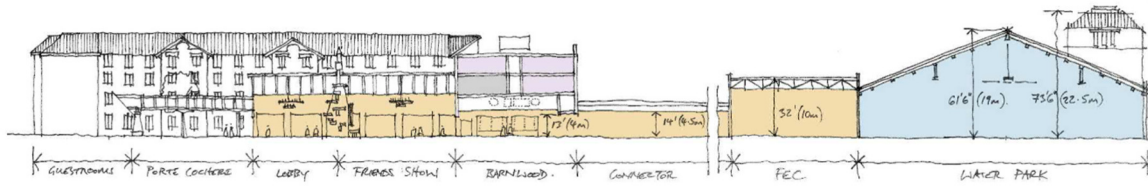


Figure 05: Sketch Section showing the massing break down of the building. Taken from page 32 of the Das report



Figure 06: Early Aerial View of Great Wolf Lodge included in Pre-App 01 and the DAS. Taken from page 31 of the DAS report.

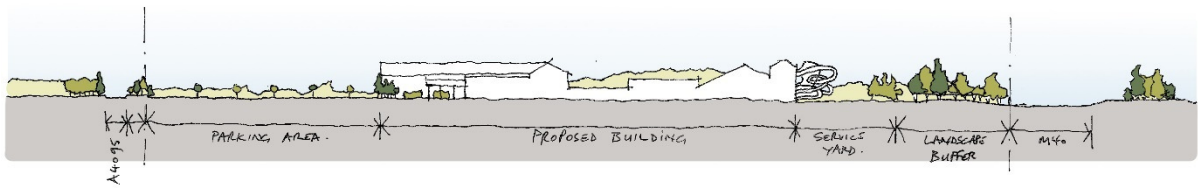


Figure 07: Sketch section through the proposed building and an aerial artistic representation of the overall emerging design. Taken from page 32 of the DAS report

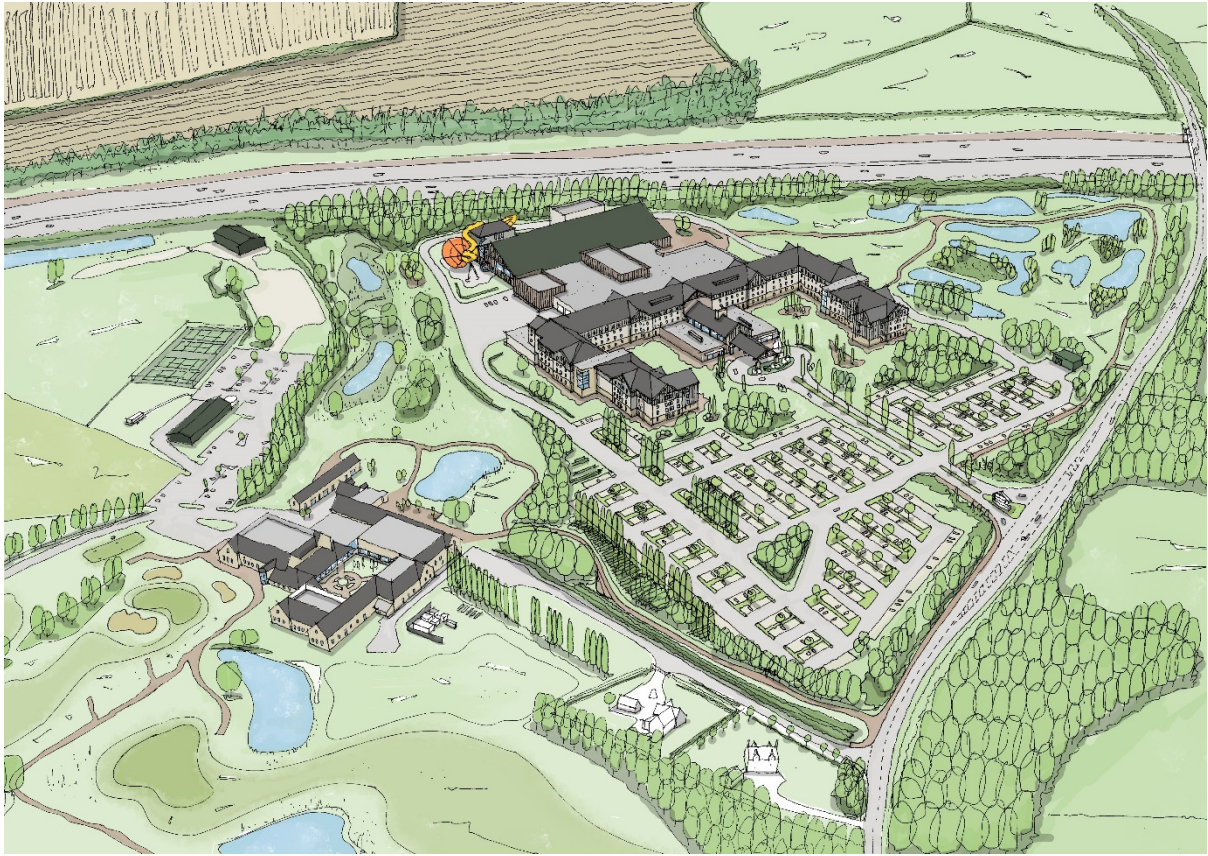


Figure 08: Updated Aerial site proposal issued in pre-app 3 and included with the DAS report. Taken from page 33 of the DAS report



Figure 09: Updated aerial view and site plan issued in Pre-App 4 and included with the DAS report. Taken from page 34 of the DAS



Figure 10: EPR's Car Park Design issued in Pre-App 4 illustrations show different car park layouts responding to locations of existing trees. Taken from pages 24 and 26 of Pre-App 4



Figure 11: Examples of windows used in EPR's design that directly reference the fine stone detailing of the local area. Taken from page 36 of the DAS



Figure 12: Example of existing Great Wolf Lodge reception area of completed example Great Wolf Lodge, LaGrange, Atlanta



Figure 13: Existing Great Wolf Lodge 'Kids Cabins' of completed example Great Wolf Lodge, LaGrange, Atlanta



Figure 14: Woodland Walk of completed example Great Wolf Lodge, LaGrange, Atlanta



Figure 15: Main activity hall in the FEC of completed example Great Wolf Lodge, LaGrange, Atlanta



Figure 16: Photo of other themed content around the FEC of completed example Great Wolf Lodge, LaGrange, Atlanta