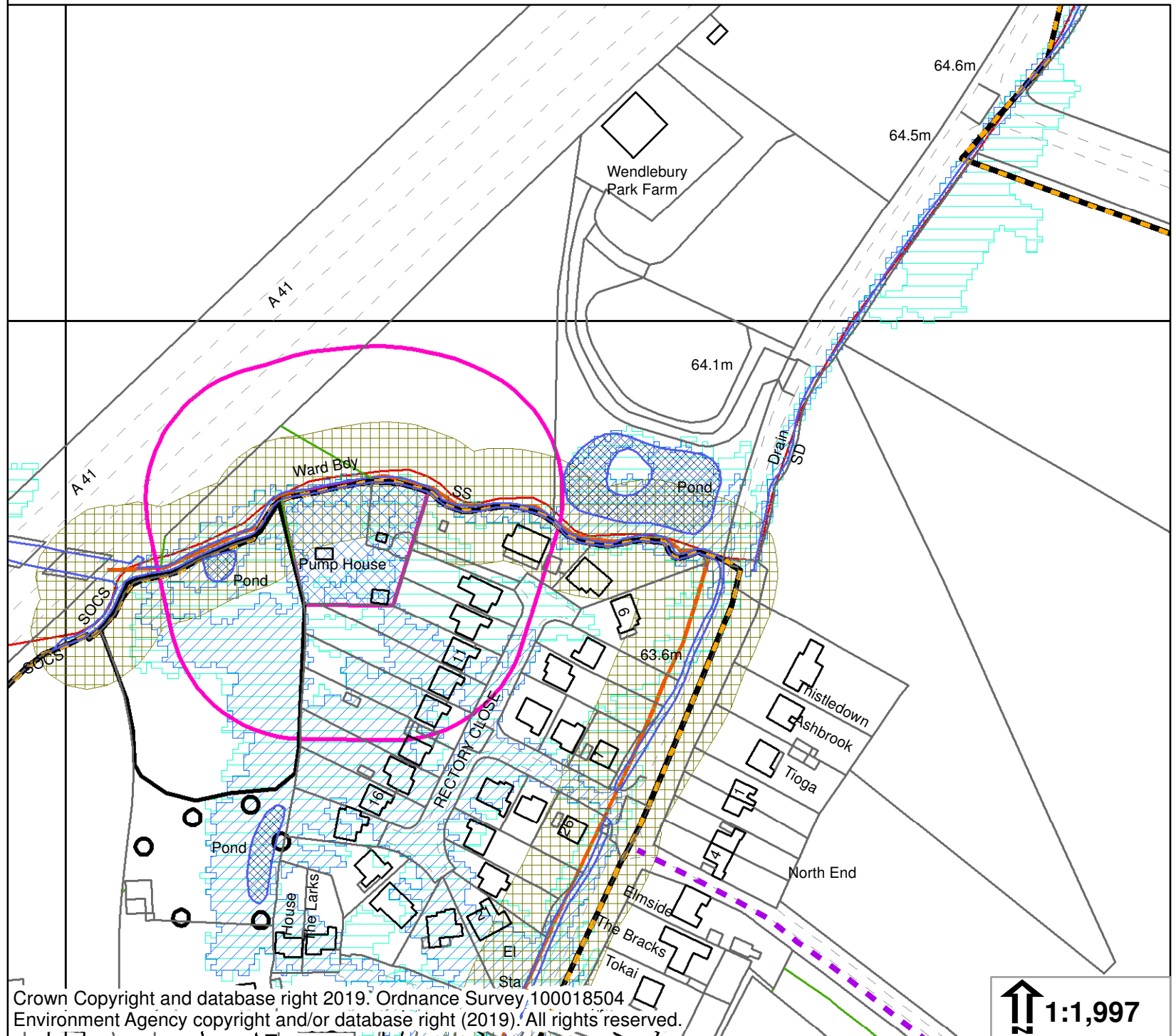


- STATUS**
- Public Footpath
- Public Bridleway
- Restricted Byway
- Byway Open to all Traffic
- SWIFT_RECORDS
- PROTECTED_AND_NOTABLE_SPECIES
- PROTECTED_SPECIES_BUFFER
- ROAD_VERGE_NATURE_RESERVES
- EIL_TEXT
- ASSETS OF COMMUNITY VALUE
- Area TPOs
- Group TPOs
- TPO Trees
- Woodland TPOs
- LISTED BUILDINGS**
- GRADE**
- I*
- II*
- II
- DL
- CURTILAGE LISTING
- LOCALLY_LISTED_BUILDINGS
- ARTICLE_4
- ARCHAEOLOGICAL_CONSTRAINT_PRIORITY_AREAS
- SCHEDULED_ANCIENT_MONUMENT
- EIL_REGIONS
- PONDS_MAPPING (INCLUDING GREAT CRESTED NEWTS)
- NERC ACT S41 Habitats (Previously UKBAP PRIORITY HABITATS)
- REGISTERED_COMMON_LAND
- SPECIAL_SITES_OF_SCIENTIFIC_INTEREST
- SPECIAL_AREAS_OF_CONSERVATION
- ANCIENT_WOODLAND
- CONSERVATION_AREAS
- DISTRICT_WILDLIFE_SITES
- LOCAL_WILDLIFE_SITES
- PROPOSED_NEW_LWS_AND_EXTENSIONS_LWS
- LOCAL_NATURE_RESERVE
- PARKS_AND_GARDENS
- BATTLEFIELDS
- AREAS_OF_OUTSTANDING_NATURAL_BEAUTY
- RAILWAY_TUNNEL
- HIGH_PRESSURE_GAS_PIPELINES
- LGS_POINTS
- LGS_POLYGONS
- POTENTIALLY CONTAMINATED LAND**
- Buffer Distance
- 0
- 50
- EA LANDFILL_SITES**
- Buffer Distance
- 0
- 250
- HISTORIC_LANDFILL_SITES_10K
- BANK_TOP_WIDTH_PLANNING
- CRT_HOUSEHOLD_AND_MINOR_SCALE_DEVELOPMENTS
- CRT_EIA_AND_MAJOR_SCALE_DEVELOPMENTS
- Flood Zone 3
- Flood Zone 2
- NAT_FSA
- NAT_DEFENCES
- NAT_AREAS_BENEFIT
- NAT_CENTRELINES
- HS2 SAFEGUARDING_ZONES**
- Type**
- Safeguarding Limits
- Sub-Surface
- Surface
- NATURALLY_ELEVATED_ARSENIC
- GREEN_BELT
- CONSERVATION_TARGET_AREAS
- CONSERVATION_TARGET_AREAS_NEW_EXTENSIONS_MODIFICATIONS
- MINERAL_CONSULTATION_AREAS
- MINERAL_CONSULTATION_REGION
- Neighbourhood Development Plans**
- Details**
- Neighbourhood Plan Area
- Important Amenity Green Spaces
- Local Green Spaces
- NATIONAL_GRID_REFERENCE
- WARDS
- PARISHES



Crown Copyright and database right 2019. Ordnance Survey 100018504
 Environment Agency copyright and/or database right (2019). All rights reserved.

↑ 1:1,997