



**Wykham Park Farm, Banbury**  
**Travel Plan**

January 2013



## Document Control

Project: Land at Wykham Park Farm, Banbury  
Client: Gallagher Estates  
Job Number: A053410-1  
File Origin: N:\Projects\A053001 - A053500\A053410-1 Banbury\Correspondence\Reports\Travel Plan

### Document Checking:

Prepared by:	Amy Waites	Signed:	
--------------	------------	---------	--

Checked by:	Matt Grist	Signed:	
-------------	------------	---------	--

Verified by:	Matt Grist	Signed:	
--------------	------------	---------	--

Issue	Date	Status
1	15.11.2012	Issue 01
2	13.12.2012	Issue 02
3	09.01.2013	Issue 03



## Contents Page

### MISSION STATEMENT

1.0	Introduction.....	1
2.0	Site Description and Proposed Development .....	4
3.0	Existing Sustainable Travel Options .....	7
4.0	Objectives and Targets.....	14
5.0	Travel Plan Strategy .....	15
6.0	Sustainable Transport Measures.....	19
7.0	Monitoring and Review .....	20
8.0	Summary.....	25



## **Table Contents**

**Table 3.1 Walking and Cycling Time to Key Services and Facilities ..... 10**

**Table 2.2 Bus Services and Frequencies ..... 12**

## **Appendices**

**Appendix A - Bus Network Plan & Timetables**

**Appendix B – Census 2001 Data**





## MISSION STATEMENT

*Gallagher Estates are committed to sustainable development and promoting green travel choices. We have produced the following Travel Plan for the proposed residential and employment development at Wykham Park Farm, Banbury to meet these aims.*

*In order for the Travel Plan to be a success, the commitment of all residents and employees is required. If everybody makes a small contribution, even just changing travel habits once a week, it can make a big difference.*

*We encourage all occupiers of the development to try and make an effort and choose green travel modes wherever practical. Together we can all make a valuable contribution to reducing congestion and pollution, improving the local environment and ensuring a better quality of life for everybody.*

*Andy Hawkes*

*Gallagher Estates*



## 1.0 Introduction

### 1.1 Background

1.1.1 SBA has been appointed to develop a Travel Plan for a residential and employment development on land at Wykham Park Farm, Banbury.

1.1.2 This Travel Plan should be read in conjunction with the Transport Assessment and Design and Access Statement that has been submitted as part of the planning application package for the proposed development.

### 1.2 Travel Plan Scope

1.2.1 This Travel Plan has been prepared in line with the Department for Transport guidance on residential and workplace travel plans.

1.2.2 The primary school element of the development will produce its own School Travel Plan. The School Travel Plan will be submitted alongside the detailed planning application for the school and approved by Oxfordshire County Council within 12 months of the opening of the school to enable input from all stakeholders i.e. pupils, parents, teachers, school governors.

### 1.3 This document

1.3.1 The measures identified within this Travel Plan will assist in promoting healthier and more environmentally friendly travel to and from the proposed development in line with local, regional and national policies.

- Section 2 - describes the site and the development proposal;
- Section 3 - outlines the accessibility of the site and its location in relation to local services and facilities;
- Section 4 - sets out the objectives and targets of the Travel Plan;
- Section 5 - details the strategy for promoting the Travel Plan to ensure its success;
- Section 6 - provides information on the sustainable transport measures which Gallagher Estates have committed to. This section also contains details of possible future



measures which could be implemented, depending on the success of the Travel Plan;

- Section 7 - outlines the monitoring and review programme that will ensure the Travel Plans continue to progress;
- Section 8 - contains a summary; and
- Section 9 - sets out an Action Plan for the Travel Plan.



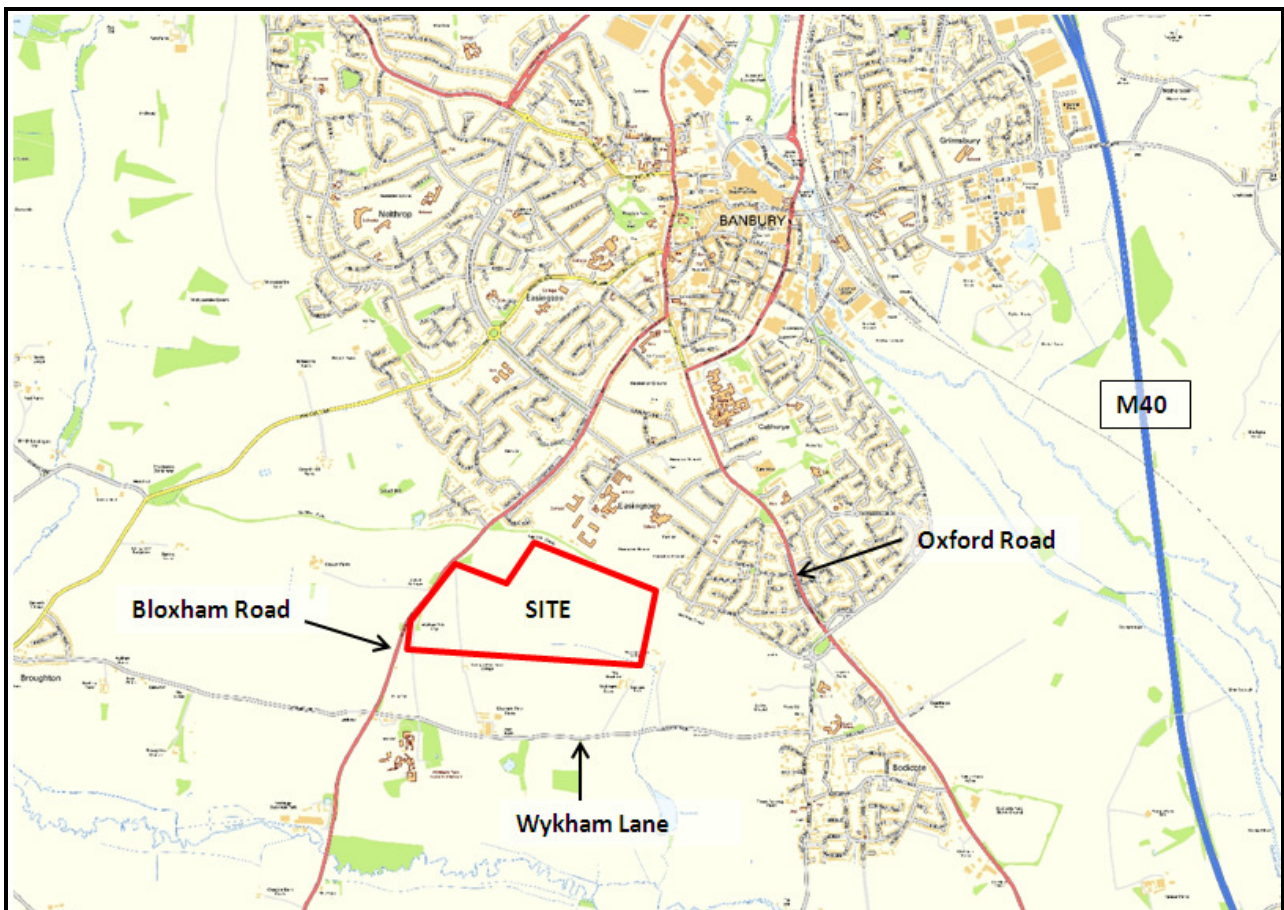


## 2.0 Site Description and Proposed Development

### 2.1 Site Location

2.1.1 The site is located on the southern boundary of Banbury's existing urban area and lies within the Banbury Easington Ward approximately 2km south of Banbury's main centre. The location of the site is shown in **Figure 2.1**.

**Figure 2.1 - Site Location**



### 2.2 Proposed Development

2.2.1 The development schedule of the proposed development is:

- Up to 1100 dwellings (market and affordable);
- Up to 5000m<sup>2</sup> of employment uses;



Travel Plan

- A community primary school and
- A local centre with retail and small local business opportunities

2.2.2 The proposed primary school places will be filled with pupils who will live in the proposed development.

2.2.3 The primary school will also provide community facilities for the residents within the proposed housing development through the hire of its halls, classrooms and sports pitch.

2.2.4 The local centre is to provide local facilities for the future residents of Wykham Park Farm and will be small in nature and therefore will not draw traffic from outside of the development.

2.2.5 A Concept Site Plan is shown in **Figure 2.2**.

**Figure 2.2 – Concept Site Plan**



2.2.6 Two points of access into the development from Bloxham Road are proposed to be taken from a newly constructed 52 metre 4 armed roundabout.

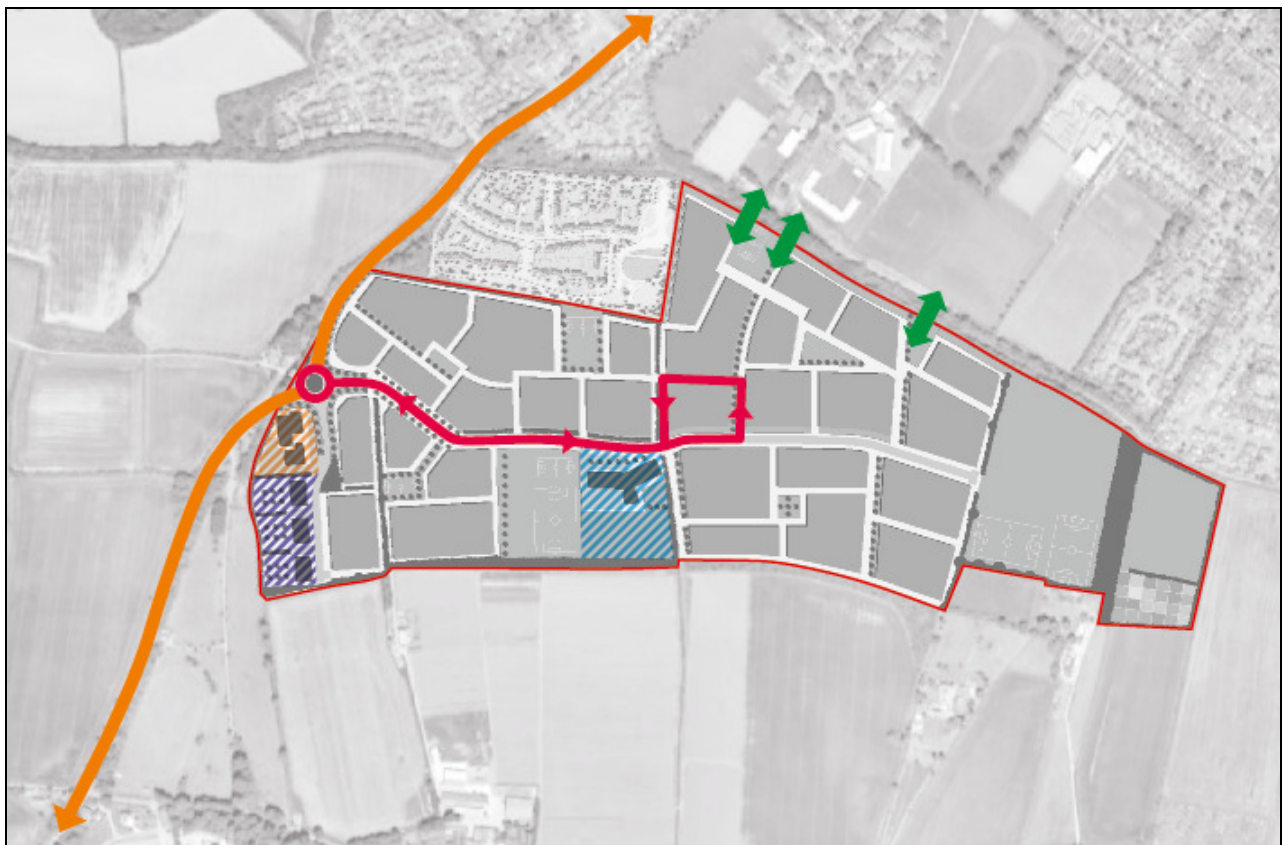
2.2.7 The existing speed limit change on the Bloxham Road entry to Banbury will be moved to the south of Wykham Lane the proposed roundabout pronouncing arrival to the new Banbury built-up area.



Travel Plan

- 2.2.8 A footway/cycleway will be constructed alongside the re-aligned Bloxham Road to the north of the proposed roundabout. This footway/cycleway will extend to the north providing a safe and convenient route to reach the existing footway provision on the eastern side of Bloxham Road. A further link into this new footpath will be provided in the north-western corner of the site.
- 2.2.9 Three shared use cycleway links will be provided allowing access for pedestrian and cyclists onto the Saltway Cycleway and enabling journeys to Easington, Sainsburys and further afield on foot and by bicycle.
- 2.2.10 The proposal will seek to introduce the diversion of service 488 / 489 into the site ensuring that all dwellings are within 400 metres of a bus stop in accordance with government guidelines. The layout of the site will enable the bus to undertake a circulatory route returning to Bloxham Road as shown in **Figure 2.3**.

**Figure 2.3 Proposal for Bus Service**



- 2.2.11 This bus service will enable access to the railway station. Additionally, the footpath and cycle links detailed above will serve to provide access to the railway station by walking and cycling.







### 3.0 Existing Sustainable Travel Options

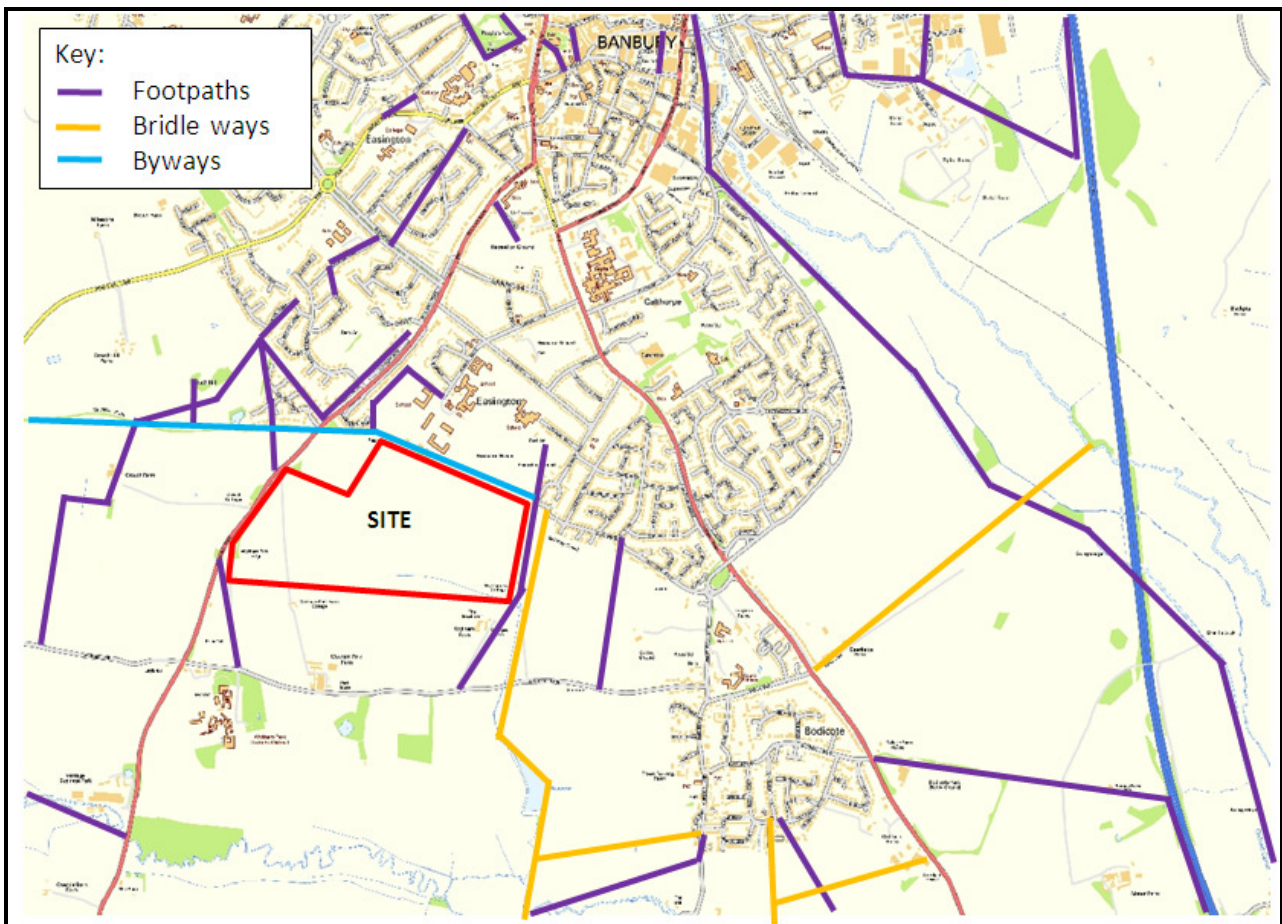
3.1.1 The site is well located in terms of sustainable travel options.

### 3.2 Pedestrian Facilities

3.2.1 Between the site access and the built up area a one metre footway is present on the western side of Bloxham Road (recorded as Public Right of Way (PRoW) 120/33); thereafter the footpath widens to a standard two metres with street lighting present.

3.2.2 Also at this location the footway meets the Salt Way Cycle Route (PRoW 120/26/39/41/42) which provides an east / west route. To the east PRoW 120/45 heads north providing a route to Oxford Road (A4260) where the Sainsbury's supermarket is located. The PRoW network is shown in **Figure 3.1.**

**Figure 3.1 – Public Rights of Way Route Plan**





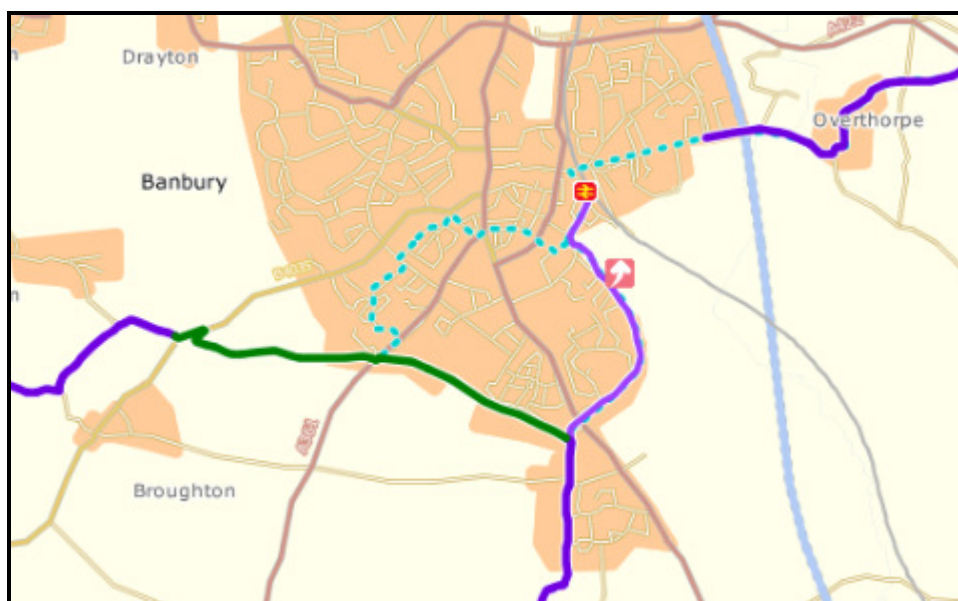
## Travel Plan

- 3.2.3 Between the site access and the built up area a one metre footway is present on the western side of Bloxham Road (recorded as Public Right of Way (PRoW) 120/33); thereafter the footpath widens to a standard two metres with street lighting present.
- 3.2.4 Dropped kerbs and a pedestrian refuge are provided on Bloxham Road in the vicinity of the Salt Way Cycle route and the Browning Road junction. A Zebra crossing facility with refuge is provided between Springfield Avenue and Queensway and a Pelican crossing is provided in the vicinity of the Harriers View junction.
- 3.2.5 Pedestrian phases are provided within the signalised junctions on Oxford Road at the Hightown Road, Horton View and St Bar Street junctions. Dropped kerbs and a pedestrian refuge are provided within the signalised junction of Oxford Road / Upper Windsor Street.

### 3.3 Cycle Facilities

- 3.3.1 The Salt Way Cycle Route, which is traffic free and lies adjacent to the northern boundary of the site forms part of National Cycle Route 5. This route connects with villages such as Chipping Campden to the west, Bodicote to the east and Bloxham to the south.
- 3.3.2 To the east, a local on-road route is promoted along Bankside providing access to the town centre and the railway station. These routes are shown in **Figure 3.2**.

**Figure 3.2 – Cycle Network Plan**

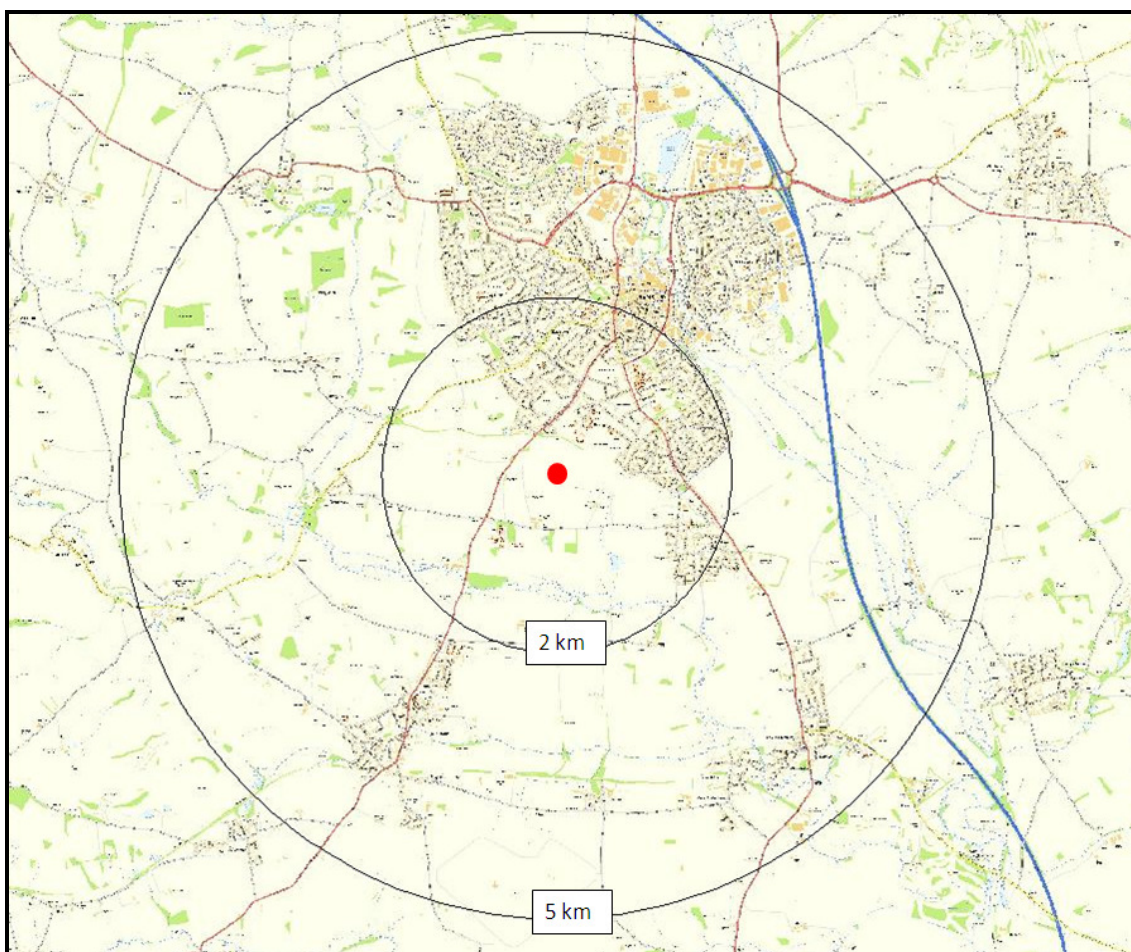




### 3.4 Distance to Local Services and Facilities

3.4.1 It is widely accepted that walking and cycling are the most important modes of travel at the local level and offer the greatest potential to replace short car trips, particularly under 2 kilometres for walking and under 5 kilometres for cycling. Figure 3.3 shows the 2km and 5km walking and cycling isochrones.

**Figure 3.3 – 2 and 5 km Isochrones**



3.4.2 The isochrones show in a basic format that the southern half of Banbury is within walking distance of the site and that the whole of Banbury is within cycling distance of the site.

3.4.3 When assessing the accessibility of a site for pedestrians, and the proximity of local facilities, an average walking speed of 1.4 m/s can be assumed, which equates to approximately 400 metres in 5 minutes, or 3 mph. (Source: The Institution of Highway and Transportation (IHT) publication





## Travel Plan

'Guidelines for Providing Journeys on Foot, 2000'). An average cycling speed of 4.2 metres/second can be assumed when assessing accessibility.

3.4.4 Key local facilities and services within a 2km radius of the site have been interrogated using the Promap database. The report generates the nearest 500 facilities and services to the site. Whilst Promap measures distances as the crow flies the locations identified have been used and then the distance measured using actual walking / cycling distances from the centre of the site.

3.4.5 The distance from the centre of the site to the nearest key facilities and services are shown in **Table 3.1** below along with the time taken to travel on foot and by bicycle.

**Table 3.1 Walking and Cycling Time to Key Services and Facilities**

Service / Facility	Postcode	Distance (metres)	Walking Time (mins)	Cycling Time (mins)
Pub	OX16 9JU	1305	15½	5
Farm Shop	OX16 9UP	1425	17	5½
Hairdressers	OX16 9EP	1630	19½	6½
Church	OX16 9LB	1655	19½	6½
Convenience Store	OX16 9HR	1725	20½	7
Post Office	OX16 9HW	1765	21	7
Tennis Courts	OX16 9HR	1785	21	7
Bowling Green	OX16 9HR	1885	22½	7½
Catholic Primary School	OX16 9JW	1895	22½	7½
Nursery School	OX16 9HY	1895	22½	7½
Secondary School	OX16 9HY	1895	22½	7½
Playing Field	OX16	1895	22½	7½
Primary School	OX16 9YA	1930	23	7½
Community Centre	OX16 9YA	1930	23	7½
Pharmacy	OX16 9XA	1960	23½	8
Supermarket	OX16 9XA	1960	23½	8
Doctor	OX16 9AD	2005	24	8
Hospital inc A&E	OX16 9AL	2055	24½	8
Cricket Ground	OX15	2155		8½
Vets	OX16 9SA	2290		9



Travel Plan

Dentist	OX16 9RZ	2380		9½
Sports Hall	OX16 0HS	2795		11
Library	OX16 0AT	2795		11
Opticians	OX16 9AA	2795		11
Snooker Hall	OX16 9AA	2960		11½
Cinema	OX16 0AH	3125		12½
Bookmakers	OX16 5EG	3205		12½
Town Centre		3345		13½
Train Station		3400		13½
Bus Station		3470		14
Swimming Pool	OX16 2BW	3745		15
Leisure centre	OX16 2BW	3745		15

3.4.6 The results show that there are a wide range of local services and facilities within walking and cycling distance of the development site ensuring that future residents are able to undertake their everyday requirements by sustainable modes of transport.

3.4.7 Additionally, the main employment areas in Banbury which lie to the north and north-east of the town are located at a cycling distance of 5.5km from the site. Future residents working at these sites would be able to undertake their journey to work by bicycle.

### 3.5 Public Transport

#### 3.5.1 Bus

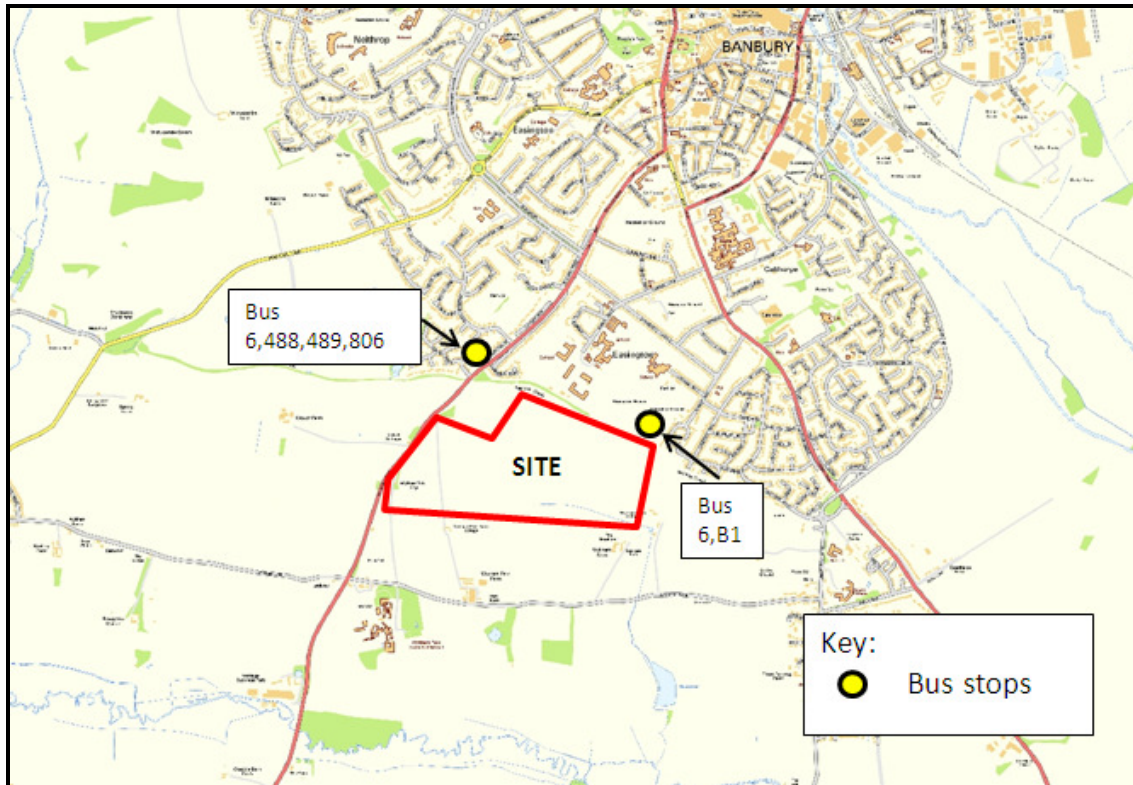
3.5.2 The Banbury Bus Network Plan is attached in **Appendix A**.

3.5.3 The nearest bus stops to the development give access to Services 488/489 which runs along Bloxham Road and Service B1 which runs along Springfield Avenue and Timms Road within the residential estate to the north-east of the development site.

3.5.4 **Figure 3.4** shows the locations of the bus stops in relation to the development site.



**Figure 3.4 – Location of Bus Stops**



3.5.5 Details of the services are shown in **Table 3.2**.

**Table 2.2 Bus Services and Frequencies**

Service	Route	Frequency		
		Mon - Fri	Sat	Sun
488 / 489	Banbury – Chipping Norton	Hourly	Hourly	-
B1	Banbury – Easington	Half hourly	Half Hourly	Bi-Hourly

3.5.6 In addition to these services, there are a number of services which run from Banbury Centre to the following destinations – Stratford-upon-Avon, Shipston-on-Stour, Chipping Norton, Oxford, Brackley and Eydon enabling commuting and leisure journeys to be undertaken by bus.

3.5.7 Bus timetables are attached in **Appendix A**.

3.5.8 National Express run coaches from Banbury to Gatwick, Heathrow, Birmingham, Wolverhampton and Oxford.



## Travel Plan

### 3.5.9 Rail

3.5.10 Banbury railway station lies on the Chiltern Mainline with frequent services to / from Birmingham Snowhill, Stratford-upon-Avon, Kidderminster, London Marylebone, London Paddington, Oxford, Manchester and Reading.

3.5.11 The railway station is located within cycling distance at 3.4km from the site and cycle parking is provided at the station enabling future residents of the site to undertake a multi-modal journey to work and leisure locations.

## 3.6 Summary

3.6.1 The site is accessible by all modes of travel providing future residents and employees with a choice of transport modes when travelling to and from the site.

3.6.2 The site is located close to a number of key local services and facilities and within cycling distance of Banbury's railway station and main employment area.



## 4.0 Objectives and Targets

### 4.1 Objectives

4.1.1 The main objectives of this Travel Plan are to:

- encourage sustainable travel modes for travel to/from the site;
- enable access to a full range of facilities for work, education, health, leisure, recreation and shopping; and
- promote healthy lifestyles for the residents and employees of the development.

### 4.2 Targets

4.2.1 As end users and their existing travel habits are not known the 2001 'Journey to Work' Census Data has been interrogated to inform existing modal splits. The output from the Office of National Statistics is attached in **Appendix B**.

4.2.2 Using the 'Banbury Easington' ward as an origin the journey to work data contained within the 2001 Census has been interrogated to indicate the expected modal split for the development site and is shown in **Table 4.1**. This data is based on the nearest ward and is representative of modal choice that the development will generate without a Travel Plan.

**Table 4.1 -Percentages of trips to work by main mode of travel by ward  
(2001 Census – Banbury Easington Ward)**

Walk	SOV	Car Share	Bus	Train	Motorcycle	Cycle	Taxi	Other
18.6%	64.4%	8.1%	2.0%	1.3%	1.0%	3.6%	0.5%	0.5%

4.2.3 Based on these figures it is proposed that the initial main target of the Travel Plan will be to reduce single occupancy car journeys over the initial 5 year period.

4.2.3 This reduction will be discussed and agreed with OCC Travel Plan officers.





## 5.0 Travel Plan Strategy

### 5.1 Management

#### 5.1.1 Residential

5.1.2 The appointment of a Travel Plan Coordinator (TPC) is one of the most important aspects of any Travel Plan.

5.1.3 A TPC will be appointed to co-ordinate the Travel Plan and the measures which are incorporated into it prior to the occupation of the first dwelling. The name and contact details of the TPC will be provided to OCC.

5.1.4 The TPC will be responsible for all aspects of the Travel Plan. His or her primary functions will be as follows:

- Liaison with the local planning and highway authorities;
- Organisation of travel surveys;
- Promotion of sustainable transport measures to residents – this will take place from occupation of the first dwelling and will be repeated annually;
- Maintenance of all necessary systems, data and paperwork, such as tenant contact details and records of the distribution of Welcome Packs;
- Liaison with local schools and businesses who have Travel Plans;
- Updating the site's Travel Plan website and notice board.

5.1.5 Increasing the travel awareness of residents so that they can make informed travel choices is seen as a key role of the TPC. The TPC will be given sufficient time and resources to effectively undertake their duties and implement the Travel Plan. The TPC will work closely with Travel Plan Officers at OCC and seek to promote any transport initiatives the council may have.

5.1.6 It is acknowledged that there will be a requirement to produce documentation (e.g. Welcome Pack) prior to the occupation of the first dwelling. At this stage the Travel Plan Co-ordinator may not have



## Travel Plan

been appointed and therefore the first point of contact should be Gallagher Estates, Gallagher House, Gallagher Way, Gallagher Business Park, Heathcote, Warwick CV34 6AF.

### 5.1.7 **Employment**

5.1.8 The appointment of a Travel Plan Coordinator (TPC) is one of the most important aspects of any Travel Plan.

5.1.9 A TPC will be appointed to co-ordinate the Travel Plan and the measures which are incorporated into it prior to the occupation of the buildings. The name and contact details of the TPC will be provided to OCC.

5.1.10 The TPC will be responsible for all aspects of the Travel Plan. His or her primary functions will be as follows:

- Liaison with the local planning and highway authorities;
- Organisation of travel surveys;
- Promotion of sustainable transport measures to employees – this will take place from occupation;
- Maintenance of all necessary systems, data and paperwork, such as employee contact details and records of the distribution of Welcome Packs and the take up of schemes introduced;
- Liaison with local businesses and residential developments who have Travel Plans;
- Updating the site's Travel Plan notice board.

5.1.11 Increasing the travel awareness of employees so that they can make informed travel choices is seen as a key role of the TPC. The TPC will be given sufficient time and resources to effectively undertake their duties and implement the Travel Plan. The TPC will work closely with Travel Plan Officers at OCC and seek to promote any transport initiatives the council may have.



## 5.2 Marketing and Consultation

### 5.2.1 Residential

5.2.2 All residents will be made aware of the existence of the Travel Plan on the commencement of their residence on the site. The details of the Travel Plan, its objectives in enhancing the environment, and the role of individuals in achieving these objectives will be explained.

5.2.3 A Welcome Pack will be provided. This will contain Travel Plan and sustainable transport information and other relevant transport information including:

- A summarised version of the Travel Plan Strategy document, that sets out the purpose and benefits etc;
- A multi-modal leaflet to include walking, cycling and public transport routes and information;
- Contact numbers and web details for National Rail, National Express, Stagecoach, Heyfordian Travel Ltd and Traveline South-east;
- Car Share Scheme information ([www.oxfordshire.liftshare.com](http://www.oxfordshire.liftshare.com))
- Local taxi company details;
- The contact details of local and national cycling organisations, such as Sustrans;
- Information on working from home;
- Web details for any community travel sites and community forum sites and
- Contact details of the site TPC and OCC's TPC.

5.2.4 Contact details of the TPC will be advertised in the event that residents wish to discuss specific matters directly.



## Travel Plan

### 5.2.5 **Employment**

5.2.6 All employees will be made aware of the existence of the Travel Plan on the commencement of their employment on the site. The details of the Travel Plan, its objectives in enhancing the environment, and the role of individuals in achieving these objectives will be explained.

5.2.7 A Welcome Pack will be provided. This will contain Travel Plan and sustainable transport information and other relevant transport information including:

- A summarised version of the Travel Plan Strategy document, that sets out the purpose and benefits etc;
- A multi-modal leaflet to include walking, cycling and public transport routes and information;
- Contact numbers and web details for National Rail, National Express, Stagecoach, Heyfordian Travel Ltd and Traveline South-east;
- Car Share Scheme information ([www.oxfordshire.liftshare.com](http://www.oxfordshire.liftshare.com))
- Local taxi company details;
- The contact details of local and national cycling organisations, such as Sustrans;
- Details of any cycle purchase scheme if implemented;
- Web details for any community travel sites and community forum sites and
- Contact details of the site TPC and OCC's TPC.



## 6.0 Sustainable Transport Measures

6.1.1 This section details the measures which the developer has committed to in an effort to ensure the success of the Travel Plan.

### 6.2 On-site

6.2.1 The developer has committed to the following measures to ensure travel to and from the site is as sustainable as possible and that the Travel Plan is a success. These measures will be the responsibility of the current developer or any future developers.

6.2.2 Shared pedestrian / cycle links will be provided to enable residents and employees direct access to and from the existing Salt Way cycle path.

6.2.3 The design of estate roads will be in accordance with Manual for Streets and other relevant guidance so that the road system is not the dominant feature within the new community. By undertaking this approach it is hoped that car speeds will be kept low and hence walking and cycling will be an attractive mode of transport.

6.2.4 In terms of the layout and design of the site a network of high quality pedestrian and cycle routes within the site will offer direct, safe and convenient access around the site by foot and bicycle.

6.2.5 A travel website will also be maintained by the TPC providing travel information for site users. The website will contain public transport information, pedestrian and cycle route information, as well as details of any car share scheme and other sustainable travel initiatives. The website will be in operation prior to the occupation of the first dwelling or building.

6.2.6 The developer will liaise with Public Transport providers to extend a local bus service in to the site with the aim of ensuring that all future residents and employees are within 400 metres of a bus service. The developer will provide bus shelters with timetable displays and bus boarder kerbs.

#### 6.2.7 Residential Site

6.2.8 Two Travel Plan Notice boards will be installed in prominent positions to be agreed with the Council. Bus timetables, pedestrian and cycle route information, details of car free days etc. will be displayed. These will be updated on a regular basis by the TPC.





## Travel Plan

- 6.2.9 Residential developers will consider the provision of home office space within residential dwellings. Provision of home office space would allow future residents to work from home, minimising the number of journeys made to and from the site as the need to commute on a daily basis is removed.
- 6.2.10 Vehicle and cycle parking will be provided in accordance with the Council's parking standards.
- 6.2.11 Reserved Matters applications will indicate the location of cycle parking spaces i.e. for individual dwellings enlarged garages or sheds with suitable locking points will be used and for apartments shared enclosed structures with suitable locking points will be used.
- 6.2.12 **Employment Site**
- 6.2.13 A Travel Plan Noticeboard will be installed in all buildings. Bus timetables, pedestrian and cycle route information, details of car free days etc will be displayed. These will be updated on a regular basis by the TPC.
- 6.2.14 Vehicle and secure, covered cycle parking will be provided in accordance with OCC's parking standards. The TPC will monitor cycle parking usage ensuring that if there is an under provision of spaces additional parking is provided.
- 6.2.15 Showers, changing areas and lockers will be provided in all buildings.

## 6.3 Off-site

- 6.3.1 The development will construct a footway/cycleway along the frontage of the site heading north and tying in with the existing footway infrastructure on Bloxham Road.
- 6.3.2 The signalling of the Bloxham Road / Queensway junction will include pedestrian phases improving pedestrian crossing facilities on both of these roads.
- 6.3.3 Improvements to the Oxford Road/Bloxham Road junction with improved pedestrian facilities.

## 6.4 Smarter Choices



## Travel Plan

### 6.4.1 Residential Site

6.4.2 A travel website will be maintained by the TPC providing travel information for site users. The website will contain public transport information, pedestrian and cycle route information, as well as details of car share websites and other sustainable initiatives.

6.4.3 The TPC will gauge the level of interest for walking and cycling Budi schemes. If suitable levels of interest are shown the TPC will implement Budi schemes.

6.4.4 The TPC will investigate whether any local bike shops offer a discount for the purchase of bicycles and equipment.

6.4.5 The TPC will encourage residents to join local and national car share websites through promotional materials.

6.4.6 The TPC will advertise events such as Walk/Cycle to Work Days/Weeks.

6.4.7 Local bus companies, may wish to offer subsidised public transport tickets or a free weekly trial pass to try and encourage the residents to use public transport. The TPC will investigate with local bus companies the possibility of opportunities.

### 6.4.8 Employment Site

6.4.9 A travel website will be maintained by the TPC providing travel information for site users. The website will contain public transport information, pedestrian and cycle route information, as well as details of car share websites and other sustainable initiatives.

6.4.10 The TPC will gauge the level of interest for walking and cycling Budi schemes. If suitable levels of interest are shown the TPC will implement Budi schemes.

6.4.11 The TPC will investigate participating in the Cycle to Work discount cycle scheme. The TPC will establish which local bike shops participate in the scheme and provide details to employees.

6.4.12 The TPC will investigate whether any local bike shops offer a discount for the purchase of bicycles and equipment.

6.4.13 The TPC will encourage employees to join local and national car share websites through promotional materials.



Travel Plan

6.4.14 A supply of basic cycling equipment will be stored by the TPC for use by cyclists travelling to and from the site i.e. puncture repair kit, batteries for lights, bicycle pump.

6.4.15 Local bus companies, may wish to offer subsidised public transport tickets or a free weekly trial pass to try and encourage the employees to use public transport. The TPC will investigate with local bus companies the possibility of opportunities.





## 7.0 Monitoring and Review

### 7.1 Monitoring

- 7.1.1 Travel surveys will be carried out within 1 year of occupation of the first dwelling and 6 months of the occupation of an employment building. Subsequent travel surveys will be carried out on an annual basis.
- 7.1.2 Additional monitoring of the following is also useful to judge whether the implementation or proportion of certain measures needs to be modified. These factors should be monitored on a constant basis:
- Monitor the level and usage of parking spaces and the level of any overspill parking in the surrounding area;
  - Record comments received from residents and employees relating to the operation and implications of the Travel Plan.
- 7.1.3 A spreadsheet will be kept and submitted to the Council recording when households and employees receive their Travel Plan Welcome Pack

### 7.2 Review

- 7.2.1 The Travel Plan Review will involve two stages. The first is a basic biannual review of targets and measures. The monitoring surveys will show whether targets are being met and whether the measures implemented are having the desired effect on travel patterns.
- 7.2.2 The second stage involves the TPC undertaking a full and comprehensive review of the Travel Plan at Year 5 once the fifth monitoring survey has been undertaken and the results analysed. This review will involve completely updating the Travel Plan document to take into account changes to transport availability, changes in travel patterns, changes in resident / employee numbers and revisions to targets and measures.
- 7.2.3 Any on-going monitoring of measure uptake will be included within the review.
- 7.2.4 The Travel Plan will be monitored on a five-year cycle. However, it is envisaged that the monitoring programme will help to identify what is causing the target to not be met. Rectifying problems could



## Travel Plan

involve implementing more or different measures or adjusting targets to more realistic levels. The monitoring will be undertaken in-house by the TPC using an approved questionnaire.

### **7.3 Reporting**

7.3.1 The TPC will compile a biannual Monitoring Report outlining the results of the monitoring survey and review. The report will also incorporate the results of on-going monitoring throughout the preceding period. The report will be issued to the Council and retained for records.

7.3.2 The monitoring report will include the following aspects:

- Site name and address;
- A summary of the Travel Plan;
- How and when monitoring information was gathered;
- Whether travel patterns are meeting objectives and targets; and
- Proposals to further develop the Travel Plan.

7.3.3 A full comprehensive report will be issued at Year 5.





## 8.0 Summary

8.1.1 To support sustainable travel to and from the site GE have committed to:

- The provision of a Welcome pack for each household and employee;
- Negotiation of the diversion of an existing bus service into the site to enable future residents access to a bus service within 400 metres of their dwelling;
- Providing bus shelters, timetable displays and bus boarders for bus stops within the development;
- Pedestrian / cycle links onto the existing Salt Way cycleway;
- A footway provided along the frontage of the site and extend to the north to tie in to the existing Bloxham Road pedestrian provision;
- Signalisation of the Bloxham Road / Queensway junction with pedestrian phases included to improve pedestrian facilities on Bloxham Road and Queensway;
- Improvements to the Oxford Road/Bloxham Road junction with improved pedestrian facilities.
- The provision of suitable cycle parking;
- The provision of a Travel Plan website and two notice boards;
- The funding of the TPC;
- A sustainable design of the site, in accordance with Manual for Streets, which places walking and cycling at the top of the transport hierarchy.
- A comprehensive monitoring program has been drawn up to ensure the success of the Travel Plan. Action Plan



## 9.0 Action Plan

Action Type	Action	Responsibility	Timeframe	Notes
<b>Management</b>	Appointment of Travel Plan Coordinator (TPC)	Land Owners	Prior to occupation of first dwelling.	The contact details of the TPC should be passed on to OCC Travel Plan Officer.
<b>Baseline Travel Patterns</b>	Baseline travel survey	TPC	Within 1 year of occupation of the first dwelling.  Within 6 months of occupation of the first employment building.	Survey results will be reported back to OCC. The baseline survey represents the Travel Plans Year 0 start point, i.e. the point that implementation occurs.
<b>Travel Plan Document Completion</b>	Travel Plan document completion	TPC	Within 3 months of the completion of the baseline survey.	This should be completed well before the Travel Plan launch.
<b>Monitoring, Review &amp; Reporting</b>	Monitoring of measures and initiative take-up	TPC	On-going	This will involve regular monitoring.



Action Type	Action	Responsibility	Timeframe	Notes
<b>Monitoring, Review &amp; Reporting</b>  <b>Implementation</b>	First monitoring travel survey	TPC	At Year 1	On the first anniversary of the completion of the baseline survey. This will be completed in-house using an OCC approved questionnaire.
	Partial targets and measure review and reporting 1	TPC and Planning Authority	Following Year 1 snapshot survey result analysis	This will be a partial review focusing on revision of measures where necessary.
	Bi annual surveys	TPC	Biannually	This will be completed in-house using an OCC approved questionnaire.
	Fifth monitoring survey	TPC	At Year 5	On the fifth anniversary of the completion of the baseline survey.
	Full review and reporting	TPC and Planning Authority	Following Year 5 monitoring survey results analysis	This will be a full review at the end of the 5 year monitoring and review period.



Action Type	Action	Responsibility	Timeframe	Notes
	Implementation of measures	TPC	From the start of construction and on-going	Dependent on the nature of the measure. Physical measures such as construction of the bus stops will be implemented during construction. Other measures will be implemented on an on-going basis.



# Appendices

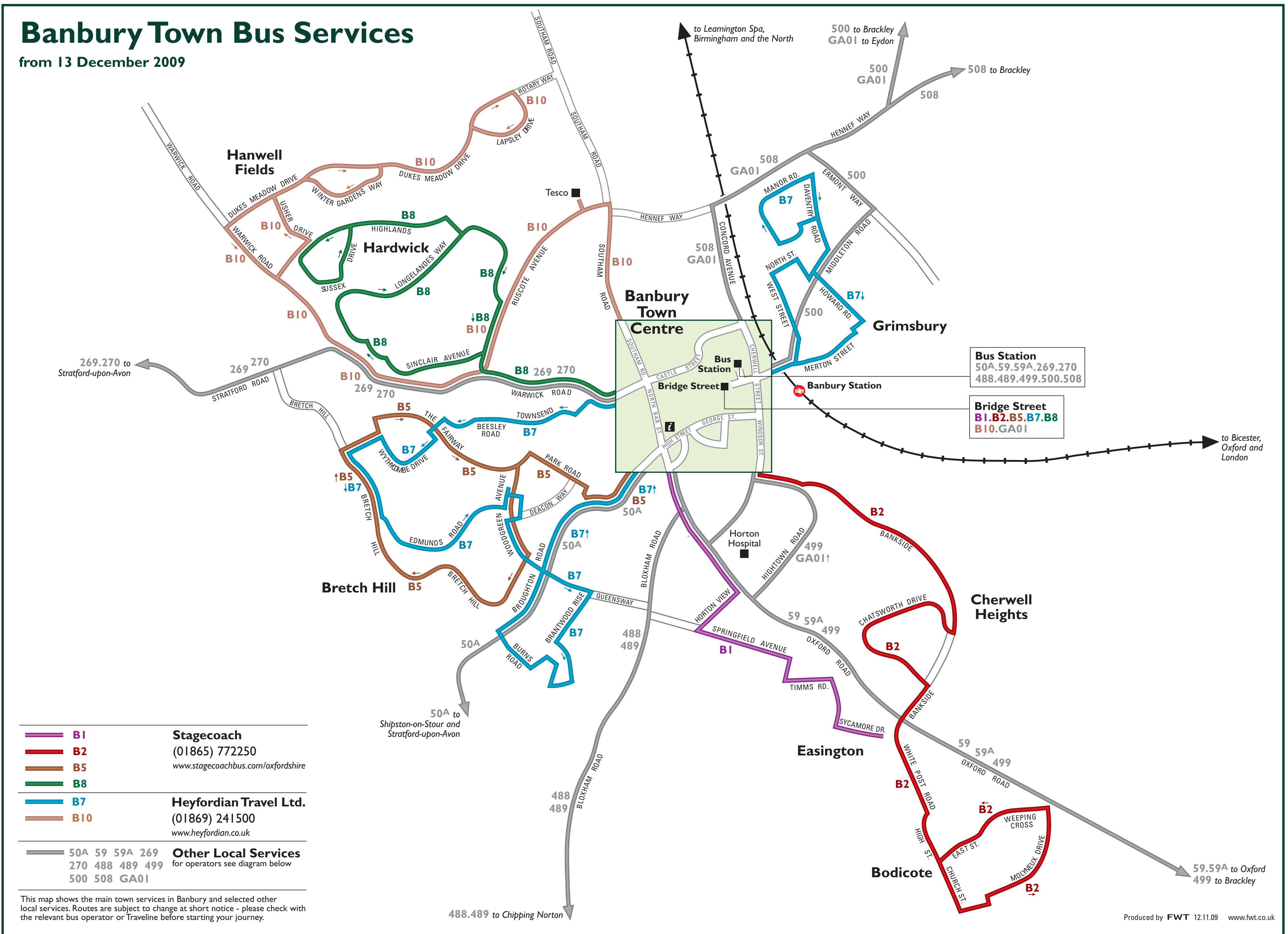




# Appendix A

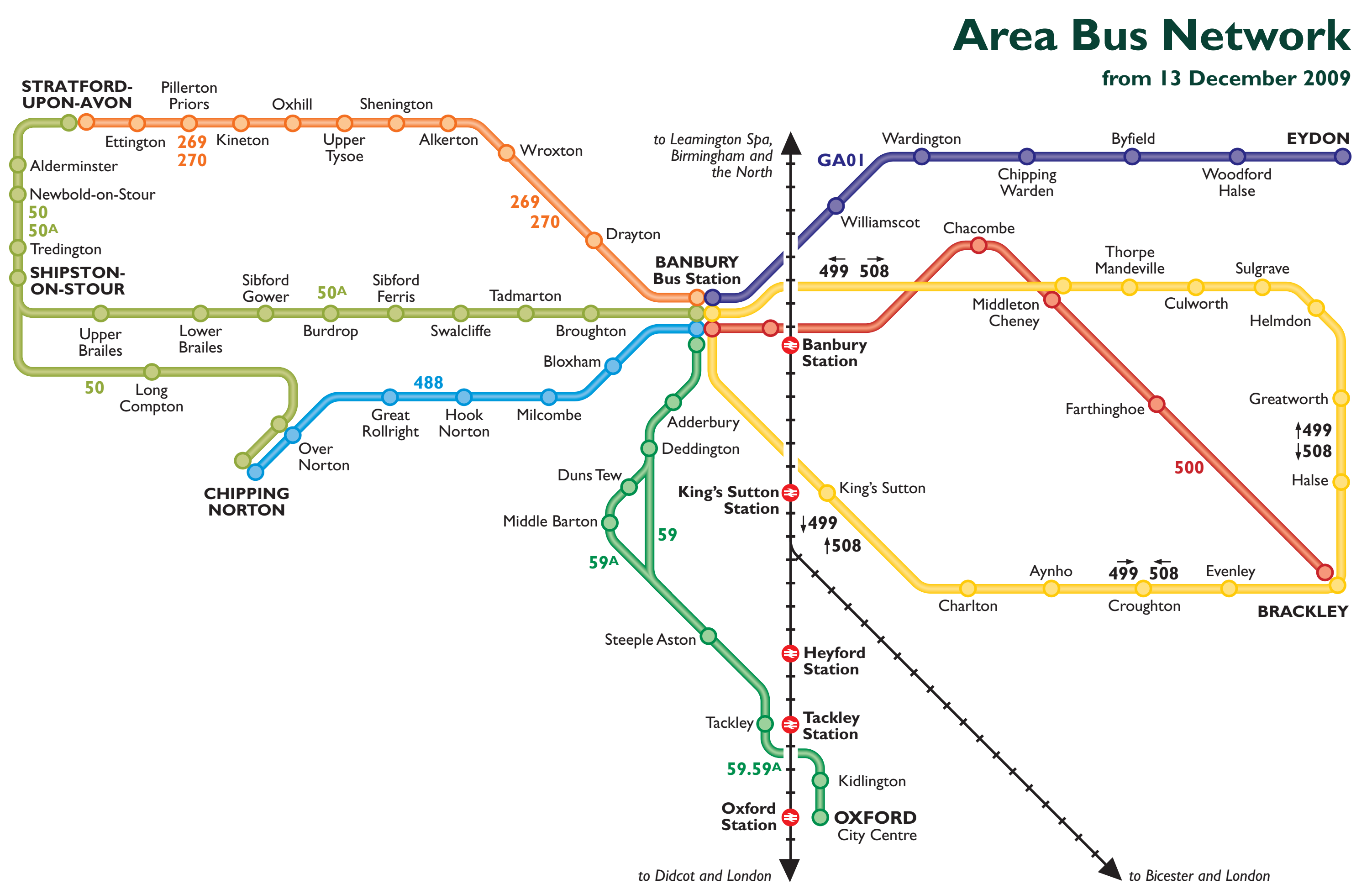


# Local Transport Information



Explore the **North Cotswolds** by train

pick up a guide at your nearest staffed station



### Taxi Information

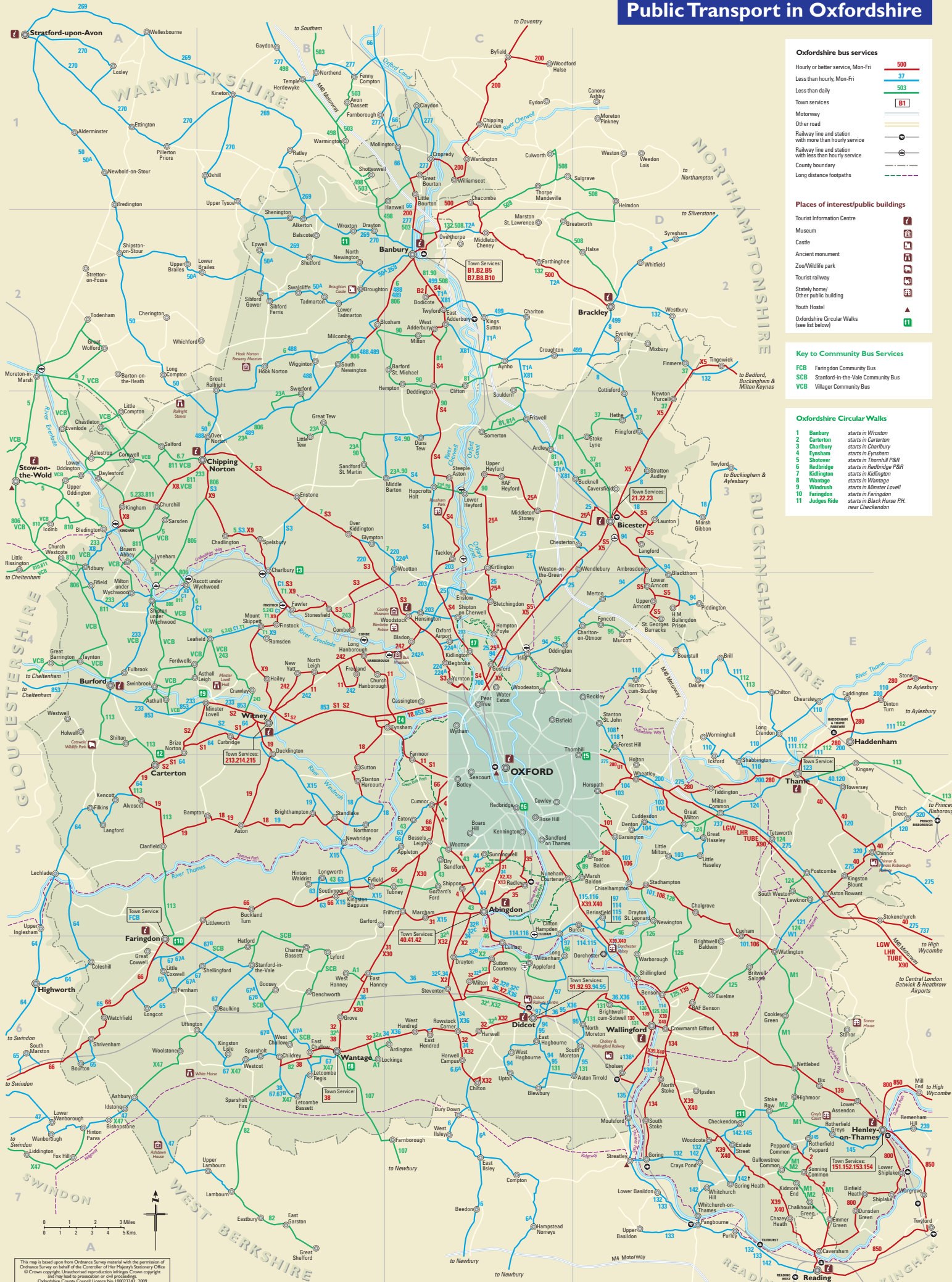
Taxis are available from the taxi rank outside the station

<b>50 50A</b> <b>59 59A</b> <b>488 500</b>	<b>Stagecoach</b> (01865) 772250 <a href="http://www.stagecoachbus.com/oxfordshire">www.stagecoachbus.com/oxfordshire</a>	<b>GA01</b>	<b>Geoff Amos Coaches</b> (01327) 260522 <a href="http://www.geoffamos.co.uk">www.geoffamos.co.uk</a>
<b>269 270</b>	<b>Johnson's Coaches</b> (01564) 797000 <a href="http://www.johnsoncoaches.co.uk">www.johnsoncoaches.co.uk</a>	<b>499 508</b>	<b>Tex Cars &amp; Coaches</b> (01295) 257692 <a href="http://www.texcoaches.co.uk">www.texcoaches.co.uk</a>





# Public Transport in Oxfordshire



**Oxfordshire bus services**

- Hourly or better service, Mon-Fri 500
- Less than hourly, Mon-Fri 37
- Less than daily 503
- Town services B1
- Motorway
- Other road
- Railway line and station with more than hourly service
- Railway line and station with less than hourly service
- County boundary
- Long distance footpaths

**Places of interest/public buildings**

- Tourist Information Centre
- Museum
- Castle
- Ancient monument
- Zoo/Wildlife park
- Tourist railway
- Stately home/Other public building
- Youth Hostel
- Oxfordshire Circular Walks (see list below)

**Key to Community Bus Services**

- FCB Faringdon Community Bus
- SCB Stanford-in-the-Vale Community Bus
- VCB Villager Community Bus

**Oxfordshire Circular Walks**

- 1 Banbury starts in Wroxton
- 2 Carterton starts in Carterton
- 3 Charlbury starts in Charlbury
- 4 Eynsham starts in Eynsham
- 5 Shoveur starts in Thornhill P&R
- 6 Redbridge starts in Redbridge P&R
- 7 Kidlington starts in Kidlington
- 8 Wantage starts in Wantage
- 9 Windrush starts in Miser Lovell
- 10 Faringdon starts in Faringdon
- 11 Judges Ride starts in Black Horse PH, near Cheldonker

This map is based upon Ordnance Survey material with the permission of Ordnance Survey on behalf of the Controller of Her Majesty's Stationary Office. © Crown copyright. Unauthorised reproduction is prohibited. Crown copyright. It may lead to prosecution or civil proceedings. Oxfordshire County Council Licence No. 10002314. 2009. Images supplied by Mapbox Ltd. Edited by Melissa John Hemmard.

# Oxfordshire Bus Services and Frequencies

Service	Operator	Low Floor?	Route Description	Days of Operation	Daytime Frequency
1	Stagecoach	✓	Oxford - Cowley Centre - Blackbird Leys	Mon-Sat	8 mins
		✓		Sun	15 mins
2	Oxford Bus/Stagecoach	✓	Oxford - Summertown - Kidlington (Grovelands & Evans Lane)	Mon-Sat	15 mins
		✓		Sun	30 mins
2A	Oxford Bus/Stagecoach	✓	Oxford - Summertown - Kidlington (Grovelands)	Mon-Sat	15 mins
		✓		Sun	30 mins
2B	Oxford Bus/Stagecoach	✓	Oxford - Summertown - Kidlington (Lyne Mead & Grovelands)	Mon-Sat	15 mins
		✓		Sun	30 mins
2C	Oxford Bus/Stagecoach	✓	Oxford - Summertown - Kidlington (Lyne Mead & Grovelands) - Kidlington Airport	M-F pm peak	15 mins
2D	Oxford Bus/Stagecoach	✓	Oxford - Summertown - Kidlington - Kidlington Airport	M-F am peak	15 mins
Vitality 2	Reading Buses	✓	Mortimer - Reading - Sonning Common - Peppard Common	Mon-Sat	30 mins
		✓		Sun	60 mins
3	Oxford Bus/Stagecoach	✓	Oxford - Iffley Road - Rose Hill	Mon-Sat	7-8 mins
		✓		Sun	15 mins
3B	Oxford Bus Company	✓	Rose Hill - Elms Rise	Mon-Fri	1 journey
4	Oxford Bus Company	✓	Wood Farm - Morrell Avenue - Oxford - Cumnor - Abingdon	Daily	60 mins
4A	Oxford Bus Company	✓	Wood Farm - Morrell Avenue - Oxford - Elms Rise	Mon-Sat	20 mins
		✓		Sun	30 mins
4B	Oxford Bus Company	✓	Wood Farm - Morrell Avenue - Oxford - Cumnor	Mon-Sat	60 mins
4C	Oxford Bus Company	✓	Wood Farm - Morrell Avenue - Oxford - Dean Court	Daily	60 mins
5	Bakers		Chadlington - Charlbury - Leafield - Ascott-under-Wychwood - Kingham - Moreton-in-Marsh	Tue	1 journey
5	Oxford Bus Company	✓	Oxford Rail Station - Oxford - Cowley Centre - Blackbird Leys	Daily	8 mins
		✓		Sun	15 mins
6	Bakers		Banbury - Bloxham - Chipping Norton - Salford - Moreton-in-Marsh	Tue	1 journey
6	Newbury Buses	✓	Newbury - Chieveley - East Ilsley - (Harwell Campus) - Hermitage - Newbury	Mon-Sat	4 (1) journeys
6	Oxford Bus Company	✓	Oxford - Woodstock Road - Wolvercote	Mon-Sat	15 mins
		✓		Sun	20 mins
6A	Newbury Buses	✓	Newbury - Hermitage - East Ilsley - (Harwell Campus) - Chieveley - Newbury	Mon-Sat	4 (1) journeys
7	Bakers		Hensington - Woodstock - Chipping Norton - Moreton-in-Marsh	Tue	1 journey
8	Oxford Bus/Stagecoach	✓	Oxford - Headington - Barton	Mon-Sat	6 mins
		✓		Sun	10 mins
8	Stagecoach		Towcester - Brackley - Hethe - Stratton Audley - Bicester	Mon-Sat	5 journeys
9	Oxford Bus/Stagecoach	✓	Oxford - Headington - Risinghurst	Mon-Sat	30 mins
		✓		Sun	60 mins
10	Stagecoach	✓	Oxford - Cowley Centre - Wood Farm - Headington - John Radcliffe Hospital	Mon-Sat	12-15 mins
		✓		Sun	30 mins
11	Stagecoach	✓	Oxford - Eynsham - Long Hanborough - Freeland - North Leigh - Witney	Mon-Sat	60 mins

12	Stagecoach	✓	Oxford - Cowley Centre - Blackbird Leys - Greater Leys	Mon-Sat	30 mins
		✓		Sun	60 mins
12C	Stagecoach	✓	Oxford - Littlemore - Greater Leys - Blackbird Leys	Eves	5 journeys
13	Oxford Bus Company	✓	Oxford Rail Station - Oxford - Marston - Northway - John Radcliffe Hospital	Mon-Sat	20 mins
		✓		Sun	30 mins
14	Stagecoach	✓	Oxford Rail Station - Oxford - Cherwell Drive - John Radcliffe Hospital	Mon-Sat	60 mins
14A	Stagecoach	✓	Oxford Rail Station - Oxford - Marston Village - John Radcliffe Hospital	Mon-Sat	60 mins
16	Stagecoach	✓	Oxford - Florence Park - Cowley Centre - Minchery Farm	Mon-Sat	30 mins
		✓		Sun	60 mins
16A	Stagecoach	✓	Minchery Farm - Littlemore - Cowley Centre - Oxford	Mon-Sat	6 journeys
17	Stagecoach	✓	Oxford - Jericho - Summertown - Cutteslowe	Mon-Sat	60 mins
17A	Stagecoach	✓	Oxford Rail Station - Oxford - Jericho - Cherwell Drive - John Radcliffe Hospital	Eves	60 mins
17C	Stagecoach	✓	Oxford Rail Station - Oxford - Jericho - Marston Village - John Radcliffe Hospital	Sun	60 mins
18	Langston & Tasker		(Bicester) - Launton - Steeple Claydon - Buckingham - (Aylesbury)	Mon-Fri	5 journeys
18	RH Transport Services	✓	Oxford - Eynsham - Stanton Harcourt - Standlake - Brighthampton - Aston - Bampton/Clanfield	Mon-Sat	60 mins
19	RH Transport Services	✓	Witney - Ducklington - Aston - Bampton - Clanfield - Carterton - Shilton Park	Mon-Sat	60 mins
20	Stagecoach	✓	Rose Hill - Cowley Centre	Mon-Sat	60 mins
21	Grayline	✓	Bicester Town circular via Highfield	Mon-Sat	30 mins
22	Heyfordian	✓	Bicester Town circular via Fields Farm and Langford	Mon-Sat	30 mins
23	Heyfordian	✓	Bicester Town circular via Southwold, Caversfield and Bure Park	Mon-Sat	30 mins
23	Oxford Bus Company	✓	Redbridge Park&Ride - Oxford - John Radcliffe Hospital	M-F off peak	30 mins
23A	Heyfordian	✓	Steeple Aston - Middle Barton - Great Tew - Chipping Norton	Wed/Sat	1 journey
25	Heyfordian	✓	Oxford - Gosford - (Woodstock) - Bletchingdon - Kirtlington - Weston-on-the-Green - Bicester	Mon-Sat	(3) 5 journeys
25A	Heyfordian	✓	Oxford - Gosford - Bletchingdon - Kirtlington - Heyford - Middleton Stoney - Bicester	Mon-Sat	60 mins
31	Stagecoach	✓	Oxford - Abingdon - Marcham - Wantage	Daily	60 mins
32	Thames Travel	✓	Abingdon - Culham - Didcot - Harwell - Wantage - Grove	Mon-Sat	60 mins
32A	Thames Travel	✓	(Oxford) - Didcot - Harwell - Wantage - Grove	Sun	(5) 6 journeys
32B	Thames Travel	✓	Abingdon - Drayton - Sutton Courtenay - Milton - Didcot	Eves	2 journeys
32C	Thames Travel	✓	Abingdon - Drayton - Steventon - Milton Park - Didcot	Eves	2 journeys
34	Stagecoach	✓	Oxford - Abingdon - Steventon - Harwell Campus - Wantage	Mon-Fri	2 journeys
35	Oxford Bus Company	✓	Oxford - Kennington - Radley - Abingdon	Mon-Sat	15 mins
		✓		Sun	30 mins
36	Thames Travel	✓	Wallingford - Didcot - Milton Park - Steventon - Grove - East Hanney - Wantage	Mon-Fri	6 journeys
		✓	Wallingford - Didcot	Sat	60 mins
		✓	Wallingford - Didcot	Sun	3 journeys
37	Heyfordian	✓	Finnere - Newton Purcell - Hardwick - Stoke Lyne - Bicester	Tue/Wed	2 journeys
38	Whites Coaches	✓	Wantage town service via Grove and Childrey (peak journeys via the Letcombes)	Mon-Sat	60 mins
40	Arriva the Shires	✓	High Wycombe - Stokenchurch - Chinnor - Thame	Mon-Fri	60 mins
		✓	High Wycombe - Stokenchurch - Chinnor - Thame	Sat	7/8 journeys
40	Heyfordian	✓	Abingdon town service via Preston Road & Saxton Road	Mon-Sat	60 mins
41	Heyfordian	✓	Abingdon town service via Peachcroft Road & Dunmore Road	Mon-Sat	4 journeys



42	Heyfordian	✓	Abingdon town service via Peachcroft Road & Northcourt Road	Mon-Sat	4 journeys
43	Oxfordshire CC	✓	Eaton - Longworth - Wootton - Abingdon	Thu	1 journey
44	Heyfordian	✓	Abingdon - Sunningwell - Bayworth - Boars Hill - Oxford	Mon-Sat	4-7 journeys
47	Thamesdown Transport	✓	Swindon - Wanborough - Bishopstone - Ashbury - Lambourn	Mon-Sat	7 journeys
50	Stagecoach	✓	Stratford upon Avon - Shipston-on-Stour - Long Compton - Chipping Norton	Daily	4-5 journeys
50A	Stagecoach	✓	Stratford upon Avon - Shipston-on-Stour - Sibford - Tadmarton - Banbury	Mon-Sat	6-7 journeys
61	Faringdon Community Bus		Faringdon town service	Mon-Fri	4 journeys
63	RH Transport Services	✓	Oxford - Appleton - Longworth - Hinton Waldrist - Southmoor	Mon-Sat	4 journeys
64	RH Transport Services	✓	(Witney) - Carterton - Lechlade - Swindon	Mon-Sat	(1) 5 journeys
65	Stagecoach		Swindon - Watchfield - Longcot - Fernham - Faringdon	Mon-Sat	3-4 journeys
66	Stagecoach	✓	Swindon - Shrivenham - Faringdon - Southmoor - Besselsleigh - Oxford	Mon-Sat	30 mins
		✓		Sun	9 journeys
66	Stagecoach		Leamington Spa - Radford Semele - Southam - Banbury	Mon-Sat	5 journeys
67	RH Transport Services	✓	Faringdon - Stanford - Uffington - Kingston Lisle - Childrey - The Letcombes - Wantage	Mon-Sat	1 journeys
67A	RH Transport Services	✓	Faringdon - Stanford - East Challow - Wantage	Mon-Sat	5/6 journeys
67B	RH Transport Services	✓	Wantage - The Letcombes - Childrey - Stanford in the Vale - Faringdon	Mon-Sat	1/2 journeys
81	Heyfordian	✓	Bicester - Ardley - Souldern - Aynho - Adderbury - Banbury	Thu/Fri/Sat	2 journeys
81A	Heyfordian	✓	Bicester - Ardley - Souldern	Tue/Wed	2 journeys
82	Barnes Coaches		Great Shefford - Lambourn - Wantage	Wed	1 journey
85	Stagecoach	✓	Iffley Village - Cowley Centre	Mon/Wed/Fri	1 journey
86	Stagecoach	✓	Lye Valley - Wood Farm - Cowley Centre	Mon-Fri	1 journey
89	Stagecoach	✓	Nuneham Courtenay - The Baldons - Cowley Centre	Tue/Thu/Sat	1 journey
90	Oxfordshire CC	✓	Upper Heyford - Middle Barton - Deddington - Adderbury - Banbury	Thu	1 journey
91	Whites Coaches	✓	Didcot town service via Ladygrove & The Oval	Mon-Sat	6-7 journeys
92	Whites Coaches	✓	Didcot town service via Newlands Avenue & Barnes Road	Mon-Sat	6 journeys
93	Charlton Services		Noke - Woodeaton - Islip	Fri	1 journey
93	Whites Coaches	✓	Didcot town service via Didcot Hospital & Freeman Road	Mon-Sat	6 journeys
94	Charlton Services		(Bicester) - Ambrosden - Charlton - Oddington - Islip - (Oxford)	Mon-Fri	5 journeys
				Sat	1 journey
94	Thames Travel	✓	Didcot - West Hagbourne - Blewbury - Didcot	Mon-Sat	7-9 journeys
95	Charlton Services		Murcott - Fencott - Charlton	Mon-Fri	2 journeys
95	Thames Travel	✓	Didcot - North Moreton - South Moreton - Aston Tirrold - Blewbury - Didcot	Mon-Sat	2-3 journeys
97	Thames Travel	✓	Berinsfield - Clifton Hampden - Long Wittenham - Didcot	Mon-Sat	4 journeys
97	Whites Coaches	✓	Dorchester - Berinsfield - Clifton Hampden - Long Wittenham - Didcot	Schooldays	1 journey
101	Go Ride CIC	✓	Watlington - Garsington - Oxford	Sat/Sun/PHol	4 journeys
101	Thames Travel	✓	Oxford - Garsington - (Chalgrove - Watlington)	Mon-Sat	60 mins (2 jnys)
103	Heyfordian	✓	Oxford - Horspath - Wheatley - Great Milton - The Haseleys - Little Milton	Mon-Sat	120 mins
104	Heyfordian	✓	Oxford - Horspath - Wheatley - Great Milton - Cuddesdon - Denton	Mon-Sat	120 mins
106	Thames Travel	✓	(Watlington - Stadhampton) - Kassam Stadium - Science Park - Sandford - Oxford	Mon-Fri	(2) 8 journeys
106A	Thames Travel	✓	Watlington - Stadhampton - Garsington - Kassam Stadium - Science Park - Sandford - Oxford	Mon-Fri	1 journey
106C	Thames Travel	✓	Watlington - Stadhampton - Kassam Stadium - Science Park - Sandford - Cowley - Oxford	Mon- Fri	7 journeys

		✓	Watlington - Stadhampton - Kassam Stadium - Sandford - Cowley - Oxford	Sat	60 mins
107	Weavaway Travel		Newbury - Wantage - Newbury	Sat	2 journeys
108	Heyfordian	✓	Oxford - Forest Hill - Stanton St John	Mon-Sat	6 journeys
110	Arriva the Shires/ Z&S	✓	Aylesbury - Long Crendon - Thame	Mon-Sat	5-7 journeys
		✓	Worminghall - Long Crendon - Thame	Mon-Sat	4-6 journeys
111	Z&S International	✓	Oakley - Brill - Thame - Haddenham - Aylesbury	Mon	1 journey
		✓	Oakley - Brill - Long Crendon - Thame	Mon-Fri	1 journey
112	Z&S International	✓	Waddesdon - Oakley - Brill -Thame - Haddenham - Aylesbury	Wed/Fri	1 journey
113	Pulhams Coaches		Fulbrook - Burford - Carterton - Clanfield - Faringdon	Thu	3 journeys
113	Z&S International	✓	Oakley - Brill - Long Crendon - Thame - Princes Risborough - Thame - Long Crendon - Brill - Oakley	Tue/Thu	1 journey
		✓	Oakley - Brill - Long Crendon - Thame	Tue/Thu	1 journey
		✓	Brill - Oakley - Long Crendon - Thame - Princes Risborough - Little Kimble	Tue/Thu	1 journey
114	Thames Travel	✓	Wallingford - Benson/Dorchester - Berinsfield - Abingdon	Mon-Sat	4-7 journeys
115	Thames Travel	✓	Oxford - Littlemore - Berinsfield - Dorchester	Mon-Sat	1/2 journey
116	Thames Travel	✓	Abingdon - Clifton Hampden - Berinsfield - Littlemore - Cowley - Oxford	Mon-Sat	60 mins
118	Heyfordian	✓	Oxford - Forest Hill - Beckley - Horton-cum-Studley - Brill - (Bicester)	Wed/Fri/Sat	3 (1) journeys
120	Arriva the Shires	✓	Thame - Towersey - Chinnor - Princes Risborough	Mon-Sat	1-2 journeys
121	Arriva the Shires	✓	Watlington - Aston Rowant - Chinnor	Mon-Sat	1 journey
123	Arriva the Shires	✓	Thame Local Service	Mon-Sat	2 journeys
124	Arriva the Shires	✓	Watlington - Lewknor - Postcombe - Tetsworth - Great Milton - Milton Common - Thame	Tue	1 journey
		✓	Watlington - Lewknor - Postcombe - Tetsworth - Milton Common - Thame	Mo/We/Th/Fr/Sa	1 journey
125	Whites Coaches	✓	Watlington - Ewelme - Benson - Wallingford	Mo/Tu/Th/Fr	1 journey
126	Whites Coaches	✓	Wallingford - Benson - Chalgrove - Newington - Wallingford	Fri	2 journeys
131	Whites Coaches	✓	East Hagbourne - Blewbury - The Moretons - Wallingford	Fri	1 journey
132	Redline Buses		Buckingham - Tingewick - Finmere - Brackley	Mon-Fri	1 journey
			Buckingham - Tingewick - Finmere - Brackley - (Banbury)	Sat	3 (2) journeys
132	Thames Travel	✓	Goring - The Basildons - Pangbourne - Purley - Reading	Mon-Sat	120 mins
133	Thames Travel	✓	(Streatley) - Goring - Pangbourne - Reading	Mon-Sat	5-6 journeys
134	Go Ride CIC	✓	Wallingford - Crowmarsh - The Stokes - Goring	Mon-Sat	60 mins
135	Thames Travel		Goring - Moulsoford - Wallingford	Mon-Fri	2 journeys
136A/C	Thames Travel	✓	Wallingford - Cholsey - Wallingford	Mon-Sat	60 mins
139	Thames Travel	✓	Wallingford - Benson - Nettlebed - Henley	Mon-Sat	60 mins
		✓		Sun	120 mins
142	Thames Travel	✓	Goring Heath/Checkendon - Woodcote - Pangbourne - Reading	Mon-Sat	5-6 journeys
145	Whites Coaches	✓	Woodcote - Checkendon - Stoke Row - Sonning Common - Rotherfield Greys - Henley	Mon-Fri	3 journeys
		✓		Sat	1 journey
151	Whites Coaches	✓	Henley town service via Elizabeth Road & Greys Road	Mon-Sat	60 mins
152	Whites Coaches	✓	Henley town service via Watermans Road & South Avenue	Mon-Sat	60 mins
153	Whites Coaches	✓	Henley town service via Abrahams Road	Mon-Sat	5 journeys
154	Whites Coaches	✓	Henley town service via Blandy Road	Mon-Sat	60 mins
200	Arriva the Shires	✓	Oxford - Thame - Haddenham - Aylesbury	Mon-Fri (peak)	3 journeys

200	Stagecoach	✓	(Daventry) - Woodford Halse - Cropredy - Banbury	Mon-Sat	60 mins
203	Heyfordian	✓	Woodstock - Shipton-on-Cherwell - Kidlington - Shipton-on-Cherwell - Woodstock	Mon-Fri	4 journeys
213	Stagecoach	✓	Witney town service via Farmers Close - Wood Green - Madley Park - Cogges	Mon-Sat	6 journeys
214	Stagecoach	✓	Witney town service via Cogges - Madley Park - Wood Green - Farmers Close	Mon-Sat	3-4 journeys
215	Stagecoach	✓	Witney town service via Smiths Estate	Mon-Sat	60 mins
218	Heyfordian	✓	Wytham - Godstow - Summertown - Oxford	Mon-Sat	1 journey
220	Heyfordian	✓	Woodstock - Glympton - Wootton - Woodstock	Mon-Fri	4-5 journeys
223	Heyfordian	✓	Kidlington - Gosford - Kidlington	Mon-Sat	5 journeys
224	Heyfordian	✓	Kidlington - Begbroke - Yarnton - Kidlington - (Woodstock)	Mon-Fri	8 journeys
		✓		Sat	5 journeys
224A	Heyfordian	✓	(Glympton - Wootton) - Kidlington - Yarnton - Kidlington	Mon-Fri	(1) 2 journeys
		✓		Sat	1 journey
233	Stagecoach	✓	Witney - Burford - Shipton u Wychwood - Milton u Wychwood	Mon-Sat	8 journeys
		✓	Witney - Burford - Milton u Wychwood - Kingham Station - (Chipping Norton)	Sun	4 (3) journeys
239	Courtney Coaches	✓	Henley - Hurley - Maidenhead	Mon-Sat	4 journeys
242	Stagecoach	✓	Witney - New Yatt - North Leigh - Long Hanborough - Bladon - Woodstock	Mon-Sat	60 mins
242A	Heyfordian	✓	Woodstock - Bladon - Woodstock	Mon-Fri	2 journeys
243	RH Transport Services	✓	Combe - Finstock - Witney	Tue/Fri	3 journeys
269	Johnsons Coaches	✓	Banbury - Radway - Kineton - Wellesbourne - Stratford upon Avon	Mon-Sat	4 journeys
270	Johnsons Coaches	✓	Banbury - Shenington - Oxhill - Kineton - Ettington - Stratford upon Avon	Mon-Sat	6 journeys
275	Red Rose		High Wycombe - Stokenchurch/Chinnor - Milton Common - Wheatley - Oxford	Mon-Fri	1/3 journeys
277	Stagecoach	✓	(Lighthorne Heath) - Farnborough - Cropredy - Banbury	Mon-Sat	(1) 2 journeys
280	Arriva the Shires	✓	Oxford - Wheatley - Thame - Haddenham - Aylesbury	Mon-Sat	20-30 mins
		✓		Sun	60 mins
300	Oxford Bus Company	✓	Redbridge Park&Ride - Oxford - Pear Tree Park&Ride	Mon-Sat	6-7 mins
		✓		Sun	15 mins
320	Redline Buses		Chinnor - Bledlow - Princes Risborough Station	Mon-Fri	7-9 journeys
400	Oxford Bus Company	✓	Seacourt Park&Ride - Oxford - Thornhill Park&Ride	Mon-Sat	10-15 mins
		✓		Sun	15 mins
488	Stagecoach	✓	Banbury - Bloxham - Milcombe - Hook Norton - Chipping Norton	Mon-Sat	60 mins
489	Stagecoach	✓	Banbury - Bloxham - South Newington - Chipping Norton	Mon-Sat	2-3 journeys
498	A&M Flexibus	✓	Radford Semele - Banbury	Thu	1 journey
499	Heyfordian	✓	Brackley - Aynho - Kings Sutton - Banbury	Mon-Sat	120 mins
500	Oxford Bus Company	✓	Oxford - Water Eaton Park&Ride	Mon-Sat	15-20 mins
500	Stagecoach	✓	Banbury - Middleton Cheney - Farthinghoe - Brackley	Mon-Sat	20 mins
		✓	Banbury - (Middleton Cheney) - Farthinghoe - Brackley	Sun	8 (4) journeys
503	Catterall's Coaches		Long Itchington - Southam - Northend - Banbury	Thu	1 journey
508	Tex Cars & Coaches		Brackley - Greatworth - Helmdon - Culworth - Midleton Cheney - Banbury - Bodicote	Thu/Sat	2 journeys
600	Oxfordshire CC	✓	Thornhill Park&Ride - Headington - Nuffield Hospital - Churchill Hospital	Mon-Fri (peak)	5/6 journeys
700	RH Transport Services	✓	(Kidlington) - Water Eaton Park&Ride - Summertown - John Radcliffe Hospital - Churchill Hospital	Mon-Fri	15 mins (5-10 jnys)
737	National Express	✓	Oxford - High Wycombe - Hemel Hempstead - Luton Airport - Stansted Airport	Daily	8 journeys

800	Arriva the Shires	✓	High Wycombe - Marlow - Henley - Shiplake - Reading	Daily	60 mins
806	Pulhams Coaches		Bourton on the Water - Milton-under-Wychwood - Chipping Norton - Bloxham - Banbury	Thu	1 journey
810	Pulhams Coaches		Upper Oddington - Kingham - Bourton on the Water	Thu	1 journey
811	Pulhams Coaches		Salford - Chipping Norton - Kingham - Cheltenham	Sat	1 journey
850	Arriva the Shires	✓	High Wycombe - Marlow - Henley - Twyford - Reading	Mon-Sat	60 mins
A1	Oxfordshire CC		Ardington - Lockinge - Wantage - West Hanney - Wantage - Lockinge - Ardington	Mo/We/Fr	5 journeys
B1	Stagecoach	✓	Banbury - Easington circular	Mon-Sat	30 mins
		✓		Sun	4 journeys
B2	Stagecoach	✓	Banbury - Bankside - Cherwell Heights - Bodicote circular	Mon-Sat	30 mins
		✓		Sun	5 journeys
B5	Stagecoach	✓	Banbury - Bretch Hill circular	Mon-Sat	12 mins
		✓		Sun	30 mins
B7	Heyfordian	✓	Grimsbury - Banbury - Bretch Hill - Poets Corner circular	Mon-Sat	60 mins
		✓		Sun	60 mins
B10	Heyfordian	✓	Banbury - Hanwell Fields circular	Mon-Sat	60 mins
BVS	Grayline		Bicester North Station - Bicester Village	Daily	10 mins
C1	RH Transport Services	✓	(Milton-under-Wychwood - Shipton - Ascott) - Leafield - Charlbury Station	Mon-Fri	(2) 7 journeys
H1	Oxfordshire CC		Old Marston - Cherwell Drive - Headington	Wed/Fri	1-2 journeys
H2	Oxfordshire CC		Sandhills/Headington - Headington Quarry (circular)	Mon-Fri	1-3 journeys
LGW	Oxford Bus Company		Oxford - Headington - Gatwick Airport "airline"	Daily	60 mins
LHR	Oxford Bus Company		Oxford - Headington - Heathrow Airport "airline"	Daily	20-30 mins
M1	Whites Coaches	✓	(Watlington) - Nettlebed - Sonning Common - Reading	Tu/We/Th	(1) 2 journeys
		✓	Watlington - Nettlebed - Sonning Common - Reading	Sat	1 journey
M2	Whites Coaches	✓	Nettlebed - Sonning Common - Reading	Tu/We/Th	1 journey
M10	Courtney Coaches	✓	Didcot Parkway - Milton Park	Mon-Fri (peak)	10-20 mins
S1	Stagecoach	✓	Oxford - Farmoor - Eynsham - Witney - (Carterton)	Mon-Sat	10-15 (30) mins
		✓	Oxford - Farmoor - Eynsham - Witney - Carterton	Sun	20 mins
S2	Stagecoach	✓	Oxford - Cassington Turn - Witney - Minster Lovell - Carterton	Mon-Sat	30 mins
		✓	Oxford - Cassington Turn - Carterton (direct via A40)	Mon-Fri	6-10 journeys
S3	Stagecoach	✓	Oxford - Yarnton - Woodstock - Enstone - Chipping Norton	Daily	60 mins
		✓	Oxford - Yarnton - Woodstock	Sun	60 mins
		✓	Oxford - Yarnton - Woodstock - Charlbury	Mon-Sat	60 mins
S4	Stagecoach	✓	Banbury - Adderbury - Deddington - Steeple Aston - Tackley - Kidlington - Oxford	Mon-Sat	3 journeys
		✓	Banbury - Adderbury - Deddington - Steeple Aston - Tackley - Kidlington Airport - Oxford	Mon-Sat	5 journeys
		✓	Banbury - Adderbury - Deddington - Steeple Aston - Duns Tew - Middle Barton - Tackley - Oxford	Mon-Sat	5 journeys
		✓	Banbury - Adderbury - Deddington - Steeple Aston - Tackley - Kidlington - Oxford	Sun	4 journeys
S5	Stagecoach	✓	Oxford - Gosford - Bicester - Glory Farm - Launton	Mon-Sat	60 mins
		✓	Oxford - Gosford - Bicester - Glory Farm - Langford	Mon-Sat	60 mins
		✓	Oxford - Gosford - Bicester - Bullingdon - Arncott	Mon-Sat	60 mins
		✓	Oxford - Gosford - Bicester - Glory Farm	Sun	60 mins
		✓	Oxford - Gosford - Bicester - Bullingdon - Ambrosden/Arncott	Sun	2/1 journeys



T1	RH Transport Services		Leaffield - Charlbury Station	Mon-Fri	4 jnys (on request)
T1A	Tex Cars & Coaches	✓	Banbury - Aynho - Bicester	Mon-Sat	4 journeys
T2A	Tex Cars & Coaches	✓	Brackley - Banbury	Mon-Sat	4 journeys
TB	Union Cars (Bicester Taxibus)		Launton/Chesterton/Ambrosden/Bicester Purslane Drive - Bicester North Station	am peak	6 journeys
				off peak	on demand
TUBE	Stagecoach	✓	Oxford - Headington - Lewknor - Hillingdon - London	Daily	12-15 mins
U1	Brookes Bus	✓	Brookes Wheatley - Headington - Oxford - Brookes Harcourt Hill (University Term)	Mon-Fri	15 mins
		✓		Sat/Sun	30 mins
U1	Brookes Bus	✓	Brookes Wheatley - Headington - Oxford - Brookes Harcourt Hill (University Vacation)	Mon-Sat	30 mins
		✓		Sun	60 mins
U5	Brookes Bus	✓	Oxford - Cowley - Headington - Marston (University Term)	Mon-Fri	30 mins
		✓		Sat/Sun	45 mins
		✓	Oxford - Cowley - Headington - Marston (University Vacation)	Daily	45 mins
U5X	Brookes Bus	✓	The Plain - Cowley - Eastern ByPass - Brookes Wheatley (University Term)	Mon-Fri	30-45 mins
W1	Go Ride CIC	✓	Watlington - Lewknor Turn - (Aston Rowant)	Mon-Fri (peak)	on demand
X2	Oxford Bus Company	✓	Oxford - Abingdon - Drayton - Steventon - Didcot	Mon-Fri	45 mins
		✓		Sat	60 mins
		✓	Oxford - Abingdon - Drayton - Steventon/Sutton Courtenay - Didcot	Sun	60 mins
X3	Oxford Bus Company	✓	Abingdon - Redbridge Park&Ride - Oxford Rail Station	Mon-Sat	20 mins
		✓		Sun	30 mins
X5	Stagecoach		Oxford - Bicester - Buckingham - Milton Keynes - Bedford - St Neots - Cambridge	Daily	30 mins
X8	RH Transport Services	✓	(Ascott u Wychwood - Shipton - Milton) - Kingham Station - Chipping Norton	Mon-Sat	60 mins (8 jnys)
X9	RH Transport Services	✓	Chipping Norton - Charlbury - Finstock - Witney	Mon-Sat	60 mins
X13	Oxford Bus Company	✓	Abingdon - Redbridge Park&Ride - Oxford - John Radcliffe Hospital	Mon-Sat	20 mins
		✓		Sun	30 mins
X15	RH Transport Services	✓	Abingdon - Marcham - Southmoor - Standlake - Witney	M-F term time	7 journeys
		✓		Sat & vacation	5 journeys
X30	Stagecoach	✓	Oxford - Cumnor - East Hanney (Main Road) - Grove - Wantage	Mon-Sat	30 mins
		✓		Sun	60 mins
X32	Thames Travel	✓	Chilton - Harwell - Didcot - Milton Park - A34 - Oxford	Daily	60 mins
X36	Thames Travel	✓	Wallingford - Didcot - Milton Park - Rowstock Corner - Wantage	Mon-Fri	5 journeys
X39	Thames Travel	✓	Oxford - Nuneham Courtenay - Shillingford - Wallingford - Reading	Mon-Sat	60 mins
X40	Thames Travel	✓	Oxford - Nuneham Courtenay - Shillingford - Wallingford - Woodcote - Reading	Daily	60 mins
X47	RH Transport Services	✓	Ardington - Wantage - The Letcombes - Childrey - Uffington - Swindon	Sat	3 journeys
X66	Stagecoach		Banbury - Lighthorne Heath - Leamington Spa	Schooldays	1 journey
X81	Heyfordian	✓	Bicester - Aynho - Banbury	Mon-Sat	1 journey
X90	Oxford Bus Company		Oxford - Headington - Hillingdon - London	Daily	15-20 mins
	<b>NIGHT BUSES</b>				
N1	Stagecoach	✓	Oxford - Cowley - Blackbird Leys	Mon-Thu	8 journeys
		✓		Fri/Sat	14/15 journeys

N2	Stagecoach	✓		Sun	5 journeys
		✓	Oxford - Summertown - Kidlington	Mon-Thu	5 journeys
		✓		Fri/Sat	13 journeys
		✓		Sun	3 journeys
N3	Stagecoach	✓	Oxford - Rose Hill	Fri/Sat	5 journeys
		N8	Stagecoach	✓	Oxford - Headington - Barton
✓				Fri/Sat	13 journeys
		✓		Sun	5 journeys
N10	Stagecoach	✓	Oxford - Cowley - Wood Farm - Headington	Fri/Sat	2 journeys
N30	Stagecoach	✓	Wantage - Grove - East Hanney - Cumnor - Oxford	Mon-Sat	3 journeys
N31	Stagecoach	✓	Oxford - Abingdon - Marcham - Wantage	Mon-Thu	1 journey
		✓		Fri/Sat	8 journeys
NS1	Stagecoach	✓	Oxford - Eynsham - Witney - Carterton	Mon-Thu	1 journey
		✓		Fri/Sat	8 journeys
		✓		Sun	1 journey
NS2	Stagecoach	✓	Carterton - Witney - Eynsham - Oxford	Fri/Sat	6 journeys
		✓	Carterton - Oxford	Sun	2 journeys
NS5	Stagecoach	✓	Oxford - Gosford - Bicester - Glory Farm	Mon-Fri	1 journey
		✓	Oxford - Gosford - Bicester	Fri/Sat	2 journeys
NU1	Brookes Bus	✓	Brookes Wheatley - Headington - Oxford - Brookes Harcourt Hill (University Term)	We/Fr/Sa	5 journeys
NU5	Brookes Bus	✓	Oxford - Cowley - Headington (University Term)	We/Fr/Sa	2 journeys

01 June 2012



## Appendix B



Method of Travel to Work - Resident Population (UV39)

			Banbury Easington Ward	Cherwell Non-Metropolitan District	South East Region	England Country		
All People	Count	Persons	Apr-01	5438	95757	5766307	35532091	3385
Works mainly at or from home	Count	Persons	Apr-01	355	6779	386302	2055224	
Underground, metro, light rail or tram	Count	Persons	Apr-01	5	60	8949	709386	0.15%
Train	Count	Persons	Apr-01	40	1177	218822	950023	1.18%
Bus, minibus or coach	Count	Persons	Apr-01	68	3465	169312	1685361	2.01%
Taxi or minicab	Count	Persons	Apr-01	18	257	16032	116503	0.53%
Driving a car or van	Count	Persons	Apr-01	2179	42743	2301493	12324166	64.37%
Passenger in a car or van	Count	Persons	Apr-01	273	4604	219850	1370685	8.06%
Motorcycle, scooter or moped	Count	Persons	Apr-01	33	698	43731	249456	0.97%
Bicycle	Count	Persons	Apr-01	123	2755	119315	634588	3.63%
On foot	Count	Persons	Apr-01	630	7435	385450	2241901	18.61%
Other	Count	Persons	Apr-01	16	267	19500	104205	0.47%
Not currently working	Count	Persons	Apr-01	1698	25517	1877551	13090593	

Method of Travel to Work - Resident Population, 2001 (UV39), Apr01 LastUpdated 18-Nov-04 100.00%

Method of Travel to Work - Resident Population, 2001 (UV39), Apr01 Source Office for National Statistics

Method of Travel to Work - Resident Population (UV39) National Statistics

This material is Crown Copyright. Users are granted permission to reproduce Crown Copyright material provided that a Click-Use Licence has been obtained from HMSO. The Click-Use Licence can be obtained from <http://www.clickanduse.hmsso.gov.uk>. When reproducing this material, the source should be acknowledged.

**SAVELL BIRD & AXON**

ROPEMAKER COURT, 12 LOWER PARK ROW, BRISTOL, BS1 5BN

TEL: +44 (0)117 925 4393

[www.sbox.co.uk](http://www.sbox.co.uk)