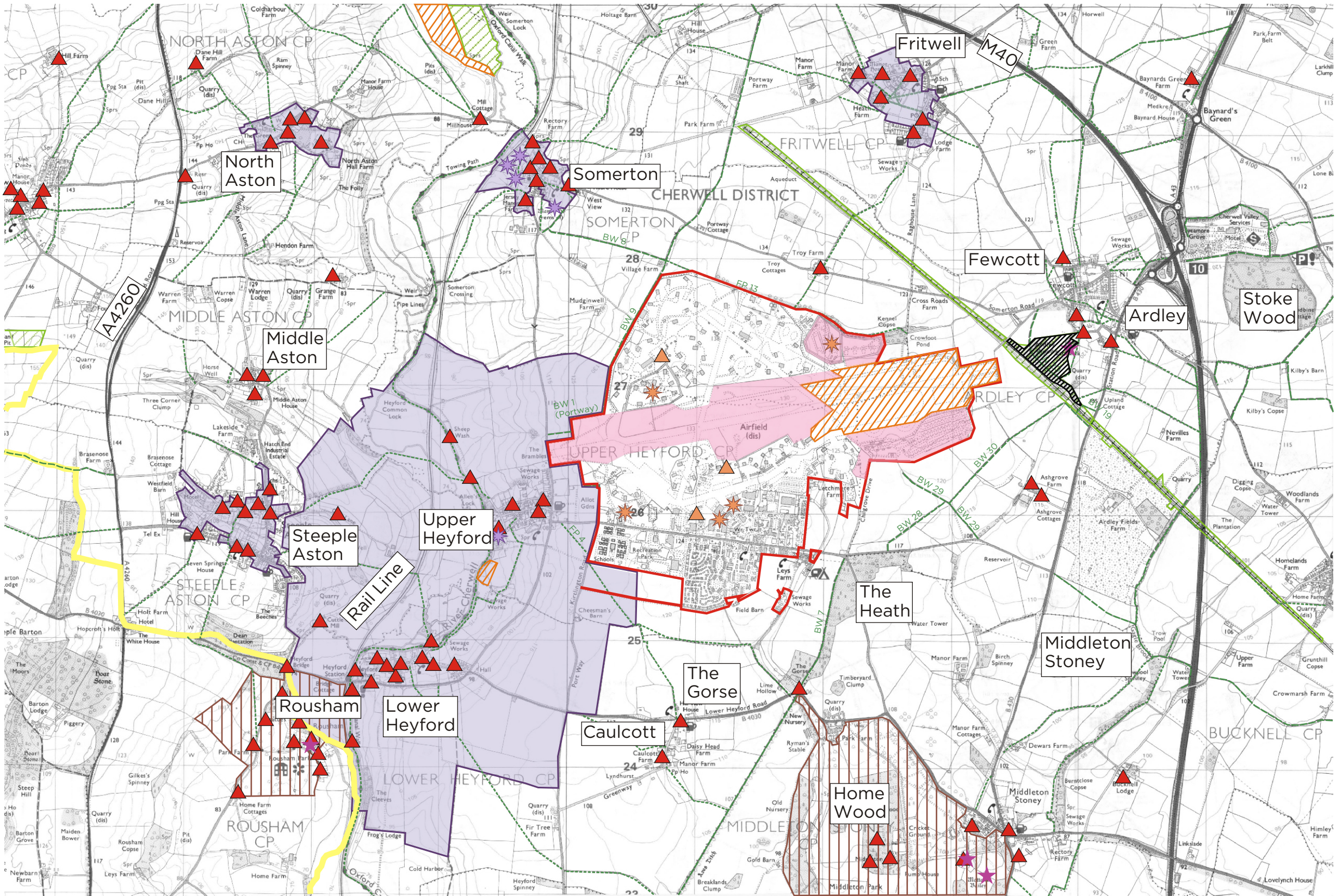


Do not scale this drawing.
All dimensions to be checked on site.



- LEGEND**
- Planning application boundary
 - Local Authority boundary
 - Conservation area (note 1)
 - Ecologically Important Landscape (note 3.)
 - Site of Special Scientific Interest (SSSI) (note 3.)
 - Wildlife Trust Reserves (note 3.)
 - Country Wildlife Sites (note 3.)
 - Historic parks and gardens (note 1 & 2)
 - Listed building (note 2)
 - Listed building (April 2008) (note 4)
 - Scheduled Ancient Monument (SAM) (note 1 & 2)
 - Scheduled Ancient Monument (SAM), (December 2006)(note 4)
 - SMR sites (note 2)
 - Existing right of way

Plan L3A

G	addition of listed structures within site since August 2007	HT	NJ	NJ	20/06/08
F	Amendments to red line boundary	LT	JC	JC	30/08/07
E	Minor amendments	LT	JC	JC	20/08/07
D	Minor amendments	LT	JC	JC	17/08/07
C	Amendment to application boundary	LT	JC	JC	16/08/07

Info Revision

COOPER PARTNERSHIP

T 0117 946 7488
F 0117 946 7478
mail@cooperpartnership.com
www.cooperpartnership.com

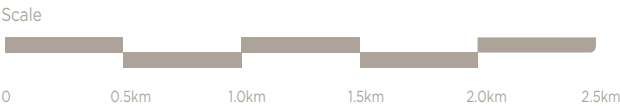
Job
Heyford Park

Title
LANDSCAPE PLANNING CONTEXT

Scale	Date	Drawn	Checked	Approved
As shown	July 06	SH	ND	JC

Drawing no 1802/04G	© Copyright
LANDSCAPE	
TOWNSCAPE	
ENVIRONMENT	

Notes
1.) Taken from Cherwell District Local Plan Adopted November 1996
2.) Taken from Oxfordshire County Council Sites and Monuments Record
3.) Taken from Thames Valley Environmental Records Centre, Oxfordshire County Council Licence no. La076805
4.) Please refer to Cultural Heritage Section for details.



Reproduced from the 191 Explorer 1:25,000 Ordnance Survey's® map with the permission of Ordnance Survey on behalf of The Controller of Her Majesty's Stationery Office, © Crown Copyright
Cooper Partnership Limited, Bristol, Ar100008366.