

Do not scale this drawing.
All dimensions to be checked on site.

LEGEND

- Planning application boundary
- Photographic viewpoints
- Photographic and photomontage viewpoints
- Night time photographs

Note:
1. Photographic Viewpoints 2, 3, 8 & 9 are located outside of the aerial coverage. Their locations can be viewed in relation to the site on Plan L7.

Plan L2

F	Amendments to red line boundary	LT	JC	JC	30/08/07
E	Minor amendments	LT	JC	JC	20/08/07
D	Minor amendments	LT	JC	JC	17/08/07
C	Planning application boundary revised	LT	JC	JC	16/08/07
B	Planning application boundary revised	IG	JC	JC	02/07/07
A	amendments to viewpoint numbers, application boundary & additional viewpoints added	LT	JC	JC	23/7/07
Rev	Revision	Drawn	Checked	Approved	Date

COOPER
PARTNERSHIP

T 0117 946 7488
F 0117 946 7478
mail@cooperpartnership.com
www.cooperpartnership.com

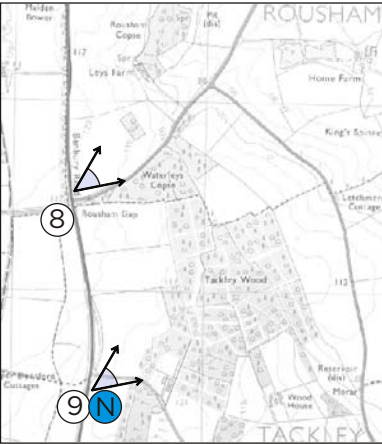
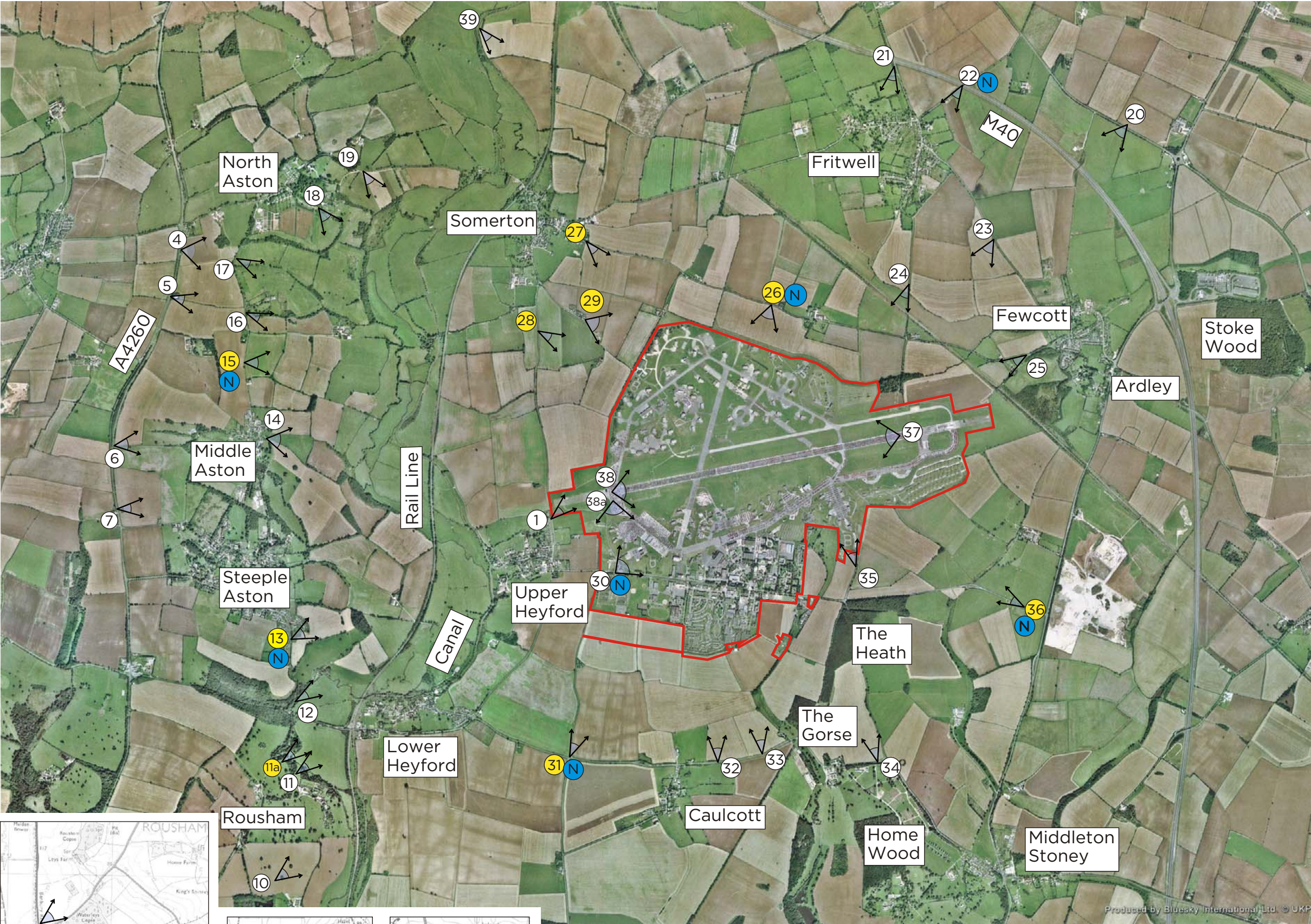
Job
Heyford Park

Title
AERIAL PHOTOGRAPH AND
PHOTOGRAPH LOCATIONS

Scale	Date	Drawn	Checked	Approved
As shown	July 06	SH	ND	JC

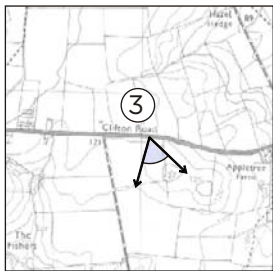
Drawing no
1802/02F

© Copyright

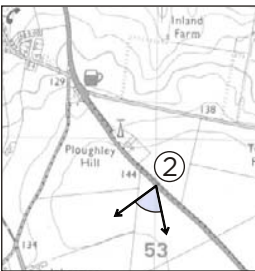


Further south on A4260

This image is an extract from The Millennium Map™ which is © getmapping.com plc - photography provided by Bluesky International Limited



NNW of airbase between Deddington and Clifton



NNE of airbase on B4100

Scale

