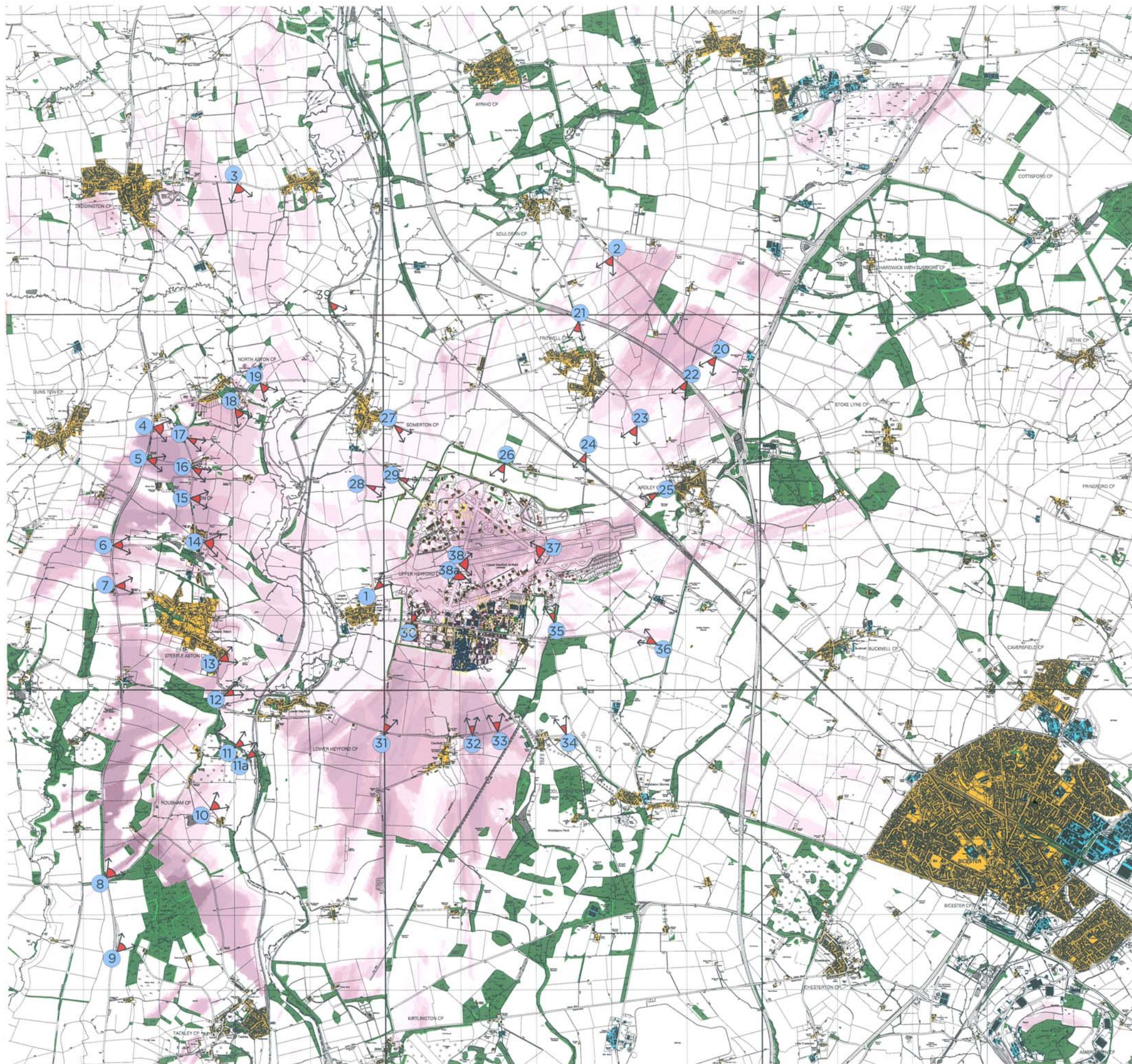


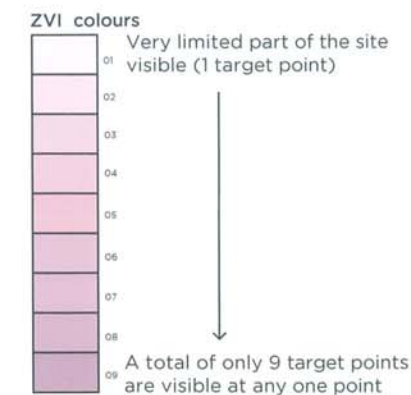
 Target point (assumed new development at xxxm height)

Target Point Heights

- TP 1 = 5m
- TP 2 = 12m
- TP 3 = 15m
- TP 4 = 10m
- TP 5 = 10m
- TP 6 = 4m
- TP 7 = 4m
- TP 8 = 8m
- TP 9 = 25m
- TP 10 = 10m
- TP 11 = 10m
- TP 12 = 25m
- TP 13 = 12m



LEGEND



- Visual Barriers
- Woodland 15m
 - Settlements 8m
 - Industrial buildings 11m
 - Woodland-10m
 - Hedge 2m
 - 4m buildings
 - 5m buildings
 - 8m buildings
 - 10m buildings
 - 12m buildings
 - Photograph locations

Plan L6

A Amendment to job title LT JC JC 20/8/07

COOPER
PARTNERSHIP

Heyford Park

VISUAL ENVELOPE OF SITE,
INCLUDING WATER TOWERS
AND CHIMNEY

As shown 07/07 LT ST ST

1802-56A

