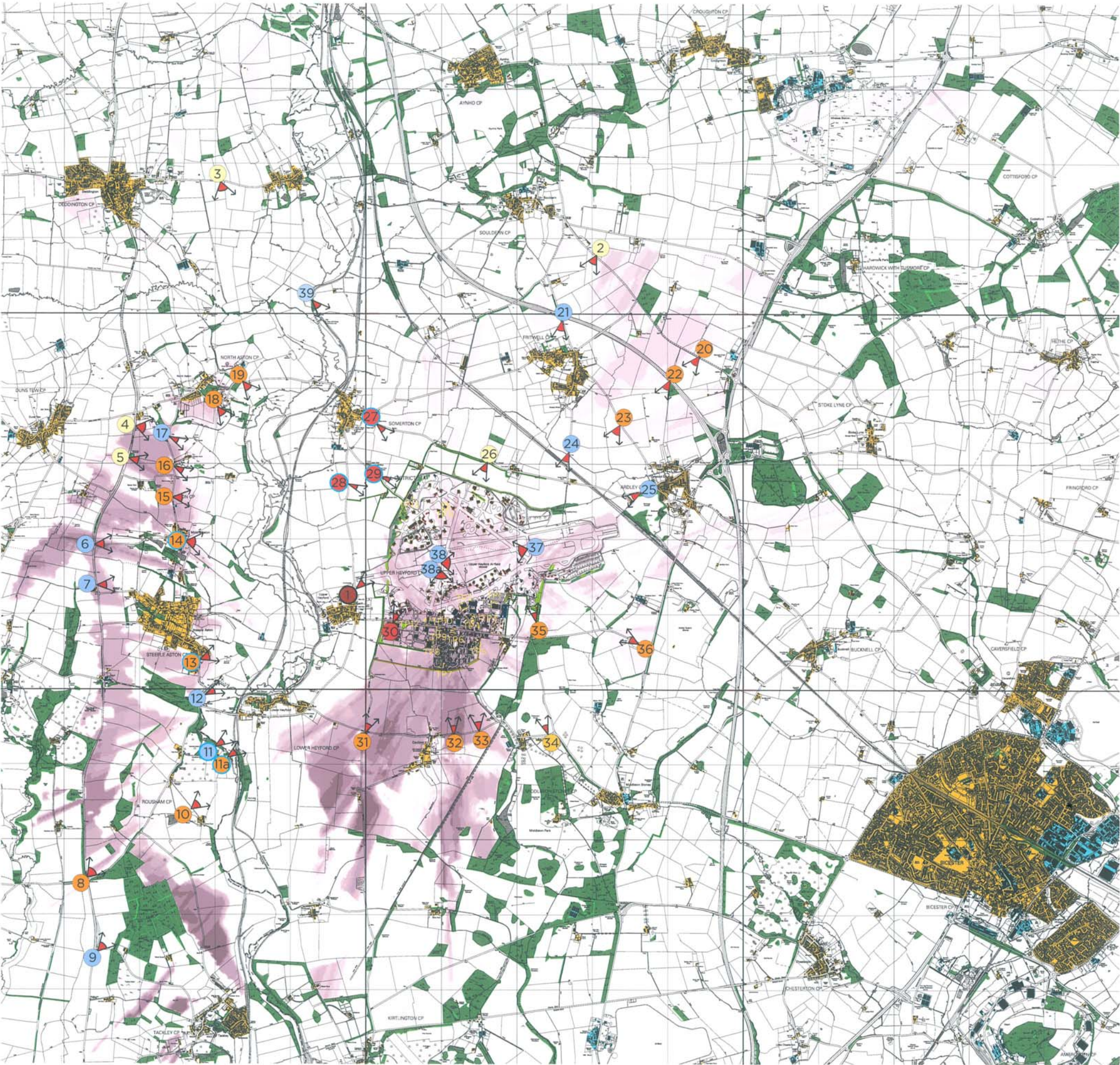


- Visual Assessment  
Refer to Table L12
- Major Adverse Impact
  - Moderate Adverse Impact
  - Slight Adverse Impact
  - Negligible Adverse Impact
  - No View
  - Neutral (of any magnitude)
  - Negligible Beneficial Impact
  - Slight Beneficial Impact
  - Moderate Beneficial Impact
  - Major Beneficial Impact
  - Significant
  - Moderately Significant

Target point

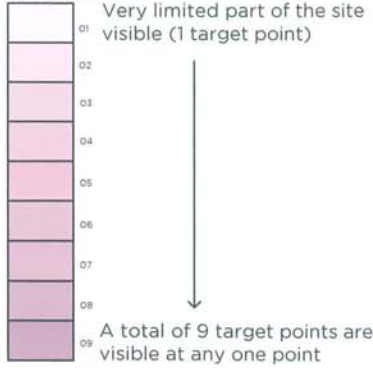
Target Point Heights

- TP 1 = 8m
- TP 2 = 12m
- TP 3 = 8m
- TP 4 = 8m
- TP 5 = 8m
- TP 6 = 10m
- TP 7 = 8m
- TP 8 = 8m
- TP 9 = 10m
- TP 10 = 8m
- TP 11 = 8m
- TP 12 = 0m
- TP 13 = 0m



LEGEND

ZVI colours



Visual Barriers

- Woodland 15m
- Settlements 8m
- Industrial buildings 11m
- Woodland-10m
- Hedge-2m
- New hedge -0m
- New planting-0m
- 4m buildings
- 5m buildings
- 8m buildings
- 10m buildings
- 12m buildings
- Viewpoints and photograph locations

Notes:  
It is assumed that all buildings to be removed are demolished and all proposed buildings are constructed.

Plan L7

A Amendment to job title LT JC JC 20/8/07

COOPER  
PARTNERSHIP

Heyford Park

ZVI - DURING CONSTRUCTION,  
FOLLOWING REMOVAL OF  
WATER TOWERS AND CHIMNEY

As shown 07/07 LT ST JC

