

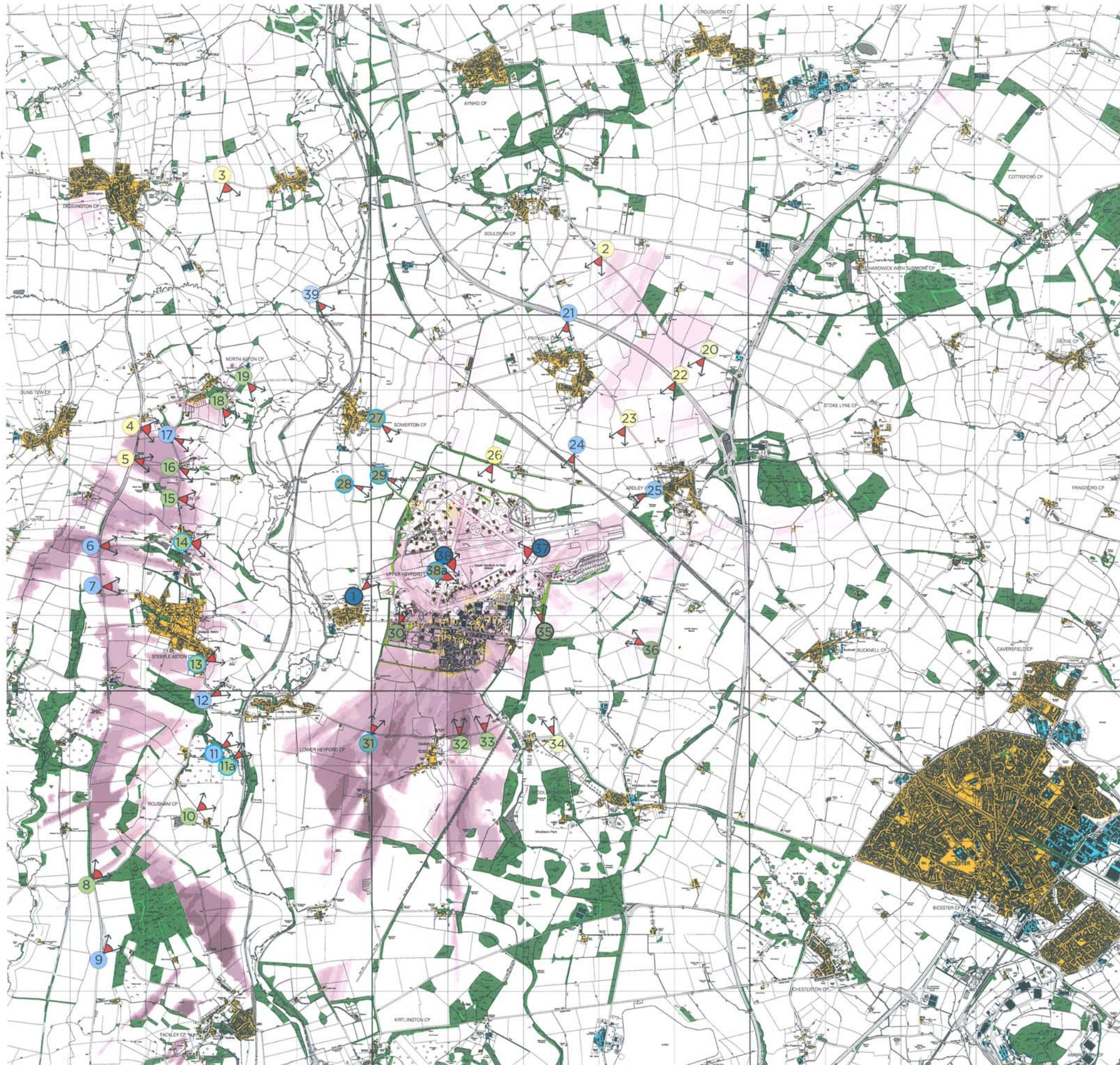
Visual Assessment
Refer to Table L12

- Major Adverse Impact
- Moderate Adverse Impact
- Slight Adverse Impact
- Negligible Adverse Impact
- No View
- Neutral (of any magnitude)
- Negligible Beneficial Impact
- Slight Beneficial Impact
- Moderate Beneficial Impact
- Major Beneficial Impact
- Significant
- Moderately Significant

Target point

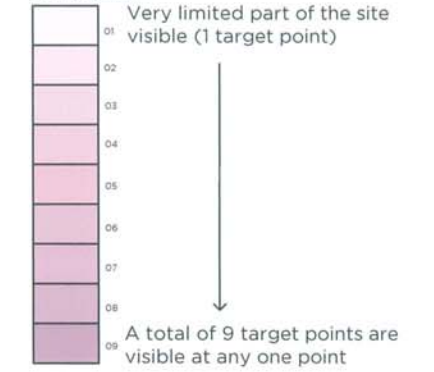
Target Point Heights

- TP1 = 8m
- TP2 = 12m
- TP3 = 8m
- TP4 = 8m
- TP5 = 8m
- TP6 = 10m
- TP7 = 8m
- TP8 = 8m
- TP9 = 10m
- TP10 = 8m
- TP11 = 8m
- TP12 = 0m
- TP13 = 0m



LEGEND

ZVI colours



Visual Barriers

- Woodland 15m
- Settlements 8m
- Industrial buildings 11m
- Woodland-10m
- Hedge-2m
- New hedge -0m
- New planting-0m
- 4m buildings
- 5m buildings
- 8m buildings
- 10m buildings
- 12m buildings
- Viewpoints and photograph locations

Plan L8

A Amendment to job title LT JC JC 20/8/07

COOPER
PARTNERSHIP

1802-55A
1802-55A
1802-55A

Heyford Park

ZVI - ON COMPLETION,
NO EFFECTIVE PLANTING

As shown 07/07 LT ST JC

1802-55A

- LANDSCAPE
- TOWNSCAPE
- ENVIRONMENT

