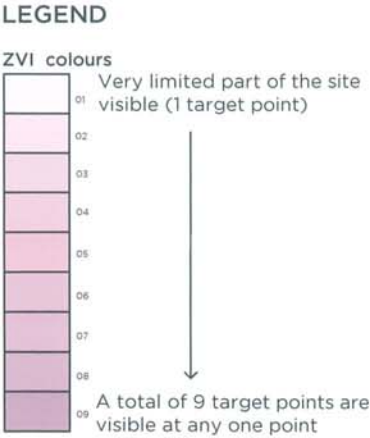
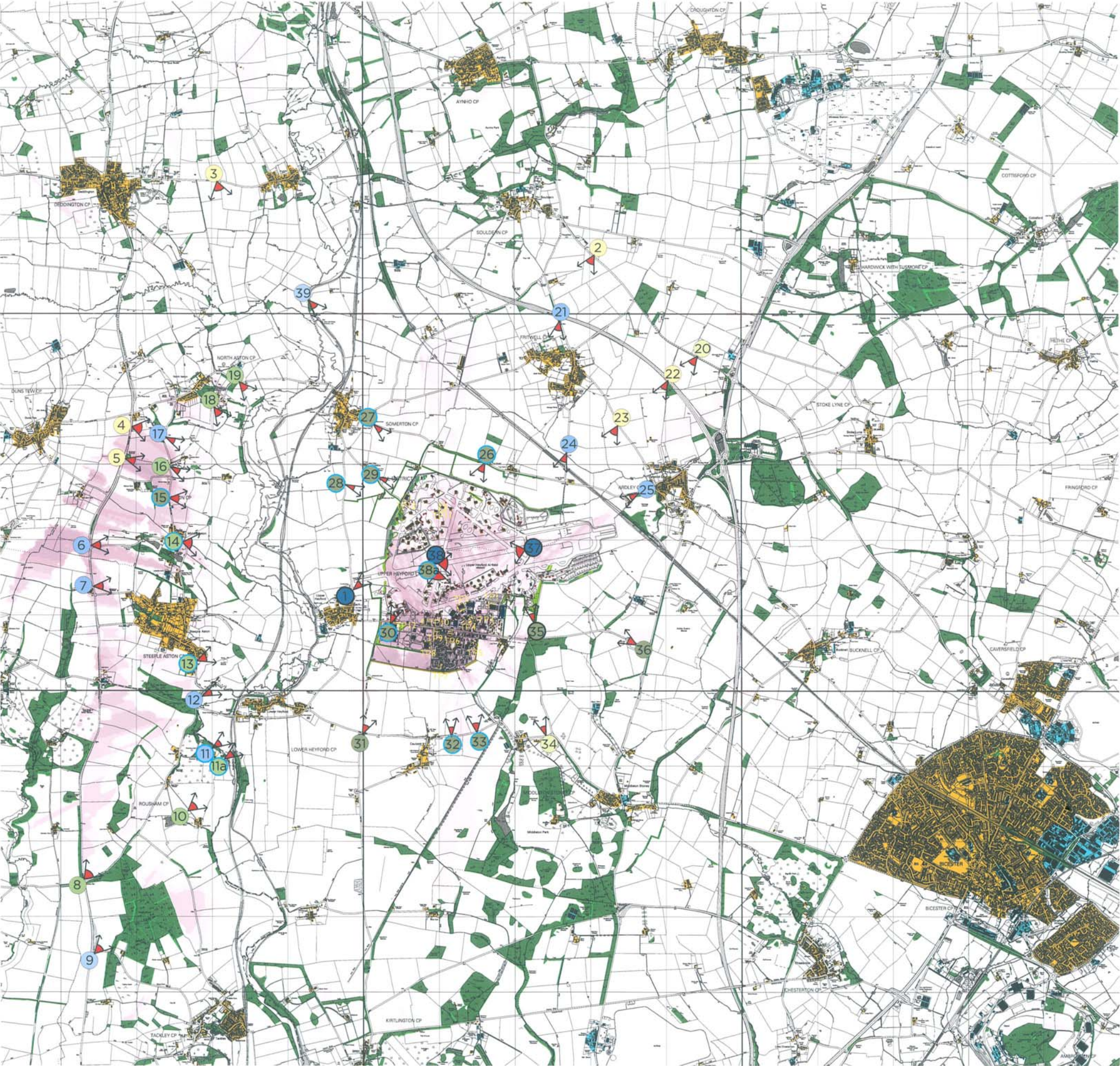


- Visual Assessment
Refer to Table L12
- Major Adverse Impact
 - Moderate Adverse Impact
 - Slight Adverse Impact
 - Negligible Adverse Impact
 - No View
 - Neutral (of any magnitude)
 - Negligible Beneficial Impact
 - Slight Beneficial Impact
 - Moderate Beneficial Impact
 - Major Beneficial Impact
 - Significant
 - Moderately Significant

Target point

Target Point Heights

- TP1 = 8m
- TP2 = 12m
- TP3 = 8m
- TP4 = 8m
- TP5 = 8m
- TP6 = 10m
- TP7 = 8m
- TP8 = 8m
- TP9 = 10m
- TP10 = 8m
- TP11 = 8m
- TP12 = 0m
- TP13 = 0m



- Visual Barriers
- Woodland 15m
 - Settlements 8m
 - Industrial buildings 11m
 - Woodland-18m
 - Hedge-2m
 - New hedge -12m
 - New planting-15m
 - 4m buildings
 - 5m buildings
 - 8m buildings
 - 10m buildings
 - 12m buildings
 - Viewpoints and photograph locations

Plan L9

A Amendment to job title LT JC JC 20/8/07

COOPER
PARTNERSHIP

100% scale
1:1000 scale

Heyford Park

ZVI - 20 YEARS AFTER PLANTING

As shown 07/07 LT ST JC