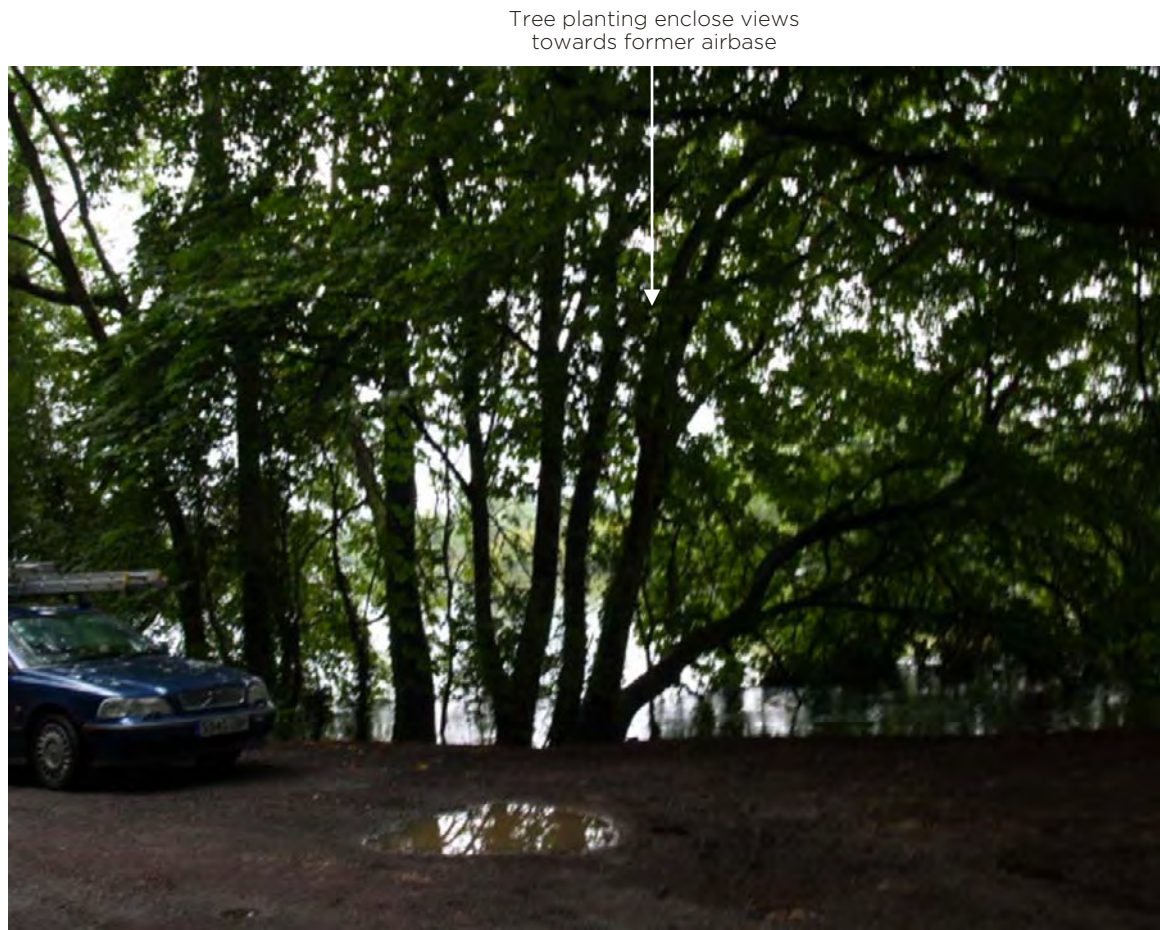
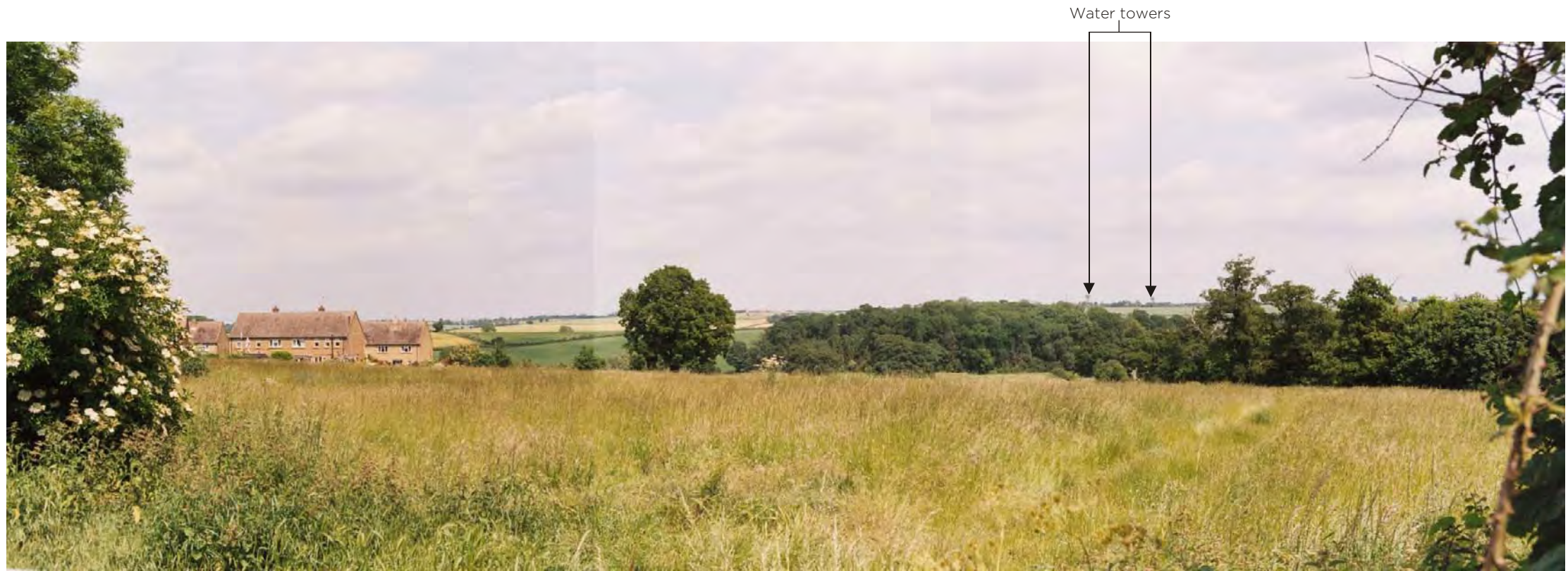




Viewpoint 11A: View from the dying gladiator at Rousham



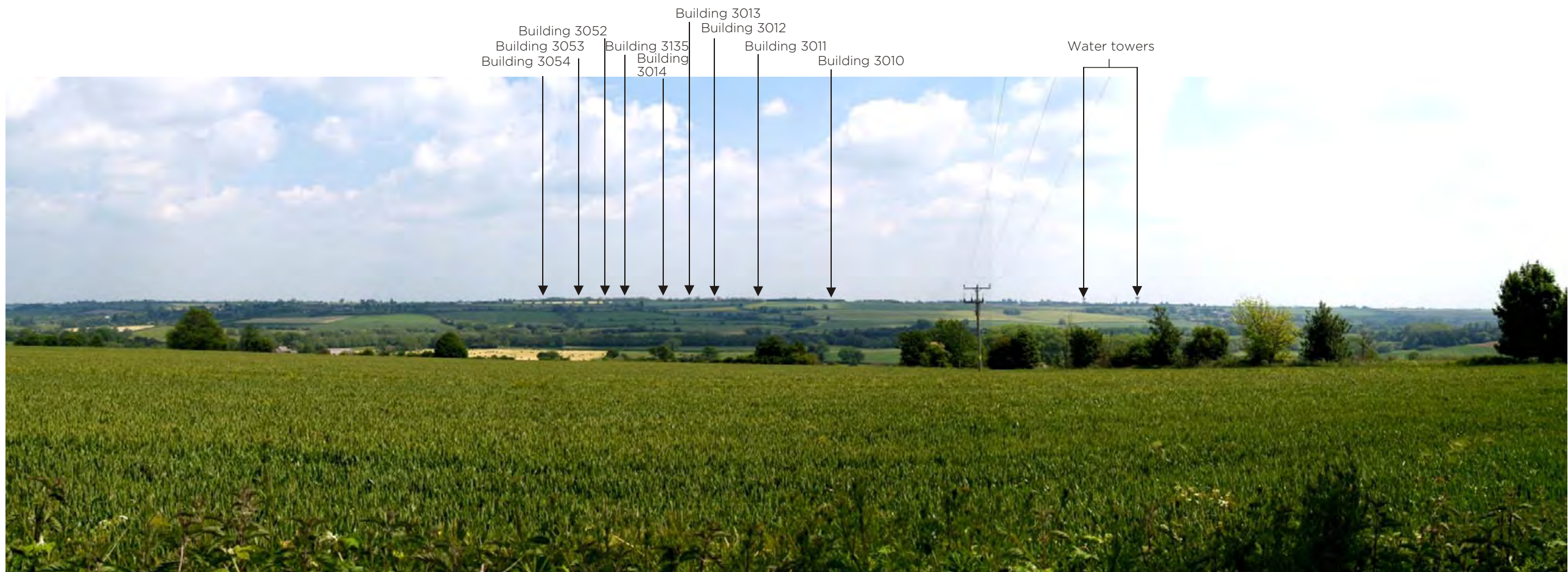
Viewpoint 12: Steeple Aston Road, close to Rousham Junction, in flood conditions, July 2007.



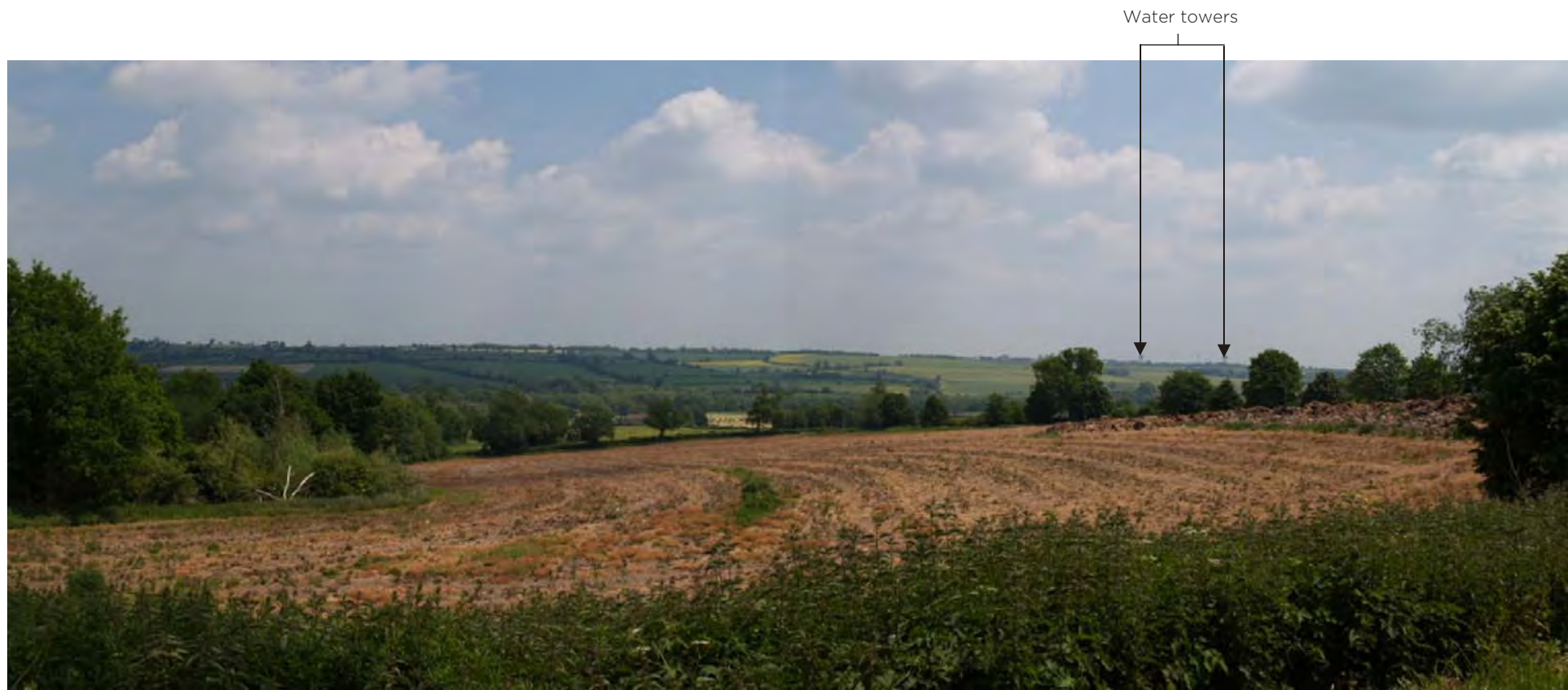
Viewpoint 13: From field gateway on road of south entrance to Steeple Ashton opposite The Beeches



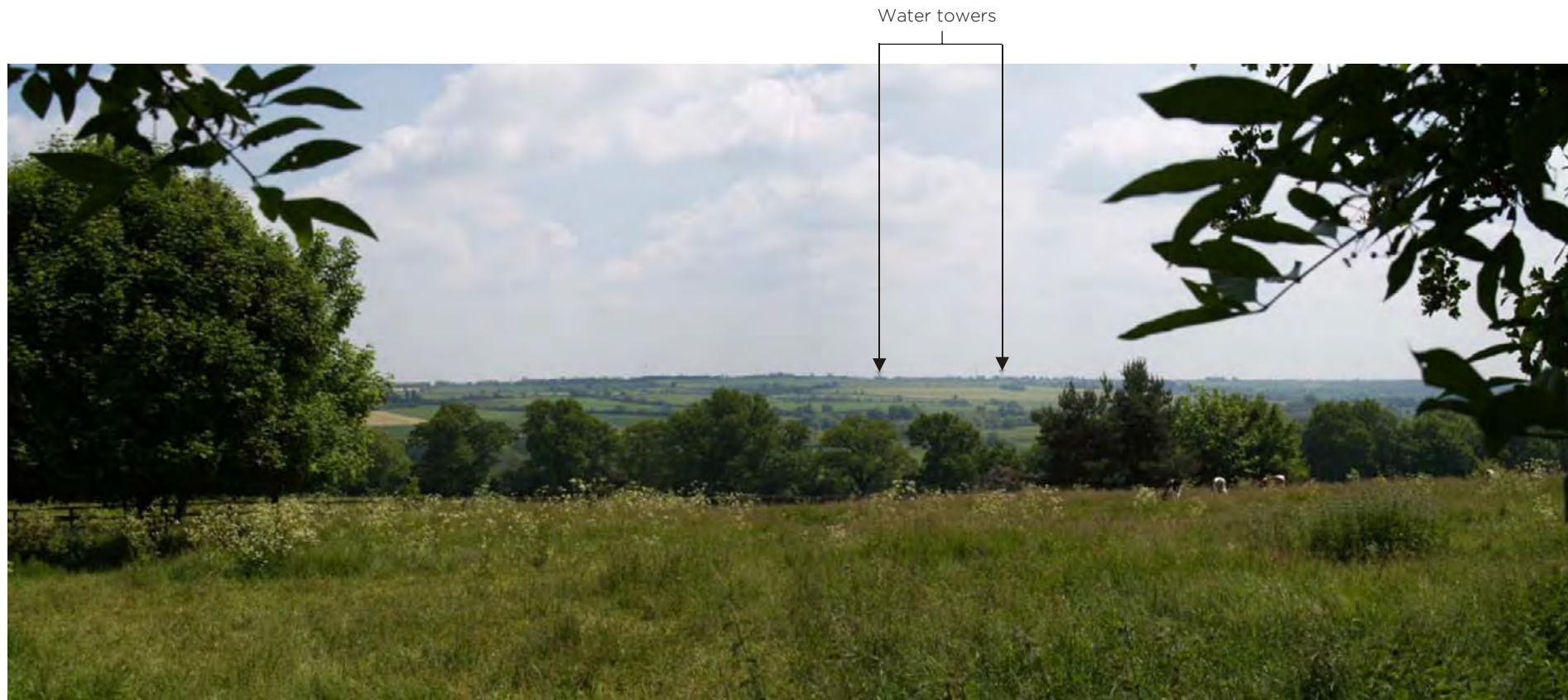
Viewpoint 14: From roadside viewpoint at south entrance to Middle Ashton village



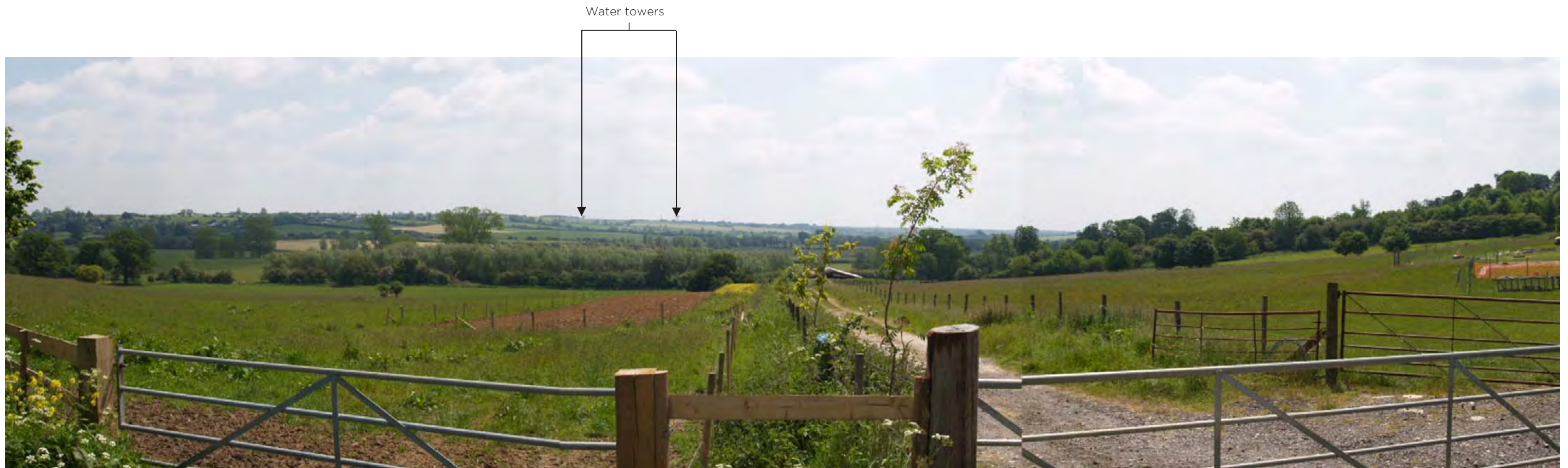
Viewpoint 15: From roadside viewpoint, a passing place between Middle Ashton and North Ashton, looking east towards site



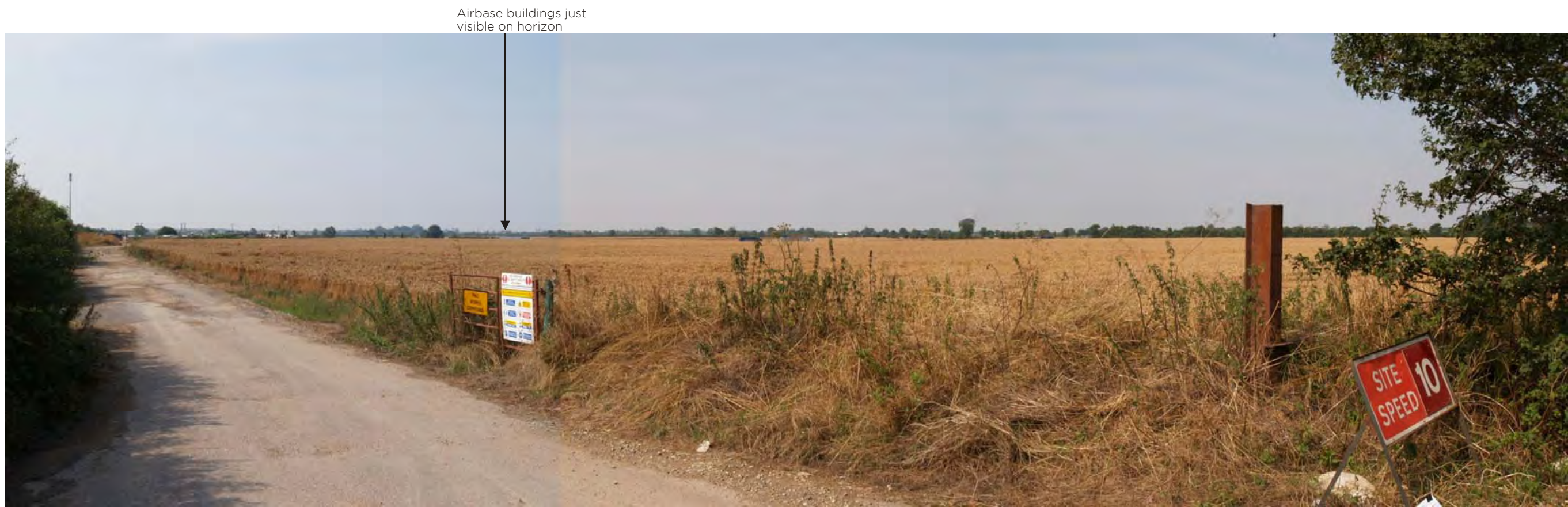
Viewpoint 16: From roadside viewpoint between Middle Ashton and North Ashton, looking east towards site



Viewpoint 18: From North Ashton Church access road and adjoining footpath, looking east-southeast towards site



Viewpoint 19 : From roadside on east approach to North Ashton, just to the east of the drive entrance to North Ashton Hall, looking southeast towards site



Viewpoint 20: From northeast on B4100 looking southwest towards site

COOPER
PARTNERSHIP

Title **Heyford Park**
Job no.1802 Sheet no.11/23 Date22/08/06
Checked ND Approved JC

All photographs have been taken with a 50mm focal length lens and processed as the standard size of 6 by 4. Panoramas may have been cropped but have not been altered or resized.