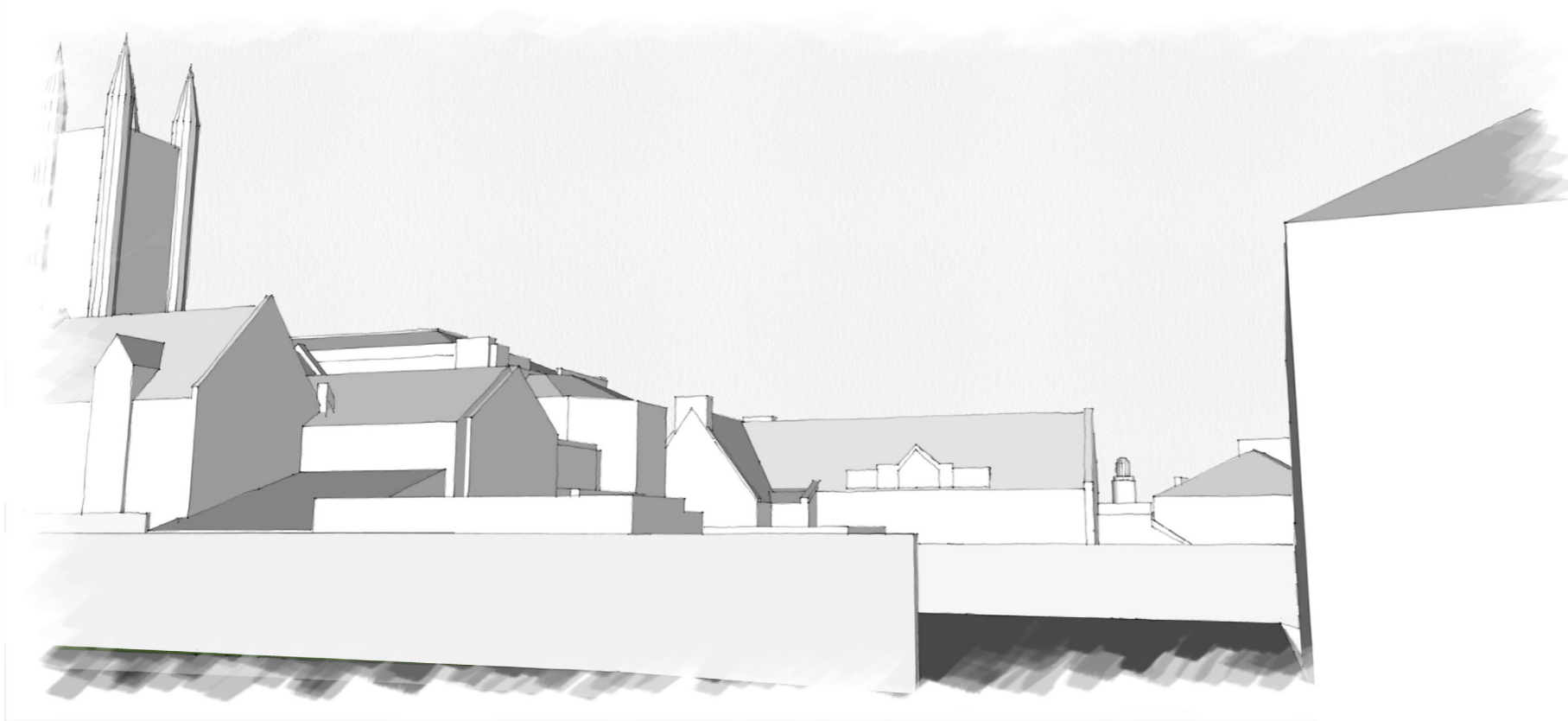
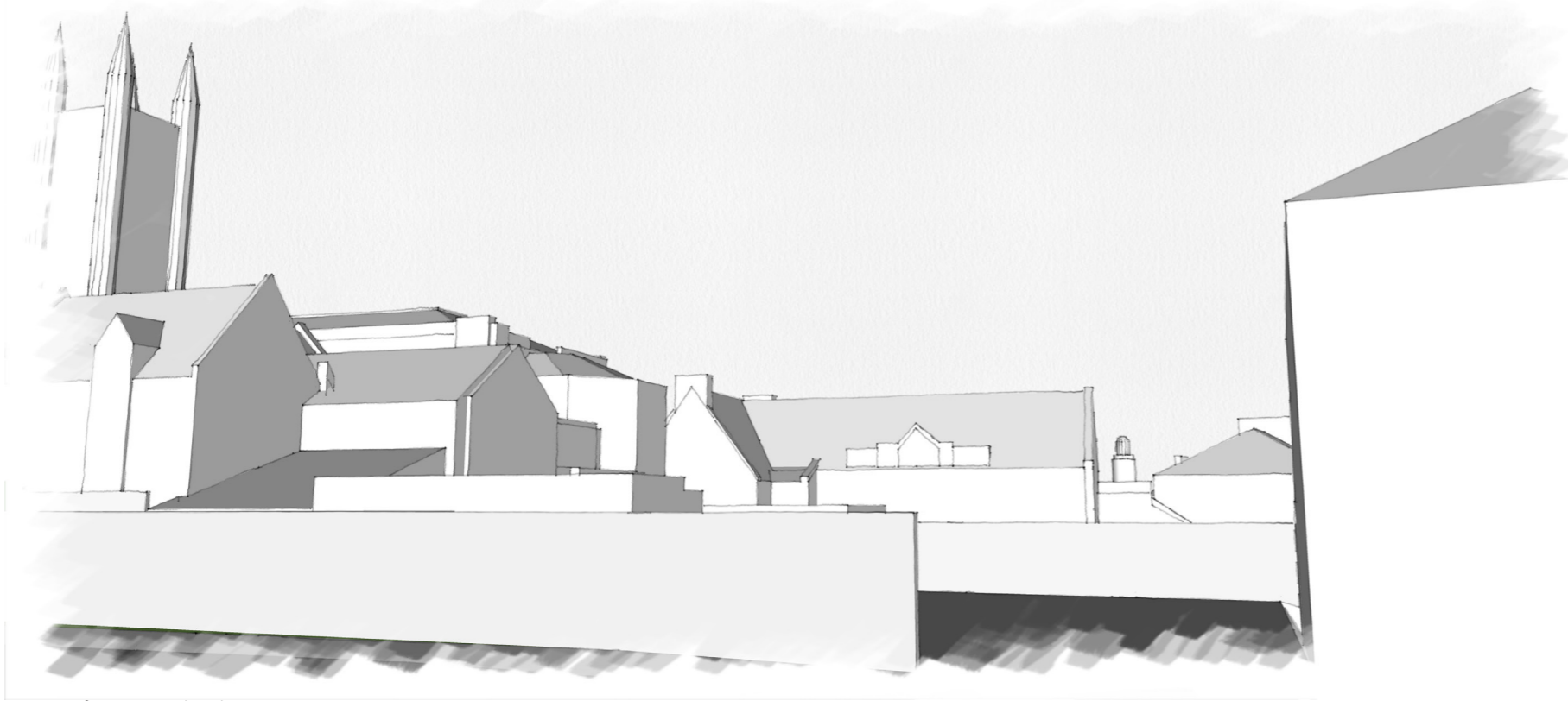


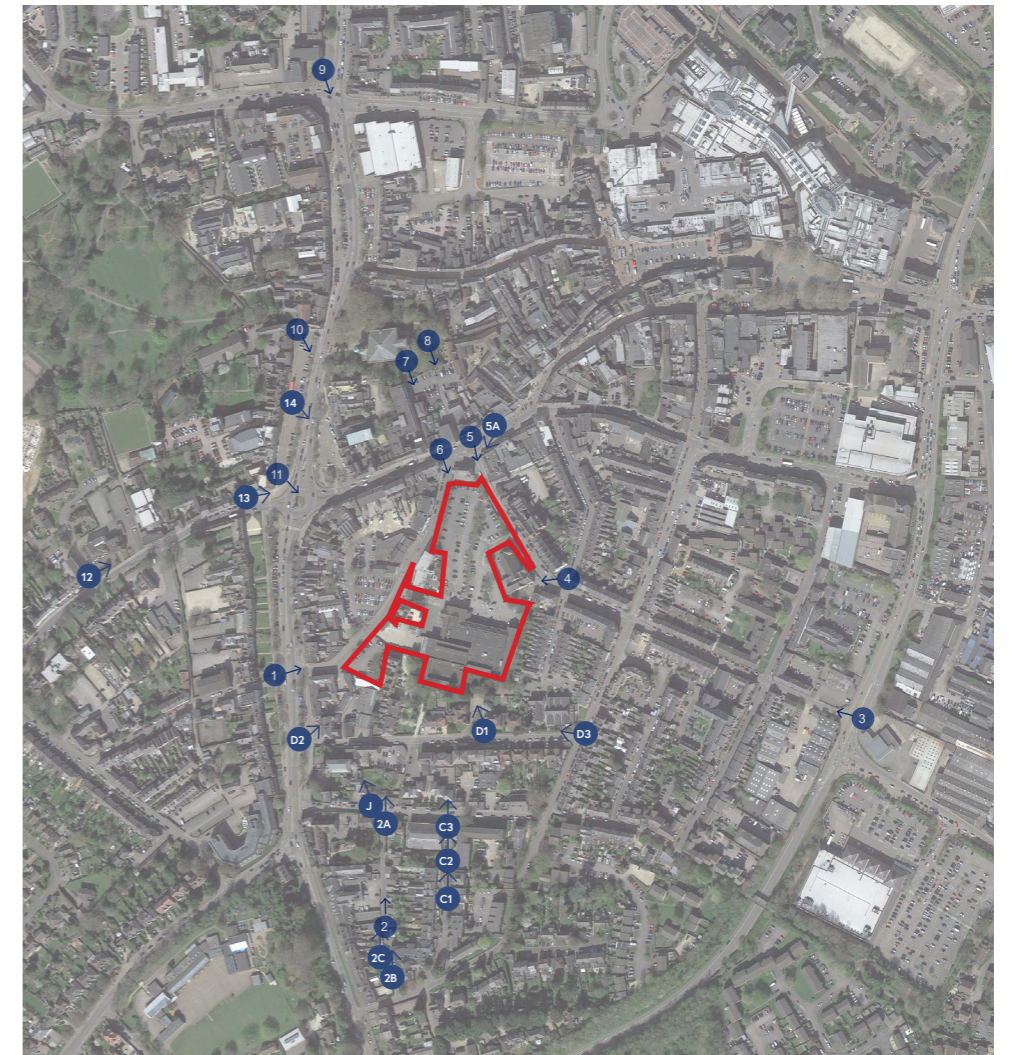
12.0 St John's Road VPJ



View of Existing



View of Proposed Scheme

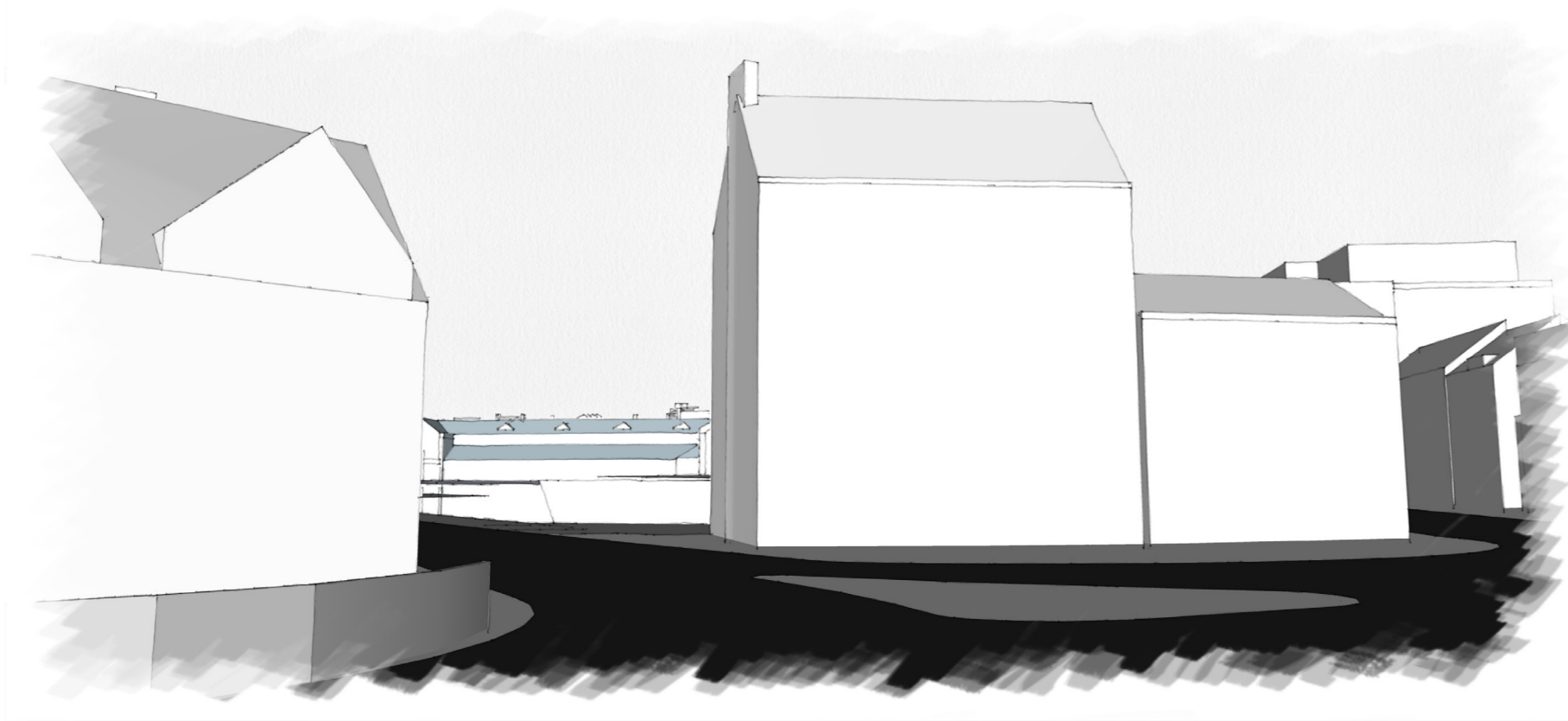


VP Key

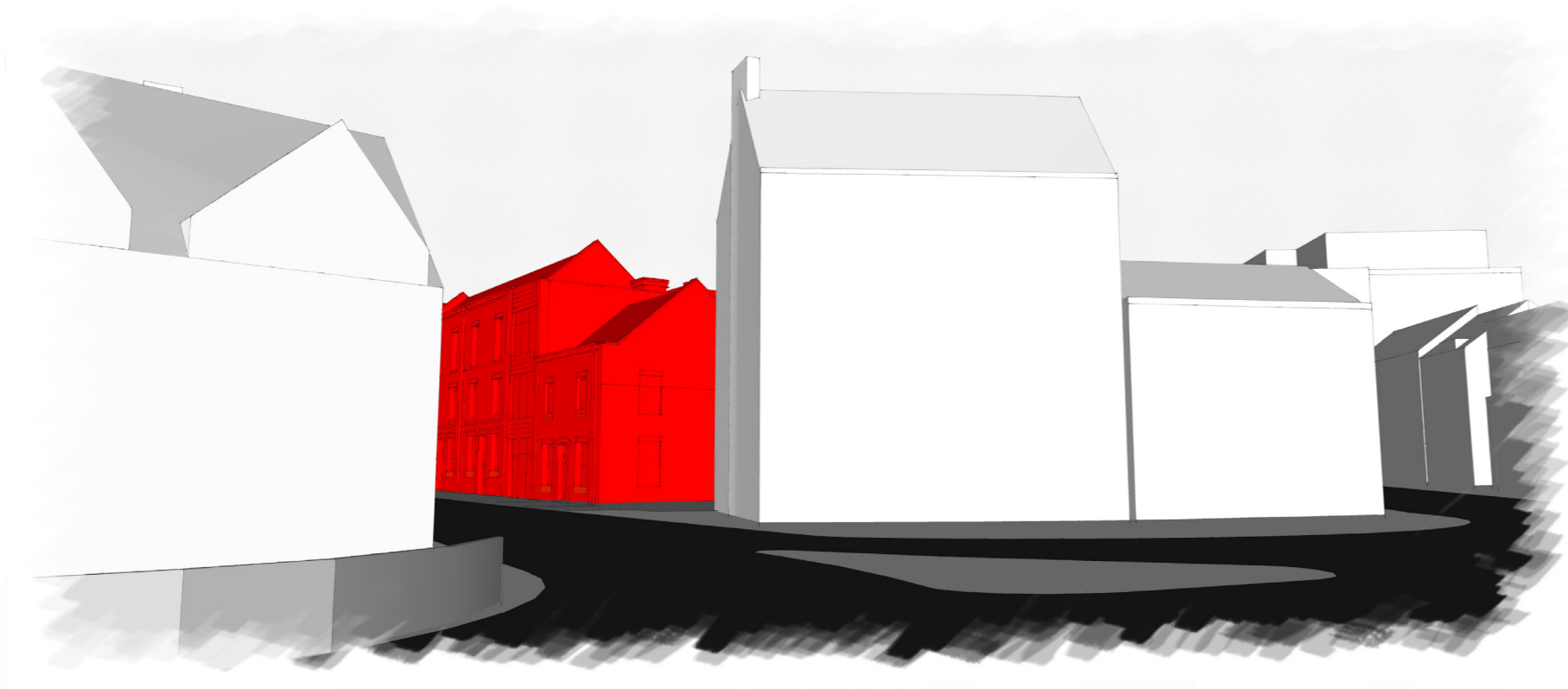


Proposed Scheme with model trees (indicative only)

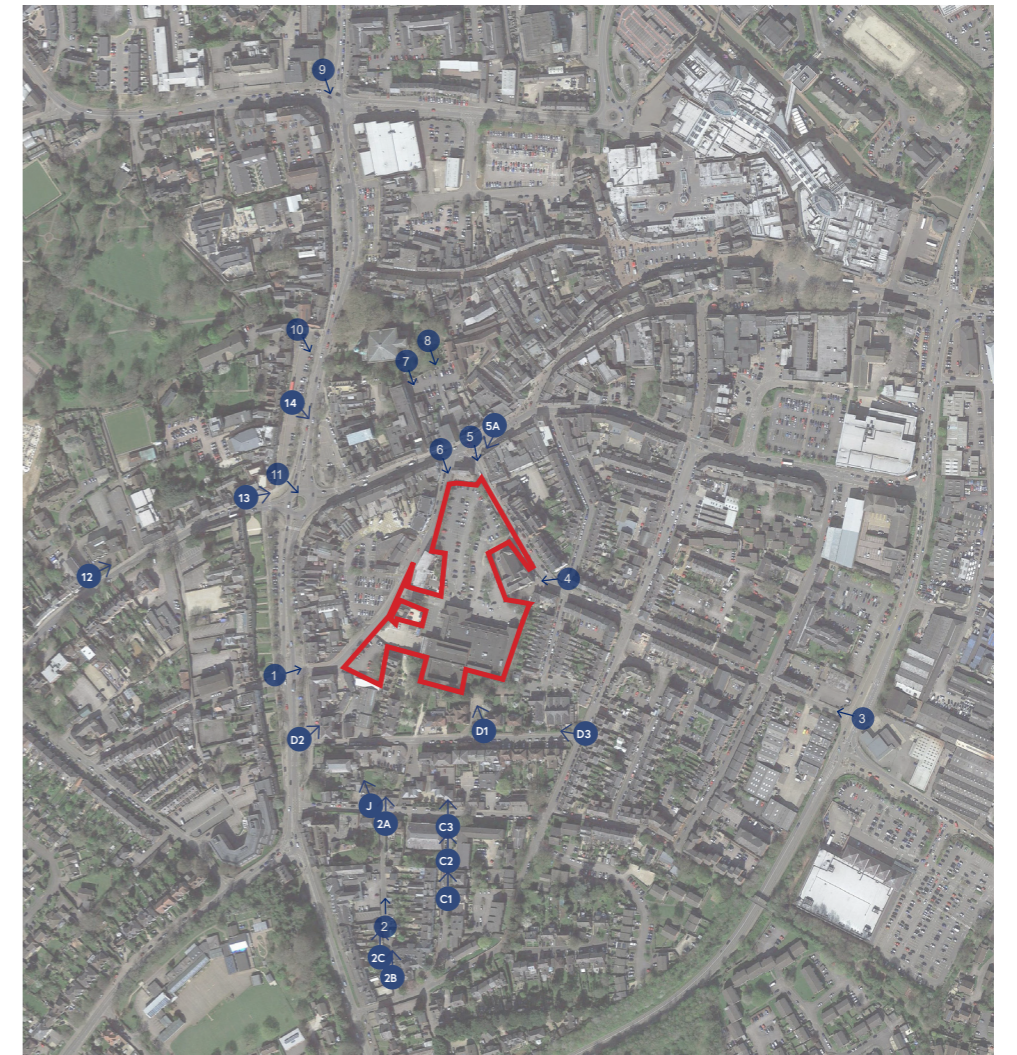
13.0 VP5A



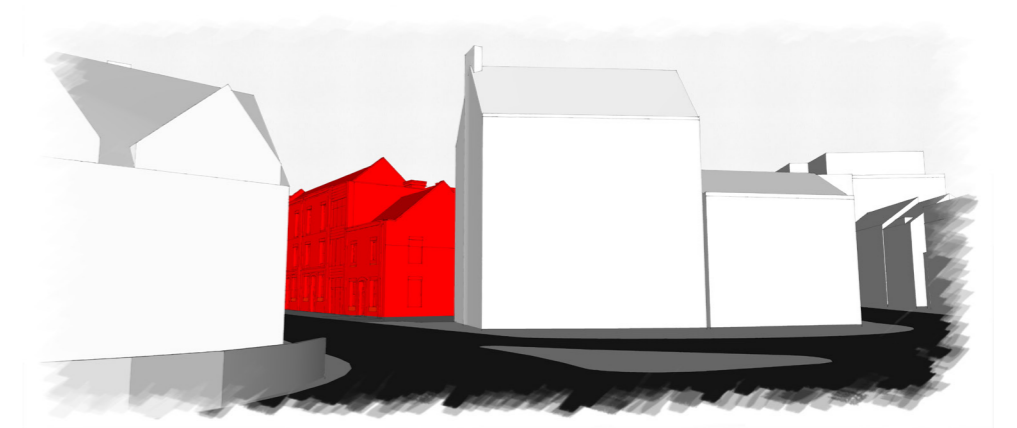
View of Existing



View of Proposed Scheme

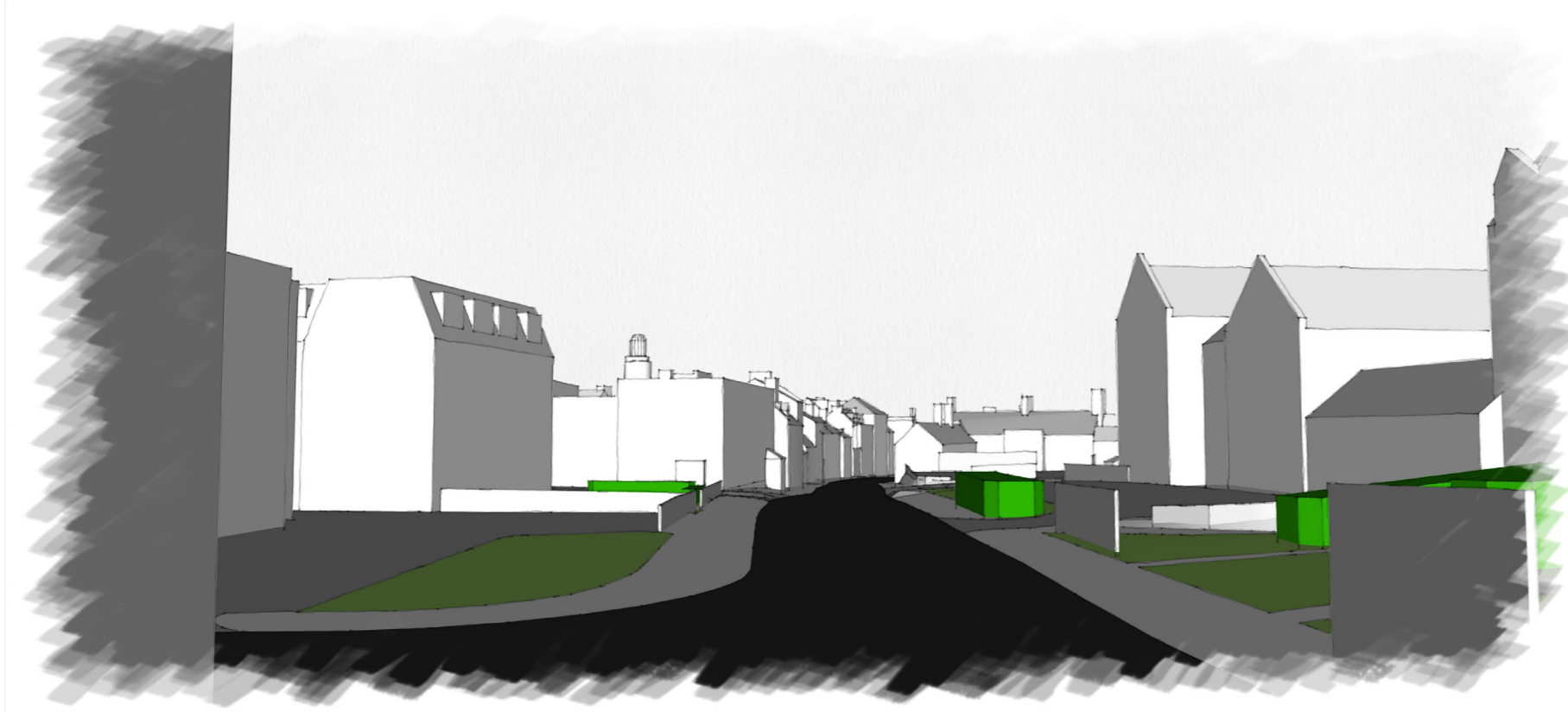


VP Key

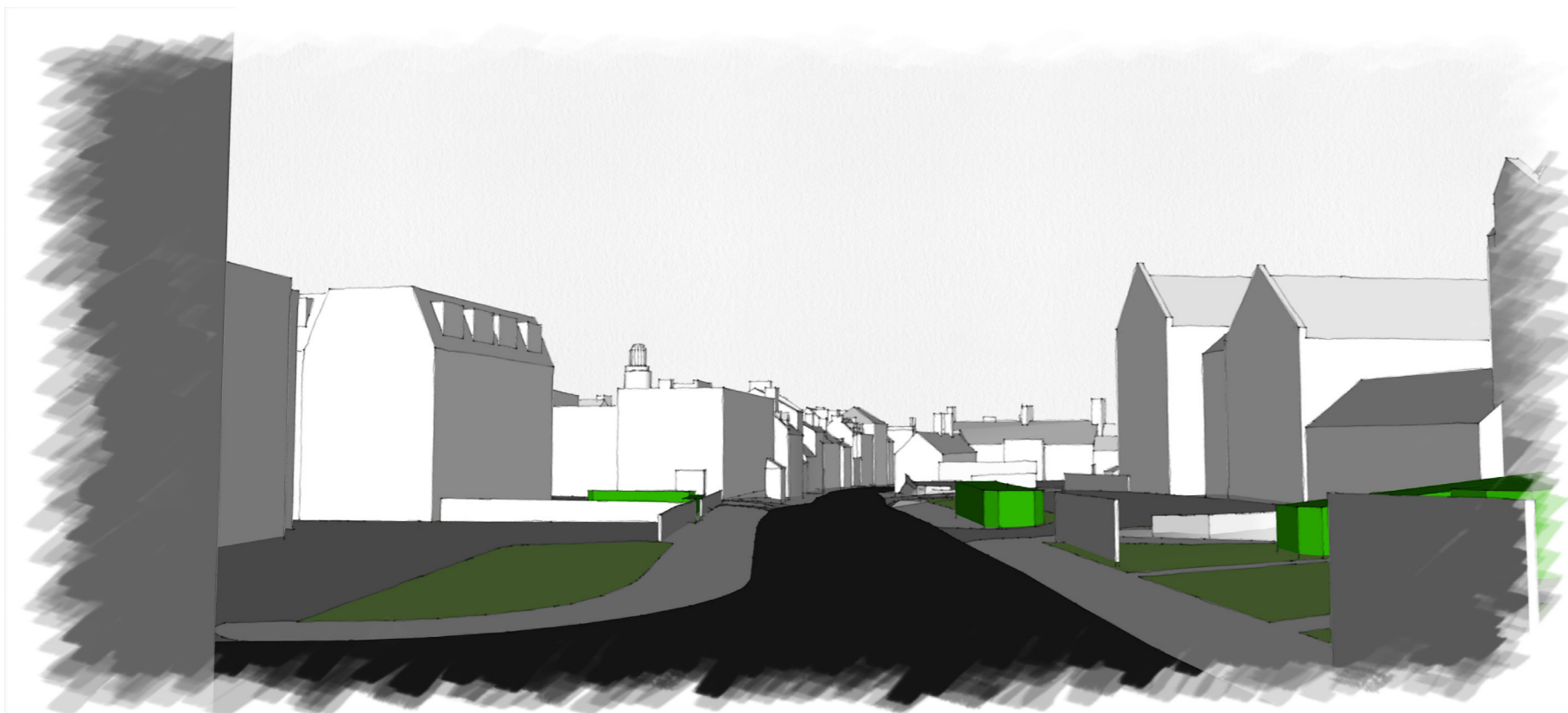


Proposed Scheme with model trees (indicative only)

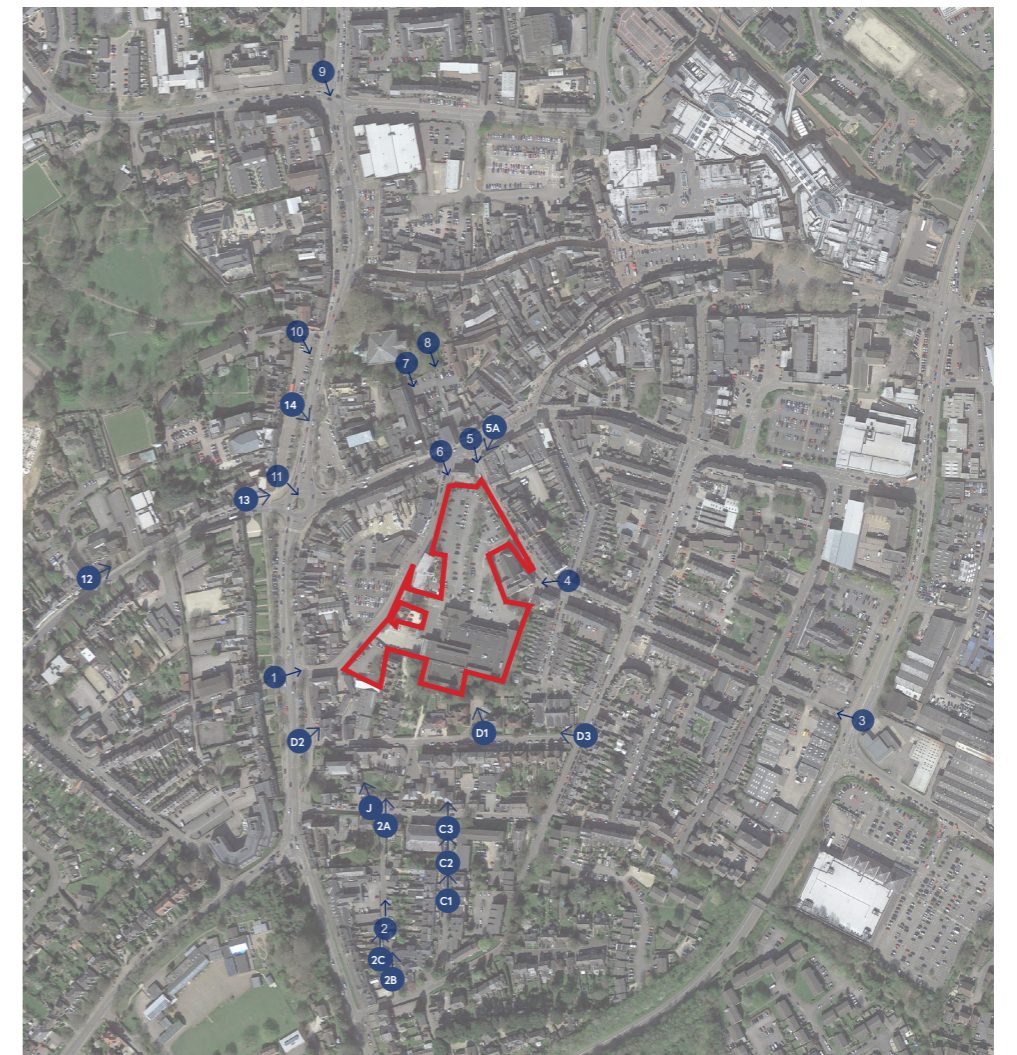
14.0 VP12



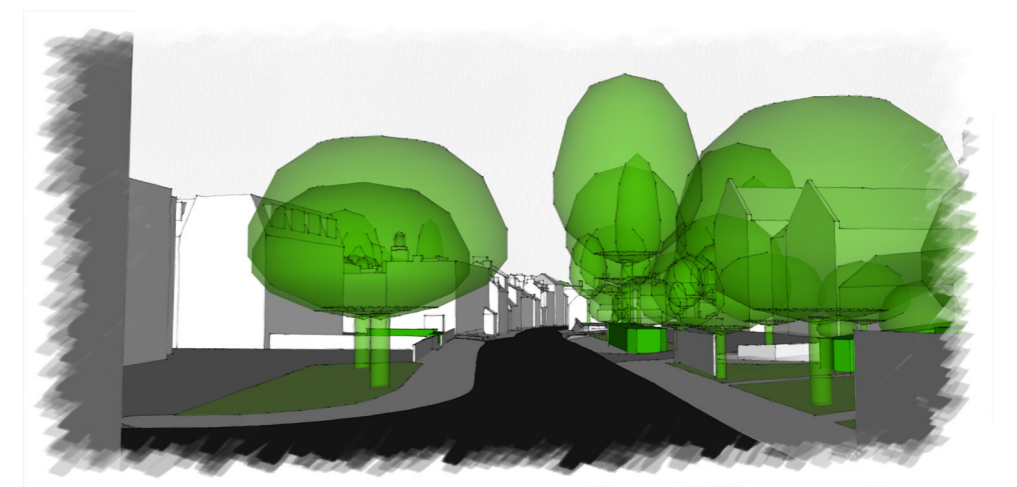
View of Existing



View of Proposed Scheme

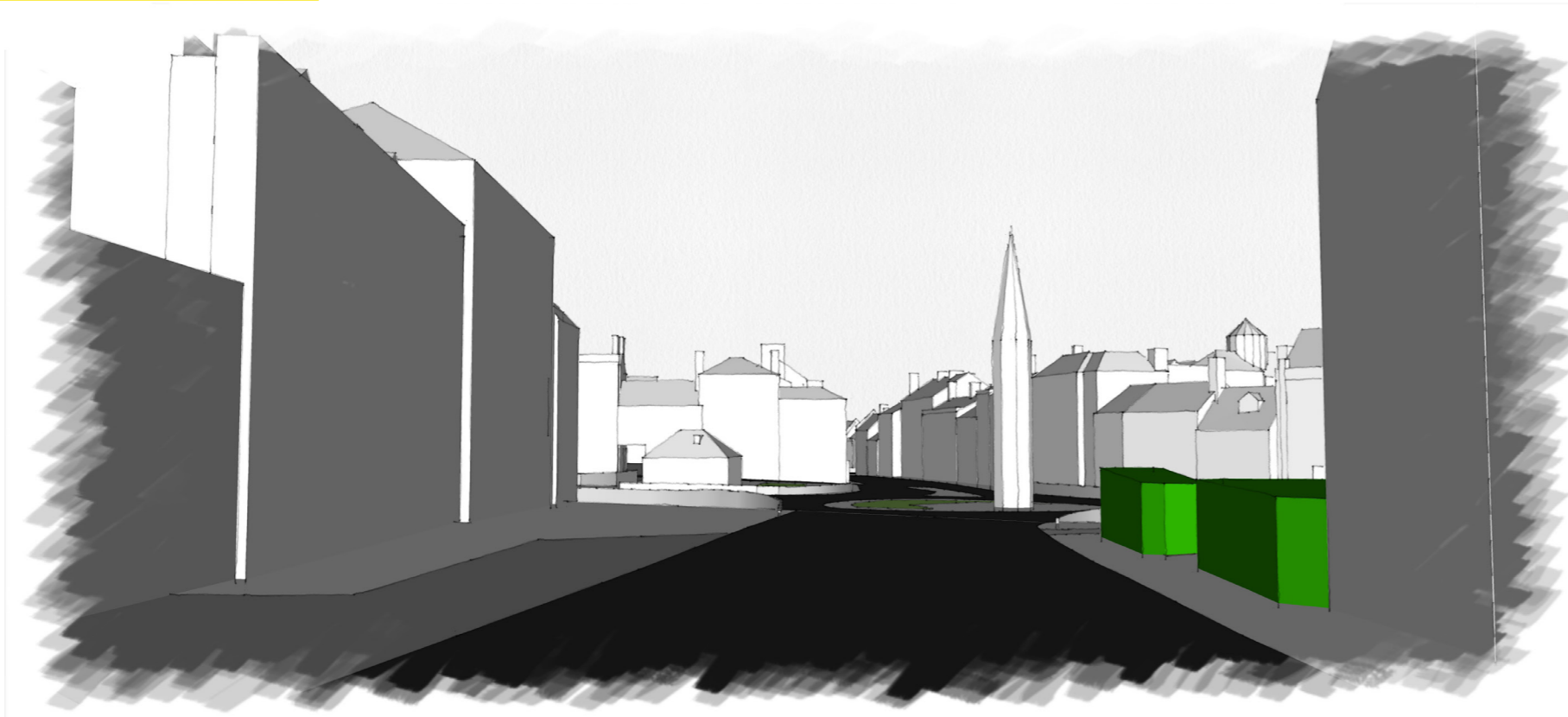


VP Key

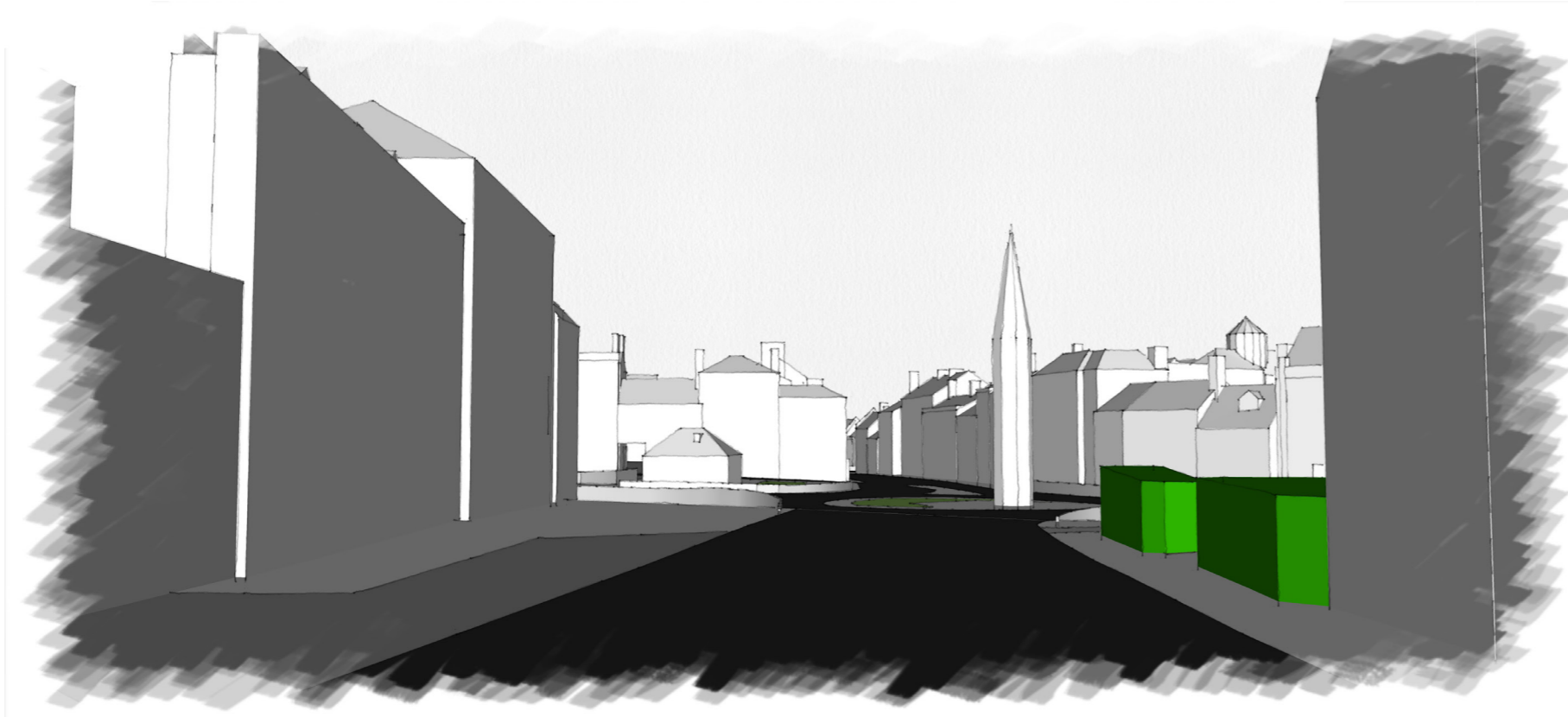


Proposed Scheme with model trees (indicative only)

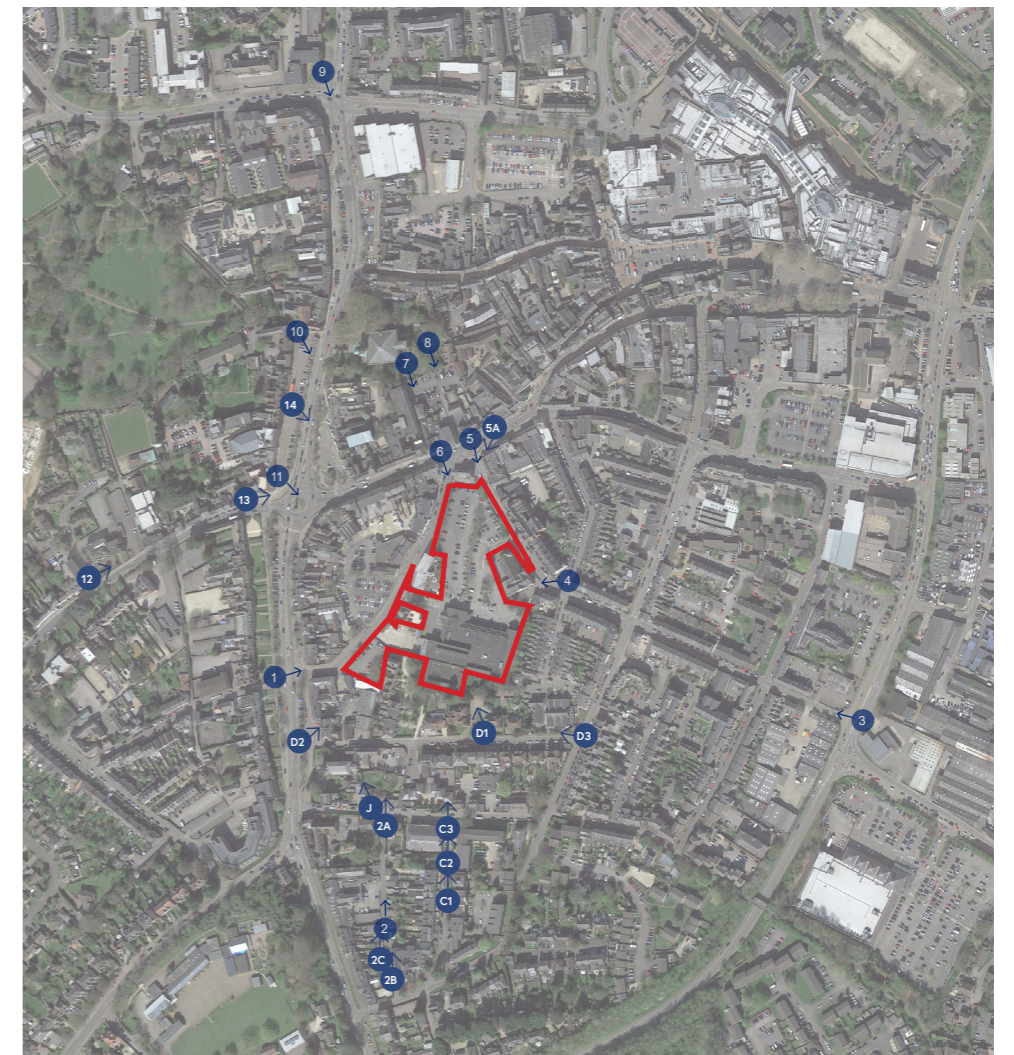
15.0 VP13



View of Existing



View of Proposed Scheme



VP Key



Proposed Scheme with model trees (indicative only)

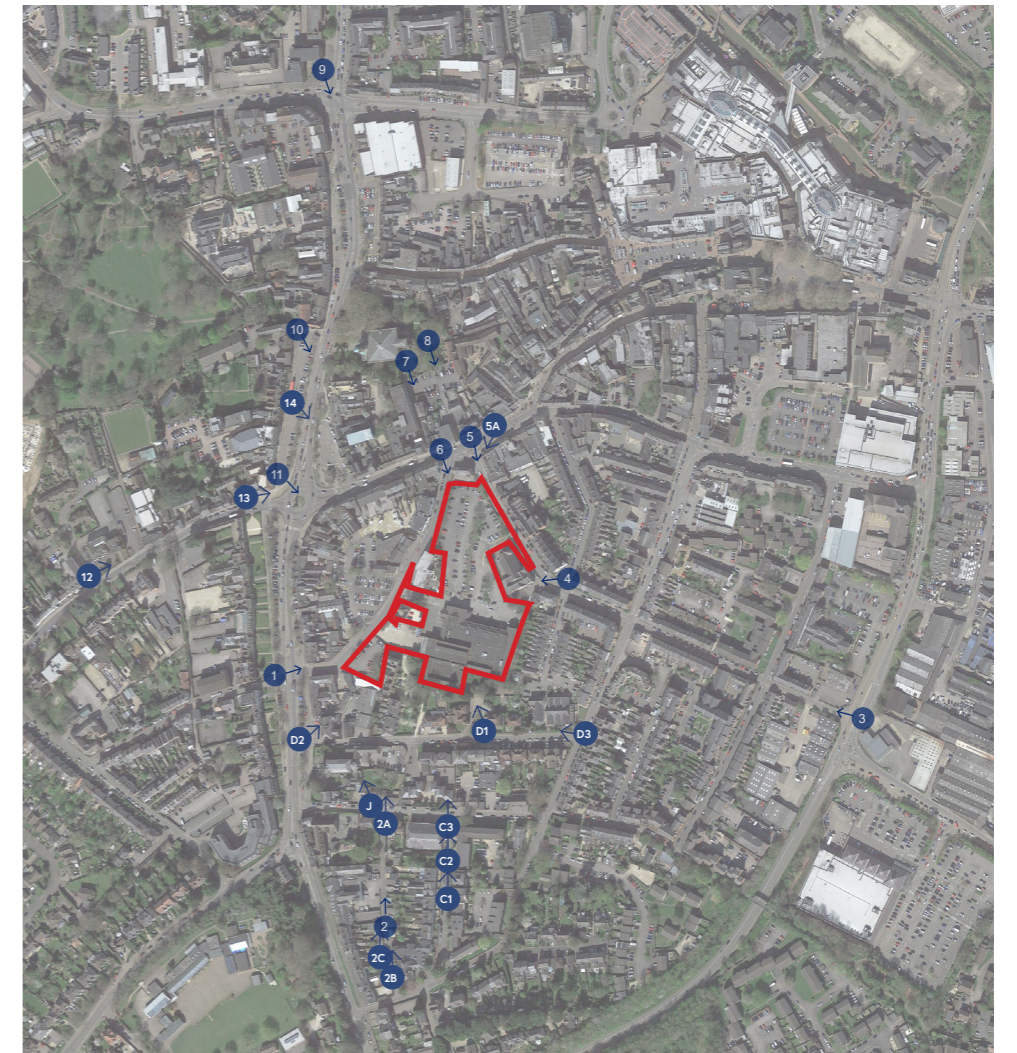
16.0 VP14



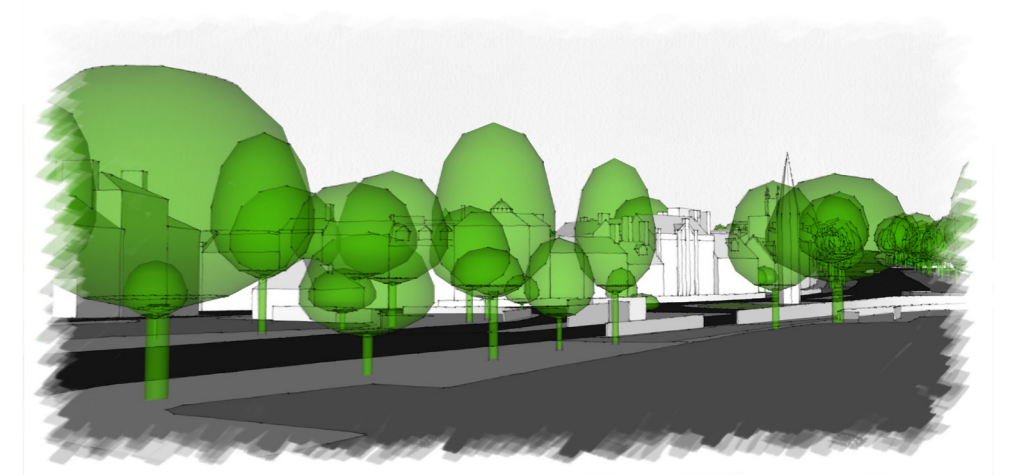
View of Existing



View of Proposed Scheme



VP Key



Proposed Scheme with model trees (indicative only)

Corstorphine & Wright

Contact us to discuss your project

 www.corstorphine-wright.com

 contact@cw-architects.co.uk

 [corstorphine-wright](https://www.linkedin.com/company/corstorphine-wright)

 [@cwrightarch](https://twitter.com/cwrightarch)

 [corstorphinewright](https://www.instagram.com/corstorphinewright)

  2021 MEMBER



BIDWELLS

Bidwells is a trading name of Bidwells LLP,
a limited liability partnership, registered in
England and Wales with number OC344553.
Registered office: Bidwell House,
Trumpington Road, Cambridge CB2 9LD