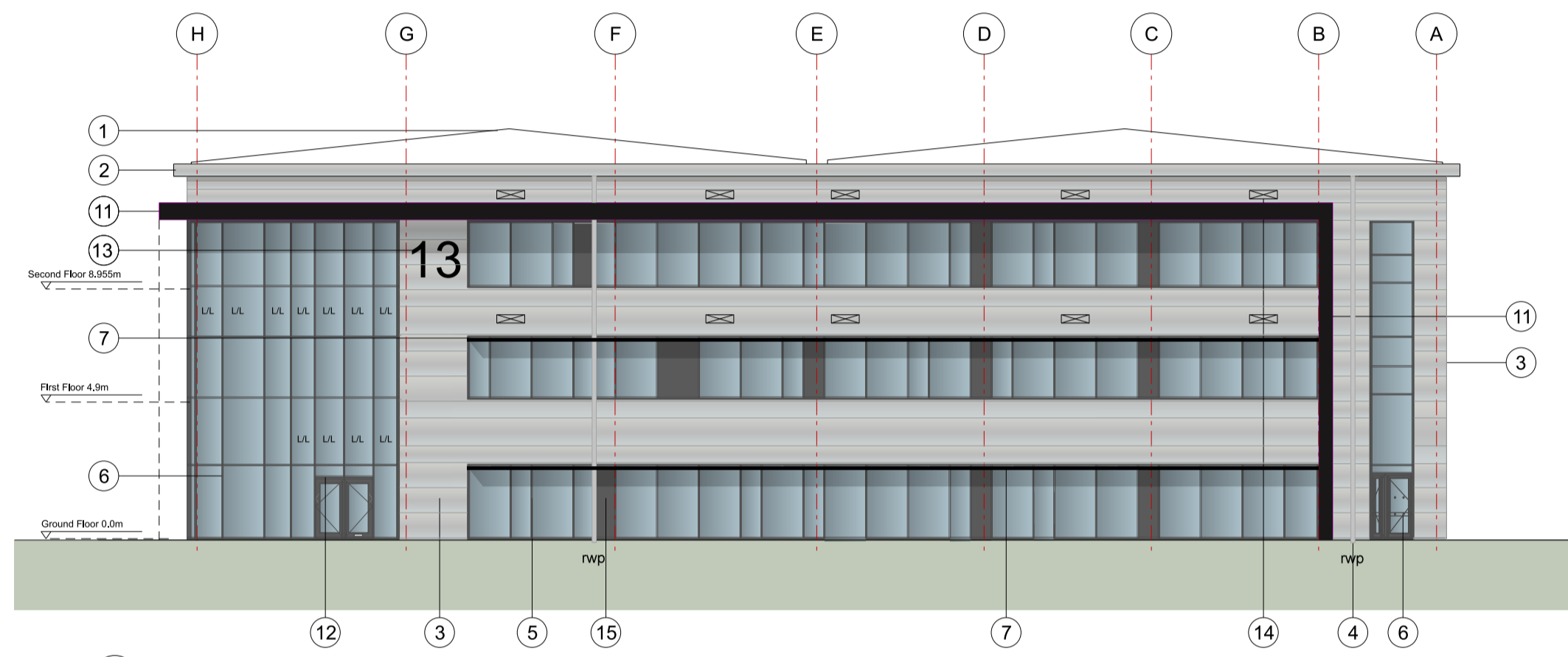


NOTES

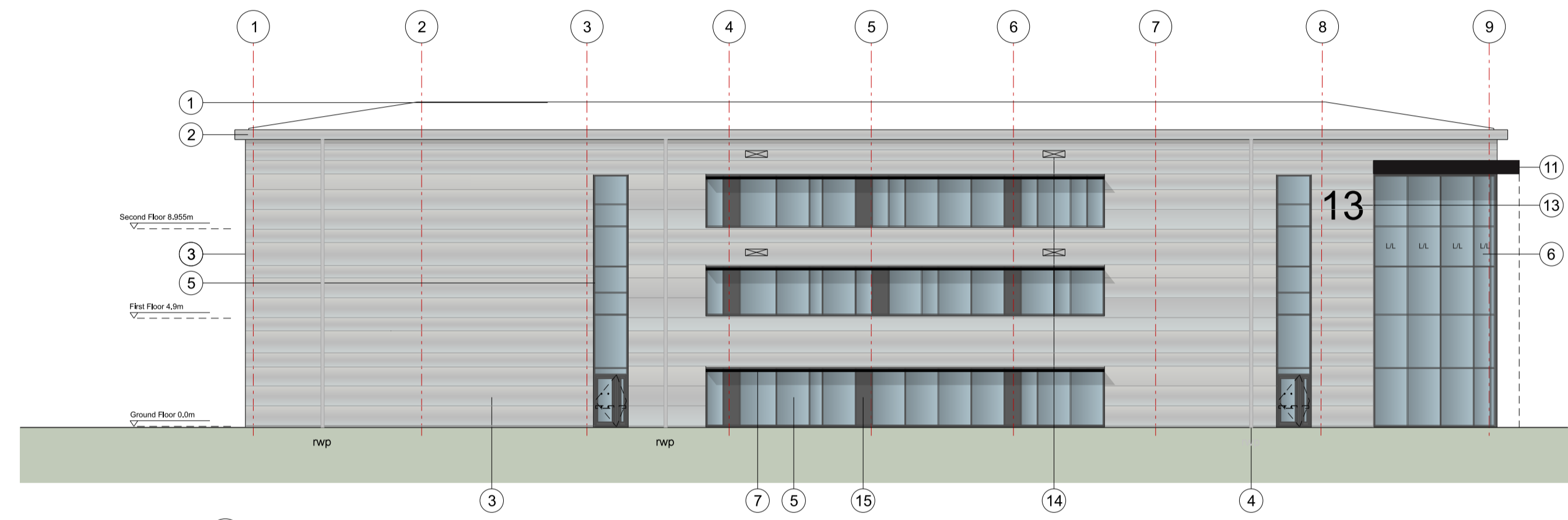
Reproduced from the Ordnance Survey map with the permission of the Controller of Her Majesty's Stationery Office, © Crown Copyright.

C A Cornish & Associates Ltd Licence no LIG0908.

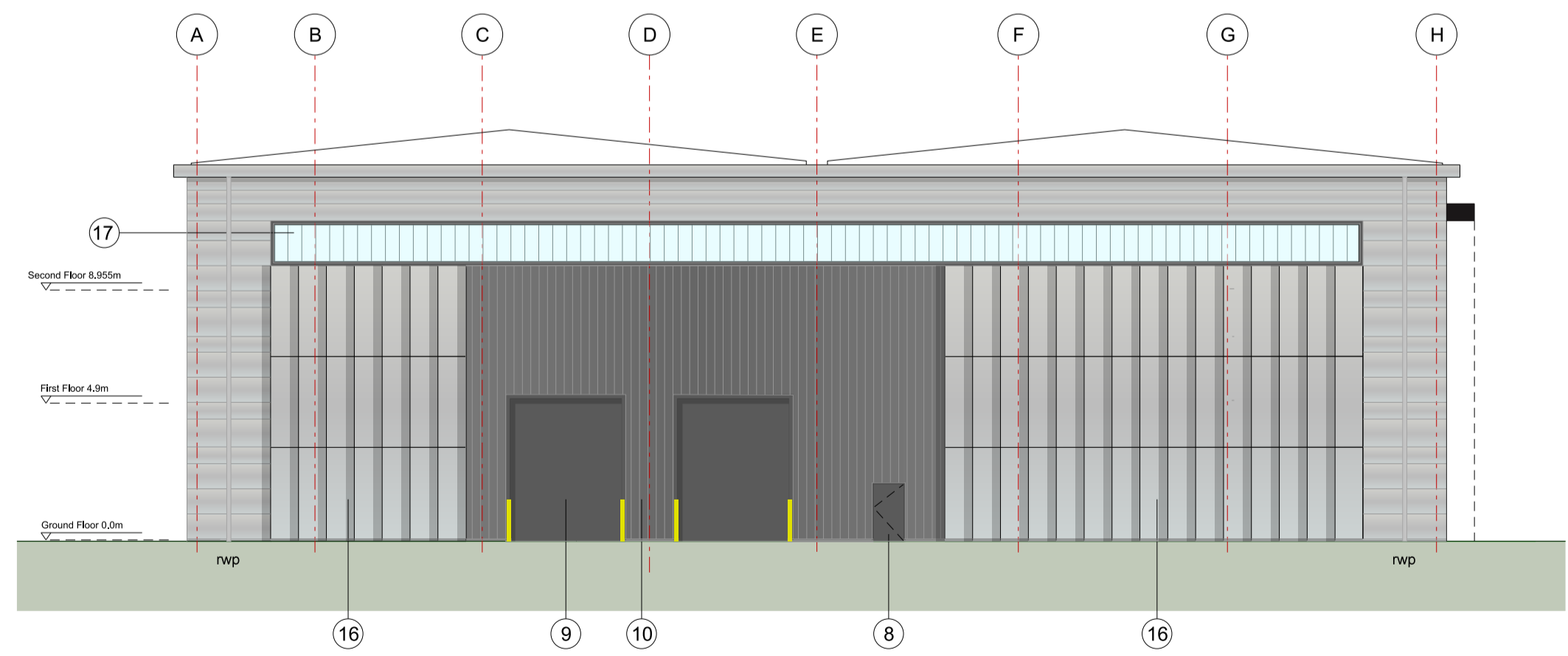
Subject to Statutory Approvals.



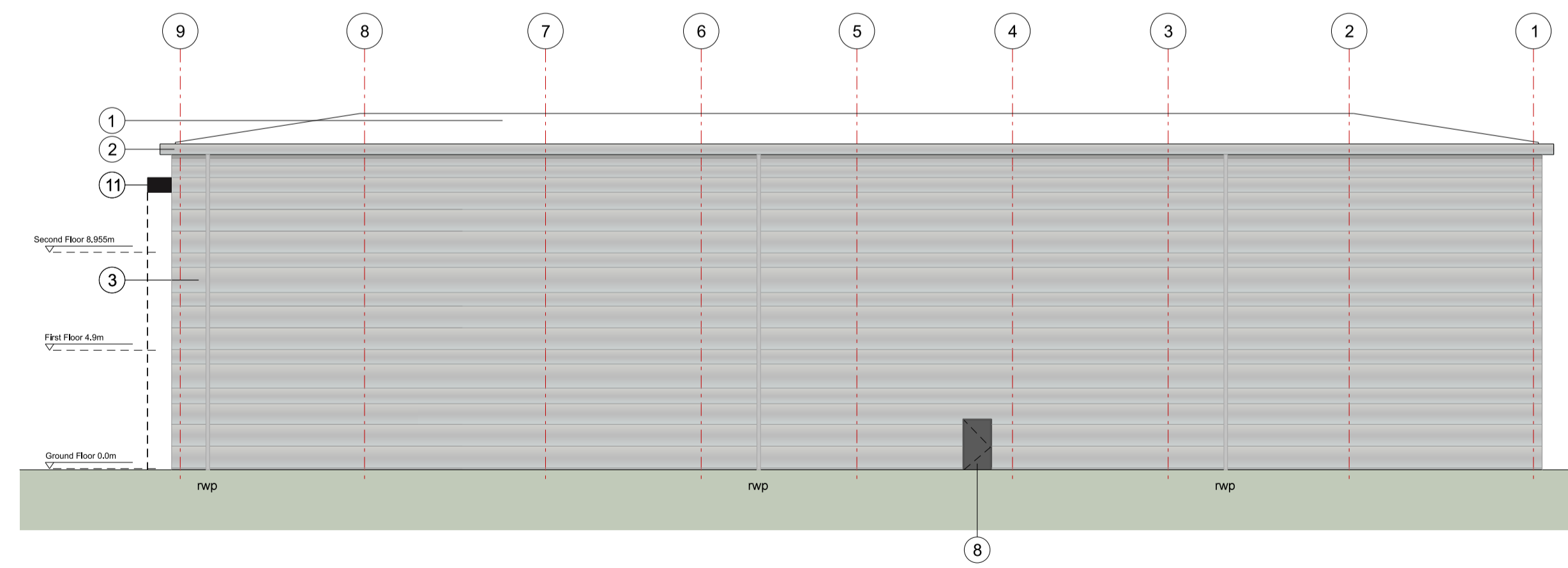
01 UNIT 13  
007 south east facing - elevation



02 UNIT 13  
007 south west facing - elevation



03 UNIT 13  
007 north west facing - elevation



04 UNIT 13  
007 north east facing - elevation

KEY

- 1 Built-up metal roof system  
Colour: HPS200 Ultra Goosewing Grey  
RAL 7036
  - 2 Eaves and verge flashings.  
Colour: Sirius
  - 3 Horizontal Microrib composite panel system  
Color: Sirius RAL 9006
  - 4 Rainwater pipes. Colour: Colour:  
Colorcoat Prisma - Sirius RAL 9006
  - 5 PPC Aluminium double glazed windows.  
Colour: Anthracite RAL 7016
  - 6 PPC Aluminium double glazed curtain walling  
and door frames.  
Colour: Anthracite RAL 7016
  - 7 Brise Soleil, colour to match window frame
  - 8 Steel fire escape doors.  
Colour: Anthracite RAL 7016
  - 9 Loading doors.  
Colour: Anthracite RAL 7016
  - 10 Vertical Trapezoidal built-up cladding system -  
Corus Colorcoat Prisma - Zeus
  - 11 Feature canopy, colour: Black
  - 12 Freestanding glass canopy. colour: Anthracite
  - 13 Unit number
  - 14 Louvres - colour to match cladding  
(to M&E consultant specification)
  - 15 Decorative coloured glass feature insulated  
cassettes
  - 16 Rainscreen cladding, colour: Sirius
  - 17 Translucent cladding panel.  
CA Profiles therma-light CF40
- L/L Look-a-like panels - obscured glass

Rev	Description	Chk	Date
-----	-------------	-----	------

27 Greville Street  
London EC1N 8SU

tel +44(0)20 7400 2120

enquiries@cornisharchitects.com  
www.cornisharchitects.com

RIBA  
Chartered Practice

cornisharchitects

Project Title. **CATALYST PHASE 4**

Drawing Title. **UNIT 13  
ELEVATIONS**

Drawing Status. **TOWN PLANNING**

Scale. **0 2 metres 16**

Drawn By:	Scale:	Date:	Chk'd By:
J B	1:200 @ A1	11/04/2024	S M



Drawing No. **23022 - TP - 007** Rev. **-**