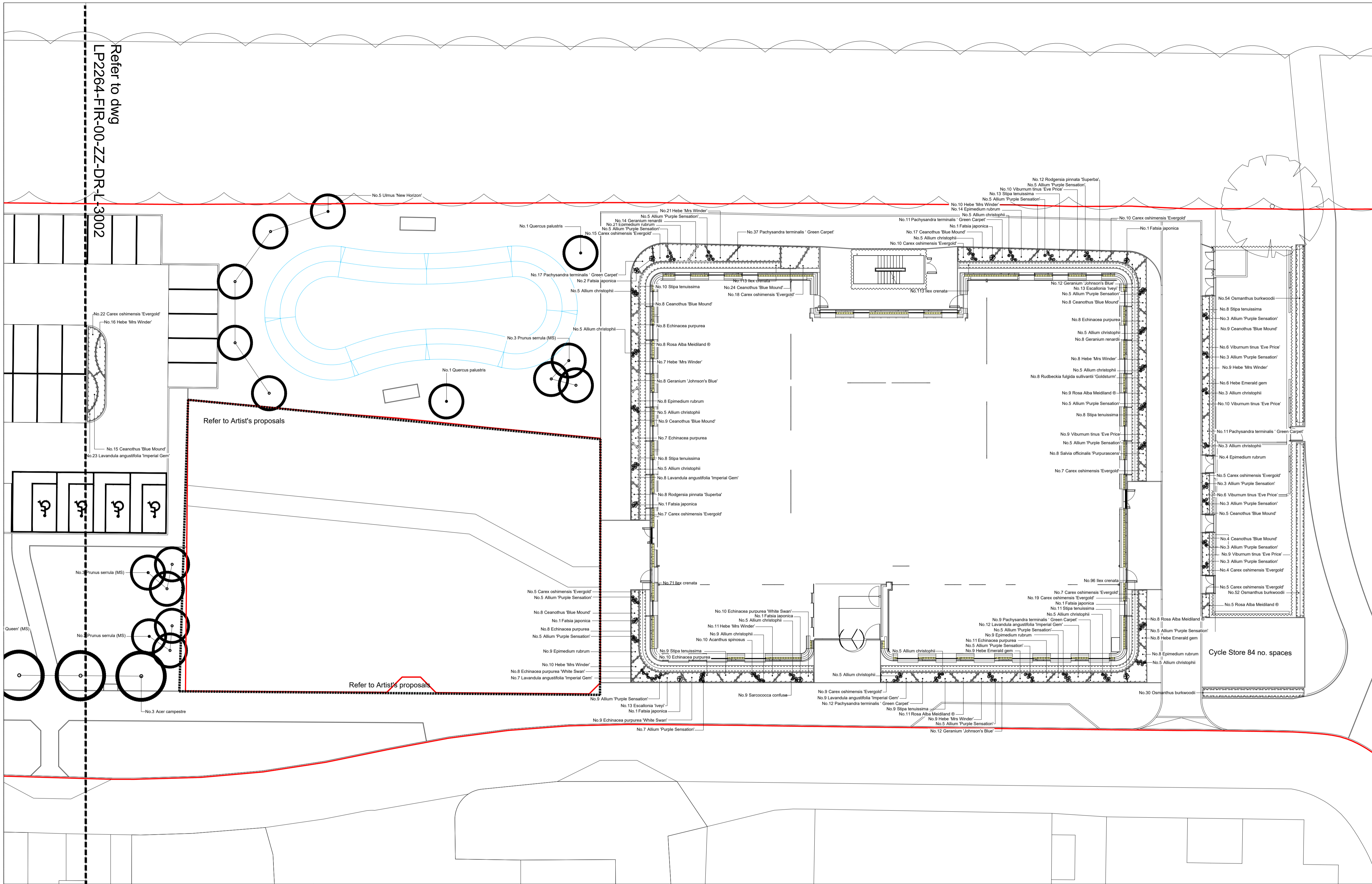


Refer to dwg  
LP2264-FIR-00-ZZ-DR-L-3002



Header

Trees	Number	Girth	Height	Species	Pot Size	Specification
	11	20-25cm		Acer campestre	MS	Semi-Mature Clear Stem 175-200 4x RB
	9	3.0-3.5m		Amelanchier lamarckii (MS)	120L	MS Multi-Stemmed
	9	3.0-3.5m		Betula utilis jacquemontii 'Snow Queen' (MS)	120L	MS Multi-Stemmed
	3	3.0-3.5m		Cercis canadensis 'Forest Pansy'	120L	Multi-Stemmed 3/5 brks
	4	3.0-3.5m		Cornus kousa chinensis (SM)	120L	
	10	20-25cm		Prunus serrula (MS)	120L	MS Multi-Stemmed
	9	20-25cm		Quercus palustris		Semi-Mature Clear Stem 175-200 4x RB
	5	20-25cm		Sorbus aucuparia		Clear Stem 175-200 4x Semi-Mature
				Ulmus 'New Horizon'		Semi-Mature Clear Stem 175-200 4x RB

Shrubs	Number	Species	Pot Size	Specification	Density
	135	Acanthus spinosus	3L		5/m <sup>2</sup>
	183	Allium 'Purple Sensation'	5L		Counted
	117	Allium christophii	3L		Counted
	51	Brachybotrys monoensis	3L		5/m <sup>2</sup>
	382	Ceanothus 'Blue Mound'	3L		5/m <sup>2</sup>
	117	Echinacea purpurea	3L		5/m <sup>2</sup>
	109	Echinacea purpurea 'White Swan'	3L		5/m <sup>2</sup>
	296	Epimedium rubrum	3L		5/m <sup>2</sup>
	178	Escallonia 'Ivey'	3L		5/m <sup>2</sup>
	16	Fatsia japonica	5L		Counted
	116	Geranium 'Johnson's Blue'	3L		5/m <sup>2</sup>
	136	Hebe Emerald gem	3L		5/m <sup>2</sup>
	289	Hebe 'Mrs Winder'	3L		5/m <sup>2</sup>
	569	Hebe 'Mrs Winder'	3L		5/m <sup>2</sup>
	10	Viburnum tinus 'Eve Price'	3L		5/m <sup>2</sup>

Herbaceous	Number	Pot Size	Species	Density
	113	3L	Aluga reptans	5/m <sup>2</sup>
	52	3L	Anemone hybrida 'Honoria Jobert'	5/m <sup>2</sup>
	60	3L	Bergenia cordifolia 'Purpurea'	5/m <sup>2</sup>
	53	3L	Campanula glomerata	5/m <sup>2</sup>
	169	3L	Geranium renardi	5/m <sup>2</sup>
	95	3L	Helenium 'Moerheim Beauty'	5/m <sup>2</sup>
	44	3L	Hosta 'Halcyon'	5/m <sup>2</sup>
	16	3L	Hosta 'June'	5/m <sup>2</sup>
	89	3L	Inula hookeri	5/m <sup>2</sup>
	88	3L	Rodgersia pinnata 'Superba'	5/m <sup>2</sup>
	51	3L	Rudbeckia fulgida sultivanti 'Goldsturm'	5/m <sup>2</sup>
	29	3L	Vinca Minor	5/m <sup>2</sup>

Ferns	Number	Abbreviation/Species	Density
	90	DRYFC Dypopteris filix-mas 'Cristata'	5/m <sup>2</sup>
	47	OSMRE Osmunda regalis	5/m <sup>2</sup>

Grasses	Number	Pot Size	Species	Density
	544	3L	Carex oshimensis 'Evergold'	5/m <sup>2</sup>
	131	3L	Carex pendula	5/m <sup>2</sup>
	199	3L	Stipa tenuissima	5/m <sup>2</sup>

Do not scale this drawing. Landscape Architects to be notified of discrepancies in figured dimensions from site. This drawing is copyright.

amendments and notes:  
01 Issued for Planning NMA. Drawing frame GL 13.09.23  
layout amended. Amendments to gas store layout.

Significant hazards relative to the architectural design shown on this drawing have been assessed and highlighted with reasonable skill and care using a warning triangle system.  
This drawing is to be read in conjunction with all other hazards/risks which have been identified and recorded within construction phases W&S plan.  
It is assumed that all works on this drawing will be carried out by a competent contractor working, where appropriate, to an approved method statement.  
Significant hazards are defined as :-  
• Those not likely to be obvious to a competent contractor or other designer.  
• Those of an unusual nature.  
• Those likely to be difficult to manage effectively.

**1**  
WARNING  
Description of the hazard shall refer to the risk register

drawing status: **PLANNING**

project:  
**Begbroke Science Park**

job number:  
**LP2264**

drawing title:  
**Planting Plan General Arrangement Segment 3**

drawing number:  
**LP2264-FIR-00-ZZ-DR-L-3003**

revision	scale	date
P01	1:200 @ A1	13.09.23
	drawn	auth
	AW	RS
	date	13.09.23

for information  
for construction

The Jewellery Business Centre  
89 Spencer Street  
BIRMINGHAM, B18 6DA.  
Tel: 0121 523 1033  
Fax: 0121 523 1034  
fira landscape architecture and urban design