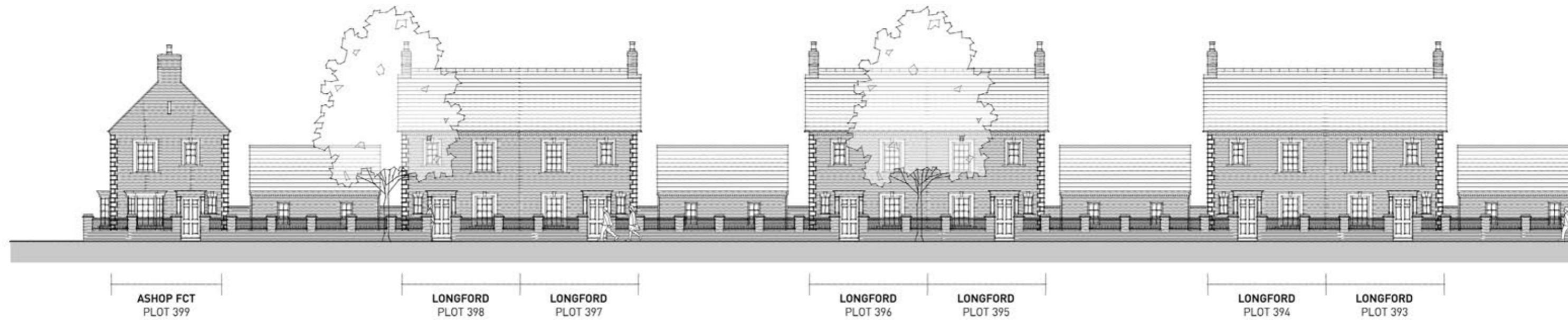


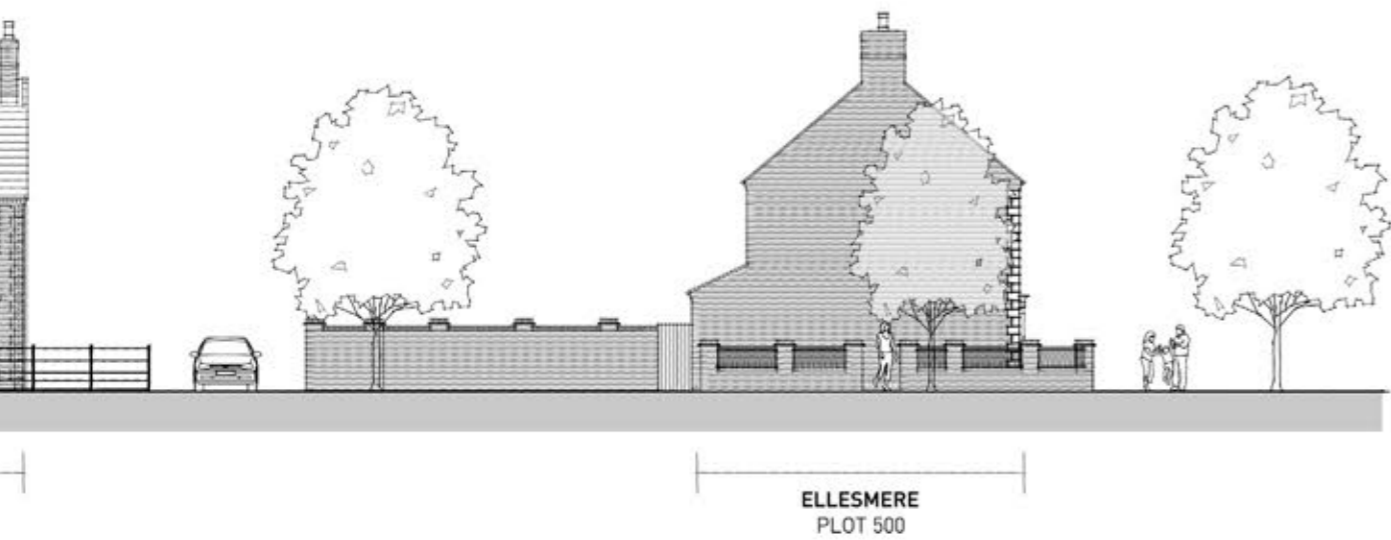
Proposed Street Scenes



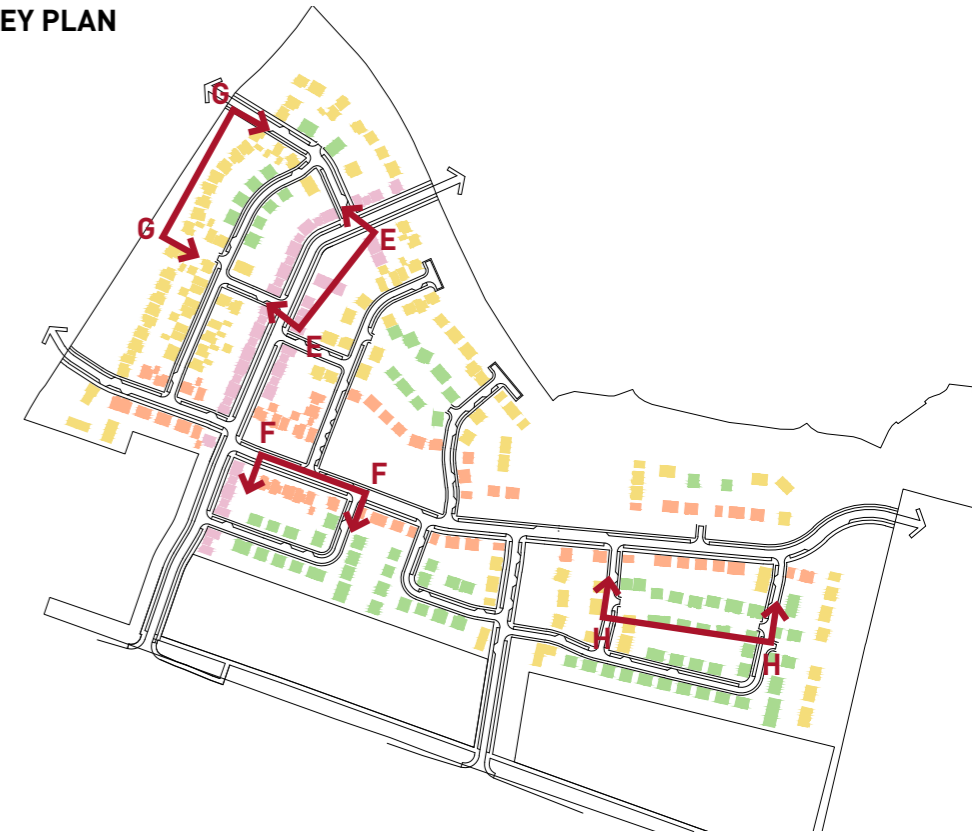
EE
GEORGIAN PRIMARY



FF
GEORGIAN SECONDARY



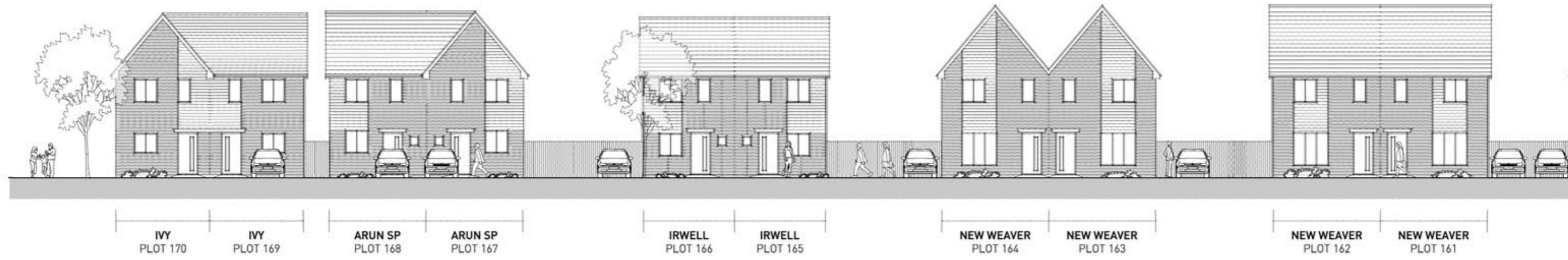
KEY PLAN



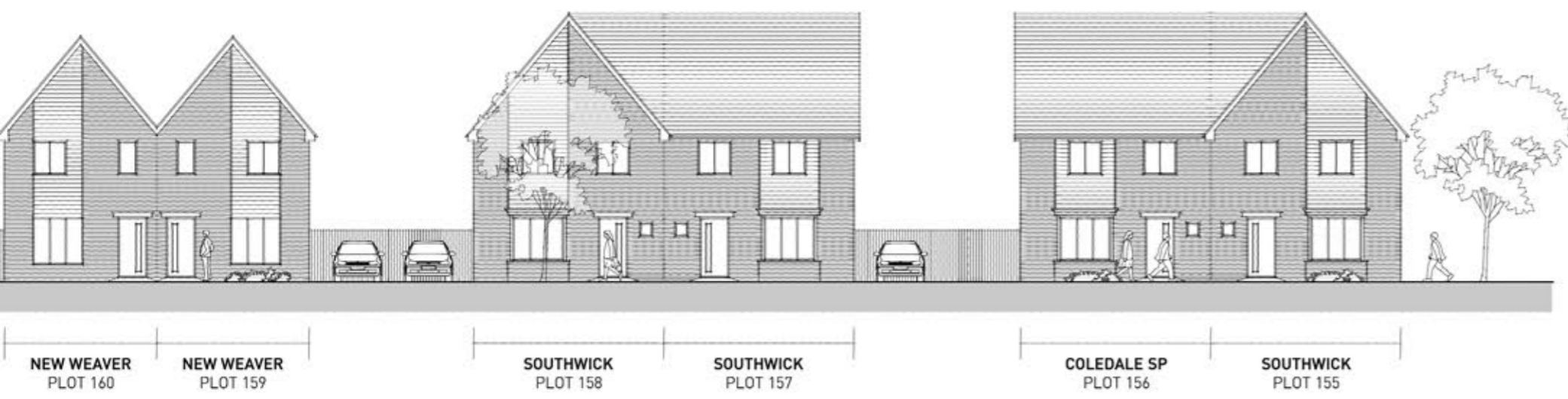
Proposed Street Scenes



GG
CORE HOUSING



HH
CONTEMPORARY



KEY PLAN



SUMMARY AND CONCLUSIONS

OVERALL APPROACH.

- 4.1 The proposed development will create housing choice and new amenity spaces for the existing and new community whilst improving public access across the site and to the wider pedestrian network.
- 4.2 The masterplan is founded on the best practice in urban design, community integration and sustainable development, with strong links to the wider area. It aims to create a development for the 21st Century, whilst reflecting the desirable elements of the local vernacular.
- 4.3 In this context, the development will respect the local character but also move the community towards a more sustainable future, through a significant increase in housing choice.
- 4.4 Development will accord with the principles of high quality design and best practice to create a townscape that is varied and sympathetic to its environment. The aim must be to achieve a development with a strong identity and distinct sense of place whilst at the same time integrating with the existing community.

4.5 The development proposals will be achieved in the following way:

- The creation of an integrated residential community With a sensitive relationship to the existing Settlement;
- The creation of pedestrian routes through the Development;
- Providing a development that is well connected, Readily understood and easily navigated;
- The creation of a strong landscape structure that responds to the local area and retains and enhances the immediate locality;
- Providing a range of dwelling sizes and types that offer an accessible and acceptable choice of lifestyles; and
- Promoting the objectives of sustainable development through layout and design.

CONCLUSION

- 4.6 The Reserved Matters submission provides a sensitively designed development which complies with the Himley Village Design Code for Development CA3: Himley Park (Residential) and delivers the key defining features for the Character Area Coding.
- 4.7 A wide range of dwelling types are provided to meet housing requirements. It includes a substantial element of affordable housing, in accordance with the requirements of the Section 106 of the outline consent, providing a varied mix of houses.
- 4.8 Overall this Design Compliance Statement provides the details of the proposed new development for CA3: Himley Park (Residential) and demonstrate how it will bring forward a residential scheme that will assimilate itself well with the overall Himley Village development. The proposal has been brought forward in conjunction with feedback from officers of the Council and will provide a good range of quality residential accommodation to meet a variety of housing needs.

Design Opportunities...



OUR OFFICES

BIRMINGHAM (City)

39 Bennetts Hill
Birmingham
B2 5SN

E Birmingham@pegasusgroup.co.uk
T 0121 308 9570

BIRMINGHAM (Sutton Coldfield)

5 The Priory
Old London Road
Canwell
Sutton Coldfield
B75 5SH

E Birmingham@pegasusgroup.co.uk
T 0121 308 9570

BRACKNELL

The Columbia Centre
Station Road
Bracknell
Berkshire
RG12 1LP

E Bracknell@pegasusgroup.co.uk
T 01344 207 777

BRISTOL

First Floor, South Wing
Equinox North
Great Park Road
Almondsbury
Bristol
BS32 4QL

E Bristol@pegasusgroup.co.uk
T 01454 625 945

CAMBRIDGE

Suite 4 Pioneer House
Vision Park
Histon
Cambridge
CB24 9NL

E Cambridge@pegasusgroup.co.uk
T 01223 202 100

CIRENCESTER

Pegasus House
Querns Business Centre
Whitworth Road
Cirencester
GL7 1RT

E Cirencester@pegasusgroup.co.uk
T 01285 641 717

DUBLIN

Ormond Building
31-36 Ormond Quay Upper
Dublin
Dublin 7

E enquiries@pegasusgroup.co.uk
T +353 (0) 1526 6714

EAST MIDLANDS

4 The Courtyard
Church Street
Lockington
Derbyshire
DE74 2SL

E EastMidlands@pegasusgroup.co.uk
T 01509 670 806

LEEDS

Pavilion Court
Green Lane
Garforth
Leeds
LS25 2AF

E Leeds@pegasusgroup.co.uk
T 0113 287 8200

LIVERPOOL

No. 4 St Paul's Square
Liverpool
L3 9SJ

E Liverpool@pegasusgroup.co.uk
T 0151 317 5220

LONDON

10 Albemarle Street
London
W1S 4HH

E London@pegasusgroup.co.uk
T 020 3897 1110

MANCHESTER

Queens House
Queen Street
Manchester
M2 5HT

E Manchester@pegasusgroup.co.uk
T 0161 393 3399

NEWCASTLE

The Corner
26 Mosley Street
Newcastle upon Tyne
NE1 1DF

E Newcastle@pegasusgroup.co.uk
T 0191 917 6700

PETERBOROUGH

Allia Future Business Centre
Peterborough United Football Club
Peterborough
PE2 8AN

E enquiries@pegasusgroup.co.uk
T 01733 666600

SOLENT

3 West Links
Tollgate
Chandlers Ford
Eastleigh
Hampshire
SO53 3TG

E solent@pegasusgroup.co.uk
T 023 8254 2777

GROUP SERVICES

5 The Priory
Old London Road
Canwell
Sutton Coldfield
B75 5SH

E enquiries@pegasusgroup.co.uk
T 0333 0160777



DESIGN



ENVIRONMENT



PLANNING



ECONOMICS



HERITAGE

PEGASUSGROUP.CO.UK

Pegasus Group is a trading name of Pegasus Planning Group Limited (07277000) registered in England and Wales
Registered Office: Pegasus House, Querns Business Centre, Whitworth Road, Cirencester, Gloucestershire, GL7 1RT

RIBA
Royal Institute of
British Architects

URBAN
DESIGN
GROUP
RECOGNISED
PRACTITIONER

