

An aerial photograph of a rural landscape. The foreground and middle ground consist of various agricultural fields in shades of green and brown, separated by hedgerows and roads. In the background, a village with numerous houses and buildings is visible. A large, semi-transparent watermark of the letters 'HMP' is overlaid on the image. A dark blue horizontal band is positioned at the bottom of the image, containing white text.

LAND AT MIDDLETON STONEY ROAD, BICESTER
HIMLEY VILLAGE

HOUSETYPE PORTFOLIO

Prepared by Pegasus Group on behalf of Countryside Properties plc
January 2021 | P20-3215

CONTENTS

Rev	Description	Date	Drawn	Checked
Draft	-	23.12.2020	FS / KB / SB	SJW
First Issue	-	13.01.2021	FS / KB / SB	SJW
A	Housetype portfolio updated to suit latest amendments to planning layout	08.02.2021	FS	SJW
B	Housetype portfolio updated to suit latest amendments to planning layout	19.02.2021	FS	SJW
C	Ashop, Ashop FCT and Blyth updated to standard housetype area	01.03.2021	FS	SJW
D	Character areas omitted and replaced with Architectural Styles (Georgian, Core and Contemporary); contemporary housetypes added; Tamar SP FCT added.	12.03.2021	FS	SJW
E	Housetype portfolio updated to suit latest amendments to planning layout	09.04.2021	FS	SJW
F	Housetype portfolio updated to suit latest amendments to planning layout	28.05.2021	FS/OS	SJW
G	Grantham, Blackthorn, Ivy house types updated.	20.07.21	SB	SJW
H	Ellesmere updated.	22.07.2021	SB	SJW

PAGE 6 01 GEORGIAN PRIMARY	PAGE 28 02 GEORGIAN SECONDARY	PAGE 64 03 CONTEMPORARY	PAGE 74 04 CORE HOUSING
---	--	--------------------------------------	--------------------------------------

THIS DOCUMENT IS DESIGNED TO BE VIEWED AS A3 DOUBLE SIDED

COPYRIGHT The contents of this document must not be copied or reproduced in whole or in part without the written consent of Pegasus Planning Group Ltd. Crown copyright. All rights reserved. Licence number 100042093.

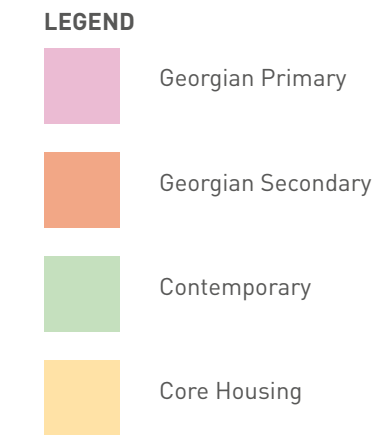
Note: For details relating to housetype handings please refer to drawing P20-3215_12 Planning Layout.

Pegasus Group
5 The Priory
Old London Road
Canwell
Sutton Coldfield
B75 5SH
www.pegasusgroup.co.uk | T 0121 308 9570 | F 0121 323 2215



Prepared by Pegasus Group on behalf of Countryside Properties plc.
Date: December 2020.
Project code: P20-3215.
Document Code: P20-2315_10
Scale: 1:100 @ A3

ARCHITECTURAL STYLES



Planning Layout with Architectural Styles | NTS
Note: This plan is not the latest revision of the Planning Layout and should be used as a guide only.

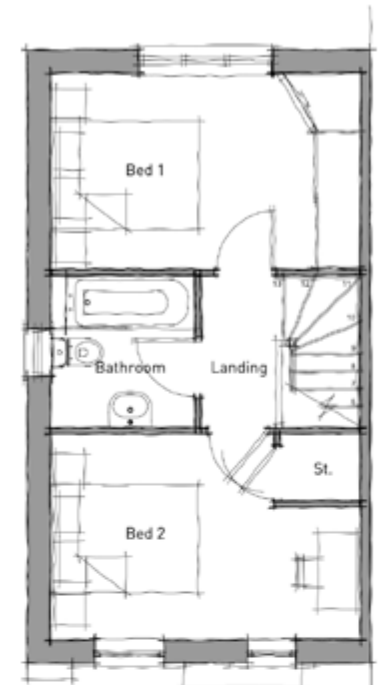
SCHEDULE

	Georgian Primary	Georgian Secondary	Contemporary	Core Housing
IRWELL - End	332, 333	22, 23, 24, 25, 185, 187, 190, 191, 241, 242, 246, 247, 258, 259, 262, 263, 472, 473	27, 28, 29, 30, 132, 135, 144, 145, 150, 151, 178, 179, 214, 215, 220, 222, 272, 274, 367	204, 206, 233, 235, 236, 238, 309, 310, 323, 324, 398, 399
IRWELL - End	-	188, 189, 192, 193, 260, 261, 474, 475	-	74, 75,
IRWELL - End (gable)	-	-	270, 271, 275, 276, 366, 368, 369, 370, 371	-
IRWELL - Mid	-	186	133, 134, 221	205, 234, 237
GRANTHAM	-	57, 131, 184	112, 136, 139	62, 252, 294, 303, 311, 327
GRANTHAM	-	21, 26, 52, 213, 227, 243, 485	-	128, 232, 255, 405
GRANTHAM - End	-	73	277, 408, 489	269, 308
GRANTHAM - End	-	223, 239, 256, 265	-	63, 71, 115, 122, 208, 291, 401, 412
NEW WEAVER - End	-	53, 54, 55, 56, 72, 129, 130, 209, 210, 211, 212, 225, 226, 244, 245, 476, 478	18, 19, 20, 317, 31, 32, 33, 34, 47, 48, 96, 97, 100, 113, 137, 140, 141, 166, 167, 174, 175, 278, 409, 488	58, 59, 60, 61, 68, 69, 117, 118, 119, 121, 124, 125, 126, 127, 216, 217, 218, 219, 228, 229, 230, 231, 248, 249, 250, 251, 253, 254, 266, 267, 268, 295, 296, 297, 298, 299, 300, 301, 302, 305, 306, 307, 328, 329, 396, 397, 406, 407
NEW WEAVER - End	-	224, 240, 257, 264	-	64, 70, 116, 123, 207, 290, 400, 413
NEW WEAVER - End (gable)	-	-	46, 49, 98, 99, 101, 114, 138, 146, 147, 148, 149, 162, 163, 164, 165, 172, 173, 176, 177, 490, 491, 492, 493, 494, 495	-
NEW WEAVER - Mid	-	-	-	120
FEATURE CT [SP]	-	-	50, 51, 142, 143	-
BLYTH	-	-	-	365, 434, 436, 445, 450, 453
ASHOP	-	344	-	-
ASHOP FCT	-	-	-	364, 433, 435, 444
BARNHAM	-	-	-	-
ALLEN	-	-	-	-
ALLEN	-	-	-	-
ALLEN [SP]	-	-	-	-
WOODBIDGE	-	-	-	-
OAKHAM	-	342, 480, 484	-	339, 415, 421, 439, 442

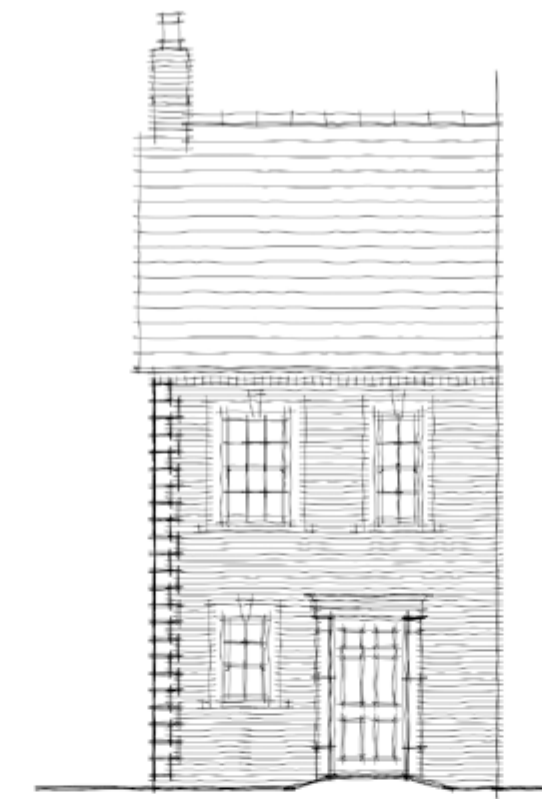
	Georgian Primary	Georgian Secondary	Contemporary	Core Housing
STRATFORD	-	-	-	360, 363
STRATFORD FCT	-	343	-	340, 424
STRATFORD FCT	-	347	-	414, 422
NEW TAMAR	-	345, 346	-	-
NEW TAMAR - End	336, 337, 351, 352, 353, 354, 380, 381, 497, 498	-	-	-
NEW TAMAR FCT	338, 357, 394	-	-	-
HAZEL [SP] - GF	-	-	-	42, 44, 80, 82, 84, 461, 463, 465, 467
HAZEL [SP] - FF	-	-	-	43, 45, 81, 83, 85, 462, 464, 466, 468
BLACKTHORN - GF	-	194, 196	-	198, 200, 202
BLACKTHORN - FF	-	195, 197	-	199, 201, 203
IVY [SP] - End	-	-	09, 10	-
IVY - End	-	-	11, 37, 182	67, 65, 78, 79, 376, 457, 460
IVY - End (gable)	-	-	36, 86, 87, 158, 161, 183	-
IVY - Mid	-	-	12	66, 375, 458, 459
ARUN [SP] - End	312, 313, 320, 321, 322	-	05, 06, 90, 91, 93, 109, 111, 181, 283, 289, 402, 426	152, 154, 155, 157, 386, 388
ARUN [SP] - End	314	-	-	-
ARUN [SP] - End (gable)	-	-	07, 08, 92, 180, 281, 288, 425, 427, 428, 429, 430	-
ARUN [SP] - Mid	319	-	110, 282, 403	153, 156, 387
ARUN [SP] - Mid	315	-	-	-
CHESTNUT [SP] - End	318	-	404	-
CHESTNUT [SP] - End	316	-	-	-
CHESTNUT - End	-	-	13	374
CEDAR - End	-	-	16, 17, 102, 103, 431	-
CEDAR - End (gable)	-	-	88, 89, 94, 95, 104, 105, 432	-
FEATURE CT [SP]	-	-	-	279, 280

	Georgian Primary	Georgian Secondary	Contemporary	Core Housing
COLEDALE [SP] - End	-	469, 471	169, 372	325, 326, 389, 390
COLEDALE [SP] - End (gable)	-	-	38, 39, 41, 284, 285, 286, 287, 373	-
COLEDALE [SP] - Mid	-	470	-	-
SOUTHWICK [SP]	-	-	76, 77	-
SOUTHWICK - End	-	-	03, 04, 170, 410, 411	-
SOUTHWICK - End (gable)	-	-	168, 170	-
ORCHARD [SP1] - End	-	-	14, 15, 106, 108	-
ORCHARD [SP1] - Mid	-	-	107	-
ORCHARD [SP2]	-	-	35	-
DEE - End	-	-	-	-
DEE	-	-	-	-
CONISTON	-	-	-	-
LYMINGTON	-	-	-	-
ELLESMERE - End	-	-	-	-
LONGFORD - End	-	-	-	-

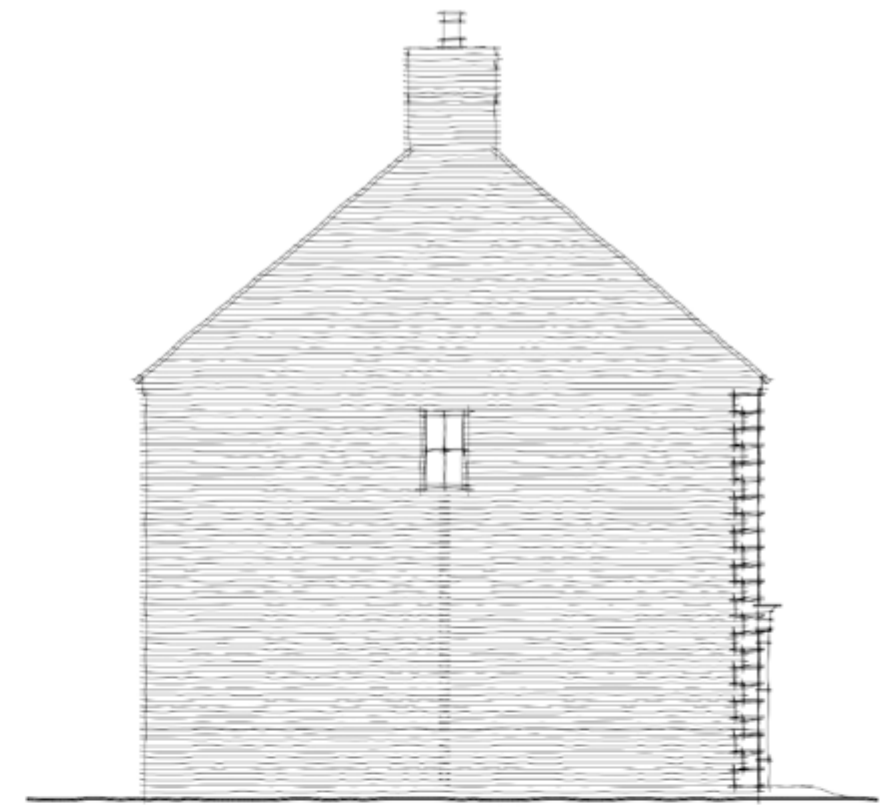
THIS PAGE INTENTIONALLY LEFT BLANK



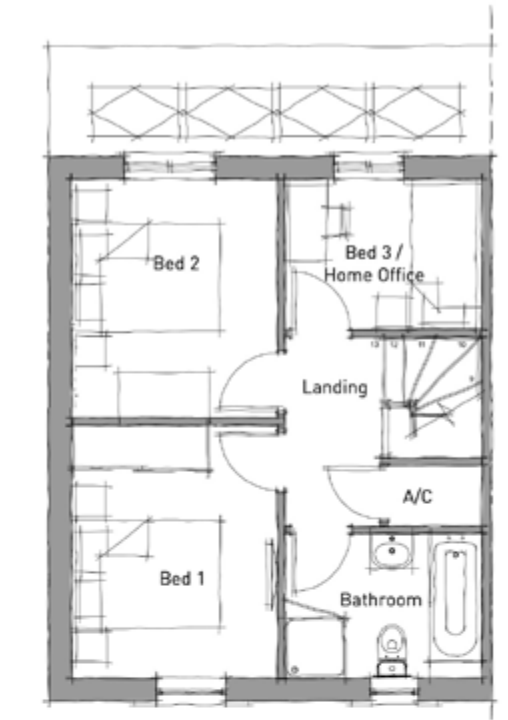
First Floor Plan



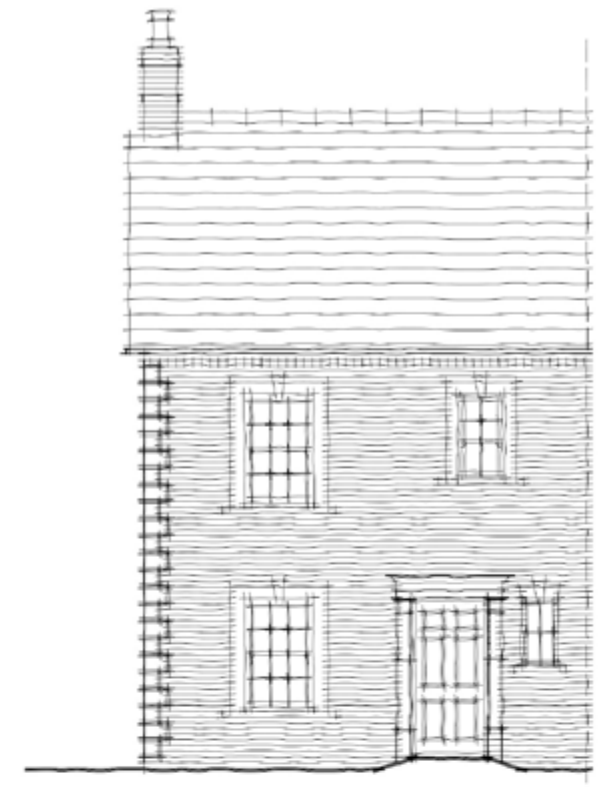
Front Elevation



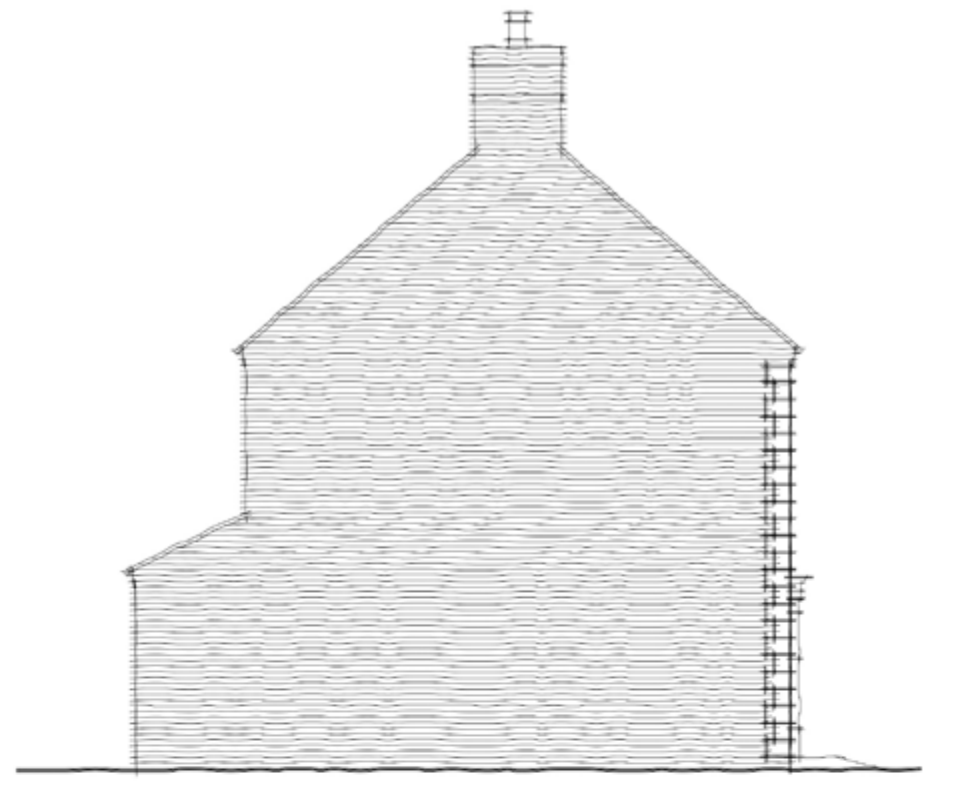
Side Elevation



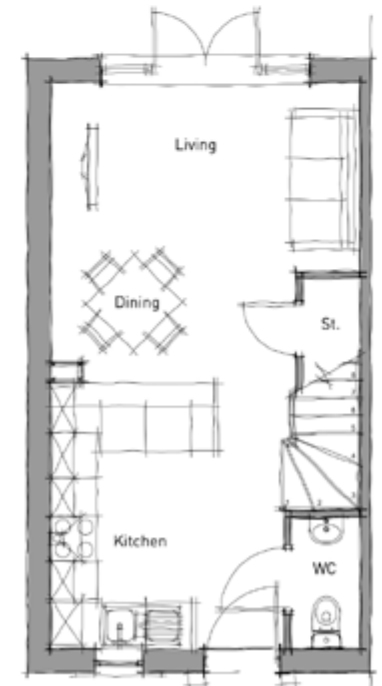
First Floor Plan



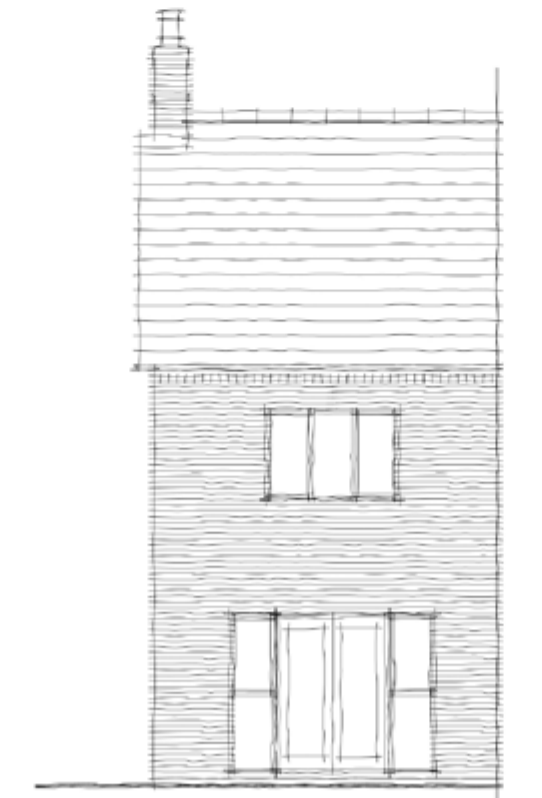
Front Elevation



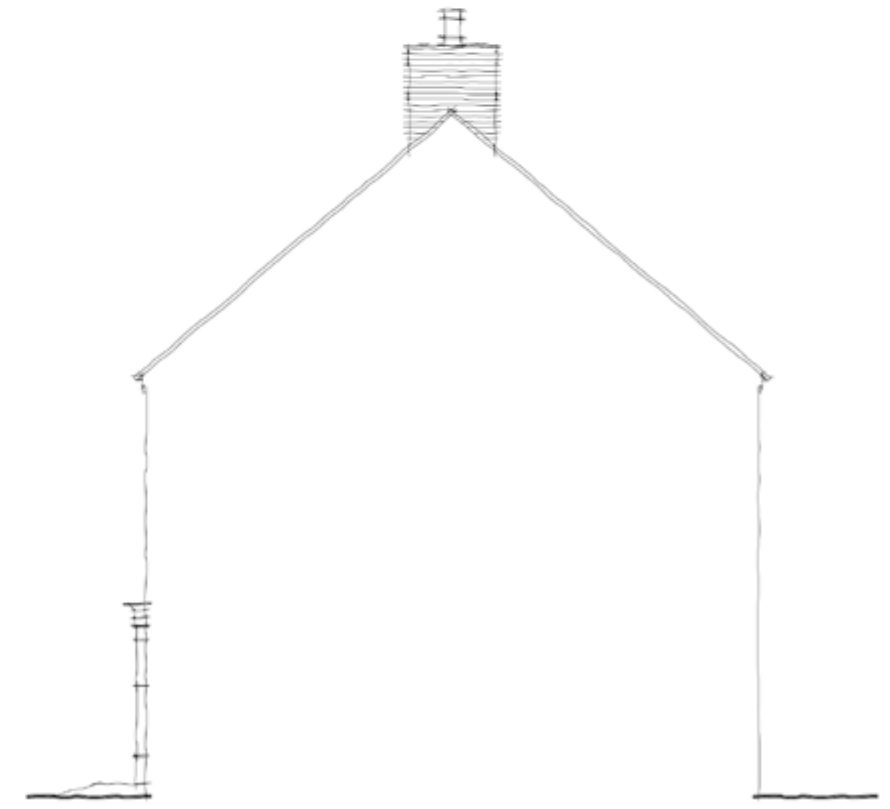
Side Elevation



Ground Floor Plan



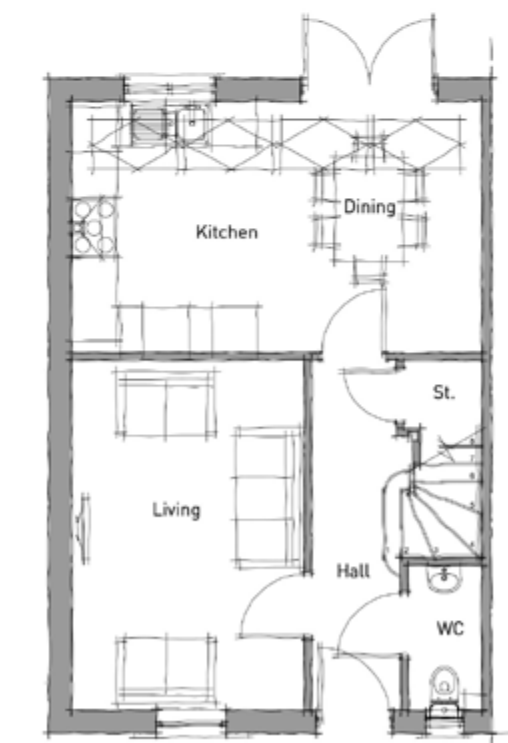
Rear Elevation



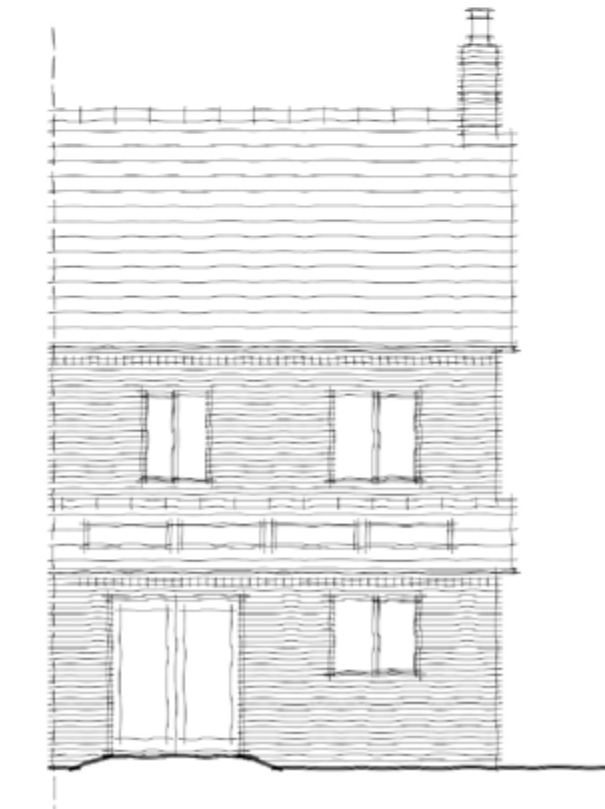
Side Section

Irwell 6.0 - End | 662sqft / 62sqm

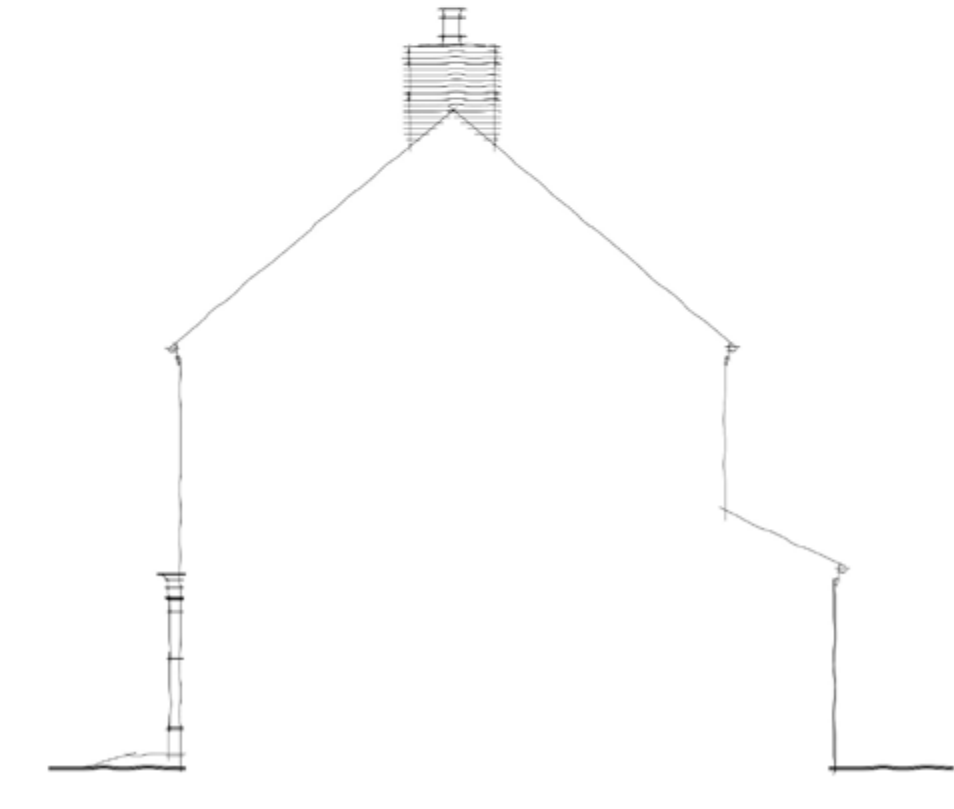
Drawing ref: P20-3215_10 - 10



Ground Floor Plan



Rear Elevation



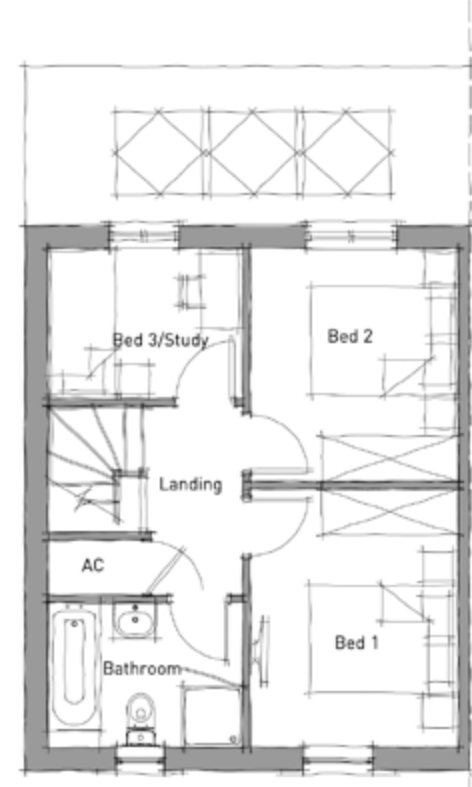
Side Section

Ellesmere 6.0 - End | 855sqft / 79sqm

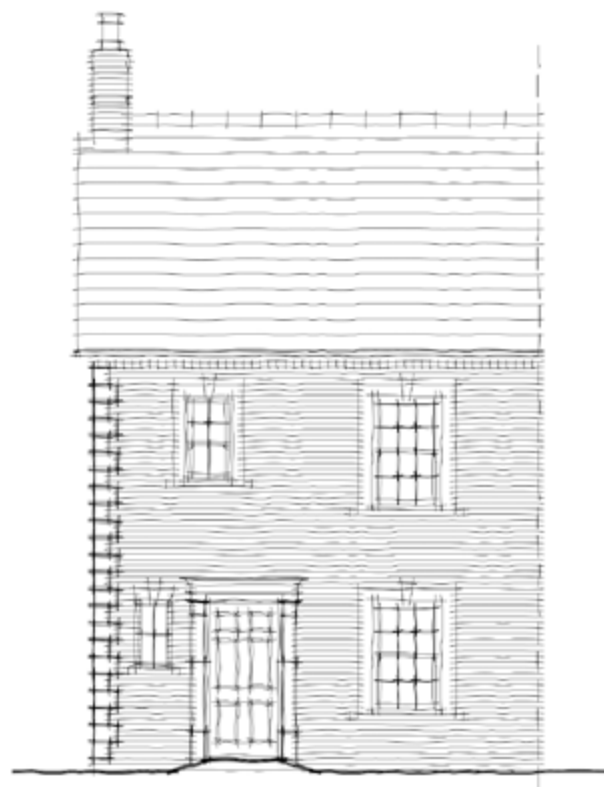
Drawing ref: P20-3215_10 - 11

Prepared and presented by Pegasus Group on behalf of Countryside Properties Ltd. Drawing to be read in conjunction with accompanying planning drawings.

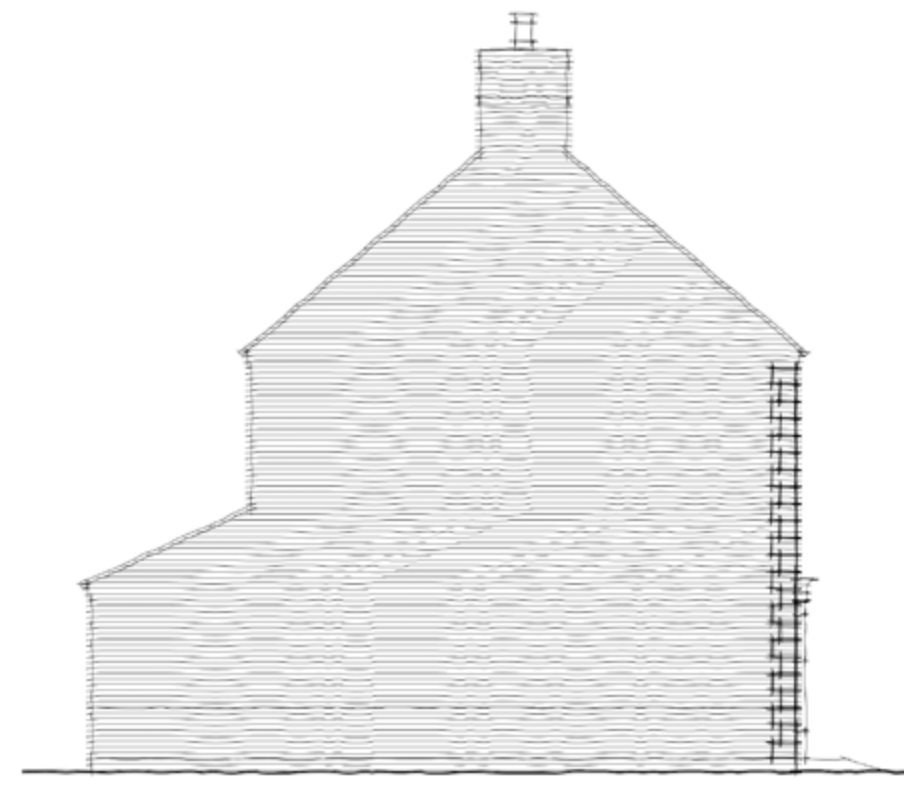
Prepared and presented by Pegasus Group on behalf of Countryside Properties Ltd. Drawing to be read in conjunction with accompanying planning drawings.



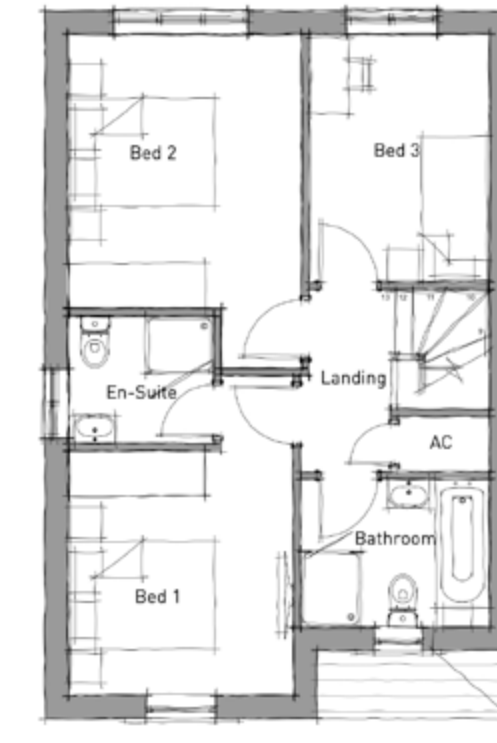
First Floor Plan



Front Elevation



Side Elevation



First Floor Plan



Front Elevation



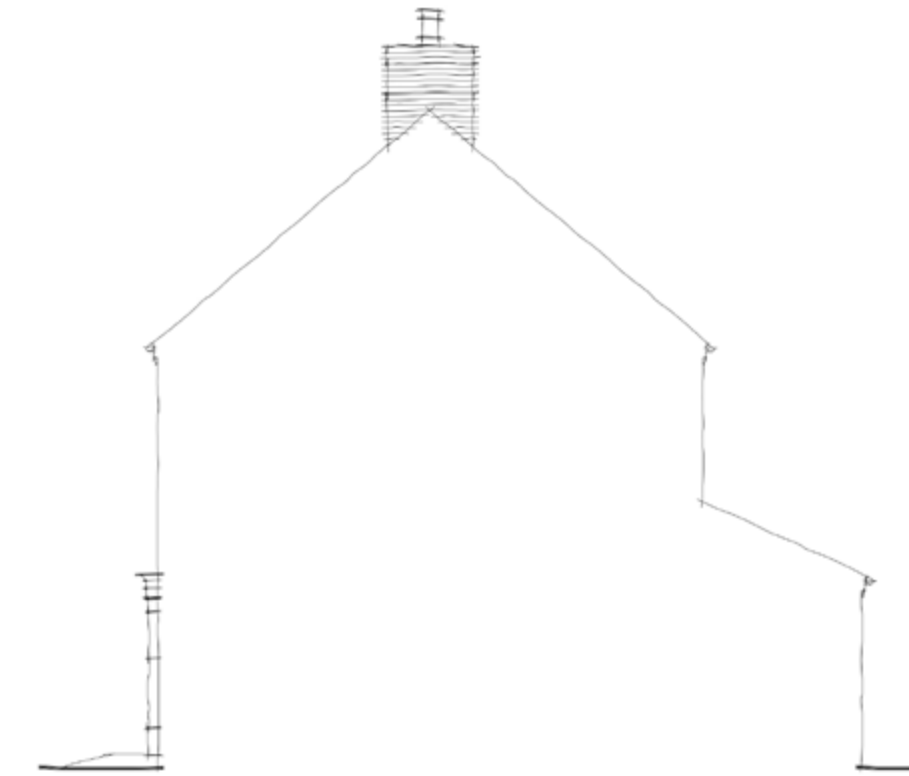
Side Elevation



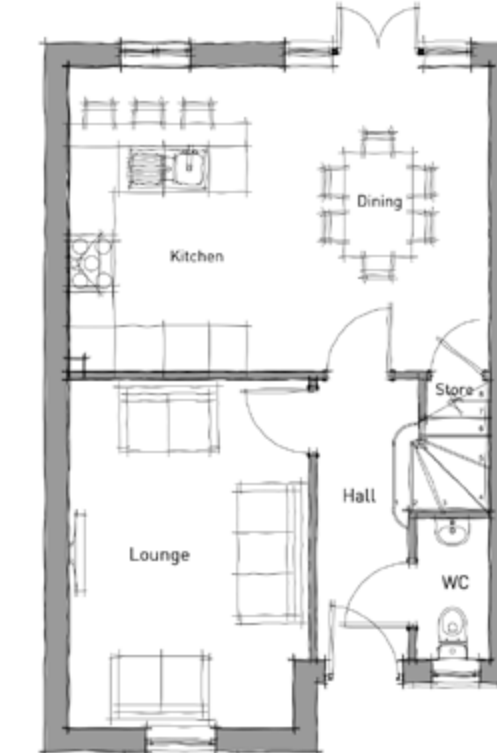
Ground Floor Plan



Rear Elevation



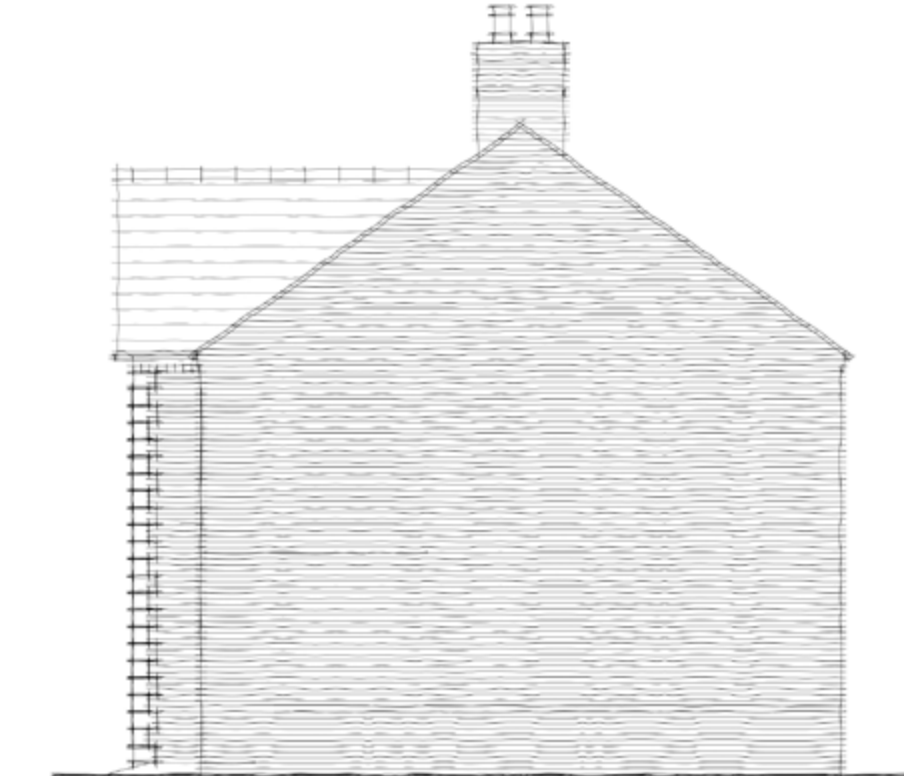
Side Section



Ground Floor Plan



Rear Elevation



Side Elevation

Longford 6.0 - End | 893sqft / 83sqm

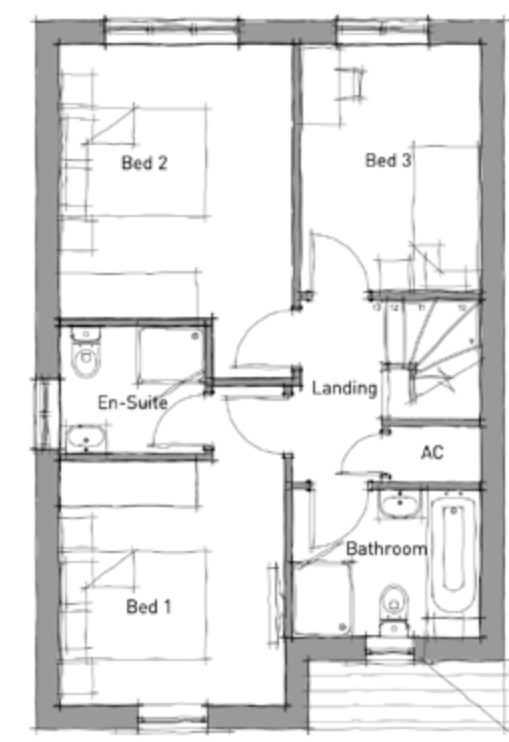
Drawing ref: P20-3215_10 - 12

Blyth 6.0 | 1002sqft / 93sqm

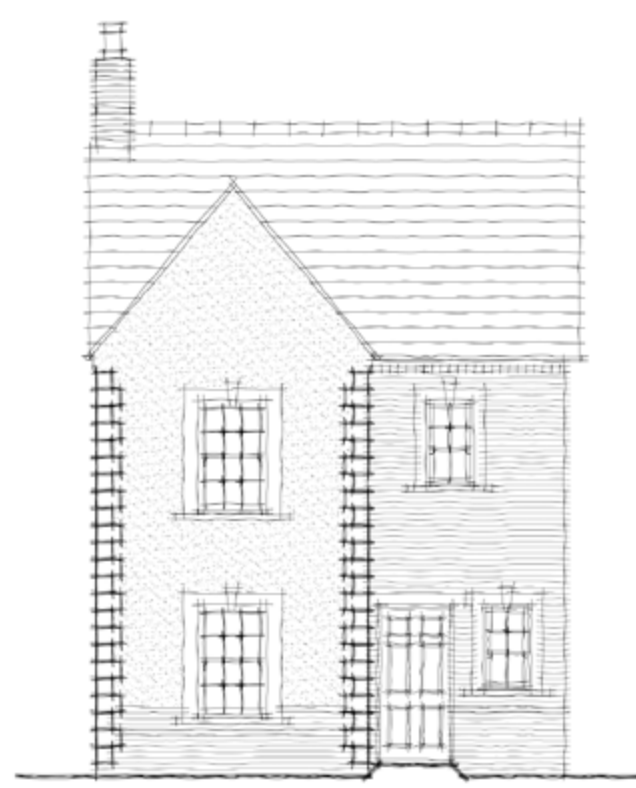
Drawing ref: P20-3215_10 - 13

Prepared and presented by Pegasus Group on behalf of Countryside Properties Ltd. Drawing to be read in conjunction with accompanying planning drawings.

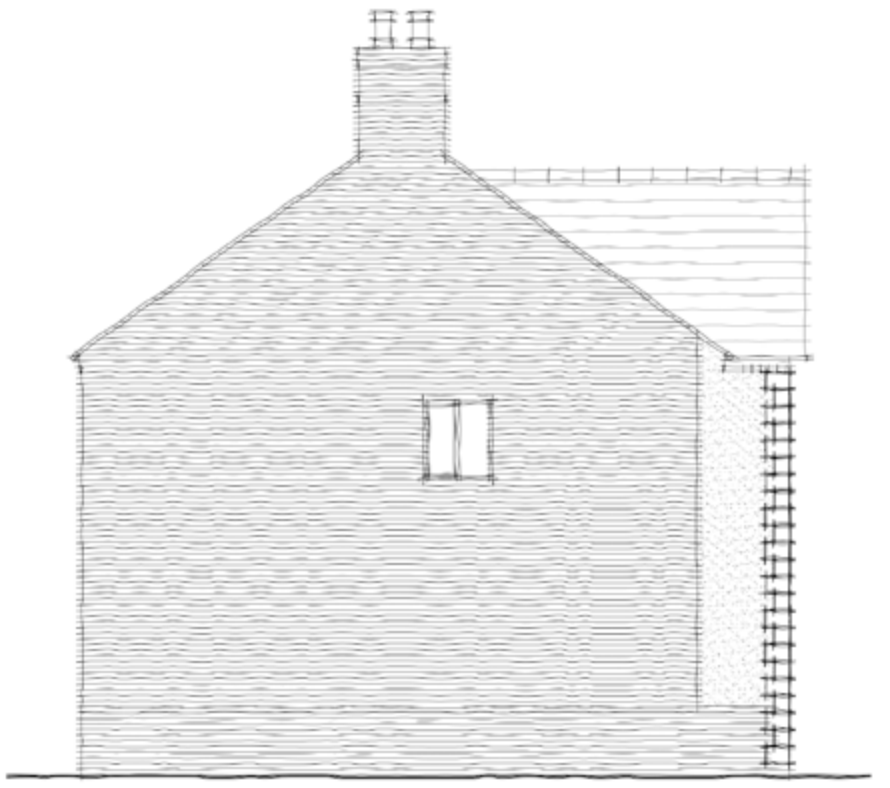
Prepared and presented by Pegasus Group on behalf of Countryside Properties Ltd. Drawing to be read in conjunction with accompanying planning drawings.



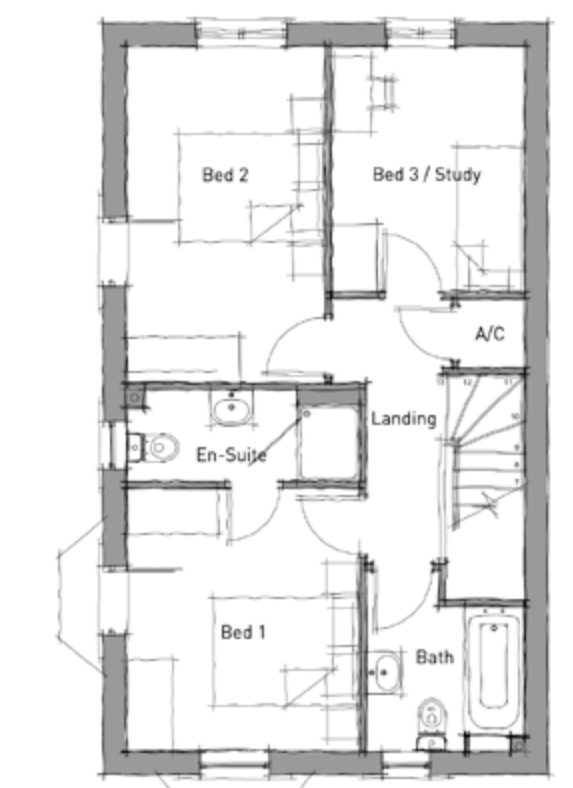
First Floor Plan



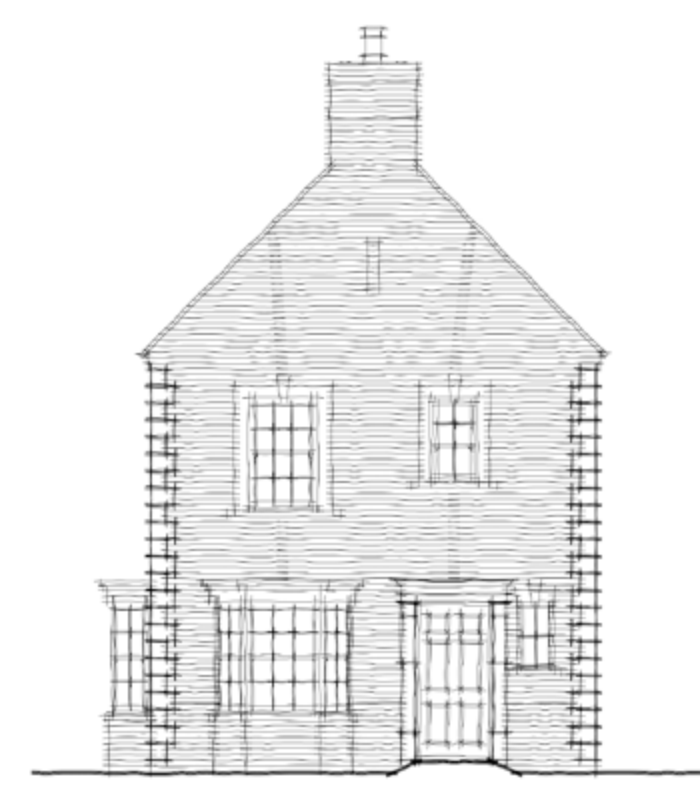
Front Elevation



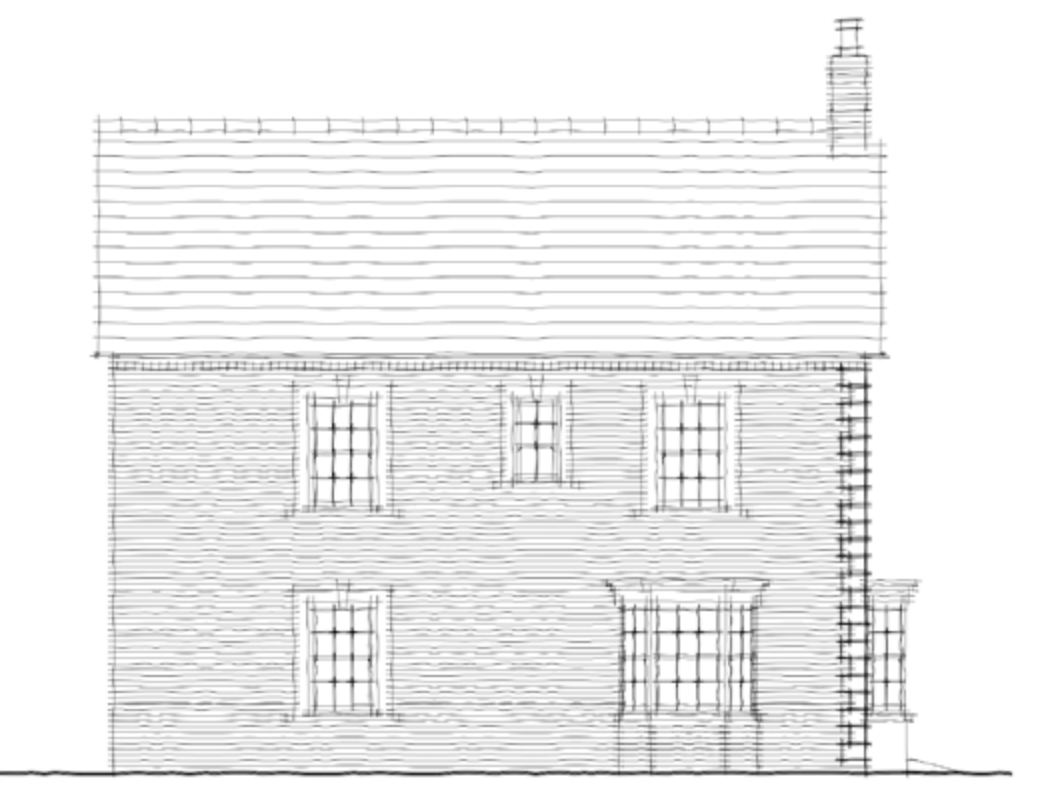
Side Elevation



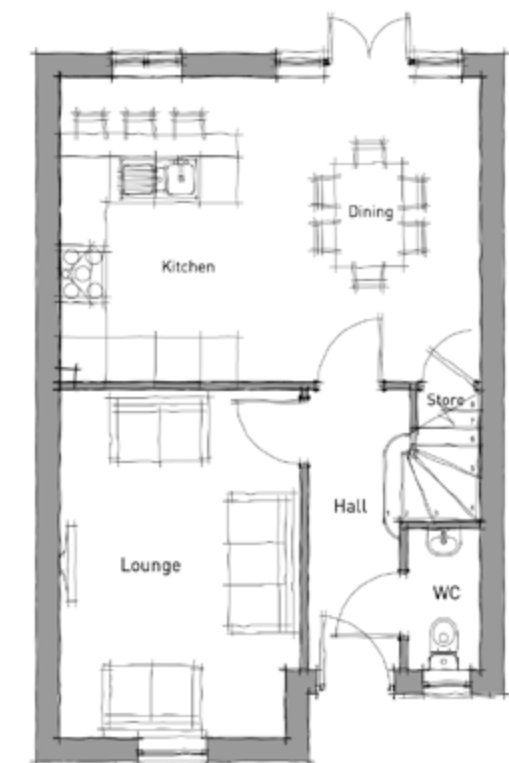
First Floor Plan



Front Elevation



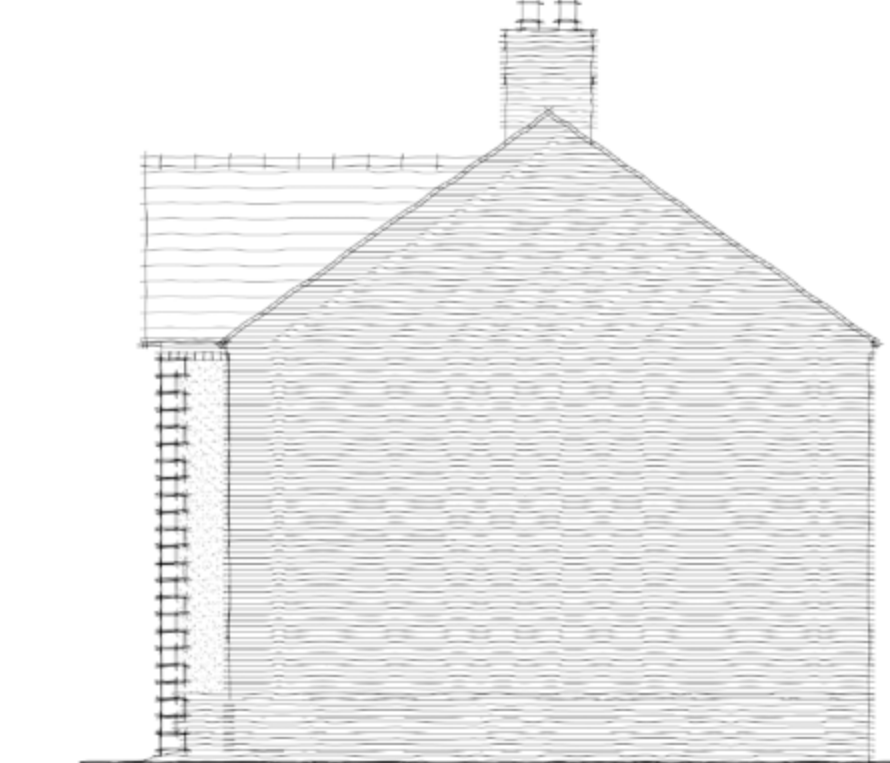
Side Elevation



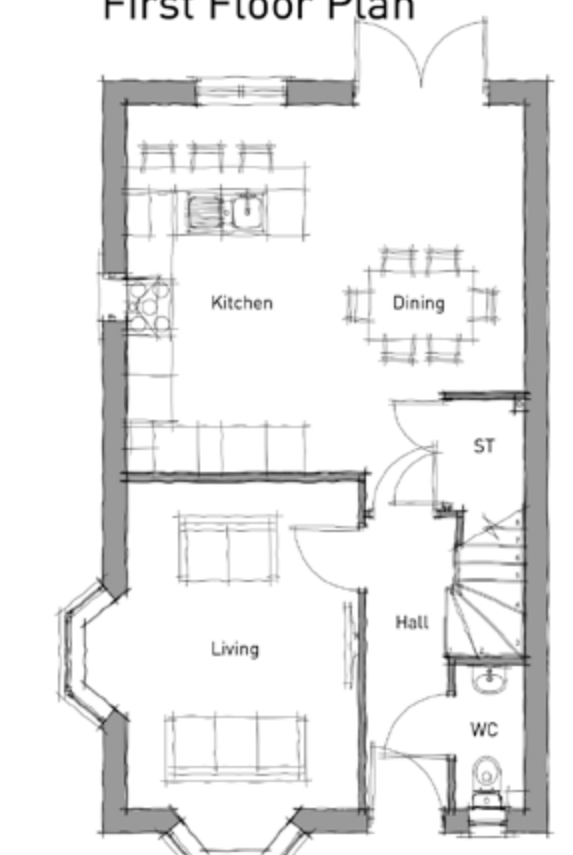
Ground Floor Plan



Rear Elevation



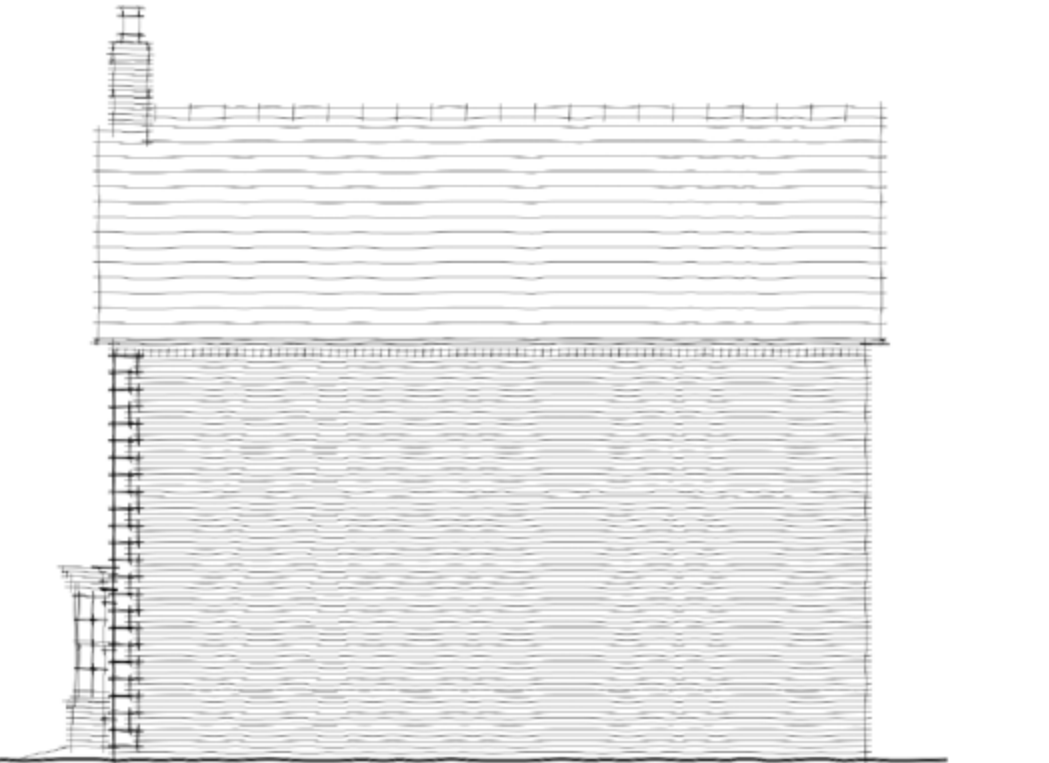
Side Elevation



Ground Floor Plan



Rear Elevation



Side Elevation

Blyth 6.1 | 1002sqft / 93sqm

Drawing ref: P20-3215_10 - 14

Ashop (FCT) 6.3 | 1075sqft / 100sqm

Drawing ref: P20-3215_10 - 15

Prepared and presented by Pegasus Group on behalf of Countryside Properties Ltd. Drawing to be read in conjunction with accompanying planning drawings.

Prepared and presented by Pegasus Group on behalf of Countryside Properties Ltd. Drawing to be read in conjunction with accompanying planning drawings.



First Floor Plan



Front Elevation



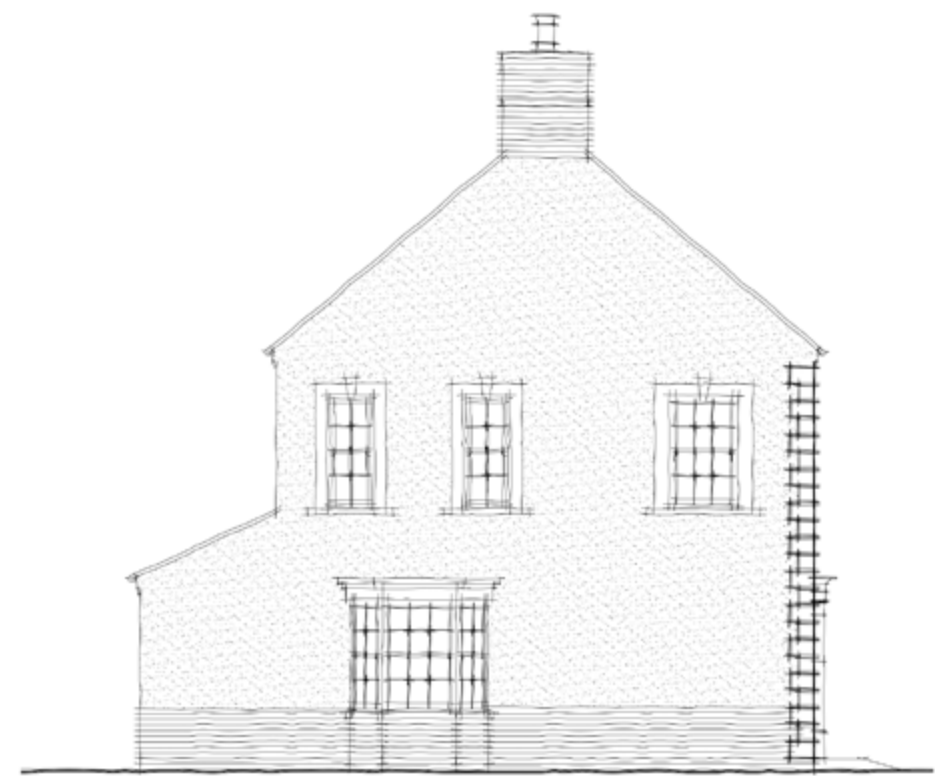
Side Elevation



First Floor Plan



Front Elevation



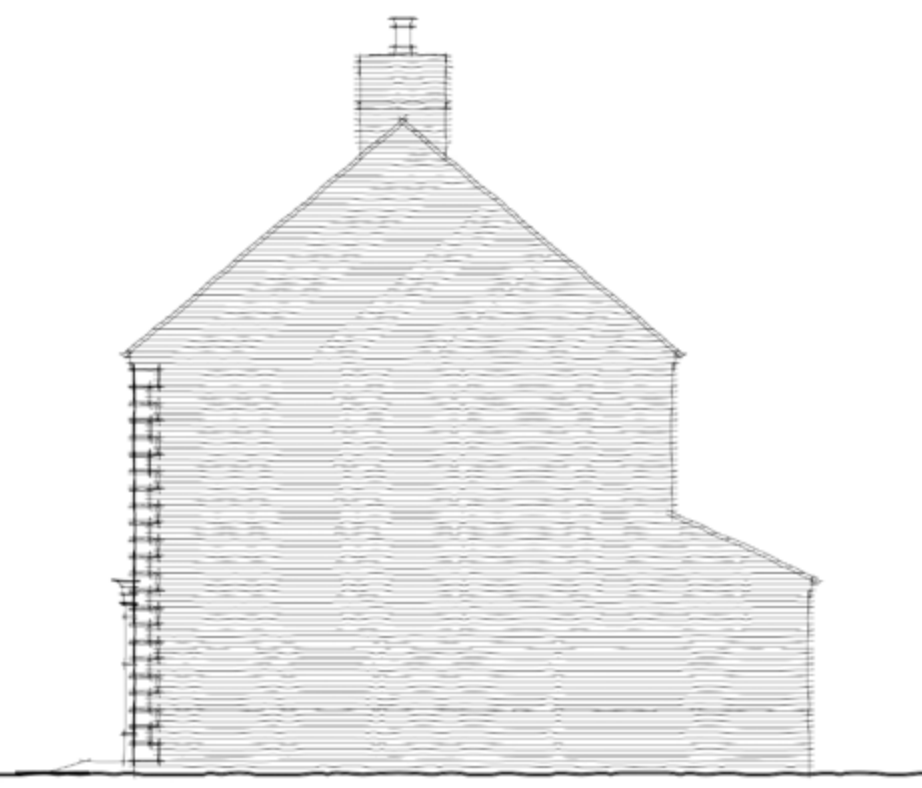
Side Elevation



Ground Floor Plan



Rear Elevation



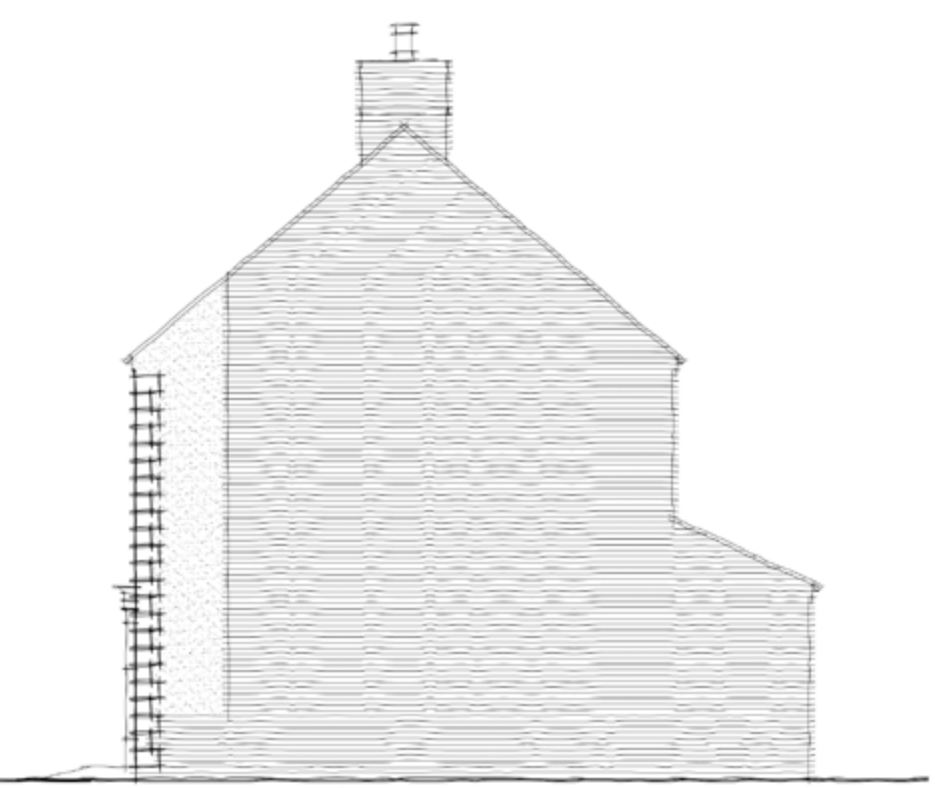
Side Elevation



Ground Floor Plan



Rear Elevation



Side Elevation

Coniston 6.0 | 1183sqft / 110sqm

Drawing ref: P20-3215_10 - 16

Coniston 6.1 | 1183sqft / 110sqm

Drawing ref: P20-3215_10 - 17

Prepared and presented by Pegasus Group on behalf of Countryside Properties Ltd. Drawing to be read in conjunction with accompanying planning drawings.

Prepared and presented by Pegasus Group on behalf of Countryside Properties Ltd. Drawing to be read in conjunction with accompanying planning drawings.



Front Elevation Front Elevation Rear Elevation Side Elevation



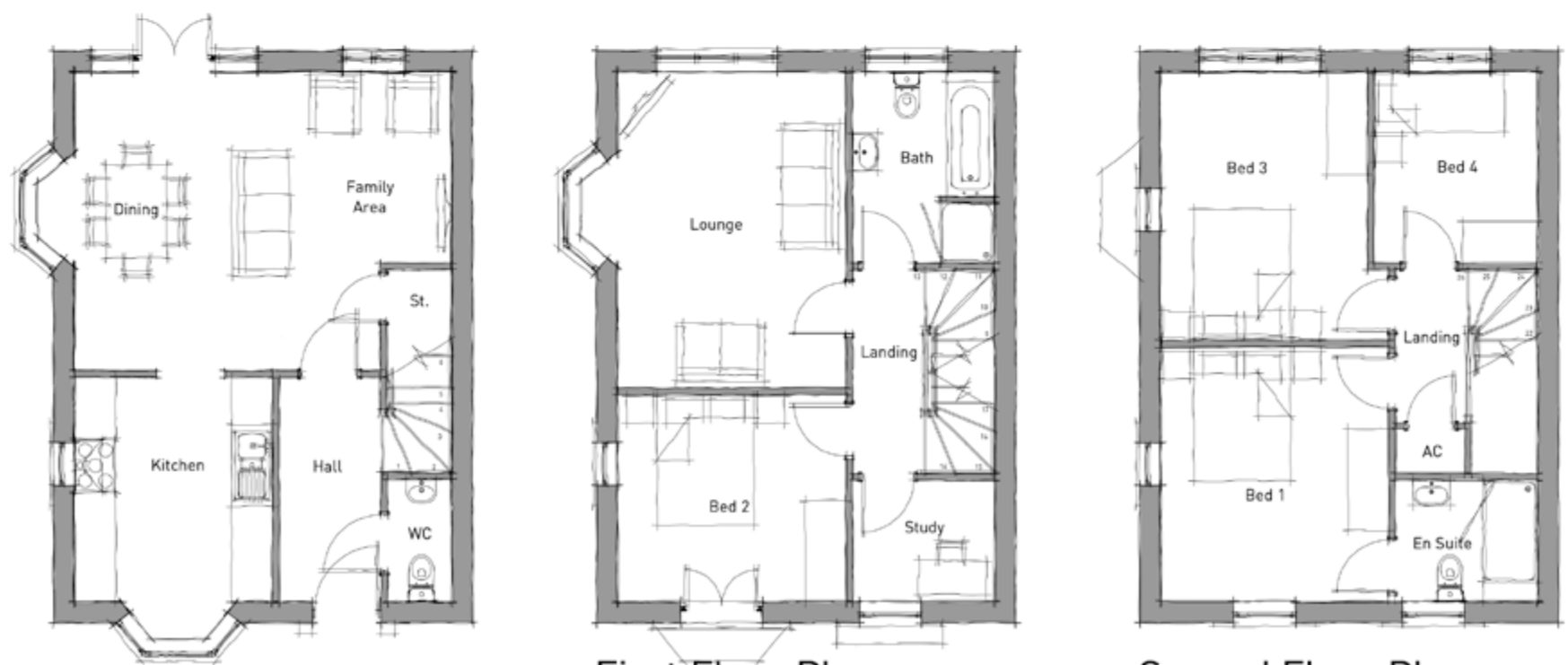
Ground Floor Plan First Floor Plan Second Floor Plan

New Tamar (End) 6.0 | 1412sqft / 131sqm

Drawing ref: P20-3215_10 - 18



Front Elevation Front Elevation Rear Elevation Side Elevation



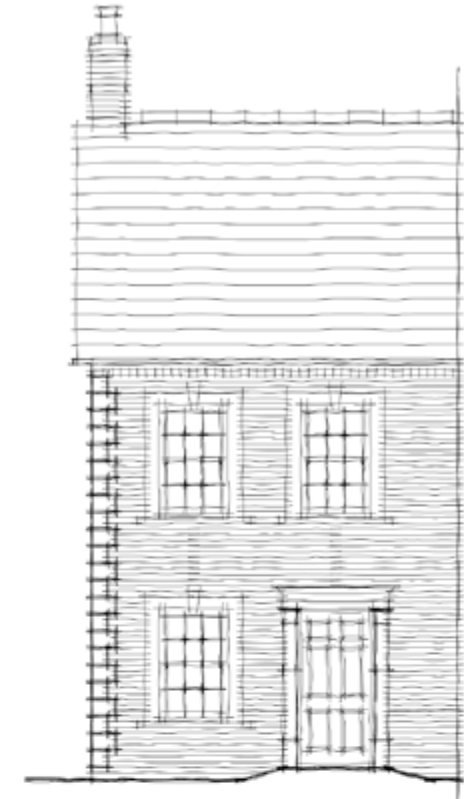
Ground Floor Plan First Floor Plan Second Floor Plan

New Tamar (FCT) 6.3 | 1412sqft / 131sqm

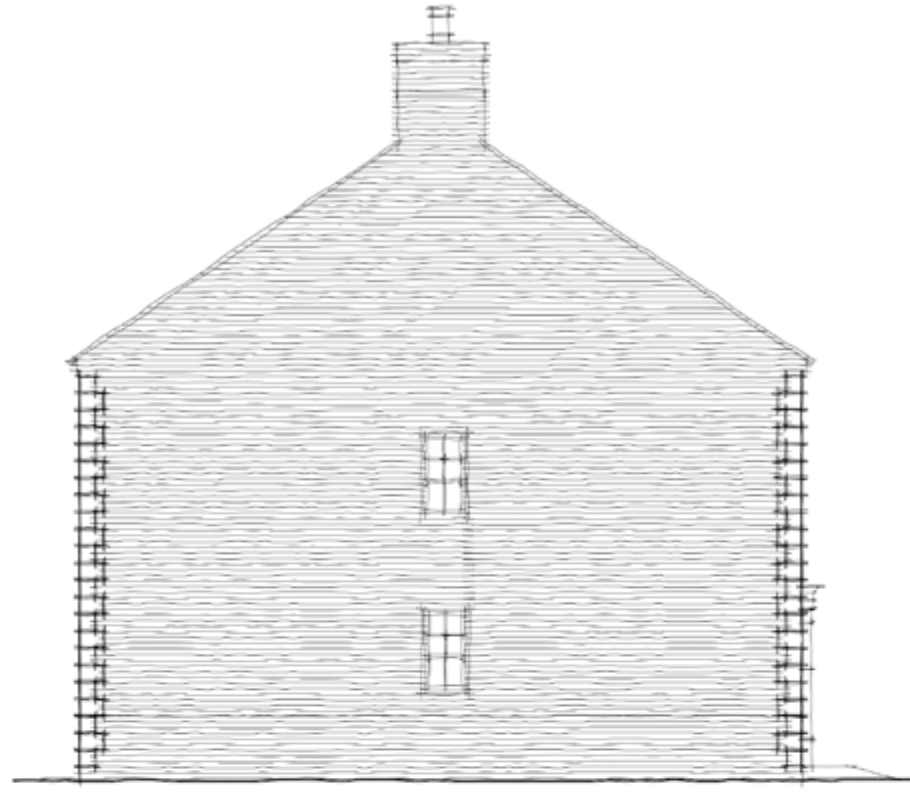
Drawing ref: P20-3215_10 - 19



First Floor Plan



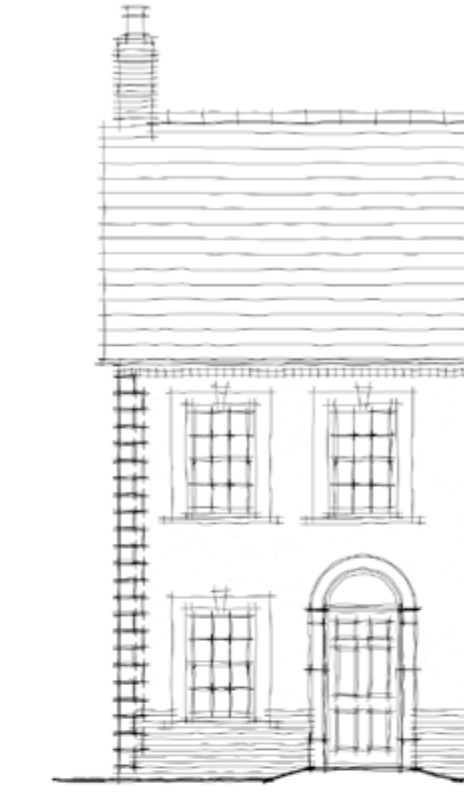
Front Elevation



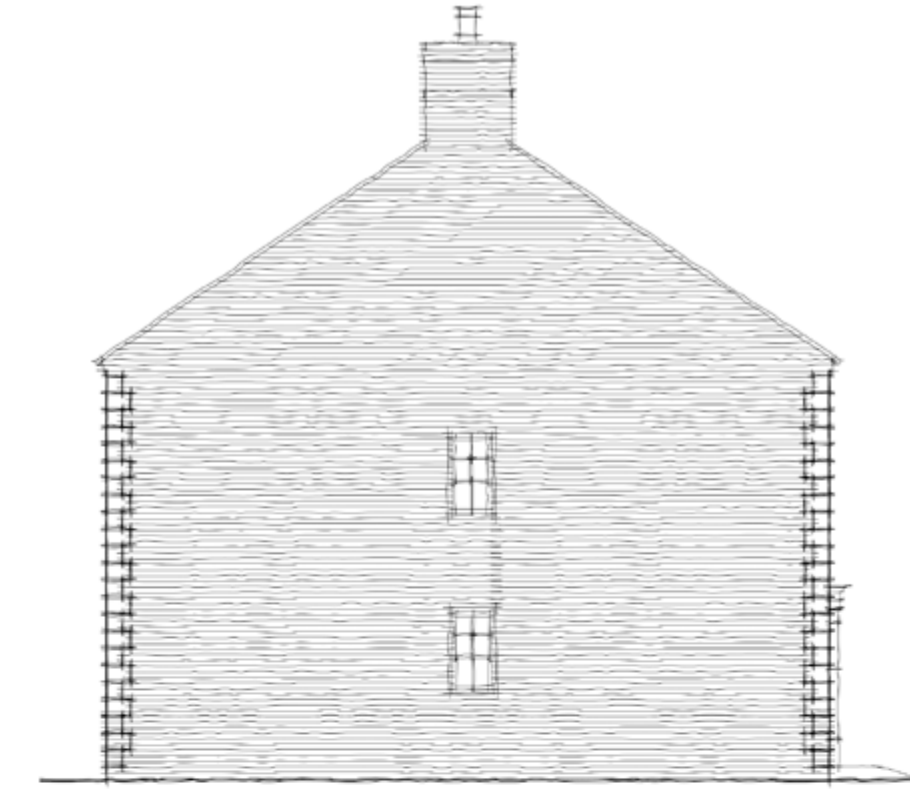
Side Elevation



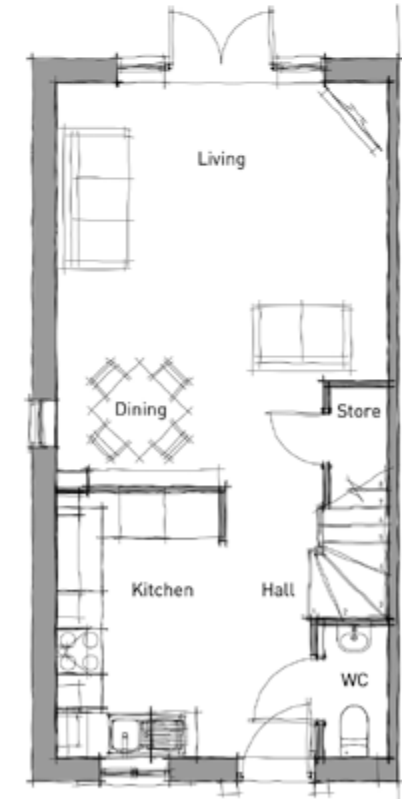
First Floor Plan



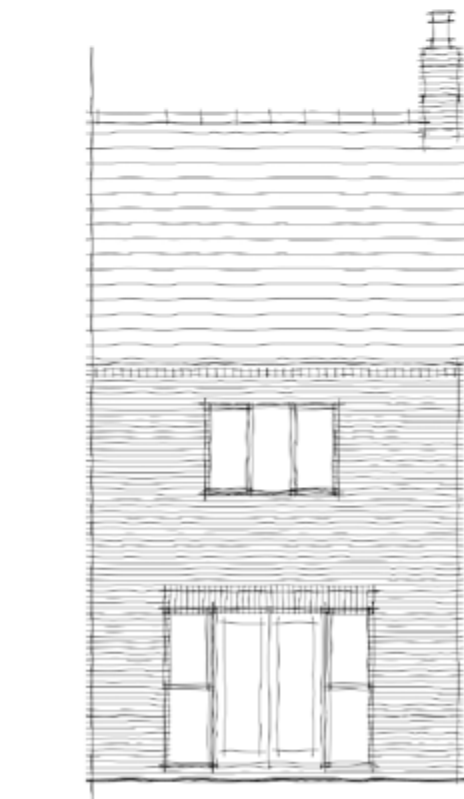
Front Elevation



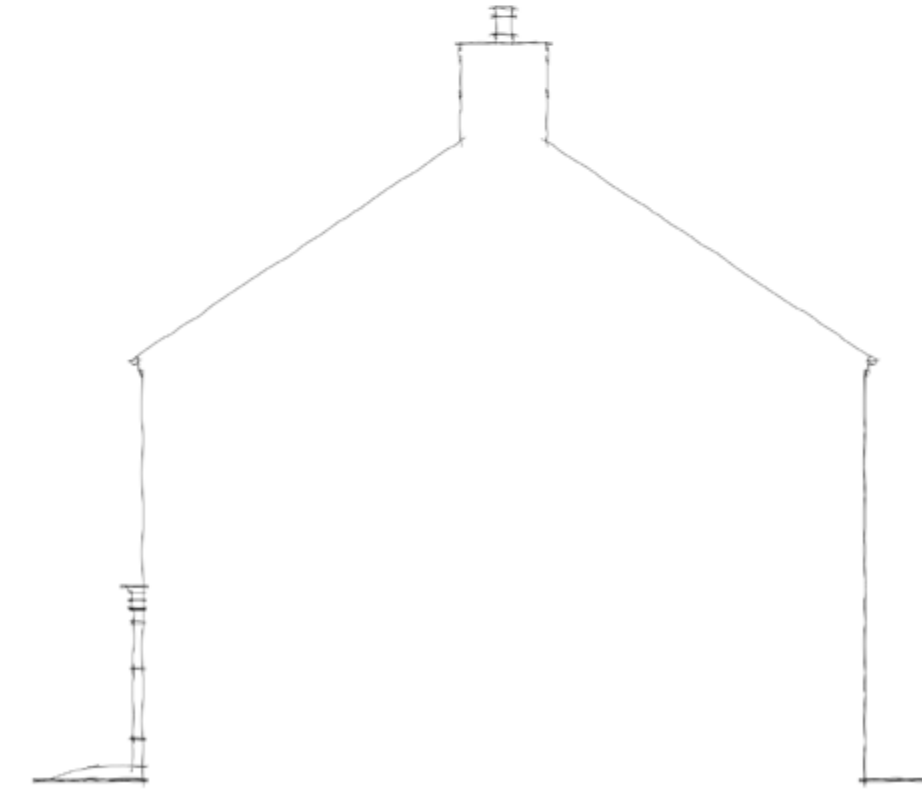
Side Elevation



Ground Floor Plan



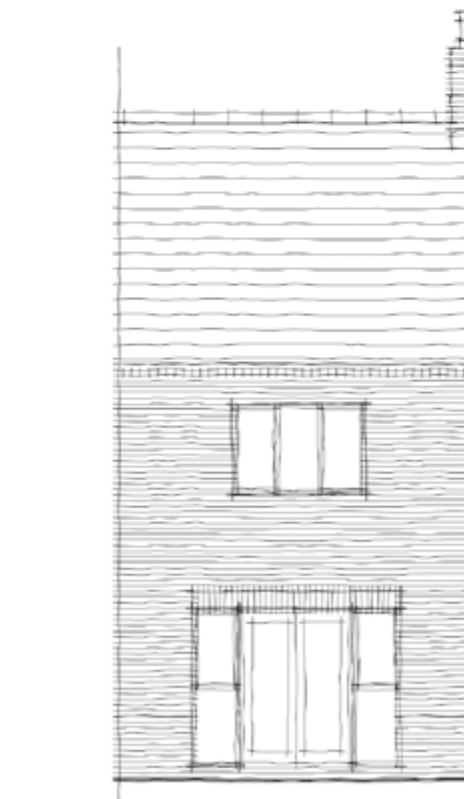
Rear Elevation



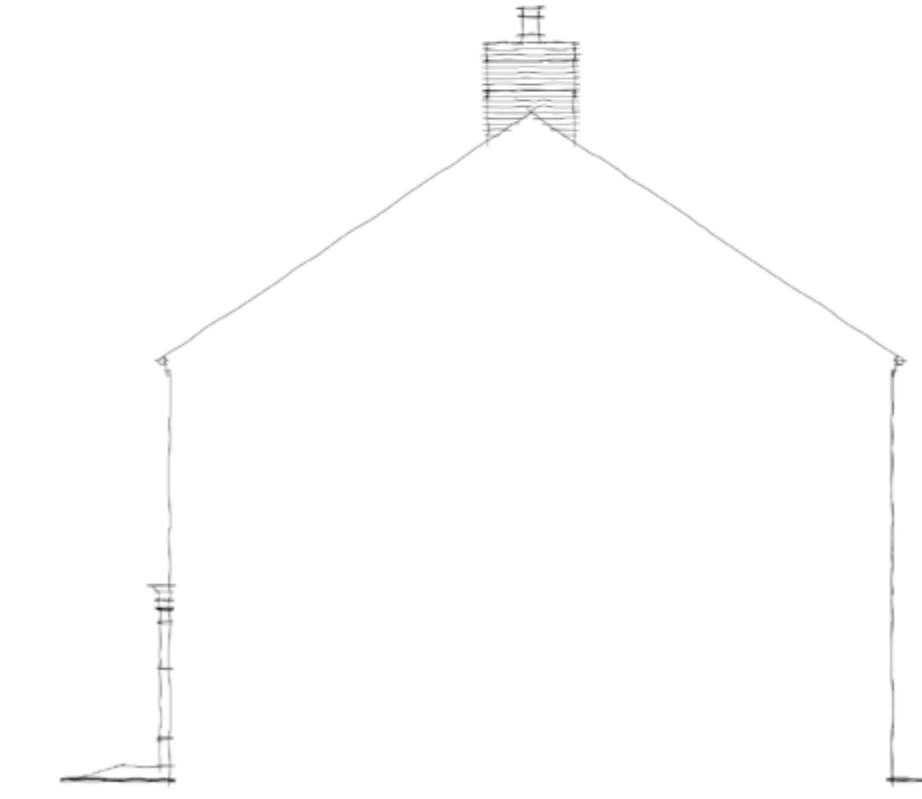
Side Section



Ground Floor Plan



Rear Elevation



Side Section

Arun SP (End) 6.0 * | 850sqft / 79sqm

Drawing ref: P20-3215_10 - 20

Arun SP (End) 6.1 * | 850sqft / 79sqm

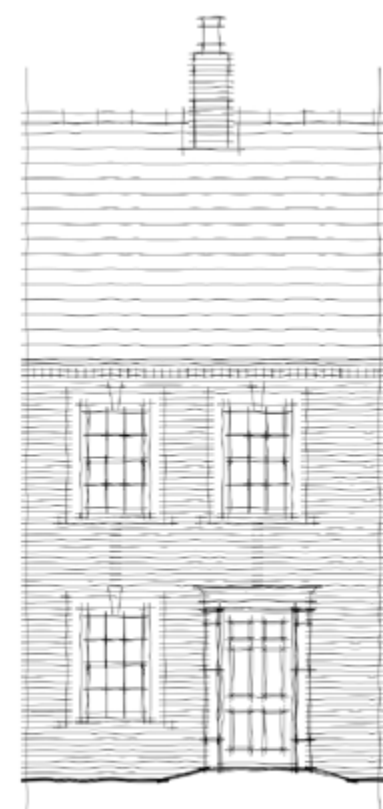
Drawing ref: P20-3215_10 - 21

Prepared and presented by Pegasus Group on behalf of Countryside Properties Ltd. Drawing to be read in conjunction with accompanying planning drawings.

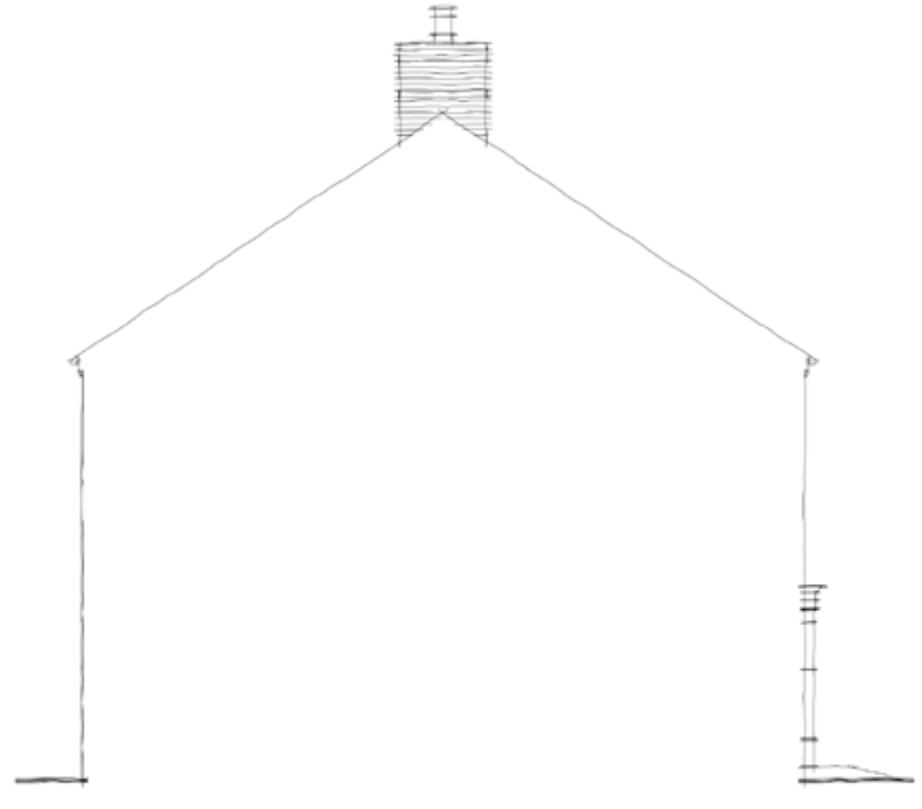
Prepared and presented by Pegasus Group on behalf of Countryside Properties Ltd. Drawing to be read in conjunction with accompanying planning drawings.



First Floor Plan



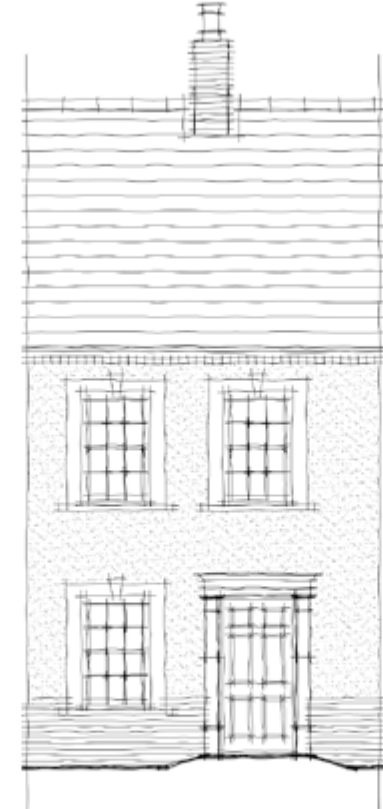
Front Elevation



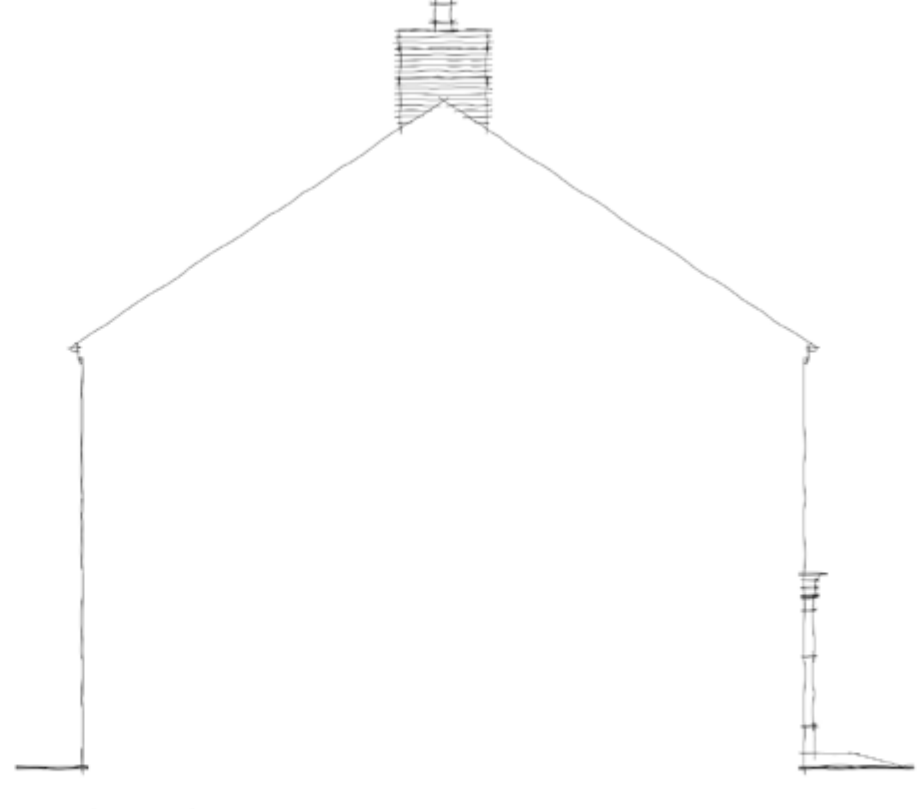
Side Section



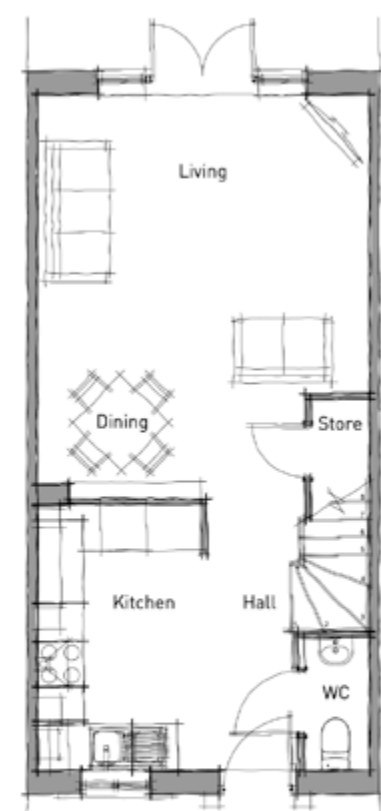
First Floor Plan



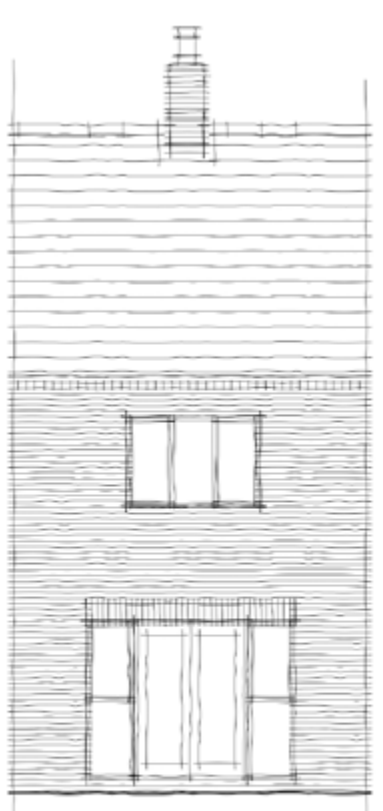
Front Elevation



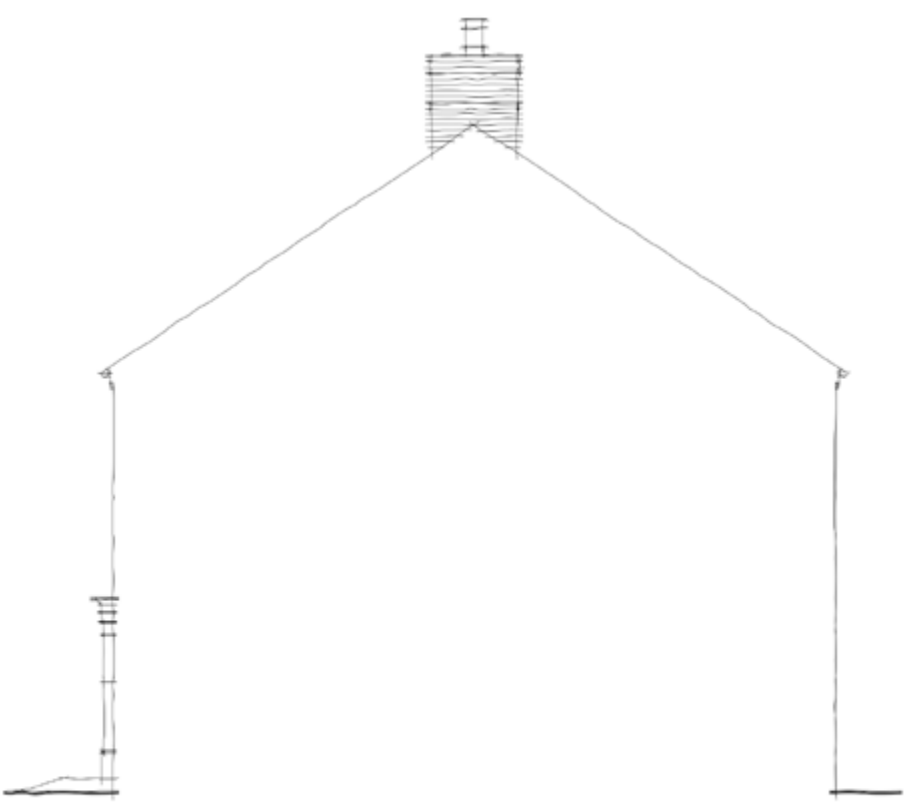
Side Section



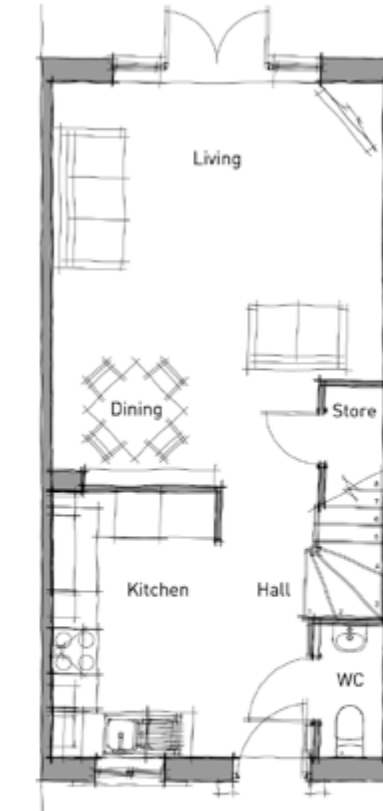
Ground Floor Plan



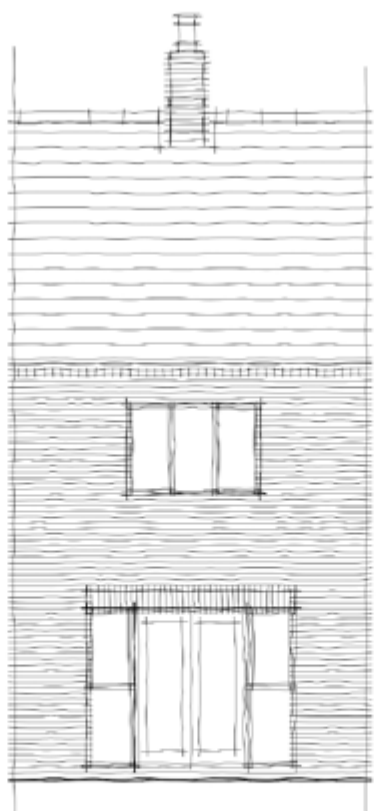
Rear Elevation



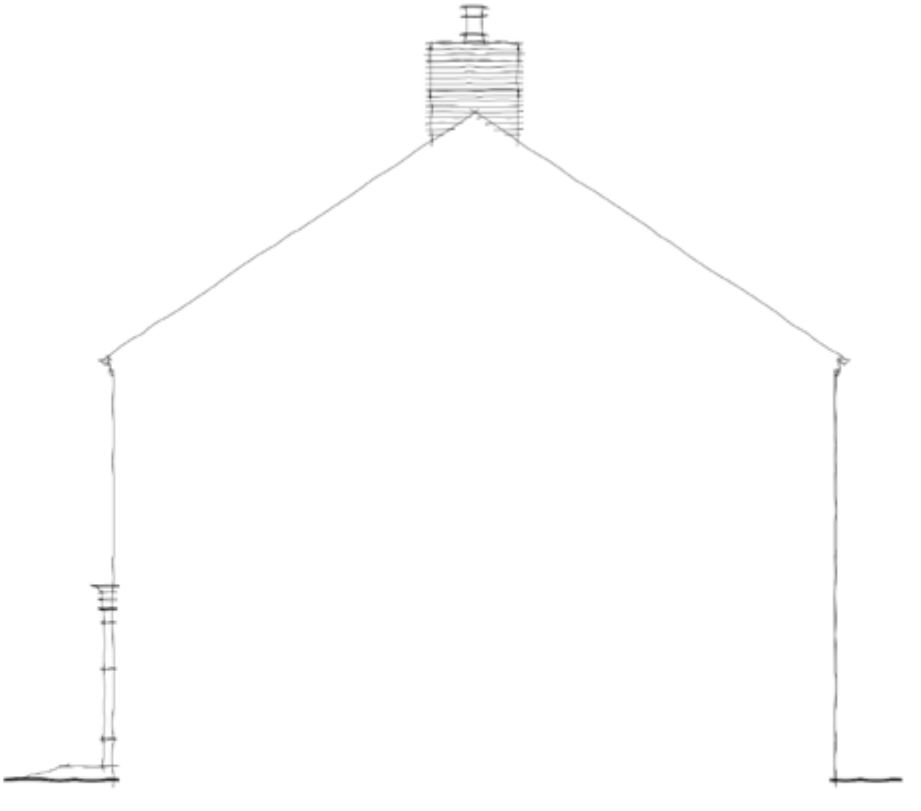
Side Section



Ground Floor Plan



Rear Elevation



Side Section

Arun SP (Mid) 6.0 * | 850sqft / 79sqm

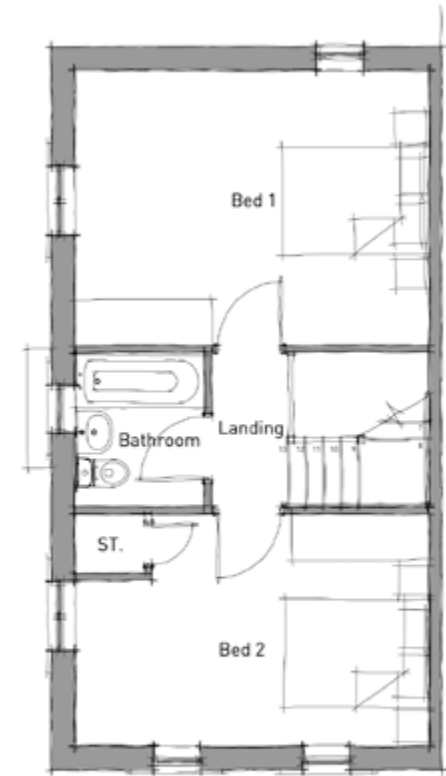
Drawing ref: P20-3215_10 - 22

Arun SP (Mid) 6.1 * | 850sqft / 79sqm

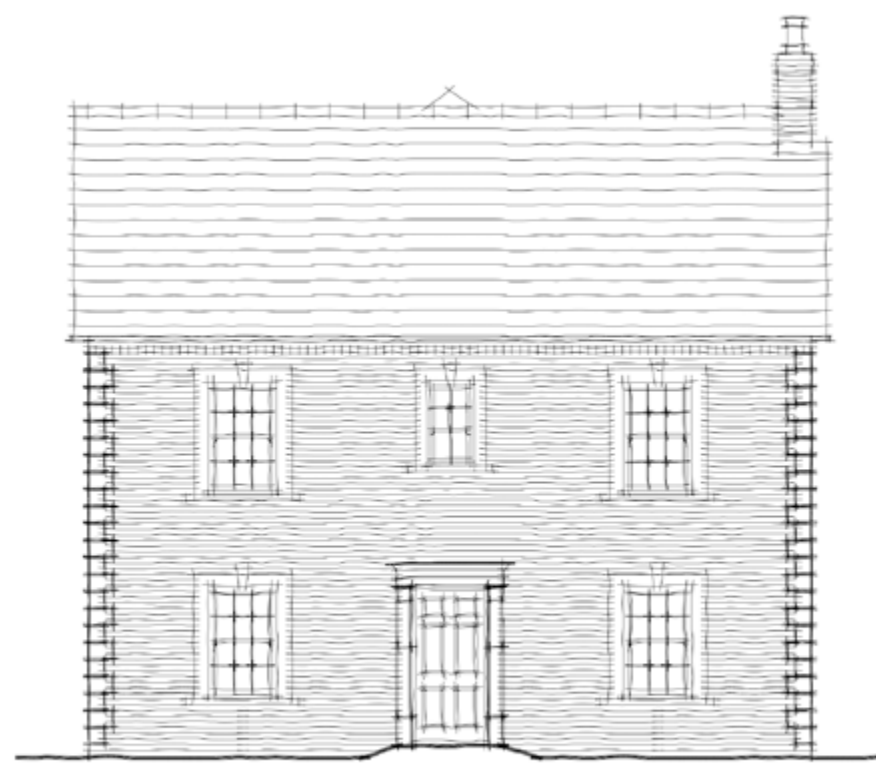
Drawing ref: P20-3215_10 - 23

Prepared and presented by Pegasus Group on behalf of Countryside Properties Ltd. Drawing to be read in conjunction with accompanying planning drawings.

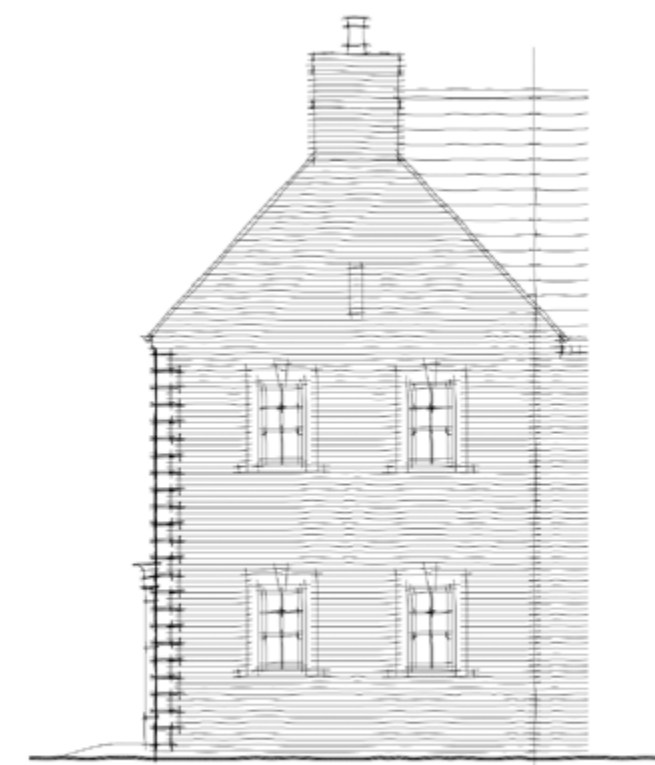
Prepared and presented by Pegasus Group on behalf of Countryside Properties Ltd. Drawing to be read in conjunction with accompanying planning drawings.



First Floor Plan



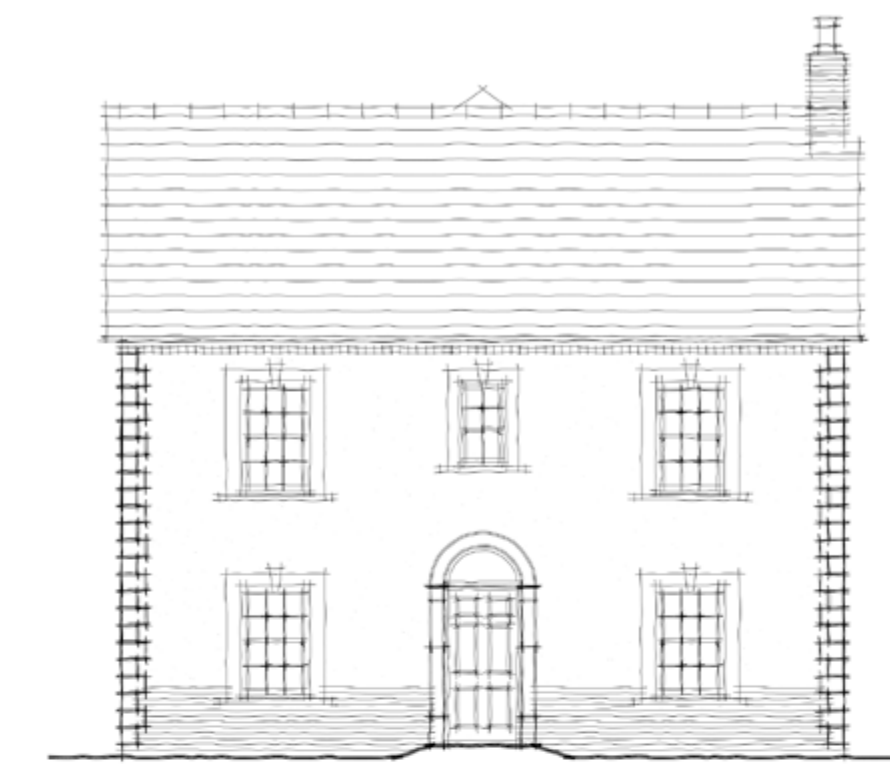
Front Elevation



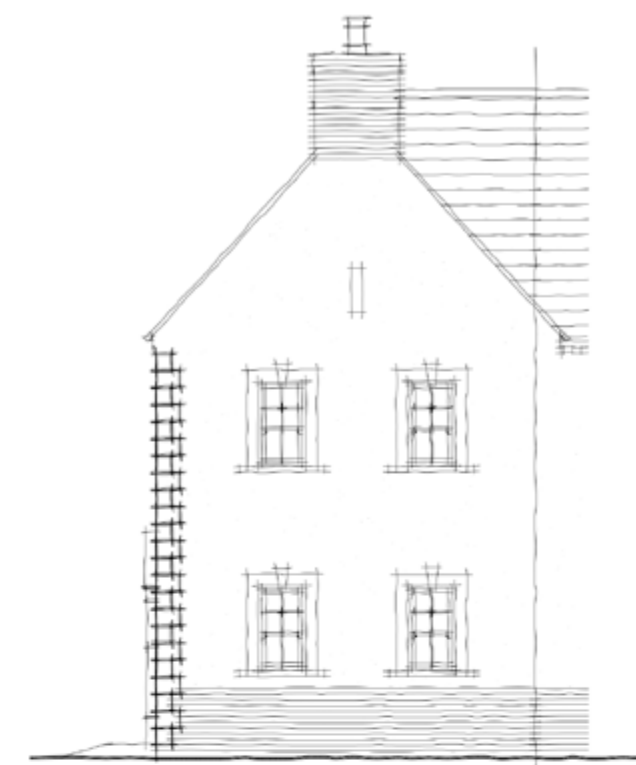
Side Elevation



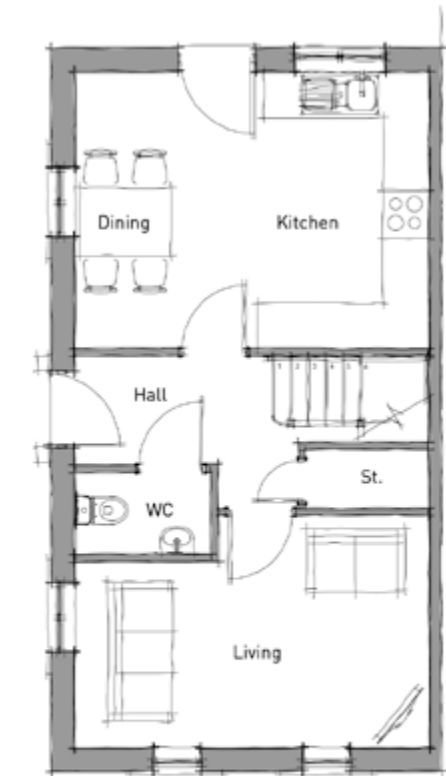
First Floor Plan



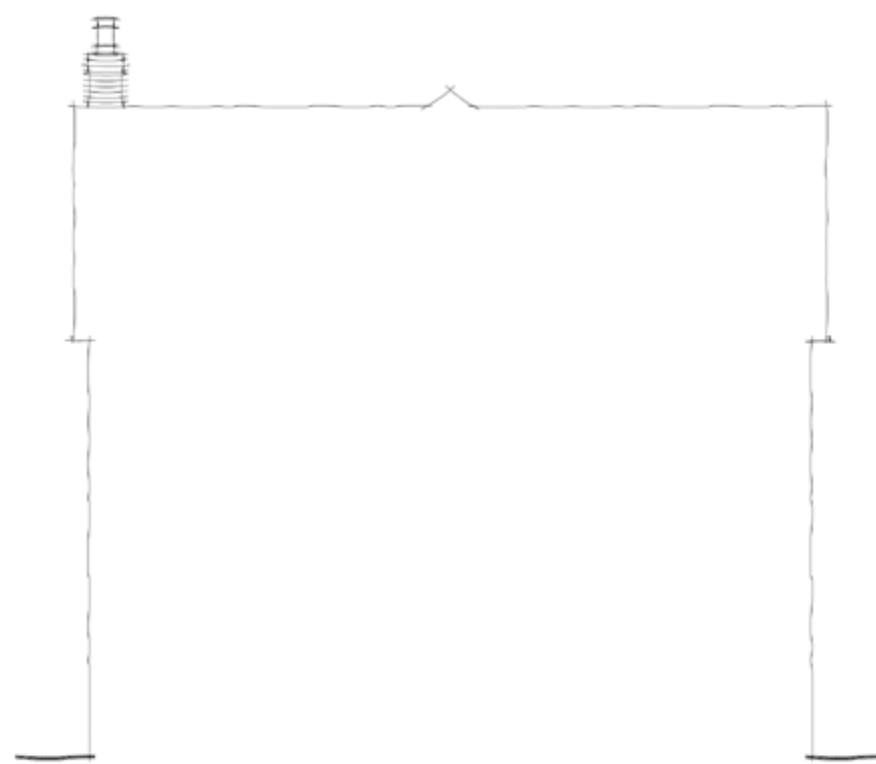
Front Elevation



Side Elevation



Ground Floor Plan



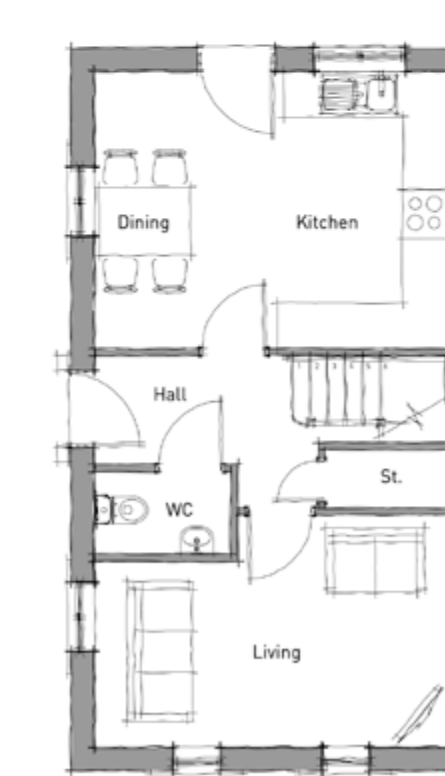
Rear Section



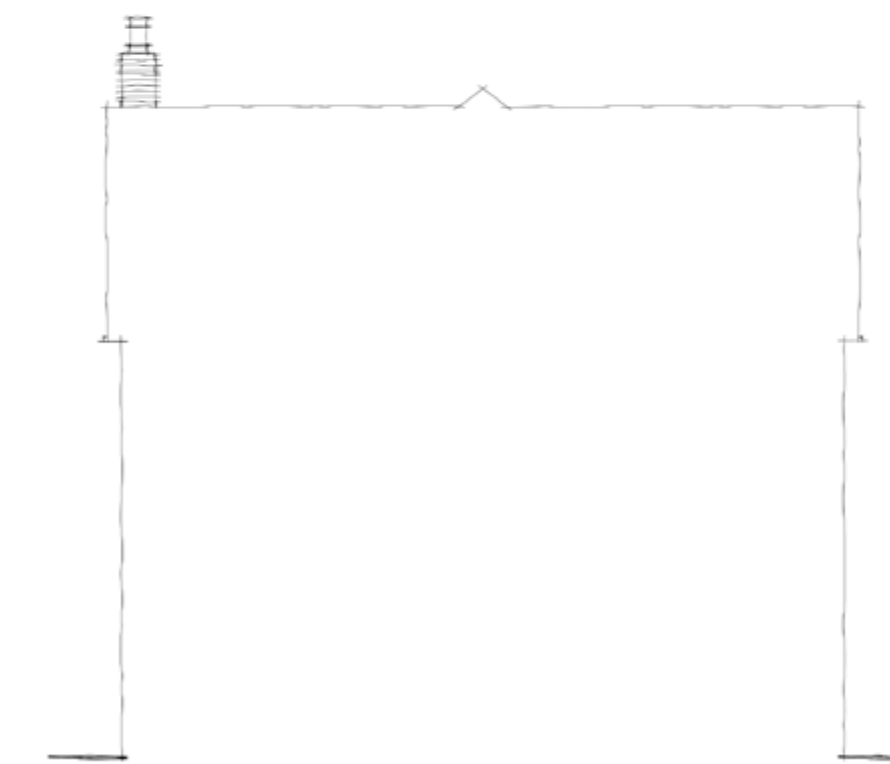
Side Elevation

Chestnut SP (End) 6.0 * | 897sqft / 83sqm

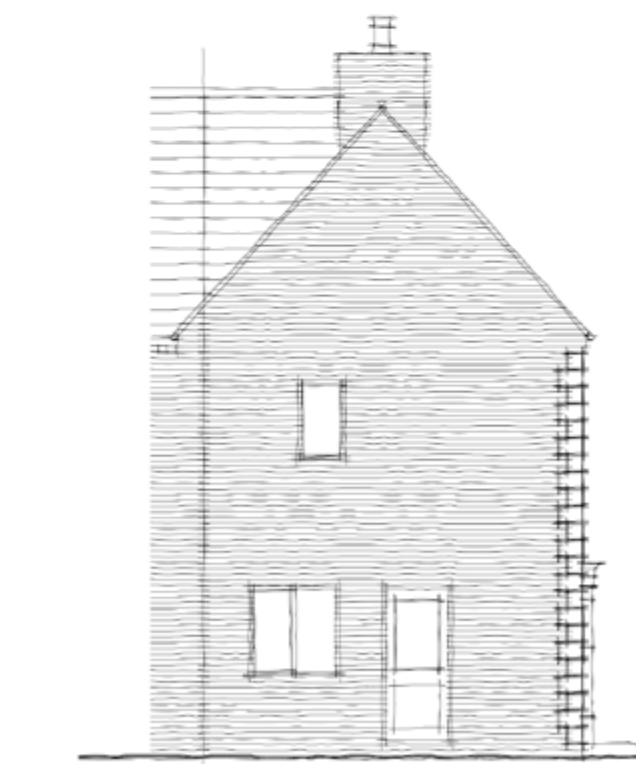
Drawing ref: P20-3215_10 - 24



Ground Floor Plan



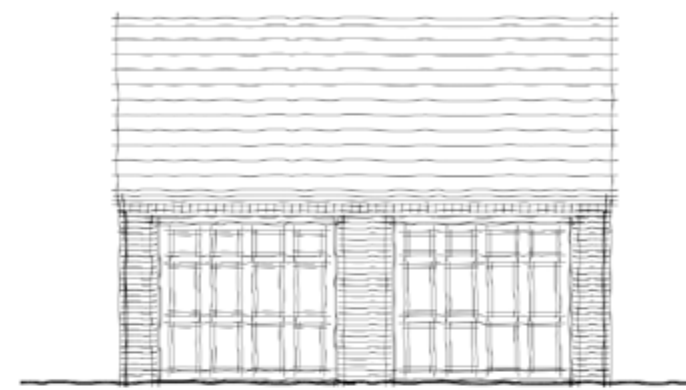
Rear Section



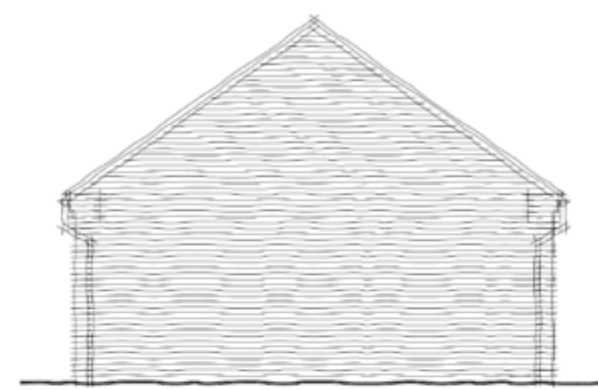
Side Elevation

Chestnut SP (End) 6.1 * | 897sqft / 83sqm

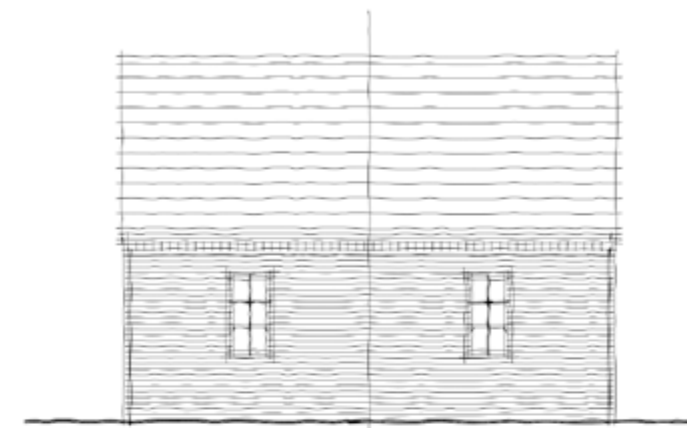
Drawing ref: P20-3215_10 - 25



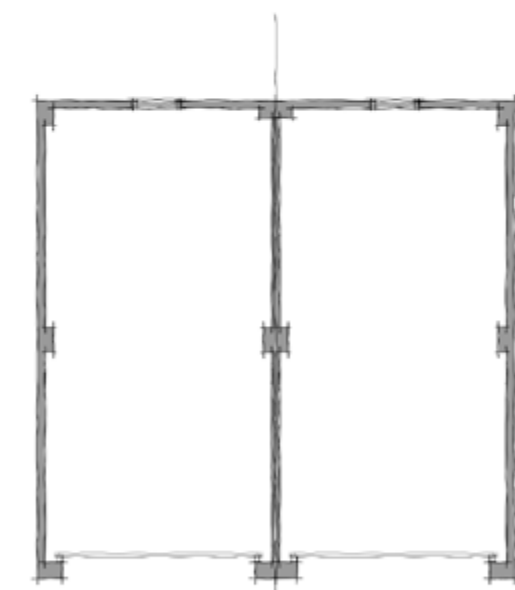
Front Elevation



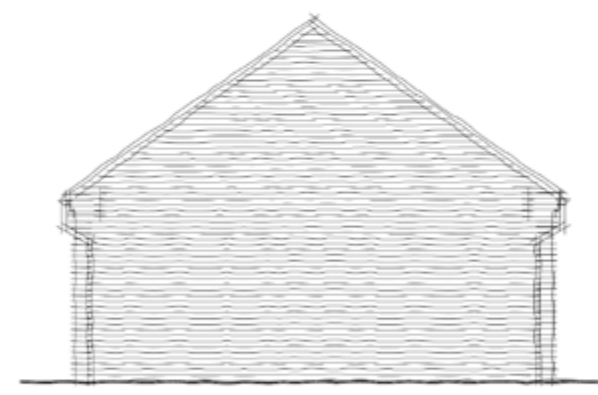
Side Elevation



Rear Elevation



Ground Floor Plan



Side Elevation

THIS PAGE INTENTIONALLY LEFT BLANK

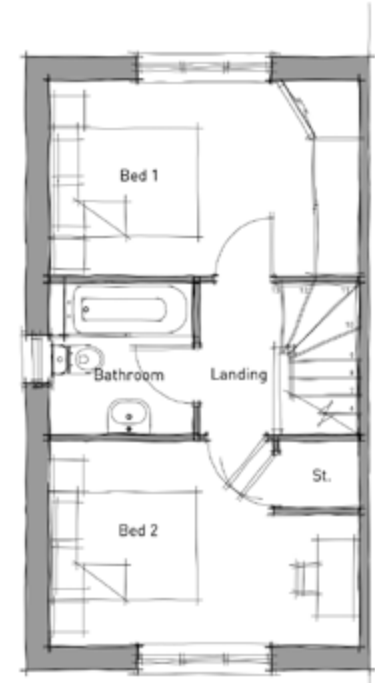
Prepared and presented by Pegasus Group on behalf of Countryside Properties Ltd.
Drawing to be read in conjunction with accompanying planning drawings.



Twin Garage
Drawing ref: P20-3215_10 - 26

Prepared and presented by Pegasus Group on behalf of Countryside Properties Ltd.
Drawing to be read in conjunction with accompanying planning drawings.

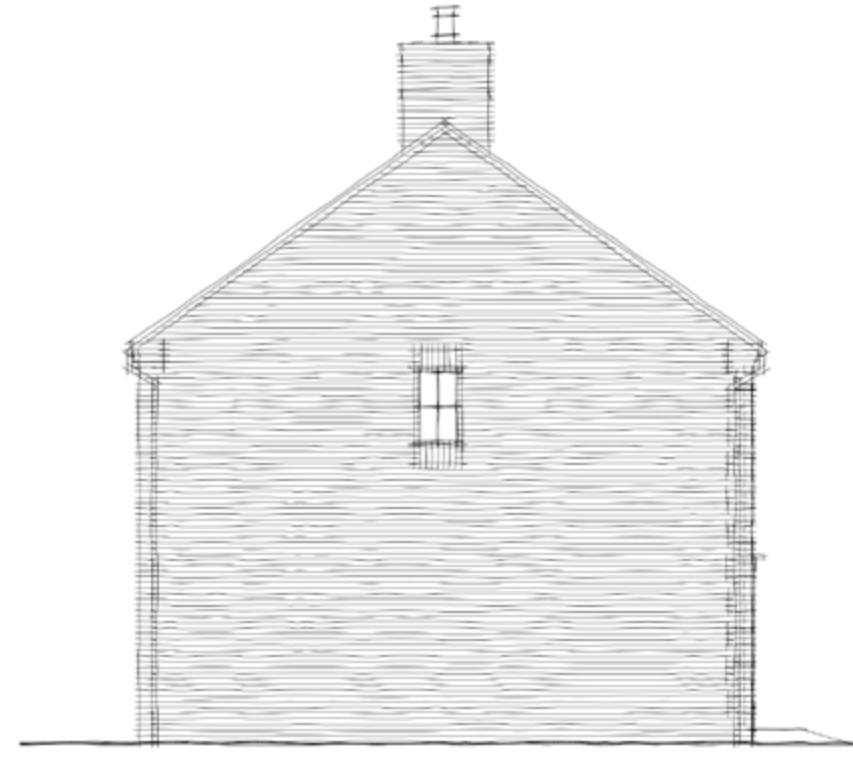




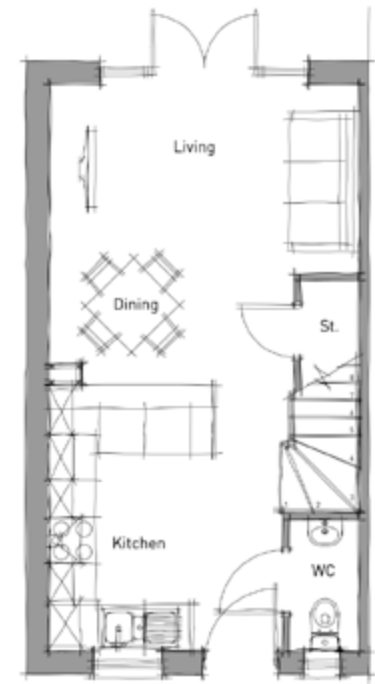
First Floor Plan



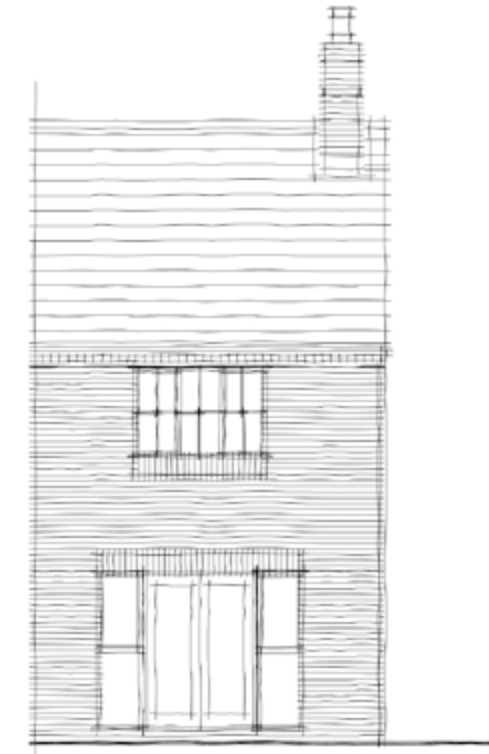
Front Elevation



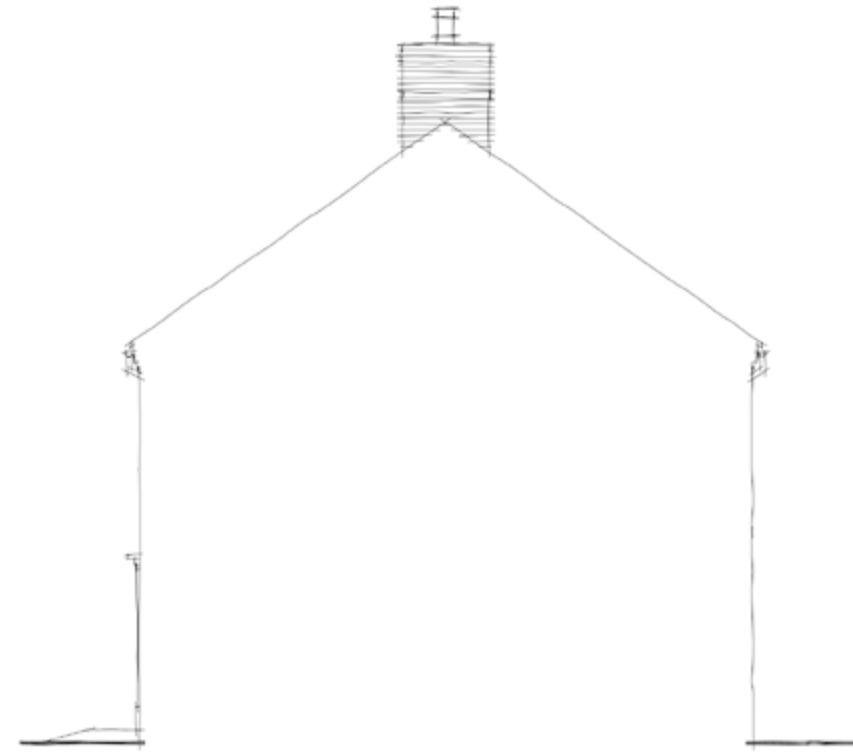
Side Elevation



Ground Floor Plan



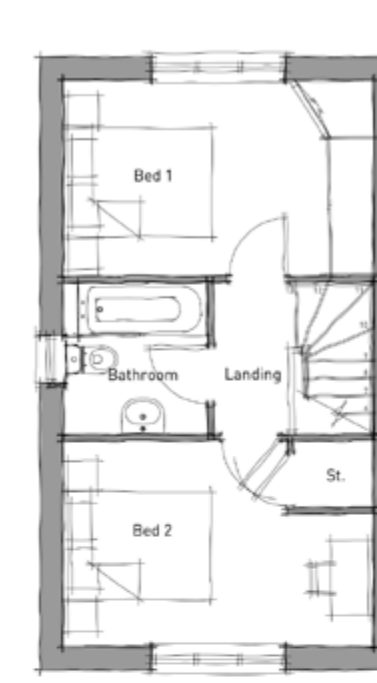
Rear Elevation



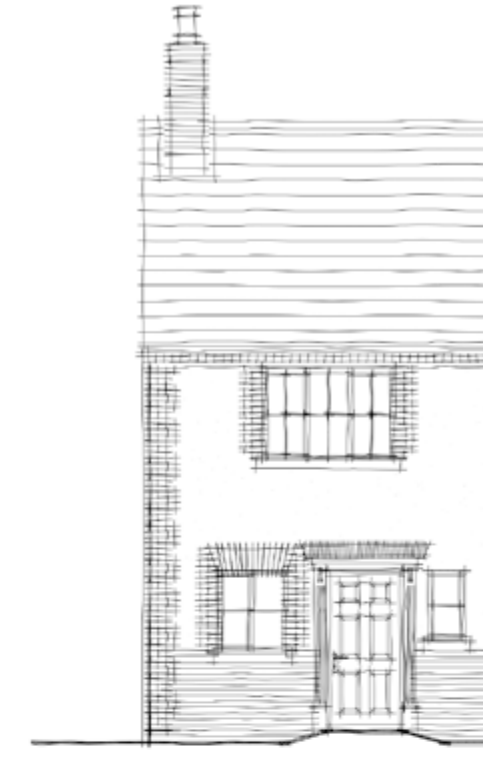
Side Section

Irwell (End) 6.0 | 662sqft / 62sqm

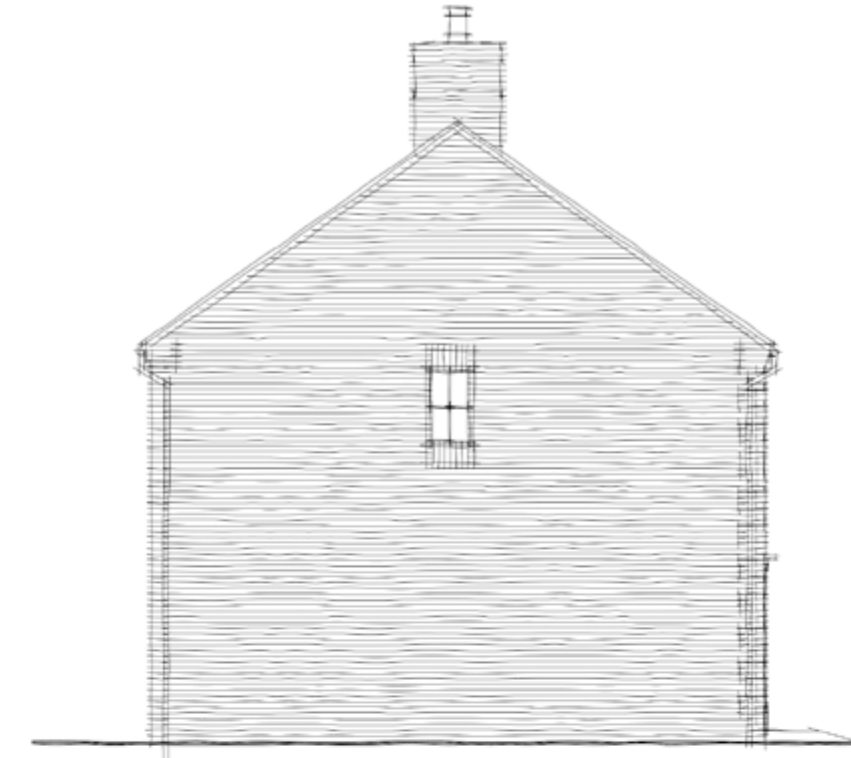
Drawing ref: P20-3215_10 - 28



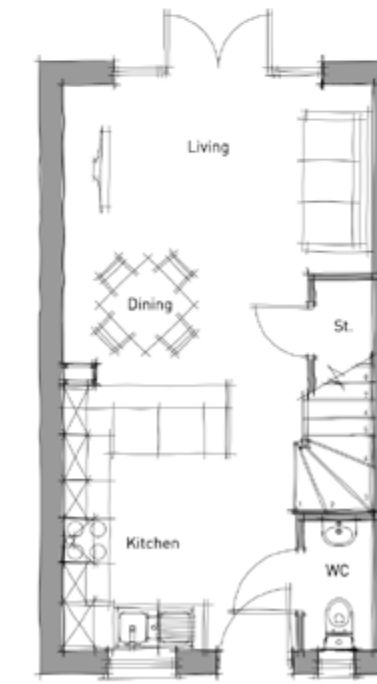
First Floor Plan



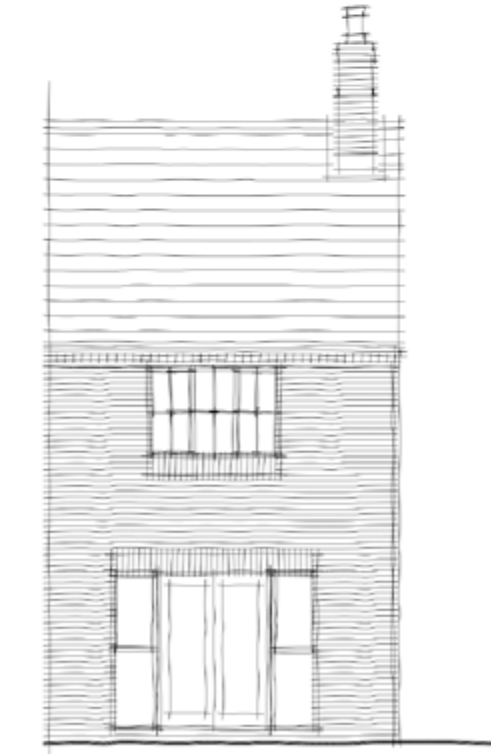
Front Elevation



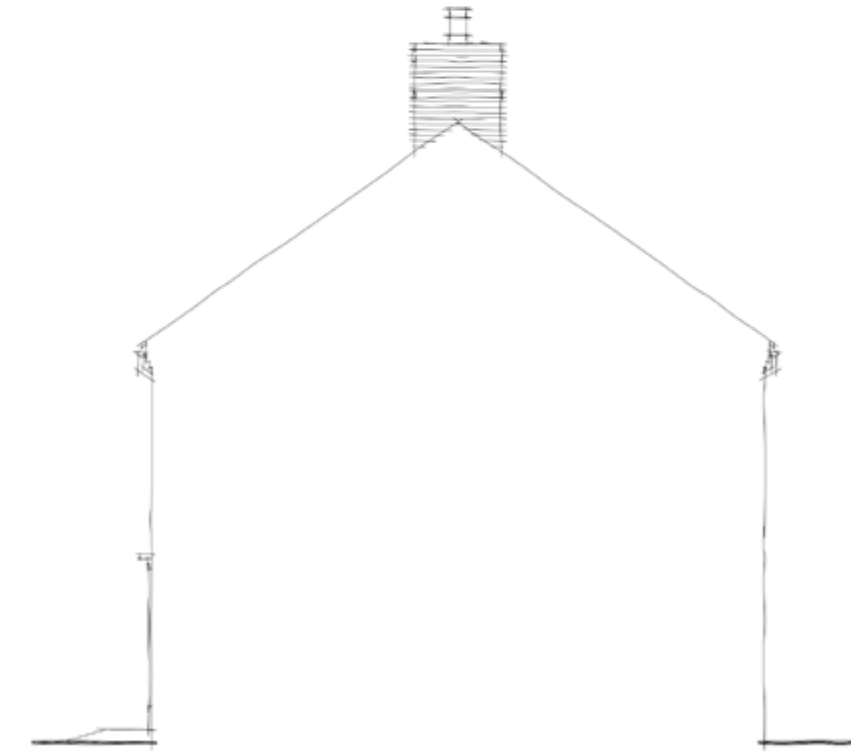
Side Elevation



Ground Floor Plan



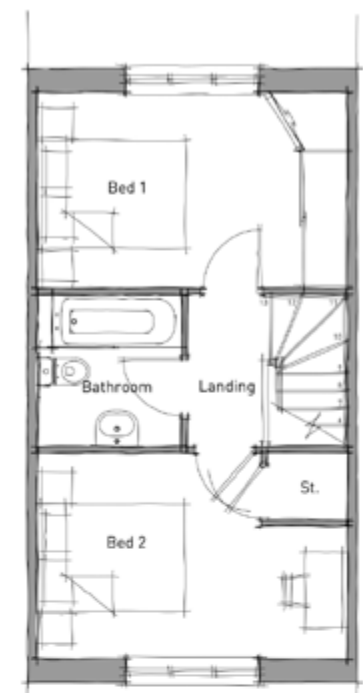
Rear Elevation



Side Section

Irwell (End) 6.1 | 662sqft / 62sqm

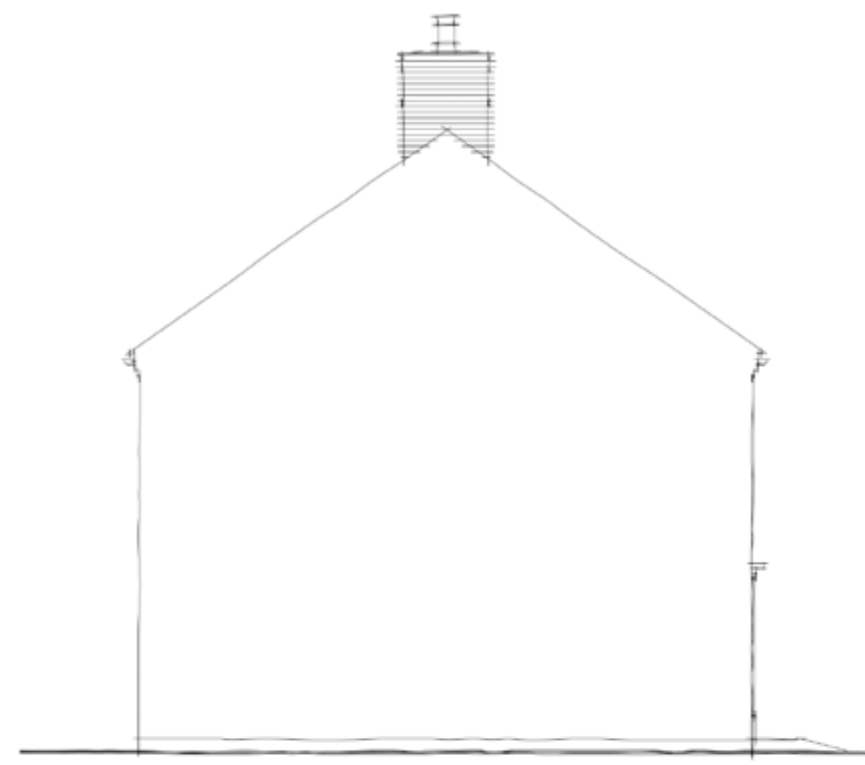
Drawing ref: P20-3215_10 - 29



First Floor Plan



Front Elevation



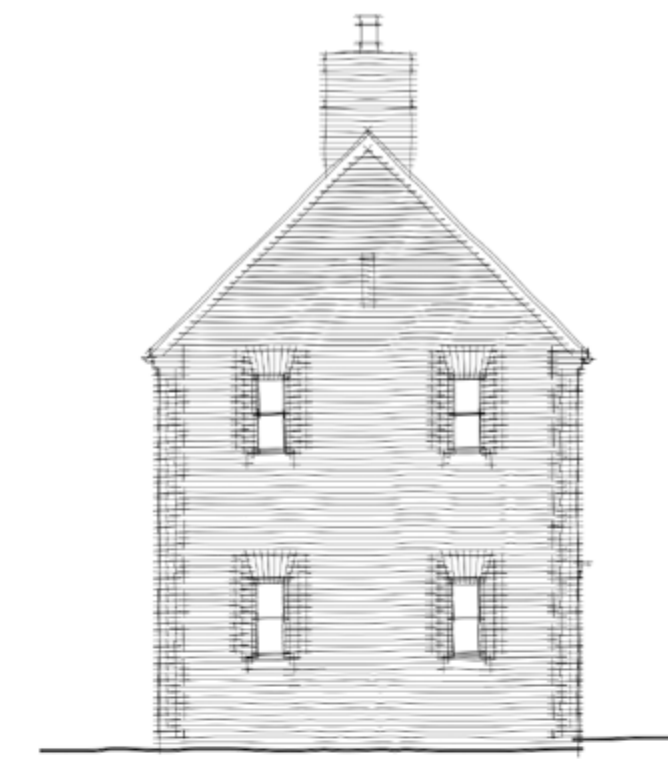
Side Elevation



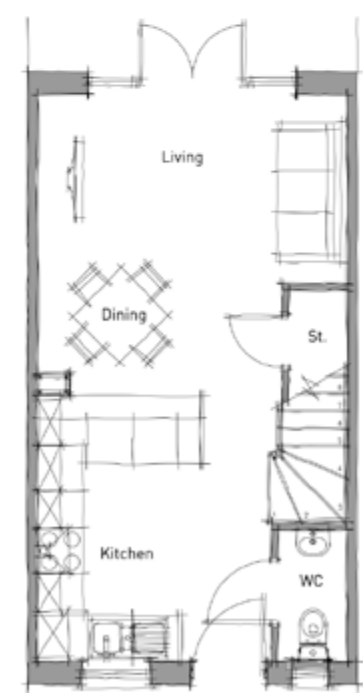
First Floor Plan



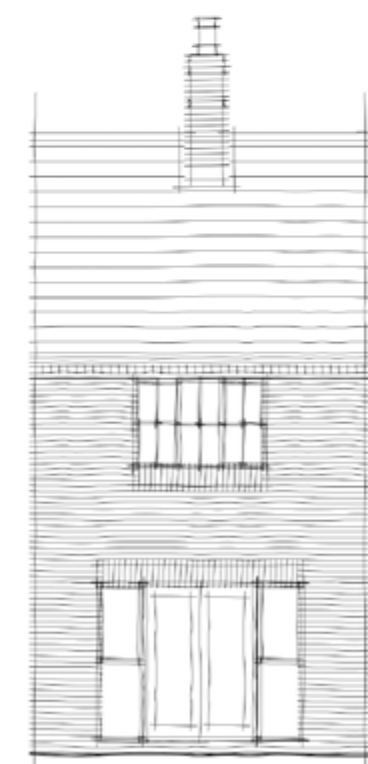
Front Elevation



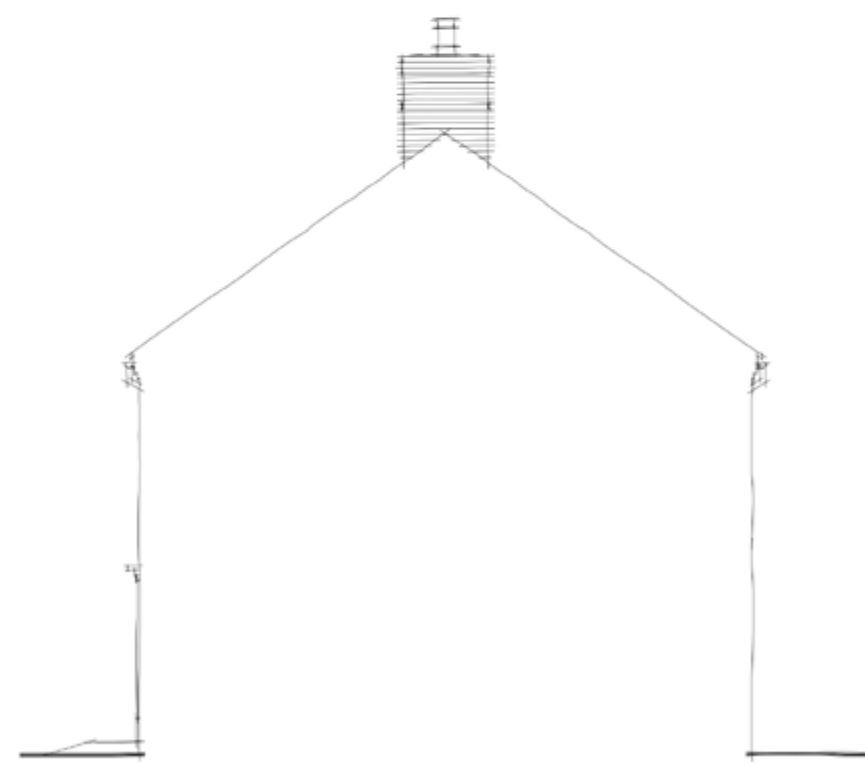
Side Elevation



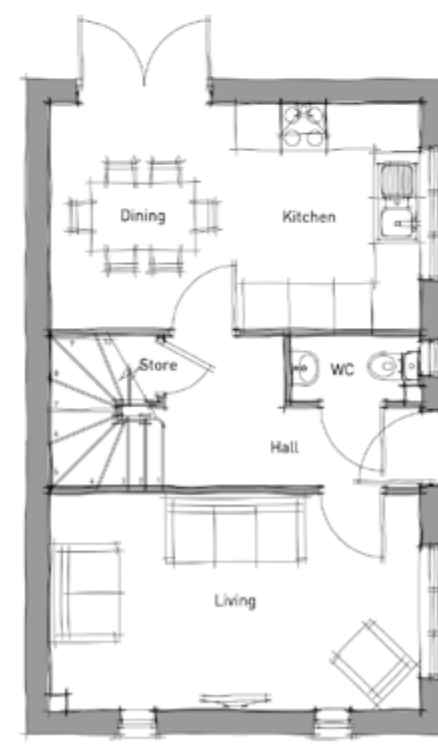
Ground Floor Plan



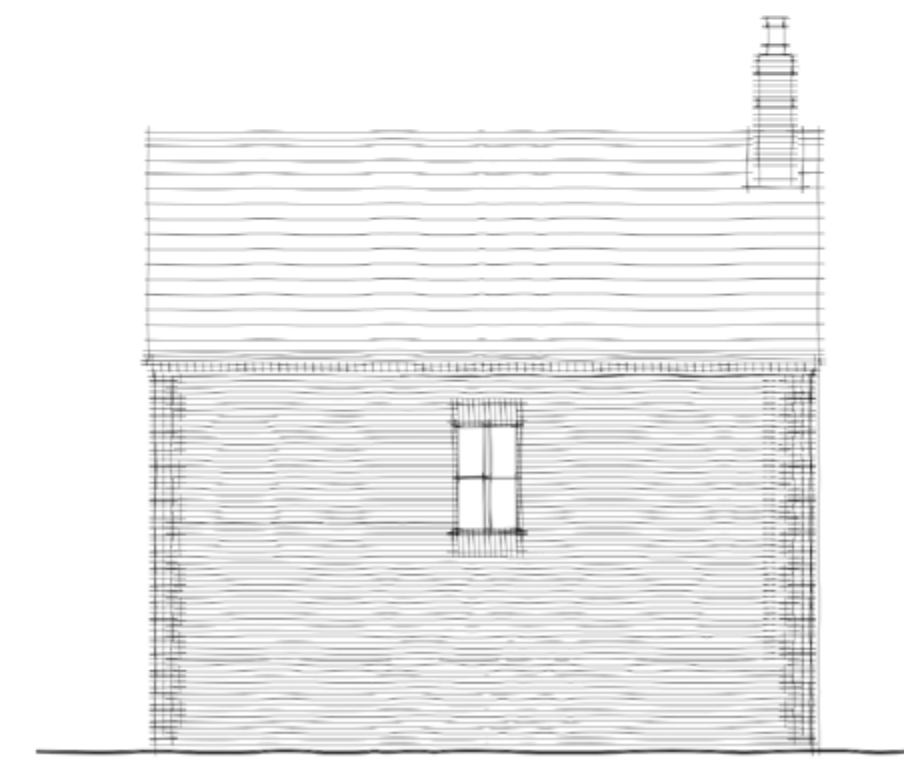
Rear Elevation



Side Section



Ground Floor Plan



Rear Elevation



Side Elevation

Irwell (Mid) 6.0 | 662sqft / 62sqm

Drawing ref: P20-3215_10 - 30

Grantham (Detached) 6.0 | 850sqft / 79sqm

Drawing ref: P20-3215_10 - 31

Prepared and presented by Pegasus Group on behalf of Countryside Properties Ltd. Drawing to be read in conjunction with accompanying planning drawings.

Prepared and presented by Pegasus Group on behalf of Countryside Properties Ltd. Drawing to be read in conjunction with accompanying planning drawings.