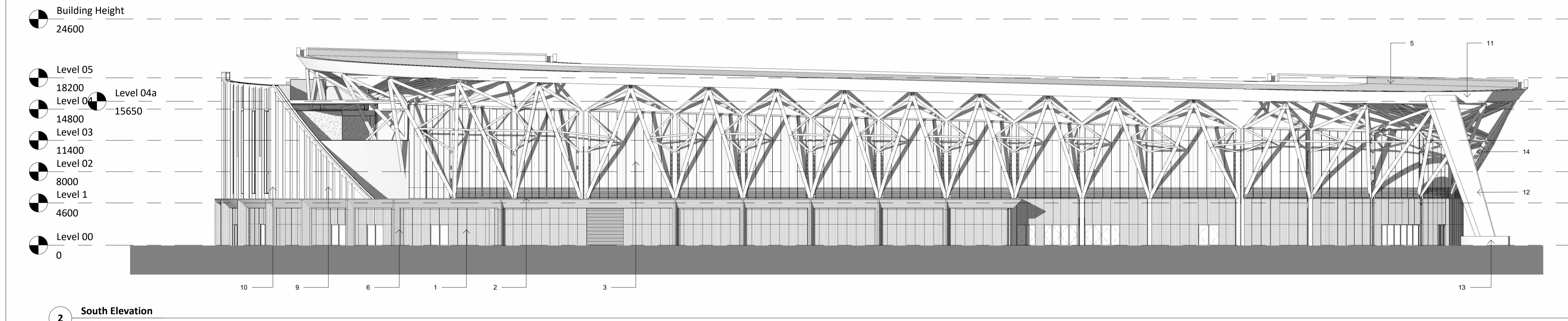


**1 East Elevation**  
1 : 250



**2 South Elevation**  
1 : 250

**EXTERNAL MATERIALS KEY**

1. Precast Flat Panels - Oxford Buff Stone texture
2. Louvers - Dark Grey
3. Translucent Twin Wall Polycarbonate
4. Ventilation Gap
5. Metal Standing Seam Roof
6. Precast Framing Elements
7. Curtain Walling with Glazing (with Spondral Panels)
8. Biodiverse Roof
9. Metal Cladding Panels - Grey/ Blue Colour
10. Metal anodised fins - Blue Tinge
11. Powder coated metal rainwater gutter - colour to match Metal Cladding Panels (9).
12. Purpose made metal rainwater downpipe - colour to match Metal Cladding Panels (9).
13. Purpose made Precast water collecting well - to collect rainwater from roof & divert it to rain gardens & swales.
14. Structural Steel Frame
15. Powder Coated Metal Sign.

**NOTES**  
All dimensions and levels to be checked on site  
Any discrepancies are to be reported to the Architect before any work commences  
This drawing shall not be scaled to ascertain any dimensions, work to figured dimensions only  
This drawing shall not be reproduced without express written permission from AFL Architects Ltd.

**DISCLAIMER**  
When this drawing is issued in CAD, it is an uncontrolled version issued for information only, to enable the recipient to prepare their own documents/drawings for which they are solely responsible.

**SOFTWARE INTRODUCTION**  
AFL prepared this drawing using Autodesk REVIT Architecture.

AFL does not accept liability for any loss or degradation of any information held in the drawing resulting from the translation from the original file format to any other file format or from the recipient's reading of it in any other programme.

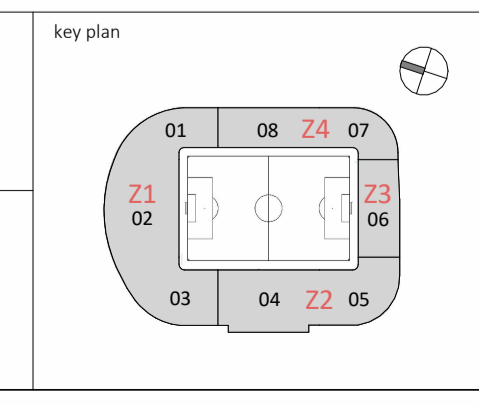
P13	16/02/24	DC	Planning Issue.
rev no.	rev date	rev by	description

client  
**Oxford United Football Club**



AFL Architects  
1st Floor, St Georges House  
56 Peter Street, Manchester UK  
M2 3NQ

t: +44(0)161 236 6263  
f: +44(0)161 236 6484  
w: www.afl-architects.com  
e: mail@afl-uk.com  
twitter.com/AFLArchitects

project  
**Oxford United Football Club**

location  
**Oxford**

drawing title  
**Elevations - East & South Stand**

AFL job number 221524	scale @ A1 1:250	drawn BT	checked DC
rev date 16/02/24	rev date	status S2	rev P13
bim project origin zone level type role 6-digit no. <b>OUFC-AFL-ZZ-DR-A-202002</b>			