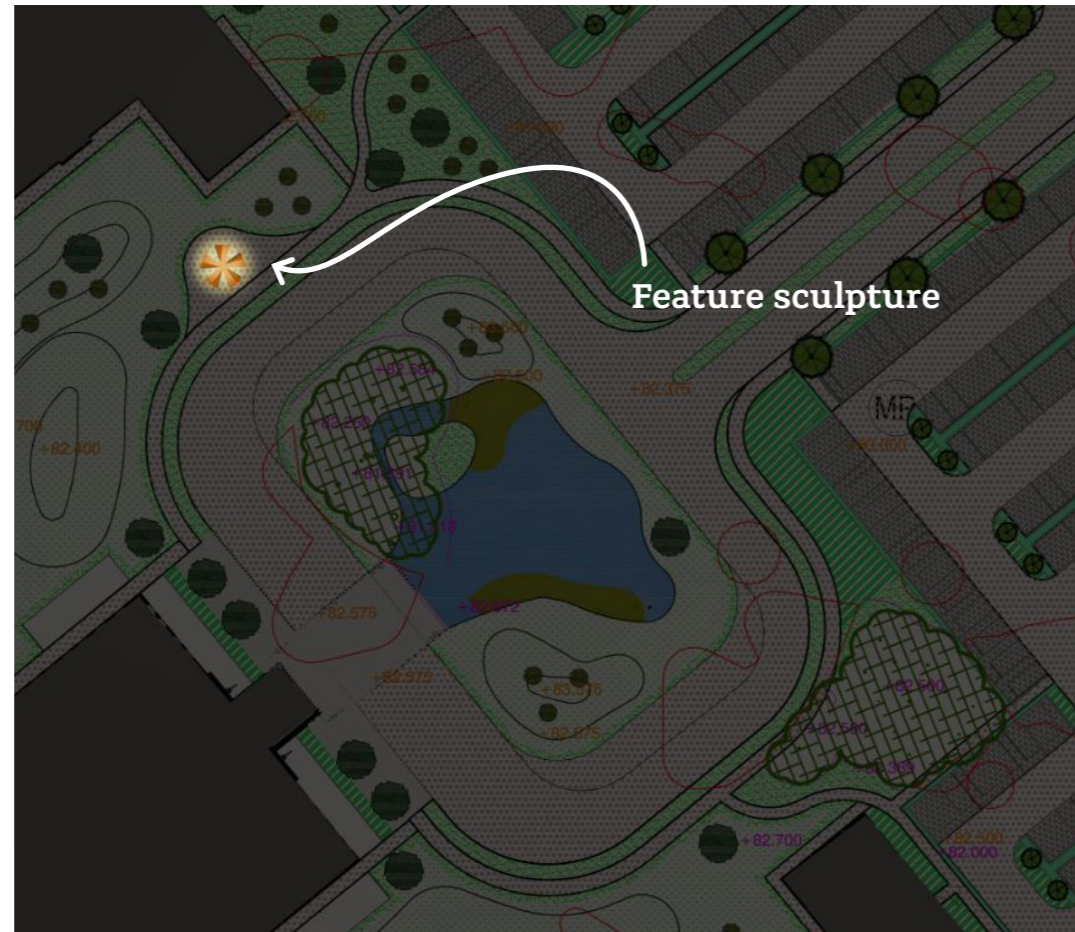


### Main Entrance.

#### Feature sculpture

Adjacent to the main entrance drop off area, there is to be a feature sculpture.

Lighting is to be proposed to illuminate the sculpture, however the exact treatment would be dependant on the final piece.



## Main Entrance.

### Architectural lighting

It is proposed that architectural lighting will be kept to a minimum to ensure the exterior scheme does not have a negative impact on the interior spaces of the proposed development.

Because guest rooms are the main use for these interior areas, it is critical light pollution is mitigated.

It is proposed that architectural lighting will be confined to the main resort entrance with discrete lighting integrated within the porte cochere structure. Illuminating the framework will accentuate the structure while drawing attention into the building.

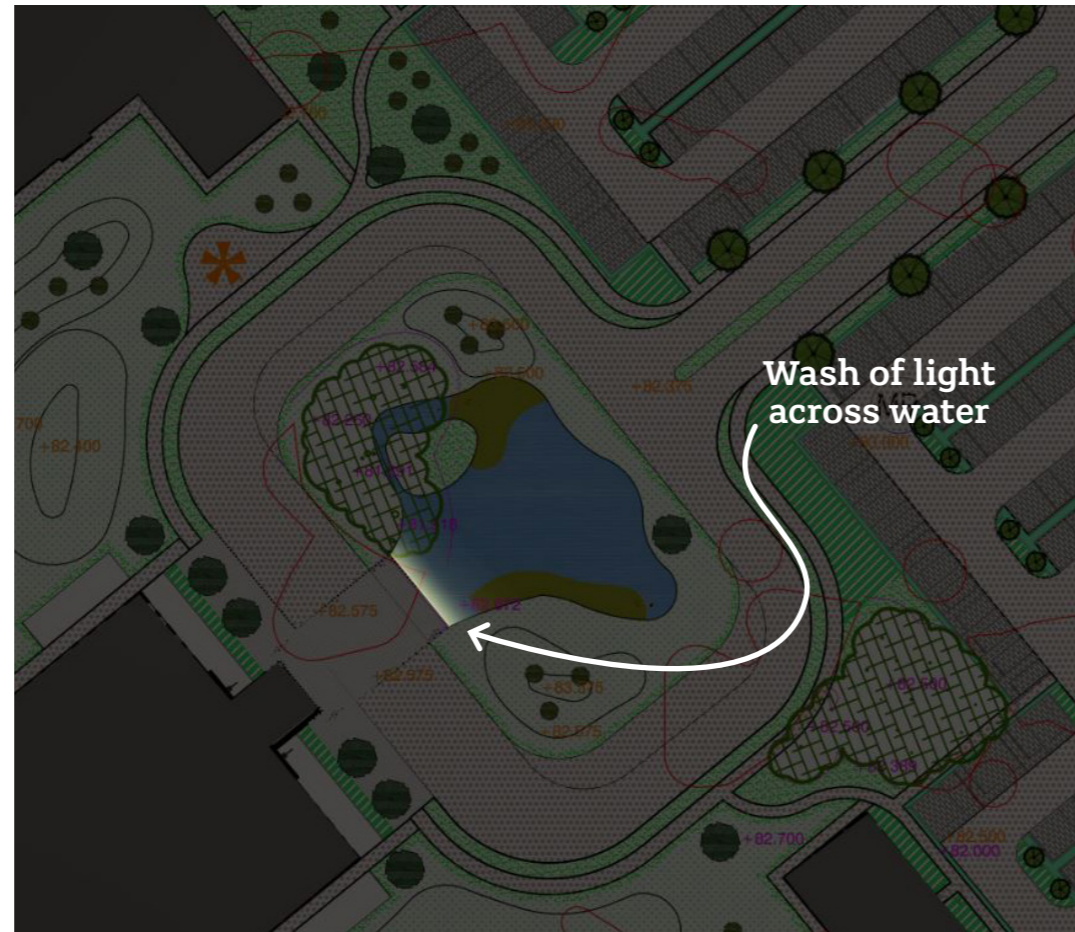


### Main Entrance.

#### Concealed lighting

Located to the front of the entrance is a terraced area which overlooks onto a body of water. This is central to the drop off zone.

Concealed beneath this terrace edging, lighting will be integrated to wash light down and out across the water.



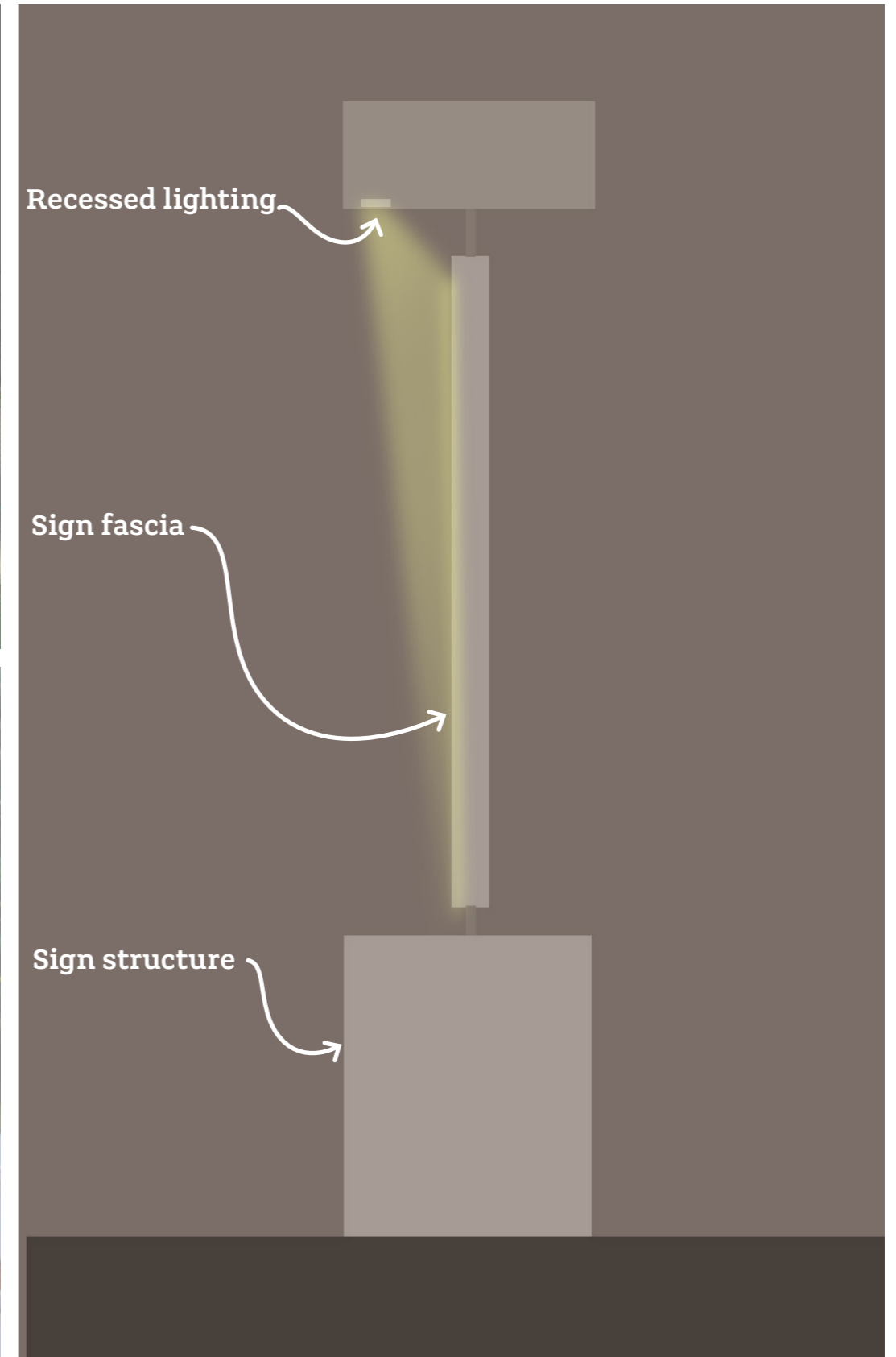
### Main Entrance.

#### Entrance Signage

The site entrance is announced with signage. It is proposed this sign is discretely illuminated for views after dark.

The lighting will be integrated into the sign structure to provide a wash of light across the fascia.

The exact location and design of the sign is to be confirmed, and the lighting will be developed to suit.

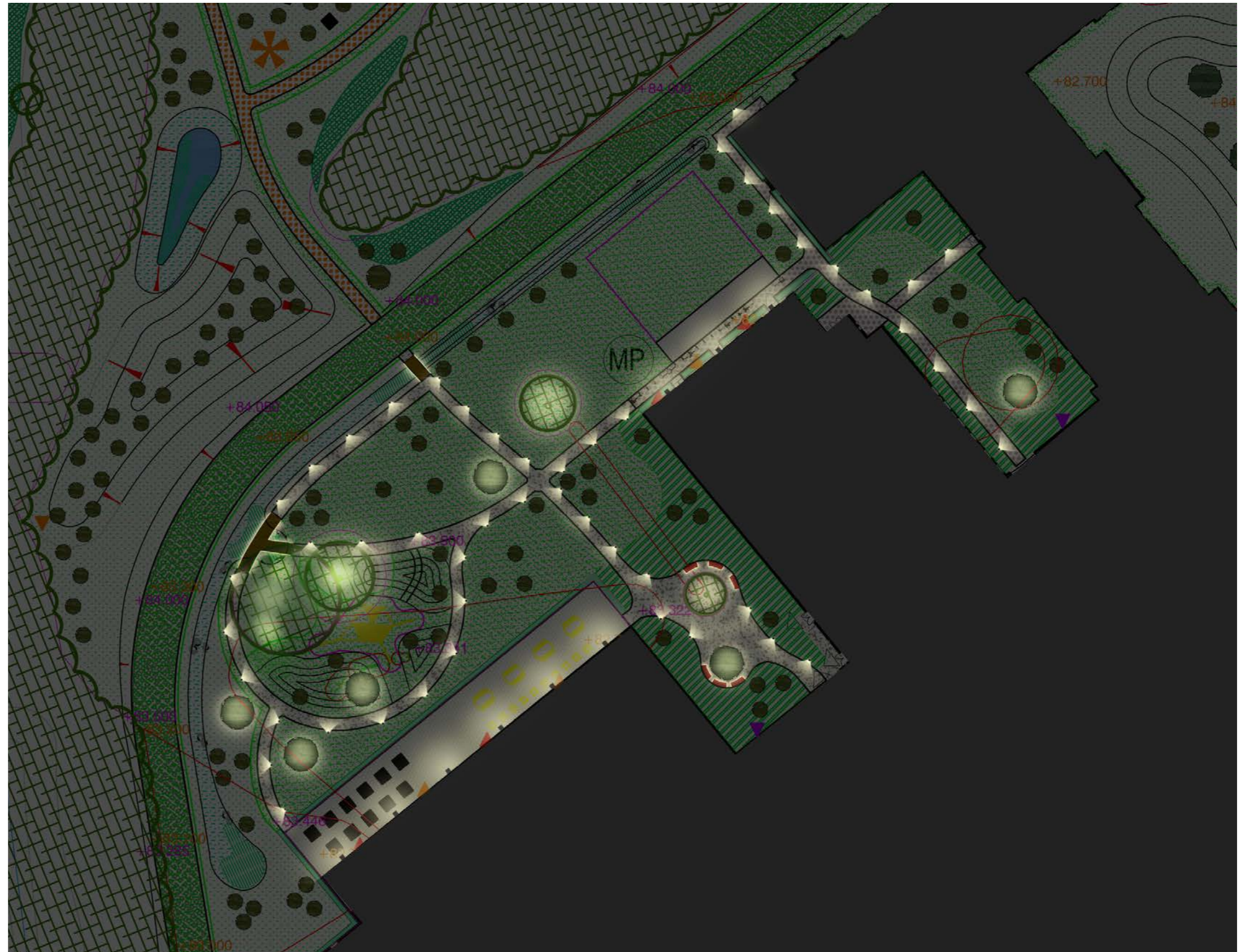


### FEC Open Area.

Located to the north west of the resort the FEC Open Area offers an external space for the hotel facilities.

With the provision of a marquee site the area could cater for evening functions. With this in mind an exterior scheme has been developed to offer an inviting and attractive space.

A number of different lighting techniques are proposed to deliver illumination offering interest and focus.

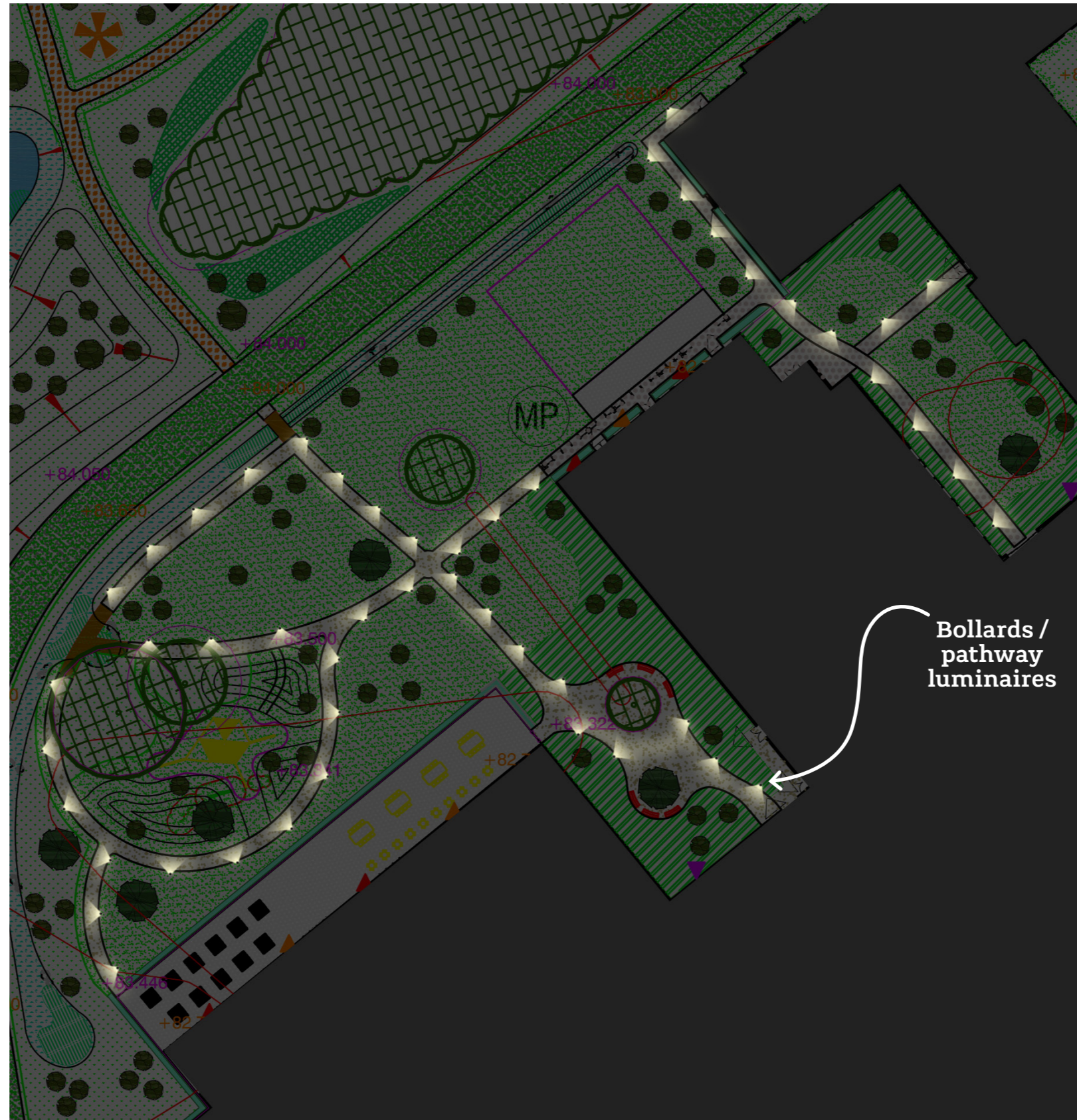


### FEC Open Area.

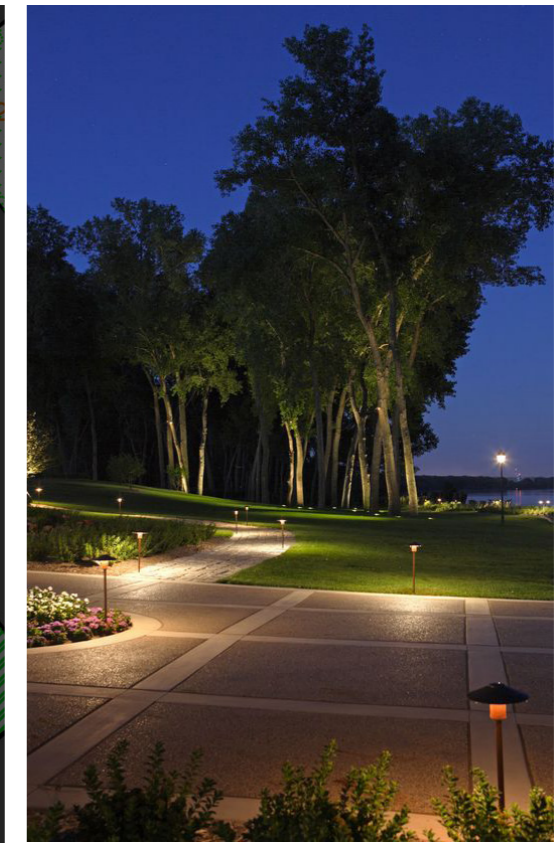
#### Pathways

To encourage the use of the space after dark there are several small walkways in and around the FEC open area which will be illuminated with bollards. Specific lux levels and uniformity will not be targeted in these areas, but enough light will be provided for safe way-finding.

A select number of these bollards will also be used to provide emergency illumination to the muster locations to this side of the building.



Bollards /  
pathway  
luminaires



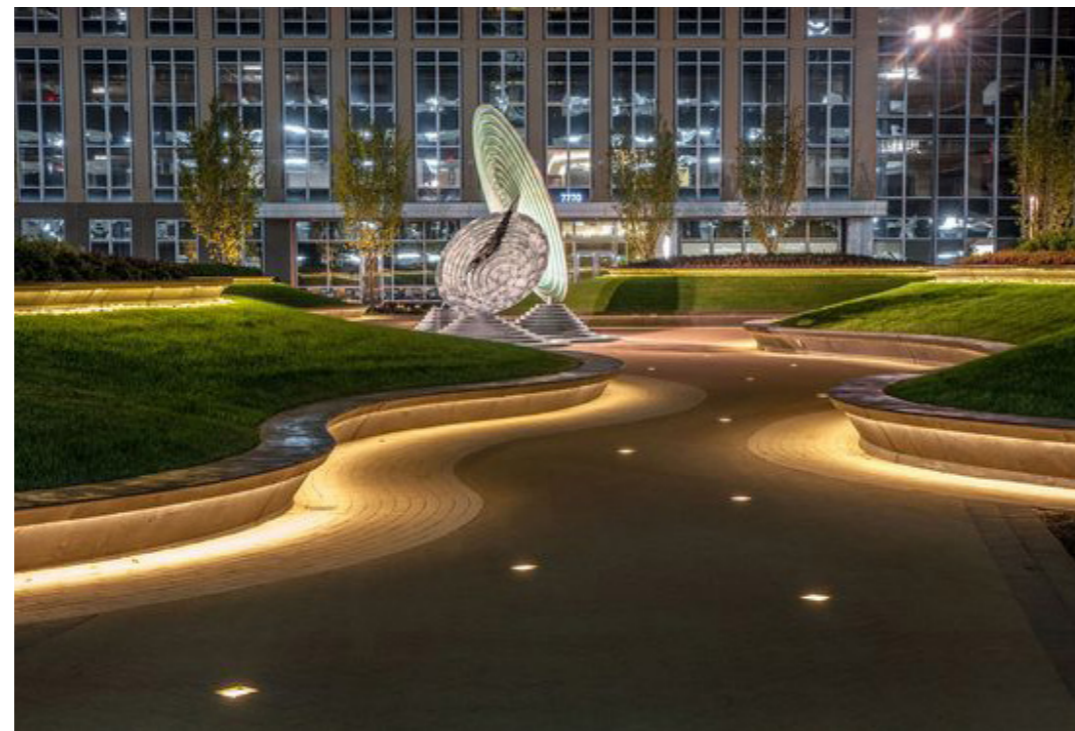
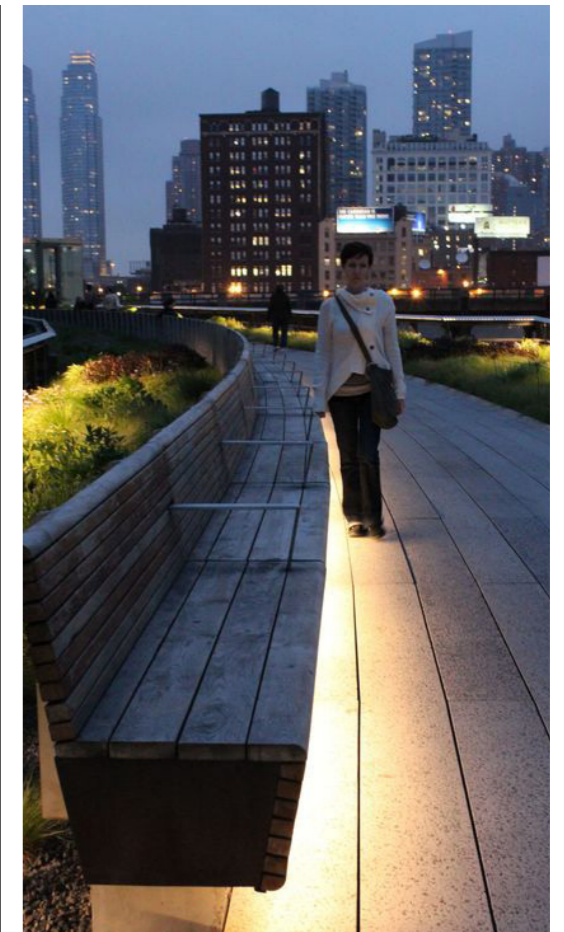
### FEC Open Area.

#### Bench lighting

Integrating concealed lighting within the benches to provide navigational illumination will offer a more intimate feel to the space during darker hours.

This approach will also give variation from the bollard lights providing the general navigational illumination adding contrast and interest.

By incorporating this lighting element within the furniture it offers subtle navigational light by night whilst having no visual impact on the space during the day.

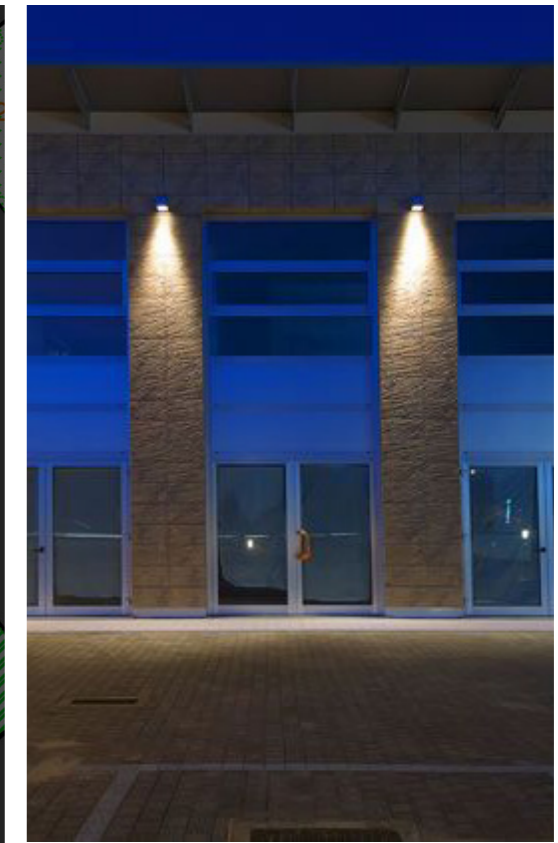
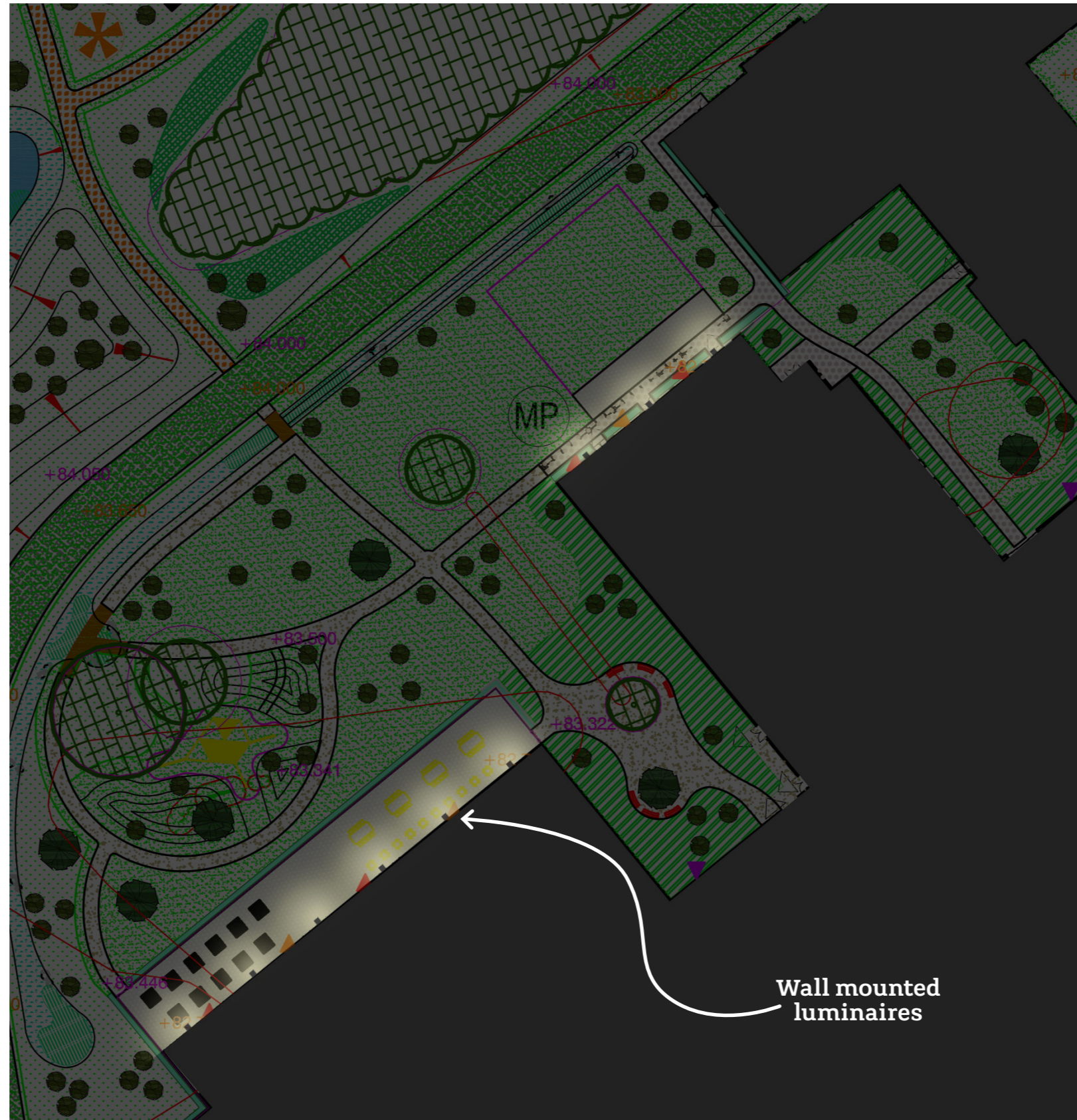


**FEC Open Area.**

**Terraced areas**

There are two external breakout areas, which comprise of a terraced area for circulation and seating.

Wall mounted luminaires are proposed to provide a level of general illumination over these areas. Utilising the buildings facade reduces the visual impact the luminaires have within the space.





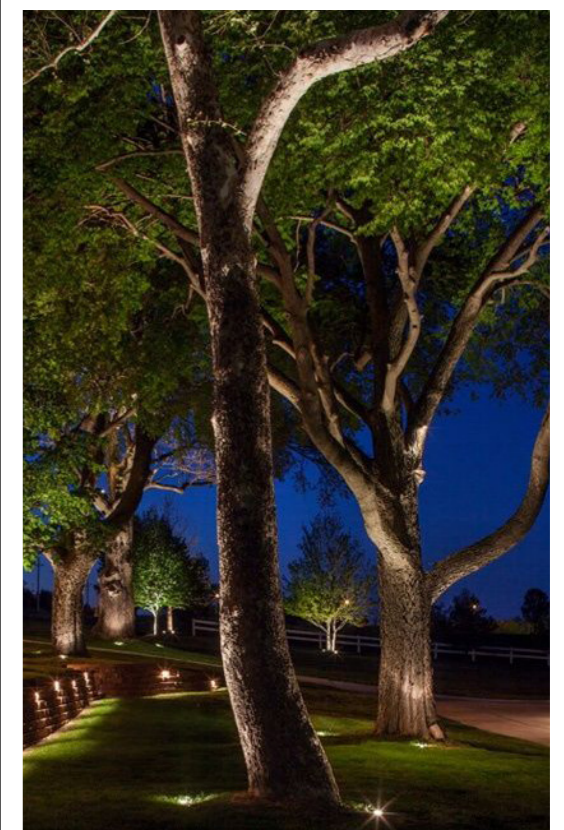
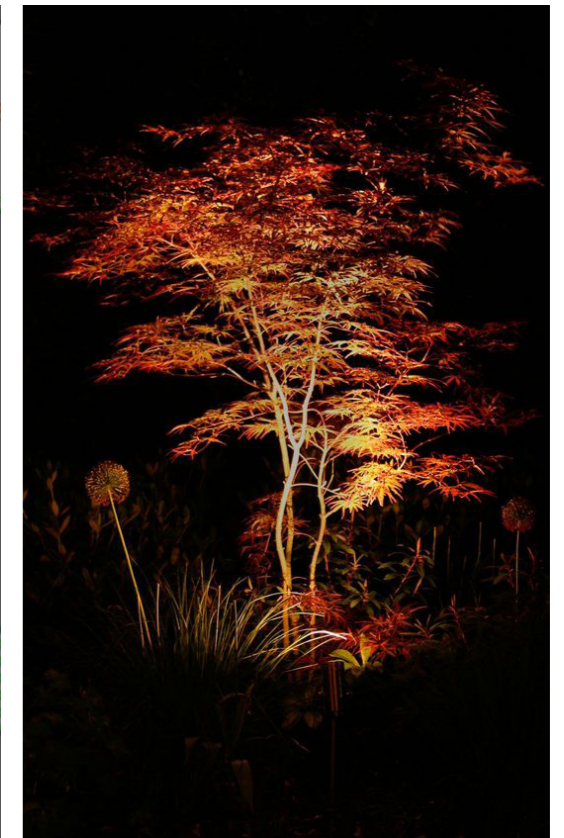
### FEC Open Area.

#### Trees

The larger trees within the FEC Open Area will benefit from uplighting, to provide pockets of vertical illumination of the space.

Only illuminating the larger trees provides a variance across the space. This will cast shadows and patterns, through canopies of light.

This approach will create an attractive backdrop when the area is utilised after dark.



Tree uplighters

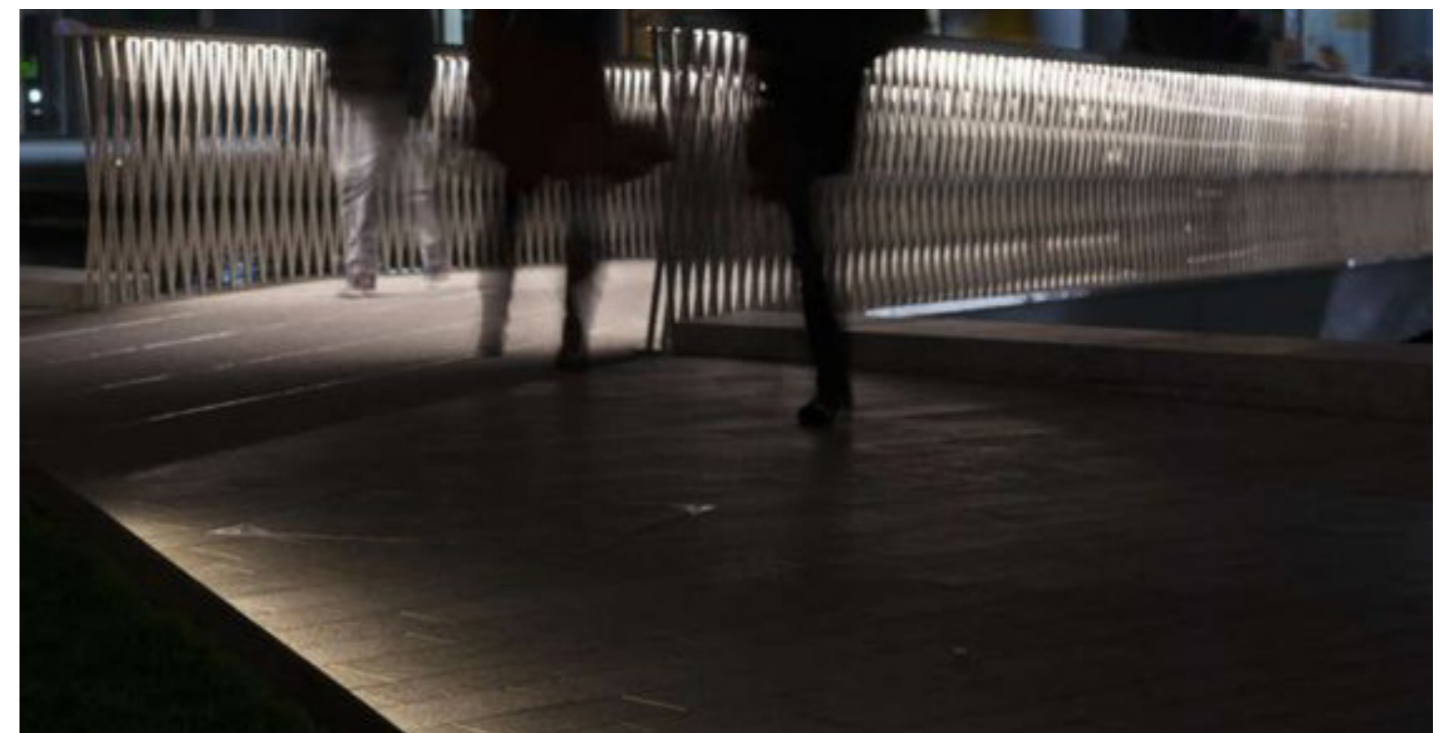
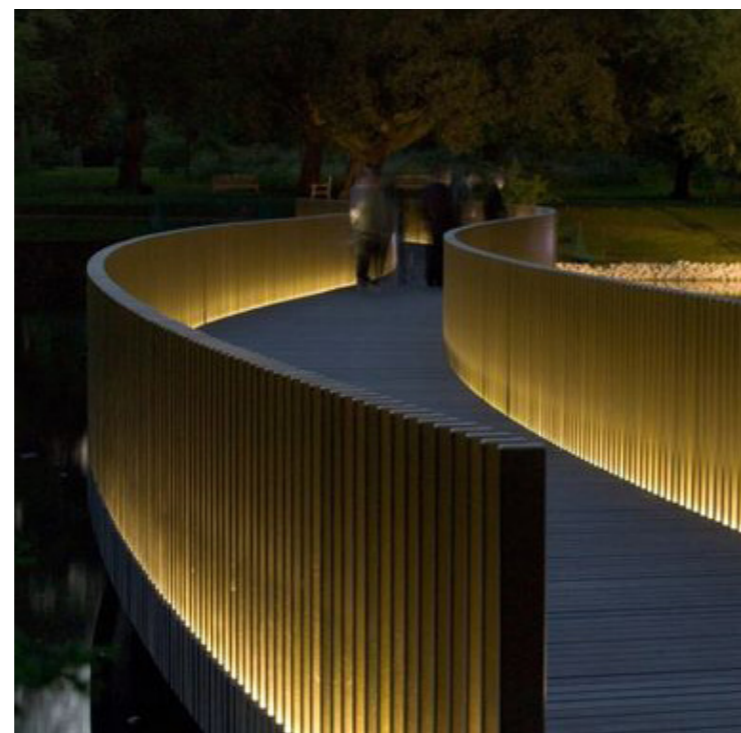
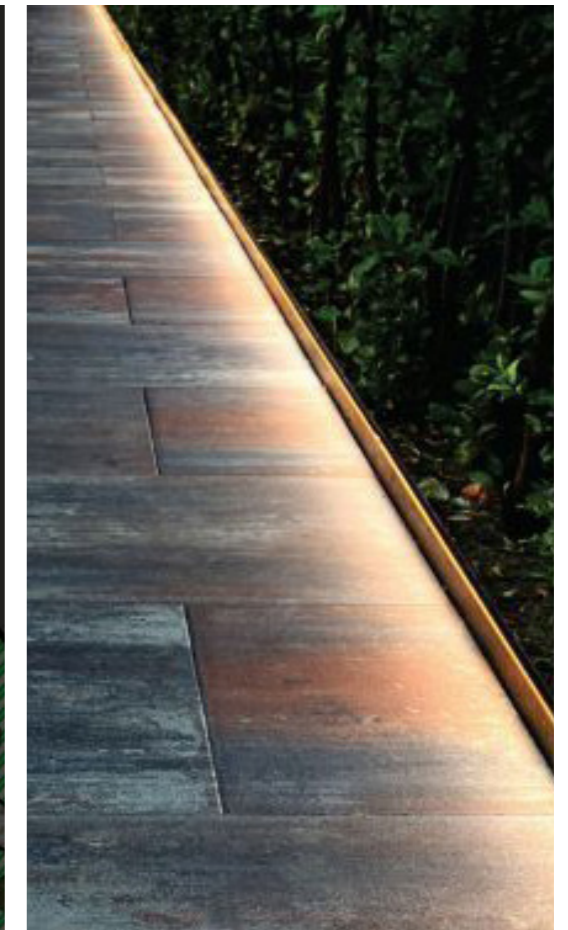
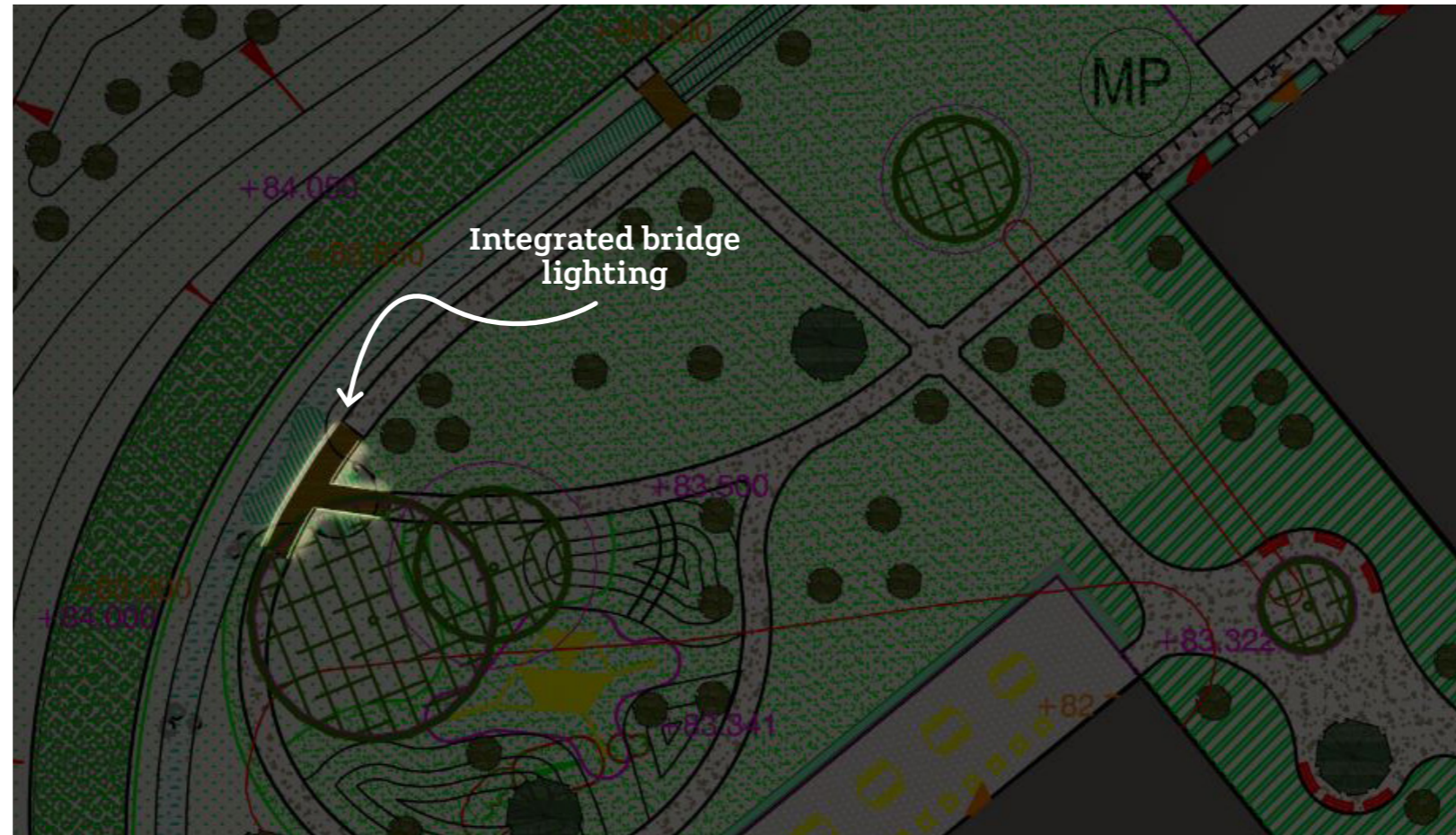
**FEC Open Area.**

**Bridge lighting**

To create added interest when navigating the landscape after dark it is proposed a discrete lighting detail is integrated into the highlighted bridge.

Lighting could be recessed into the underside of the bridge to spill a subtle glow of light below. Developing a concealment detail within the structure will ensure the light will not impact on the space during daylight hours.

It is proposed that the second bridge leading north will not be illuminated, to ensure circulation away from the resort is not encouraged after dark.



Plan Overview.



This plan is a graphical representation only, providing indicative luminaire locations and quantities. This does not represent specific illumination levels.



**BEN ACTON**  
PRINCIPAL LIGHTING DESIGNER

01865 670 310  
BENACTON@HOARELEA.COM

HOARELEA.COM

Old Iron Works  
35A Great Clarendon Street  
Oxford  
OX2 6AT

