

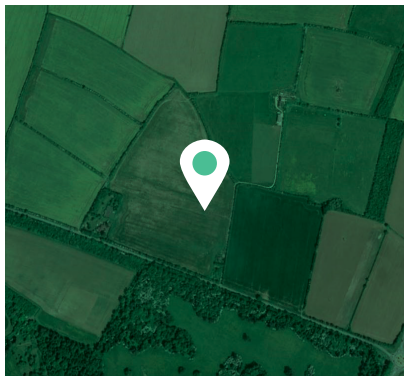


COUNTRYSIDE

Places People Love

# The economic benefits of Himley, Bicester

The proposed development at Himley, Bicester will contribute towards the District's housing and affordable housing provision, stimulate economic growth and add to local authority revenues.



## The proposal



**500** New homes

**150** Affordable homes

**43%** Affordable homes

## Construction benefits



**£61.3m**

Construction value (total construction cost)



**£38.4m GVA**

Economic output (additional GVA p.a.)



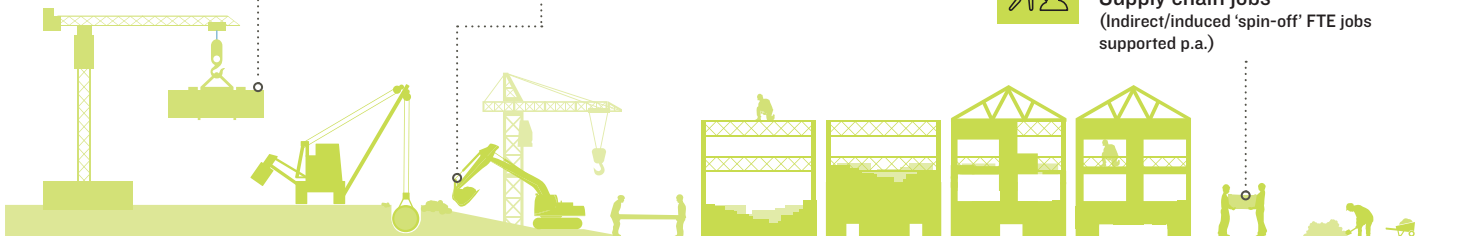
**204 Jobs**

Construction jobs (Direct FTE construction jobs p.a. over the 5 year build period)



**277 Jobs**

Supply chain jobs (Indirect/induced 'spin-off' FTE jobs supported p.a.)



## Operational and expenditure benefits



**£2.8m**

First occupation expenditure (spending to make a house 'feel like a home')



**52 Supported jobs**

(from increased expenditure in local area)



**£4.8m**

Resident expenditure (within local shops and services p.a.)

## Local Authority revenue benefits



**£17.5m**

Planning contributions (S106 or CIL)



**£940,000**

Council Tax revenues (p.a.)



LICHFIELDS