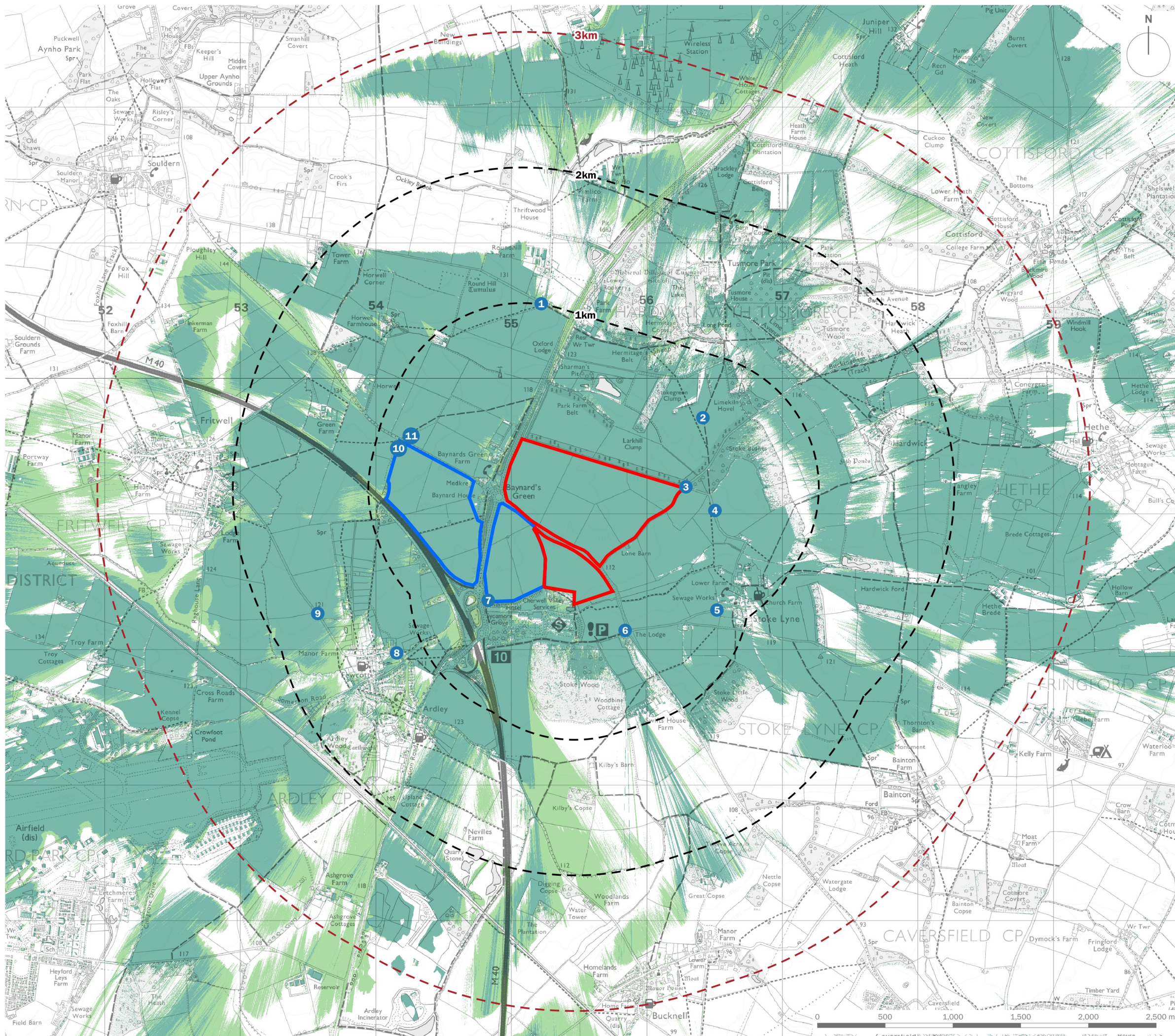




Appendix 13.9

CUMULATIVE ZTV PLAN



- Site Boundary
- Range Rings (at 1km intervals)
- 3km Detailed Study Area
- 1 Photoviewpoint Location
- Wireline View
- Tritax Zone of Theoretical Visibility
- Cumulative Zone of Theoretical Visibility

DRAFT

NOTE

Zone of Theoretical Visibility (ZTV) was calculated using a spatial modelling algorithm which considers the following parameters:

- 1.6m Receptor Elevation (Observer Height)
- An illustrative 23m Proposed Development Locations (Ridge Height)
- 360 Degree Field of View
- LiDAR 1m Digital Surface Model (DSM) (vertical accuracy of +/- 5cm)

client	Tritax Symmetry Ardley Ltd	
project title	Symmetry Park, Ardley	
drawing title	Zone of Theoretical Visibility	
date	02 FEBRUARY 2024	drawn by BC
drawing number	edp2355_d057	checked
scale	1:27,500 @ A3	QA



Registered office: 01285 740427 - www.edp-uk.co.uk - info@edp-uk.co.uk