
VOLUME 2
FIGURES 7.65 - 7.77
LVIA FIGURES - VVMS

FEBRUARY 2024

ISSUE SHEET

JOB NAME: OXFORD UNITED FC NEW STADIUM
JOB NUMBER: D3263
CLIENT: OXFORD UNITED FC

REVISION	DATE	REVISION DETAILS	PREPARED BY	CHECKED BY	APPROVED BY
1	08.12.2023	ISSUE	CK	SR	AS
2	21.02.2024	ISSUE V2	CK	SR	AS

CONTENTS: VOLUME 2: LVIA FIGURES - VVMS

VOLUME 2
fabrik LVIA Figures 7.65 - 7.77

4

PROJECT NUMBER: D3263
VERSION: 2
VERSION DATE: FEBRUARY 2024
COMMENT: ISSUE V2

1.0 VVMS

LEGEND

- SITE BOUNDARY
- PROW - FOOTPATH
- PERMISSIVE FOOTPATH
- 1 VVM VIEWPOINT LOCATION

REPRODUCED FROM ORDNANCE SURVEY DIGITAL MAP DATA © CROWN COPYRIGHT 2022. ALL RIGHTS RESERVED. LICENCE NUMBER 100022432.

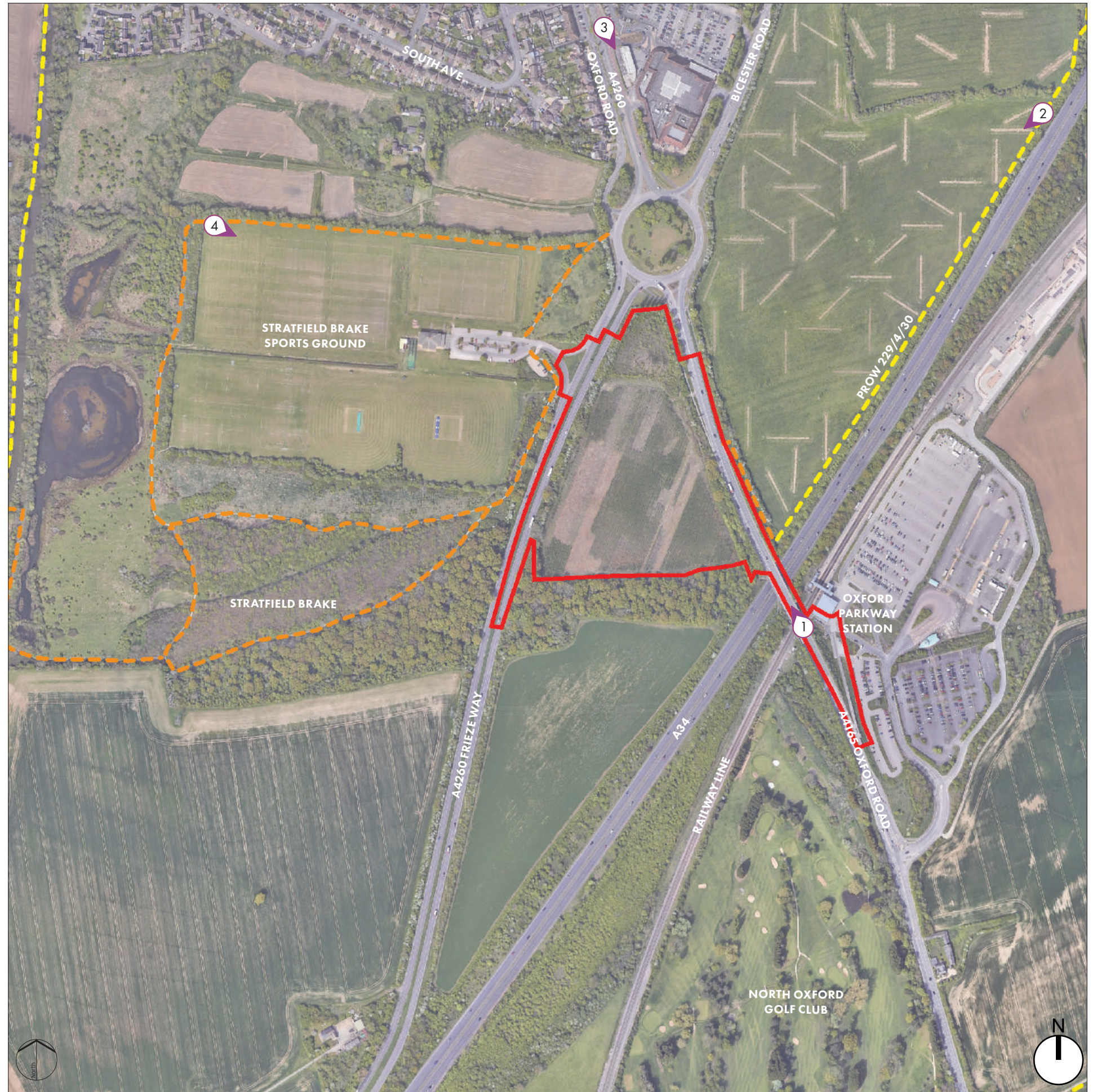


FIGURE 7.65 – VVM PHOTOGRAPH LOCATION PLAN (FABRIK, 2023)

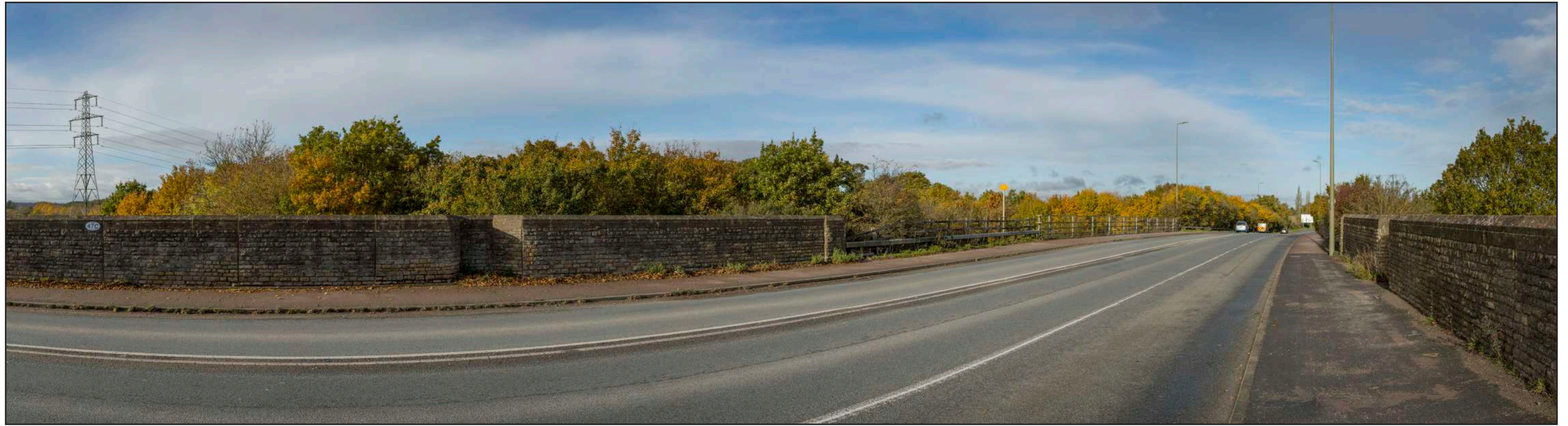


FIGURE 7.66 VVM VIEW 1: BASELINE PHOTO
 VIEW FROM OXFORD ROAD AS IT CROSSES THE BRIDGE OVER THE RAILWAY LINE WITHIN THE SITE, LOOKING NORTH TOWARDS THE CENTRAL FIELD WITHIN THE SITE.

LEGEND

- SITE BOUNDARY
- ① LOCATION OF VVM VIEWPOINT



VIEWPOINT LOCATION PLAN



FIGURE 7.67 VVM VIEW 1: PROPOSED DEVELOPMENT AT YEAR 1
 VIEW FROM OXFORD ROAD AS IT CROSSES THE BRIDGE OVER THE RAILWAY LINE WITHIN THE SITE, LOOKING NORTH TOWARDS THE CENTRAL FIELD WITHIN THE SITE WITH THE YEAR 1 PROPOSED DEVELOPMENT VISIBLE AGAINST THE SKYLINE ABOVE THE TREE LINE.

LEGEND

- SITE BOUNDARY
- ① LOCATION OF VVM VIEWPOINT



VIEWPOINT LOCATION PLAN



FIGURE 7.68 VVM VIEW 1: PROPOSED DEVELOPMENT AT YEAR 15

VIEW FROM OXFORD ROAD AS IT CROSSES THE BRIDGE OVER THE RAILWAY LINE WITHIN THE SITE, LOOKING NORTH TOWARDS THE CENTRAL FIELD WITHIN THE SITE WITH THE YEAR 15 PROPOSED DEVELOPMENT VISIBLE AGAINST THE SKYLINE ABOVE THE TREE LINE.

LEGEND

- SITE BOUNDARY
- ① LOCATION OF VVM VIEWPOINT





VIEWPOINT LOCATION PLAN



FIGURE 7.69 VVM VIEW 2: BASELINE PHOTO
 VIEW FROM PROW 229/4/30 TO THE EAST OF THE SITE WITHIN THE PR7A RESIDENTIAL ALLOCATION SITE, LOOKING WEST TOWARDS THE SITE.

LEGEND

-  SITE BOUNDARY
-  LOCATION OF VVM VIEWPOINT





VIEWPOINT LOCATION PLAN



FIGURE 7.70 VVM VIEW 2: PROPOSED DEVELOPMENT AT YEAR 1
 VIEW FROM PROW 229/4/30 TO THE EAST OF THE SITE WITHIN THE PR7A RESIDENTIAL ALLOCATION SITE, LOOKING WEST TOWARDS THE SITE WITH THE YEAR 1 PROPOSED DEVELOPMENT VISIBLE AGAINST THE SKYLINE ABOVE THE TREE LINE.

LEGEND

-  SITE BOUNDARY
-  LOCATION OF VVM VIEWPOINT





VIEWPOINT LOCATION PLAN



FIGURE 7.71 VVM VIEW 2: PROPOSED DEVELOPMENT AT YEAR 15

VIEW FROM PROW 229/4/30 TO THE EAST OF THE SITE WITHIN THE PR7A RESIDENTIAL ALLOCATION SITE, LOOKING WEST TOWARDS THE SITE WITH THE YEAR 15 PROPOSED DEVELOPMENT VISIBLE AGAINST THE SKYLINE ABOVE THE TREE LINE.

LEGEND

-  SITE BOUNDARY
-  LOCATION OF VVM VIEWPOINT



VIEWPOINT LOCATION PLAN



FIGURE 7.72 VVM VIEW 3: BASELINE PHOTO
 VIEW FROM OXFORD ROAD TO THE NORTH OF THE SITE ADJACENT TO THE SAINSBURY'S SUPERSTORE CAR PARK.

LEGEND

- SITE BOUNDARY
- ③ LOCATION OF VVM VIEWPOINT



VIEWPOINT LOCATION PLAN



FIGURE 7.73 VVM VIEW 3: PROPOSED DEVELOPMENT AT YEAR 1
 VIEW FROM OXFORD ROAD TO THE NORTH OF THE SITE ADJACENT TO THE SAINSBURY'S SUPERSTORE CAR PARK WITH THE YEAR 1 PROPOSED DEVELOPMENT PARTIALLY VISIBLE WHERE GAPS IN THE EXISTING VEGETATION ON KIDLINGTON ROUNDABOUT ALLOW. THE EXISTING CHARACTER OF THE SKYLINE IS RETAINED.

LEGEND

- SITE BOUNDARY
- ③ LOCATION OF VVM VIEWPOINT



VIEWPOINT LOCATION PLAN



FIGURE 7.74 VVM VIEW 3: PROPOSED DEVELOPMENT AT YEAR 15
 VIEW FROM OXFORD ROAD TO THE NORTH OF THE SITE ADJACENT TO THE SAINSBURY'S SUPERSTORE CAR PARK WITH THE YEAR 15 PROPOSED DEVELOPMENT PARTIALLY VISIBLE WHERE GAPS IN THE EXISTING VEGETATION ON KIDLINGTON ROUNDABOUT ALLOW. THE EXISTING CHARACTER OF THE SKYLINE IS RETAINED.

LEGEND

- SITE BOUNDARY
- ③ LOCATION OF VVM VIEWPOINT



VIEWPOINT LOCATION PLAN



FIGURE 7.75 VVM VIEW 4: BASELINE PHOTO
 VIEW FROM THE NORTHERN HALF OF STRATFIELD BRAKE SPORTS GROUND WHERE THE RUGBY PITCHES ARE LOCATED, LOOKING EAST TOWARDS THE SITE.

LEGEND

- SITE BOUNDARY
- 4 LOCATION OF VVM VIEWPOINT



VIEWPOINT LOCATION PLAN



FIGURE 7.76 VVM VIEW 4: PROPOSED DEVELOPMENT AT YEAR 1

VIEW FROM THE NORTHERN HALF OF STRATFIELD BRAKE SPORTS GROUND WHERE THE RUGBY PITCHES ARE LOCATED, LOOKING EAST TOWARDS THE SITE WITH THE YEAR 1 PROPOSED DEVELOPMENT VISIBLE AGAINST THE SKYLINE ABOVE THE TREE LINE.

LEGEND

- SITE BOUNDARY
- 4 LOCATION OF VVM VIEWPOINT



VIEWPOINT LOCATION PLAN



FIGURE FIGURE 7.77 VVM VIEW 4: PROPOSED DEVELOPMENT AT YEAR 15
 VIEW FROM THE NORTHERN HALF OF STRATFIELD BRAKE SPORTS GROUND WHERE THE RUGBY PITCHES ARE LOCATED, LOOKING EAST TOWARDS THE SITE WITH THE YEAR 15 PROPOSED DEVELOPMENT VISIBLE AGAINST THE SKYLINE ABOVE THE TREE LINE.

LEGEND

- SITE BOUNDARY
- 4 LOCATION OF VVM VIEWPOINT



VIEWPOINT LOCATION PLAN

LENTEN HOUSE
16 LENTEN STREET
ALTON
HAMPSHIRE
GU34 1HG

THE OLD SCHOOL
4 EXTON STREET
WATERLOO
LONDON
SE1 8UE

FABRIKUK.COM

fabrik