



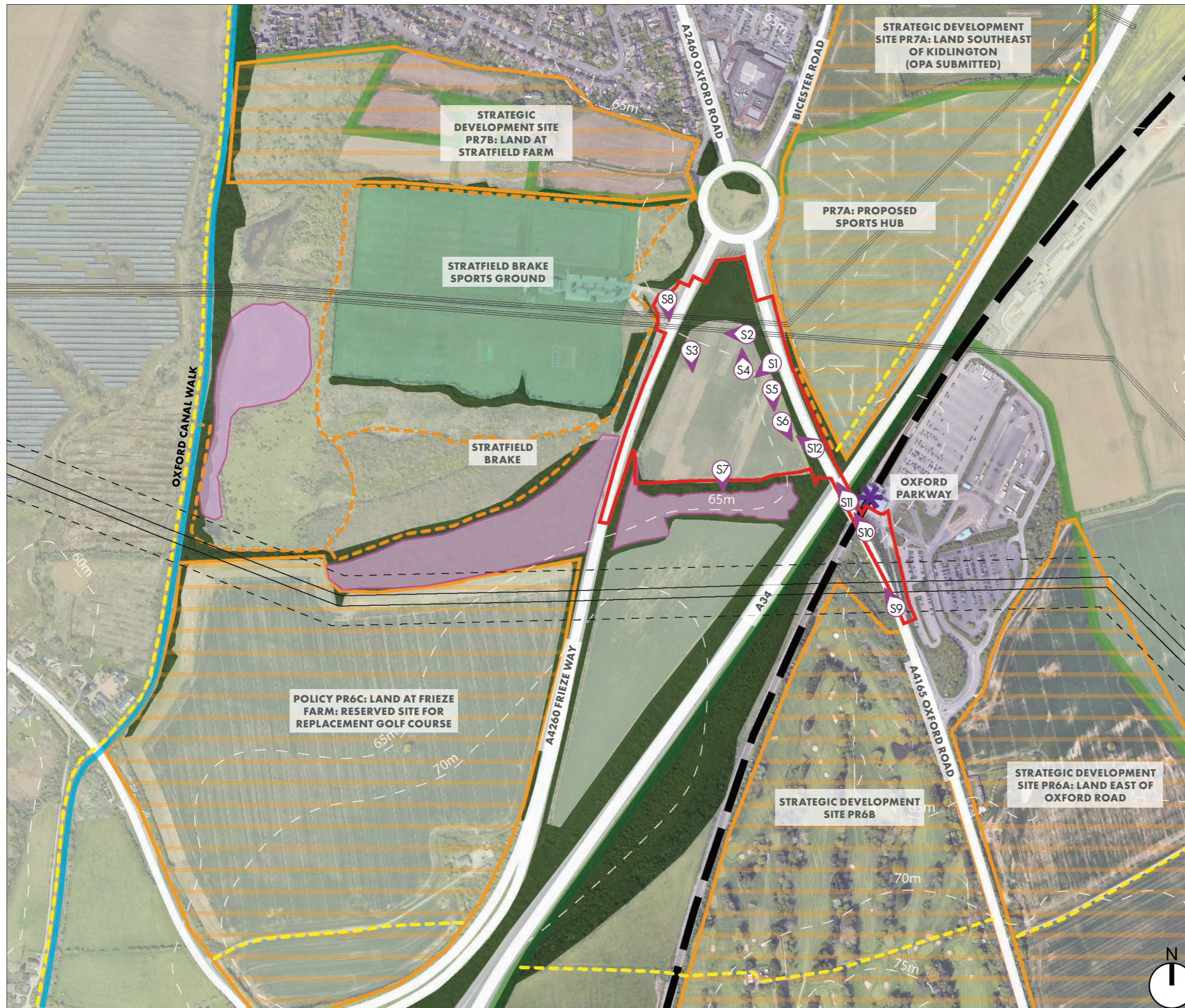
REPRODUCED FROM ORDNANCE SURVEY DIGITAL MAP DATA © CROWN COPYRIGHT 2023 - ALL RIGHTS RESERVED. LICENCE NUMBER 100022432

**LEGEND**

- APPLICATION SITE BOUNDARY
- FOOTPATH
- BRIDLEWAY
- THAMES PATH NATIONAL TRAIL
- OXFORD GREEN BELT WAY- LDW
- SHAKESPEARE'S WAY - LDW
- OXFORD CANAL WALK - LDW
- COUNTRYSIDE AND RIGHTS OF WAY ACT 2000 - ACCESS LAND
- REGISTERED COMMON LAND

FIGURE 7.6 PUBLIC RIGHTS OF WAY WITHIN THE STUDY AREA (FABRIK, 2023)





REPRODUCED FROM ORDNANCE SURVEY DIGITAL MAP DATA © CROWN COPYRIGHT 2023. ALL RIGHTS RESERVED. LICENCE NUMBER 100022432

- LEGEND**
- SITE BOUNDARY
  - EXISTING STRATFIELD BRAKE SPORTS GROUND
  - EXISTING GREEN BELT
  - EXISTING VEGETATION
  - STRATFIELD BRAKE NERC ACT S41 HABITAT
  - STRATEGIC SITE ALLOCATIONS
  - ✳ RAILWAY STATION
  - RAILWAY LINE
  - PROW- FOOTPATH
  - PERMISSIVE FOOTPATH
  - OXFORD CANAL
  - ROADS
  - 65m CONTOURS
  - 230KV OVERHEAD TRANSMISSION LINES
  - 420KV OVERHEAD TRANSMISSION LINES + EASEMENT
  - PROPOSED PR7A ALLOCATION PLAN
  - EXISTING OAK TREES
  - S1 REPRESENTATIVE VIEWPOINT LOCATION

FIGURE 7.7 SITE FEATURES PLAN (FABRIK, 2023)





PHOTOGRAPH S1 - VIEW OF THE CENTRAL PART OF THE SITE FROM THE EXISTING FIELD ENTRANCE ON THE EASTERN BOUNDARY, LOOKING WEST. THERE ARE GLIMPSED VIEWS OF THE SOUTHERN AND WESTERN SITE BOUNDARY VEGETATION ABOVE THE WILLOW PLANTATION.



PHOTOGRAPH S2 - VIEW FROM THE NORTH EASTERN PART OF THE SITE, LOOKING WEST ALONG THE LINE OF THE OVERHEAD CABLES.



PHOTOGRAPH S3 - VIEW LOOKING SOUTH ALONG THE WESTERN BOUNDARY OF THE SITE. THE BOUNDARY VEGETATION SCREENS VIEWS OF FRIEZE WAY.



PHOTOGRAPH S4 - VIEW FROM THE CENTRAL PART OF THE SITE, LOOKING NORTH TOWARDS KIDLINGTON. THE OVERHEAD CABLES AND POPLARS ON THE NORTHERN BOUNDARY ARE VISIBLE.



PHOTOGRAPH S5 - VIEW FROM THE CENTRAL, WESTERN PART OF THE SITE, LOOKING SOUTH. THE WESTERN AND SOUTHERN BOUNDARY VEGETATION ENCLOSE THE SITE. FIGURE 7.8 SITE PHOTOGRAPHS S1 - S7 (FABRIK, 2023)



PHOTOGRAPH S6: VIEW FROM THE SOUTH WESTERN PART OF THE SITE, LOOKING SOUTH. THE WESTERN AND SOUTHERN BOUNDARY VEGETATION ENCLOSE THE SITE.



PHOTOGRAPH S7: VIEW FROM THE CENTRAL SOUTHERN PART OF THE SITE, LOOKING SOUTH INTO THE WOODLAND BLOCK ALONG THE SOUTHERN EDGE OF THE SITE.



**PHOTOGRAPH S8**  
 VIEW FROM THE ENTRANCE TO STRATFIELD BRAKE SPORTS GROUND ADJACENT TO FRIEZE WAY ON THE WESTERN BOUNDARY OF THE SITE, LOOKING EAST ACROSS THE SITE. THERE ARE OPEN VIEWS OF THE SECTION OF FRIEZE WAY WITHIN THE SITE. THE VEGETATION ALONG THE FIELD BOUNDARY FORESHORTENS VIEWS OF THE INTERNAL ARRANGEMENTS OF THE FIELD WITHIN THE SITE. THE OVERHEAD POWER LINES WITHIN THE SITE ARE VISIBLE OPPOSITE THE SPORTS GROUND ENTRANCE.



**PHOTOGRAPH S9**  
 VIEW FROM OXFORD ROAD WITHIN THE SITE, LOOKING NORTH ACROSS THE SITE. THERE ARE PARTIAL VIEWS OF TOPS OF THE SOUTHERN AND EASTERN FIELD BOUNDARY VEGETATION WITH TWO OF THE POPLARS ON THE NORTHERN SITE BOUNDARY ALSO PARTIALLY VISIBLE. VIEWS OF THE INTERNAL ARRANGEMENTS OF THE SITE ARE LIMITED TO THE EXISTING ROAD CORRIDOR AND RAMPED ACCESS TO OXFORD PARKWAY STATION DUE TO THE EXISTING ROADSIDE VEGETATION. THE CHARACTER OF THE VIEW IS OF A ROAD CORRIDOR CROSSING A BRIDGE WITH ASSOCIATED VEGETATION.



**PHOTOGRAPH S10**  
 VIEW FROM OXFORD ROAD AS IT CROSSES THE BRIDGE OVER THE RAILWAY LINE WITHIN THE SITE, LOOKING NORTH TOWARDS THE CENTRAL FIELD WITHIN THE SITE. THERE ARE PARTIAL VIEWS OF TOPS OF THE SOUTHERN SITE BOUNDARY VEGETATION WITH TWO OF THE POPLARS ON THE NORTHERN SITE BOUNDARY ALSO PARTIALLY VISIBLE. VIEWS OF THE INTERNAL ARRANGEMENTS OF THE FIELD ARE TRUNCATED BY THE INTERVENING TOPOGRAPHY AND VEGETATION. THE CHARACTER OF THE VIEW IS OF A ROAD CORRIDOR CROSSING A BRIDGE WITH ASSOCIATED VEGETATION.

**FIGURE 7.9 SITE PHOTOGRAPHS S8 - S10 (FABRIK, 2023)**



**PHOTOGRAPH S11**

VIEW FROM OXFORD ROAD AS IT CROSSES THE BRIDGE OVER THE A34 WITHIN THE SITE, LOOKING NORTH TOWARDS THE FIELD WITHIN THE SITE. THERE ARE OPEN VIEWS OF THE EASTERN SITE BOUNDARY VEGETATION AND THE TOPS OF THE TREES WITHIN THE WOODLAND TO THE SOUTH OF THE SITE. VIEWS OF THE INTERNAL ARRANGEMENTS OF THE FIELD ARE TRUNCATED BY THE INTERVENING TOPOGRAPHY AND VEGETATION. THE CHARACTER OF THE VIEW IS OF A ROAD CORRIDOR CROSSING A BRIDGE WITH ASSOCIATED VEGETATION.



**PHOTOGRAPH S12**

VIEW FROM OXFORD ROAD WITHIN THE SITE, LOOKING NORTH ALONG THE EASTERN BOUNDARY TOWARDS KIDLINGTON ROUNDABOUT. THERE ARE OPEN VIEWS OF THE EASTERN PART OF THE SITE THAT ENCOMPASSES OXFORD ROAD. THE FIELD BOUNDARY VEGETATION TRUNCATES VIEWS OF THE INTERNAL ARRANGEMENTS OF THE FIELD WITHIN THE SITE. THE CHARACTER OF THE VIEW IS OF A ROAD CORRIDOR WITH ASSOCIATED VEGETATION.

FIGURE 7.10 SITE PHOTOGRAPHS S11 - S12 (FABRIK, 2023)



LEGEND

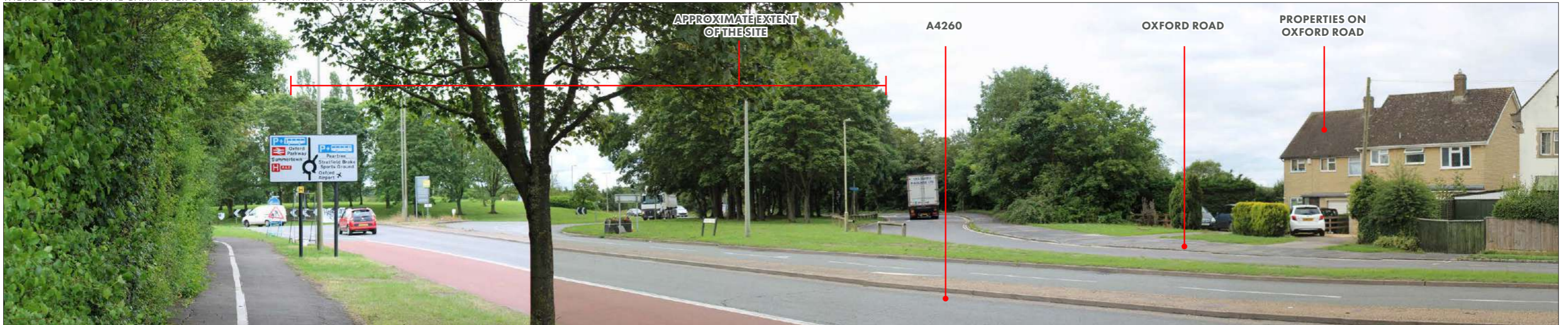
- APPLICATION SITE BOUNDARY
- PROW- FOOTPATH
- PERMISSIVE FOOTPATH
- 21 LOCATION OF PHOTOGRAPHIC VIEWPOINT - OPEN VIEW (AN OPEN VIEW OF THE WHOLE OF THE SITE OR OPEN VIEW OF PART OF THE SITE).
- 21 LOCATION OF PHOTOGRAPHIC VIEWPOINT - PARTIAL VIEW (A VIEW OF THE SITE WHICH FORMS A SMALL PART OF THE WIDER PANORAMA, OR WHERE VIEWS ARE FILTERED BETWEEN INTERVENING BUILT FORM OR VEGETATION).
- 21 LOCATION OF PHOTOGRAPHIC VIEWPOINT - TRUNCATED VIEW (VIEWS OF THE SITE ARE OBSCURED BY THE INTERVENING BUILT FORM AND / OR VEGETATION, OR IS DIFFICULT TO PERCEIVE).

FIGURE 7.11 LOCAL VIEWPOINTS LOCATION PLAN (FABRIK, 2023)

1KM



**PHOTOGRAPH – VIEWPOINT 1** VALUE: LOW  
 VIEW FROM OXFORD ROAD AT THE JUNCTION WITH KIDLINGTON ROUNDABOUT TO THE NORTH OF THE SITE, LOOKING SOUTH TOWARDS THE SITE. THE LINE OF FIVE POPLARS ON THE NORTHERN SITE BOUNDARY ARE VISIBLE BEYOND THE ROUNDABOUT. THE CHARACTER OF THE VIEW IS OF A TRANSPORT CORRIDOR WITH TREE PLANTING.



**PHOTOGRAPH – VIEWPOINT 2** VALUE ROAD USERS: LOW / RESIDENTS: HIGH  
 VIEW FROM THE A4260 ON APPROACH TO KIDLINGTON ROUNDABOUT TO THE NORTH OF THE SITE, LOOKING SOUTH TOWARDS THE SITE. THERE ARE OPEN VIEWS OF PART OF THE NORTHERN SITE BOUNDARY VEGETATION, INCLUDING THE LINE OF FIVE POPLARS ON THE NORTHERN SITE BOUNDARY, WHICH ARE PARTIALLY VISIBLE BEYOND THE ROUNDABOUT VEGETATION. THE CHARACTER OF THE VIEW IS OF A TRANSPORT CORRIDOR WITH TREE PLANTING.

**LEGEND**

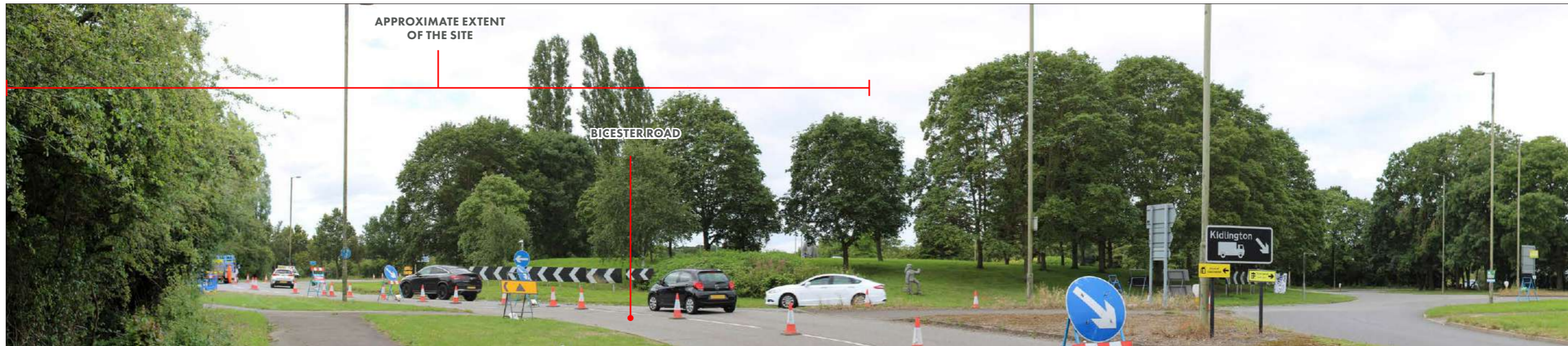
- SITE BOUNDARY
- ① LOCATION OF PHOTOGRAPHIC VIEWPOINT – OPEN VIEW (AN OPEN VIEW OF THE WHOLE OF THE SITE OR OPEN VIEW OF PART OF THE SITE).
- ② LOCATION OF PHOTOGRAPHIC VIEWPOINT – PARTIAL VIEW (A VIEW OF THE SITE WHICH FORMS A SMALL PART OF THE WIDER PANORAMA, OR WHERE VIEWS ARE FILTERED BETWEEN INTERVENING BUILT FORM OR VEGETATION).
- ③ LOCATION OF PHOTOGRAPHIC VIEWPOINT – TRUNCATED VIEW (VIEWS OF THE SITE ARE OBSCURED BY THE INTERVENING BUILT FORM AND / OR VEGETATION, OR IS DIFFICULT TO PERCEIVE).



FIGURE 7.12 LOCAL VIEWPOINTS 1-2 (FABRIK, 2023)



**PHOTOGRAPH – VIEWPOINT 3** VALUE: LOW  
 VIEW FROM KIDLINGTON ROUNDABOUT AT THE JUNCTION WITH THE A4260, LOOKING SOUTH TOWARDS THE SITE. THE SITE IS PARTIALLY VISIBLE BEYOND THE ROUNDABOUT VEGETATION. THE CHARACTER OF THE VIEW IS OF A ROAD CORRIDOR WITH ASSOCIATED VEGETATION.



**PHOTOGRAPH – VIEWPOINT 4** VALUE: LOW  
 VIEW FROM BICESTER ROAD ON APPROACH TO KIDLINGTON ROUNDABOUT, LOOKING SOUTH WEST TOWARDS THE SITE. THE SITE IS PARTIALLY VISIBLE BEYOND THE ROUNDABOUT VEGETATION WITH THE POPLARS ON THE NORTHERN BOUNDARY PROMINENT. THE CHARACTER OF THE VIEW IS OF A ROAD CORRIDOR WITH ASSOCIATED VEGETATION.

**LEGEND**

- SITE BOUNDARY
- ① LOCATION OF PHOTOGRAPHIC VIEWPOINT – OPEN VIEW (AN OPEN VIEW OF THE WHOLE OF THE SITE OR OPEN VIEW OF PART OF THE SITE).
- ② LOCATION OF PHOTOGRAPHIC VIEWPOINT – PARTIAL VIEW (A VIEW OF THE SITE WHICH FORMS A SMALL PART OF THE WIDER PANORAMA, OR WHERE VIEWS ARE FILTERED BETWEEN INTERVENING BUILT FORM OR VEGETATION).
- ③ LOCATION OF PHOTOGRAPHIC VIEWPOINT – TRUNCATED VIEW (VIEWS OF THE SITE ARE OBSCURED BY THE INTERVENING BUILT FORM AND / OR VEGETATION, OR IS DIFFICULT TO PERCEIVE).



KEY PLAN

FIGURE 7.13 LOCAL VIEWPOINTS 3-4 (FABRIK, 2023)





**PHOTOGRAPH – VIEWPOINT 5** VALUE: LOW  
 VIEW FROM BICESTER ROAD, LOOKING SOUTH WEST TOWARDS THE SITE. THE SITE IS PARTIALLY VISIBLE BEYOND THE ROUNDABOUT VEGETATION WITH THE POPLARS ON THE NORTHERN BOUNDARY PROMINENT. THE CHARACTER OF THE VIEW IS OF A ROAD CORRIDOR WITH ASSOCIATED VEGETATION.



**PHOTOGRAPH – VIEWPOINT 6** VALUE: LOW  
 VIEW FROM KIDLINGTON ROUNDABOUT, LOOKING SOUTH TOWARDS THE SITE. THERE ARE OPEN VIEWS OF THE NORTHERN SITE BOUNDARY VEGETATION WITH THE POPLARS ON THE NORTHERN BOUNDARY PROMINENT. THE CHARACTER OF THE VIEW IS OF A ROAD CORRIDOR WITH ASSOCIATED VEGETATION.

**LEGEND**

- SITE BOUNDARY
- ① LOCATION OF PHOTOGRAPHIC VIEWPOINT – OPEN VIEW (AN OPEN VIEW OF THE WHOLE OF THE SITE OR OPEN VIEW OF PART OF THE SITE).
- ② LOCATION OF PHOTOGRAPHIC VIEWPOINT – PARTIAL VIEW (A VIEW OF THE SITE WHICH FORMS A SMALL PART OF THE WIDER PANORAMA, OR WHERE VIEWS ARE FILTERED BETWEEN INTERVENING BUILT FORM OR VEGETATION).
- ③ LOCATION OF PHOTOGRAPHIC VIEWPOINT – TRUNCATED VIEW (VIEWS OF THE SITE ARE OBSCURED BY THE INTERVENING BUILT FORM AND / OR VEGETATION, OR IS DIFFICULT TO PERCEIVE).



**KEY PLAN**

**FIGURE 7.14 LOCAL VIEWPOINTS 5-6 (FABRIK, 2023)**



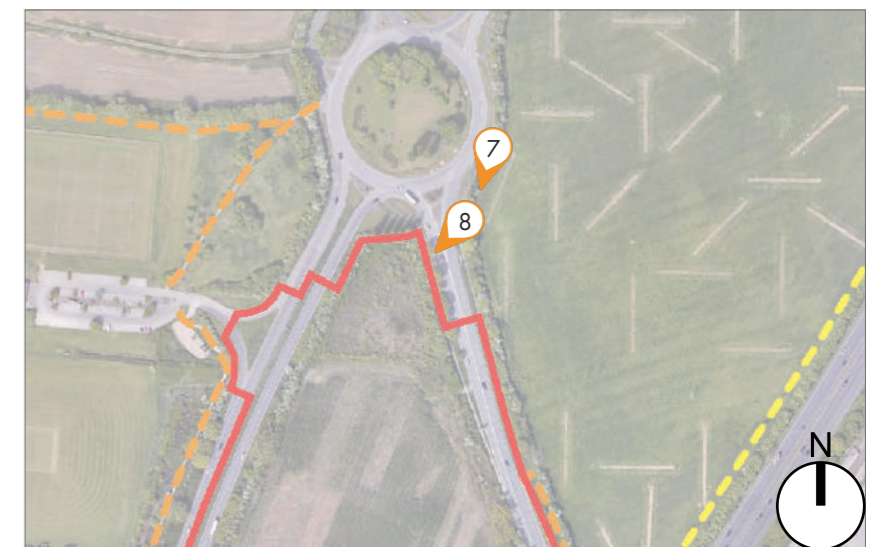
**PHOTOGRAPH – VIEWPOINT 7** **VALUE: LOW**  
 VIEW FROM KIDLINGTON ROUNDABOUT, LOOKING SOUTH TOWARDS THE SITE. THERE ARE OPEN VIEWS OF THE NORTHERN SITE BOUNDARY VEGETATION WITH THE POPLARS ON THE NORTHERN BOUNDARY PROMINENT. THE CHARACTER OF THE VIEW IS OF A ROAD CORRIDOR WITH ASSOCIATED VEGETATION.



**PHOTOGRAPH – VIEWPOINT 8** **VALUE: LOW**  
 VIEW FROM THE OXFORD ROAD/KIDLINGTON ROUNDABOUT JUNCTION ADJACENT TO THE NORTHERN BOUNDARY OF THE SITE, LOOKING SOUTH WEST TOWARDS THE SITE. THERE ARE OPEN VIEWS OF THE NORTHERN AND EASTERN SITE BOUNDARY VEGETATION WITH THE TOPS OF THE TREES WITHIN THE WOODLAND IN THE SOUTH OF THE SITE VISIBLE BEYOND. VIEWS OF THE INTERNAL ARRANGEMENTS OF THE SITE ARE TRUNCATED BY THE BOUNDARY VEGETATION. THE CHARACTER OF THE VIEW IS OF A ROAD CORRIDOR WITH ASSOCIATED VEGETATION.

**LEGEND**

- **SITE BOUNDARY**
- ① **LOCATION OF PHOTOGRAPHIC VIEWPOINT – OPEN VIEW (AN OPEN VIEW OF THE WHOLE OF THE SITE OR OPEN VIEW OF PART OF THE SITE).**
- ② **LOCATION OF PHOTOGRAPHIC VIEWPOINT – PARTIAL VIEW (A VIEW OF THE SITE WHICH FORMS A SMALL PART OF THE WIDER PANORAMA, OR WHERE VIEWS ARE FILTERED BETWEEN INTERVENING BUILT FORM OR VEGETATION).**
- ③ **LOCATION OF PHOTOGRAPHIC VIEWPOINT – TRUNCATED VIEW (VIEWS OF THE SITE ARE OBSCURED BY THE INTERVENING BUILT FORM AND / OR VEGETATION, OR IS DIFFICULT TO PERCEIVE).**

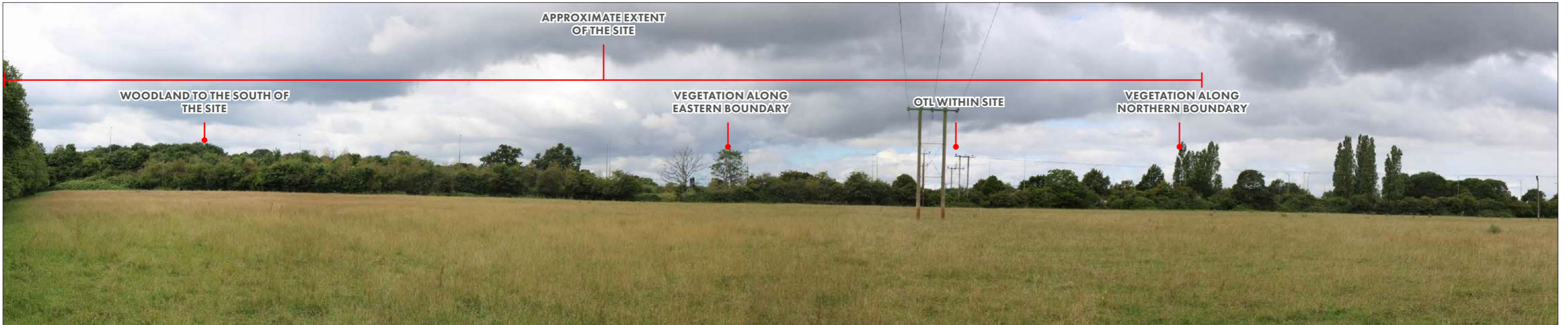


**KEY PLAN**

**FIGURE 7.15 LOCAL VIEWPOINTS 7-8 (FABRIK, 2023)**



**PHOTOGRAPH – VIEWPOINT 9** VALUE: LOW  
 VIEW FROM OXFORD ROAD ADJACENT TO THE EASTERN BOUNDARY OF THE SITE, LOOKING SOUTH WEST TOWARDS THE SITE. THERE ARE OPEN VIEWS OF OXFORD ROAD WITHIN THE SITE AND THE EASTERN FIELD BOUNDARY VEGETATION WITH THE TOPS OF THE TREES WITHIN THE WOODLAND TO THE SOUTH OF THE SITE VISIBLE BEYOND. VIEWS OF THE INTERNAL ARRANGEMENTS OF THE FIELD ARE TRUNCATED BY THE BOUNDARY VEGETATION. THE CHARACTER OF THE VIEW IS OF A ROAD CORRIDOR WITH ASSOCIATED VEGETATION.



**PHOTOGRAPH – VIEWPOINT 10** VALUE: HIGH  
 VIEW FROM PROW 229/4/30 TO THE EAST OF THE SITE WITHIN THE PR7A RESIDENTIAL ALLOCATION SITE, LOOKING WEST TOWARDS THE SITE. THERE ARE OPEN VIEWS OF PARTS OF THE EASTERN SITE BOUNDARY VEGETATION, THE TOPS OF THE TREES ON THE NORTHERN AND SOUTHERN BOUNDARIES AND THE OVERHEAD TRANSMISSION LINES WITHIN THE SITE FROM THIS LOCATION. A GLIMPSED VIEW OF THE INTERNAL ARRANGEMENTS OF THE SITE IS POSSIBLE THROUGH AN EXISTING FIELD ENTRANCE IN THE CENTRE OF THE VIEW. THE CHARACTER OF THE VIEW IS OF OPEN PASTURE WITH MATURE FIELD BOUNDARY VEGETATION AND TREES.

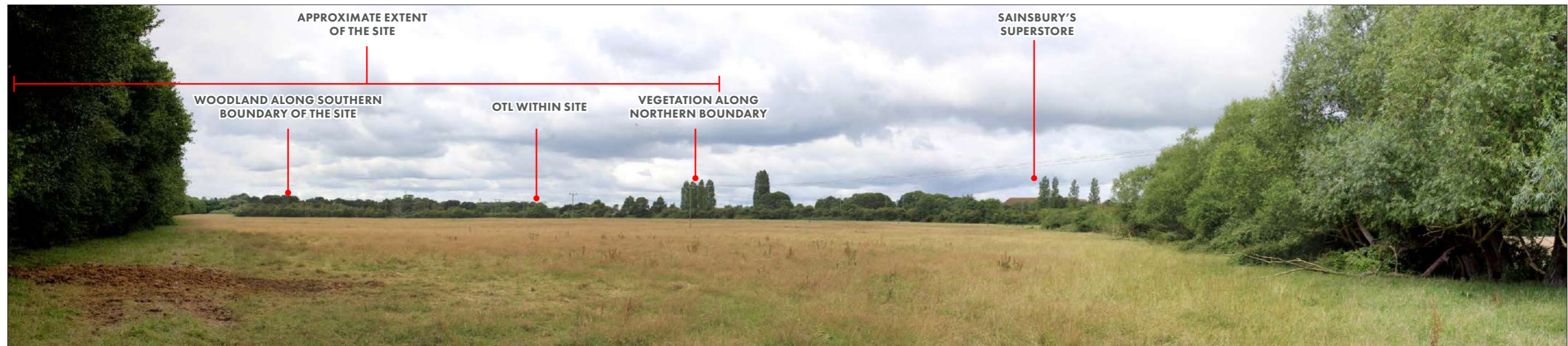
**LEGEND**

- SITE BOUNDARY
- ① LOCATION OF PHOTOGRAPHIC VIEWPOINT – OPEN VIEW (AN OPEN VIEW OF THE WHOLE OF THE SITE OR OPEN VIEW OF PART OF THE SITE).
- ② LOCATION OF PHOTOGRAPHIC VIEWPOINT – PARTIAL VIEW (A VIEW OF THE SITE WHICH FORMS A SMALL PART OF THE WIDER PANORAMA, OR WHERE VIEWS ARE FILTERED BETWEEN INTERVENING BUILT FORM OR VEGETATION).
- ③ LOCATION OF PHOTOGRAPHIC VIEWPOINT – TRUNCATED VIEW (VIEWS OF THE SITE ARE OBSCURED BY THE INTERVENING BUILT FORM AND / OR VEGETATION, OR IS DIFFICULT TO PERCEIVE).



KEY PLAN

FIGURE 7.16 LOCAL VIEWPOINTS 9-10 (FABRIK, 2023)



**PHOTOGRAPH – VIEWPOINT 11** VALUE: HIGH  
 VIEW FROM PROW 229/4/30 TO THE EAST OF THE SITE WITHIN THE PR7A RESIDENTIAL ALLOCATION SITE, LOOKING WEST TOWARDS THE SITE. THERE ARE OPEN VIEWS OF PARTS OF THE EASTERN SITE BOUNDARY VEGETATION, THE TOPS OF THE TREES ON THE NORTHERN AND SOUTHERN BOUNDARIES AND THE OVERHEAD TRANSMISSION LINES WITHIN THE SITE FROM THIS LOCATION. THE CHARACTER OF THE VIEW IS OF OPEN PASTURE WITH MATURE FIELD BOUNDARY VEGETATION AND TREES. THE SAINSBURY'S SUPERSTORE ON THE SOUTHERN EDGE OF KIDLINGTON IS ALSO PARTIALLY VISIBLE.



**PHOTOGRAPH – VIEWPOINT 12** VALUE: LOW FOR ROAD USERS, HIGH FOR FOOTPATH USERS  
 VIEW FROM THE PERMISSIVE ROUTE THAT CONNECTS PROW 229/4/30 TO OXFORD ROAD, ADJACENT TO THE EASTERN SITE BOUNDARY, LOOKING WEST ACROSS THE SITE. THERE ARE OPEN VIEWS OF THE ROAD AND EASTERN FIELD BOUNDARY VEGETATION AND PARTS OF THE INTERNAL ARRANGEMENTS OF THE FIELD WHERE GAPS IN THE VEGETATION ALLOWS. THE CHARACTER OF THE VIEW IS OF A ROAD CORRIDOR WITH ASSOCIATE VEGETATION, SIGNAGE, LIGHTING AND OVERHEAD TRANSMISSION LINES.

**LEGEND**

- SITE BOUNDARY
- 📍 21 LOCATION OF PHOTOGRAPHIC VIEWPOINT – OPEN VIEW (AN OPEN VIEW OF THE WHOLE OF THE SITE OR OPEN VIEW OF PART OF THE SITE).
- 📍 21 LOCATION OF PHOTOGRAPHIC VIEWPOINT – PARTIAL VIEW (A VIEW OF THE SITE WHICH FORMS A SMALL PART OF THE WIDER PANORAMA, OR WHERE VIEWS ARE FILTERED BETWEEN INTERVENING BUILT FORM OR VEGETATION).
- 📍 21 LOCATION OF PHOTOGRAPHIC VIEWPOINT – TRUNCATED VIEW (VIEWS OF THE SITE ARE OBSCURED BY THE INTERVENING BUILT FORM AND / OR VEGETATION, OR IS DIFFICULT TO PERCEIVE).



KEY PLAN



KEY PLAN

FIGURE 7.17 LOCAL VIEWPOINTS 11-12 (FABRIK, 2023)



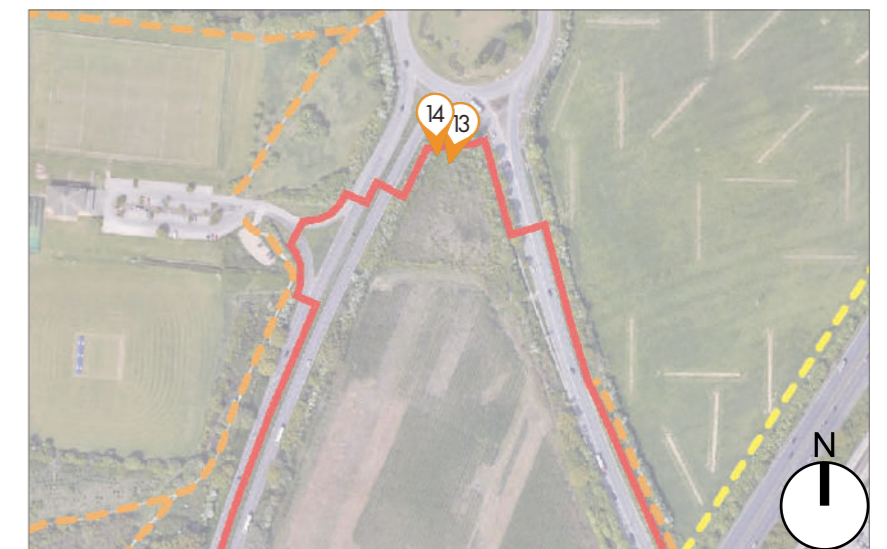
**PHOTOGRAPH – VIEWPOINT 13** VALUE: LOW  
 VIEW FROM KIDLINGTON ROUNDABOUT BETWEEN OXFORD ROAD AND FRIEZE WAY, ADJACENT TO THE NORTHERN BOUNDARY OF THE SITE, LOOKING SOUTH. THERE ARE OPEN VIEWS OF THE NORTHERN SITE BOUNDARY VEGETATION, WHICH TRUNCATE VIEWS OF THE INTERNAL ARRANGEMENTS OF THE SITE. THE CHARACTER OF THE VIEW IS OF A ROAD CORRIDOR WITH ASSOCIATED VEGETATION.



**PHOTOGRAPH – VIEWPOINT 14** VALUE: LOW  
 VIEW FROM THE CENTRAL RESERVATION OF FRIEZE WAY, LOOKING SOUTH TOWARDS THE SITE. THE POPLARS ON THE NORTHERN BOUNDARY ARE PROMINENT FEATURES. THERE ARE OPEN VIEWS OF THE NORTHERN AND WESTERN FIELD BOUNDARY VEGETATION, WHICH TRUNCATE VIEWS OF THE INTERNAL ARRANGEMENTS OF THE FIELD. THERE ARE OPEN VIEWS OF THE SECTION OF FRIEZE WAY WITHIN THE SITE. THE CHARACTER OF THE VIEW IS OF A ROAD CORRIDOR WITH ASSOCIATED VEGETATION.

**LEGEND**

- SITE BOUNDARY
- ① LOCATION OF PHOTOGRAPHIC VIEWPOINT – OPEN VIEW (AN OPEN VIEW OF THE WHOLE OF THE SITE OR OPEN VIEW OF PART OF THE SITE).
- ② LOCATION OF PHOTOGRAPHIC VIEWPOINT – PARTIAL VIEW (A VIEW OF THE SITE WHICH FORMS A SMALL PART OF THE WIDER PANORAMA, OR WHERE VIEWS ARE FILTERED BETWEEN INTERVENING BUILT FORM OR VEGETATION).
- ③ LOCATION OF PHOTOGRAPHIC VIEWPOINT – TRUNCATED VIEW (VIEWS OF THE SITE ARE OBSCURED BY THE INTERVENING BUILT FORM AND / OR VEGETATION, OR IS DIFFICULT TO PERCEIVE).



KEY PLAN

FIGURE 7.18 LOCAL VIEWPOINTS 13-14 (FABRIK, 2023)