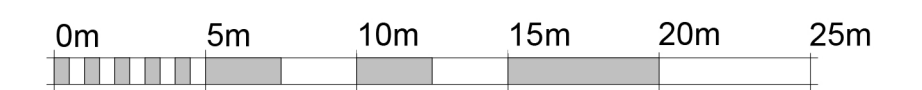
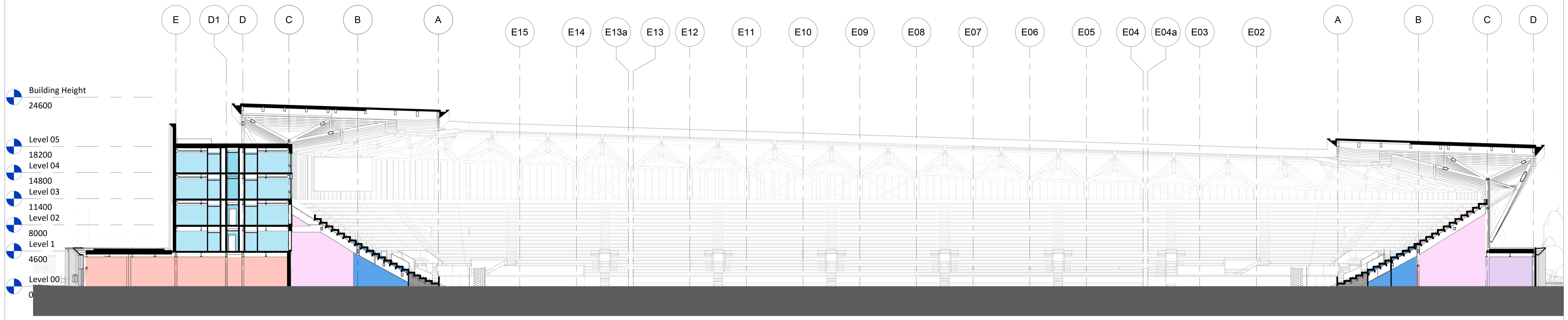


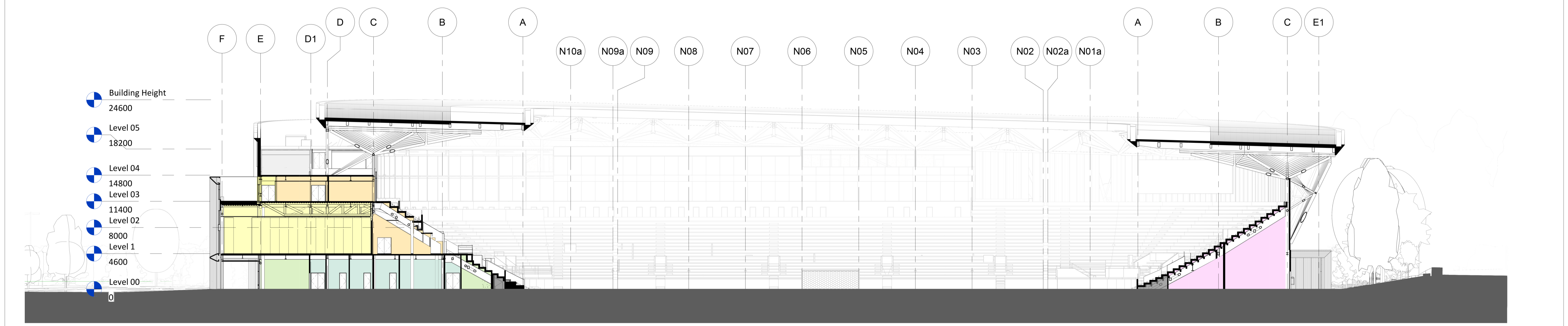
Figure 4.6 - Main Sections



VISUAL SCALE 1:250 @ A1



2 North Stand Section
1 : 250



3 Main Stand Section
1 : 250



VISUAL SCALE 1:250 @ A1

NOTES
All dimensions and levels to be checked on site
Any discrepancies are to be reported to the Architect before any work commences
This drawing shall not be scaled to ascertain any dimensions, work to figured dimensions only
This drawing shall not be reproduced without express written permission from AFL Architects Ltd.

DISCLAIMER
When this drawing is issued in CAD, it is an uncontrolled version issued for information only, to enable the recipient to prepare their own documents/drawings for which they are solely responsible.

SOFTWARE INTERDEPENDABILITY
AFL prepared this drawing using Autodesk REVIT Architecture.

AFL does not accept liability for any loss or degradation of any information held in the drawing resulting from the translation from the original file format to any other file format or from the recipient's reading of it in any other programme.

P13	21/02/24	JN	Planning Issue.
rev no.	rev date	rev by	description

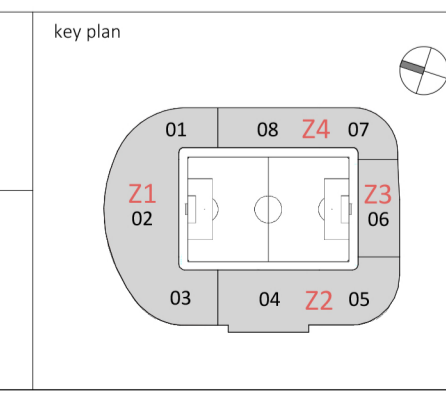
client
Oxford United Football Club

AFL Architects
1st Floor, St Georges House
56 Peter Street, Manchester UK
M2 3NQ

t: +44(0)161 236 6263
f: +44(0)161 236 6484

w: www.afl-architects.com
e: mail@afl-uk.com
twitter.com/AFLArchitects





project
Oxford United Football Club

location
Oxford

drawing title
Main Sections

AFL job number 221524	scale @ A1 1 : 250	drawn JN	checked MR
dwg purpose PLANNING	rev date 21/02/24	status S2	rev P13
bim project origin zone level type role 6-digit no. OUFC-AFL-ZZ-ZZ-DR-A-203000			