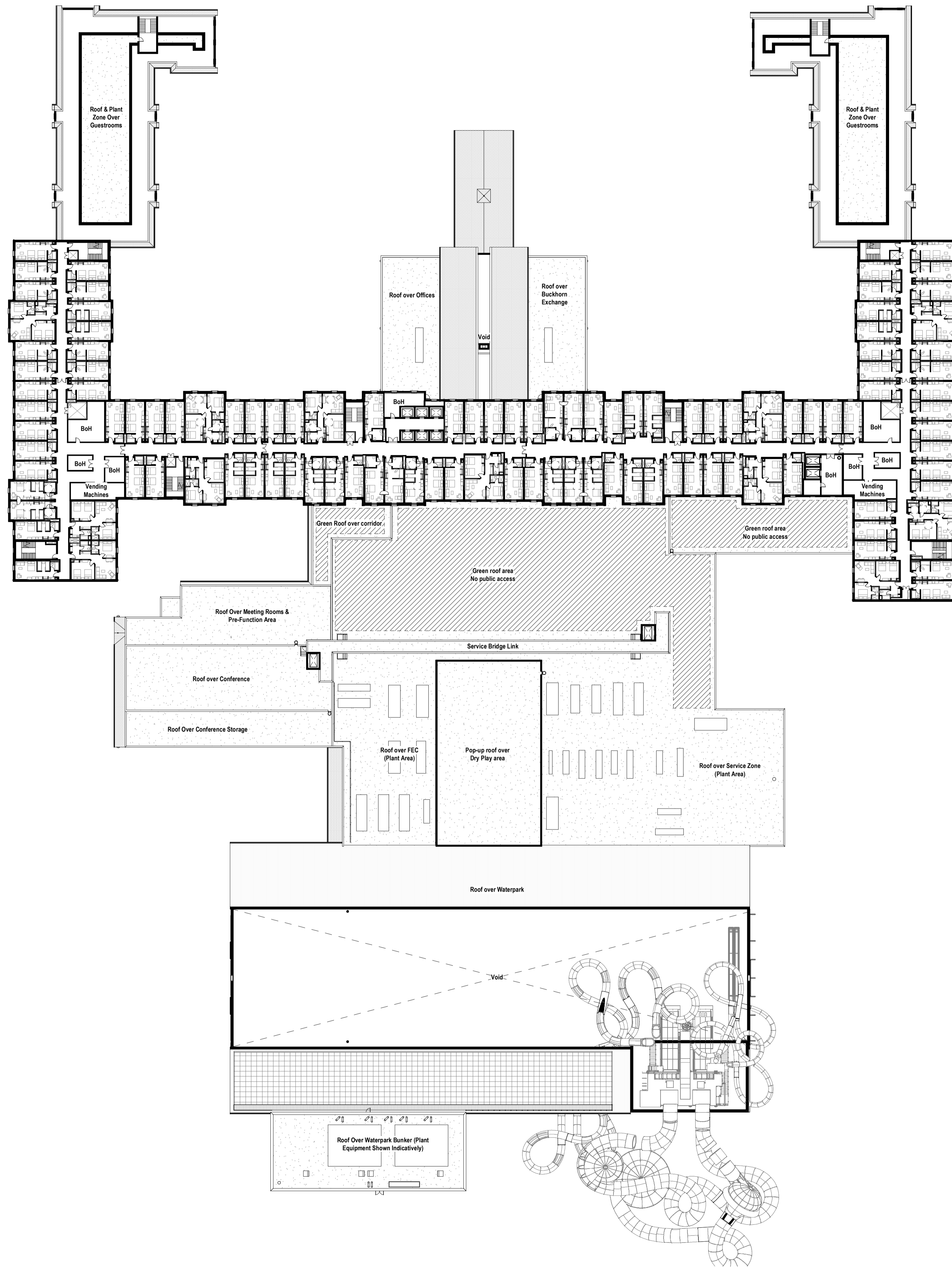


## **Figure 4-5 - General Arrangement Third Floor**



Keyplan

North

Notes:

1. Do not scale
2. Contractor to Check all dimensions and report omissions and errors to the Architect
3. EPR Architects accepts no liability for use of this drawing by parties other than the party for whom it was prepared or for purposes other than those for which it was prepared.
4. This drawing is issued in dwg/print format as an uncontrolled version to enable the recipient to prepare their own documents/drawings/models for which they are solely responsible. This drawing is based on project information current at the time of issue. EPR Architects Limited accepts no liability for any alterations or additions to or discrepancies arising out of any change to such project information that occurs to the information after it is issued by EPR Architects Limited.
5. This drawing does not contain shared coordinates and is not issued for coordination purposes.

No.	Revision	Date	Initial	Chk'd
3	P03 - Planning Issue	08.11.19	LOG	AJ
2	P02 - Preliminary Planning Issue	20.10.19	LOG	AJ
1	P01 - Preliminary Planning Issue	25.10.19	LOG	CT

Notes:

1. This drawing has been prepared for planning application purposes only.
2. EPR Architects accepts no liability for use of this drawing by parties other than the party for whom it was prepared or for purposes other than those for which it was prepared.
3. Do not scale.
4. This drawing is based on project information current at the time of issue. EPR Architects Limited accepts no liability for any alterations to or discrepancies arising out of any change to such project information that occurs to the information after it is issued by EPR Architects Limited.
5. This drawing does not contain shared coordinates and is not issued for coordination purposes.
6. Guestrooms layouts and furniture arrangement are indicative and for illustrative purposes only.

Scale 1:500

EPR Architects  
30 Millbank, London SW1P 4DU  
+44(0)20 7327800  
www.epr.co.uk

Proposed Great Wolf Lodge  
Chesterton, Bicester, Oxfordshire

Proposed Third Floor Plan

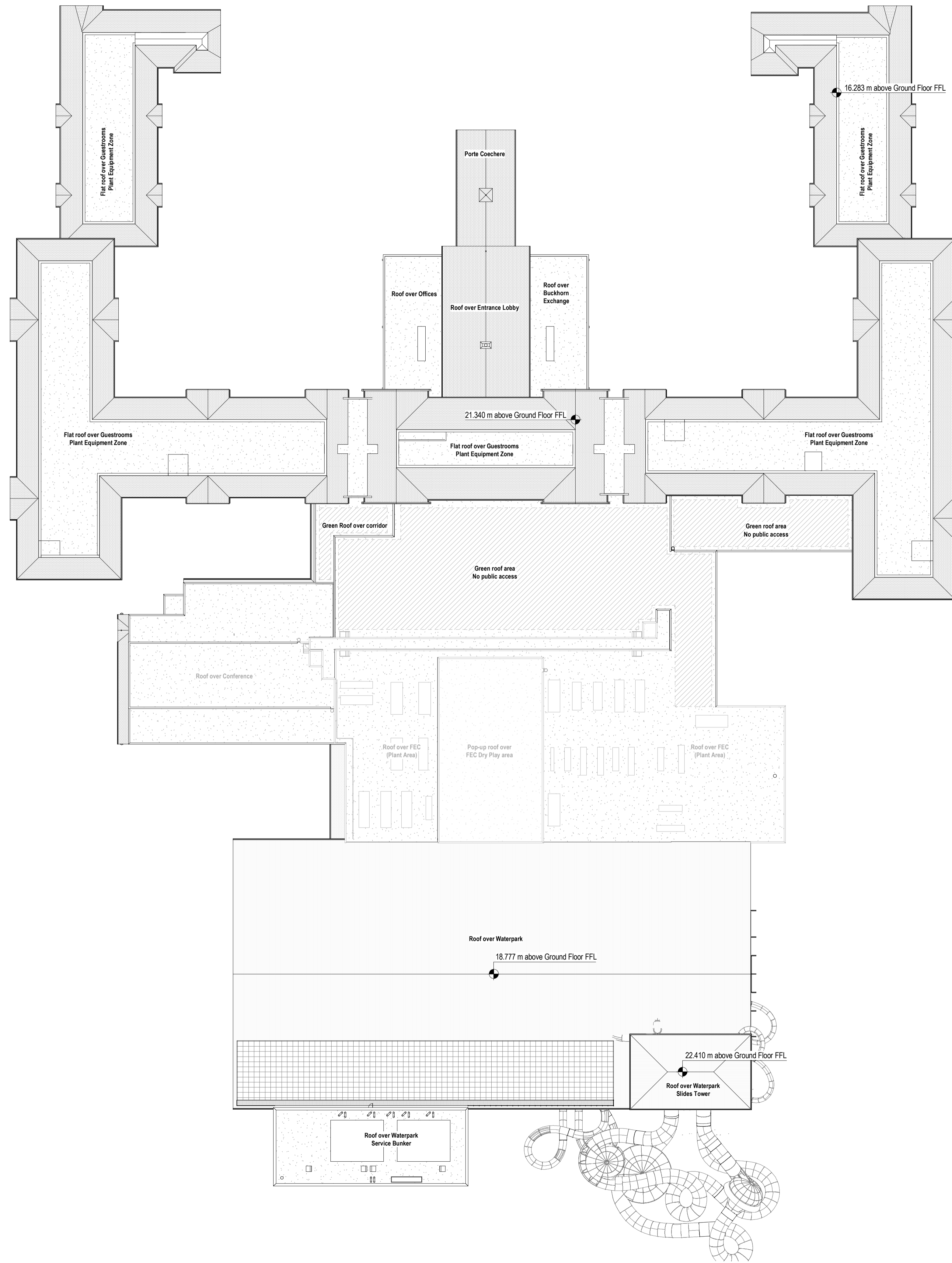
Scale	Status	Revision
1:500	Planning	3

Project Code: 10875 - EPR - 00 - 03 - DR - A - TP-0203

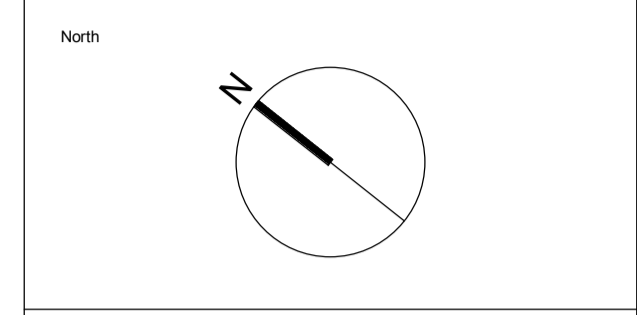
D:\Rev\03\10875-EPR-00-03-DR-A-TP-0203-01.dwg, User: aj, Date: 25/10/2019, Time: 14:27

2019-11-08 14:27

## **Figure 4-6 - General Arrangement Roof Plan**



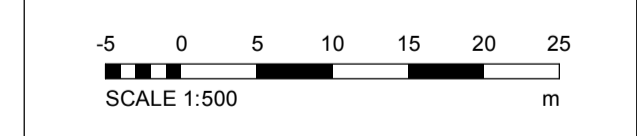
Keyplan



Notes:  
 1. Do not scale  
 2. Contractor to Check all dimensions and report omissions and errors to the Architect  
 3. EPR Architects accepts no liability for use of this drawing by parties other than the party for whom it was prepared or for purposes other than those for which it was prepared.  
 4. This drawing is issued in dwg/print format as an uncontrolled version to enable the recipient to prepare their own documents/drawings/models for which they are solely responsible. This drawing is based on project information current at the time of issue. EPR Architects Limited accepts no liability for any alterations or additions to or discrepancies arising out of any change to such project information that occurs to the information after it is issued by EPR Architects Limited.  
 5. This drawing does not contain shared coordinates and is not issued for coordination purposes.

No.	Revision	Date	Initial	Chk'd
3	P03 - Planning Issue	08.11.19	LOG	AJ
2	P02 - Preliminary Planning Issue	26.10.19	LOG	AJ
1	P01 - Preliminary Planning Issue	25.10.19	LOG	CT

Notes:  
 1. This drawing has been prepared for planning application purposes only.  
 2. EPR Architects accepts no liability for use of this drawing by parties other than the party for whom it was prepared or for purposes other than those for which it was prepared.  
 3. Do not scale.  
 4. This drawing is based on project information current at the time of issue. EPR Architects Limited accepts no liability for any alterations to or discrepancies arising out of any change to such project information that occurs to the information after it is issued by EPR Architects Limited.  
 5. This drawing does not contain shared coordinates and is not issued for coordination purposes.



**EPR Architects**  
 30 Millbank, London SW1P 4DU  
 +44(0)20 7327800  
 www.epr.co.uk

Proposed Great Wolf Lodge  
 Chesterton, Bicester, Oxfordshire

**Proposed Roof Plan**

Scale @A1 Status Revision  
 1:500 Planning 3

Project Code Originator Zone Level Type Role Class Number  
 10875 - EPR - 00 - 05 - DR - A - TP-0204

D:\Revit\10875-05-DR-TP-0204-A-CDN\Title\_Millbank\_Roomover.dwg on 10/11/19 11:08:13 AM

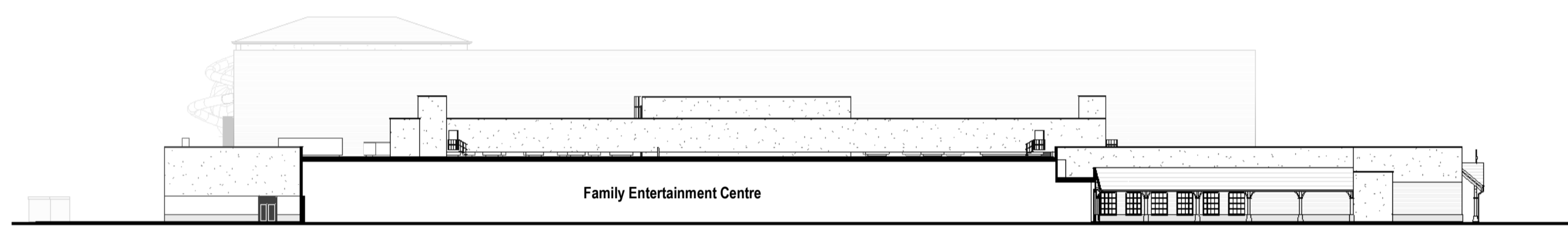
## **Figure 4-7 - North East and South East Elevations**



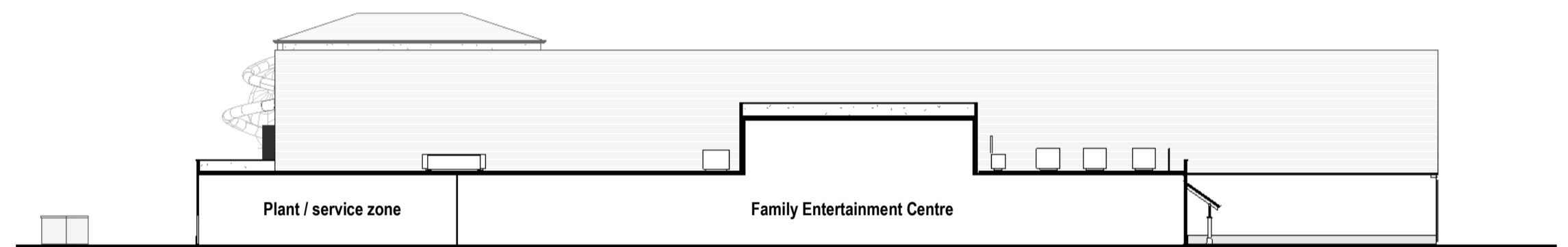
NE1 North East Elevation 1  
1:500



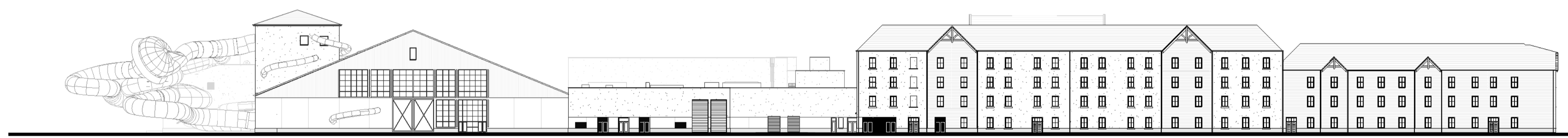
NE2 North East Elevation 2  
1:500



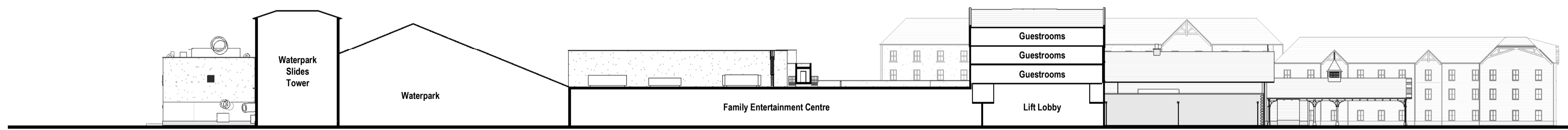
NE3 North East Elevation 3  
1:500



NE4 North East Elevation 4  
1:500



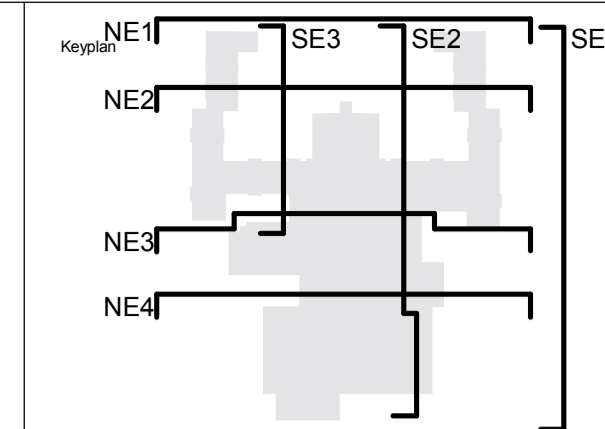
SE1 South East Elevation 1  
1:500



SE2 South East Elevation 2  
1:500



SE3 South East Elevation 3  
1:500

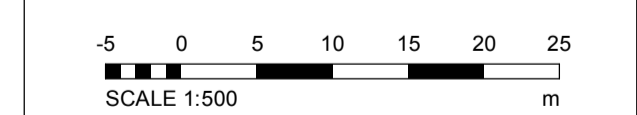


North

Notes:  
1. Do not scale  
2. Contractor to Check all dimensions and report omissions and errors to the Architect  
3. EPR Architects accepts no liability for use of this drawing by parties other than the party for whom it was prepared or for purposes other than those for which it was prepared.  
4. This drawing is issued in dwg/dgn format as an uncontrolled version to enable the recipient to prepare their own documents/drawings/models for which they are solely responsible. This drawing is based on project information current at the time of issue. EPR Architects Limited accepts no liability for any alterations or additions to or discrepancies arising out of any change to such project information that occurs to the information after it is issued by EPR Architects Limited.  
5. This drawing does not contain shared coordinates and is not issued for coordination purposes.

No.	Revision	Date	Initial	Chk'd
3	P03 - Planning Issue	08.11.19	LOG	AJ
2	P02 - Preliminary Planning Issue	26.10.19	LOG	AJ
1	P01 - Preliminary Planning Issue	25.10.19	LOG	CT

Notes:  
1. Stonework, render, timber cladding & roof tile patterns indicative - shown for illustrative purpose.



**EPR Architects**  
30 Milbank, London SW1P 4DU  
+44(0)20 7327800  
www.epr.co.uk

Proposed Great Wolf Lodge  
Chesterton, Bicester, Oxfordshire

Proposed Elevations - East

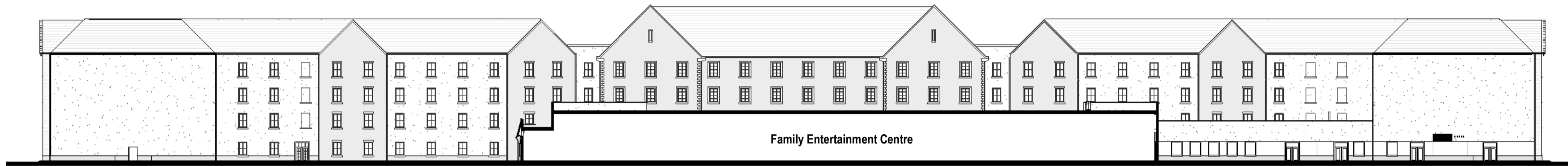
Scale @A1	Status	Revision
1:500	Planning	3

Project Code: 10875 - EPR - 00 - XX - EL - A - TP-0401

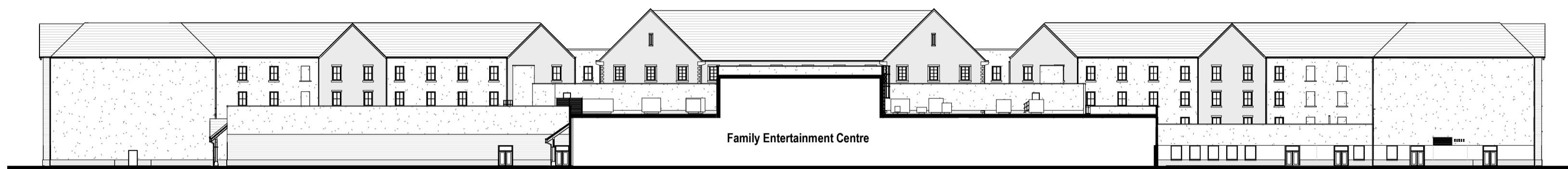
## **Figure 4-8 - South West and North West Elevations**



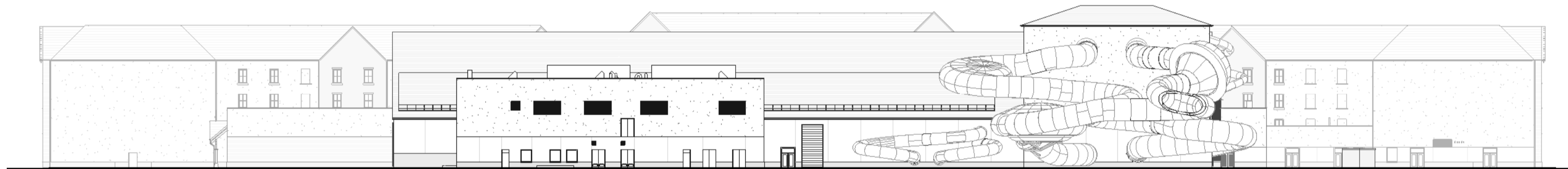
SW1 South West Elevation 1  
1:500



SW2 South West Elevation 2  
1:500



SW3 South West Elevation 4  
1:500



SW4 South West Elevation 4  
1:500



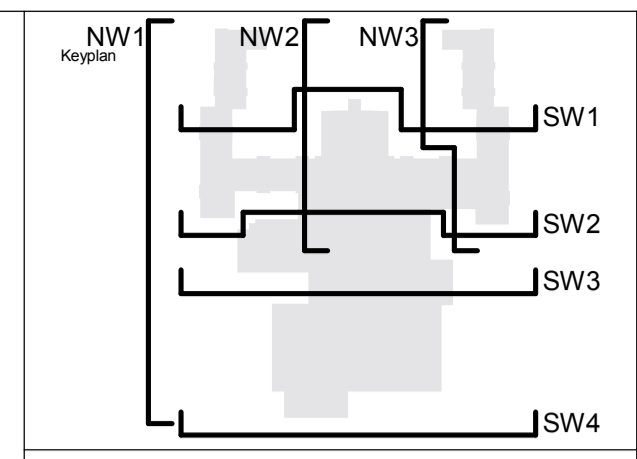
NW1 North West Elevation 1  
1:500



NW2 North West Elevation 2  
1:500



NW3 North West Elevation 3  
1:500



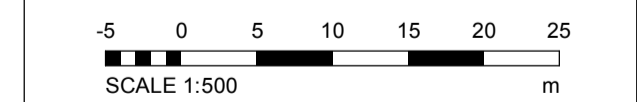
North

Notes:  
 1. Do not scale  
 2. Contractor to check all dimensions and report omissions and errors to the Architect  
 3. EPR Architects accepts no liability for use of this drawing by parties other than the party for whom it was prepared or for purposes other than those for which it was prepared.  
 4. This drawing is issued in dwg/dgn format as an uncontrolled version to enable the recipient to prepare their own documents/drawings/models for which they are solely responsible. This drawing is based on project information current at the time of issue. EPR Architects Limited accepts no liability for any alterations or additions to or discrepancies arising out of any change to such project information that occurs to the information after it is issued by EPR Architects Limited.  
 5. This drawing does not contain shared coordinates and is not issued for coordination purposes.

3	P03 - Planning Issue	08.11.19	LOG	AJ
2	P02 - Preliminary Planning Issue	26.10.19	LOG	AJ
1	P01 - Preliminary Planning Issue	25.10.19	LOG	CT

No.	Revision	Date	Initial	Chk'd
-----	----------	------	---------	-------

Notes:  
 1. Stonework, render, timber cladding & roof tile patterns indicative - shown for illustrative purpose.



**EPR Architects**  
 30 Milbank, London SW1P 4DU  
 +44(0)20 73327800  
 www.epr.co.uk

Proposed Great Wolf Lodge  
 Chesterton, Bicester, Oxfordshire

Proposed Elevations - West

Scale @A1	Status	Revision
1:500	Planning	3

Project Code Originator Zone Level Type Role Class Number  
 10875 - EPR - 00 - XX - EL - A - TP-0402



## **Figure 4-9 – Overall Landscape General Arrangement**



This drawing is the property of Bradley Murphy Design Ltd. Copyright is reserved by them and the drawing is issued on the condition that it is not copied, reproduced, retained nor disclosed to any unauthorized person either wholly or in part without the consent of Bradley Murphy Design Ltd.

- NOTES:
1. THIS DRAWING IS BASED ON BMD OVERALL LANDSCAPE GENERAL ARRANGEMENT BMD.19.010.DR.P001
  2. FOR FURTHER DETAILS ON LANDSCAPE REFER TO BMD DRAWINGS LANDSCAPE GENERAL ARRANGEMENT PLANS BMD.19.010.DR.P101-104 & PLANTING PLANS & SCHEDULE BMD.19.010.DR.P301-305
  3. THIS DRAWING SHOULD BE READ IN CONJUNCTION WITH ALL OTHER LANDSCAPE DRAWINGS AND DOCUMENTS
  4. THIS DRAWING IS NOT INTENDED FOR CONSTRUCTION
  5. DO NOT SCALE FROM THIS DRAWING
  6. ANY DISCREPANCIES WITHIN THIS DRAWING OR BETWEEN THIS DRAWING AND ANY OTHER INFORMATION IS TO BE REPORTED TO BMD FOR CLARIFICATION

Rev	Description	Date
--	--	--

Purpose of Issue  
**PLANNING**

Bradley Murphy Design Ltd  
 6 The Courtyard  
 Hatton Technology Park  
 Dark Lane  
 Hatton  
 Warwickshire  
 CV35 8XB

t: 01926 676496  
 e: info@bradleymurphydesign.co.uk  
 www.bradleymurphydesign.co.uk



Client  
**GREAT LAKES UK LIMITED**

Project  
 PROPOSED GREAT WOLF LODGE, CHESTERTON, BICESTER

Drawing Title  
 OVERALL GENERAL ARRANGEMENT, SCALE 1:2500

Drawn	Checked	Approved	Date
MP	RW	RW	07/11/2019
Job No. 19.010	Scale 1:2500	Sheet Size A3	Revision -
Drawing Number BMD.19.010.DR.P002			